

N: 51,703.6634, E: 49,913.4722
 Sta. 0+00.0
 Existing Precast Concrete MH.
 Construct 3' concrete plug in existing outside drop pipes (NNW).
 Core existing concrete MH wall and Install Outside Drop Connection/Cleanout Riser Assembly. Seal new 8" Pipe to MH with an approved waterstop gasket and non-shrink grout. Construct a minimum of 3' Reinforced Concrete Encasement from MH wall. Reshape MH floor to provide smooth flow. Repair Interior Linings/Coatings as necessary.
 Adjust manhole top elevation to the elevation provided in the profile. The Contractor shall remove a barrel section from the existing Precast Manhole and replace it with a new Precast Barrel Section of length necessary to match adjusted elevation. The Cone Section and Frame and Cover may be reused as approved by the Construction Engineer. The contractor shall provide new adjustment rings as necessary. Manhole adjustment shall be subsidiary to the project.
 Exist. MH Elev. = 183.85
 Prop. MH Elev. = 182.2
 Difference in elevation = 1.65'

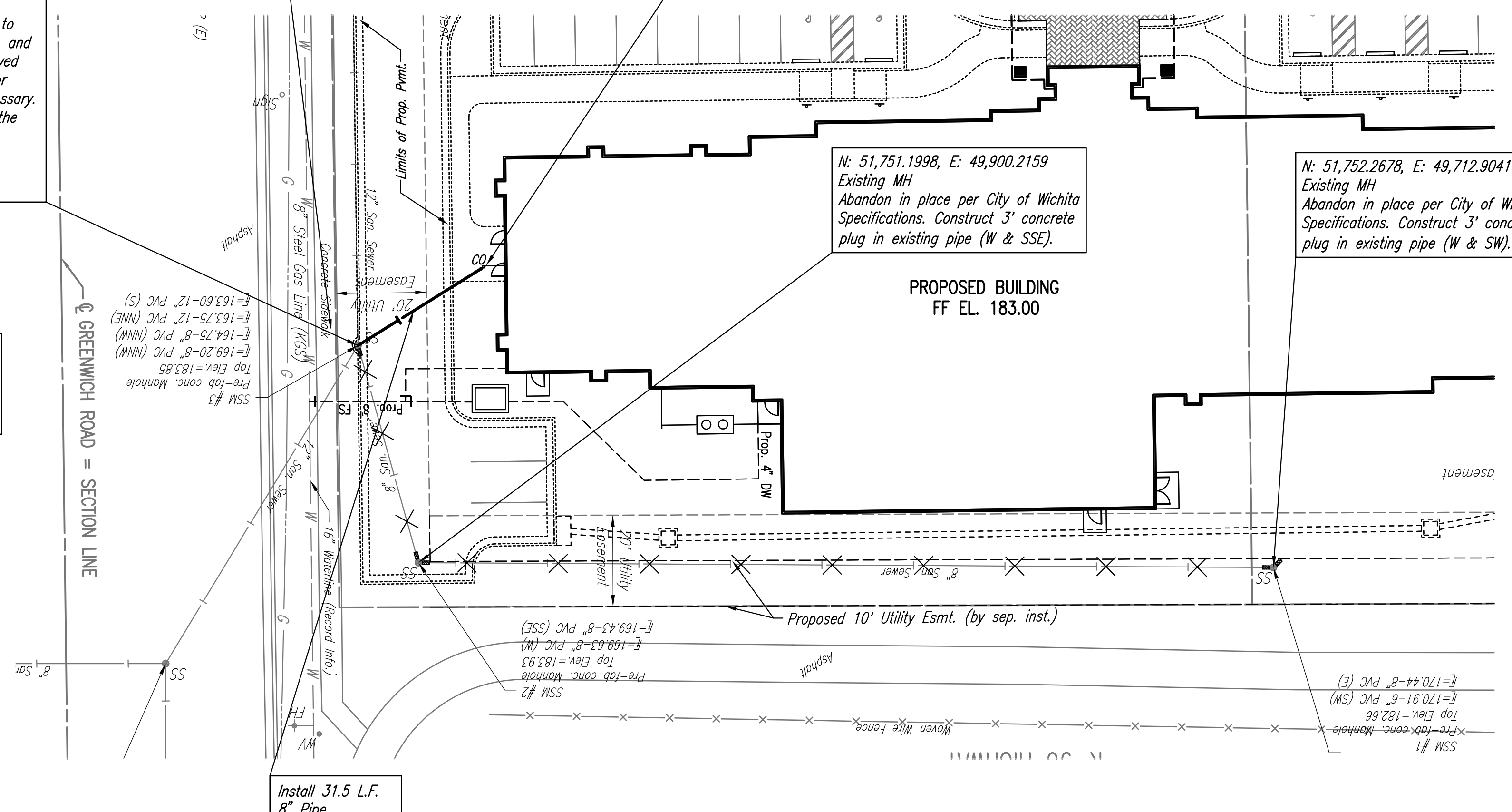
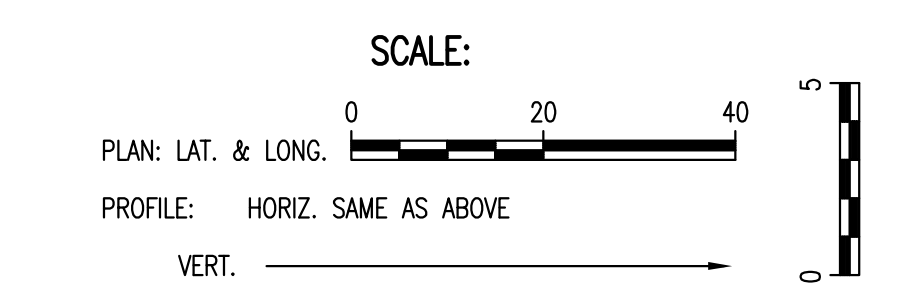
The proposed 8" Sanitary Sewer from the existing manhole to the proposed cleanout shall be Tested, Telescoped and Accepted prior to connecting to building sewer.

Remove and replace Concrete Sidewalk as required for sanitary sewer construction.

N: 51,687.0014, E: 49,886.7568
 Sta. 0+31.5
 Connect to Cleanout
 See Mechanical Plans for Continuation and flowline verification.

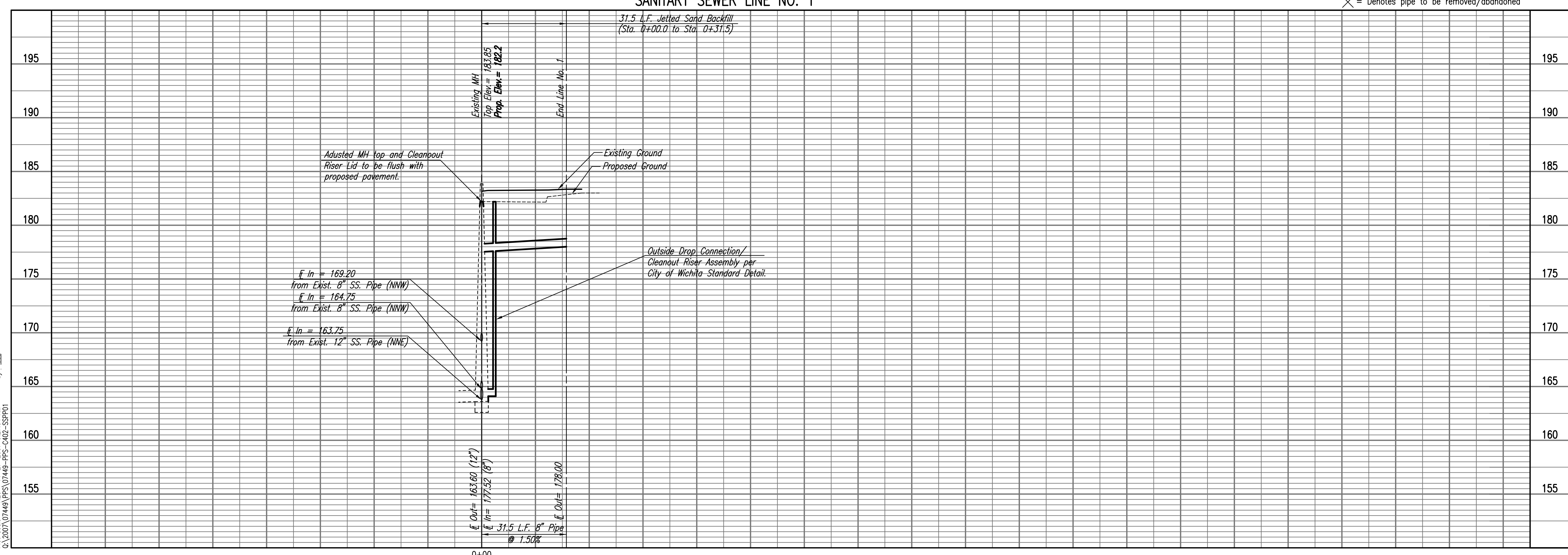
N: 51,751.1998, E: 49,900.2159
 Existing MH
 Abandon in place per City of Wichita Specifications. Construct 3' concrete plug in existing pipe (W & SSE).

N: 51,752.2678, E: 49,712.9041
 Existing MH
 Abandon in place per City of Wichita Specifications. Construct 3' concrete plug in existing pipe (W & SW).



SANITARY SEWER LINE NO. 1

× = Denotes pipe to be removed/abandoned



Saved 11-27-2007 8:27:42 AM by CSL
 Plot Scale: 1/8\"/>

REVIEWS		PRINTS ISSUED	
DATE	ITEM	DATE	PURPOSE
		11-01-07	FOR PERMIT
		11-21-07	City of Wichita Private Plans

BROWNING & ASSOCIATES
 ARCHITECTURE
 1305 E. WATERMAN, SUITE - B
 WICHITA, KANSAS 67211
 TEL 1-316-269-9001 FAX 1-316-269-9005

Hampton Inn & Suites
 100 ROOM HOTEL
 LOTS 7 & 8, BLOCK 1
 REGENCY LAKES
 COMMERCIAL 2ND
 WICHITA, KANSAS
 PROJECT NO. 0702-296-472

DRAWN	C&L	CHECKED	DK
SHEET TITLE SANITARY SEWER LINE PLAN/PROFILE			
SHEET NUMBER C-402			
OF _____ SHEETS			

Professional Engineering Consultants, P.A.
 800 S. TORRENS, WICHITA, KANSAS 67202 - 316 262 2091
 www.pcc1.com • dave.ganier@pcc1.com
 COPYRIGHT 2007 JAMES L. BROWNING, ARCHITECT. ALL RIGHTS RESERVED

CITY OF WICHITA PRIVATE PROJECT NO. 1832 PPS (607861)