

**GENERAL NOTES**

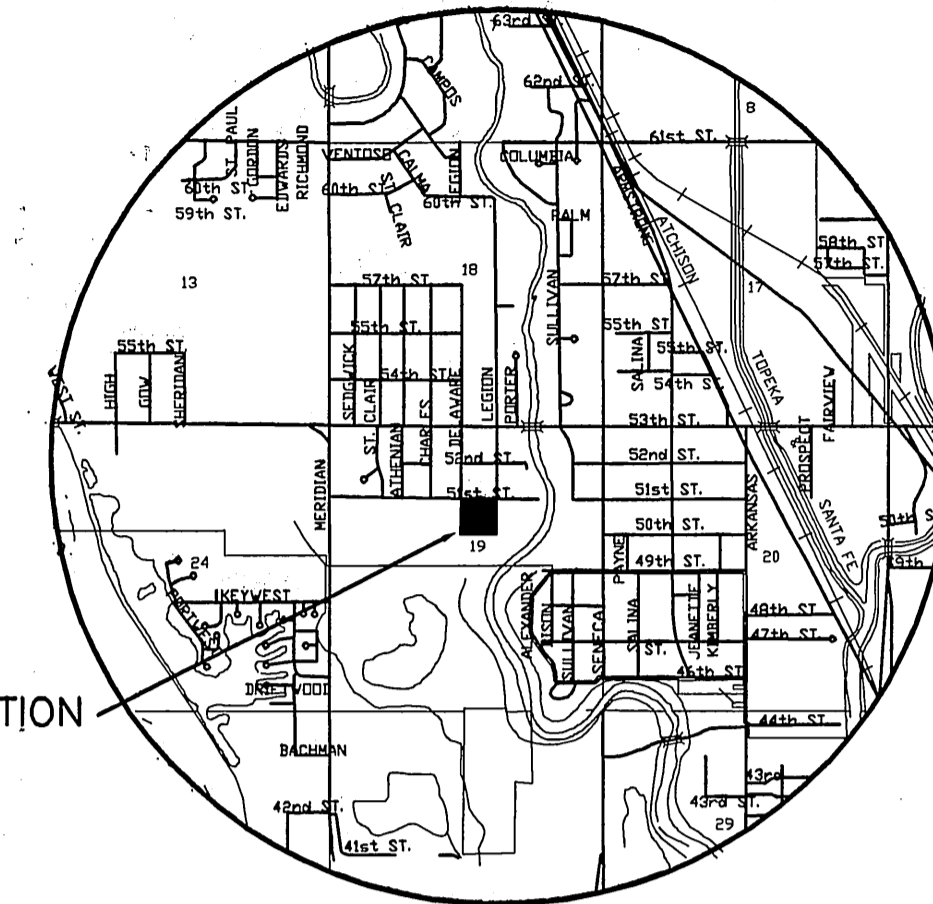
- UNLESS SHOWN OR STATED OTHERWISE ON THESE DRAWINGS, MATERIALS AND CONSTRUCTION SHALL BE IN ACCORDANCE WITH CITY OF WICHITA STANDARD SPECIFICATIONS.
- CONTRACTOR WILL BE REQUIRED TO PROVIDE A MINIMUM ADVANCE NOTICE OF SEVENTY-TWO (72) HOURS TO UTILITY COMPANIES PRIOR TO STARTING ANY EXCAVATION AS FOLLOWS:  
 KANSAS ONE-CALL 1-800-344-7233  
 or 687-2470 (LOCAL WICHITA)
- THE CONTRACTOR MUST NOTIFY THE FOLLOWING IN CASE OF AN EMERGENCY:  
 SBC (TELEPHONE) 800-870-8390  
 COX COMMUNICATIONS (CABLE) 262-0661  
 KANSAS GAS SERVICE (GAS) 832-3101  
 CITY OF WICHITA WATER & SEWER 262-6000  
 WESTAR (ELECTRIC) 261-6734  
 AQUILA (GAS) 800-303-0357
- THE CONTRACTOR SHALL BE RESPONSIBLE FOR PRESERVING PROPERTY IRONS. THE CONTRACTOR WILL BE REQUIRED TO RE-ESTABLISH ANY PROPERTY IRONS WHICH ARE DAMAGED OR DESTROYED BY HIS CONSTRUCTION OPERATIONS. SUCH IRONS SHALL BE RE-ESTABLISHED BY A LICENSED LAND SURVEYOR IN ACCORDANCE WITH STATE LAWS.
- EXISTING UTILITIES AND THEIR LOCATIONS, AS SHOWN ON THE PLANS, REPRESENT THE BEST INFORMATION OBTAINABLE FOR DESIGN. LOCATION INFORMATION HAS BEEN OBTAINED FROM THE VARIOUS UTILITY COMPANIES AND IS EITHER FROM COMPANY RECORD DRAWINGS OR COMPANY PROVIDED FIELD LOCATIONS. THE SALVATION ARMY'S RECORDS REGARDING EXISTING UTILITIES AND THEIR LOCATIONS HAVE ALSO BEEN INCORPORATED INTO THE PLANS. THE PLAN LOCATIONS SHOWN ARE NOT GUARANTEED. ADDITIONAL EXISTING UTILITIES MAY ALSO BE ENCOUNTERED.
- RUBBLE FROM THE REMOVAL OF MISCELLANEOUS STRUCTURES AND EXCESS EXCAVATION WHICH IS TO BE WASTED SHALL BE DISPOSED OF ON SITES TO BE PROVIDED BY THE CONTRACTOR. THESE SITES SHALL BE APPROVED BY THE ENGINEER AS TO SUITABILITY, APPEARANCE AND SITE LOCATION. LOCATIONS THAT, IN THE OPINION OF THE ENGINEER, WILL LEAVE AN UNSIGHTLY APPEARANCE WILL NOT BE APPROVED. ALL DISPOSAL SITES MUST BE APPROVED BY THE KANSAS DEPARTMENT OF HEALTH AND ENVIRONMENT. MATERIAL EITHER STOCKPILED OR DISPOSED OF IN A FLOOD PLAIN WOULD REQUIRE A KANSAS STATE BOARD OF AGRICULTURE PERMIT. ANY MATERIAL DUMPED IN WATERS OF THE UNITED STATES OR WETLANDS IS SUBJECT TO U.S. CORPS OF ENGINEERS PERMITTING REGULATIONS. ANY MATERIAL BURIED OR STOCKPILED BEYOND APPROVED CONSTRUCTION LIMITS WOULD REQUIRE ADDITIONAL ARCHAEOLOGICAL INVESTIGATIONS UNLESS BURIED IN A PREVIOUSLY APPROVED BORROW LOCATION.
- COST OF EXCAVATION, HAULING, AND DUMPING OF EXCESS EXCAVATION SHALL BE SUBSIDIARY TO THE PROJECT.
- A PORTION OF EXCESS EXCAVATED MATERIAL SHALL BE MOUNDED AROUND MANHOLES WHICH EXTEND MORE THAN ONE (1) FOOT ABOVE THE EXISTING GROUND. SUCH MOUNDS SHALL BE CONSTRUCTED WITH A SIX (6) FOOT DIAMETER FLAT TOP WITH 4 TO 1 SIDE SLOPES DOWN TO THE ORIGINAL GROUND. THE ELEVATION OF THE FLAT TOP OF THE MOUND SHALL BE 0.4 FOOT BELOW THE TOP OF THE MANHOLE.
- ALL STUBS AND PLUGGED PIPES SHALL BE LOCATED WITH GREEN PLASTIC TAPE IN THE SAME MANNER AS RISERS.
- CONNECTING TO EXISTING MANHOLES:  
 PRIOR TO LAYING SEWER LINES USING EXISTING STUBS IN EXISTING MANHOLES, THE CONTRACTOR SHALL EXPOSE AND VERIFY THE ELEVATION, GRADE AND ALIGNMENT OF EXISTING STUBS AND NOTIFY THE ENGINEER OF ANY DEVIATION FROM THE PLAN. WHERE CONNECTION TO AN EXISTING MANHOLE THAT DOES NOT HAVE AN EXISTING STUB OR THE STUB IS UNUSABLE DUE TO ELEVATION GRADE OR ALIGNMENT, THE CONTRACTOR SHALL BORE OUT INTO EXISTING MANHOLE WALL TO MAKE CONNECTION USING APPROVED WATER STOP GASKET, AND RESHAPE THE EXISTING MANHOLE INVERT TO PROVIDE SMOOTH FLOW. THE COST OF CONNECTING TO EXISTING MANHOLES IS INCIDENTAL TO THE PROJECT.
- TREES AND SHRUBS IN EASEMENTS WHICH ARE IN DIRECT CONFLICT WITH PROPOSED CONSTRUCTION SHALL BE TRIMMED BY THE CONTRACTOR WITH THE ENGINEER'S APPROVAL. TREES AND SHRUBS WHICH ARE NOT IN DIRECT CONFLICT WITH PROPOSED NEW CONSTRUCTION SHALL BE SAVED AND PROTECTED FROM DAMAGE.
- ALL AREAS DISTURBED BY CONSTRUCTION OF THE PROPOSED IMPROVEMENTS SHALL BE RESTORED WITH THE SAME GROUND COVER AS EXISTING. LAWN AREAS DISTURBED BY CONSTRUCTION SHALL BE SEED OR SOODED TO MATCH EXISTING GROUND COVER. MULCH, SAND OR OTHER GROUND COVER WITHIN PLAY AREAS DISTURBED BY CONSTRUCTION SHALL BE REPLACED TO MATCH EXISTING. RESTORATION OF DISTURBED AREAS SHALL INCLUDE, BUT NOT BE LIMITED TO, TOP SOIL PREPARATION, SEEDING, MULCHING, REPLACEMENT OF SAND OR OTHER GROUND COVER IN PLAY AREAS AND/OR RESEEDING. ALL COSTS FOR THIS WORK SHALL BE SUBSIDIARY TO THE LUMP SUM PRICE FOR "SITE CLEARING AND RESTORATION".
- CONTRACTOR SHALL COORDINATE ALL WORK, INCLUDING IRRIGATION REPAIRS, WITH OWNER'S REPRESENTATIVE. CONTACT RON WHITED AT 641-5535. IRRIGATION REPAIR AND/OR REPLACEMENT SHALL BE SUBSIDIARY TO SITE CLEARING AND RESTORATION.
- TREES TO BE REMOVED ARE MARKED WITH AN 'X'. ALL TREES WHICH, IN THE OPINION OF THE FIELD ENGINEER CAN BE SAVED, SHALL BE SAVED.
- THE SANITARY SEWER MAIN SHALL BE TELEVIEWED AND AIR TESTED PRIOR TO MAKING ANY SERVICE CONNECTIONS TO THE NEW MAIN.
- THE CONTRACTOR SHALL OBTAIN A SEWER SERVICE CONNECTION PERMIT FROM THE CITY OF WICHITA OFFICE OF CENTRAL INSPECTION PRIOR TO MAKING ANY SERVICE CONNECTIONS TO THE SANITARY SEWER MAIN. CONTACT BETTY ROARK AT 268-4341.
- ALL EXISTING SERVICE LINES TO REMAIN IN PLACE AND BE CONNECTED TO THE NEW SANITARY SEWER MAIN SHALL REQUIRE TV INSPECTION AND ACCEPTANCE BY THE CITY OF WICHITA OFFICE OF CENTRAL INSPECTION PRIOR TO CONNECTION BEING MADE.
- SANITARY SEWER SERVICES SHALL BE INSTALLED BY A LICENSED DRAIN LAYER.

# PHASE 2 PRIVATE SANITARY SEWER PLANS FOR SALVATION ARMY - HIAWATHA CAMPUS

## LOT 1, BLOCK 1 CAMP HIAWATHA ADDITION

CITY OF WICHITA, KANSAS  
 JAMES L. ARMOUR, CITY ENGINEER

PROJECT NO. 1851 PPS  
 OCA 607861



SITE LOCATION

LOCATION MAP

**INDEX TO DRAWINGS**

SHEET NO.	DESCRIPTION
1	TITLE SHEET
2	MANHOLE DETAILS
3	REMOVAL PLAN
4	SANITARY SEWER SERVICE
5	LINE 1
6	BUBBLE MAP
7-8	EROSION CONTROL DETAILS
9	FINAL PLAT

**BENCHMARKS**

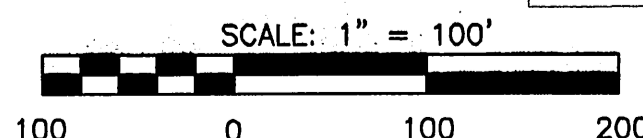
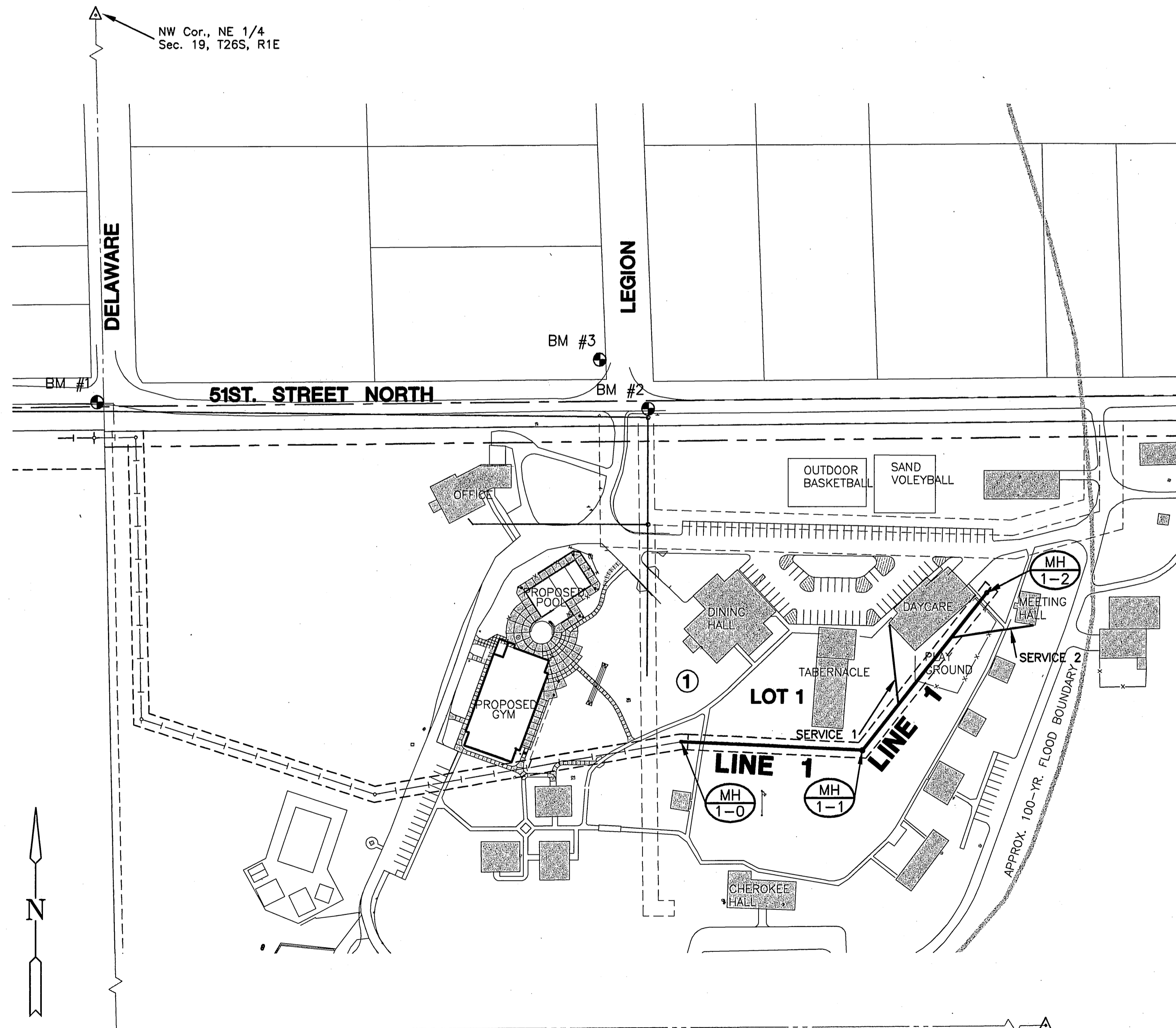
- BM #1 PK Nail and Washer at the Intersection of Delaware and 51st Street North. 3 feet north of the south edge of 51st Street. ELEV.= 143.86'
- BM #2 PK Nail and Washer at the southeast side of Legion and 51st Street North. 3 feet north of the south edge of 51st. ELEV.= 141.44'
- BM #3 RR Spike SE face of power pole at northwest corner of Legion and 51st Street North. ELEV.= 142.39'

APPROVED AS NOTED  
 BY CITY ENGINEER OF WICHITA

SANITARY SEWERS VRH 3/24/08

**NOTE TO CONTRACTOR**

INSPECTION AND TESTING FOR THIS PROJECT IS TO BE PROVIDED BY A LICENSED CONSULTING ENGINEERING FIRM UNDER CONTRACT WITH THE OWNER/DEVELOPER. SAID INSPECTION TO BE IN ACCORDANCE WITH THE CITY OF WICHITA STANDARD CONSTRUCTION ENGINEERING PRACTICES AND CERTIFIED BY A LICENSED PROFESSIONAL ENGINEER. NO WORK SHALL BE PERFORMED IN DEDICATED EASEMENTS OR THE PUBLIC RIGHT-OF-WAY BY THE CONTRACTOR WITHOUT SUCH INSPECTION NOR SHALL ANY WORK BE COMMENCED IN DEDICATED EASEMENTS OR PUBLIC RIGHT-OF-WAY WITHOUT WRITTEN AUTHORIZATION BY THE CITY ENGINEER.



SE Cor., NE 1/4  
 Sec. 19, T26S, R1E

**MKEC**  
 ENGINEERING  
 CONSULTANTS, INC.  
 411 N. WEBB ROAD  
 WICHITA, KS. 67206  
 316-684-9600

SCOTT R. SEWIS  
 LICENSED SURVEYOR  
 3787  
 KANSAS  
 3/24/08

PHASE 2 SANITARY SEWER PLANS FOR  
**SALVATION ARMY**  
 HIAWATHA CAMPUS

**TITLE SHEET**  
 SHEET TITLE  
06635  
 PROJECT NUMBER

SRS | TKL | MAB  
 DESIGNED | DRAWN | CHECKED

ISSUED  
February 2008  
 REVISED  
 As BUILT: 5-15-08  
 Contractor: Mies Const.  
 Inspector: Pat Hayes (CED)

SHEET NO.  
**1 of 9**

PLOTTED: March 24, 2008 @ 02:17PM  
 J:\CIVIL\06635\DWG\SAW\PHASE 2\06635B.DWG