

# STORMWATER DRAIN #345

## CAMBRIA ADDITION

Project No. 468-84481

O.C.A. No. 751466

### GENERAL NOTES

- Contractor will be required to provide a minimum advance notice of seventy-two (72) hours to utility companies prior to starting any excavation as follows:
 

Kansas One-Call	1-800-DIG-SAFE or 811
-----------------	-----------------------
- The Contractor must notify the following in case of an emergency:
 

Cox Communications	262-0661
Kansas Gas Service	383-8600
Westar	383-8600
AT&T	1-800-286-8313
City of Wichita Water Department	262-6000
City of Wichita Sewer Maintenance	262-6000
- Underground utility service lines and overhead utility pole lines are to be adjusted as necessary by others prior to construction unless the plans specifically call for their adjustment by the Contractor or unless the plans specifically identify a utility to be adjusted by its owner during construction. Existing utilities and their location, as shown on the plans, represent the best information obtainable for design. Location information has been obtained from the various utility companies and is either from company record drawings or company-provided field locations. The Contractor will be required to work around existing utilities within the right-of-way which do not conflict with proposed construction.
- Rubble from the removal of miscellaneous structures and excess excavation which is to be wasted shall be disposed of on sites to be provided by the Contractor. These sites shall be approved by the Engineer as to suitability, appearance and site location. Locations that, in the opinion of the Engineer, will leave an unsightly appearance will not be approved.
- Any miscellaneous rubble encountered during construction shall be removed by the Contractor, subsidiary to bid item for Site Clearing and Restoration.
- All disposal sites must be approved by the Kansas Department of Health and Environment. Material either stockpiled or disposed of in a flood plain would require a Kansas State Board of Agriculture permit. Any material dumped in waters of the United States or wetlands is subject to U.S. Corps permitting regulations. Any material buried or stockpiled beyond approved of Engineers construction limits would require additional archeological investigations unless buried in a previously approved borrow location.
- The Engineer shall take field ties to all quarter section corners. The Contractor shall set a City survey monument in the required location where such quarter section corners fall within the limits of pavement construction. Survey monuments will be furnished by the city. The Engineer will accurately locate and install the iron at the quarter section corner. This work will not be paid for directly, but shall be considered subsidiary to the other pay items of work in the contract.
- The Contractor shall give all property owners and/or tenants of developed property directly abutting the construction of this project a minimum of ten (10) days advance notice prior to start of construction.
- The Contractor shall seed, fertilize and mulch all disturbed areas per City of Wichita specifications upon completion of construction.
- All materials and construction methods shall adhere to City of Wichita standard specifications.
- Trees to be removed only as necessary for construction.
- Light and heavy stone riprap shall be furnished and installed in accordance with Section 304 of the City of Wichita standard specifications.
- Reserves shall be permanently seeded as part of this project per City of Wichita Specifications.

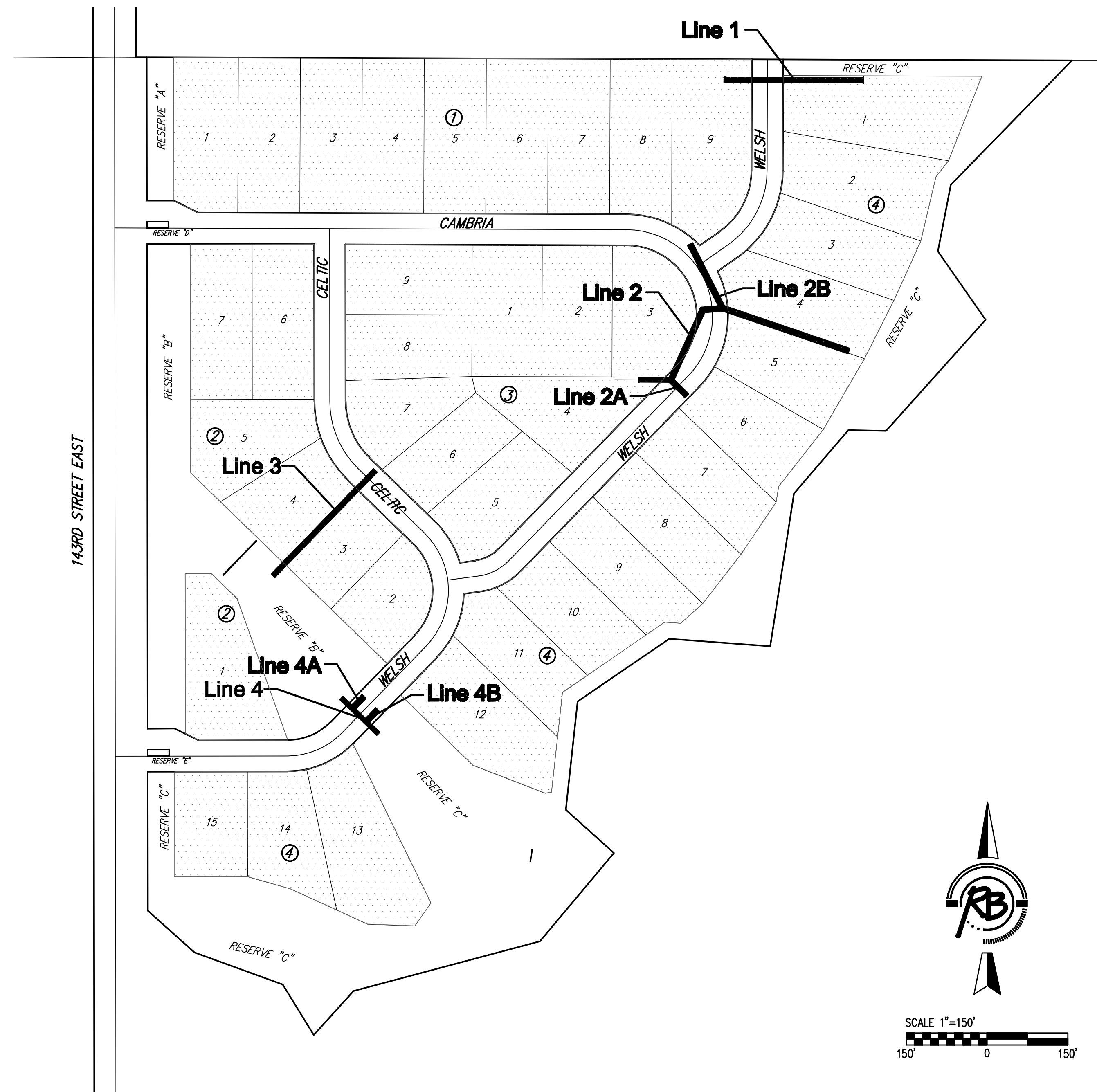
### BENCH MARKS

ON-SITE BENCH MARK: CHISELED SQUARE ON THE TOP OF A CONCRETE HEADWALL AT THE NORTHWEST CORNER OF A BRIDGE, 981 FEET NORTH AND 13 FEET WEST OF THE SOUTHWEST CORNER OF SECTION 36, T27S, R2E ELEVATION = 1308.29 (NGVD29)

BENCH MARK: SRB BRASS DISC 1008.17' E. & 55.63' N. OF THE CENTERLINE INTERSECTION PANNEE AVENUE & 127TH STREET EAST ELEV. = 1336.63 (NGVD)

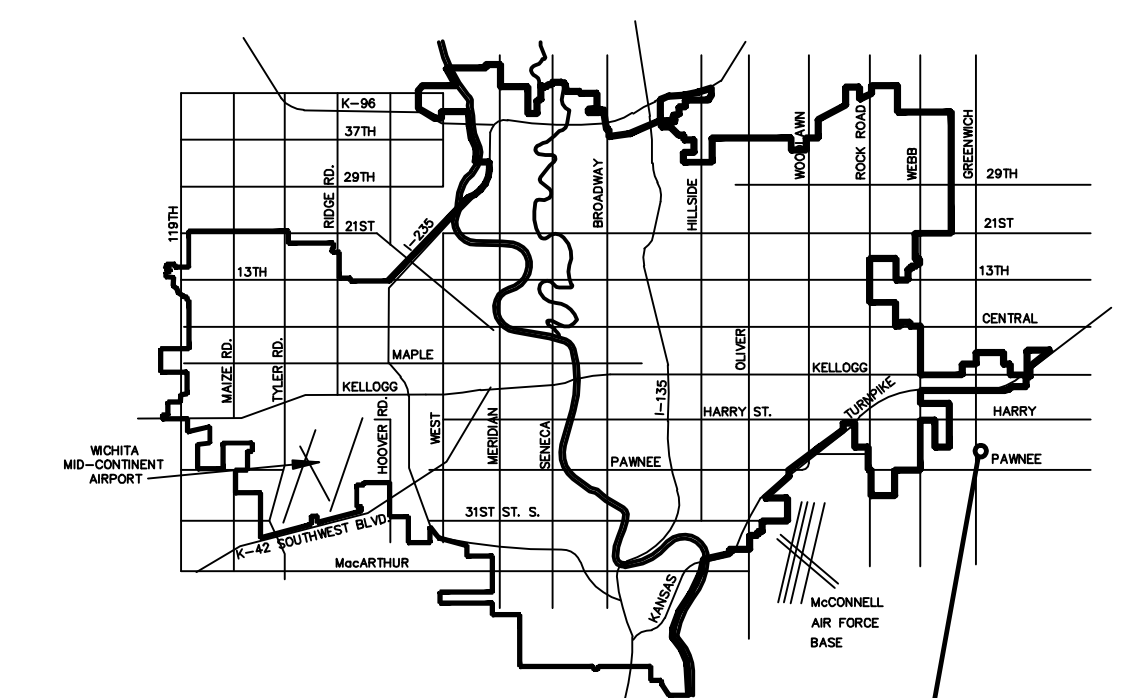
### INDEX OF SHEETS

- TITLE SHEET
- SITE GRADING - CONTOUR MAP
- SITE GRADING - LOT CORNER GRADES
5. POND GRADING PLANS
- WEIR DETAILS
- LINE 1 PLAN & PROFILE
- LINE 2 PLAN & PROFILE
- LINE 2A & 2B PLAN & PROFILE
- LINE 3 PLAN & PROFILE
- LINES 4, 4A AND 4B PLAN & PROFILE
- HANDRAIL DETAILS
- 13-17. EROSION CONTROL BMP DETAILS
- EROSION CONTROL PLAN
- TYPE 1A INLET DETAIL
- TYPE 'P' MH DETAIL
- BEEHIVE DETAIL
- KEYMAP
- PLAT



IMPROVEMENT DISTRICT

**CITY OF WICHITA, KANSAS**  
**JAMES ARMOUR, P.E. - CITY ENGINEER**



Project Location  
**VICINITY MAP**

**Ruggles & Bohm, P.A.**  
 Engineering, Surveying, Land Planning  
 924 North Main (316) 264-8008  
 Wichita, Kansas 67203 (316) 264-4621 fax  
 www.rbkansas.com E-mail: info@rbkansas.com  
 Dec. 17, 2007 3190E