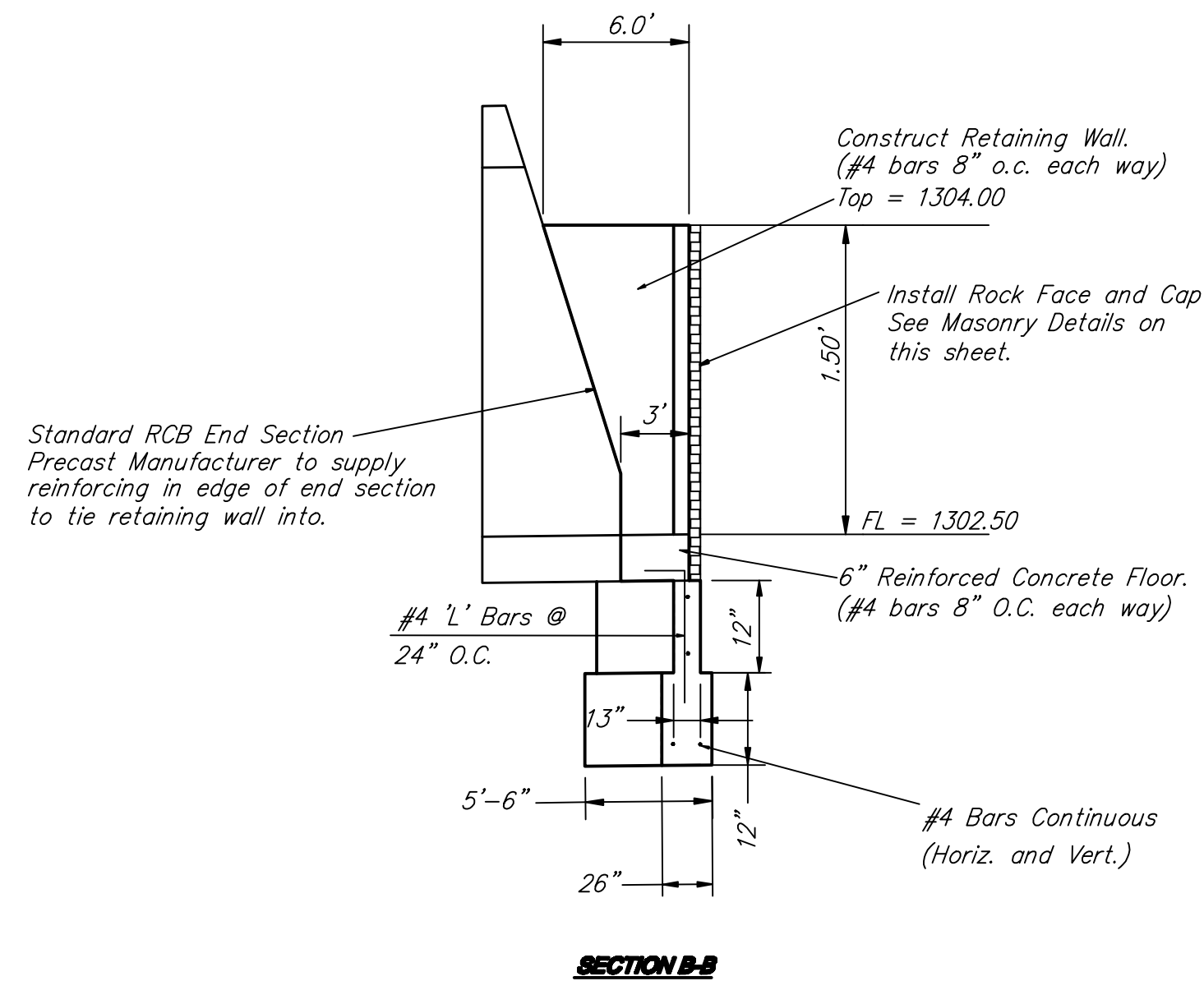
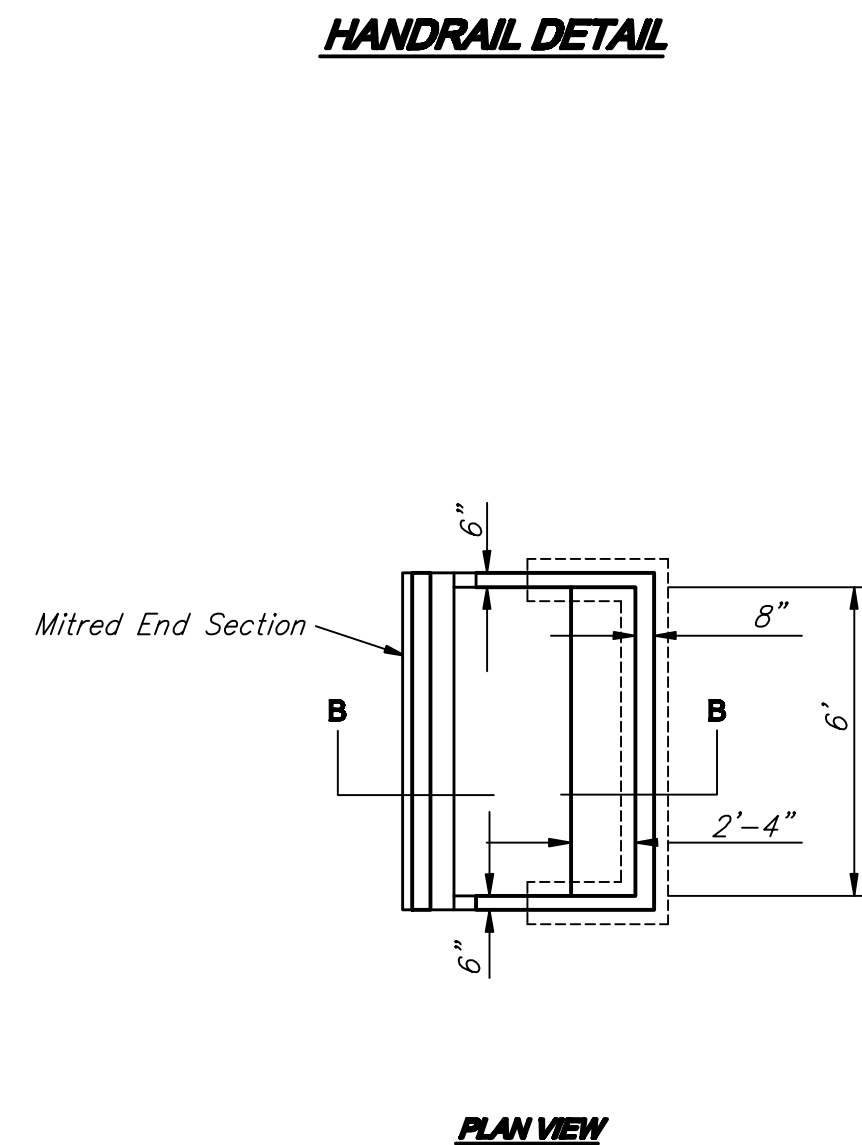


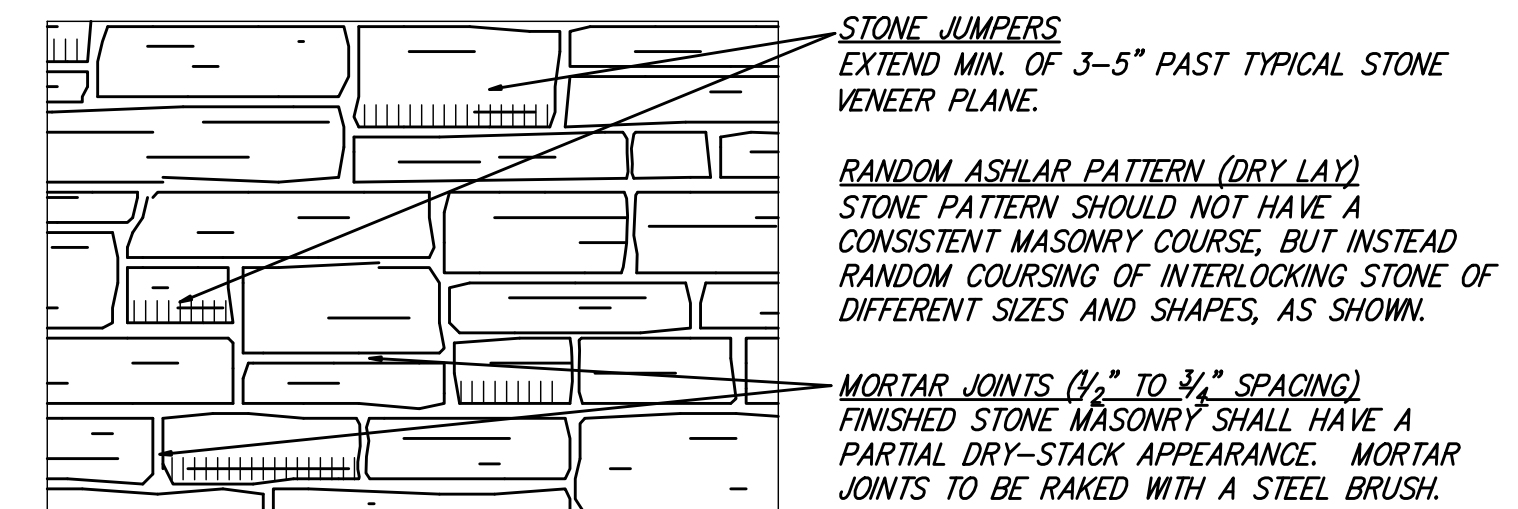
**CONCRETE SUPPORT FOR ROCK COLUMN**



**SECTION B-B**



**PLAN VIEW**



**STONE MASONRY**  
NOT TO SCALE

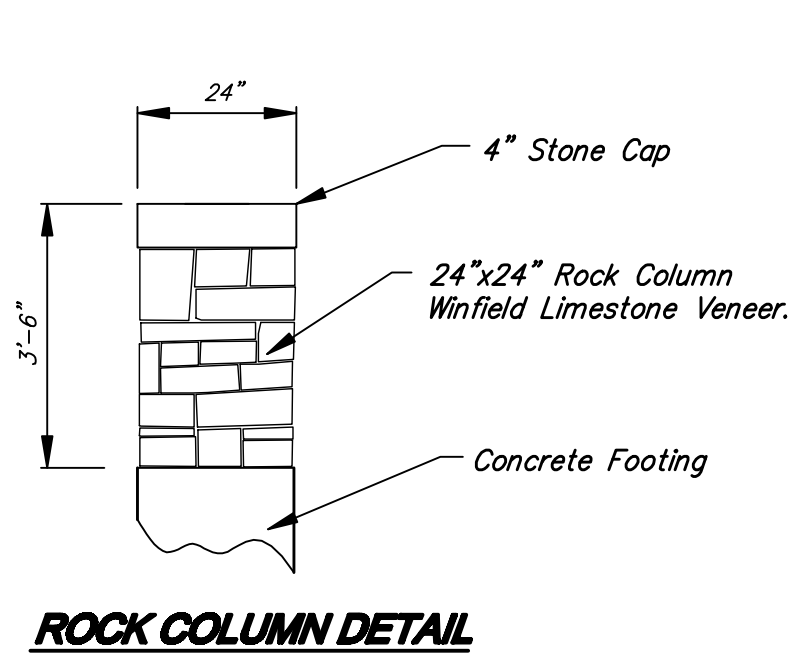
**GENERAL NOTES**

**STONE VENEER:**  
QUARRY: PRAY STONE COMPANY  
(620-221-7422)  
STONE: WINFIELD STONE  
FINISH: NATURAL CUT (OUT OF GROUND)  
BED THICKNESS: 3-5"  
LENGTH: 10-42"  
HEIGHT: 6-14"

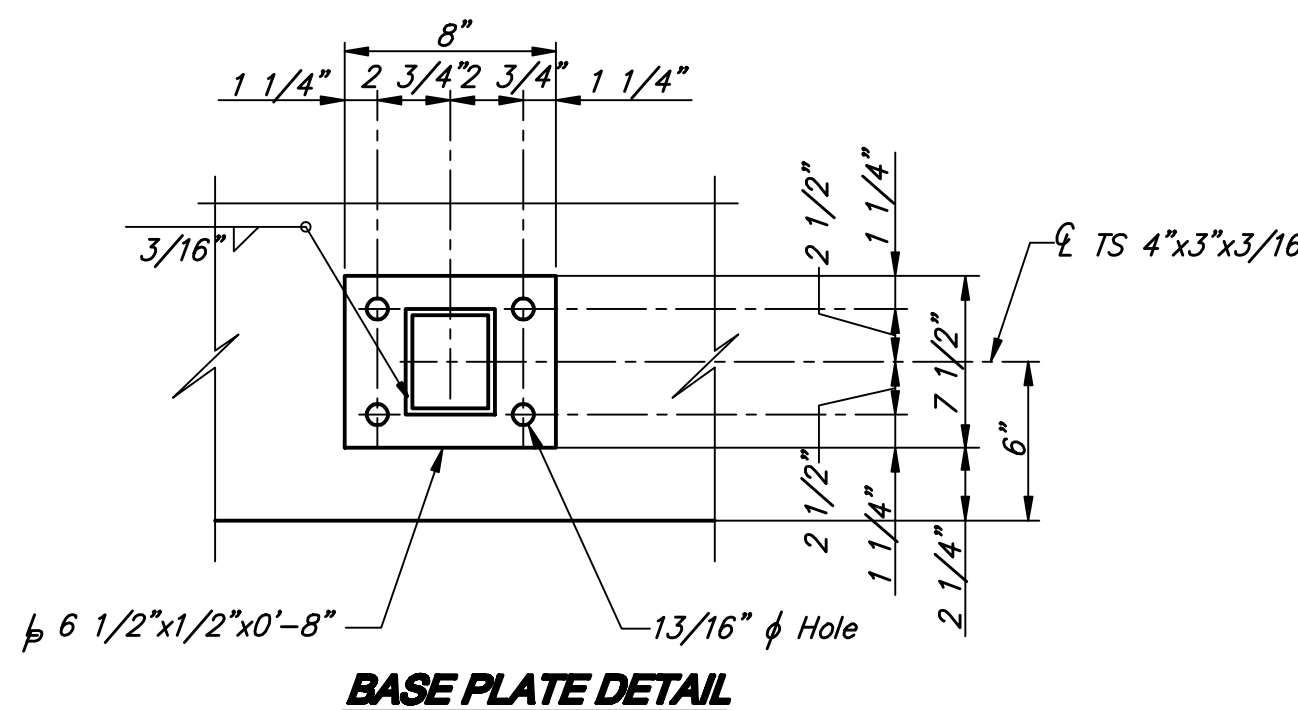
**MOCK-UPS:**  
CONTRACTOR SHALL BUILD A STONE MOCK-UP ON SITE PRIOR TO CONSTRUCTION OF MASONRY ON HEADWALLS OR COLUMNS (4' X 6'). OWNER'S REPRESENTATIVE/ LANDSCAPE ARCHITECT SHALL APPROVE MOCK-UP PRIOR TO COMMENCEMENT OF WORK.

**STONE CAPS (ON WEIR AND COLUMNS):**  
STONE CAPS SHALL BE 4" THICK, SMOOTH CUT WINFIELD LIMESTONE FROM PRAY STONE COMPANY. CAPS SHALL EXTEND 2" PAST THE FACE OF STONE VENEER PLANE.

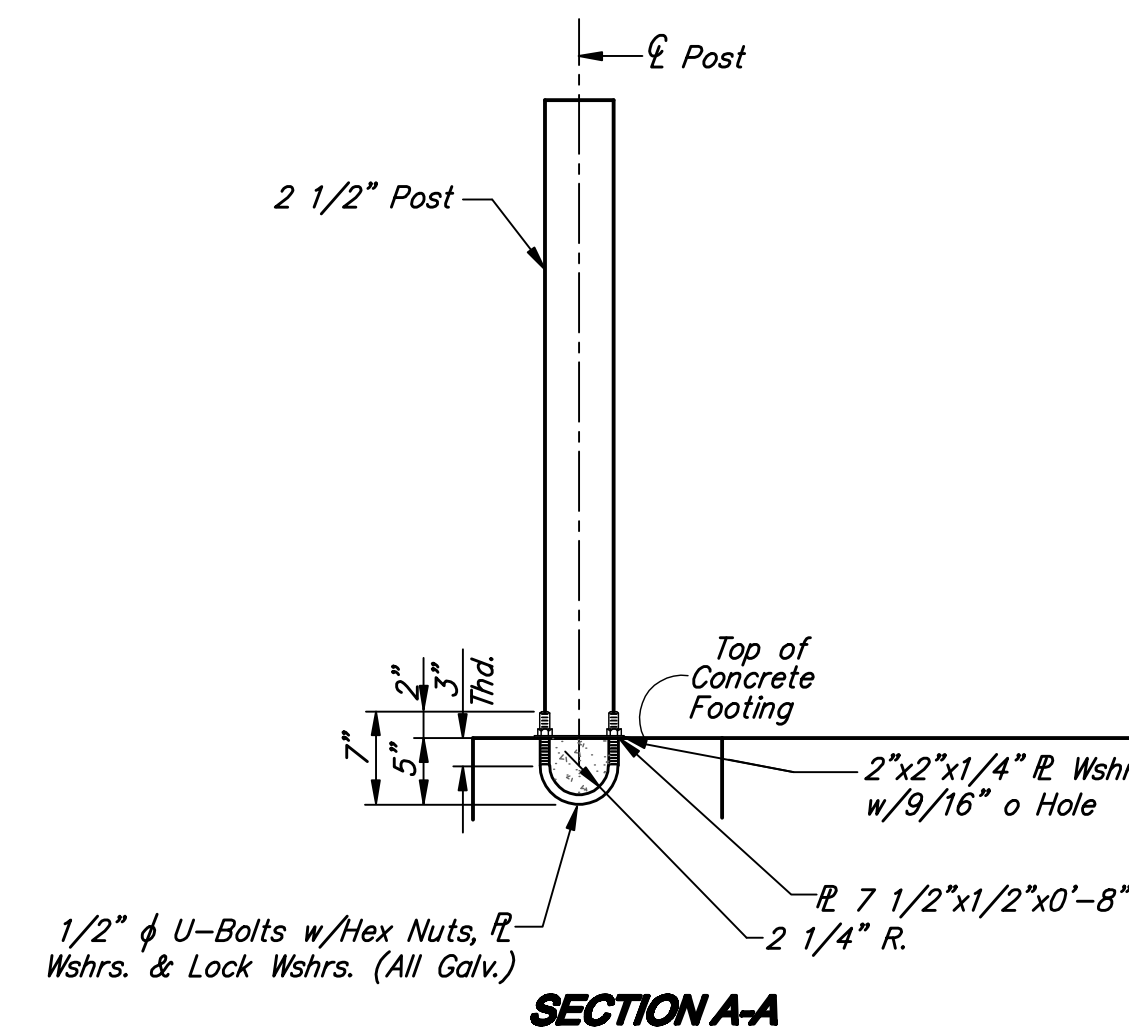
**WEIR WALL AT U/S END OF LINE 4**  
(Subsidiary to "6'x3' RCBC)



**ROCK COLUMN DETAIL**



**BASE PLATE DETAIL**



**SECTION A-A**

**BRIDGE HANDRAIL NOTES:**

The rail members shall conform to ASTM Designation A36 or equivalent.

Rail shall be fabricated in lengths to include a minimum of two and a maximum of three panels. Posts shall be set vertical. Shims may be used between concrete and base plates of posts.

All parts of Bridge Handrail shall be painted. Shop and field coats shall conform to organic or inorganic Zinc for primer and "High-Build Polyurethane Finish Coat" at the Standard Specifications for State Road and Bridge Construction, 2007 Edition, Kansas Department of Transportation. All materials, equipment and labor necessary for the installation of the Handrail on the bridge shall be subsidiary to the bid item, "Handrail".

Contractor to submit color chart to Engineer for approval. Touch Up: All bolts, nuts and studs and other small areas of damaged paint (10 S.F. or less) requiring touch up will be prepared and painted w/approved aluminum epoxy mastic primer.

ALL WORK AND MATERIAL ON THIS SHEET SHALL BE BID UNDER 'LUMP SUM' FOR HANDRAIL CONSTRUCTION.

<b>CAMBRIA ADDITION HANDRAIL DETAILS WICHITA, KANSAS</b>		<b>Ruggles &amp; Bohm, P.A.</b> Engineering, Surveying, Land Planning	834 North Main Wichita, Kansas 67203 www.rbkansas.com (316) 264-8888 (316) 264-4821 fax E-mail: info@rbkansas.com	AML AML QUALITY DATE Mar. 10, 2008	SHEET 12 OF 23
PROJECT FILE SWD Plan {Handrail Details}		PROJECT NUMBER 468-84481			