

N-5,043.7644, E-4,652.3387
 WL 2, Sta. 0+00.00-
 WL 1, Sta. 0+08.07
 1- 8" x 8" CI CL MJ Tee
 1- 8" Valve Assembly (N)
 (MJ Gate Valve)
 Top Valve Box El.= 227.50

City Maintenance End
 at Right-of-Way

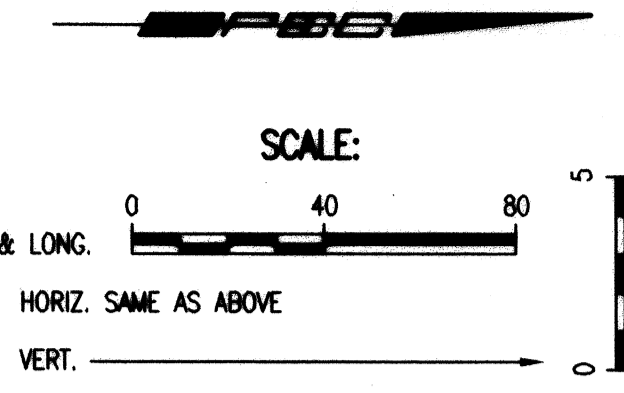
CAUTION !!!
 Proposed 8"
 Sanitary Sewer

N-5,082.1974, E-4,666.6244
 WL 2, Sta. 0+41.00
 1- 8" CI CL MJ 45° Bend
 1- 8" CI CL PE 22 1/2" Bend
 Defl.= 69° 36' 35"

N-5,082.1974, E-4,699.9265
 WL 2, Sta. 0+74.30
 1- 8" CI CL MJ 90° Bend
 Defl.= 90° 00' 00"

N-5,196.4803, E-4,714.1646
 WL 2, Sta. 1+88.58
 1- Fire Hydrant Assembly CLOW
 L= 20'
 Top Valve Box El.= 229.90
 FH Bury Line El.= 229.80
 1- 8" MJ Plug (W)

N-5,166.3913, E-4,988.5384
 WL 3, Sta. 0+31.00
 1- Fire Hydrant Assembly CLOW
 L= 4'
 Top Valve Box El.= 225.85
 FH Bury Line El.= 225.75
 1- 8" MJ Plug (W)



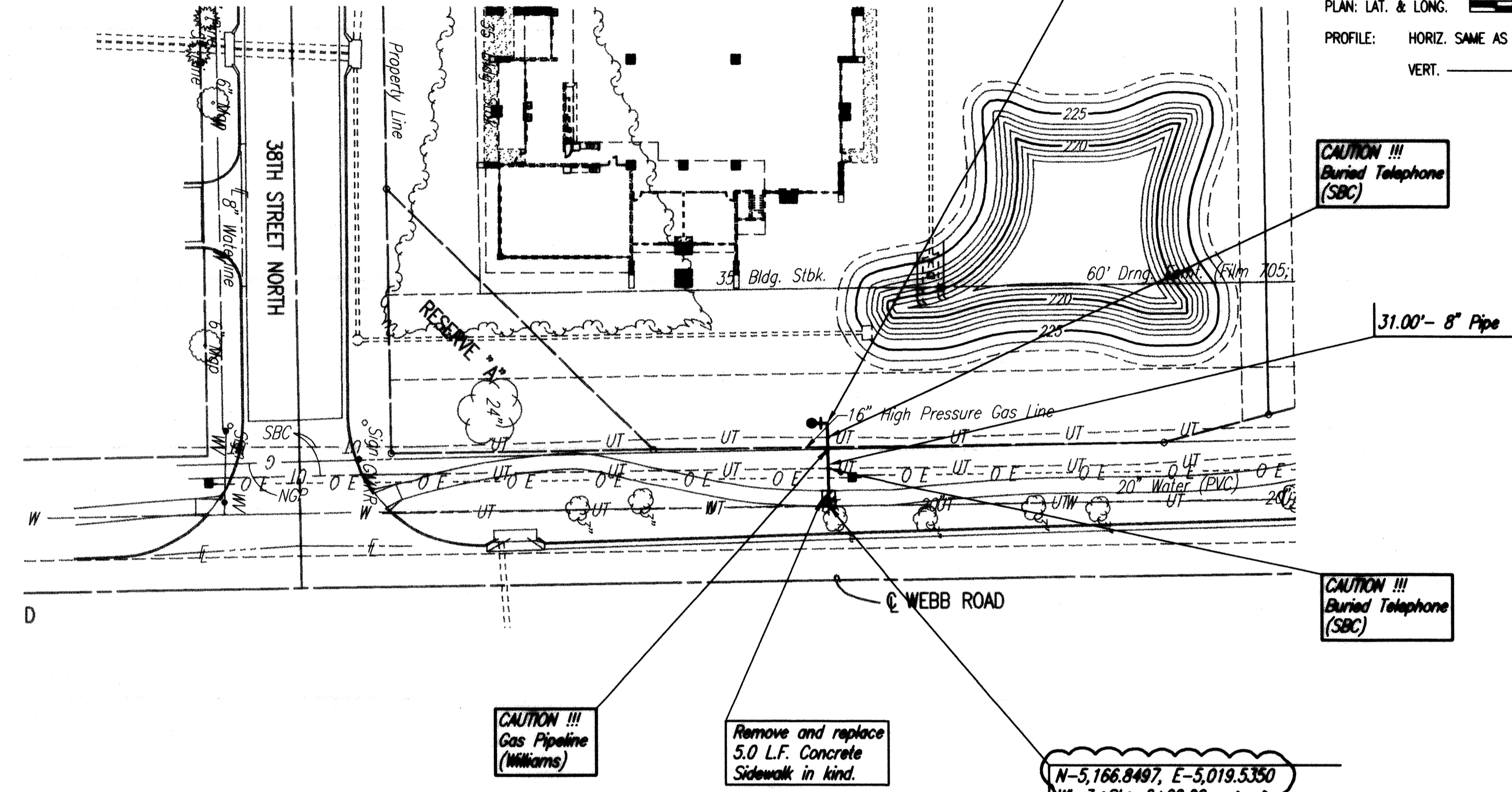
Waterline No. 1
 See Sh. C4.3

41.00'- 8" Pipe

33.30'- 8" Pipe

114.28'- 8" Pipe

FUTURE
 BUILDING T
 20,000 S.F.



CAUTION !!!
 Buried Telephone
 (SBC)

31.00'- 8" Pipe

CAUTION !!!
 Buried Telephone
 (SBC)

CAUTION !!!
 Gas Pipeline
 (Mikarns)

Remove and replace
 5.0 L.F. Concrete
 Sidewalk in kind.

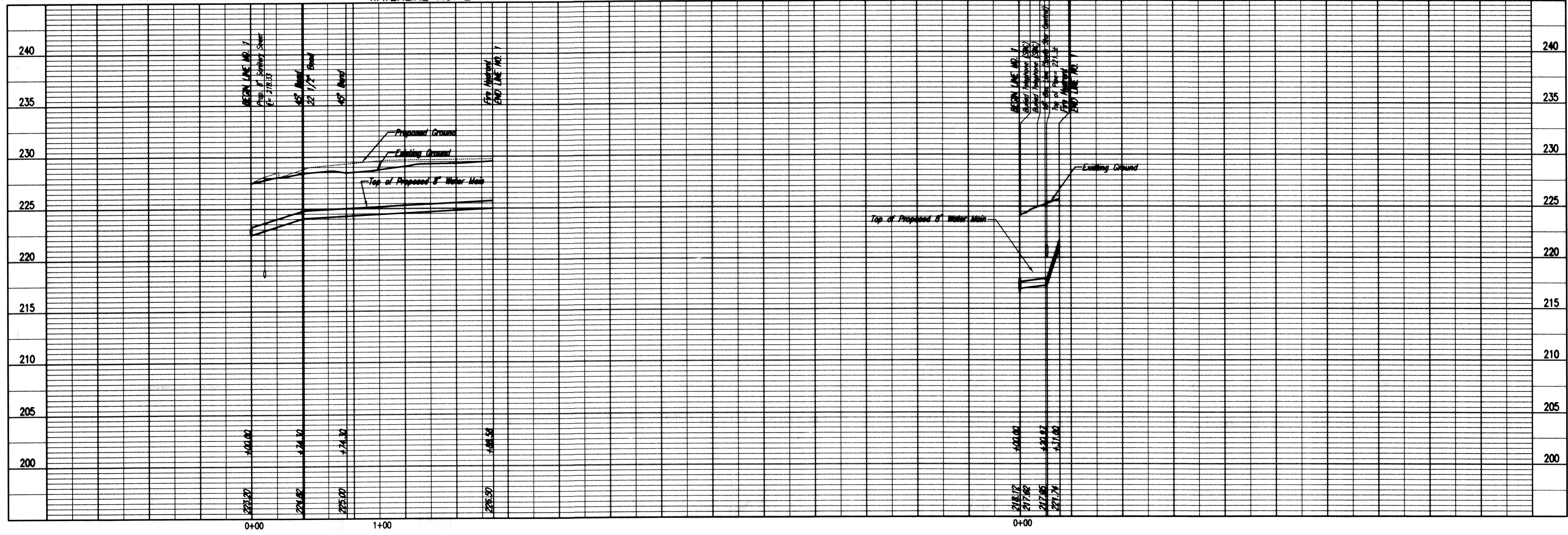
N-5,166.8497, E-5,019.5350
 WL 3, Sta. 0+00.00
 Existing 20" Water Main *
 1- 20" x 8" Tapping Sleeve
 1- 8" Tapping Valve
 1- 6" Valve Box
 (To be furnished and set by
 City of Wichita Water Dept.)
 Top Valve Box El.= 224.30
 Contractor shall reimburse the
 City of Wichita for this work.

1- 20"x12" Tapping Sleeve
 1- 12" Tapping Valve
 1- 12" to 8" Reducer

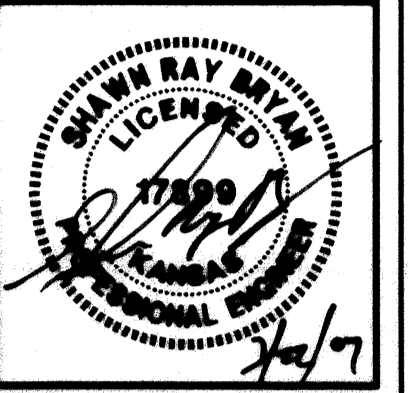
* PRIOR TO BEGINNING CONSTRUCTION, THE CONTRACTOR SHALL EXCAVATE THE EXISTING 20" WATERLINE AT WL 3 STATION 0+00.00 TO VERIFY PIPE SIZE, TYPE, FITTINGS, AND HORIZONTAL AND VERTICAL LOCATION. THE CONTRACTOR SHALL REPORT HIS FINDINGS TO THE ENGINEER SO THAT ANY NECESSARY PLAN MODIFICATIONS MAY BE MADE. ANY ADDITIONAL LABOR OR MATERIALS NECESSARY TO COMPLETE THE CONNECTION SHALL BE CONSIDERED SUBSIDIARY TO THE PROJECT.

WATERLINE NO. 2

WATERLINE NO. 3



Architectural Development Services, L.L.C.
 P.O. Box 48406
 Wichita, Kansas 67201
 Phone: 316 988-6343
 Fax: 316 988-8064



Ethanol Products Corporate Headquarters
 38th and Webb Road
 Wichita, Kansas

prints issued
 3-9-07
 For Construction

project no.
 06122

drawn S.A.W. check G.M.B.

WATERLINE
 PLAN/PROFILE

C4.4

of

Professional Engineering Consultants, P.A.
 303 S. FORECK • WICHITA, KANSAS 67202 • 316-262-2891 • FAX 316-262-3003
 www.pec1.com

Saved 03-21-2007 5:27:42 PM by S.W.
 Plot Scale 1:40 03-21-2007 5:28:29 PM by S.W.
 C:\2008\0626\Site Con\Private Plans\Waterline\0626-C4.4-Rep-WUP2