

GENERAL NOTES:

1. City of Wichita Datum.
2. Contractor will be required to provide a minimum advance notice of twenty-four (24) hours to utility companies prior to starting any excavation as follows:

Kansas One-Call 1-800-344-7233

The Contractor must notify the following in case of an emergency:

- Cox Cable
- Kansas Gas & Electric - Gas
- Kansas Gas & Electric - Electric
- Arkla Gas Company
- Southwestern Bell Tel. Co.
- City of Wichita Water Department
- City of Wichita Sewer Maintenance

3. Existing utility lines and their location, as shown on the plans, represent the best information obtainable for design. The contractor will be required to work around existing utilities within the right-of-way which do not conflict with proposed construction.

4. Rubble from the removal of miscellaneous structures and excess excavation which is to be wasted shall be disposed of on sites to be provided by the Contractor. These sites shall be approved by the Engineer as to suitability, appearance and site location. Locations that, in the opinion of the Engineer, will leave an unsightly appearance will not be approved.

All disposal sites must be approved by the Kansas Department of Health and Environment. Material either stockpiled or disposed of in a flood plain would require a Kansas State Board of Agriculture permit. Any material dumped in waters of the United States or wetlands is subject to U.S. Corps. of Engineers permitting regulations. Any material buried or stockpiled beyond approved construction limits would require additional archaeological investigations unless buried in a previously approved borrow location.

5. The Contractor shall be responsible for maintaining continuous flow of sewage through construction. Contractor's proposed method for maintaining sewage flow shall be approved by the Engineer. Cost of maintaining flow of sewage through construction will not be paid for directly and this cost shall be considered subsidiary to the other pay items of the work.

6. The Contractor shall be responsible for preserving property irons. The Contractor will be required to re-establish any property irons which are damaged or destroyed by construction operations. Such irons shall be re-established by a licensed land surveyor in accordance with state laws.

7. Trees and shrubs in public right-of-way which are in direct conflict with proposed new construction shall be removed by the Contractor with the Engineer's approval. Trees and shrubs which are not in direct conflict with the proposed new construction shall be saved and protected from damage.

8. Contractor shall vacuum test all manholes according to the City of Wichita standard specifications.

9. The tops of all Manholes to be set 0.4 feet above existing ground unless otherwise noted.

10. All areas disturbed by sewer construction, i.e. R/W, easements, and adjacent properties shall be restored with the same grass/sod as per AR 78.

11. Contractor shall maintain all existing BMP(s) on project site during construction. Contractor shall repair or replace any existing BMP(s) that are damaged (Cost subsidiary to site restoration). If BMP(s) were damaged prior to contractor beginning work on project, notify construction inspector or engineer.

12. Contractor shall backfill trench with sand and flush per City of Wichita specifications.

13. Traffic control as necessary shall be per the latest addition of the MUTCD.

14. Depth & location of all existing utilities shown must be field verified.

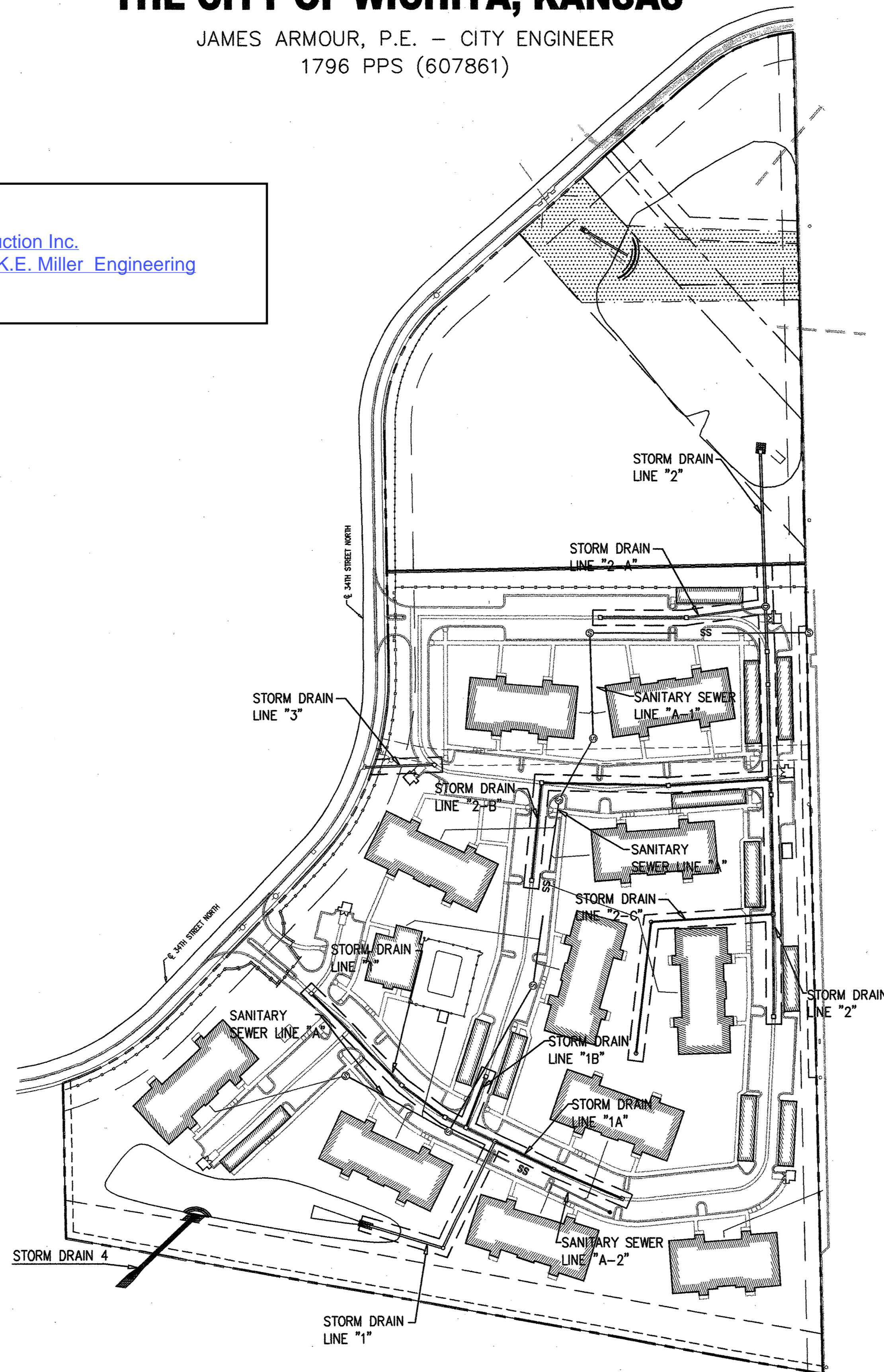
15. Prior to starting work within the K-96 right-of-way, the Contractor shall contact Ben Koerner, KDOT, 316-744-1271, and obtain a right of way permit.

As Built Plans
 Contractor: Mies Construction Inc.
 Inspector: Larry Gann, K.E. Miller Engineering
 .pdf by nathan 5-1-08

CONSTRUCTION PLANS
 PRIVATE SANITARY SEWER AND STORM DRAIN EXTENSIONS
Lots 1 and 2, Block 1 and Lot 1, Block 2 Killarney Plaza Second Addition

TO
THE CITY OF WICHITA, KANSAS

JAMES ARMOUR, P.E. - CITY ENGINEER
 1796 PPS (607861)

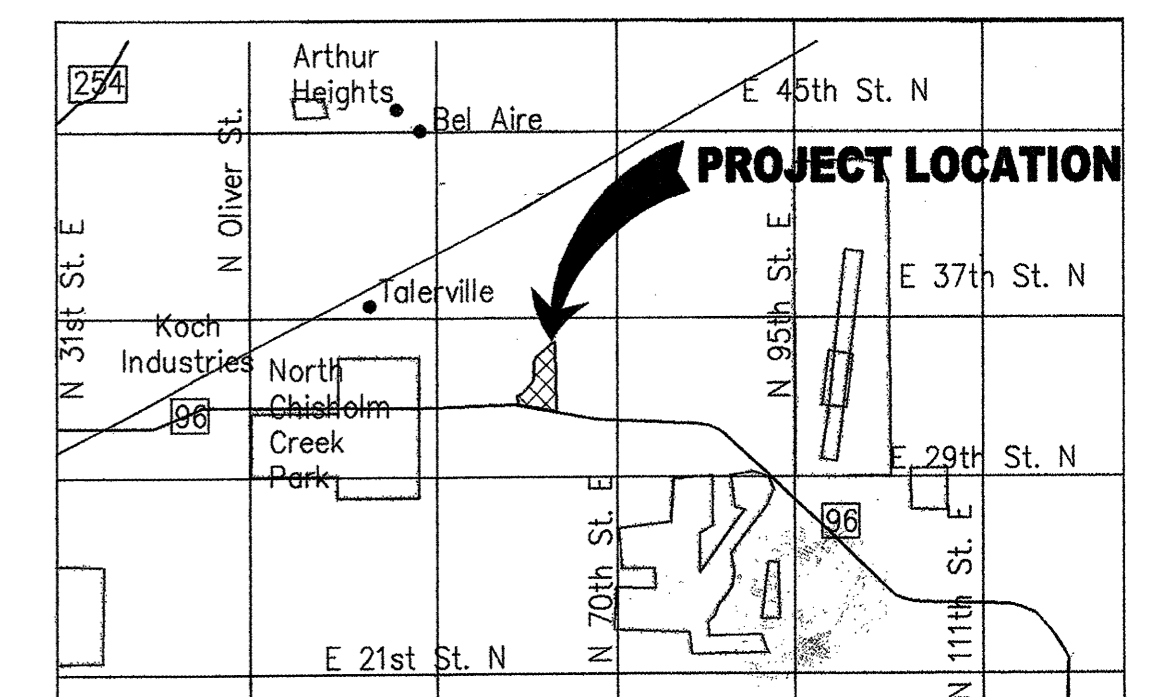


BENCH MARKS

City of Wichita Bench #3 from plat of Killarney Plaza Second Addition " " cut on top curb at W. end of N.W. Return at 36th & Inwood. Elev. 183.53'(City Datum) Elev. 1187.40'(1929 NAVD)

INDEX

TITLE SHEET	SHEET 1
SANITARY SEWER PLAN AND PROFILE	SHEET 2-3
STORM SEWER PLAN AND PROFILE	SHEET 4-13
SANITARY SEWER DETAILS	SHEET 14
WIER & INLET DETAILS	SHEET 15
EROSION CONTROL DETAILS	SHEET 16-20



LOCATION MAP
 No Scale

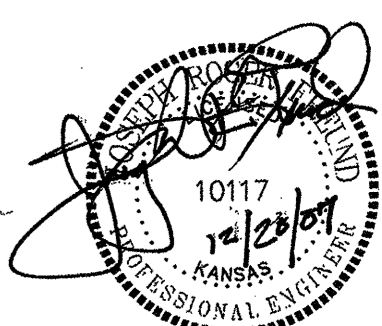
AUGUST 2007

PLANS PREPARED

BY



POE & ASSOCIATES, INC.
 CONSULTING ENGINEERS
 5940 E. Central, Suite 200 ■ Wichita, KS 67208-4242
 Phone 316/685-4114 ■ FAX 316/685-4444



APPROVED AS NOTED BY CITY ENGINEER OF WICHITA

SANITARY SEWER VRH 1/7/08
 STORM SEWER VRH 1/7/08

Inspection and testing for this project are to be provided by a Licensed Consulting Engineering Firm under contract with the Owner/Developer. Said inspection is to be in accordance with the City of Wichita standard construction engineering practices and certified by a Licensed Professional Engineer. No work shall be performed in dedicated easements or public right-of-way by the Contractor without such inspection nor shall work be commenced without written authorization by the City Engineer. All construction and materials shall comply with the City of Wichita Specifications and Standards (on file and available in the City Engineer's Office).