

WATER LINE & FIRE HYDRANT TO SERVE

Linwood Acres

Lots 48-50

C.J.J. Addition

Lot 1

Private Project Number: 1359 PPW (607853)

CITY OF WICHITA, KANSAS

James Armour, P.E. City Engineer

October 2007

Bench Marks:

Site bench mark set in south face of overhead electric pole north of Kellogg Drive and east of proposed entry drive. Elev. = 1361.61 (MSL)

Index

Title/Plan/Profile Sheet	1
Water Detail Sheet	2
Copy of Quarter Section	3
BMP Erosion Details	Available On Request

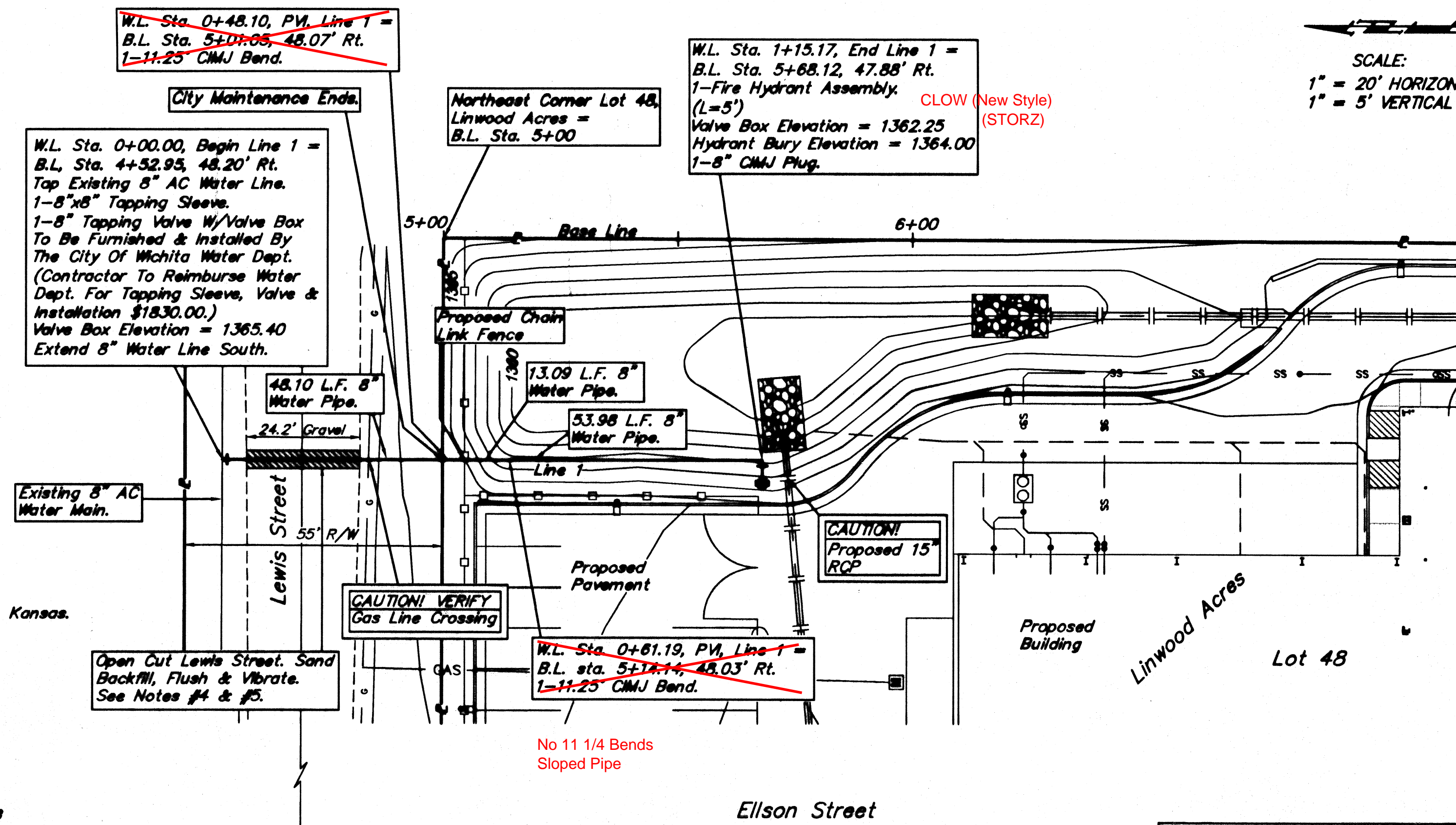
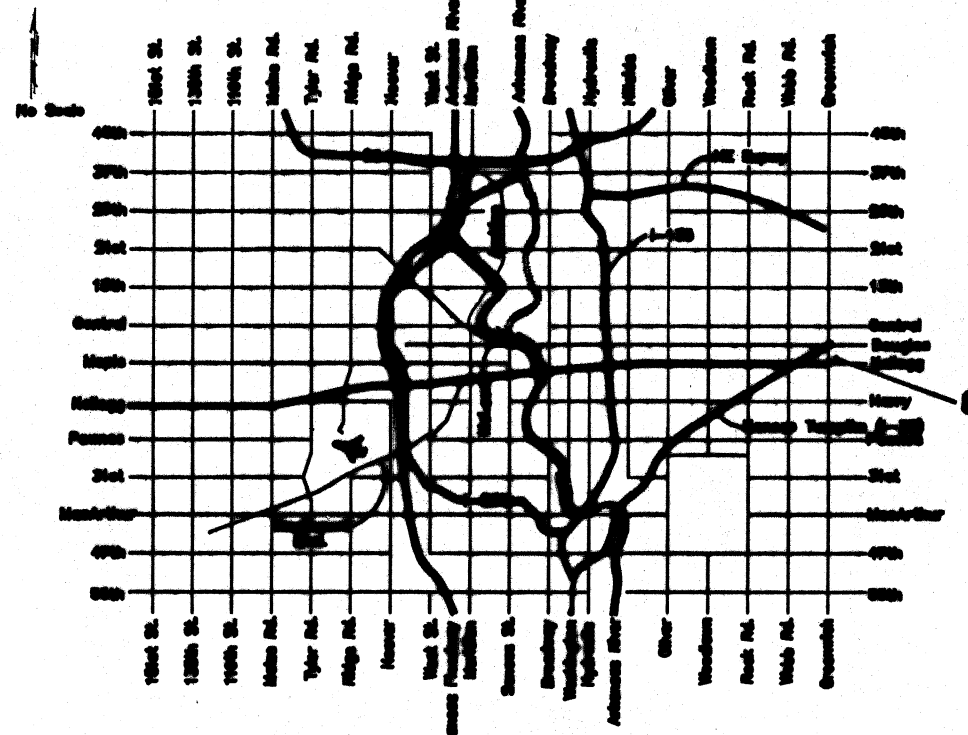
Legal Description

Lots 48-50, Linwood Acres, Sedgwick County, Kansas. Lot 1, C.J.J. Addition, Wichita, Kansas.

General Notes

- Contractor will be required to provide notice to utility companies a minimum of forty-eight (48) hours prior to any excavation, as follows:
Kansas One-Call 687-2470
The Contractor must notify the following in case of an emergency:
Cox Communications 262-4270
Kansas Gas Service Company 1-888-482-4950
Wester Energy (Electric) 383-8650
Aquila Energy (Gas) 1-800-303-0357
SBC (Telephone) 1-800-286-8313
City of Wichita Water Dept. (Water) 262-8000
City of Wichita Sewer Maint. (SS) 262-8000
City of Wichita Storm Sewer Maint. 268-4090
City of Wichita Traffic Maint. 268-4034
- Utility service lines, poles, valve boxes, meters, et cetera are to be adjusted as necessary by others prior to construction unless the plans specifically call for their adjustment by the Contractor or unless the plans specifically identify a utility to be adjusted by its owner during construction. Existing utilities and their location, as shown on the plans represent the best information obtainable for design and shall be field verified. The contractor will be required to work around existing utilities within the right-of-way which do not conflict with proposed construction.
- Rubble from the removal of miscellaneous structures and excess excavation which is to be wasted shall be disposed of on sites to be provided by the Contractor. These sites shall be approved by the Engineer as to suitability, appearance and site location. Locations that, in the opinion of the Engineer, will leave an unsightly appearance will not be approved. All disposal sites must be approved by the Kansas Department of Health and Environment. Material either stockpiled or disposed of in a flood plain would require a Kansas State Board of Agriculture permit. Any material dumped in waters of the United States or wetlands is subject to U.S. Corps of Engineers permitting regulations. Any material buried or stockpiled beyond approved construction limits would require additional archaeological investigations unless buried in a previously approved borrow location.
- Barriers and detour signage shall be in accordance with the Manual On Uniform Traffic Control Devices.
- Top 8" of road surface shall be a sand/gravel mix meeting KDOT specification SA-6 from 1990-Standard Specifications, Materials Division, Subsection 1112 Aggregates, Aggregates For Surfacing Or Resurfacing.
- Contractor shall not start work on the project until the project inspector is assigned to the project and is present on the site. Contractor shall not start on the project until all necessary bonds and permits have been obtained. Bonds may include but are not limited to Statutory, Performance & Maintenance for areas in public right-of-way and easement. For projects within the City of Wichita contact Tom Mason (268-4574). Any work done without inspection will be required to be uncovered for inspection.
- Water lines & appurtenances shall be installed in accordance with the most recent edition of City of Wichita, Kansas Standard Specifications for the Construction of City Projects.
- All disturbed R/W areas not intended for pavement or sidewalk construction shall be seeded with Kansas Premium Fescue Blend at a rate of 8 lb./1000 Sq. Ft., fertilized with a 16-20-6 ratio at a rate of 4 lb./1000 Sq. Ft. and mulched with Prairie Hay at a rate of 92 lb./1000 Sq. Ft. Mulch shall be "patted" with forks or punched into soil to reduce loss due to wind.
- Opening and closing of water valves shall be done slowly to prevent damage to the water distribution system from water hammer. All valves closed by the contractor must be reopened as new construction permits. Project inspector must ascertain that any valve closed by the contractor is reopened. Contractor will be permitted to operate water valves only when the project inspector assigned to the project is present.

Location Map



SCALE: 1" = 20' HORIZONTAL 1" = 5' VERTICAL

Contractor To Use Extreme Caution When Excavating Near Utility Lines. Contractor To Hand Dig To Expose All Utility Lines Prior To Construction. Verify Depth To Determine Conflict If Any.

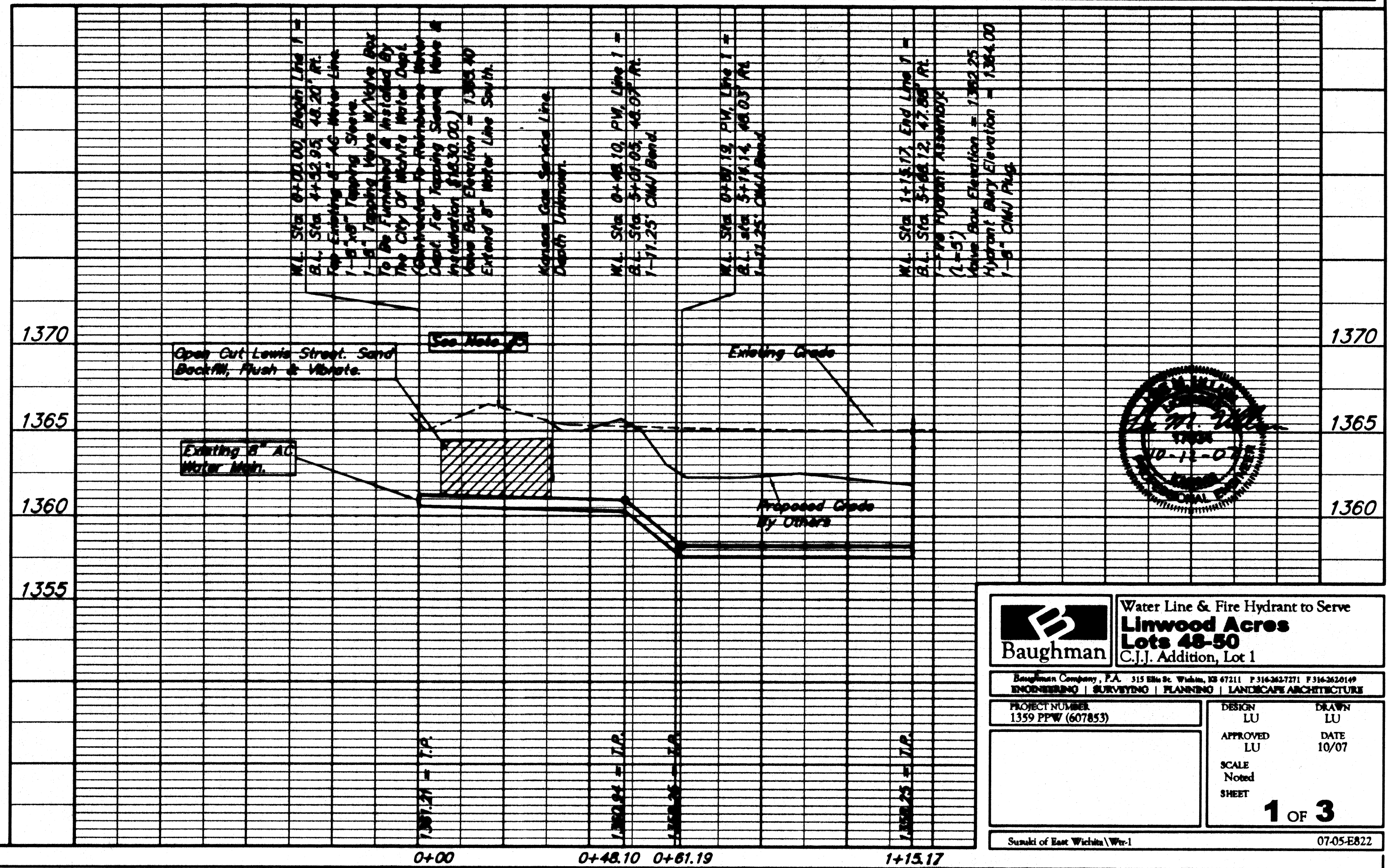
APPROVED AS NOTED BY CITY ENGINEER OF WICHITA, BY WICHITA WATER & SEWER DEPARTMENT, & BY WICHITA FIRE DEPARTMENT

Public Works [Signature] 10/17/07
Water & Sewer [Signature] 10/29/07
Fire [Signature] 10/31/07

NOTE TO CONTRACTORS

Public Property: Inspection and testing for the waterline is to be provided by a Licensed Consulting Engineering Firm under contract with the Owner/Developer. Said inspection to be in accordance with the City of Wichita standard construction engineering practices and certified by a Professional Engineer Licensed in the state of Kansas. No work shall be performed in dedicated easements or public right-of-way by the Contractor without such inspection nor shall any work be commenced without written authorization by the City Engineer. All Construction and Materials shall comply with the City or Wichita Specifications and Standards (on file and available in the City Engineer's Office).

Private Property: Installation and testing for the fire protection line is to be performed by a City of Wichita licensed fire protection contractor in accordance with the fire codes as adopted by the City of Wichita. All material and construction practices for the fire protection line shall comply with the fire codes as adopted by the City of Wichita (available from the City of Wichita Fire Department). The Contractor shall not commence work without notification and approval of the Wichita Fire Department. Inspection of the fire protection line is to be provided by a licensed Engineering Firm under contract with the Owner/Developer and the Fire Department. The contractor shall not start work until the project inspector is assigned to the project and present on the site. Any work done without inspection will be required to be uncovered for inspection.



Baughman Water Line & Fire Hydrant to Serve Linwood Acres Lots 48-50 C.J.J. Addition, Lot 1

ENGINEERING | SURVEYING | PLANNING | LANDSCAPE ARCHITECTURE

PROJECT NUMBER: 1359 PPW (607853)	DESIGN: LU	DRAWN: LU
	APPROVED: LU	DATE: 10/07
	SCALE: Noted	SHEET: 1 OF 3

Seal of the City of Wichita, Kansas

As Built Plans: CONTRACTOR: McCullough Excavation INSPECTOR: Larry Gann, K E Miller Engineering .PDF by: KLM, 05-28-2008