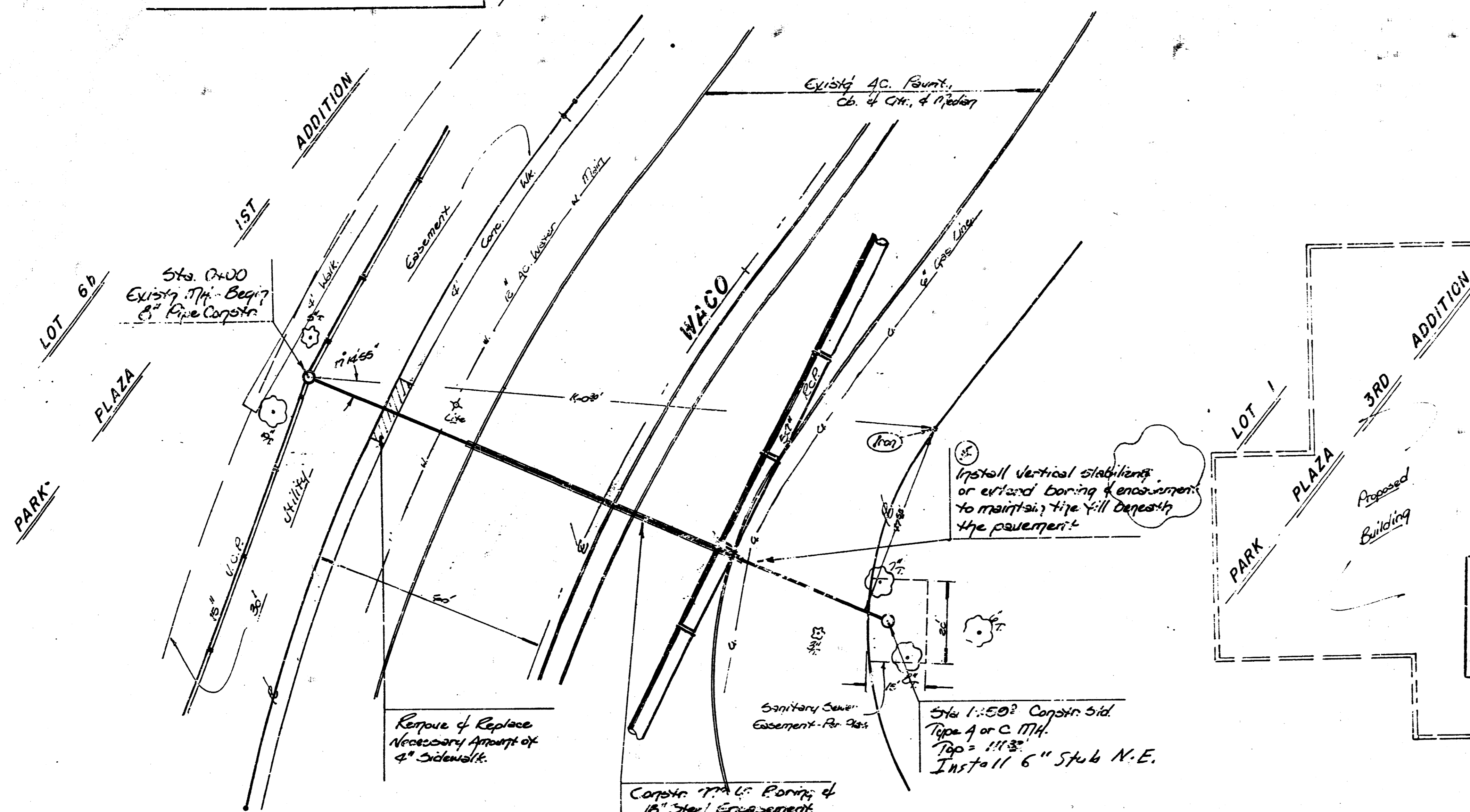
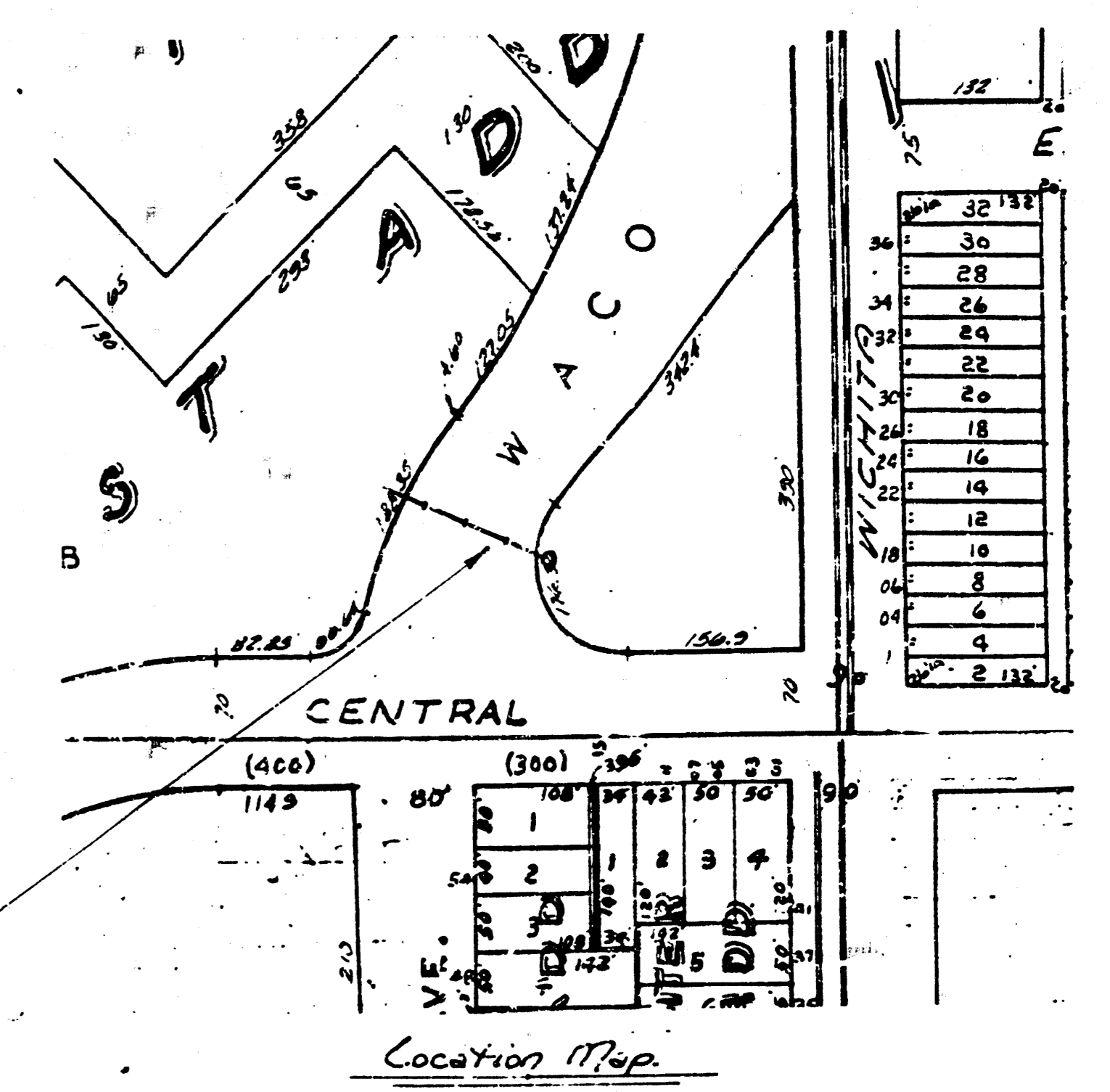


17th Approx. 425' N. N.C. Central
200.

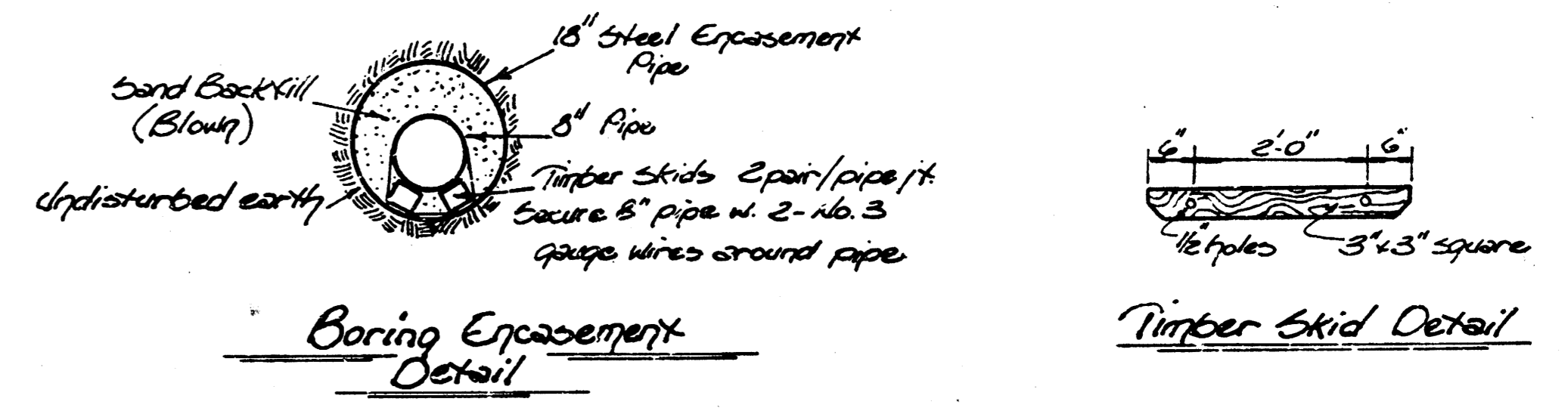


Scale: 1" = 20' Plan
1" = 5' Profile View
1" = 20'



NOTE TO CONTRACTOR
This project will be constructed under the supervision of the CITY ENGINEER and conforming to the SPECIFICATIONS of the CITY OF WICHITA. The CONTRACTOR will prepay the City of Wichita for all costs of inspection.

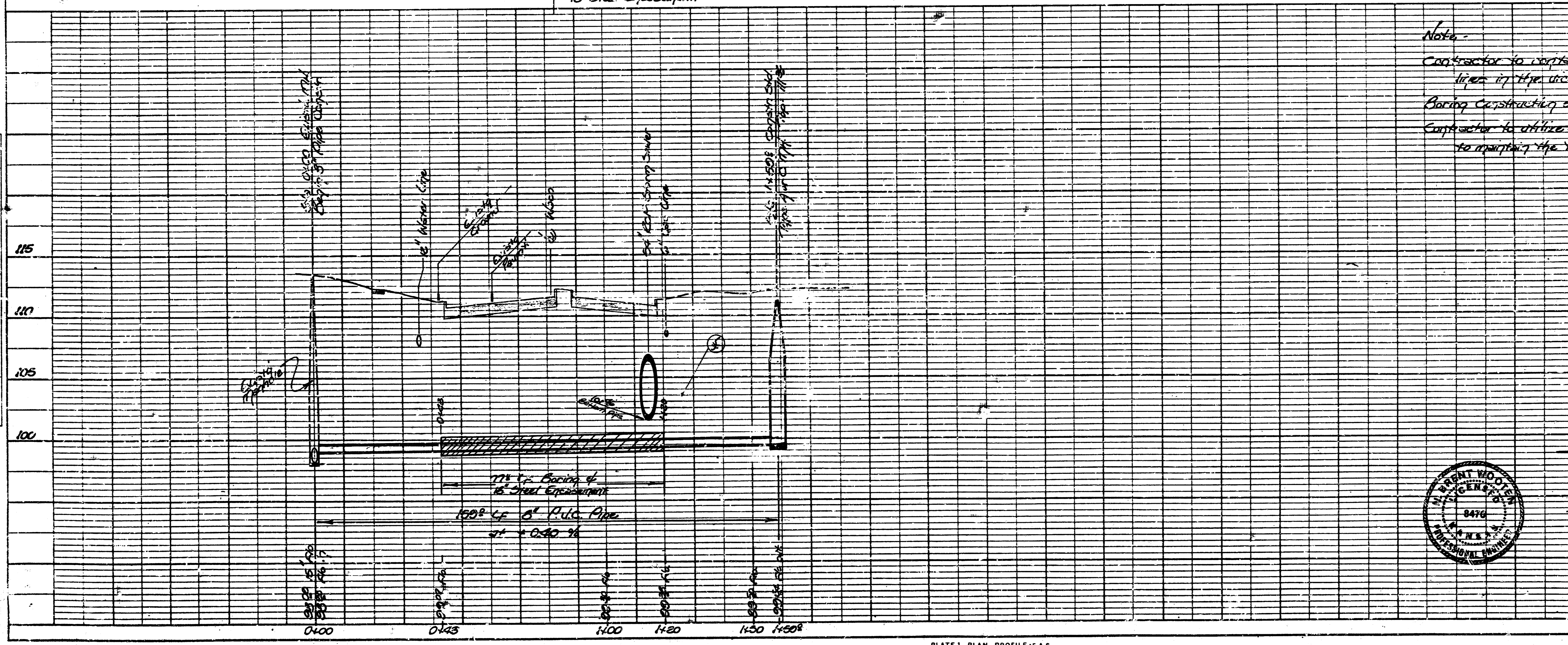
7-23-82
APPROVED AS NOTED
By CITY ENGINEER OF WICHITA
Sanitary Sewers *P.L.S.*
Storm Sewers
Driveway Approaches



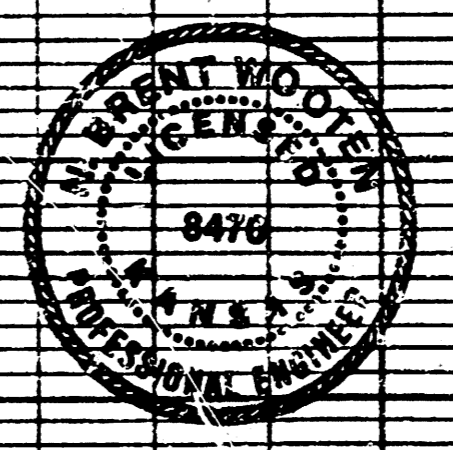
Remove & Replace Necessary Approach of 4" Sidewalk.

Sanitary Sewer Encasement - Per Plan
Sta. 1+50.00 Condit. Sid. Type 1 or C. 1774. Top = 114.3'. Install 6" Stub N.E.
Condit. 17th St. Boring of 18" Steel Encasement.

PROFILE
DATE
BY
CHECKED
DATE
BY
NOTE: SPAN UNDESIGNED FOR STRUCTURE NOTATION CHECK



Note:
Contractor to verify at Bell Telephone Co. to verify underground lines in the vicinity of the construction.
Boring construction shall conform to City of Wichita specifications.
Contractor to utilize vertical stabilizers or enlarged the boring & encasement to maintain the hill depth, the pavement.



PRIVATE SANITARY SEWER EXTENSION TO SERVE LOT 1, PARK PLAZA THIRD ADDITION.
CITY OF WICHITA, KS.
PROJECT NO. 468-76-245-80000-000-008

BAUGHMAN COMPANY, P.A.
SURVEYING & ENGINEERING
316/262-7271 • 330 LAURA • WICHITA, KANSAS 67211

PLATE 1 - PLAN - PROFILE - F.A.S.
CLEARPRINT PAPER CO., S.F. CAL.
NO. 1009-1

FILMED FROM THE BEST AVAILABLE COPY.....