

SANITARY SEWER PLANS FOR
PARK VISTA SECOND
PHASE 1
 AN ADDITION TO
 CITY OF BEL AIRE
 SEDGWICK COUNTY, KANSAS
 MAY 1998

GENERAL NOTES

1. THE CONTRACTOR SHALL BE RESPONSIBLE FOR PRESERVING PROPERTY IRONS. THE CONTRACTOR WILL BE REQUIRED TO RE-ESTABLISH ANY PROPERTY IRONS WHICH ARE DAMAGED OR DESTROYED BY HIS CONSTRUCTION OPERATIONS. SUCH IRONS SHALL BE RE-ESTABLISHED BY A LICENSED LAND SURVEYOR IN ACCORDANCE WITH STATE LAWS.
2. EXISTING UTILITIES AND THEIR LOCATIONS, AS SHOWN ON THE PLANS REPRESENT THE BEST INFORMATION OBTAINABLE FOR DESIGN. LOCATION INFORMATION HAS BEEN OBTAINED FROM THE VARIOUS UTILITY COMPANIES AND IS EITHER FROM COMPANY RECORD DRAWINGS OR COMPANY PROVIDED FIELD LOCATIONS. THE PLAN LOCATIONS SHOWN ARE NOT GUARANTEED. ADDITIONAL EXISTING UTILITIES MAY ALSO BE ENCOUNTERED.
3. CONTRACTOR WILL BE REQUIRED TO PROVIDE A MINIMUM ADVANCE NOTICE OF FORTY-EIGHT (48) HOURS TO UTILITY COMPANIES PRIOR TO STARTING ANY EXCAVATION AS FOLLOWS:

KANSAS ONE-CALL 1-800-344-7233
 or 687-2470 (LOCAL WICHITA)

THE CONTRACTOR MUST NOTIFY THE FOLLOWING IN CASE OF AN EMERGENCY:

SOUTHWESTERN BELL TELEPHONE COMPANY 1-800-734-7590
 CABLEVISION 263-2061
 KGOE (GAS & ELECTRIC) 393-8800
 CITY OF WICHITA WATER & SEWER MAINTENANCE 268-4806
 ARKLA GAS COMPANY 946-0096
 CITY OF BEL AIRE (Terry Drilling) 744-2451

4. RUBBLE FROM THE REMOVAL OF MISCELLANEOUS STRUCTURES AND EXCESS EXCAVATION WHICH IS TO BE WASTED SHALL BE DISPOSED OF ON SITES TO BE PROVIDED BY THE CONTRACTOR. THESE SITES SHALL BE APPROVED BY THE ENGINEER AS TO SUITABILITY, APPEARANCE AND SITE LOCATION. LOCATIONS THAT, IN THE OPINION OF THE ENGINEER, WILL LEAVE AN UNSIGHTLY APPEARANCE WILL NOT BE APPROVED. ALL DISPOSAL SITES MUST BE APPROVED BY THE KANSAS DEPARTMENT OF HEALTH AND ENVIRONMENT. MATERIAL EITHER STOCKPILED OR DISPOSED OF IN A FLOOD PLAIN WOULD REQUIRE A KANSAS STATE BOARD OF AGRICULTURE PERMIT. ANY MATERIAL DUMPED IN WATERS OF THE UNITED STATES OR WETLANDS IS SUBJECT TO U.S. CORPS OF ENGINEERS PERMITTING REGULATIONS. ANY MATERIAL BURIED OR STOCKPILED BEYOND APPROVED CONSTRUCTION LIMITS WOULD REQUIRE ADDITIONAL ARCHAEOLOGICAL INVESTIGATIONS UNLESS BURIED IN A PREVIOUSLY APPROVED BORROW LOCATION.
5. COST OF EXCAVATION, HAULING, AND DUMPING OF EXCESS EXCAVATION SHALL BE SUBSIDIARY TO THE PROJECT.
6. A PORTION OF EXCESS EXCAVATED MATERIAL SHALL BE MOUNDING AROUND MANHOLES WHICH EXTEND MORE THAN ONE (1) FOOT ABOVE THE EXISTING GROUND. SUCH MOUNDS SHALL BE CONSTRUCTED WITH A SIX (6) FOOT DIAMETER FLAT TOP WITH 4 TO 1 SIDE SLOPES DOWN TO THE ORIGINAL GROUND. THE ELEVATION OF THE FLAT TOP OF THE MOUND SHALL BE 0.4 FOOT BELOW THE TOP OF THE MANHOLE.
7. ALL STUBS AND PLUGGED PIPES SHALL BE LOCATED WITH GREEN PLASTIC TAPE IN THE SAME MANNER AS RISERS.
8. PRIOR TO LAYING SEWER LINES USING EXISTING STUBS IN EXISTING MANHOLES, THE CONTRACTOR SHALL EXPOSE AND VERIFY THE ELEVATION, GRADE AND ALIGNMENT OF EXISTING STUBS AND NOTIFY THE ENGINEER OF ANY DEVIATION FROM THE PLAN. WHERE CONNECTION TO AN EXISTING MANHOLE THAT DOES NOT HAVE AN EXISTING STUB OR THE STUB IS UNSERVICEABLE DUE TO ELEVATION GRADE OR ALIGNMENT, THE CONTRACTOR SHALL RESHAPE THE EXISTING MANHOLE INVERT TO PROVIDE SMOOTH FLOW. THE COST OF RESHAPING EXISTING MANHOLE INVERTS IS INCIDENTAL TO THE PROJECT.
9. TREES AND SHRUBS IN PUBLIC RIGHT-OF-WAY WHICH ARE IN DIRECT CONFLICT WITH PROPOSED NEW CONSTRUCTION SHALL BE REMOVED BY THE CONTRACTOR WITH THE ENGINEER'S APPROVAL. TREES AND SHRUBS WHICH ARE NOT IN DIRECT CONFLICT WITH PROPOSED NEW CONSTRUCTION SHALL BE SAVED AND PROTECTED FROM DAMAGE.
10. ALL DISTURBED AREAS TO BE SEEDED WITH RYE GRASS AT A RATE OF 200 LBS./ ACRE WITHIN 10 DAYS OF CONSTRUCTION. CONTRACTOR TO PREPARE GROUND PER CITY SPEC. COST IS SUBSIDIARY TO SITE PREPARATION AND RESTORATION.

BENCHMARKS

BM #1 "I" CUT TOP OF CURB N. END W. SIDE OLIVER DR.
 (OLIVER & 48TH ST. NO.)
 ELEV.=1406.235

BM #2 TOP OF CURB N. END W. SIDE GLENDALE
 (GLENDALE & 48TH ST. NO.)
 ELEV.=1410.695

BM #3 "I" CUT TOP OF CURB N. END E. SIDE BATTIN ST.
 (BATTIN & 48TH ST. NO.)
 ELEV.=1418.135

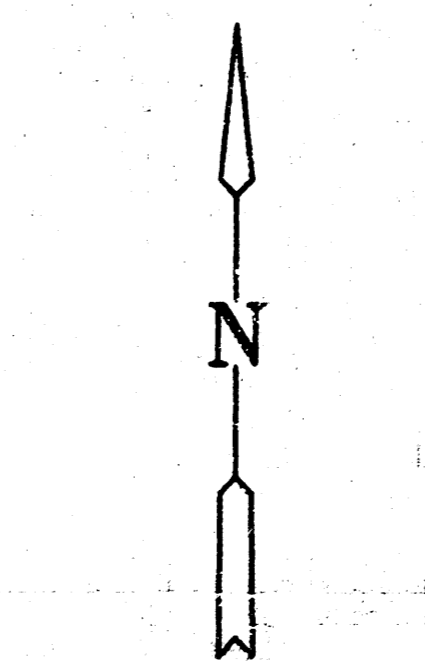
BM #4 "I" CUT NW COR. INLET W. SIDE ASHTON
 @ N.E. COR. LOT 3, BLK. 1, PARKVISTA ADD.
 ELEV.=1409.78

BM #5 "I" CUT ON TOP OF CURB N. SIDE ASHTON @
 @ S.E. COR. LOT 10, BLK. 1, PARKVISTA ADD.
 ELEV.=1411.76

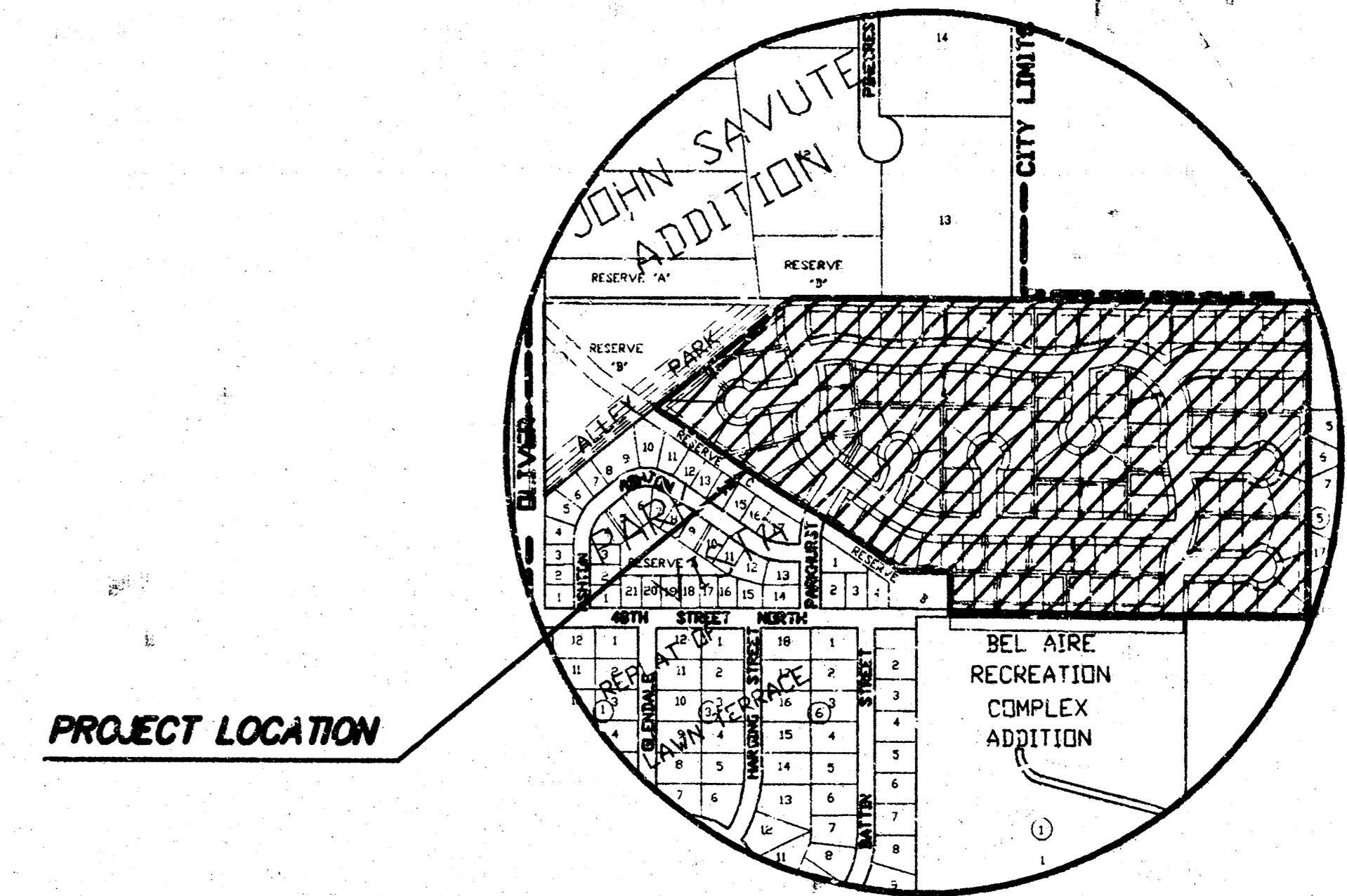
INDEX TO DRAWINGS

| SHEET NO. | DESCRIPTION |
|-----------|-----------------|
| 1 | TITLE SHEET |
| 2, 3 | MANHOLE DETAILS |
| 4 | LINE 1 |
| 5 | LINE 2, 4, 5 |
| 6 | LINE 2, 6 |
| 7 | LINE 3 |
| 8 | FINAL PLAT |

*Booked
 P. 66
 3-3-99
 RDL*



SCALE 1"=150'



PROJECT LOCATION

LOCATION MAP

APPROVED AS NOTED
 BY CITY ENGINEER OF WICHITA

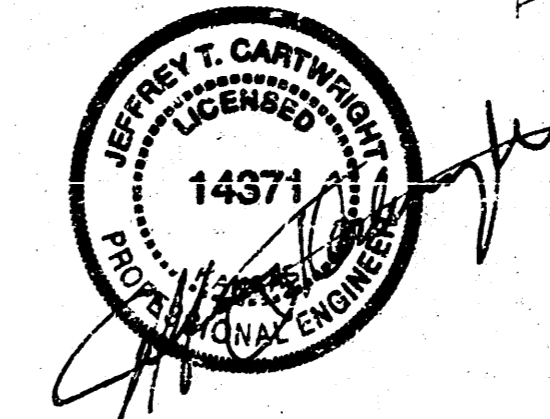
- SANITARY SEWERS _____
- STORM SEWERS _____
- DRIVEWAY APPROACHED _____
- WATER MAINS _____
- PAVING _____

NOTE TO CONTRACTOR

INSPECTION AND TESTING FOR THIS PROJECT IS TO BE PROVIDED BY A LICENSED CONSULTING ENGINEERING FIRM IN ACCORDANCE WITH THE OWNER/DEVELOPER. SAID INSPECTION TO BE IN ACCORDANCE WITH THE CITY OF WICHITA STANDARD CONSTRUCTION ENGINEERING PRACTICES AND CERTIFIED BY A LICENSED PROFESSIONAL ENGINEER. NO WORK SHALL BE PERFORMED IN DEDICATED EASEMENTS OR THE PUBLIC RIGHT-OF-WAY BY THE CONTRACTOR WITHOUT SUCH INSPECTION NOR SHALL ANY WORK BE COMMENCED IN DEDICATED EASEMENTS OR PUBLIC RIGHT-OF-WAY WITHOUT WRITTEN AUTHORIZATION BY THE CITY ENGINEER.

AS BUILT: 2/10/99

CITY OF WICHITA
 PRIVATE PROJECT NO. 803PPS (607861)

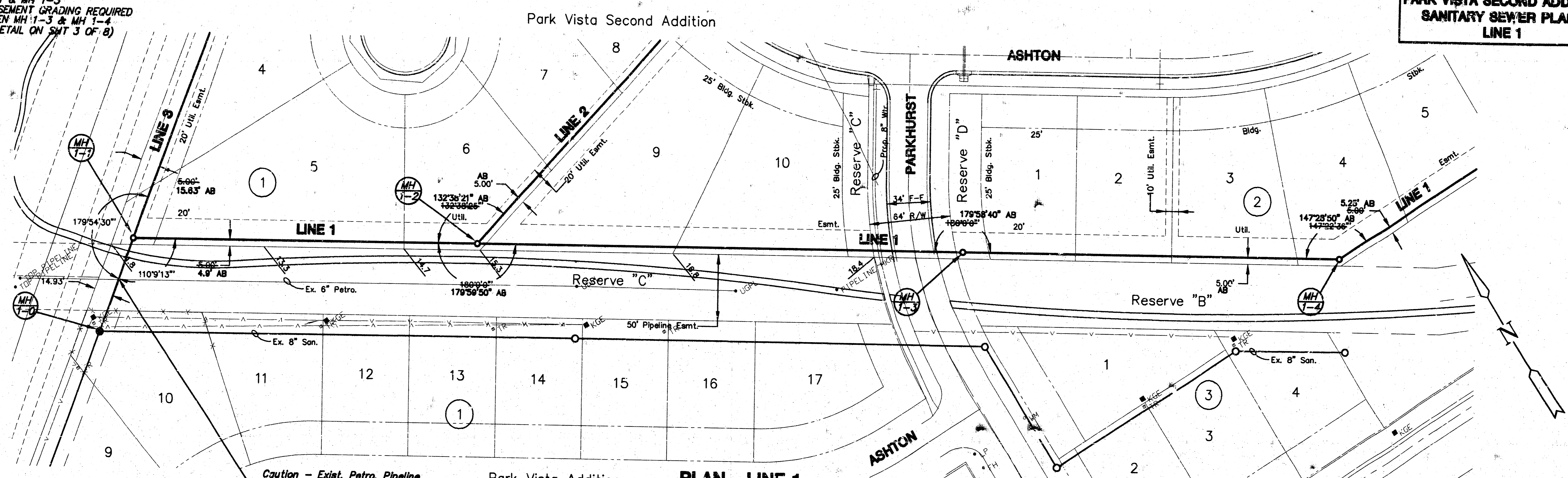


| | | |
|---|-----------|-------------|
| PARK VISTA SECOND ADDITION PHASE 1 | | |
| PROJECT NAME | | |
| SANITARY SEWER PLANS | | |
| SHEET TITLE | | |
| GJA | ASE | JTC |
| DESIGN BY: | DRAWN BY: | CHECKED BY: |
| MAY 1998 | 08021_87 | 1 / 8 |
| DATE | JOB NO. | ISSUED BY |
| 316-684-9600 | | |

1. BELTUBER SYSTEMS COMPANY, INC. THE PAT. 11 10 15 34 1999

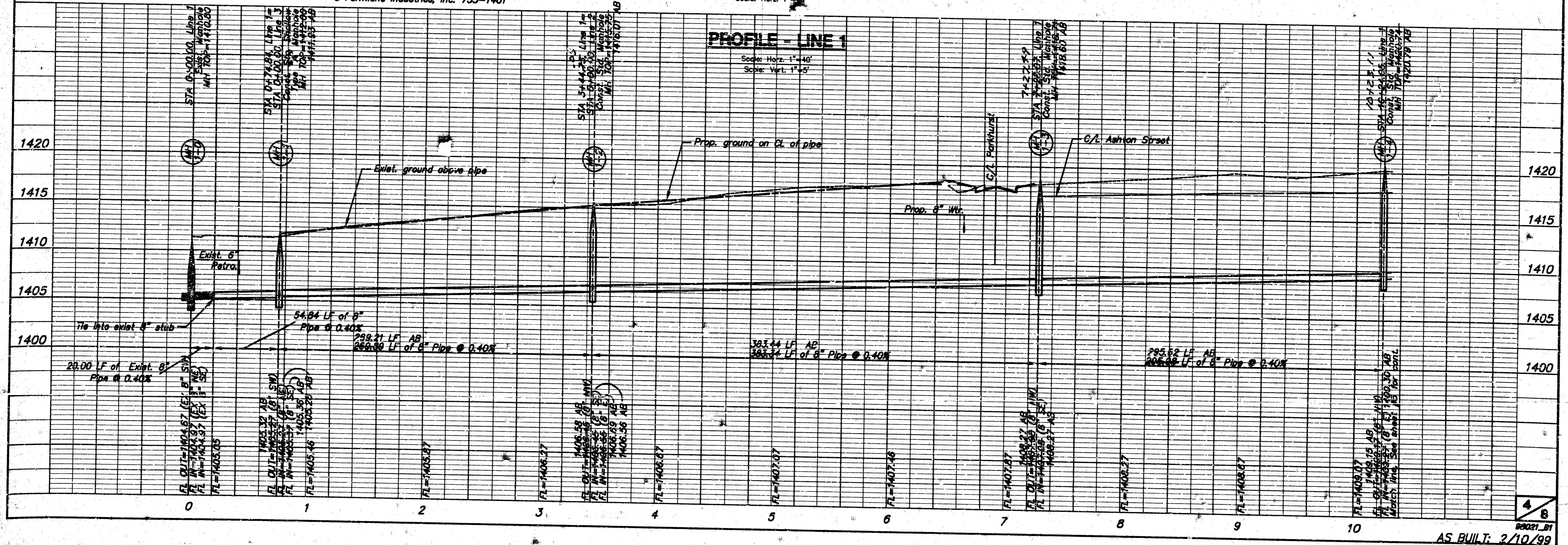
NOTE:
1. EASEMENT GRADING REQUIRED BETWEEN
MH 1-1 & MH 1-3
NO EASEMENT GRADING REQUIRED
BETWEEN MH 1-3 & MH 1-4
(SEE DETAIL ON SMT 3 OF 8)

**PARK VISTA SECOND ADDITION
SANITARY SEWER PLANS
LINE 1**



Caution - Exist. Petro. Pipeline
Contact Randy Flanul
© Farmland Industries, Inc. 755-1401

PLAN - LINE 1
Scale: Horiz. 1"=40'



PROFILE - LINE 1
Scale: Horiz. 1"=40'
Scale: Vert. 1"=5'

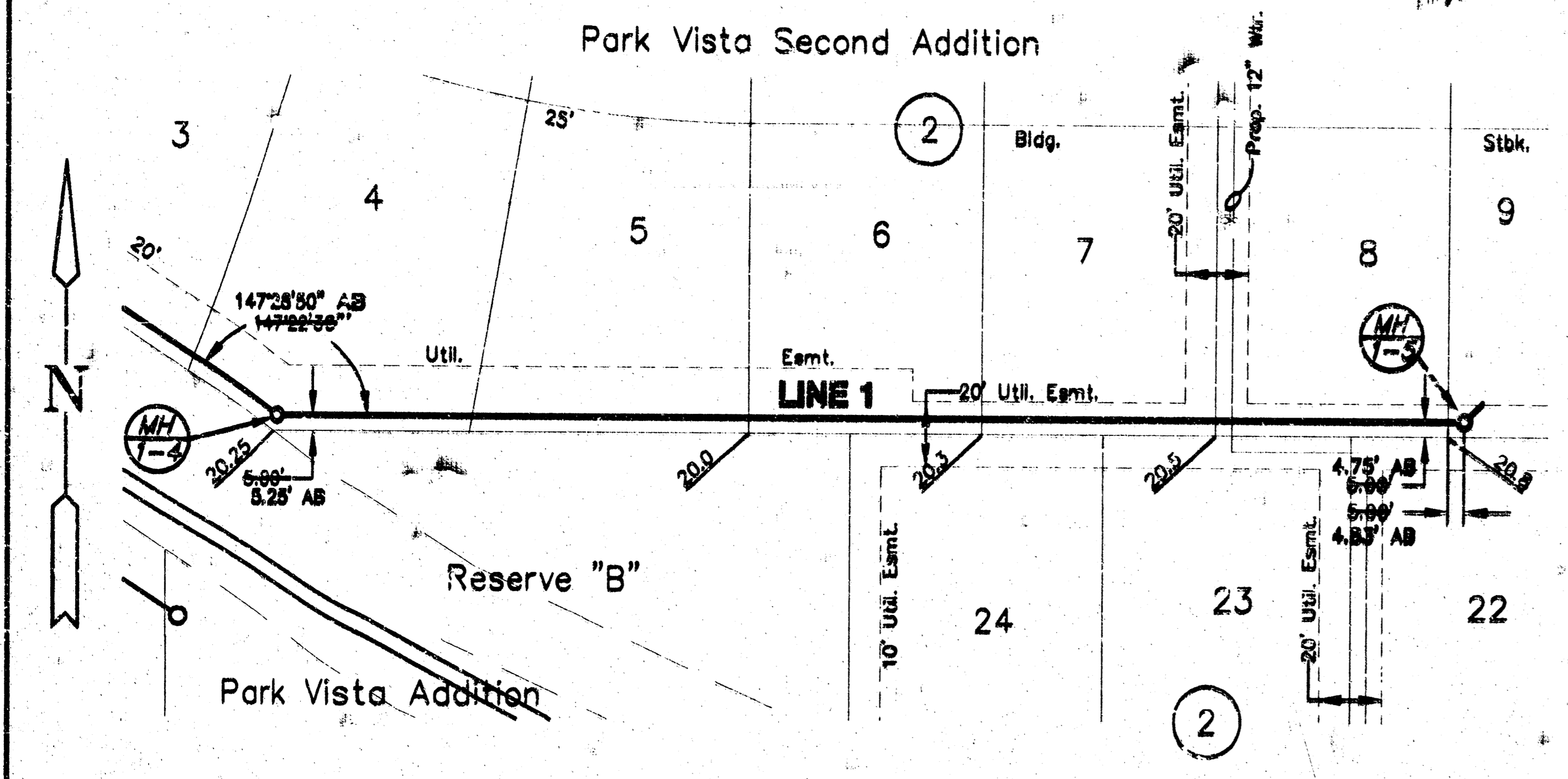
AS BUILT: 2/10/99

**PARK VISTA SECOND ADDITION
SANITARY SEWER PLANS
LINES 1, 4 & 5**

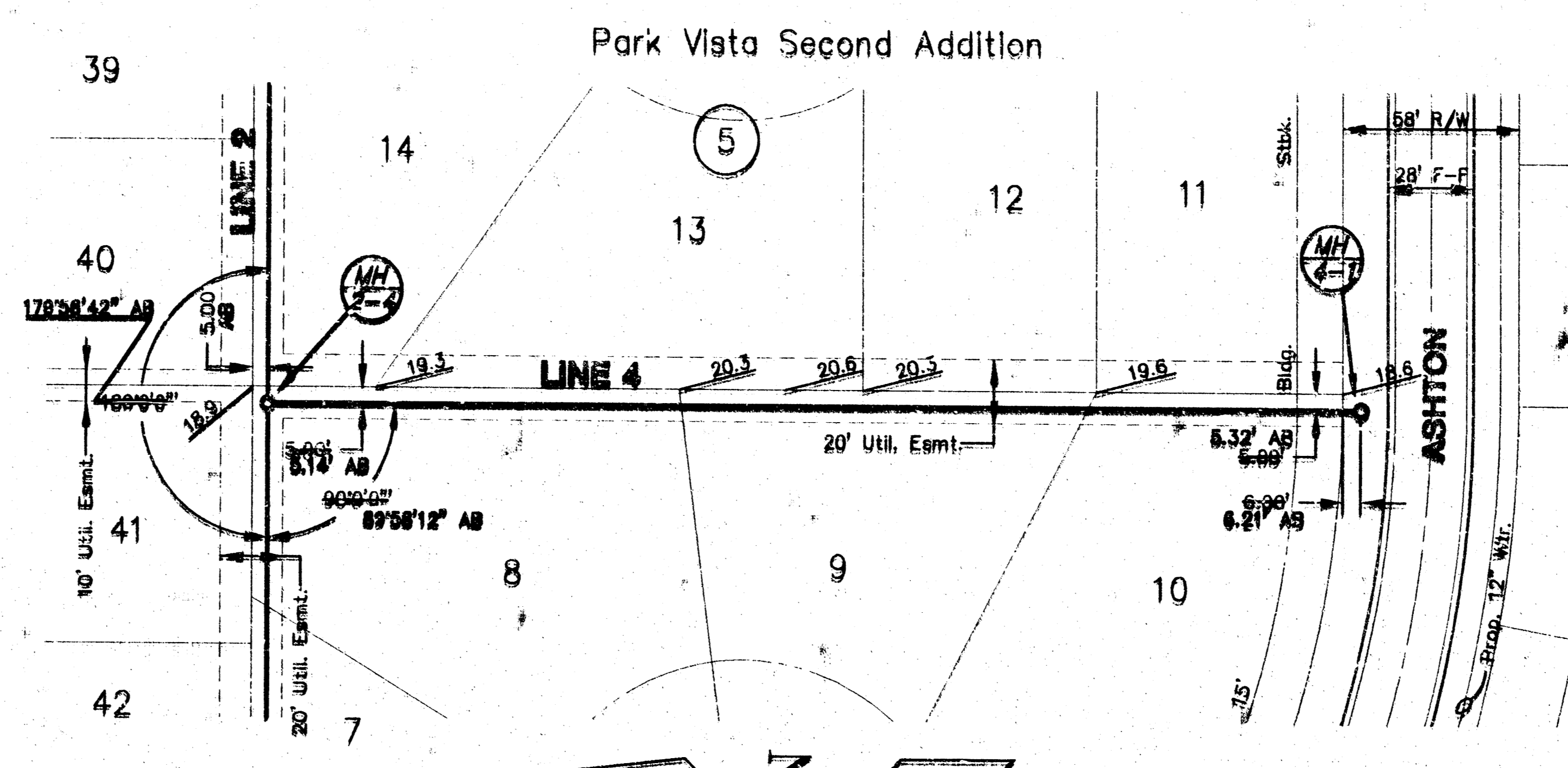
Easement grading required between
MH 1-4 & MH 1-5
(See detail on sht 3 of 8)
Note - Maintain drainage off of
lots 22-24, block 2

Easement grading required between
MH 2-4 & MH 4-1
(See detail on sht 3 of 8)

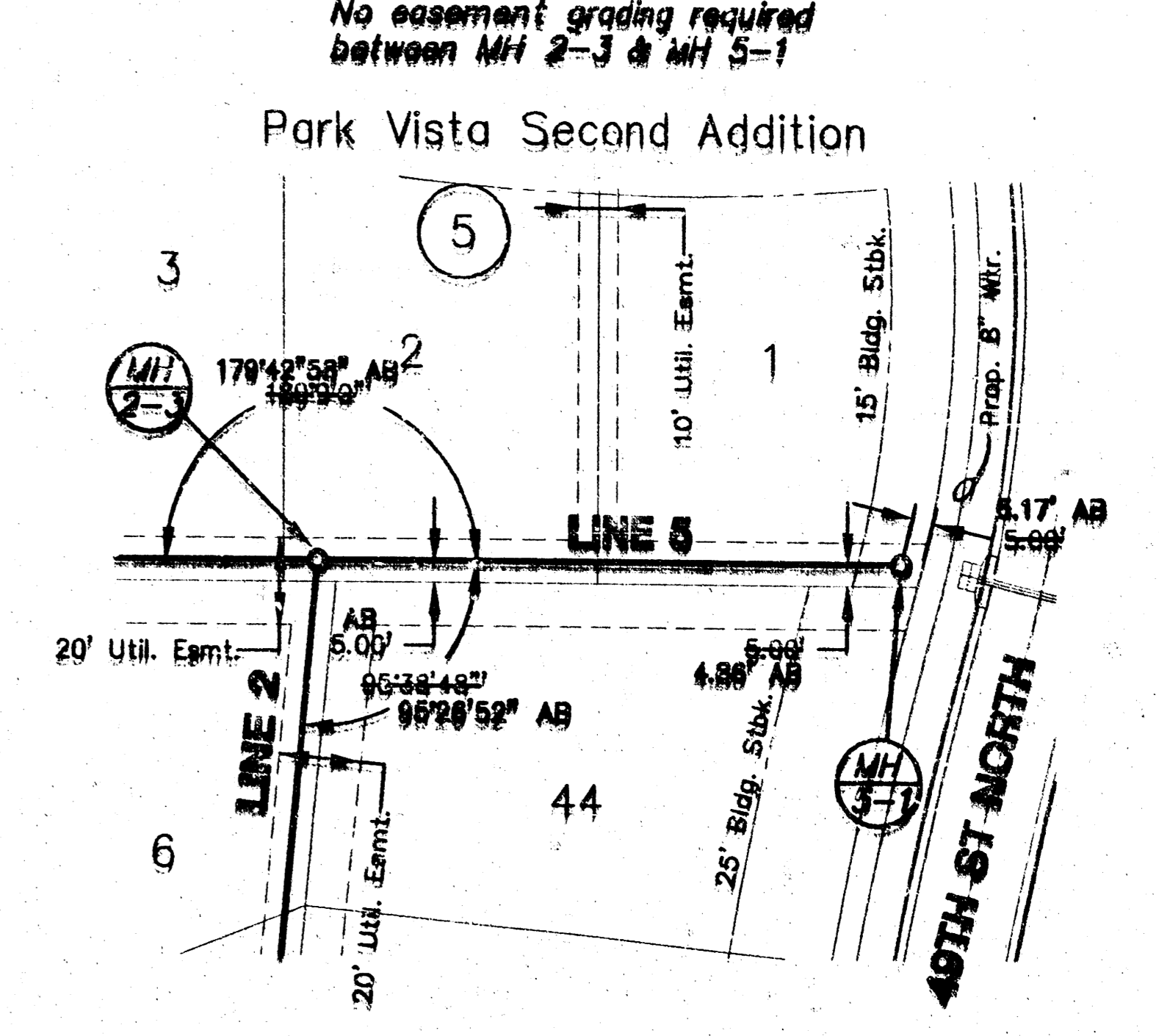
No easement grading required
between MH 2-3 & MH 5-1



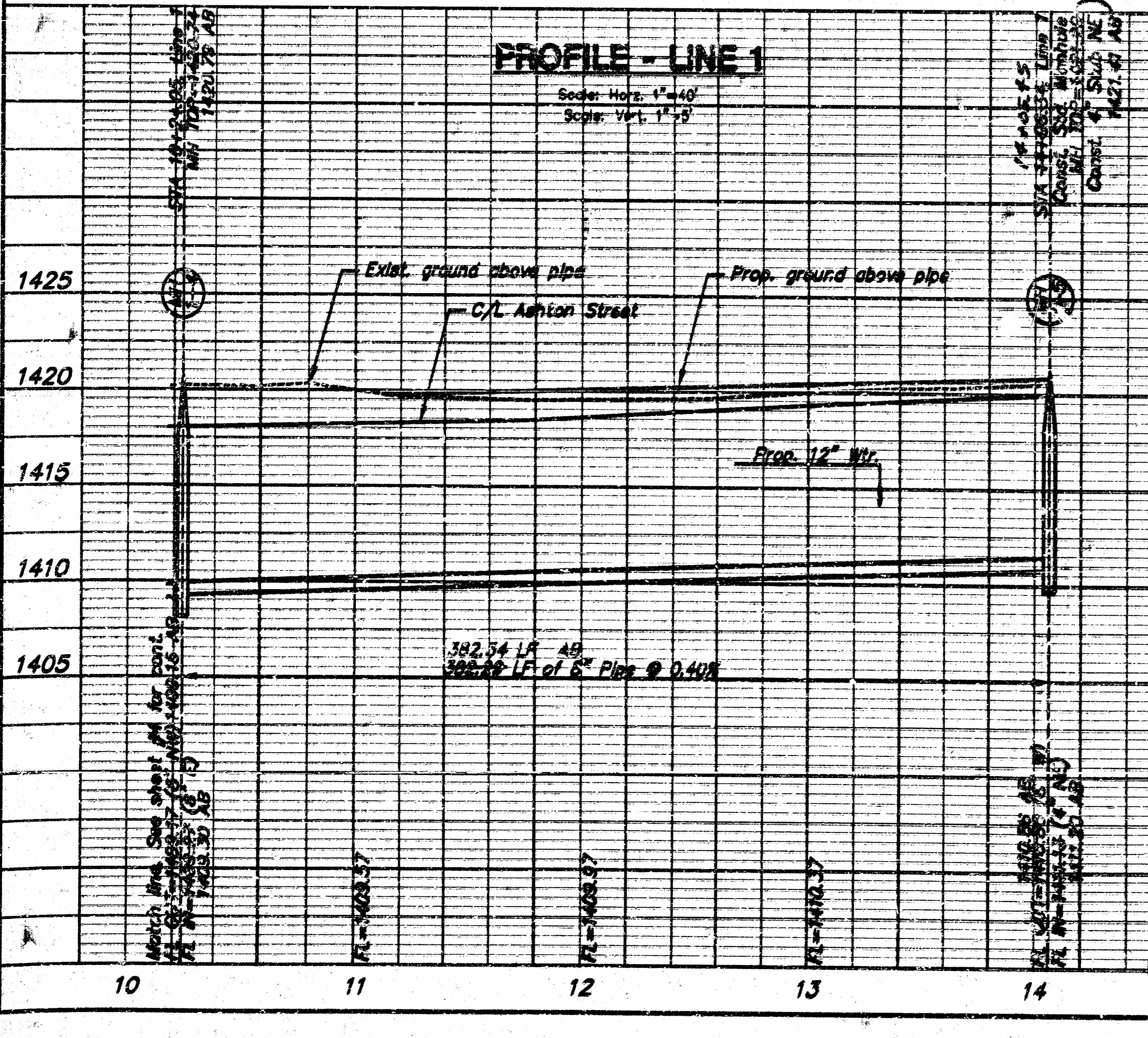
PLAN - LINE 1
Scale: Horz. 1"=40'



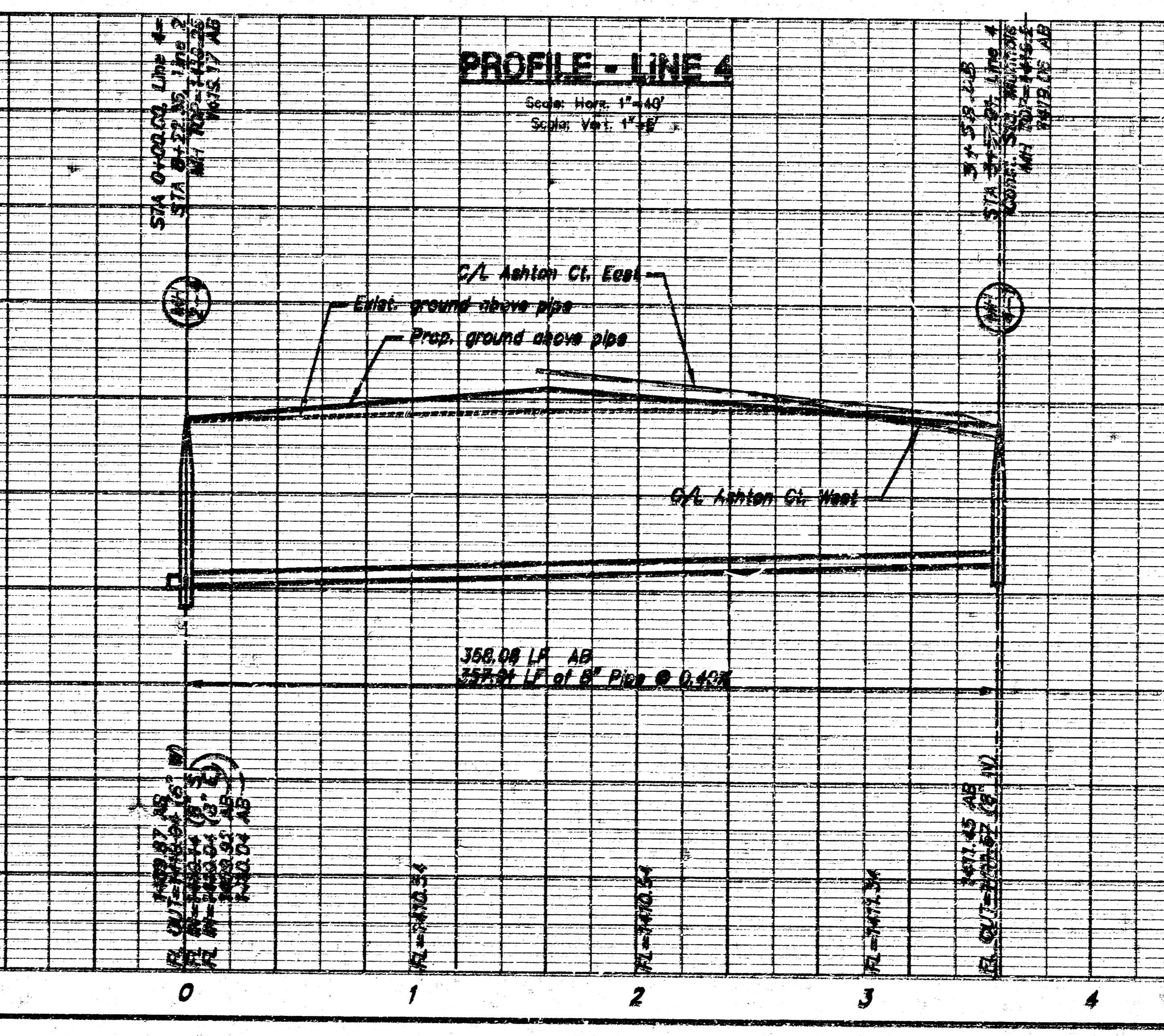
PLAN - LINE 4
Scale: Horz. 1"=40'



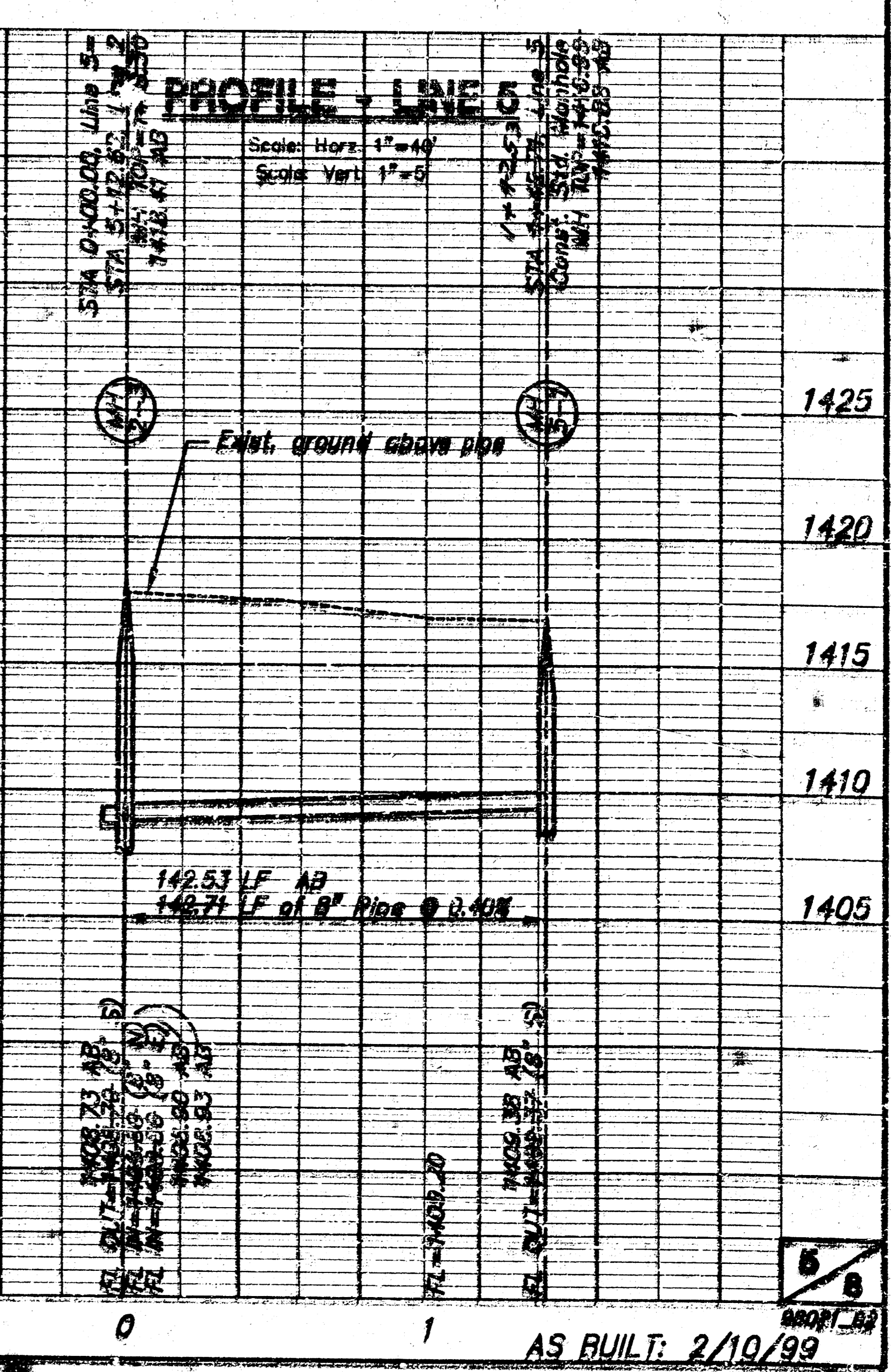
PLAN - LINE 5
Scale: Horz. 1"=40'



PROFILE - LINE 1
Scale: Horz. 1"=40'
Scale: Vert. 1"=5'



PROFILE - LINE 4
Scale: Horz. 1"=40'
Scale: Vert. 1"=5'

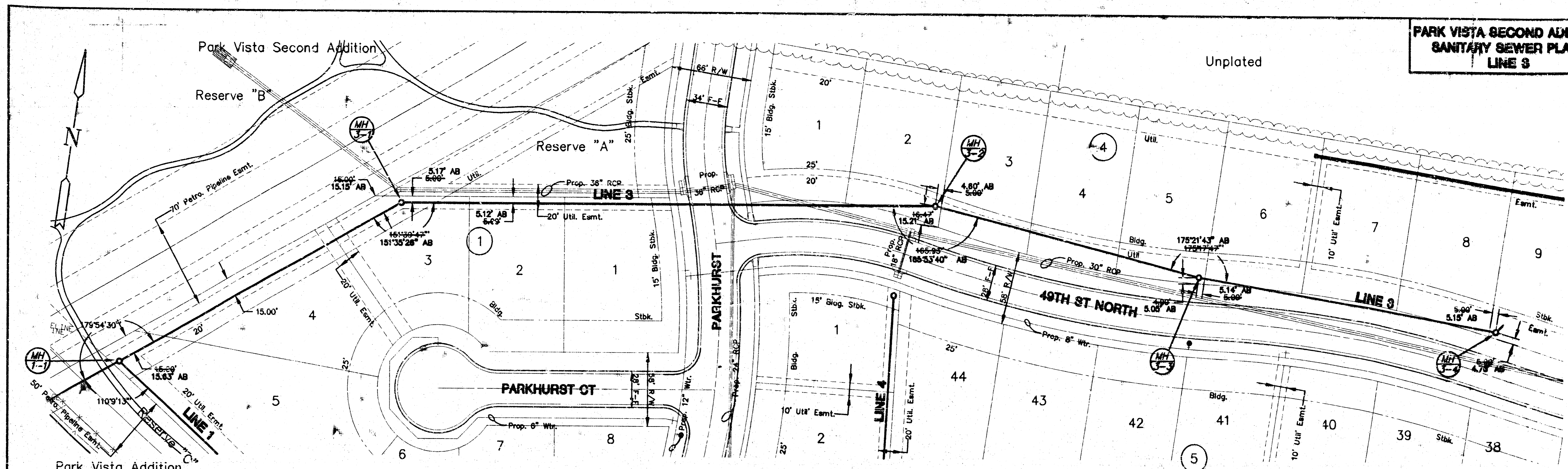


PROFILE - LINE 5
Scale: Horz. 1"=40'
Scale: Vert. 1"=5'

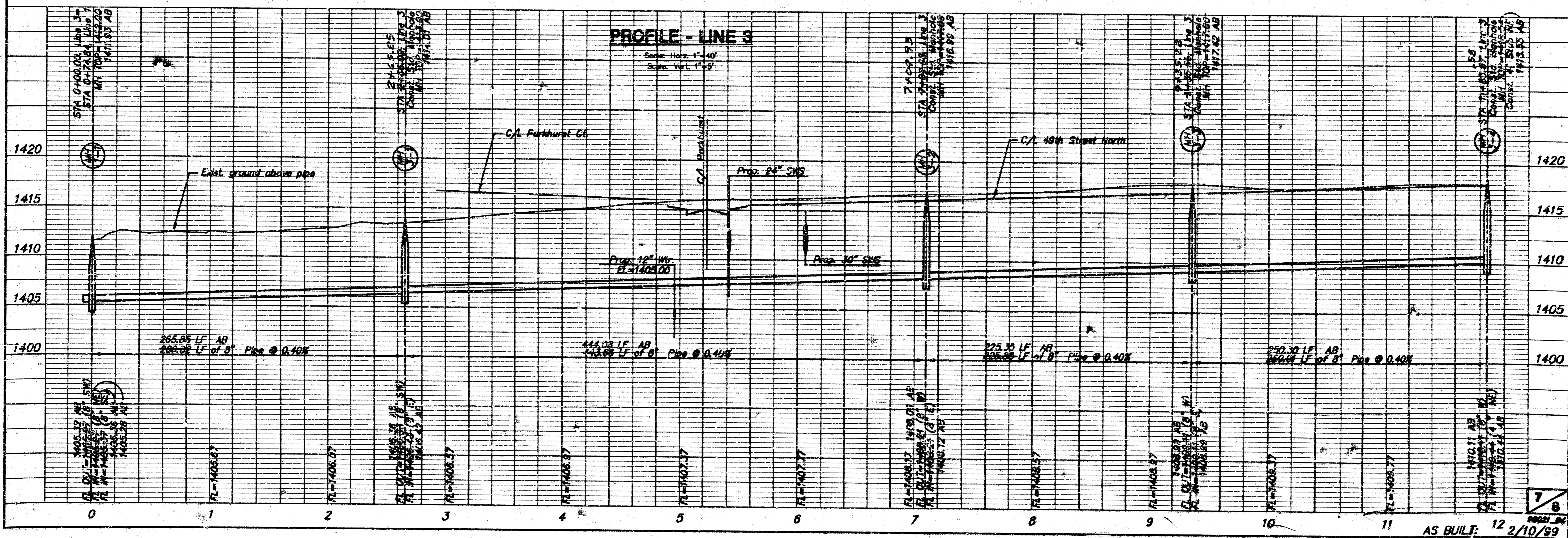
AS BUILT: 2/10/99

DATE: 07/13/98 11:53:59 AM

**PARK VISTA SECOND ADDITION
SANITARY SEWER PLANS
LINE 3**



PLAN - LINE 3
Scale: Horz. 1"=40'



AS BUILT: 12/10/99

I:\BLANKS\9113\SANPLAN\1999\1999_04_06_11.dwg 11/10/10 10:10:39

