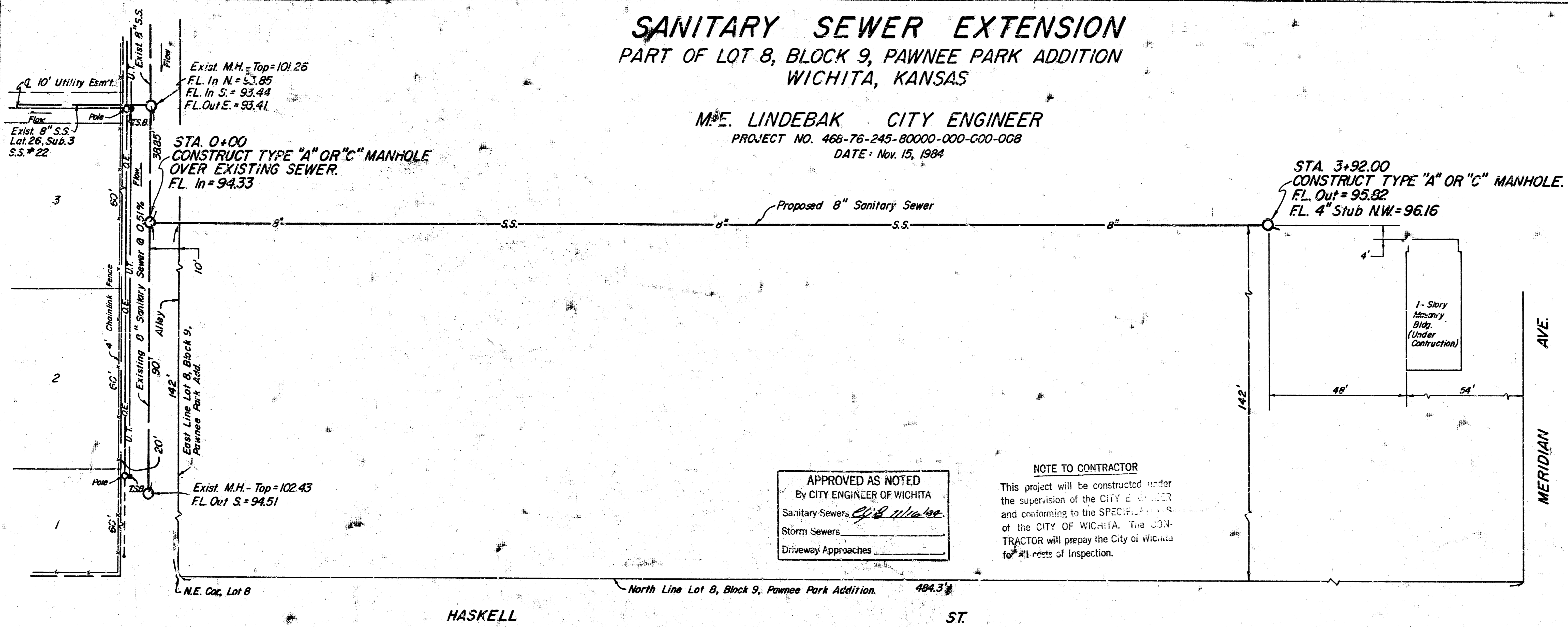


# SANITARY SEWER EXTENSION

PART OF LOT 8, BLOCK 9, PAWNEE PARK ADDITION  
WICHITA, KANSAS

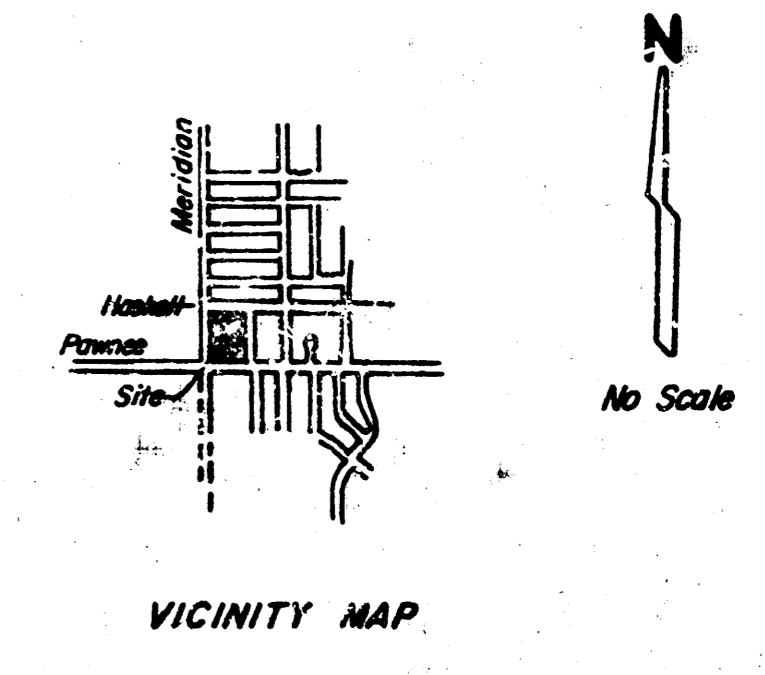
M.E. LINDEBAK CITY ENGINEER  
PROJECT NO. 468-76-245-80000-000-000-008  
DATE: Nov. 15, 1984



Legend:  
O.E. = Overhead Electric  
U.T. = Underground Telephone  
T.S.B. = Telephone Splice Box

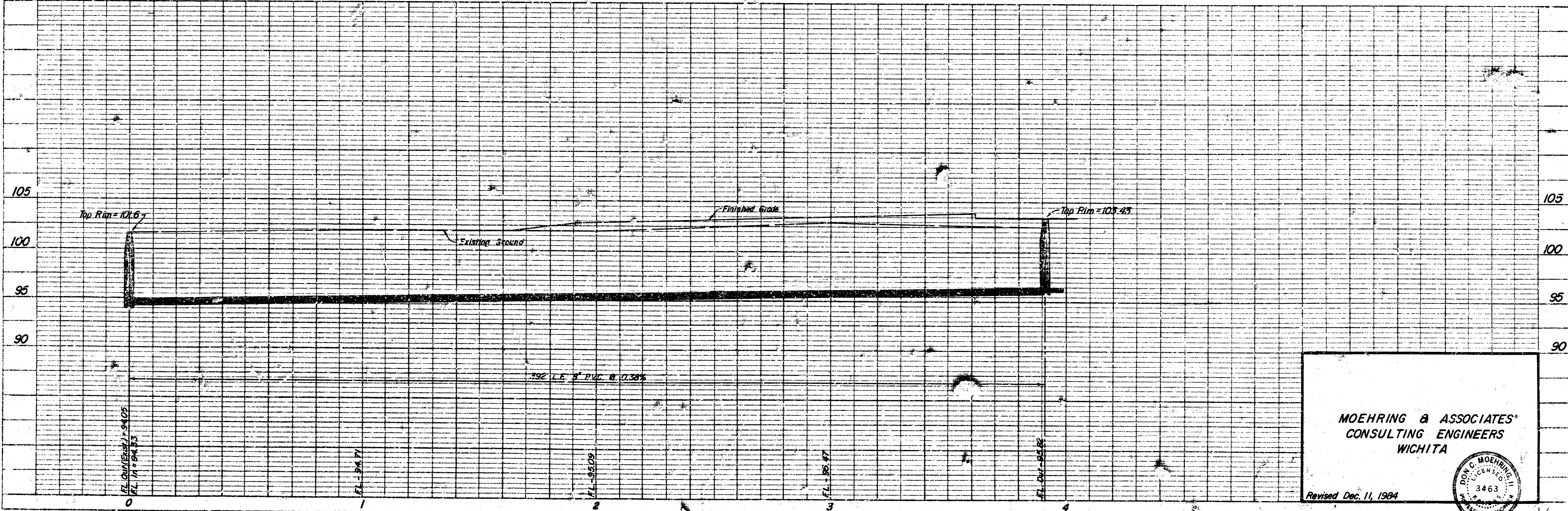
Scale:  
1" = 20' - Horiz.  
1" = 5' - Vert.

BENCHMARK -  
S.W. Cor. Conc. Porch @  
2434 N. Haskell.  
Elev. 104.65 City Datum.



APPROVED AS NOTED  
By CITY ENGINEER OF WICHITA  
Sanitary Sewers  
Storm Sewers  
Driveway Approaches

NOTE TO CONTRACTOR  
This project will be constructed under the supervision of the CITY ENGINEER and conforming to the SPECIFICATIONS of the CITY OF WICHITA. The CONTRACTOR will prepay the City of Wichita for all tests of inspection.



MOEHRING & ASSOCIATES  
CONSULTING ENGINEERS  
WICHITA

Revised Dec. 11, 1984

