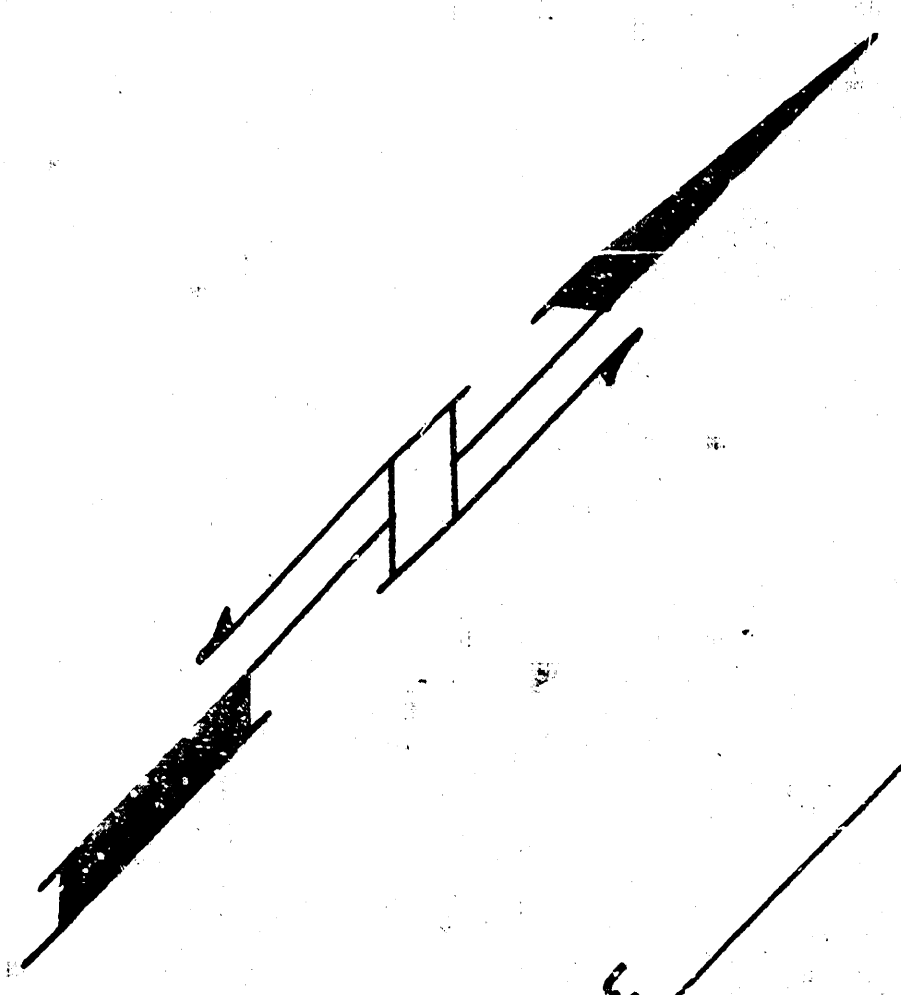
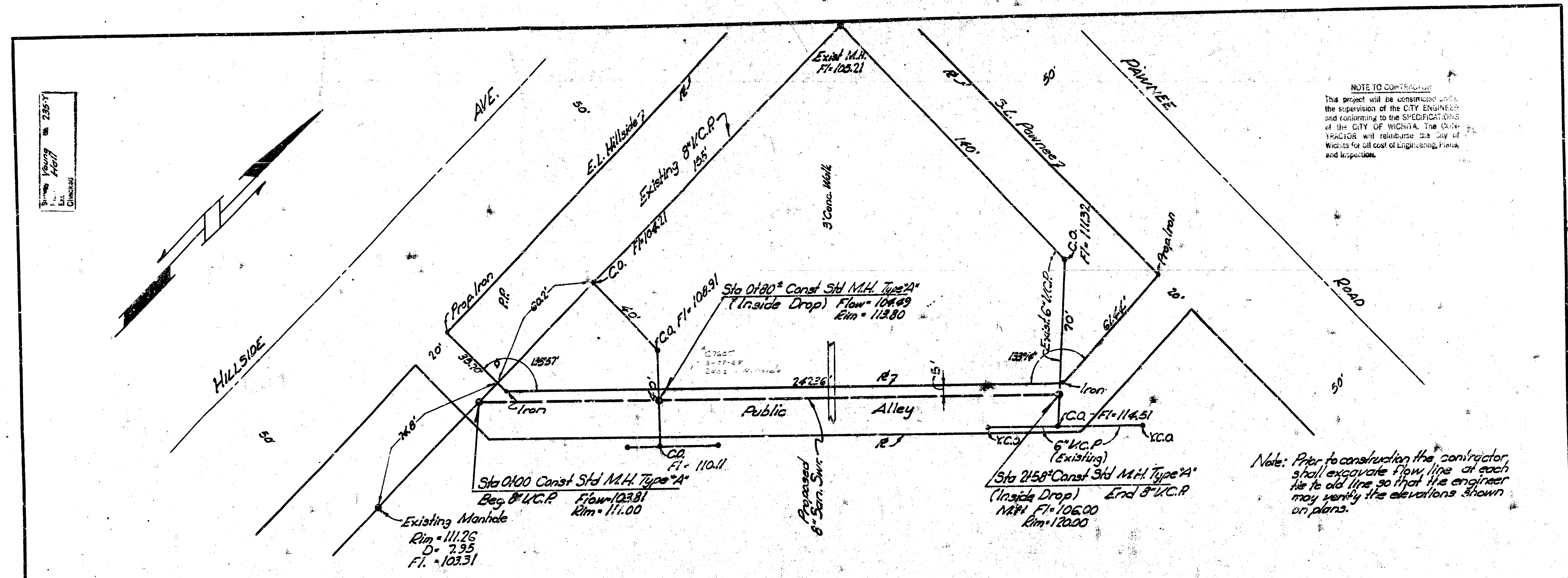


Young  
Hall  
Chicago



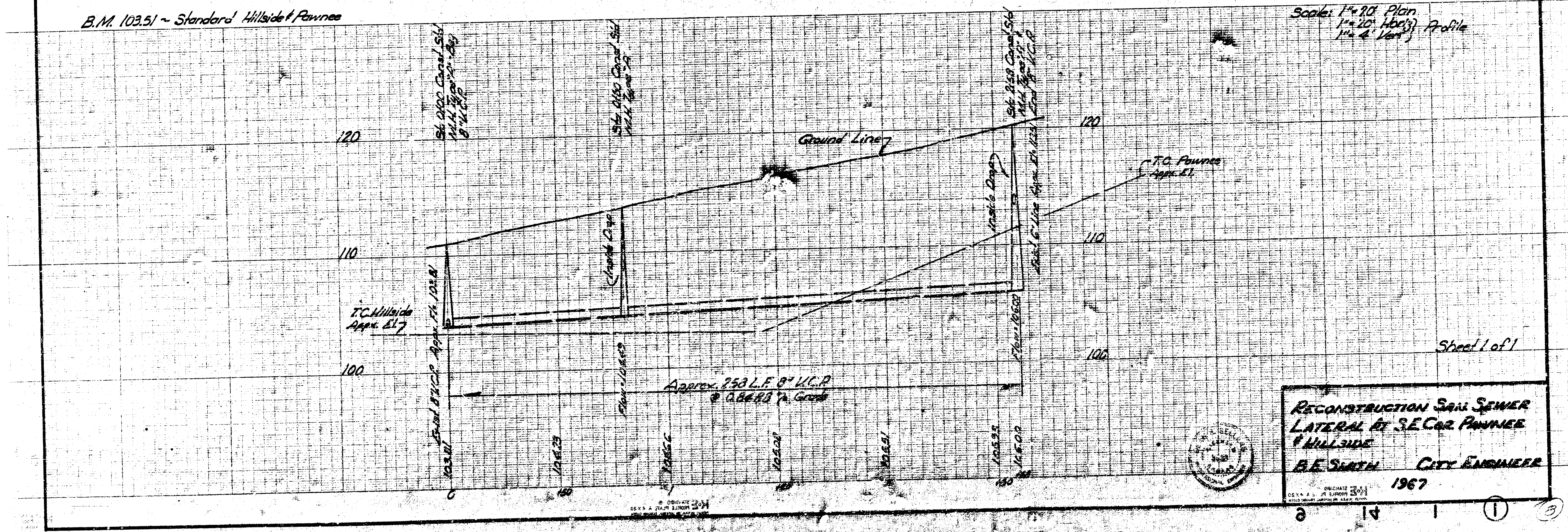
**NOTE TO CONTRACTOR**  
This project will be constructed under the supervision of the CITY ENGINEER and conforming to the SPECIFICATIONS of the CITY OF WICHITA. The CONTRACTOR will reimburse the City of Wichita for all cost of Engineering, Plans, and Inspection.



Note: Prior to construction the contractor shall excavate flow line at each tie to old line so that the engineer may verify the elevations shown on plans.

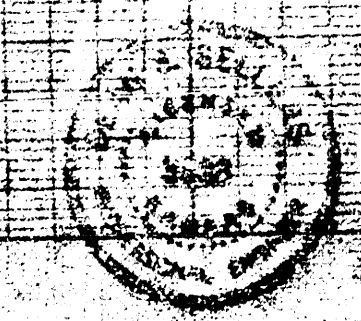
B.M. 103.51 ~ Standard Hillside Pawnee

Scale: 1" = 20' Plan  
1" = 20' (vert) Profile  
1" = 4' Vert



Sheet 1 of 1

**RECONSTRUCTION SEWER LATERAL AT S.E. COR PAWNEE HILLSIDE**  
B.E. SMITH CITY ENGINEER  
1967



2 14 1 ① ③