

CONSTRUCTION PLANS FOR SANITARY SEWER SYSTEM EXTENSIONS

PEPPERMINT PARK ADDITION

TO

CITY OF WICHITA, KANSAS

MICHAEL E. LINDBLAK, P.E. - CITY ENGINEER

PROJECT NO. 607861

INDEX CODE 607861

GENERAL NOTES:

1. Existing utility lines and their location, as shown on the plans, represent the best information obtainable for design. The contractor will be required to work around existing utilities within the right-of-way which do not conflict with proposed construction.

2. Rubble from the removal of miscellaneous structures and excess excavation which is to be wasted shall be disposed of on sites to be provided by the Contractor. These sites shall be approved by the Engineer as to suitability, appearance and site location. Locations that, in the opinion of the Engineer, will leave an unsightly appearance will not be approved.

All disposal sites must be approved by the Kansas Department of Health and Environment. Material either stockpiled or disposed of in a flood plain would require a Kansas State Board of Agriculture permit. Any material dumped in waters of the United States or wetlands is subject to U.S. Corps of Engineers permitting regulations. Any material buried or stockpiled beyond approved construction limits would require additional archaeological investigations unless buried in a previously approved borrow location.

3. The Contractor shall be responsible for maintaining continuous flow of sewage through construction. Contractor's proposed method for maintaining sewage flow shall be approved by the Engineer. Cost of maintaining flow of sewage through construction will not be paid for directly and this cost shall be considered as subsidiary to the other pay items of the work.

4. The Contractor shall be responsible for preserving property irons. The Contractor will be required to re-establish any property irons which are damaged or destroyed by his construction operations. Such irons shall be re-established by a licensed land surveyor or a licensed professional engineer in accordance with state laws.

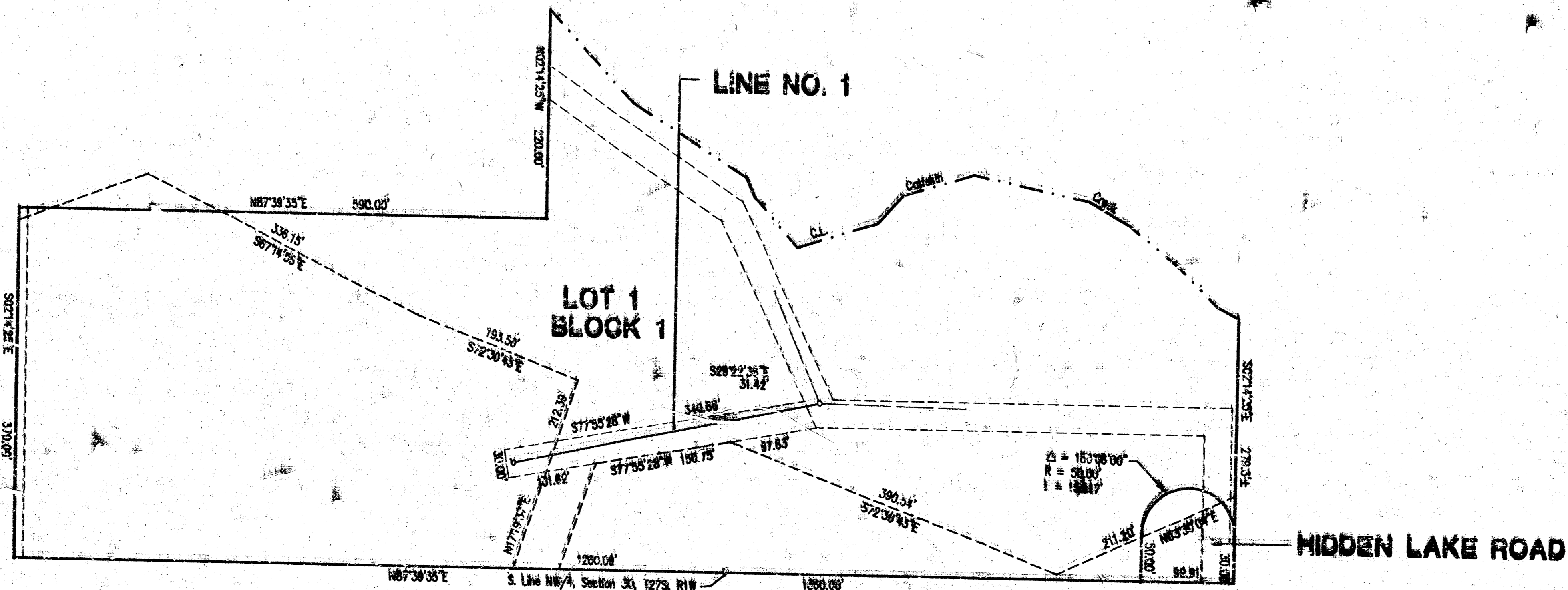
5. Trees and shrubs in public right-of-way which are in direct conflict with proposed new construction shall be removed by the Contractor with the Engineer's approval and shall be subsidiary to the Project costs. Trees and shrubs which are not in direct conflict with the proposed new construction shall be saved and protected from damage.

6. Contractor shall vacuum test all manholes according to the City of Wichita standard specifications.

7. The tops of all manholes shall be set 0.4 feet above existing ground unless otherwise noted.

8. The contractor shall not start work on the project until the project inspector is assigned to the project and is present on the site. Any work done without inspection will be required to be uncovered for inspection.

9. At least 48 hours prior to beginning any excavation (excluding weekends and holidays), the contractor shall contact the Kansas One-Call System, a utility location service, at (316)687-2470 to request the following utility companies to locate any existing lines within the project area: KPL/Gas Service, K.G. & E. and Southwestern Bell. The contractor must also notify Southwestern Bell at (316)571-2115 at least 48 hours prior to beginning Excavation and request that any existing lines within the project work area be flagged.



INDEX

TITLE SHEET	SHEET 1
PLAN & PROFILE	SHEET 2
TYPE "P" MANHOLE	SHEET 3
TYPE "C" MANHOLE	SHEET 4
PEPPERMINT PARK PLAT	SHEET 5

BENCH MARKS

(U.S.G.S. Datum)
 1. 119th St. West & 1/2 Mile South of Maple
 City of Wichita Bench Mark Disc, 39' East
 of Centerline on 1/2 Section Line and 3'
 South of Fence Corner.
 Elev. 1317.76 M.S.L.
 Elev. 130.36 City Datum

*Referenced To The National Geodetic Vertical Datum of 1929.

Scale: 1"=150'

MAY 1996

PLANS PREPARED

BY

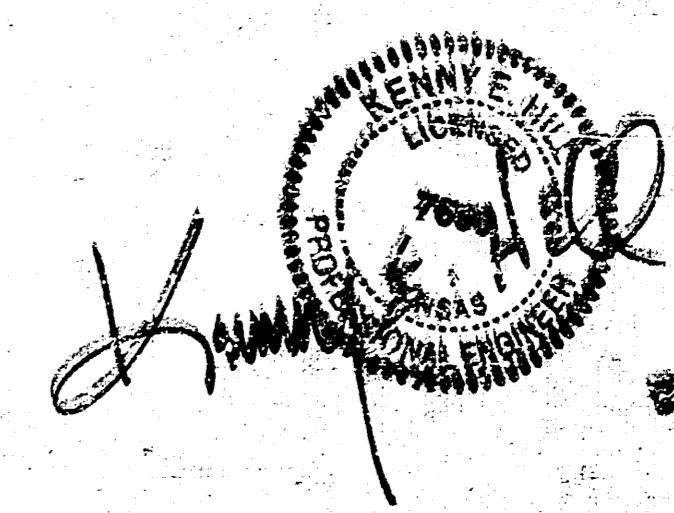
POE & ASSOCIATES OF KANSAS, INC.

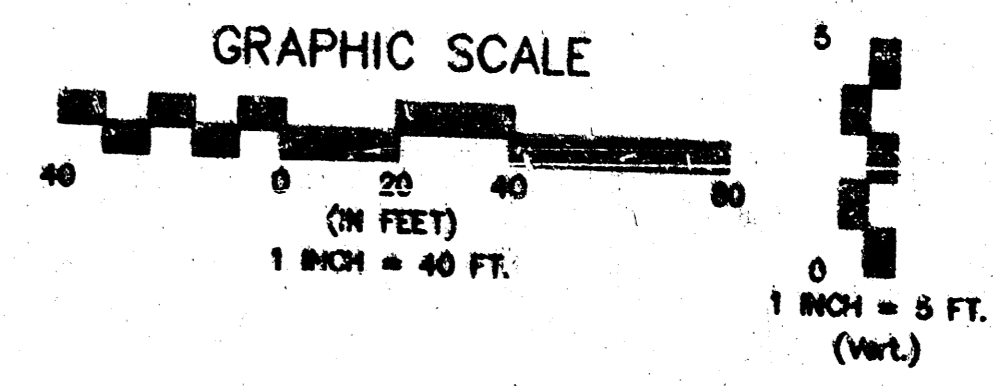
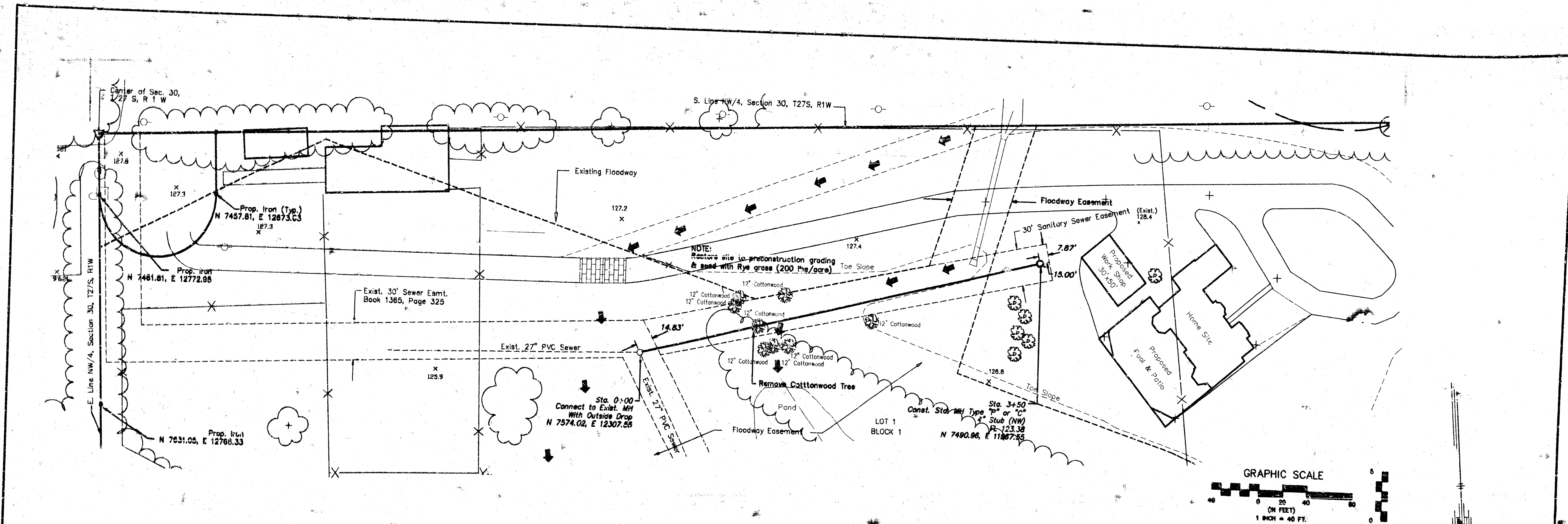
2201 N. LINCOLN ST. WICHITA, KS 67202

316-262-1110 FAX 316-262-1111

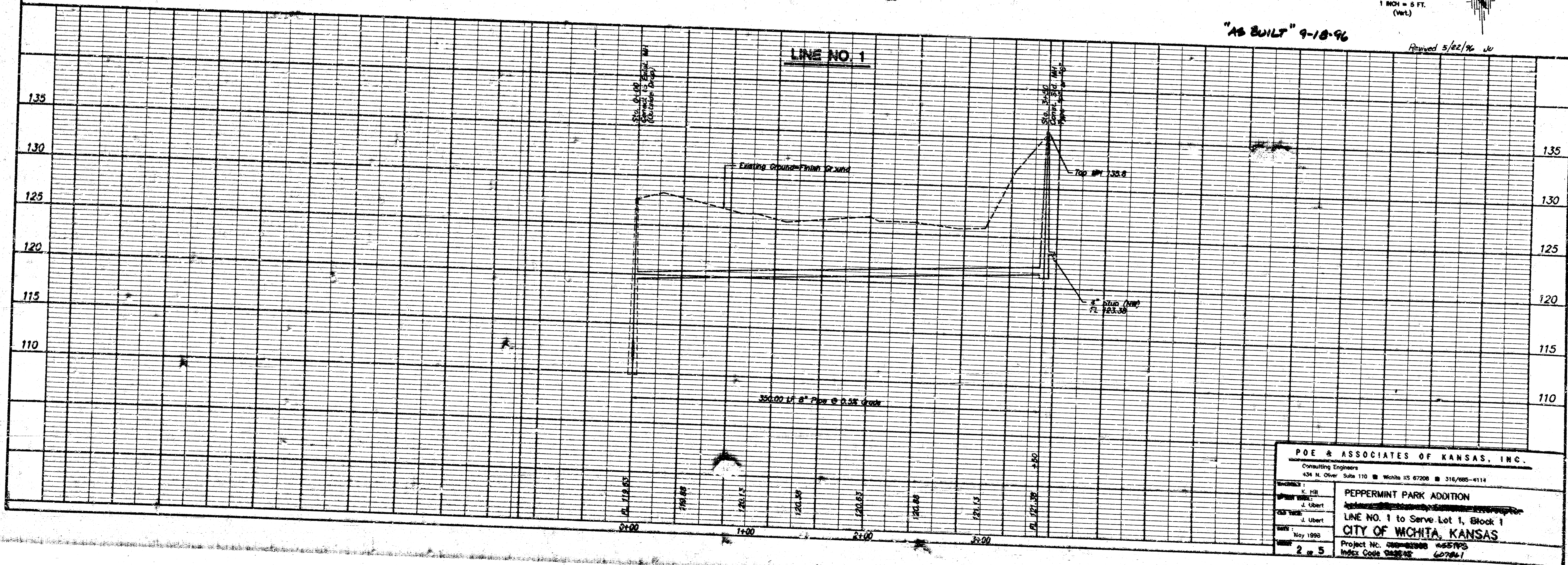
Booked
 10/10/96
 ROC
 N=225

"AS BUILT"
 9-18-96





"AS BUILT" 9-18-96
 Revised 5/22/96 WJ



POE & ASSOCIATES OF KANSAS, INC. Consulting Engineers 434 N. Oliver, Suite 110 • Wichita, KS 67208 • 316/685-6114	
CHECKED: K. Hill DESIGNED: J. Ubert DATE: May 1998	PEPPERMINT PARK ADDITION LINE NO. 1 to Serve Lot 1, Block 1 CITY OF WICHITA, KANSAS Project No. 980-03988 4557PS Index Code 98038 607841
SHEET: 2 of 5	DATE: 5/22/96

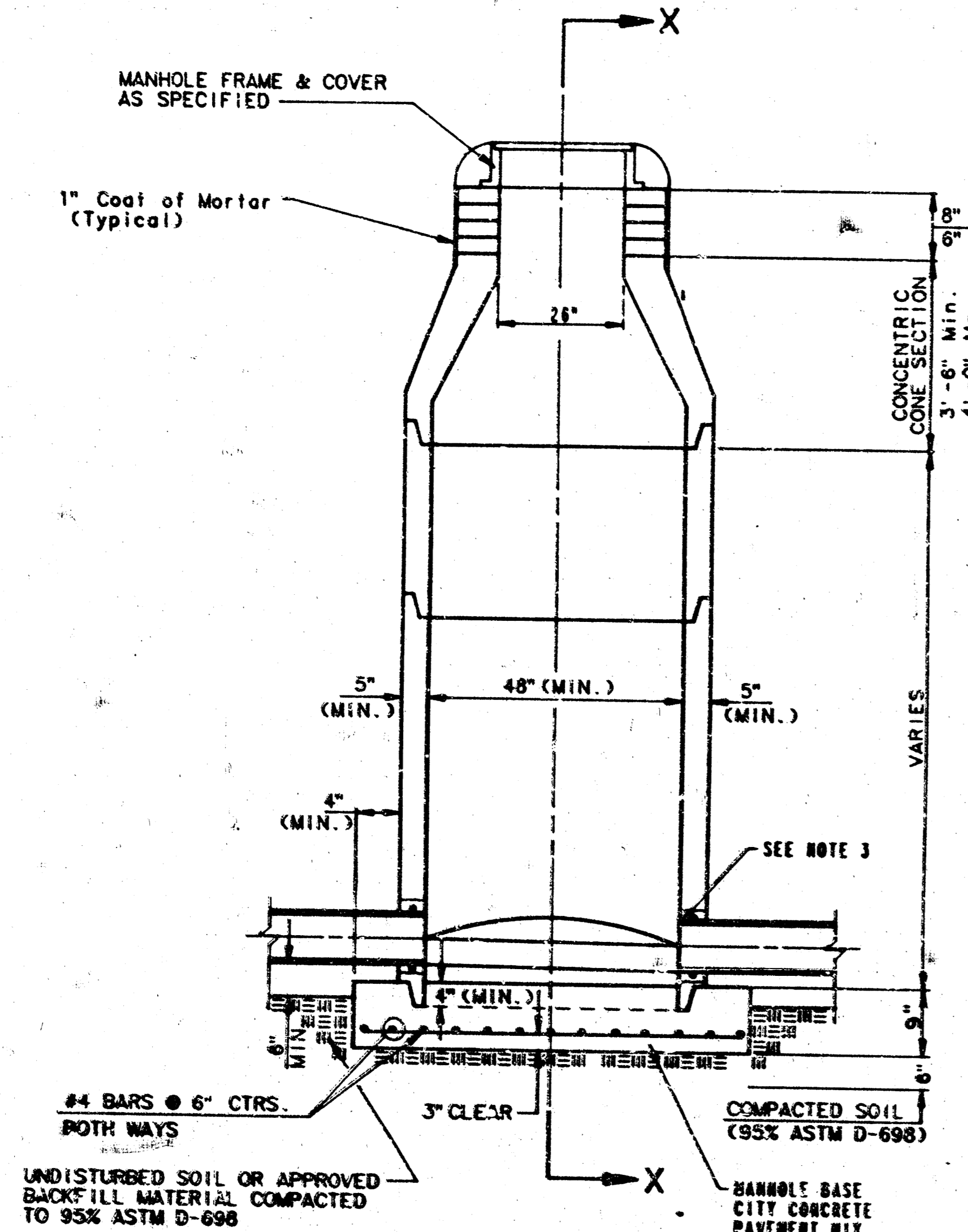
X:\PROJECTS\1998\03988\03988.dwg Plot Date: 5/22/98 10:51 AM Plot Scale: 1" = 40'

SEWER APPURTENANCES DETAILS

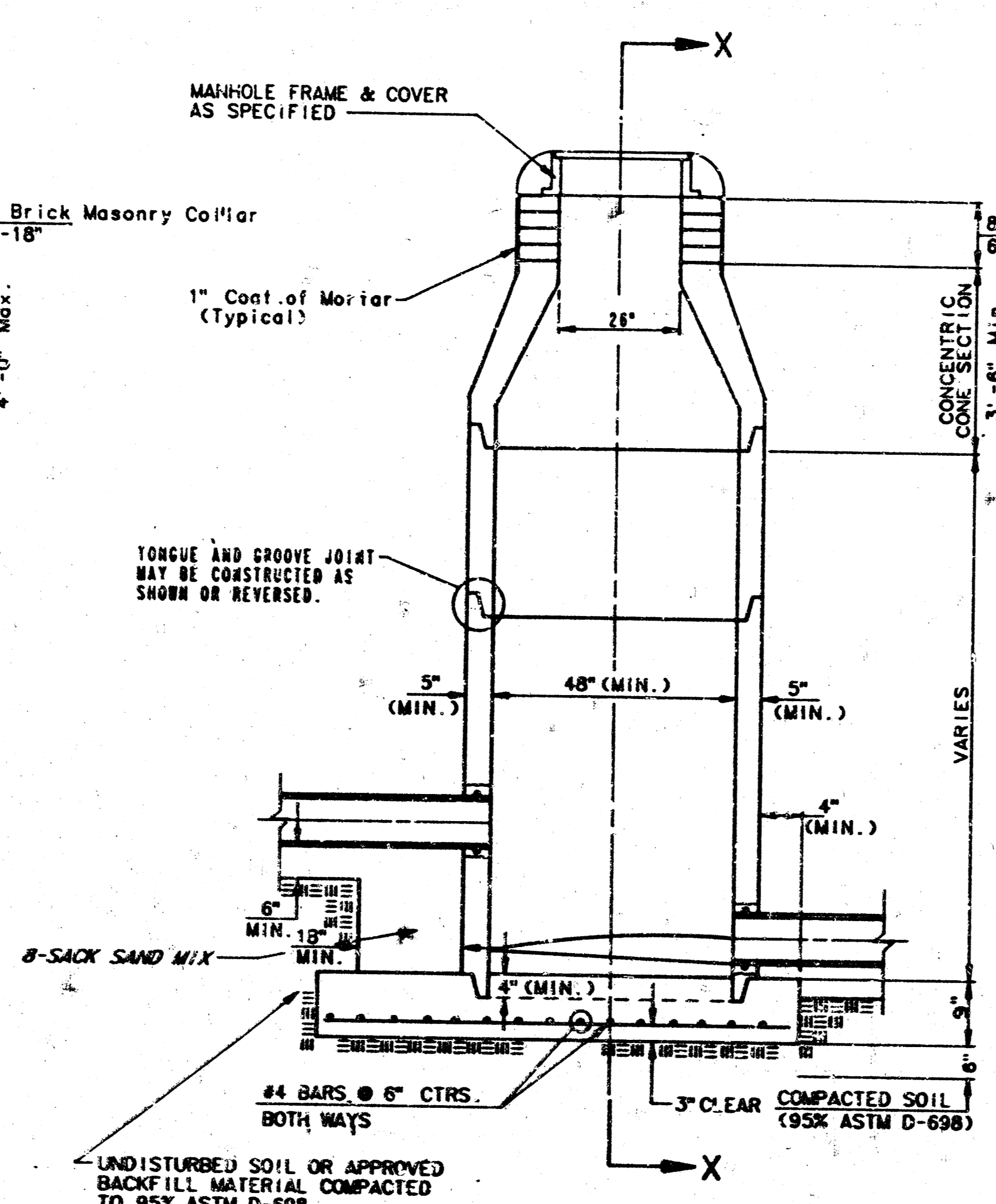
ADOPTED AS STANDARD DESIGN

BY

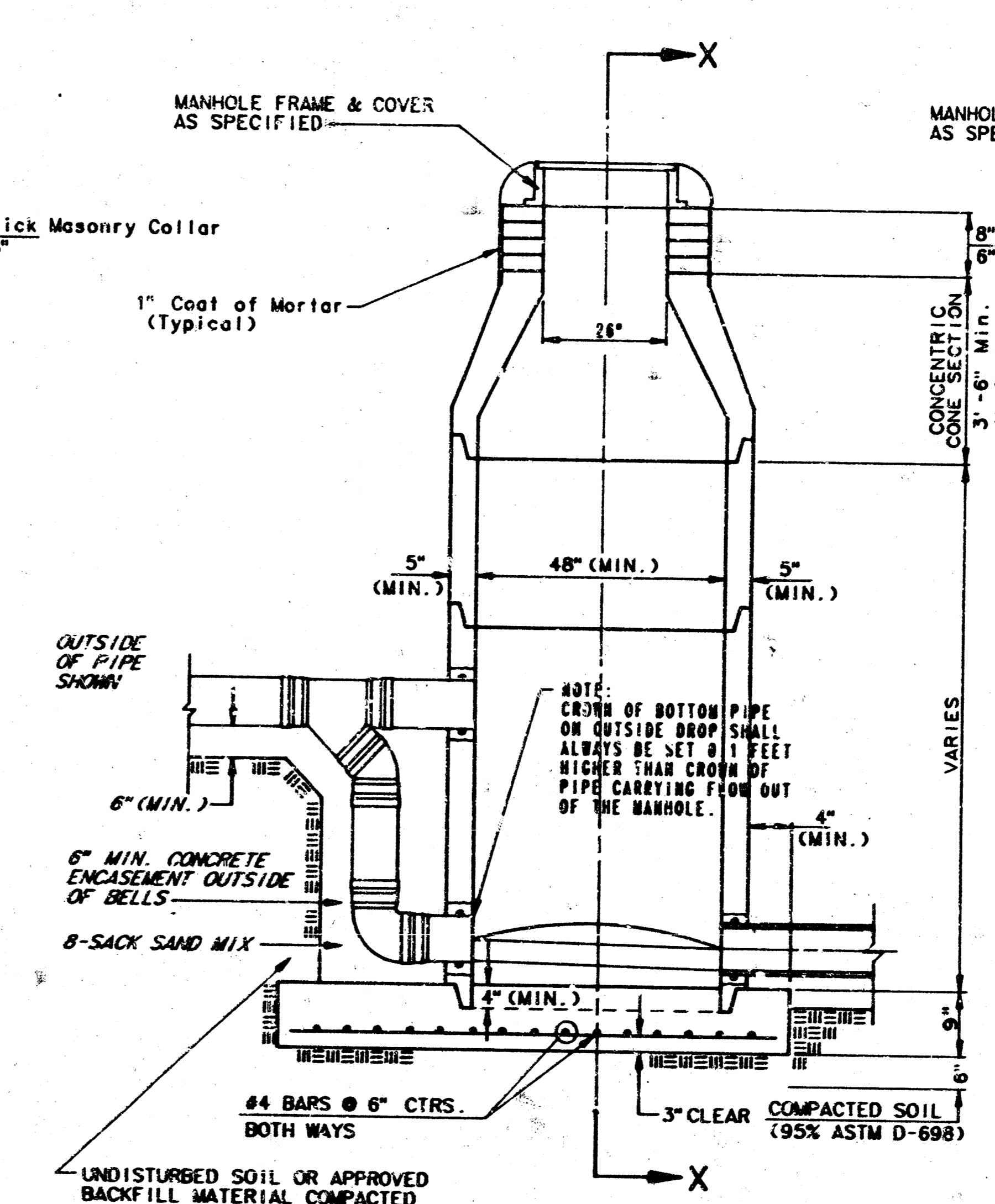
CITY OF WICHITA



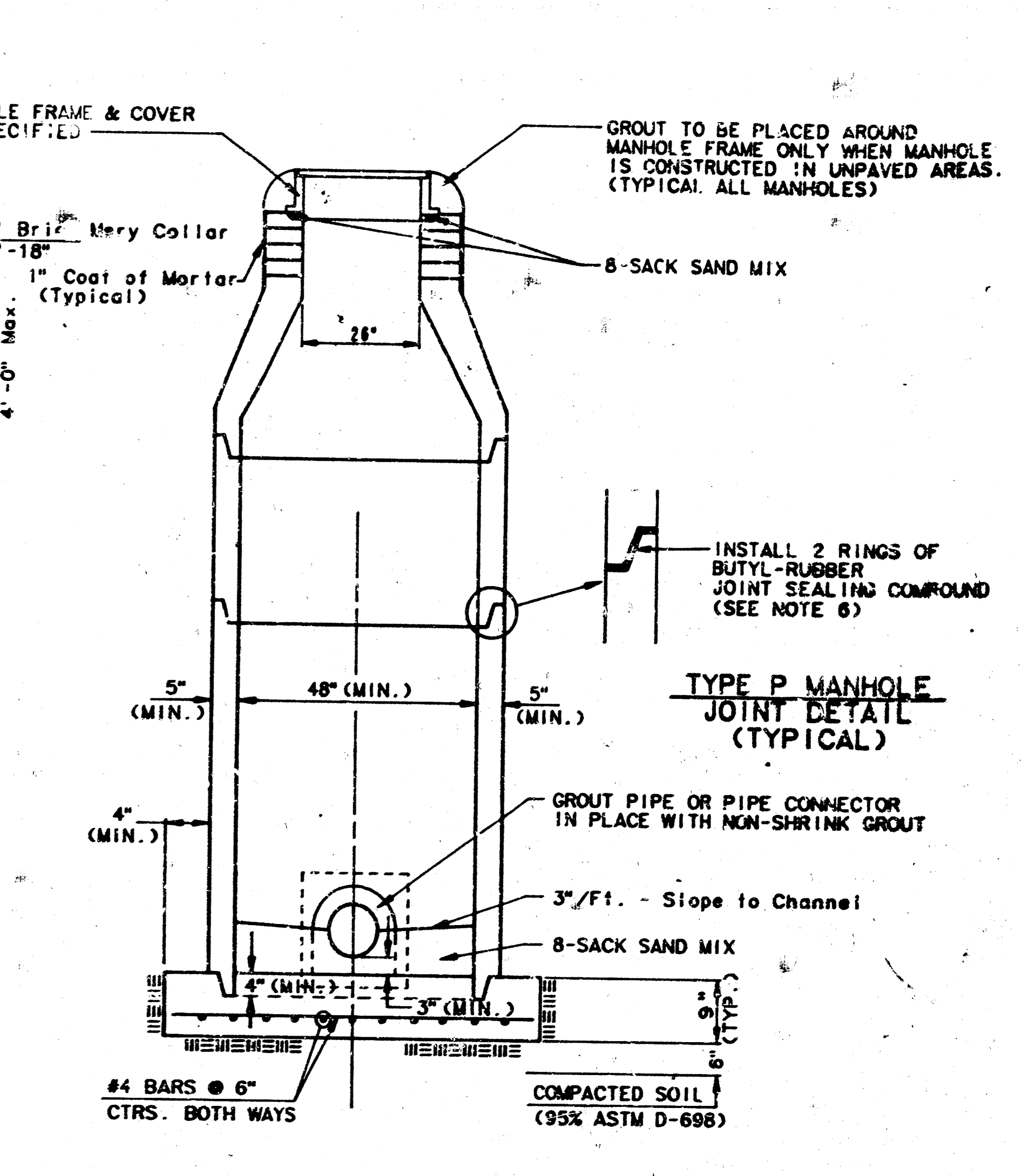
**TYPE P
STANDARD MANHOLE**



**TYPE P
INSIDE DROP MANHOLE**



**TYPE P
OUTSIDE DROP MANHOLE**



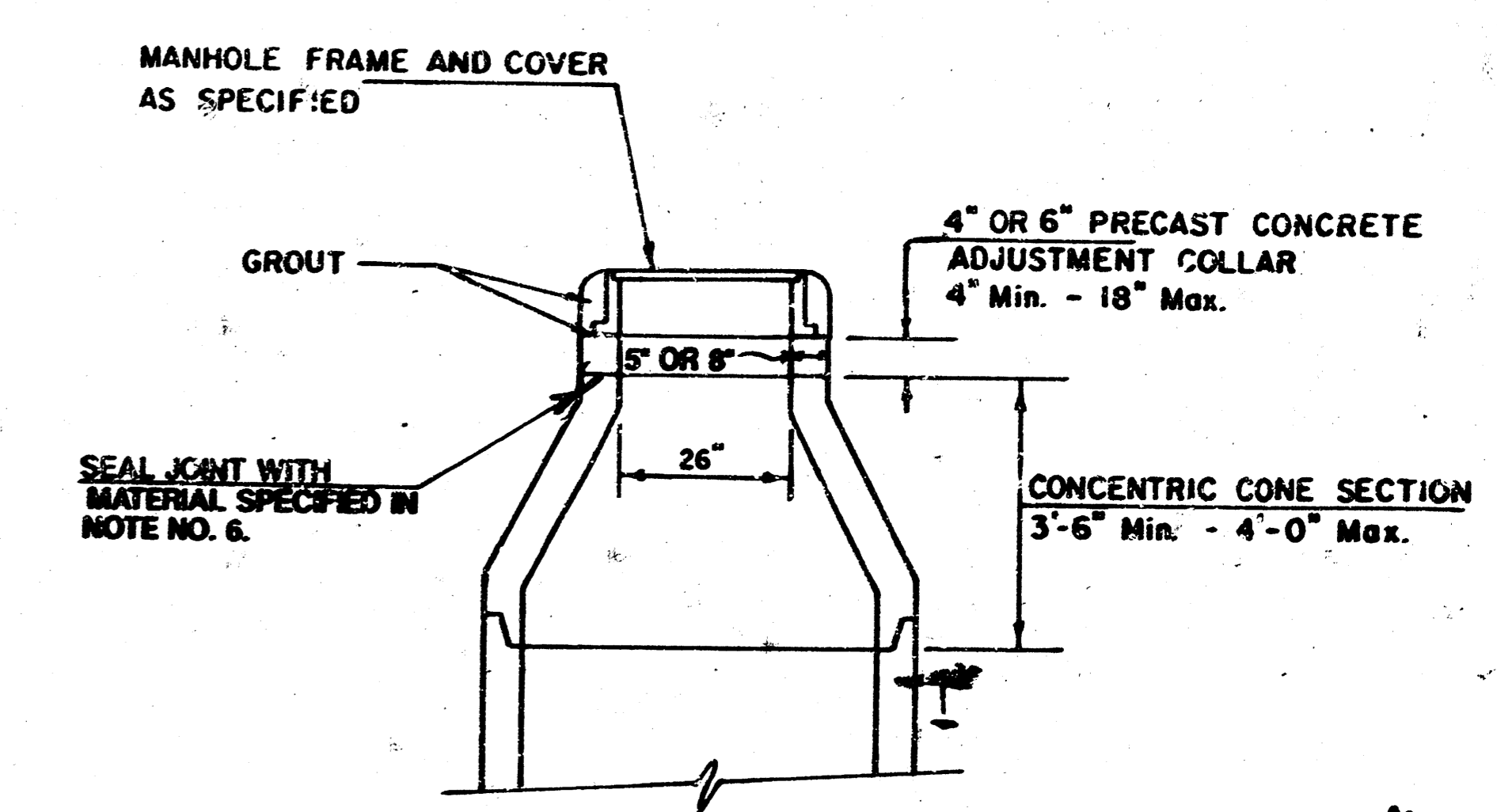
**SECTION X
(TYPICAL)**

GENERAL NOTES

- PRECAST MANHOLE NOTES**
1. ALL PRECAST CONCRETE MANHOLE SECTIONS SHALL CONFORM TO THE LATEST REVISION OF A.S.T.M. C470 AS MODIFIED BY THE SPECIFICATIONS.
 2. NON-SHRINK GROUT SHALL BE NON-METALLIC TYPE.
 3. APPROVED FLEXIBLE WATERSTOP CASSETS SHALL BE INSTALLED TO JOIN THE SEWER TO THE MANHOLE WALL WHEN A.B.S. COMPOSITE PIPE OR P.V.C. PIPE IS USED. FOR OTHER TYPES OF PIPE THE SEWER SHALL BE GROUTED IN PLACE WITH NON-SHRINK GROUT. THE SEWER PIPE SHALL BE SUPPORTED WITH CONCRETE ENCASEMENT A MINIMUM OF 3 FEET FROM THE MANHOLE WALL AND TO THE FIRST JOINT FOR P.V.C. SUCH THAT THE JOINT REMAINS FLEXIBLE.
 4. ALL INSIDE SURFACES OF THE CONCRETE MANHOLE WHICH WOULD BE EXPOSED TO SEWER GAS SHALL BE COATED WITH 2 COATS TREMCO SERIES 66 91-BUILD EPICOLINE, DRY THICKNESS OF 3 MILS (MIN.)
 5. EXTERIOR MANHOLE WALLS SHALL BE COATED WITH 1 COAT HOBILARNA 633 BITUMINUS COATING.
 6. JOINT SEALING COMPOUND SHALL BE KENT SEAL NO. 2 OR APPROVED EQUAL.
 7. PRECAST MANHOLES SHALL BE SET AT LEAST 4 INCHES INTO THE MANHOLE BASE.
 8. TOP OF MANHOLE FLOOR SLAB SHALL BE AT LEAST 3 INCHES BELOW THE FLOW LINE OF THE OUTLET PIPE TO INSURE SUFFICIENT MINIMUM THICKNESS OF SHAPED INVERT.
 9. LIFTING HOLES SHALL BE FILLED WITH NON-SHRINK GROUT AND THE INTERIOR SURFACE COATED AS SPECIFIED.
 10. MORTAR USED IN MASONRY CONSTRUCTION SHALL CONTAIN 8 SACKS OF CEMENT PER CUBIC YARD. CONCRETE USED IN MANHOLE BASES SHALL CONFORM TO THE REQUIREMENTS OF CONCRETE FOR CONCRETE PAVEMENT CONSTRUCTION AS SPECIFIED IN THE CITY STANDARD PAVING SPECIFICATIONS USING CITY CONCRETE PAVEMENT MIX WITHOUT AIR ENTRAINING ADJUSTURE. MORTAR SHALL BE PLACED AROUND THE MANHOLE RING AS SHOWN ON THE DRAWINGS WHEN MANHOLES ARE CONSTRUCTED IN UNPAVED AREAS. MANHOLES CONSTRUCTED WHERE PIPE SIZES ARE SMALLER THAN 24\"/>

11. REINFORCING STEEL SHALL BE INSTALLED IN THE MANHOLE BASES AND SHALL CONSIST OF NO. 4 BARS PLACED ON 6\"/>
- 12. OPENINGS SHALL BE CUT INTO THE MANHOLE WALL WHEN OUTSIDE DROPS ARE CONSTRUCTED ON EXISTING MANHOLES. SUCH OPENINGS CUT INTO EXISTING MANHOLES SHALL BE AS SMALL AS PRACTICAL TO FACILITATE GASKETS SHALL BE USED WITH P.V.C. AND A.B.S. COMPOSITE PIPE. THE NEW PIPE SHALL BE GROUTED INTO THE OPENING USING AN APPROVED NONSHRINK GROUT FOR THE FULL MANHOLE WALL THICKNESS. THE EXTERIOR OF THE COMPLETED CONNECTION SHALL BE SEALED WITH AN APPROVED BITUMINOUS COATING SUCH THAT THE CONNECTION WILL BE WATER TIGHT. FLOOR OF MANHOLE SHALL BE MODIFIED TO FORM NEW FLOW CHANNEL FOR THE NEW CONNECTION AS INDICATED BY THE DRAWING. THIS WORK, INCLUDING MODIFICATION OF MANHOLE FLOOR, SHALL BE PAID FOR AT THE UNIT PRICE BID FOR OUTSIDE DROP STACK CONSTRUCTED ON EXISTING MANHOLE.
- 13. THE FLOORS OF ALL MANHOLES SHALL BE SHAPED WITH FLOW CHANNELS SUCH THAT THE MANHOLES WILL BE SELF-CLEANING AND FREE OF AREAS WHERE SOLIDS COULD BE DEPOSITED AS SEWAGE FLOWS THROUGH THE MANHOLE FROM ALL INLET PIPES TO THE OUTLET PIPE. FLOW CHANNELS SHALL BE SHAPED TO MATCH THE BOTTOM HALVES OF THE INFLOWING PIPES AND THE OUTFLOWING PIPE AS SHOWN BY THE DRAWINGS EXCEPT FOR INSIDE DROP MANHOLES. FLOW CHANNELS FOR INSIDE DROP MANHOLES SHALL BE CONSTRUCTED AS INDICATED BY THE DRAWING. MANHOLE FLOORS SHALL HAVE SLOPES OF 3 INCHES PER FOOT IN THE AREAS OUTSIDE OF THE FLOW CHANNELS SLOPED TOWARD THE FLOW CHANNELS. PIPES LAID THROUGH MANHOLES SHALL HAVE THE TOP HALF REVERSED TO MATCH THE FULL INSIDE DIAMETER OF THE MANHOLE. MANHOLE FLOORS SHALL THEN BE SHAPED AROUND THE BOTTOM HALF OF THE PIPE WHICH FORMS THE FLOW CHANNEL.
- 14. PIPES INSTALLED WITHIN THE EXCAVATION MADE FOR THE MANHOLE SHALL BE CRADLED WITH CONCRETE TO THE LIMITS OF THE MANHOLE EXCAVATION. WHEN CLAY PIPE IS USED, THE CRADLE SHALL EXTEND TO THE FIRST JOINT OUTSIDE THE MANHOLE. THE CRADLE SHALL BE TERMINATED AT THE CLAY PIPE JOINT IN A MANNER WHICH WILL MAINTAIN THE FLEXIBILITY OF THE JOINT. COST OF CRADLE WITHIN MANHOLE EXCAVATION OR TO CLAY PIPE JOINTS ADJACENT TO MANHOLE SHALL BE INCLUDED IN THE UNIT PRICE BID FOR THE MANHOLE.

15. MANHOLE COVER CASTINGS AND MANHOLE FRAME CASTINGS SHALL CONFORM TO THE REQUIREMENTS AS INDICATED IN THE STANDARD SPECIFICATIONS AND AS SHOWN IN THE STANDARD DETAIL DRAWING.
16. THE VERTICAL FREE FALL DROP INSIDE MANHOLES SHALL NOT EXCEED 2'. THE CROWS OF INFLOWING PIPES SHALL NEVER BE SET LOWER THAN THE CROWN OF THE OUTFLOWING PIPE.
17. STANDARD MANHOLES AND STANDARD INSIDE DROP MANHOLES SHALL BE BID AS STANDARD MANHOLES FOR THE TYPE AND DIAMETER INDICATED. OUTSIDE DROP MANHOLES SHALL BE BID AS STANDARD OUTSIDE DROP MANHOLES FOR THE TYPE AND DIAMETER INDICATED. ALL MANHOLE DIAMETERS WILL BE 4' UNLESS INDICATED OTHERWISE.
18. A BRICK MASONRY COLLAR SHALL BE INSTALLED BETWEEN THE CAST IRON FRAME AND THE CONCENTRIC CONE. THE COLLAR WILL HAVE 8\"/>



**ALTERNATE CONSTRUCTION
IN UNPAVED AREAS**

"AS BUILT"
9-18-96

PEPPERMINT PARK ADDITION
C.O.W. PROJ. NO. 44-0-0000
LSEPPS

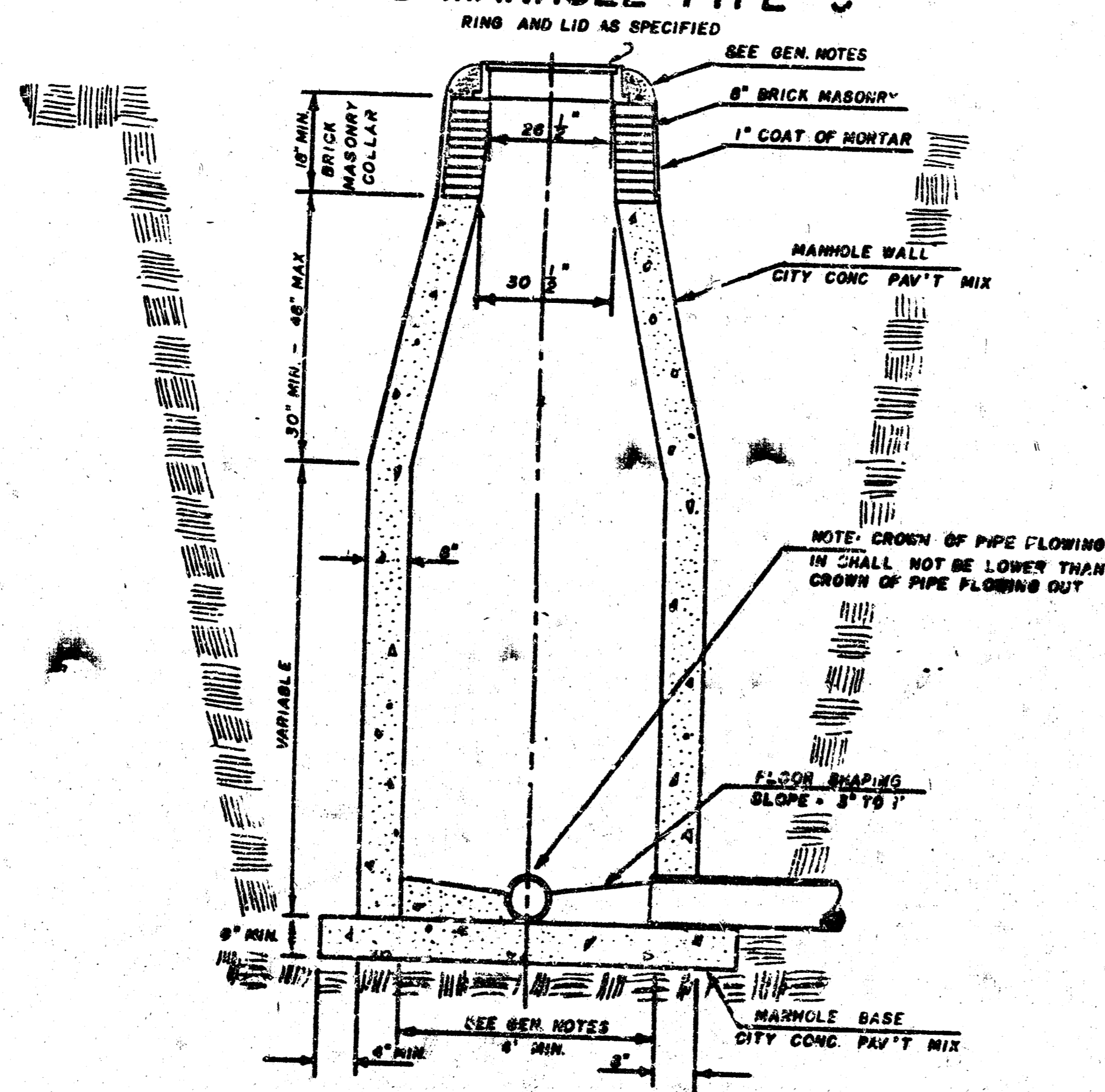
REVISED NOV. 1983
NOTE NO. 16 REVISED JAN. 1991
Revised 3-21-89
Revised 8-10-88
Revised June 12, 1986

SEWER APPURTENANCES DETAILS

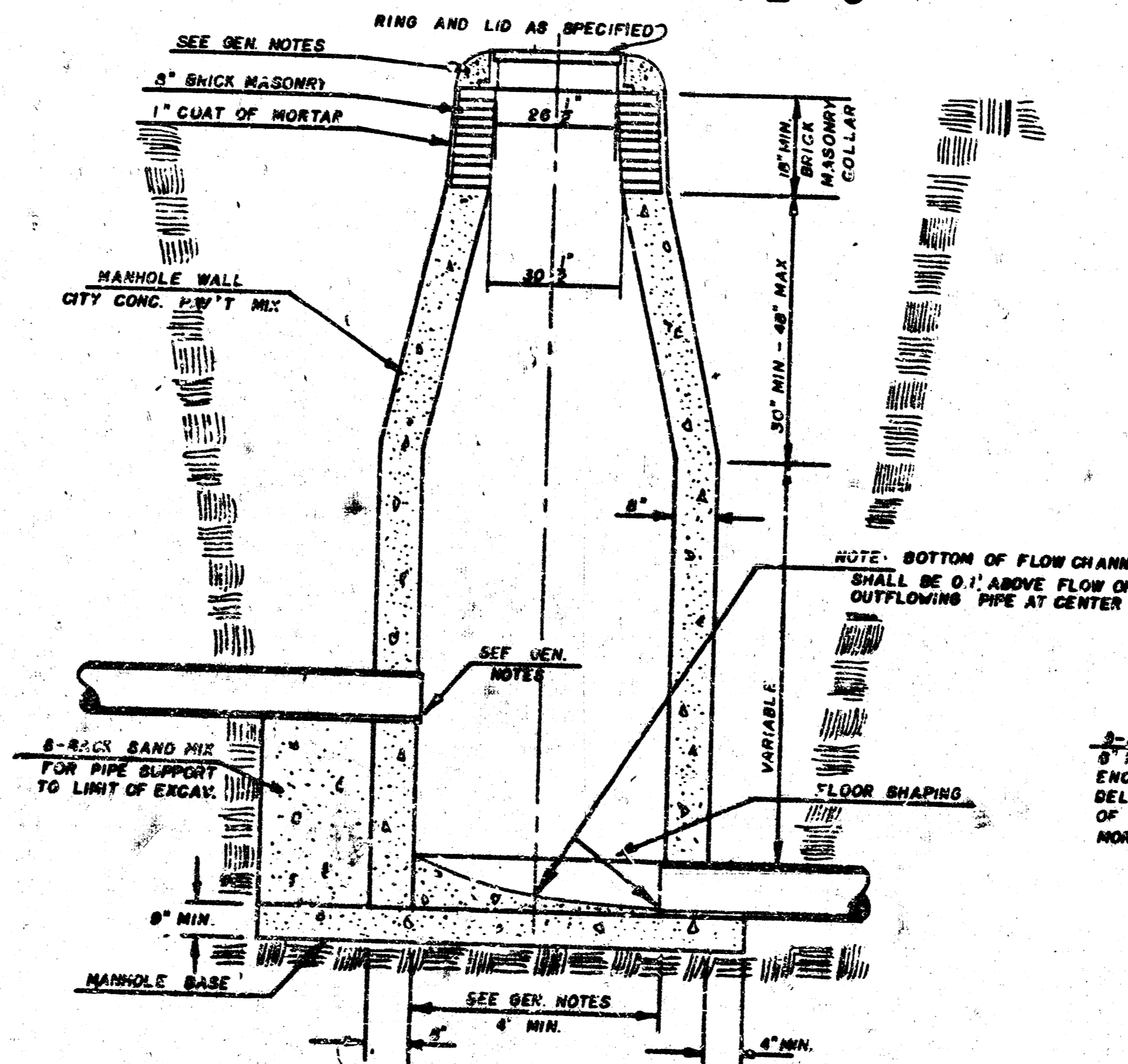
ADOPTED AS STANDARD DESIGN
BY

City of Wichita, Kansas

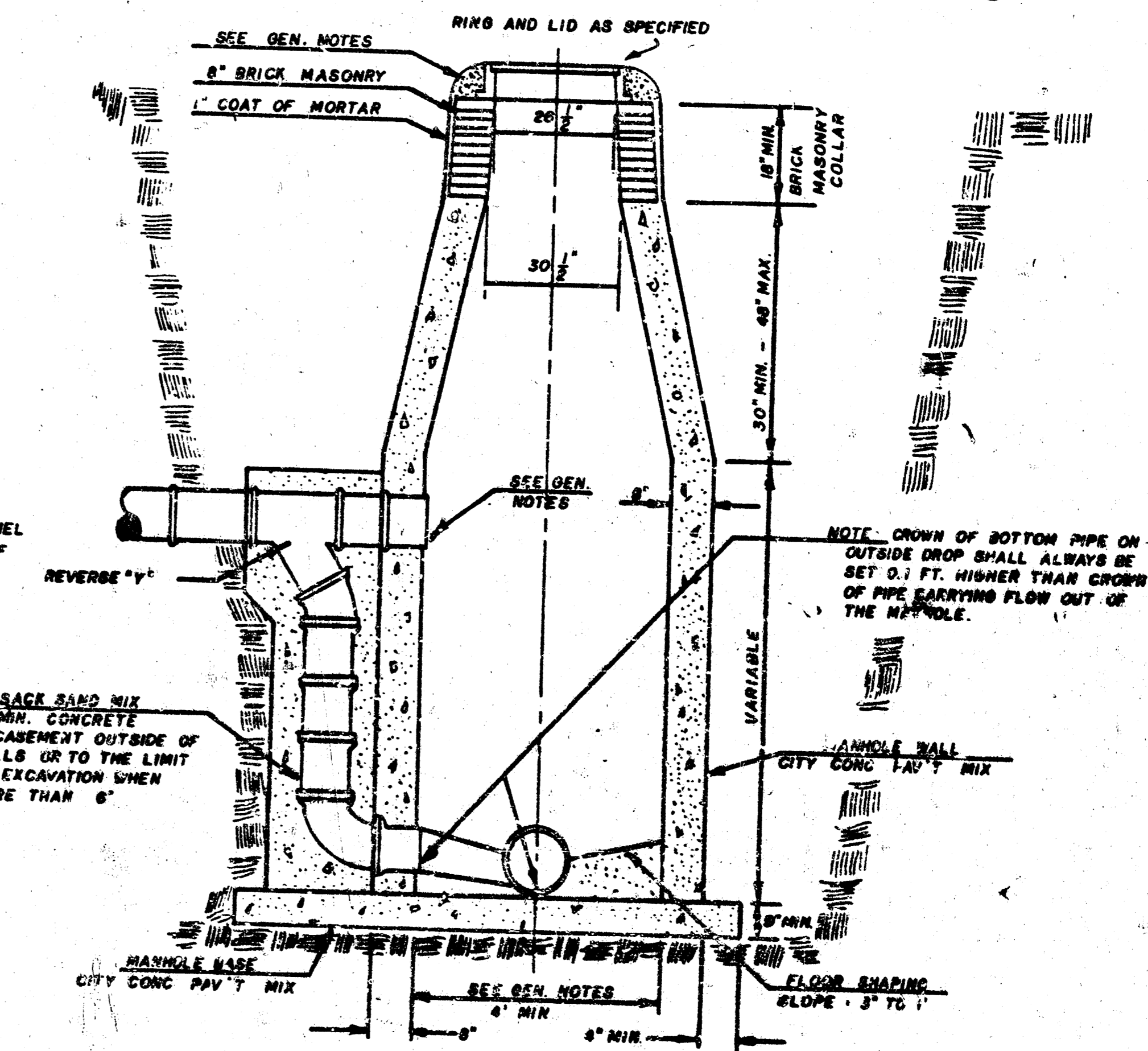
STANDARD MANHOLE TYPE "C"



INSIDE DROP MANHOLE TYPE "C"



OUTSIDE DROP MANHOLE TYPE "C"



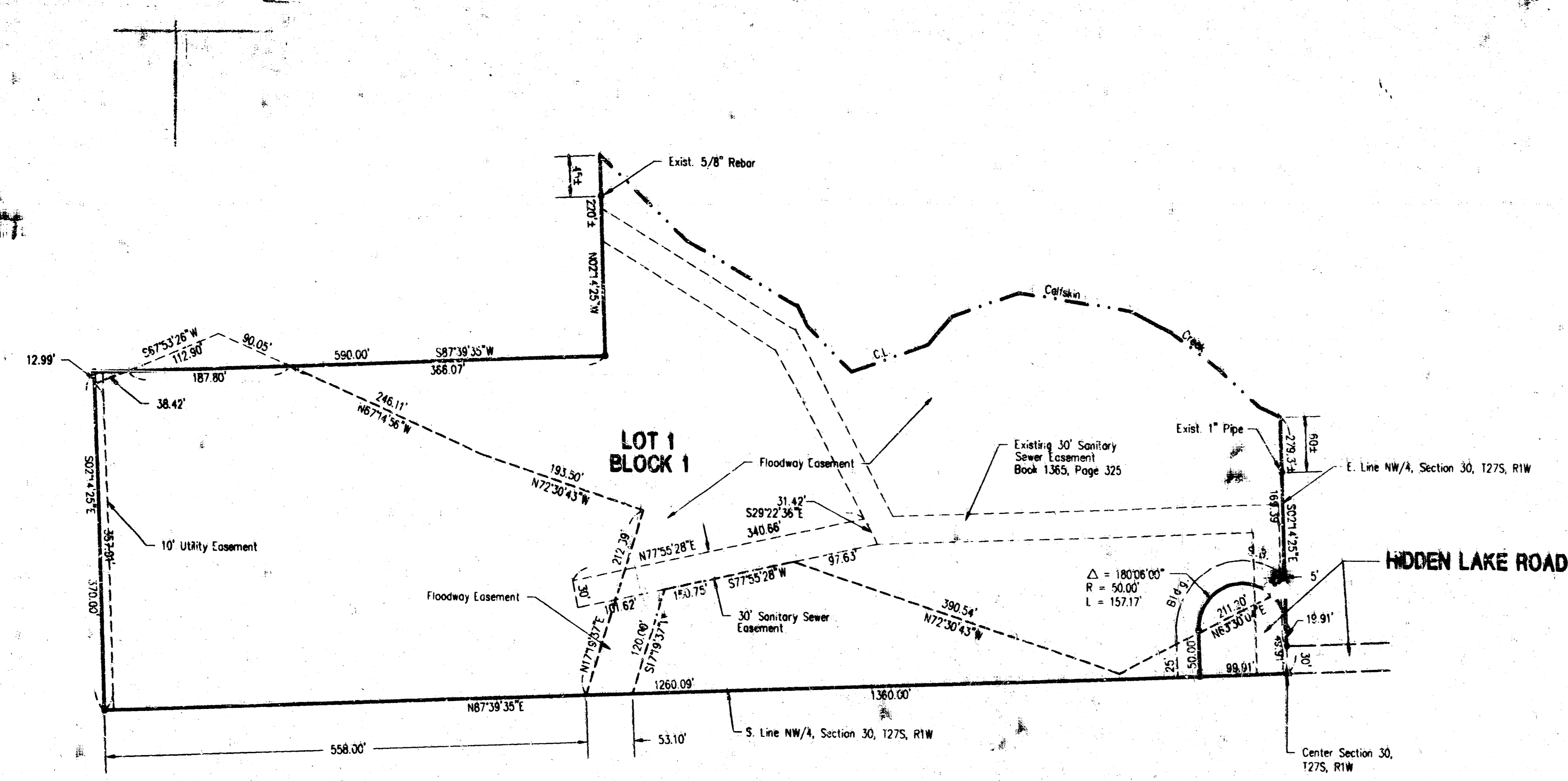
GENERAL NOTES

- MORTAR USED IN MASONRY CONSTRUCTION SHALL CONTAIN 8 SACKS OF CEMENT PER CUBIC YARD. CONCRETE USED IN MANHOLE WALLS AND BASES SHALL CONFORM TO THE REQUIREMENTS OF CONCRETE FOR CONCRETE PAVEMENT CONSTRUCTION AS SPECIFIED IN THE CITY STANDARD PAVING SPECIFICATIONS USING CITY CONCRETE PAVEMENT MIX WITHOUT AIR ENTRAINING ADJUSTURE. MORTAR SHALL BE PLACED AROUND THE MANHOLE RING AS SHOWN ON THE DRAWINGS WHEN MANHOLES ARE CONSTRUCTED IN UNPAVED AREAS. TYPE "C" MANHOLES CAN BE CONSTRUCTED ONLY WHERE PIPE SIZES ARE 8" OR SMALLER. THE INSIDE DIAMETER OF TYPE "C" MANHOLES SHALL BE 4'. COMPLETED MANHOLE SHALL BE WITHOUT LEAKS AND WATER TIGHT.
- REINFORCING STEEL SHALL BE INSTALLED IN THE MANHOLE BASE. REINFORCING STEEL SHALL CONSIST OF NO. 4 BARS PLACED ON 6" CENTERS IN BOTH DIRECTIONS. REINFORCING STEEL SHALL BE PLACED 6" ABOVE THE BOTTOM OF THE MANHOLE BASE. COST OF FURNISHING AND INSTALLING REINFORCING STEEL SHALL BE INCLUDED IN THE UNIT PRICE BID FOR THE MANHOLE.
- AN OPENING SHALL BE CUT IN THE MANHOLE WALL FOR THE UPPER INLET PIPE FOR INSIDE AND OUTSIDE DROP MANHOLES. THE UPPER INLET PIPE SHALL BE GROUTED INTO THIS OPENING WITH NON-SHRINK GROUT. THE EXTERIOR OF THIS COMPLETED CONNECTION SHALL BE SEALED WITH AN APPROVED BITUMINOUS COATING SUCH THAT THE CONNECTION WILL BE WATER TIGHT.
- FLOORS OF ALL MANHOLES SHALL BE SHAPED WITH FLOW CHANNELS SUCH THAT THE MANHOLES WILL BE SELF CLEARING AND FREE OF AREAS WHERE SOLIDS COULD BE DEPOSITED AS SEWAGE FLOWS THROUGH THE MANHOLE FROM ALL INLET PIPES TO THE OUTLET PIPE. FLOW CHANNELS SHALL BE FORMED TO MATCH THE BOTTOM HALVES OF THE INFLOWING PIPES AND THE OUTFLOWING PIPE AS SHOWN BY THE DRAWINGS EXCEPT FOR INSIDE DROP MANHOLES. FLOW CHANNELS FOR INSIDE DROP MANHOLES SHALL BE CONSTRUCTED AS INDICATED BY THE DRAWINGS. MANHOLE FLOORS SHALL HAVE SLOPES OF 3 INCHES PER FOOT IN THE AREAS OUTSIDE OF THE FLOW CHANNELS SLOPED TOWARD THE FLOW CHANNELS. PIPES LAID THROUGH MANHOLES SHALL HAVE THE TOP HALF REMOVED TO NEAT LINES FOR THE FULL INSIDE DIAMETER OF THE MANHOLE. MANHOLE FLOORS SHALL THEN BE SHAPED AROUND THE BOTTOM HALF OF THE PIPE WHICH FORMS THE FLOW CHANNEL.
- PIPES INSTALLED WITHIN THE EXCAVATION MADE FOR THE MANHOLE SHALL BE CRADLED WITH CONCRETE TO THE LIMITS OF THE MANHOLE EXCAVATION. WHEN CLAY PIPE IS USED, THE CRADLE SHALL EXTEND TO THE FIRST JOINT OUTSIDE THE MANHOLE. THE CRADLE SHALL BE TERMINATED AT THE CLAY PIPE JOINT IN A MANNER WHICH WILL MAINTAIN THE FLEXIBILITY OF THE JOINT. COST OF CRADLE WITHIN MANHOLE EXCAVATION OR TO CLAY PIPE JOINTS ADJACENT TO MANHOLE SHALL BE INCLUDED IN THE UNIT PRICE BID FOR THE MANHOLE.
- MANHOLE COVER CASTINGS AND MANHOLE FRAME CASTINGS SHALL CONFORM TO THE REQUIREMENTS AS INDICATED IN THE STANDARD SPECIFICATIONS AND AS SHOWN IN THE STANDARD DETAIL DRAWINGS.
- THE VERTICAL FREE FALL DROP INSIDE MANHOLES SHALL NOT EXCEED 8'. THE CROWNS OF INFLOWING PIPES SHALL NEVER BE SET LOWER THAN THE CROWN OF THE OUTFLOWING PIPE.
- STANDARD MANHOLES TYPE "C" AND STANDARD INSIDE DROP MANHOLES TYPE "C" SHALL BE BID AS STANDARD MANHOLES FOR THE TYPE AND DIAMETER INDICATED. OUTSIDE DROP MANHOLES TYPE "C" SHALL BE BID AS STANDARD OUTSIDE DROP MANHOLES FOR THE TYPE AND DIAMETER INDICATED. ALL MANHOLE DIAMETERS WILL BE 4' UNLESS INDICATED OTHERWISE.

"AS BUILT"
9-18-96

PEPPERMINT PARK ADDITION
PROJ. NO. 488-2886
LSP/MS

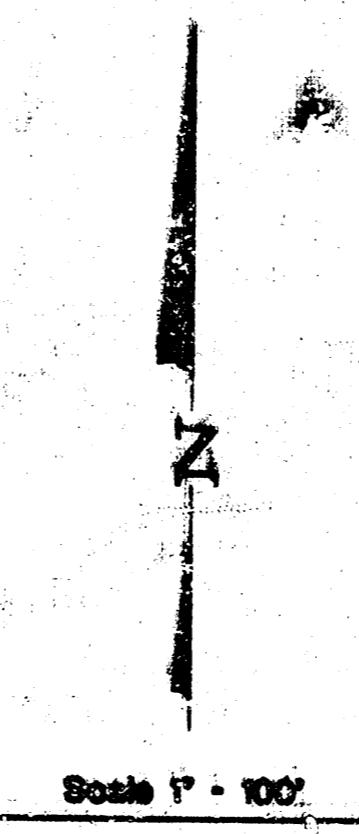
PC58-9



PAD ELEVATION
 Minimum Building Pad Elev. 134.0 City Datum
 (Elev. 1321.4 MSL)

BENCHMARK
 119th St. West & 1/2 Mile South of Maple
 City of Wichita Bench Mark Disc, 39' East
 of Centerline on 1/2 Section Line and 3'
 South of Fence Corner. Elev. 130.36 City
 Datum, 1317.76 MSL

*Referenced To The National Geodetic Vertical
 Datum of 1929.



PEPPERMINT PARK ADDITION

TO WICHITA, SEDGWICK COUNTY, KANSAS

20.00
12

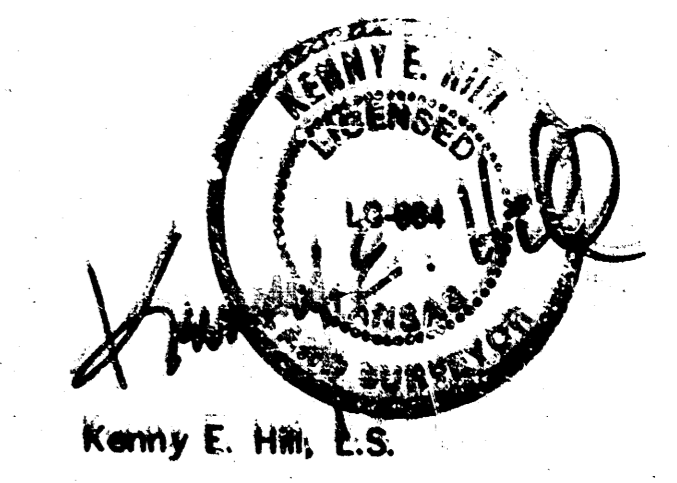
STATE OF KANSAS, COUNTY OF SEDGWICK: ss.

I, Kenny E. Hill, being a duly licensed Land Surveyor in said County and State, do hereby certify that I have been in responsible charge of surveying and platting "PEPPERMINT PARK ADDITION" to Wichita, Kansas, located in the Northwest Quarter of Section 30, Township 27 South, Range 1 West of the 6th P.M. Sedgwick County, Kansas being described as follows:

Beginning at the Southeast Corner of the Northwest Quarter of Section 30, Township 27 South, Range 1 West of the Sixth Principal Meridian in Sedgwick County, Kansas, thence West along the South line of said Northwest Quarter an arc assumed bearing of S 67°39'30" W, one thousand three hundred sixty (1360.00) feet, thence N 02°14'25" W and parallel with the East line of said Northwest Quarter, three hundred seventy (370.00) feet, thence N 87°39'30" E and parallel with the South line of said Northwest Quarter, five hundred ninety (590.00) feet, thence N 02°14'25" W and parallel with the East line of said Northwest Quarter, two hundred twenty (220.0) feet to the centerline of Coffey Creek, thence Easterly along the centerline of Coffey Creek to the East line of said Northwest Quarter, thence S 02°14'25" E along the East line of said Northwest Quarter, two hundred seventy nine and three tenths (279.3) feet to the point of beginning, containing 12.25 acres more or less.

The accompanying plat is a true and correct exhibit of property surveyed.

Dated this 12th day of July, 1995.



KNOW ALL MEN BY THESE PRESENTS:

That I, the undersigned, have caused the land described in the Surveyor's Certificate to be platted into a lot, a block and a street. The street is hereby dedicated to and for the use of the public. Easements are hereby granted as indicated for the construction and maintenance of drainage, utilities and a roadway. The minimum pad elevation for Lot 1, Block 1 shall be 134.0 city datum (1321.4 MSL). Maintenance of the roadway shall be the responsibility of the owner of Lot 1 until such time as the governing body exercising jurisdiction elects to assume the responsibility for maintenance and improvement of the drainage. Provided further, that no building shall be constructed on or within said roadway, nor shall any fill, change of grade, creation of channel or other work be carried on without the permission of the Wichita Valley Center Flood Control Office or their successors in office.

Richard G. Chance
 Richard G. Chance

STATE OF KANSAS, COUNTY OF SEDGWICK: ss.

This instrument was acknowledged before me on this 11th day of July, 1995, by Richard G. Chance.

My Appointment Expires: August 5, 1995

John S. Baker
 Notary Public

This plat of "PEPPERMINT PARK ADDITION" to Wichita, Kansas has been submitted to and approved by the WICHITA-SEDGWICK COUNTY METROPOLITAN AREA PLANNING COMMISSION, Wichita, Kansas.

Dated this 27th day of June, 1995.



WICHITA SEDGWICK COUNTY METROPOLITAN
 AREA PLANNING COMMISSION
John W. McKay Jr.
 John W. McKay Jr., Chairman
Marilyn S. Kroot
 Marilyn S. Kroot, Secretary

This plat approved and all dedications shown hereon accepted by the City Council of the City of Wichita, Kansas, on this 28th day of August, 1995.



Bob K. Burnett
 Bob K. Burnett, Mayor
Pat Burnett
 Pat Burnett, Deputy City Clerk

Entered on transfer record this 9th day of September, 1995.

Joseph E. ...
 Joseph E. ...

This is to certify that this instrument was filed for record in the Register of Deeds Office at WICHITA, KANSAS, on this 27th day of SEPTEMBER, 1995.

Ed ...
 Ed ...

4-18-96
 15-CALY
 455995
 C.O.W. PROJ. NO. 9-13-2
 5

PC58-9