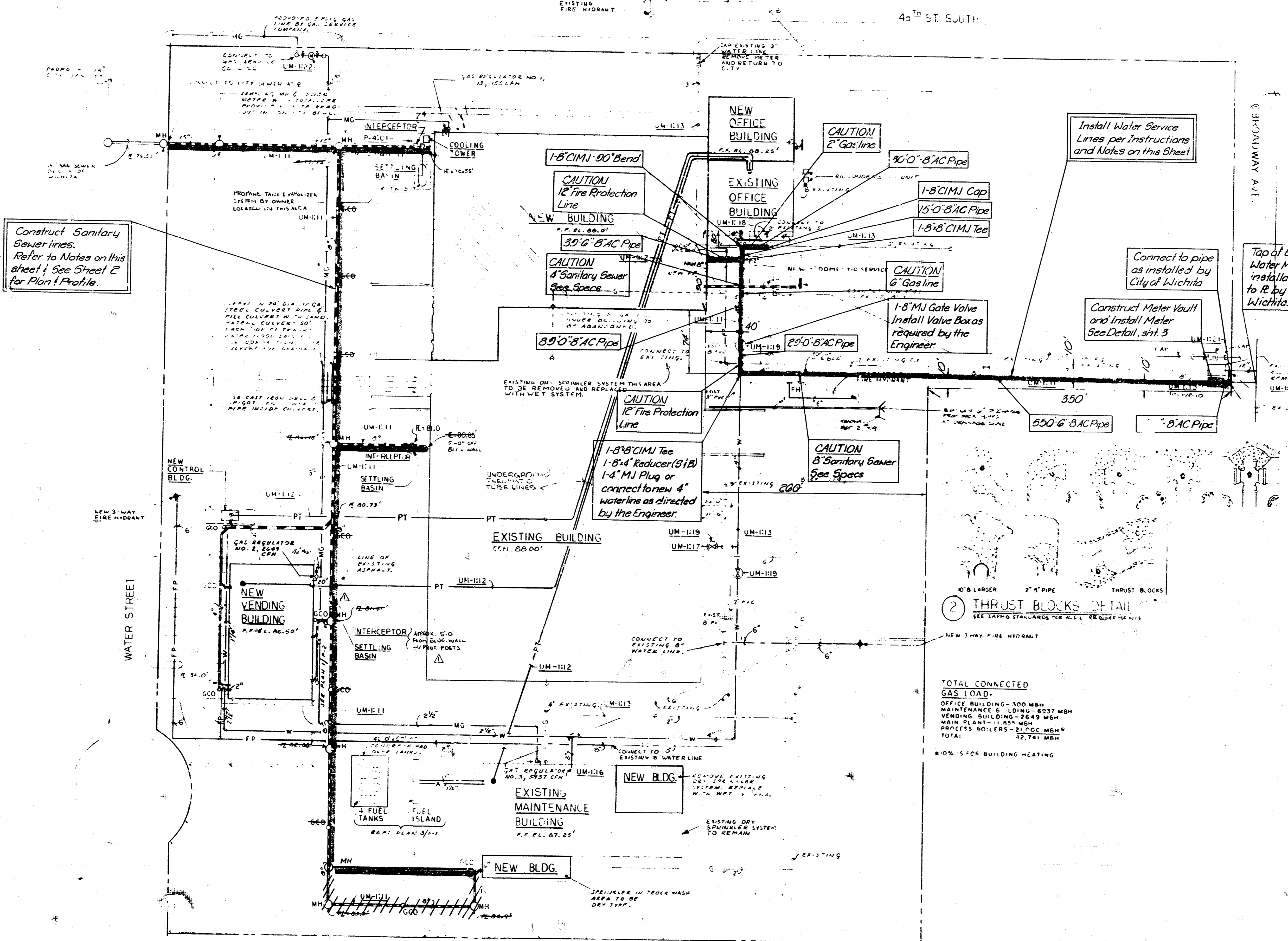


APPROVED AS NOTED
 By CITY ENGINEER OF WICHITA
 Sanitary Sewers
 Storm Sewers
 Driveway Approaches

NOTE TO CONTRACTOR
 This project will be constructed under the supervision of the CITY ENGINEER and conforming to the SPECIFICATIONS of the CITY OF WICHITA. The CONTRACTOR will pay the City of Wichita for all costs of inspection.

Note: All Water Mains and Appurtenances shall be installed in accordance with Standard Specifications for Water Mains Installations, 1453.

- NOTES:**
- UM-1-01 ALL SITE UTILITY LINES ARE NEW UNLESS INDICATED AS EXISTING.
 - UM-1-02 LOCATIONS OF EXISTING SITE UTILITY LINES WERE TAKEN FROM ORIGINAL CONSTRUCTION DRAWINGS. CONTRACTOR SHALL FIELD VERIFY LOCATION, DEPTH, ETC., OF EXISTING LINES IN AREAS WHERE NEW EXCAVATION OCCURS. ANY DAMAGE BY CONTRACTOR TO EXISTING LINES MUST BE REPAIRED AT THE CONTRACTOR'S EXPENSE.
 - UM-1-03 SEE SITE ELECTRICAL PLAN FOR LOCATION AND EXTENT OF ELECTRICAL UTILITIES.
 - UM-1-04 ALL PIPING INSTALLED UNDER PAVING OR ASPHALT DRIVES SHALL BE INSTALLED ON SAND BED, BACKFILLED WITH SAND, AND BACKFILL COMPACTED BY WATER FLOCCING. ASPHALT SHALL BE 5% COST.
 - UM-1-05 CONTRACTOR SHALL BEAR ALL COSTS FOR NEW GAS, WATER, AND SEWER SERVICE TO PLANT, SET METERS, AND INSTALL NEW PIPING, ETC.
 - UM-1-06 CONTRACTOR PAY ALL COSTS TO FURNISH AND INSTALL NEW WATER AND GAS METER.
 - UM-1-07 FIRE PROTECTION CONTRACTOR SHALL VERIFY SIZE OF WATER SERVICE LINES TO ASCERTAIN THAT THEY ARE OF ADEQUATE SIZE. IF HYDRAULIC CALCULATIONS SHOW A LARGER LINE SIZE IS REQUIRED, CONTRACTOR SHALL FURNISH AND INSTALL THAT SIZE AT HIS OWN EXPENSE.
 - UM-1-08 ALL GROUND CLEARANCES MUST BE RATED FOR 85,000 POUND TRUCK TRAFFIC.
 - UM-1-09 MOST RECENT ACCEPTED FLOW TEST PROVIDED BY CITY OF WICHITA TAKEN ON 6-29-78 AT CORNER OF PALMSIDE AND 47th STREETS:
 FLOW: 1920 CPM
 STATIC: 90 PSIG
 RESIDUAL: 70 PSIG
 - UM-1-10 EXISTING FIRE PROTECTION SHOP DRAWINGS INDICATE 0.25 GPM DENSITY. MOST REMOTE 4000 SQ. FT. WITH 130 SQ. FT. SPRINKLER SPACING.
 - UM-1-11 CONTRACTOR SHALL COMPLY WITH ALL REQUIREMENTS OF THE STATE OF KANSAS TO DESIGN, ENGINEER, PROFILE, SURVEY, INSPECT, AND PERFORM ALL OTHER SERVICES REQUIRED BY AND IN CONFORMANCE WITH CITY OF WICHITA DEPARTMENT OF ENGINEERING AND STATE OF KANSAS FOR ENGINEERING OF ALL WATER AND SANITARY SEWER LINES OUTSIDE BUILDING ON THIS PROPERTY LARGER IN SIZE THAN 6". THE CONTRACTOR SHALL BE REQUIRED TO OBTAIN ALL APPROVALS AND PROVIDE ALL SUBMITTALS REQUIRED TO ENGINEER AND CONSTRUCT THE SANITARY SEWER AND WATER LINE SYSTEM. ALL COSTS SHALL BE BORNE BY THE CONTRACTOR.
 - UM-1-12 REFERENCE DRAWING M-1, M-2, M-3, AND M-8 FOR LOCATION OF PNEUMATIC TUBE STATIONS. SEE SPECIFICATIONS FOR TUBE SIZES, MATERIALS, AND INSTALLATION DETAILS.
 - UM-1-13 CONTRACTOR SHALL VERIFY ALL EXISTING 12" CAST IRON WATER SERVICE LINES AND ALL EXISTING 12" CAST IRON WATER SERVICE LINES OUTSIDE BUILDING FROM ORIGINAL SHOP DRAWINGS. FIELD VERIFY EXTENT OF THE LOCATION OF ALL EXISTING 12" CAST IRON WATER SERVICE LINES. TAKE CONNECTION WITH BUILDING AS SHOWN.
 - UM-1-14 TAP EXISTING 12" CAST IRON WATER LINE FOR NEW DOMESTIC SERVICE. COORDINATE WITH CITY OF WICHITA WATER DEPARTMENT.
 - UM-1-15 PROVIDE NEW DOMESTIC WATER METER AND PIT AS INDICATED, AS SPECIFIED AND AS DETAILED ON THESE DRAWINGS PER CITY OF WICHITA STANDARDS AND APPROVAL.
 - UM-1-16 REMOVE EXISTING 2" DOMESTIC WATER SERVICE TO MAINTENANCE BUILDING AND REPLACE WITH 3". SEE P-3 FOR CONTINUATION.
 - UM-1-17 RECONNECT WATER SERVICE TO MANUFACTURING BUILDING. SIZE 1/2".
 - UM-1-18 RECONNECT 2" WATER SERVICE TO OFFICE BUILDING.
 - UM-1-19 PROVIDE VALVE BOX WHERE INDICATED. BOX TO BE STANDARD CITY OF WICHITA METER CAN WITH GATE VALVE.
 - UM-1-20 BURY ALL SITE WATER PIPING WITH MINIMUM OF 48" OF BACKFILL COVER.
 - UM-1-21 EXISTING GAS METER AND REGULATOR TO BE REMOVED. CAP EXISTING 6" GAS PIPING UNDERGROUND PER GAS SERVICE COMPANY REQUIREMENT.
 - UM-1-22 NEW MEDIUM PRESSURE GAS METER (5 POUND GAS) WITH SHUTOFF VALVES.



Construct Sanitary Sewer lines. Refer to Notes on this sheet & See Sheet 2 for Plan & Profile.

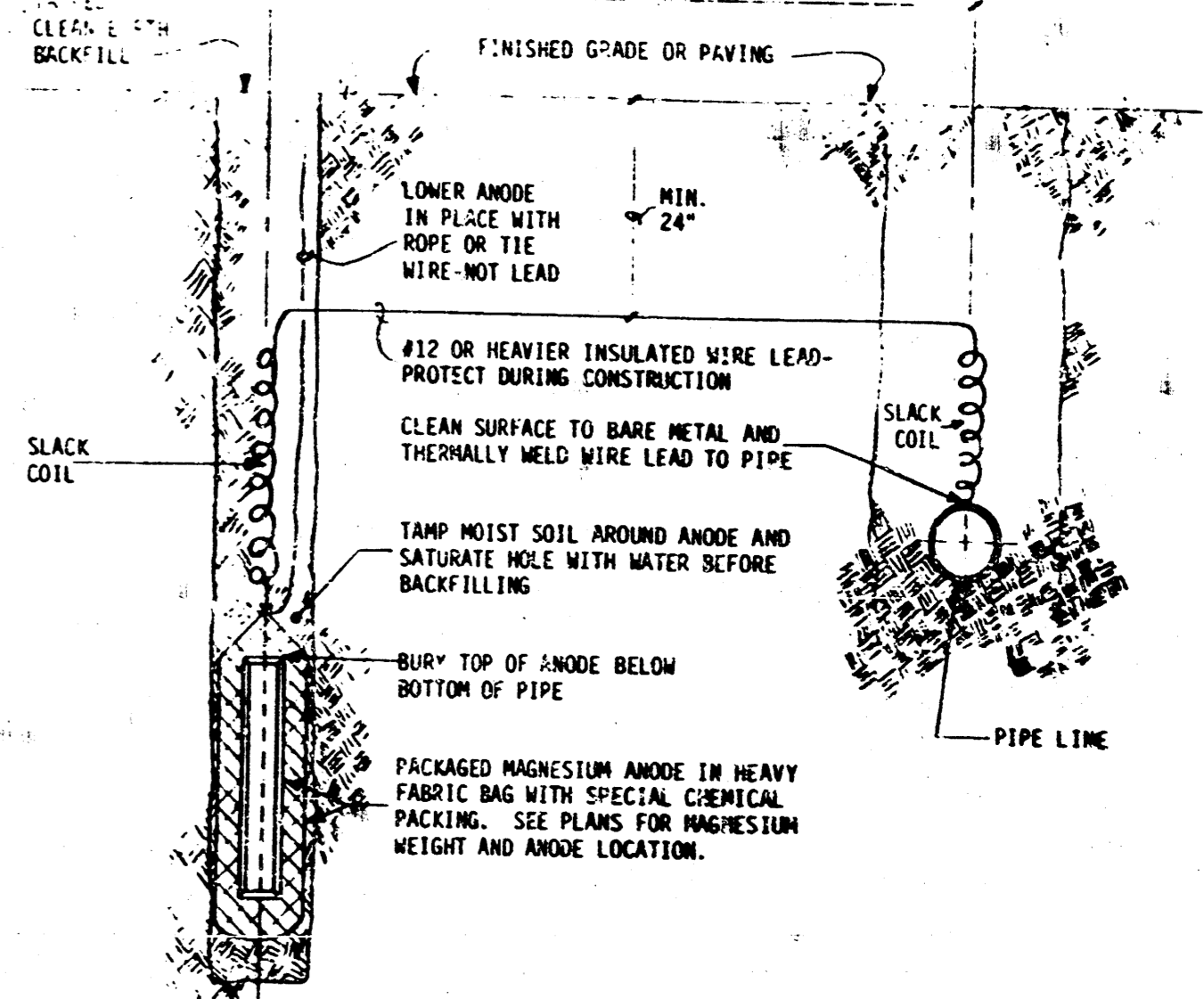
Install Water Service Lines per Instructions and Notes on this Sheet

Connect to pipe as installed by City of Wichita

Top of Existing 12" Water Main and installation of pipe to 12 by City of Wichita.

THRUST BLOCKS DETAIL
 SEE TAPPING STANDARDS FOR ALL TAPPING OPERATIONS

TOTAL CONNECTED GAS LOAD:
 OFFICE BUILDING - 100 MBH
 MAINTENANCE BLDG - 6537 MBH
 VENDING BUILDING - 2649 MBH
 MAIN PLANT - 1185 MBH
 PROCESS BUILDERS - 2150 MBH
 TOTAL - 12,751 MBH



ALL SURFACES OF THE UNDERGROUND PIPING SHALL BE THOROUGHLY CLEANED TO REMOVE ALL OIL, GREASE, DIRT, RUST, MILL SCALE, WELD SCALE, AND OTHER FOREIGN MATERIAL PRIOR TO THE APPLICATION OF ANY COATING. THIS SHALL BE ACCOMPLISHED BY THE USE OF SUITABLE SOLVENTS TO REMOVE OIL AND GREASE FOLLOWED BY SANDBLASTING.

PROTECTIVE COATING FOR UNDERGROUND PIPE SHALL CONSIST OF COAT TAR PRIMER, 3/32" THICK COATING OF HOT COAL TAR ENAMEL, FIBROUS GLASS MAT, 1/32" THICK COATING OF HOT COAL TAR ENAMEL, BONDED WARP OF ASBESTOS FELT, AND WARP OF ROPE PAPER. ALL CLEANING, COATING, TESTING, MARKING, AND INSTALLATION SHALL BE IN ACCORDANCE WITH ANNA C203 TOGETHER WITH THE APPLICABLE SECTIONS IN THE APPENDIX OF THESE SPECIFICATIONS.

PROTECTIVE COATINGS MAY BE SHOP OR FIELD APPLIED. IF SHOP APPLIED, ALL DAMAGED AREAS SHALL BE REPAIRED AND FIELD WELD AREAS COATED IN THE FIELD.

3 PIPE PROTECTION DETAIL
 NO SCALE

1 MECHANICAL & PLUMBING SITE UTILITY PLAN
 No Scale



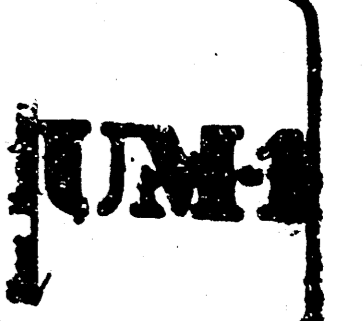
McCREARY SWANSON & ASSOCIATES
 ARCHITECTS-ENGINEERS
 5200 SO. HARVARD
 SUITE 8-G
 TULSA, OKLA. 74135
 TELEPHONE (918) 749-2231

REVISION: 2/11/78
 A. SWANSON
 3. SETTING MAIN AT
 MAIN BLDG. - 11/11/78
 SIZE OF SEWER MAIN
 DATE: 4-7-78
 DRAWN BY:
 CHECKED BY: K.L.B.
 JOB NO. 10-232

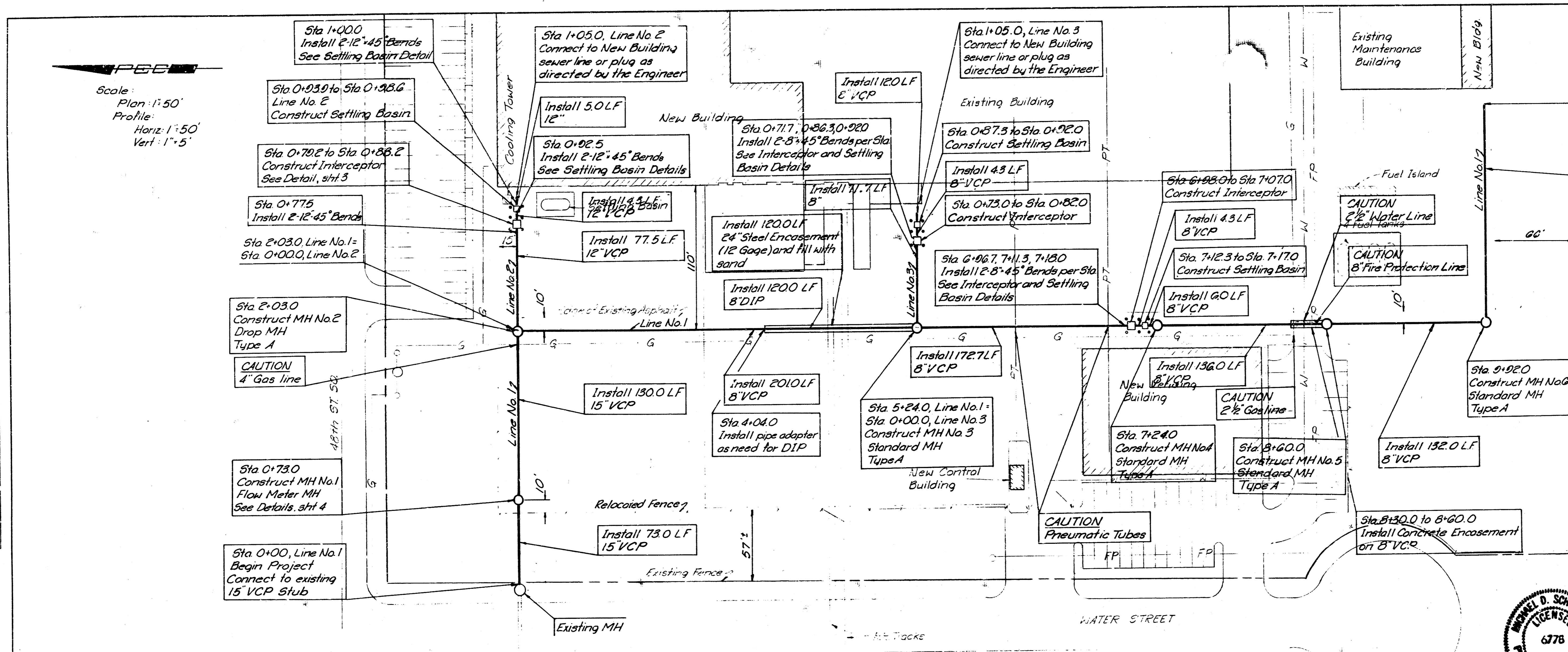
L & B Lee & Browne
 Consulting Engineers, Inc.
 Tulsa, Oklahoma

Sanitary Sewer and Water Supply
 Pepsi Cola Bottling Co.
 KEY MAP & WATER LINE PLAN
 Professional Engineering Consultants PA
 Wichita, Kansas
 City of Wichita Proj. No. 468-78-210-20000-000-000-008 Sht. 1 of 4

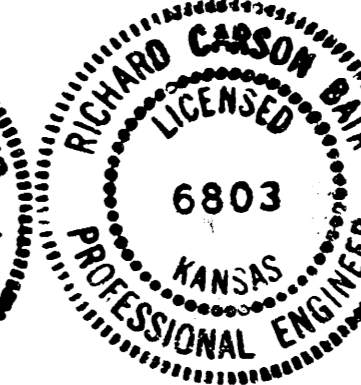
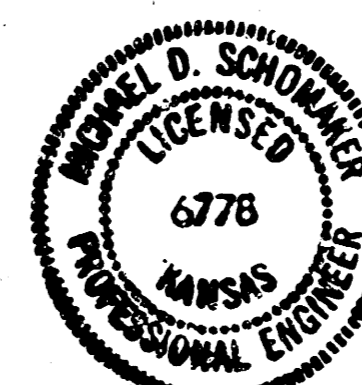
A BOTTLING FACILITY
 FOR PEPSI COLA
 101 W. 20th St. Bldg.
 WICHITA, KANSAS 67207
 SITE UTILITIES-MECHANICAL



Scale:
Plan: 1"=50'
Profile: 1"=5'
Vert: 1"=5'



- GENERAL NOTES
1. THE CONTRACTOR SHALL MEET THE REQUIREMENTS OF THE CITY OF WICHITA DEPARTMENT OF PUBLIC WORKS SPECIFICATIONS FOR SANITARY SEWERS IN THE COMPLETE INSTALLATION AND CONSTRUCTION OF THE SEWER LINES SHOWN HEREIN.
 2. SEWER PIPE LENGTHS SHOWN IN THE PLANS ARE MEASURED FROM THE CENTER OF MANHOLE TO CENTER OF MANHOLE WITH NO DEDUCTIONS MADE FOR MANHOLES EXCEPT THAT THE PROJECT BEGINS AT THE END OF THE EXISTING 15-INCH STUB IN THE EXISTING MANHOLE. MEASURED SEWER PIPE LENGTHS ARE TO PIPE FITTING JOINTS OR TO THE OUTSIDE WALL OF STRUCTURES OTHER THAN MANHOLES.
 3. THE CONTRACTOR SHALL LOCATE AND UNCOVER UTILITY LINES IN THE FIELD PRIOR TO BEGINNING WORK AND SHALL MAKE ADJUSTMENTS, IF NECESSARY, AS DIRECTED BY THE ENGINEER.
 4. THE CONTRACTOR SHALL CONFIRM THE LOCATIONS AND ELEVATIONS OF BUILDING SEWERS WITH THE APPROPRIATE SUBCONTRACTORS AND SHALL MAKE ADJUSTMENTS IN LINES, GRADES, AND SEWER LENGTHS TO CONNECT TO THE BUILDING SEWERS AS DIRECTED BY THE ENGINEER.
 5. THE CONTRACTOR SHALL INSTALL 3" DIAMETER CONCRETE FILLED PROTECTION POSTS AROUND SETTLING BASINS AND OIL INTERCEPTORS AS INDICATED ON THE PLANS. POSTS SHALL EXTEND 36" ABOVE FINISH GRADE.
 6. Ductile Iron pipe shall be as required by the City of Wichita Standard Specifications including Polybord type lining inside pipe.



Sanitary Sewer and Water Supply
Pepsi Cola Bottling Co.
SANITARY SEWER PLAN & Profile
Professional Engineering Consultants, P.A.
Wichita, Kansas
City of Wichita Proj. No. 465-76-245-00000-000-000-008

Shi 2 of 4

BM - City of Wichita Standard disc
28 E + 28.3 N of 47th St + Broadway Elev. 82.84

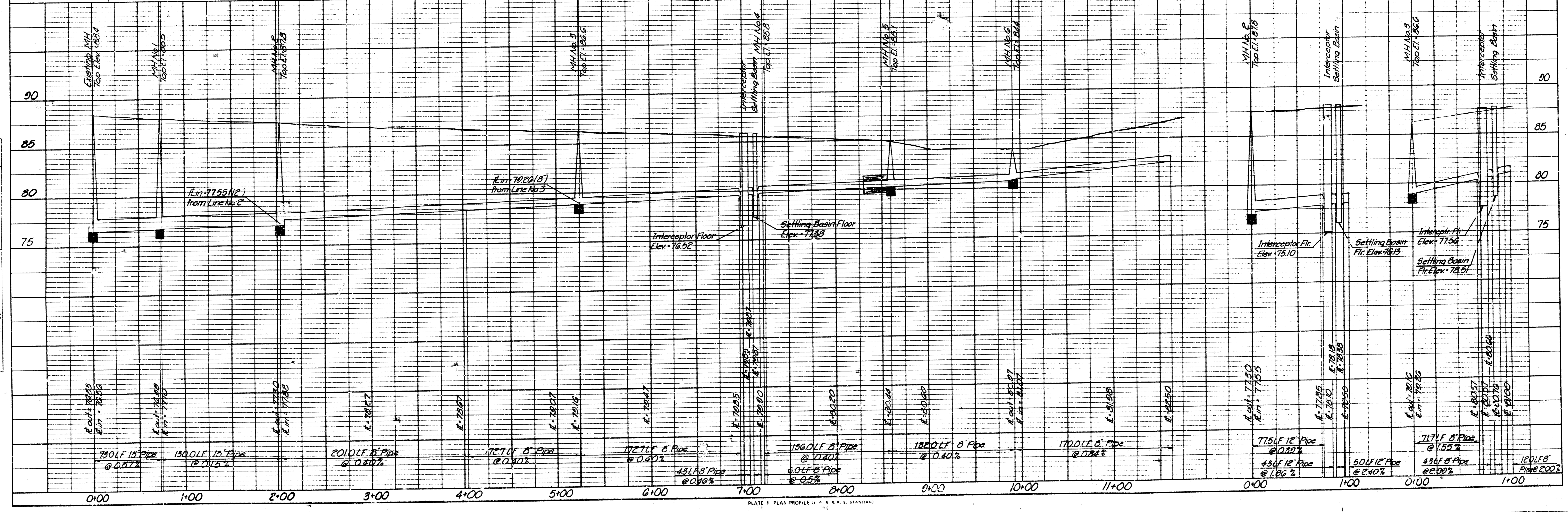


PLATE 1 PLAN PROFILE (1" = 50' PLAN, 1" = 5' PROFILE)
ENGINEERING CONSULTANTS, P.A.

| DATE | BY | REVISION |
|------|----|------------------|
| | | FORWARD |
| | | NOTED |
| | | ALIGNED |
| | | CHECKED |
| | | NO. OF WKS. ORG. |
| | | NO. |

| DATE | BY | REVISION |
|------|----|------------------------------|
| | | SUBMITTED |
| | | GRADES CHECKED |
| | | STRUCTURAL MATERIALS CHECKED |
| | | NO. |

4/6

