

POT Sta. 2+35.07
 1. 1/2" Rebar in Natural Ground @ POT
 2. N.E. Cor. Sculpture in Island
 3. N.W. Cor. Sculpture in Island
 4. Bk. Curb

PI Sta. 4+23.06
 1. Chis. "x" in Conc. Pavt. @ P.I.
 2. N.E. Cor. Henrion Gym.
 3. N.W. Cor. Henrion Gym
 4. E. Jt.

PI Sta. 6+32.84
 1. R.R. Spike in Pavt. - Chis. "x" @ P.I.
 2. W. Bk. Curb Parking Lot
 3. Light Pole Base
 4. S.W. Cor. Parking Lot

*PI Sta. 9+44.36
 1. 1/2" Rebar @ P.I.
 2. S.W. Cor. Utility Vault 075' NE
 3. Nail & Disk in 10" Elm 79.9' S.E.
 4. W. Edge S.W. 477' E.

Use 1/2" rebar in storm
 5" storm
 Except 5" storm
 Used 10" storm
 to Streetsim 10
 to (P.L. Lot) 10

Remove Exist Asphalt
 Sidewalk & Construct
 Concrete Sidewalk as Shown
 to Approximately Same
 Grade as Exist Sidewalk

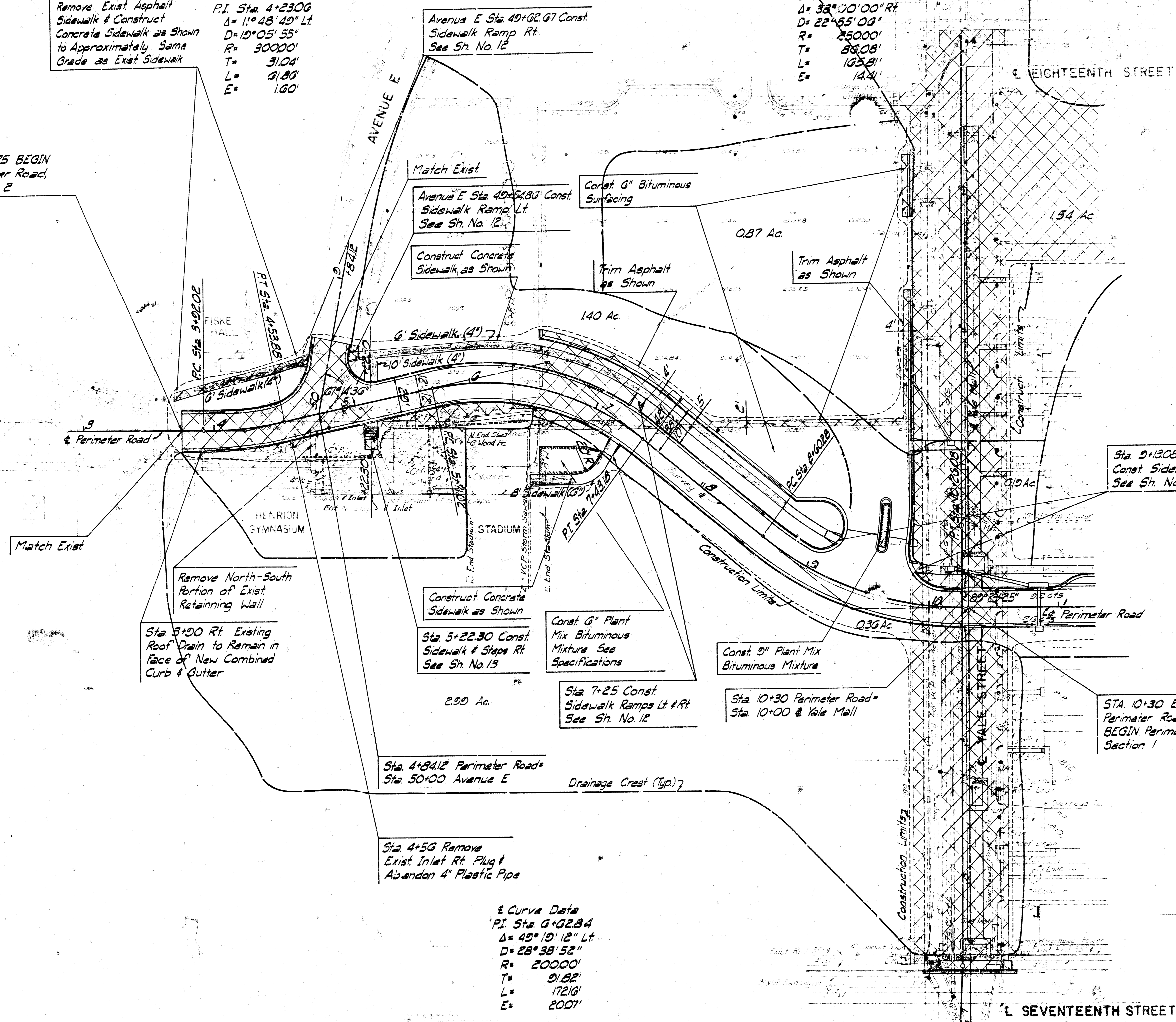
Curve Data
 P.I. Sta. 4+23.06
 $\Delta = 110^\circ 48' 49''$ Lt.
 $D = 10^\circ 05' 55''$
 $R = 30000'$
 $T = 31.04'$
 $L = 91.86'$
 $E = 1.60'$

Avenue E Sta. 40+02.67 Const
 Sidewalk Ramp Rt.
 See Sh. No. 12

Curve Data
 P.I. Sta. 9+44.36
 $\Delta = 32^\circ 00' 00''$ Rt.
 $D = 22^\circ 55' 00''$
 $R = 25000'$
 $T = 86.08'$
 $L = 103.81'$
 $E = 1.44'$

STA. 3+75 BEGIN
 Perimeter Road,
 Section 2

FAIRMOUNT AVENUE



SCALE: 1"=40'
 City of Wichita Datum

LEGEND

Concrete Pavement	[Symbol]
Bituminous Surfacing	[Symbol]
Removal	[Symbol]
Drainage Crests	[Symbol]
Sidewalk	[Symbol]
Plant Mix Bituminous Mixture	[Symbol]

UTILITIES

Water	City of Wichita
Gas	Gas Service Co
Telephone	SW Bell
Power	KG&E
San. Sewer	City of Wichita
Traffic Signals	City of Wichita

See Sh. No. 8 for Sanitary Sewer &
 Yale Mall Improvements.
 See Sh. No. 6 for Perimeter Road
 Section 1 Improvements.
 See Sh. No. 10 for Paving Plan

BM #4 N.W. Cor. Conc. Utility Vault
 40' Rt. Sta. 3+52 Elev. 210.18

Curve Data
 P.I. Sta. 6+32.84
 $\Delta = 49^\circ 10' 12''$ Lt.
 $D = 28^\circ 38' 52''$
 $R = 20000'$
 $T = 21.82'$
 $L = 172.16'$
 $E = 2.007'$

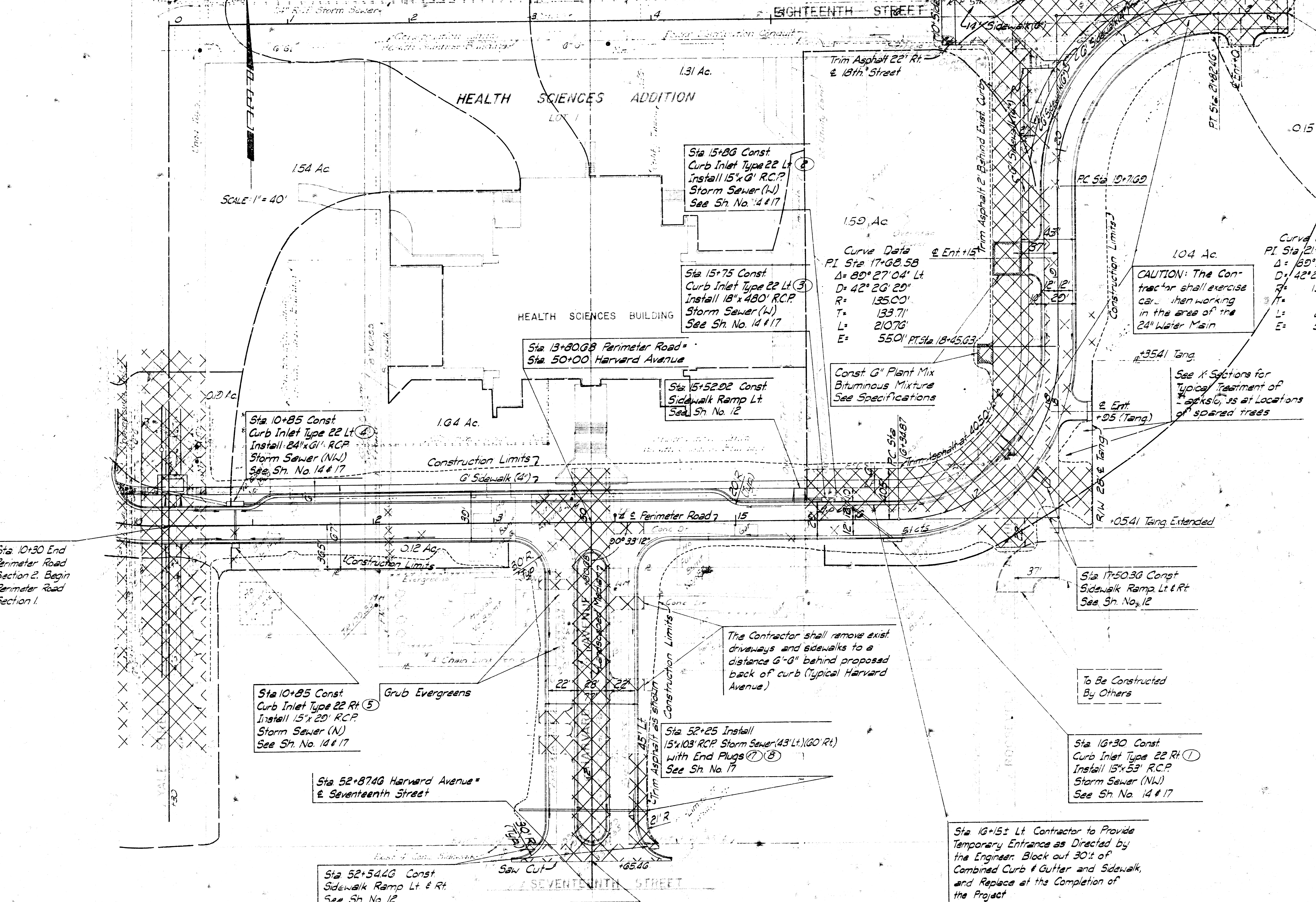
BM #3 Chis. "x" S.W. Cor. Conc. Utility Vault
 40' Lt. Sta. 9+70 Elev. 200.82

STREET AND STORM SEWER IMPROVEMENTS
PERIMETER ROAD SECTION 2

PROFESSIONAL ENGINEERING CONSULTANTS, P.A.
 ENGINEERS
 WICHITA, KANSAS

Designed by	Checked by
Drawn by	Date
	Job No.

2. Nail & Botticap in Combined Tele. & Light Pole
 3. Nail & Botticap in 15" dia Elm
 4. Nail & Botticap in 15" dia Elm
 PI Sta 17+05.4
 1. 12" Pipe @ PI
 2. NW Cor Newman Center
 3. Nail & Botticap in 24" Mulberry
 4. Nail & Botticap in Light Pole
 PI Sta 2+05.4
 1. Conc. Nail in Pavement @ PI
 2. No Parking Sign
 3. Nail & Botticap in Light Pole
 4. No Parking Sign



Align Edge of New Sidewalk with Edge of Exist Walk As Shown

SCALE: 1" = 40'

Curve Data
 PI Sta 21+05.41
 $\Delta = 60^\circ 27' 21''$ Rt
 $D = 42^\circ 20' 20''$
 $R = 135.00'$
 $T = 133.71'$
 $L = 210.76'$
 $E = 55.01'$ PT Sta 18+45.63

CAUTION: The Contractor shall exercise care when working in the area of the 24" Water Main

NOTES:
 Basements at the following addresses shall be backfilled as part of this Project. Backfill material shall be of a type similar to the parent material and shall be placed in lifts and compacted to 88% maximum density as determined by ASTM D-557. (See Specifications)
 822 Yale
 822 Harvard
 825 Harvard
 828 Yale
 Backfill material shall be approved by the Engineer

UTILITIES
 Water City of Wichita
 Gas Gas Service Co
 Telephone SW Bell
 Power K&EE
 San Sewer City of Wichita

See Sh. No. 9 for 18th Street Improvements
 See Sh. No. 11 for Paving Plan

STREET AND STORM SEWER IMPROVEMENTS
PERIMETER ROAD SECTION I

PROFESSIONAL ENGINEERING CONSULTANTS, P.A.
 ENGINEERS
 WICHITA, KANSAS

Designed by	Checked by
Drawn by	Date

Sta 10+30 End Perimeter Road Section 2. Begin Perimeter Road Section 1.

Sta 10+85 Const Curb Inlet Type 22 Lt (4)
 Install 24"x61" RCP Storm Sewer (NW)
 See Sh. No. 14 & 17

Sta 10+85 Const Curb Inlet Type 22 Rt (5)
 Install 15"x20" RCP Storm Sewer (N)
 See Sh. No. 14 & 17

Sta 52+87.40 Harvard Avenue & Seventeenth Street

Sta 52+54.40 Const Sidewalk Ramp Lt & Rt
 See Sh. No. 12

Sta 15+80 Const Curb Inlet Type 22 Lt (2)
 Install 15"x61" RCP Storm Sewer (W)
 See Sh. No. 14 & 17

Sta 15+75 Const Curb Inlet Type 22 Lt (3)
 Install 18"x480" RCP Storm Sewer (W)
 See Sh. No. 14 & 17

Sta 15+52.02 Const Sidewalk Ramp Lt
 See Sh. No. 12

Sta 52+25 Install 15"x103" RCP Storm Sewer (43" Lt) (60" Rt) with End Plugs (7) (8)
 See Sh. No. 17

Sta 17+50.30 Const Sidewalk Ramp Lt & Rt
 See Sh. No. 12

Sta 16+30 Const Curb Inlet Type 22 Rt (1)
 Install 15"x53" RCP Storm Sewer (NW)
 See Sh. No. 14 & 17

Sta 16+15 Lt Contractor to Provide Temporary Entrance as Directed by the Engineer. Block out 30' of Combined Curb & Gutter and Sidewalk, and Replace at the Completion of the Project

The Contractor shall remove exist driveways and sidewalks to a distance 6'-0" behind proposed back of curb (Typical Harvard Avenue)

BM #3 Chg. "B" SW Cor. Conc. Utility Vault 40' Lt. Sta 0+70 Elev 2101.6

BM #1 Chg. "B" NE Cor. Curb, North Planter East Side Library Elev. 252.7

BM #2 Fire Hydrant, Top SE Bolt with "X" 34' Lt. Sta 20+30 Elev 2142.0