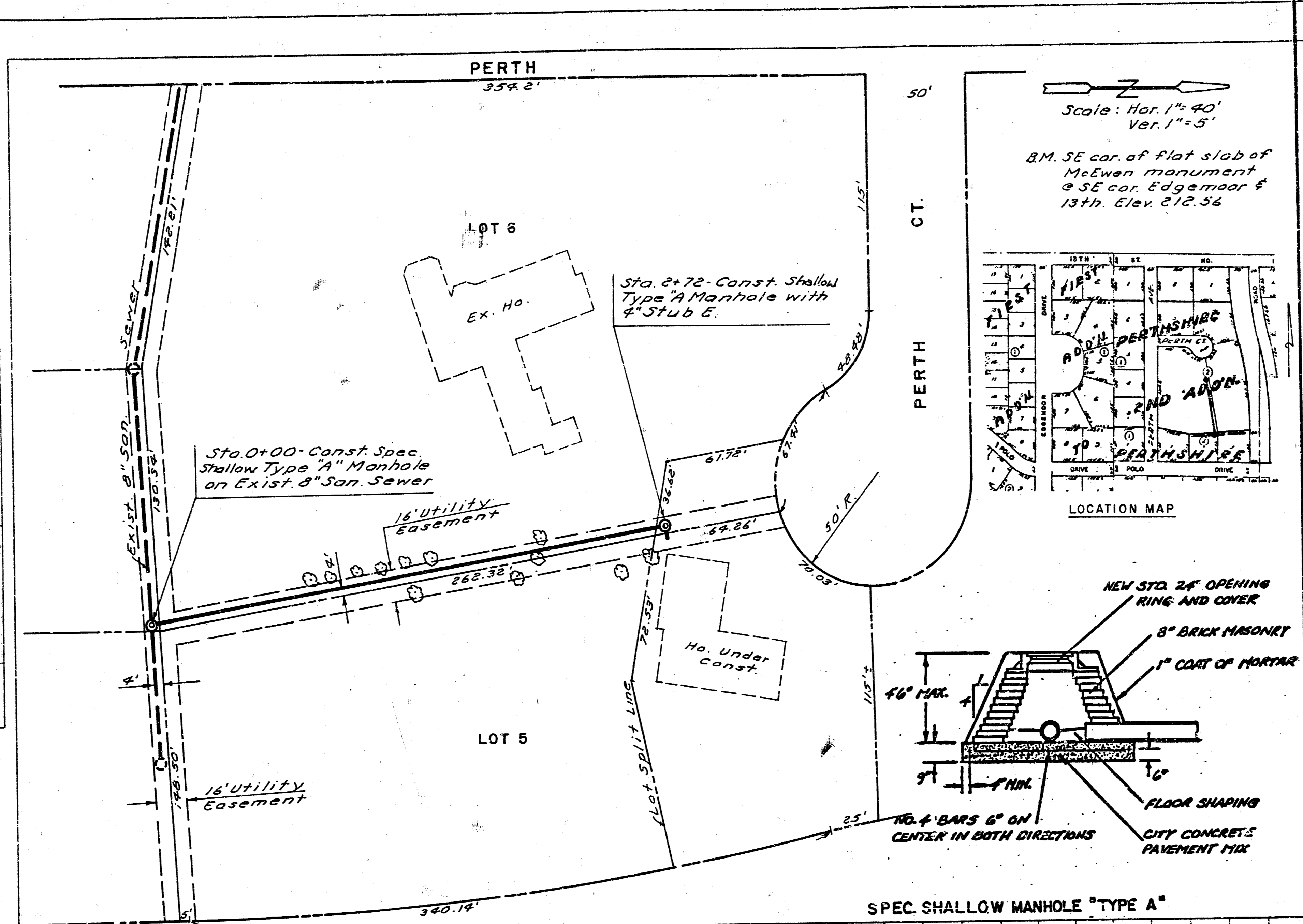
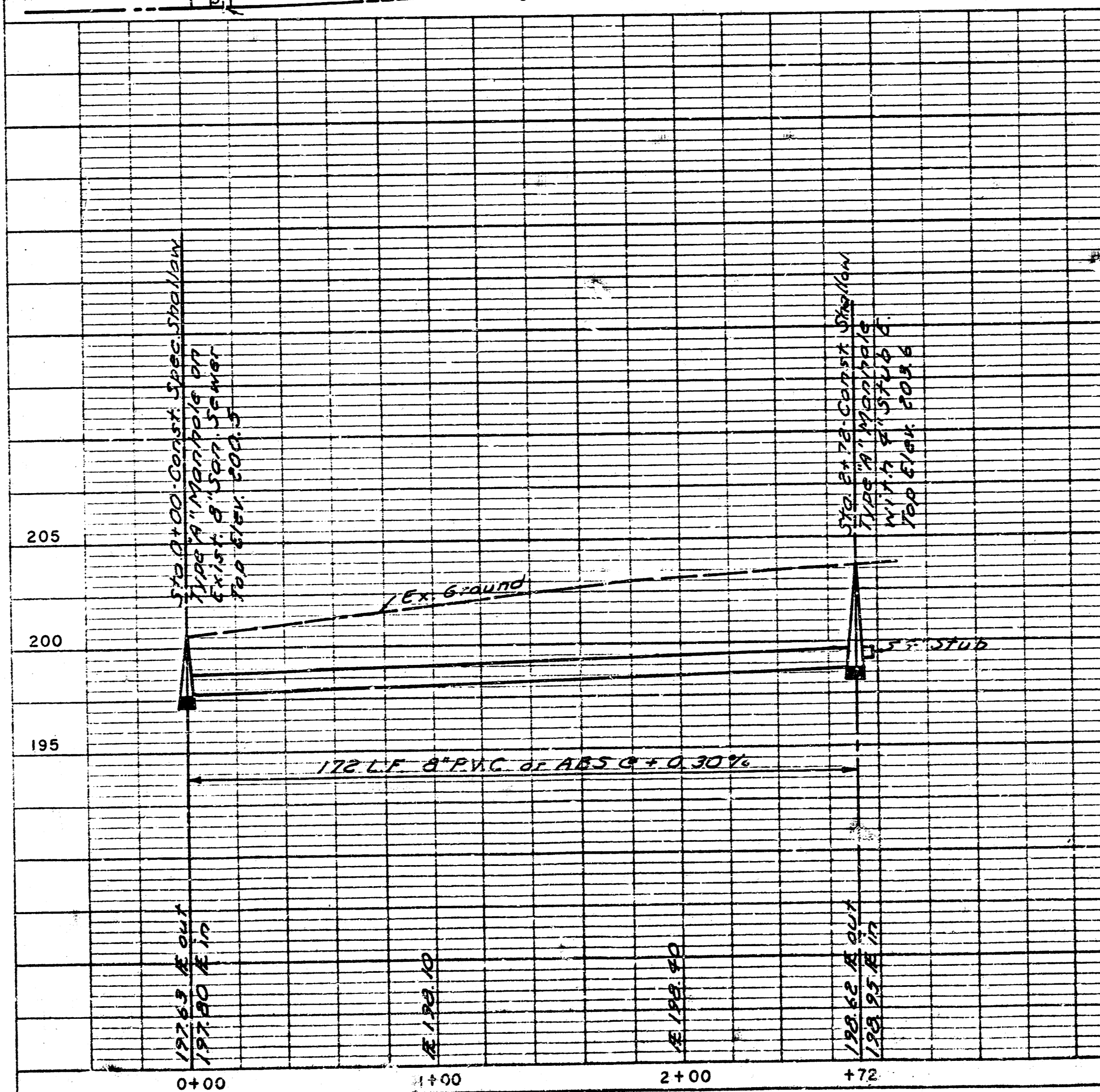


PLAN
 SHEET NO. 1
 DATE 8/1/84
 BY [Signature]
 CHECKED [Signature]
 APPROVED [Signature]
 TITLE PRIVATE SANITARY SEWER EXTENSION

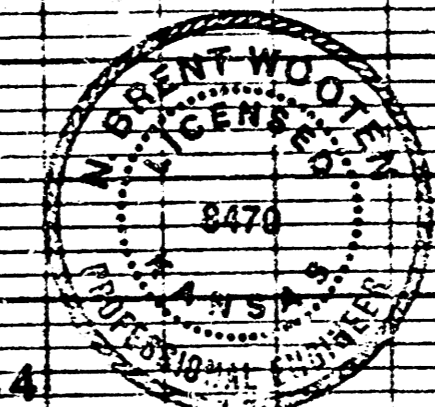


PROFILE
 SHEET NO. 1
 DATE 8/1/84
 BY [Signature]
 CHECKED [Signature]
 APPROVED [Signature]
 TITLE PRIVATE SANITARY SEWER EXTENSION



APPROVED AS NOTED
 By CITY ENGINEER OF WICHITA
 Sanitary Sewers [Signature]
 Storm Sewers
 Driveway Approaches

NOTE TO CONTRACTOR
 This project will be constructed under the supervision of the CITY ENGINEER and conforming to the SPECIFICATIONS of the CITY OF WICHITA. The CONTRACTOR will prepare that City of Wichita for all costs of inspection.



AUGUST 1984

PRIVATE SANITARY SEWER EXTENSION
 TO SERVE LOT SPLIT OF LOT 5, BLK. 2,
 PERTSHIRE SECOND ADDITION

CITY PROJ. NO. 858-46-24-80000-000-000-008

BAUGHMAN COMPANY, P.A.
 SURVEYING & ENGINEERING
 3120 S. W. 10th St. WICHITA, KANSAS 67211