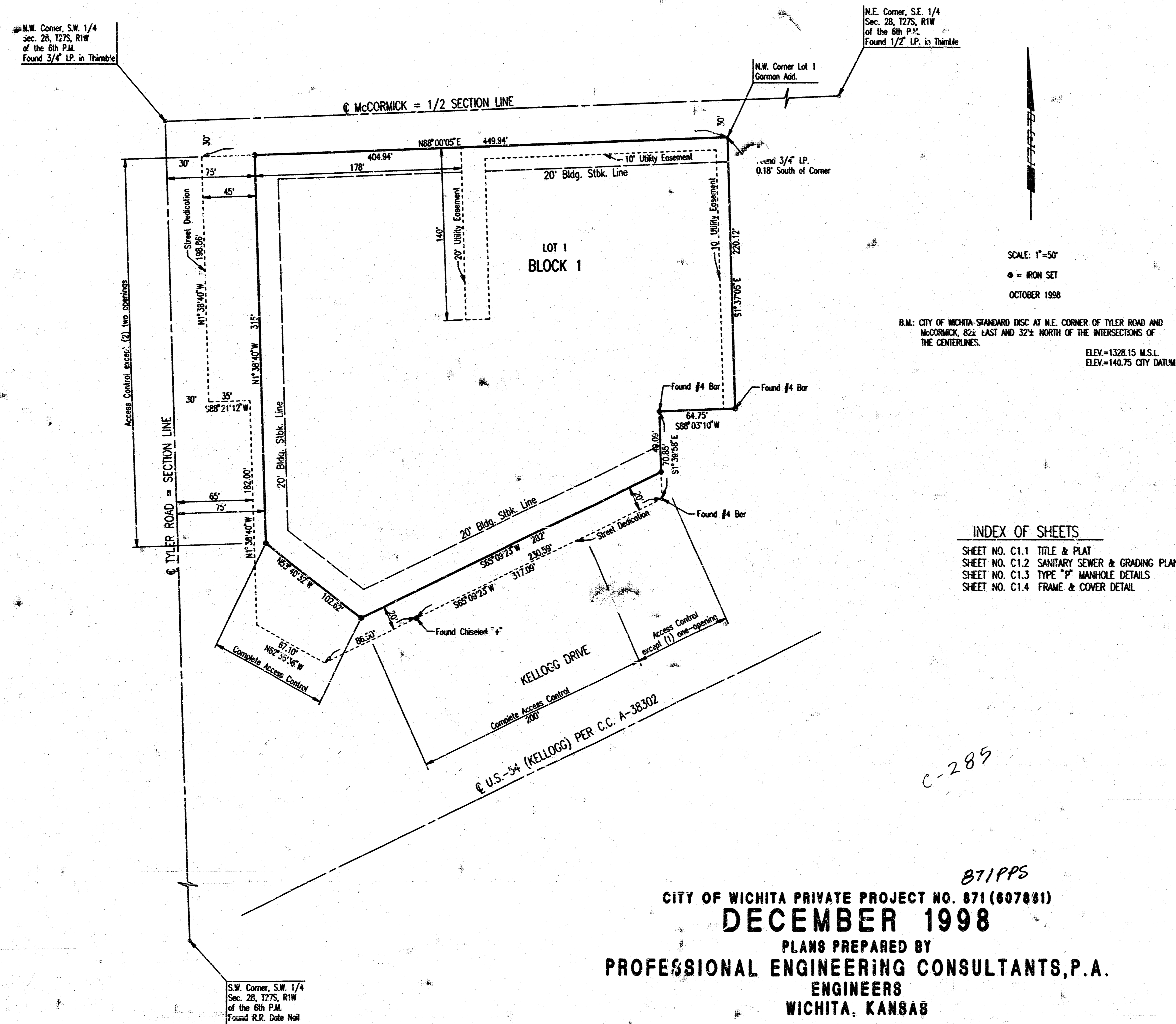


CONSTRUCTION PLANS FOR
PRIVATE SANITARY SEWER
 TO SERVE
PHILLIPS 66 KELLOGG AND TYLER ADDITION
 IN
THE CITY OF WICHITA,
 SEDGWICK COUNTY, KANSAS
 MICHAEL E. LINDBAK, P.E. - CITY ENGINEER



GENERAL NOTES

UNDERGROUND UTILITY SERVICE LINES AND OVERHEAD UTILITY POLE LINES ARE TO BE ADJUSTED AS NECESSARY BY OTHERS PRIOR TO CONSTRUCTION UNLESS THE PLANS SPECIFICALLY CALL FOR THEIR ADJUSTMENT BY THE CONTRACTOR. EXISTING UTILITIES AND THEIR LOCATION, AS SHOWN ON THE PLANS, REPRESENT THE BEST INFORMATION OBTAINABLE FOR DESIGN. LOCATION INFORMATION HAS BEEN OBTAINED FROM THE VARIOUS UTILITY COMPANIES AND IS EITHER FROM COMPANY RECORD DRAWINGS OR COMPANY PROVIDED FIELD LOCATIONS. THE CONTRACTOR WILL BE REQUIRED TO WORK AROUND EXISTING UTILITIES WITHIN THE RIGHT-OF-WAY WHICH DO NOT CONFLICT WITH PROPOSED CONSTRUCTION. CONTRACTOR SHALL SATISFY HIMSELF OF SUBSURFACE CONDITIONS PRIOR TO BIDDING.

TREES AND SHRUBS WHICH ARE IN DIRECT CONFLICT WITH PROPOSED NEW CONSTRUCTION SHALL BE REMOVED BY THE CONTRACTOR WITH THE OWNER'S APPROVAL. TREES AND SHRUBS WHICH ARE NOT IN DIRECT CONFLICT WITH PROPOSED NEW CONSTRUCTION SHALL BE SAVED AND PROTECTED FROM DAMAGE.

RUBBLE FROM THE REMOVAL OF MISCELLANEOUS STRUCTURES SHALL BE DISPOSED OF ON SITES TO BE PROVIDED BY THE CONTRACTOR AND APPROVED AS NOTED.

ALL DISPOSAL SITES MUST BE APPROVED BY THE KANSAS DEPARTMENT OF HEALTH AND ENVIRONMENT. MATERIAL EITHER STOCKPILED OR DISPOSED OF IN A FLOOD PLAIN WOULD REQUIRE A KANSAS STATE BOARD OF AGRICULTURE PERMIT. ANY MATERIAL DUMPED IN WATERS OF THE UNITED STATES OR WETLANDS IS SUBJECT TO U.S. CORPS OF ENGINEERS PERMITTING REGULATIONS. ANY MATERIAL BURIED OR STOCKPILED BEYOND APPROVED CONSTRUCTION LIMITS WOULD REQUIRE ADDITIONAL ARCHAEOLOGICAL INVESTIGATIONS UNLESS BURIED IN A PREVIOUSLY APPROVED BORROW LOCATION.

CONTRACTOR SHALL PROVIDE A MINIMUM FORTY-EIGHT (48) HOUR ADVANCE NOTICE (EXCLUDING WEEKENDS AND HOLIDAYS) PRIOR TO BEGINNING ANY EXCAVATION, TO KANSAS ONE-CALL SYSTEM, A UTILITY LOCATION SERVICE, AT (316) 687-2470 TO REQUEST THE FOLLOWING UTILITY COMPANIES TO LOCATE ALL EXISTING LINES WITHIN THE PROJECT AREA: K.G.E. GAS, PEOPLES NATURAL GAS, K.G.E. ELECTRIC, SOUTHWESTERN BELL TELEPHONE, MULTIMEDIA CABLEVISION, CITY OF WICHITA SEWER MAINTENANCE AND CITY OF WICHITA WATER DEPARTMENT.

THE CONTRACTOR SHALL BE RESPONSIBLE FOR PRESERVING PROPERTY IRONS. THE CONTRACTOR WILL BE REQUIRED TO RE-ESTABLISH ANY PROPERTY IRONS WHICH ARE DAMAGED OR DESTROYED BY HIS CONSTRUCTION OPERATIONS. SUCH IRONS SHALL BE RE-ESTABLISHED BY A LICENSED LAND SURVEYOR IN ACCORDANCE WITH STATE LAWS.

THE WATER DEPARTMENT SHALL FIELD LOCATE WATER VALVES ONE TIME DURING CONSTRUCTION WHEN REQUESTED BY THE CONTRACTOR. IT SHALL BE THE CONTRACTOR'S RESPONSIBILITY TO PRESERVE SUCH FIELD LOCATIONS DURING THE CONSTRUCTION PROCESS. WATER VALVES, WATER VALVE BOXES OR FIRE HYDRANTS DAMAGED DURING CONSTRUCTION SHALL BE REPAIRED BY THE CONTRACTOR AT HIS OWN EXPENSE.

ALL CONSTRUCTION AND MATERIALS FOR SANITARY SEWER CONSTRUCTION SHALL BE IN ACCORDANCE WITH CITY OF WICHITA STANDARD SPECIFICATIONS.

INDEX OF SHEETS

SHEET NO. C1.1	TITLE & PLAT
SHEET NO. C1.2	SANITARY SEWER & GRADING PLAN
SHEET NO. C1.3	TYPE "P" MANHOLE DETAILS
SHEET NO. C1.4	FRAME & COVER DETAIL



APPROVED AS NOTED
 BY CITY ENGINEER OF WICHITA

SANITARY SEWERS VRH 12/19/98
 STORM SEWERS _____
 DRIVEWAY APPROACHES _____
 WATER MAINS _____
 PAVING _____

*Booked
 C-285
 5-26-99
 RDL*

NOTE TO CONTRACTOR

INSPECTION AND TESTING FOR THIS PROJECT IS TO BE PROVIDED BY A LICENSED CONSULTING ENGINEERING FIRM CONTRACTED BY THE OWNER/DEVELOPER. SAID INSPECTION TO BE IN ACCORDANCE WITH THE CITY OF WICHITA STANDARD CONSTRUCTION ENGINEERING PRACTICES AND CERTIFIED BY A LICENSED PROFESSIONAL ENGINEER. NO WORK SHALL BE PERFORMED IN DEDICATED EASEMENTS OR PUBLIC RIGHT-OF-WAY BY THE CONTRACTOR UNTIL SUCH INSPECTION IS ARRANGED FOR AND REQUIRED BONDS HAVE BEEN SUBMITTED TO AND APPROVED BY THE CITY NOR SHALL ANY WORK BE COMMENCED IN DEDICATED EASEMENTS OR PUBLIC RIGHT-OF-WAY WITHOUT WRITTEN AUTHORIZATION BY THE CITY ENGINEER. IMPROVEMENTS PERFORMED UNDER THIS PROJECT SHALL NOT BE ACCEPTED BY THE CITY UNTIL ALL APPLICABLE DOCUMENTATION HAS BEEN SUBMITTED TO THE CITY ENGINEER. THIS MAY INCLUDE: AS-BUILT DRAWINGS, INSPECTION LOGS, TEST DOCUMENTATION, TV TAPES, AND A CERTIFICATE OF COMPLETION. THE ABOVE SHALL BE PERFORMED BY THE CONSULTING FIRM CONTRACTED TO INSPECT THIS PROJECT.

CITY OF WICHITA PRIVATE PROJECT NO. 871 (607861)
DECEMBER 1998
 PLANS PREPARED BY
PROFESSIONAL ENGINEERING CONSULTANTS, P.A.
 ENGINEERS
 WICHITA, KANSAS

Wickham Jarvi and Warman
 ARCHITECTS
 1829 SWIFT WHITE BBS
 WICHITA, KANSAS 67202
 (316) 414-2725
 FAX (316) 414-0290
 wjwarchitect.com

PHILLIPS 66
Kellogg & Tyler Road
Wichita, KS



REVISIONS		
NUMBER	BY	DATE

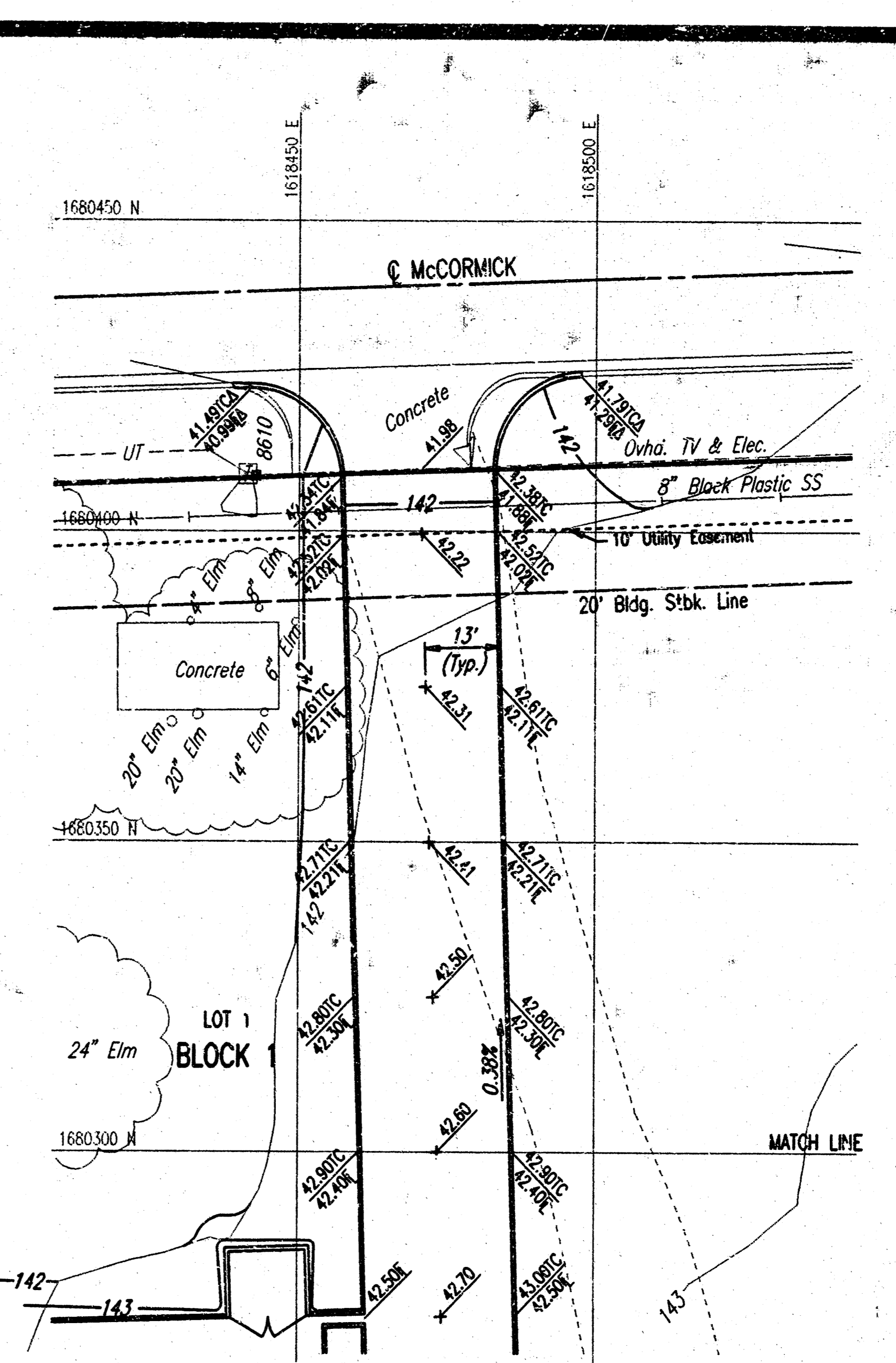
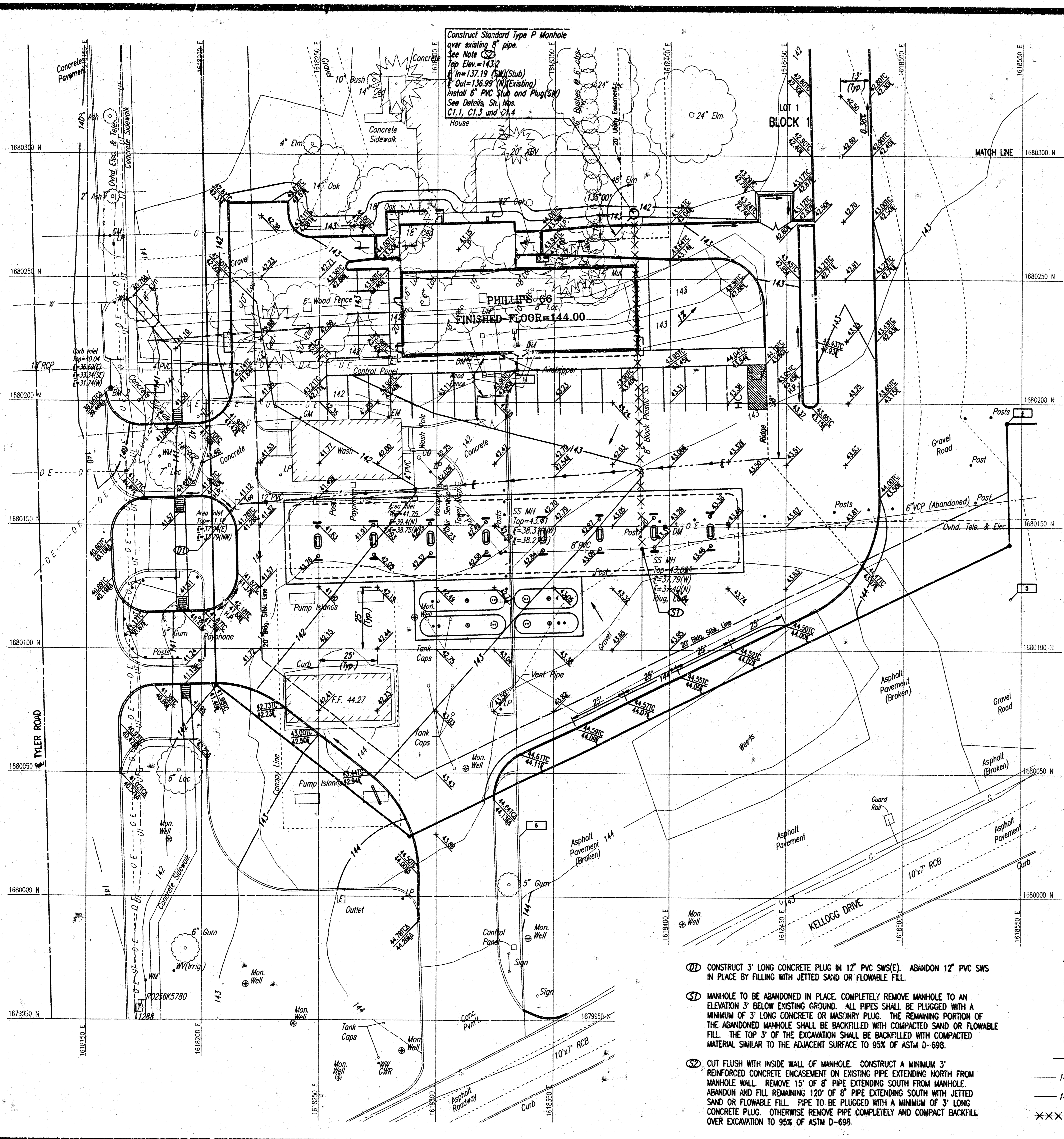
DATE: DEC 98

SHEET
C1.1

JOB NUMBER
2861-07

SCALE: 1"=50.00
 DATE: 12-08-1998 01:09:22 pm

DATE: 1-20-00
 SCALE: 1"=20'
 12-08-1998 01:10:29 pm
 C:\USERS\SS369\DD\SITE PLAN



BM 2: CHISELED "d" IN TOP OF CURB S.W. CORNER CURB INLET ON EAST SIDE TYLER WEST OF CAR WASH. ELEV.=140.08

BM 3: CHISELED "d" IN TOP OF CURB AT WEST END OF MEDIAN BETWEEN WEST BOUND KELLOGG AND KELLOGG DRIVE ADJACENT TO S.E. ENTRANCE TO PHILLIPS 66. ELEV.=.43.40

NOTES

- VARIOUS UTILITY APPURTENANCES AND CONNECTIONS MAY NEED TO BE ALTERED AND/OR ADJUSTED TO MATCH GRADING PLAN.
- SEE ARCHITECTURAL DRAWINGS FOR GEOMETRIC LAYOUT AND PAVING DETAILS.

SCALE: 1"=20'

- ① CONSTRUCT 3' LONG CONCRETE PLUG IN 12" PVC SWS(E). ABANDON 12" PVC SWS IN PLACE BY FILLING WITH JETTED SAND OR FLOWABLE FILL.
- ② MANHOLE TO BE ABANDONED IN PLACE. COMPLETELY REMOVE MANHOLE TO AN ELEVATION 3' BELOW EXISTING GROUND. ALL PIPES SHALL BE PLUGGED WITH A MINIMUM OF 3' LONG CONCRETE OR MASONRY PLUG. THE REMAINING PORTION OF THE ABANDONED MANHOLE SHALL BE BACKFILLED WITH COMPACTED SAND OR FLOWABLE FILL. THE TOP 3' OF THE EXCAVATION SHALL BE BACKFILLED WITH COMPACTED MATERIAL SIMILAR TO THE ADJACENT SURFACE TO 95% OF ASTM D-698.
- ③ CUT FLUSH WITH INSIDE WALL OF MANHOLE. CONSTRUCT A MINIMUM 3' REINFORCED CONCRETE ENCASEMENT ON EXISTING PIPE EXTENDING NORTH FROM MANHOLE WALL. REMOVE 15' OF 8" PIPE EXTENDING SOUTH FROM MANHOLE. ABANDON AND FILL REMAINING 120' OF 8" PIPE EXTENDING SOUTH WITH JETTED SAND OR FLOWABLE FILL. PIPE TO BE PLUGGED WITH A MINIMUM OF 3' LONG CONCRETE PLUG. OTHERWISE REMOVE PIPE COMPLETELY AND COMPACT BACKFILL OVER EXCAVATION TO 95% OF ASTM D-698.

- LEGEND**
- △ MATCH EXISTING ELEVATION
 - H.P. HIGH POINT
 - L.P. LOW POINT
 - TC TOP OF CURB ELEVATION
 - E FLOWLINE ELEVATION
 - FLOW DIRECTION
 - 140 — EXISTING CONTOUR
 - 140 — PROPOSED CONTOUR
 - XXXXXX EXISTING SANITARY SEWER TO BE ABANDONED/REMOVED

PHILLIPS

POINT	CONTROL POINTS		DESCRIPTION
	NORTH	EAST	
4	1,680,191.9600	1,618,543.3400	#4 Bar (Baughman)
5	1,680,121.1400	1,618,545.4200	#4 Bar (Baughman)
6	1,680,024.2800	1,618,336.1500	Chiseled "+"
9	1,680,200.1500	1,618,172.7100	#4 Bar (Baughman)
11	1,680,204.7000	1,618,330.9900	#4 Bar (Baughman)

□ = CONTROL POINT

Wickham Jarvi and Warman
ARCHITECTS

1828 SWIFT, SUITE 305
NORTH CHICAGO CITY
MUSKOGEE, OKLAHOMA

(918) 474-2225
FAX: (918) 474-1414
http://www.wjw.com

PHILLIPS 66
Kellogg & Tyler Road
Wichita, KS

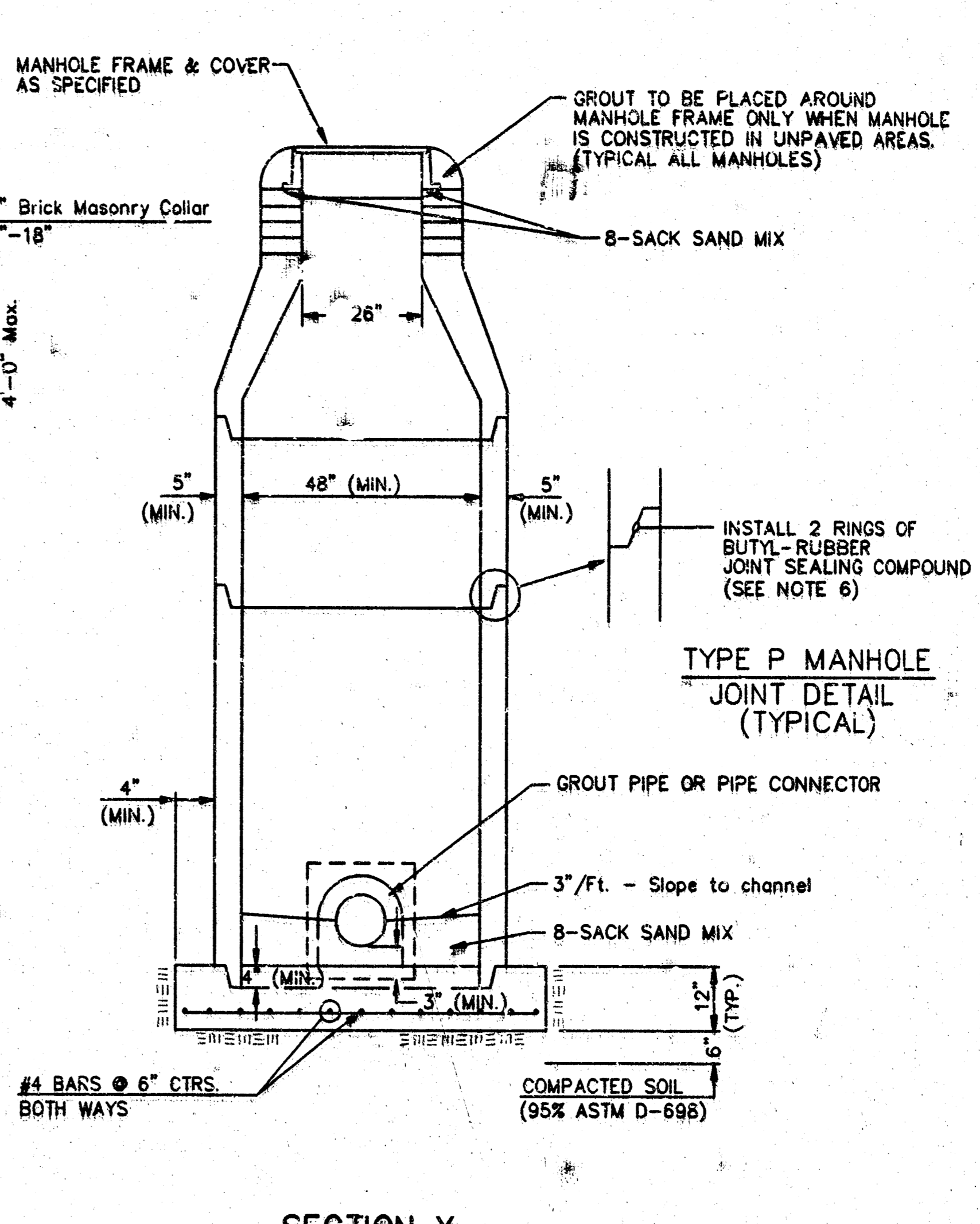
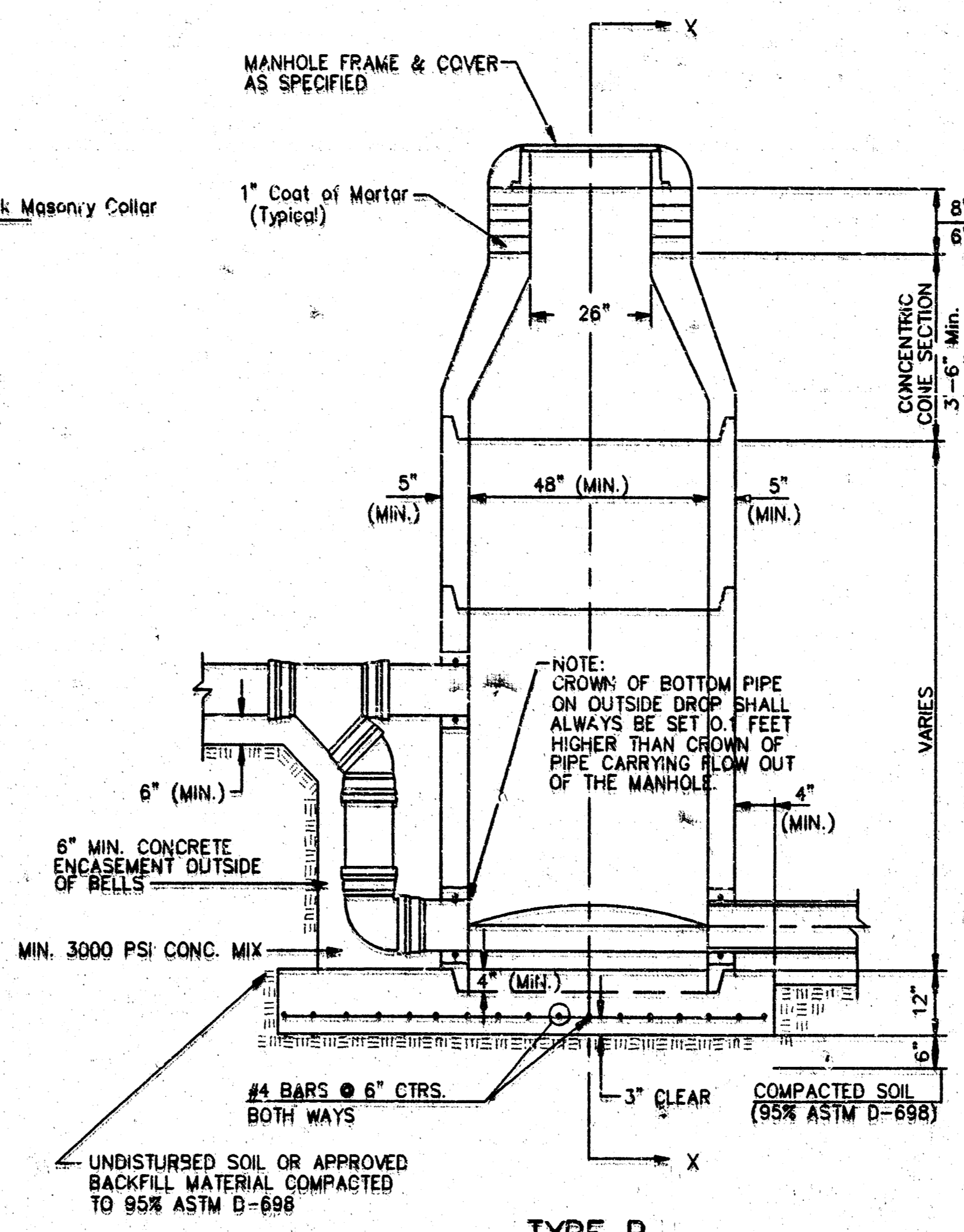
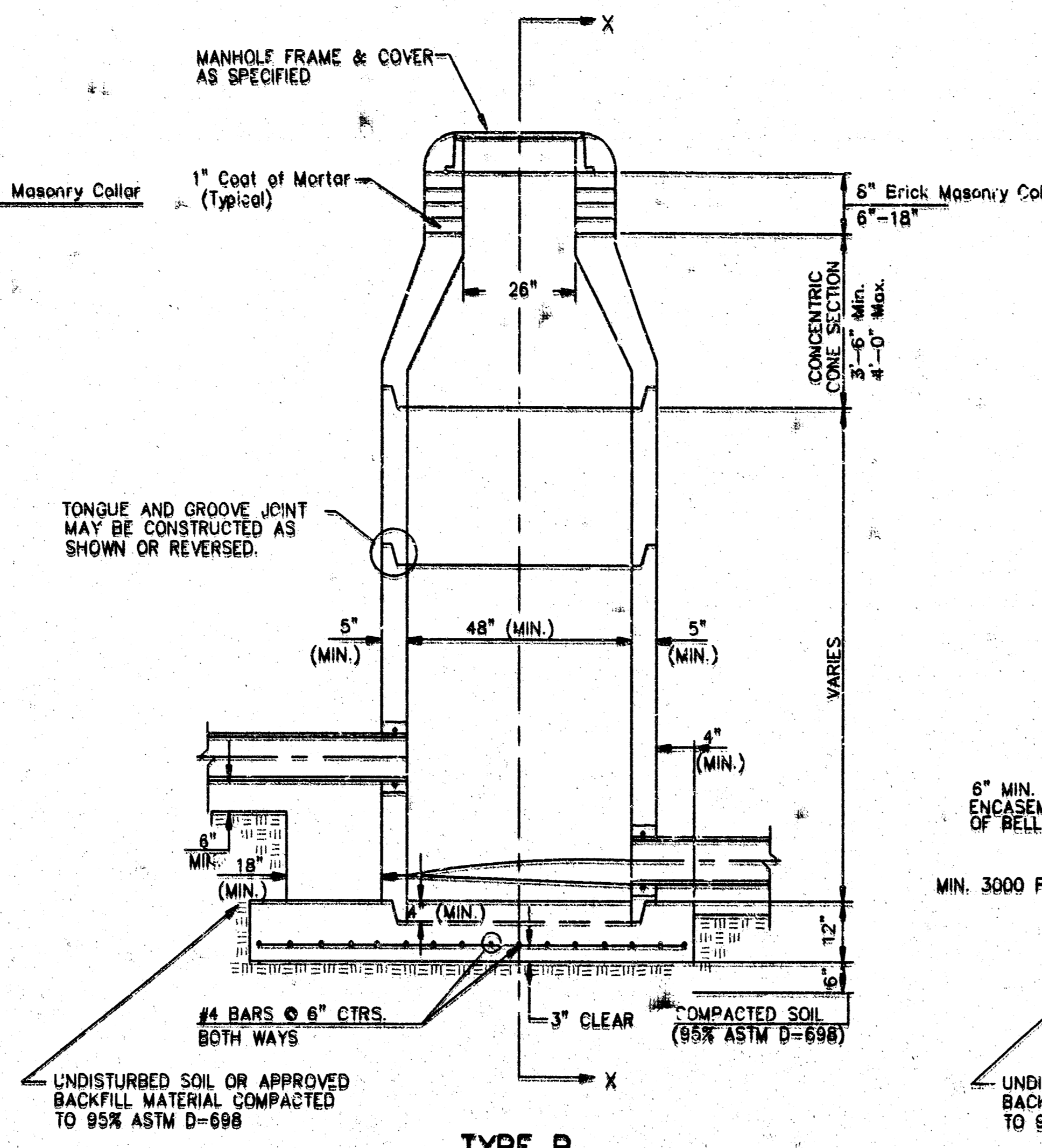
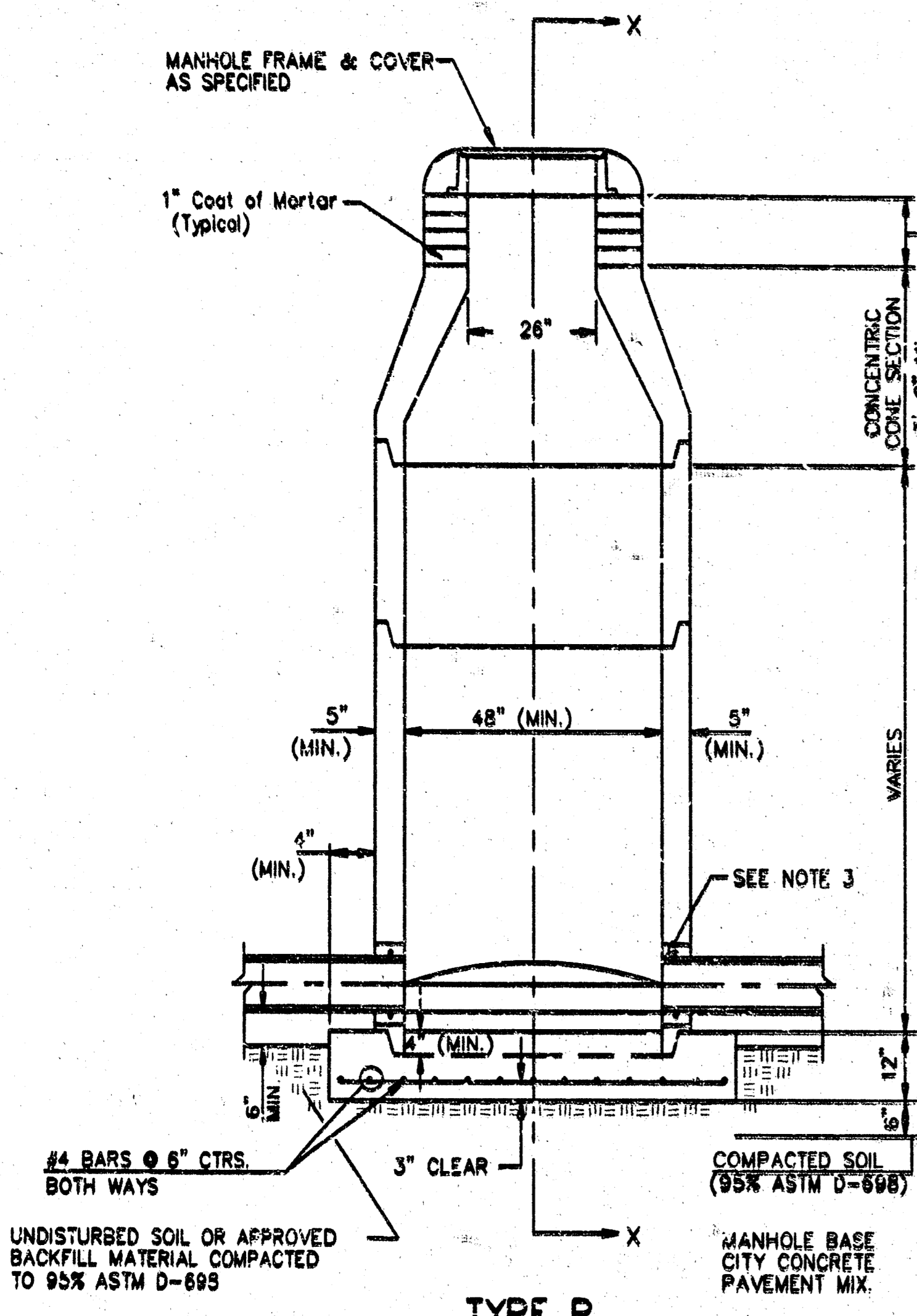
REVISION
NUMBER BY DATE

DATE: DEC 1998

SHEET
C1.2

JOB NUMBER
2561-97

SEWER APPURTENANCES DETAILS



GENERAL NOTES

- PRECAST MANHOLE NOTES
- ALL PRECAST CONCRETE MANHOLE SECTIONS SHALL CONFORM TO THE LATEST REVISIONS OF A.S.T.M. C478 AS MODIFIED BY THE SPECIFICATIONS.
 - NON-SHRINK GROUT SHALL BE NON-METALLIC TYPE.
 - APPROVED FLEXIBLE WATERSTOP GASKETS SHALL BE INSTALLED TO JOIN THE SEWER TO THE MANHOLE WALL WHEN A.B.S. COMPOSITE PIPE OR P.V.C. PIPE IS USED. FOR OTHER TYPES OF PIPE THE SEWER SHALL BE GROUTED IN PLACE WITH NON-SHRINK GROUT. THE SEWER PIPE SHALL BE SUPPORTED WITH CONCRETE ENCASEMENT A MINIMUM OF 3 FEET FROM THE MANHOLE WALL AND TO THE FIRST JOINT FOR V.C.P. SUCH THAT THE JOINT REMAINS FLEXIBLE.
 - ALL INSIDE SURFACES OF THE CONCRETE MANHOLE WHICH WOULD BE EXPOSED TO SEWER GAS SHALL BE COATED WITH 2 COATS INEMEC SERIES 86 HI-BUILD EPOXYLINE, DRY THICKNESS OF 8 MILS (MIN.)
 - EXTERIOR MANHOLE WALLS SHALL BE COATED WITH 1 COAT MOBILARMA 633 BITUMINOUS COATING.
 - JOINT SEALING COMPOUND SHALL BE KENT SEAL NO. 2 OR APPROVED EQUAL.
 - PRECAST MANHOLES SHALL BE SET AT LEAST 4 INCHES INTO THE MANHOLE BASE.
 - TOP OF MANHOLE FLOOR SLAB SHALL BE AT LEAST 3 INCHES BELOW THE FLOW LINE OF THE OUTLET PIPE TO INSURE SUFFICIENT MINIMUM THICKNESS OF SHAPED INVERT.
 - LIFTING HOLES SHALL BE FILLED WITH NON-SHRINK GROUT AND THE INTERIOR SURFACE COATED AS SPECIFIED.
 - MORTAR USED IN MASONRY CONSTRUCTION SHALL CONTAIN 8 BAGS OF CEMENT PER CUBIC YARD. CONCRETE USED IN MANHOLE BASES SHALL CONFORM TO THE REQUIREMENTS OF CONCRETE FOR CONCRETE PAVEMENT CONSTRUCTION AS SPECIFIED IN THE CITY STANDARD PAVING SPECIFICATIONS USING CITY CONCRETE PAVEMENT MIX WITHOUT AIR ENTRAINING ADMIXTURE. MORTAR SHALL BE PLACED AROUND THE MANHOLE RING AS SHOWN IN THE DRAWINGS WHEN MANHOLES ARE CONSTRUCTED IN UNPAVED AREAS. MANHOLES CONSTRUCTED WHERE PIPE SIZES ARE SMALLER THAN 24" SHALL HAVE AN INSIDE DIAMETER OF 3". MANHOLES CONSTRUCTED WHERE PIPE SIZES ARE 24" OR LARGER SHALL HAVE AN INSIDE DIAMETER OF 5". COMPLETED MANHOLE SHALL BE WITHOUT LEAKS AND WATER TIGHT.

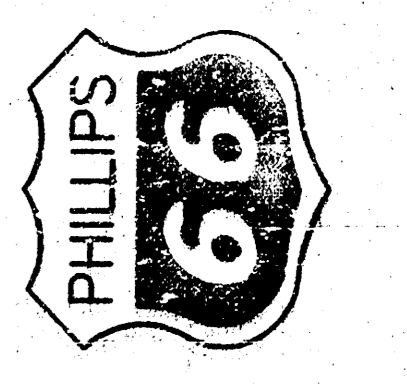
- REINFORCING STEEL SHALL BE INSTALLED IN THE MANHOLE WALLS AND SHALL CONSIST OF NO. 4 BARS PLACED ON 6" CENTERS IN BOTH DIRECTIONS. THE MANHOLE BASE REINFORCEMENT SHALL BE PLACED AT LEAST 3" ABOVE THE BOTTOM OF THE MANHOLE BASE. ALL COSTS FOR FURNISHING AND INSTALLING REINFORCING STEEL SHALL BE INCLUDED IN THE UNIT PRICE BID FOR THE MANHOLE.
- OPENINGS SHALL BE CUT INTO THE MANHOLE WALL WHEN OUTSIDE DROPS ARE CONSTRUCTED ON EXISTING MANHOLES. SUCH OPENINGS CUT INTO EXISTING MANHOLES SHALL BE AS SMALL AS PRACTICAL TO FACILITATE INSTALLING AND GROUTING THE NEW PIPE IN PLACE. WATERSTOP GASKETS SHALL BE USED WITH P.V.C. AND A.B.S. COMPOSITE PIPE. THE NEW PIPE SHALL BE GROUTED INTO THE OPENING USING AN APPROVED NONSHRINK GROUT FOR THE FULL MANHOLE WALL THICKNESS. THE EXTERIOR OF THE COMPLETED CONNECTION SHALL BE SEALED WITH AN APPROVED BITUMINOUS COATING SUCH THAT THE CONNECTION WILL BE WATER TIGHT. FLOOR OF MANHOLE SHALL BE MODIFIED TO FORM NEW FLOW CHANNEL FOR THE NEW CONNECTION AS INDICATED BY THE DRAWING. THIS WORK INCLUDING MODIFICATION OF MANHOLE FLOOR, SHALL BE PAID FOR AT THE UNIT PRICE BID FOR OUTSIDE DROP STACK CONSTRUCTED ON EXISTING MANHOLE.
- THE FLOORS OF ALL MANHOLES SHALL BE SHAPED WITH FLOW CHANNELS SUCH THAT THE MANHOLES WILL BE SELF-CLEANING AND FREE OF AREAS WHERE SOLIDS COULD BE DEPOSITED AS SEWAGE FLOWS THROUGH THE MANHOLE FROM ALL INLET PIPES TO THE OUTLET PIPE. FLOW CHANNELS SHALL BE FORMED TO MATCH THE BOTTOM HALVES OF THE INFLOWING PIPES AND THE OUTFLOWING PIPE AS SHOWN BY THE DRAWINGS EXCEPT FOR INSIDE DROP MANHOLES. FLOW CHANNELS FOR INSIDE DROP MANHOLES SHALL BE CONSTRUCTED AS INDICATED BY THE DRAWING. MANHOLE FLOORS SHALL HAVE SLOPES OF 1/8 INCHES PER FOOT IN THE AREAS OUTSIDE OF THE FLOW CHANNELS SLOPED TOWARD THE FLOW CHANNELS. PIPES LAID THROUGH MANHOLES SHALL HAVE THE TOP HALF REMOVED TO HEAT LINES FOR THE FULL INSIDE DIAMETER MANHOLE. MANHOLE FLOORS SHALL THEN BE SHAPED AROUND THE BOTTOM HALF OF THE PIPE WHICH FORMS THE FLOW CHANNEL.
- PIPES INSTALLED WITHIN THE EXCAVATION MADE FOR THE MANHOLE SHALL BE CRADLED WITH CONCRETE TO THE LIMITS OF THE MANHOLE EXCAVATION. WHEN CLAY PIPE IS USED, THE CRADLE SHALL EXTEND TO THE FIRST JOINT OUTSIDE THE MANHOLE. THE CRADLE SHALL BE TERMINATED AT THE CLAY PIPE JOINT IN A MANNER WHICH WILL MAINTAIN THE FLEXIBILITY OF THE JOINT. COST OF CRADLE WITHIN MANHOLE EXCAVATION OR TO CLAY PIPE JOINTS ADJACENT TO MANHOLE SHALL BE INCLUDED IN THE UNIT PRICE BID FOR THE MANHOLE.

- MANHOLE COVER CASTINGS AND MANHOLE FRAME CASTINGS SHALL CONFORM TO THE REQUIREMENTS AS INDICATED IN THE STANDARD SPECIFICATIONS AND AS SHOWN IN THE STANDARD DETAIL DRAWING.
- THE VERTICAL DROP IN INSIDE DROP MANHOLES SHALL NOT EXCEED 2' FOR INFLOWING PIPES SIZED 12" OR SMALLER AND 2' FOR INFLOWING PIPES LARGER THAN 12". THE CROWNS OF INFLOWING PIPES SHALL NEVER BE SET LOWER THAN THE CROWN OF THE OUTFLOWING PIPE.
- STANDARD MANHOLES AND STANDARD INSIDE DROP MANHOLES SHALL BE BID AS STANDARD MANHOLES FOR THE TYPE AND DIAMETER INDICATED. OUTSIDE DROP MANHOLES SHALL BE BID AS STANDARD OUTSIDE DROP MANHOLES FOR THE TYPE AND DIAMETER INDICATED. ALL MANHOLE DIAMETERS WILL BE 4' UNLESS INDICATED OTHERWISE.
- A BRICK MASONRY COLLAR SHALL BE INSTALLED BETWEEN THE CAST IRON FRAME AND THE CONCENTRIC CONE. THE COLLAR WILL HAVE 8" WALLS AND A VERTICAL HEIGHT OF 6" MINIMUM AND 18" MAXIMUM. A 1" COAT OF MORTAR WILL BE PLASTERED ON THE OUTSIDE OF THE COLLAR. THE USE OF PRE-CAST CONCRETE SPACERS FOR MANHOLE TOP ADJUSTMENT IS ALSO ALLOWED.

Wickham Jarvi and Warman
ARCHITECTS

1023 SHIFFT, SUITE 209
NORTH KANSAS CITY
MISSOURI 64116
HYPOCORNE@comcast.com

PHILLIPS 66
Kellogg & Tyler Road
Wichita, KS



REVISIONS

NUMBER	BY	DATE

DATE: DEC 48

SHEET
C1.3

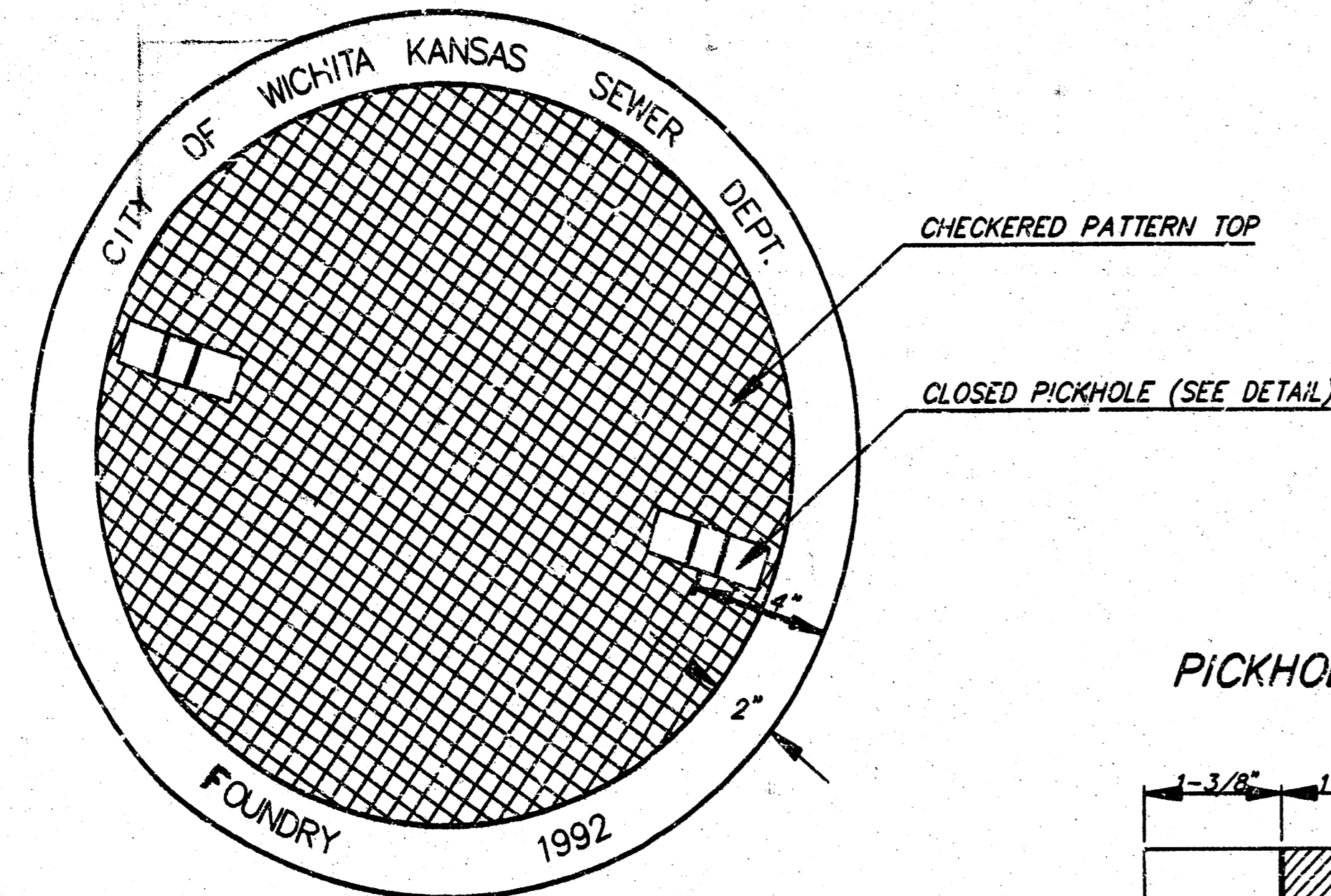
JOB NUMBER
2661-07

100-1998 01:11:18 pm

MANHOLE FRAME AND COVER DETAIL

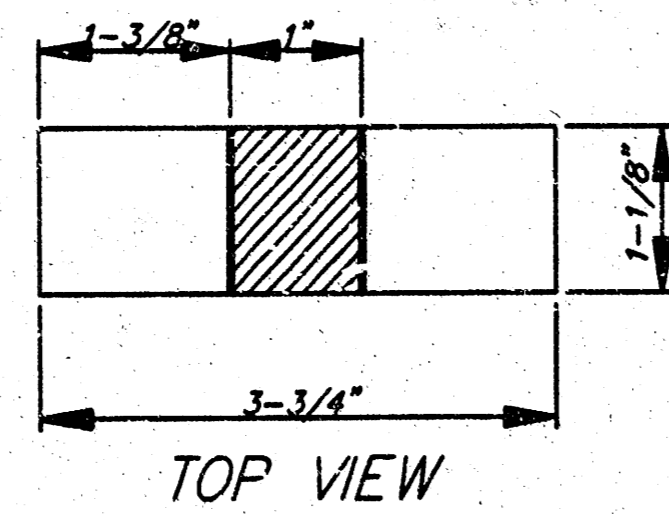
ADOPTED AS STANDARD DESIGN BY
CITY OF WICHITA, KANSAS

MANHOLE COVER
Weight = 180 Lbs.

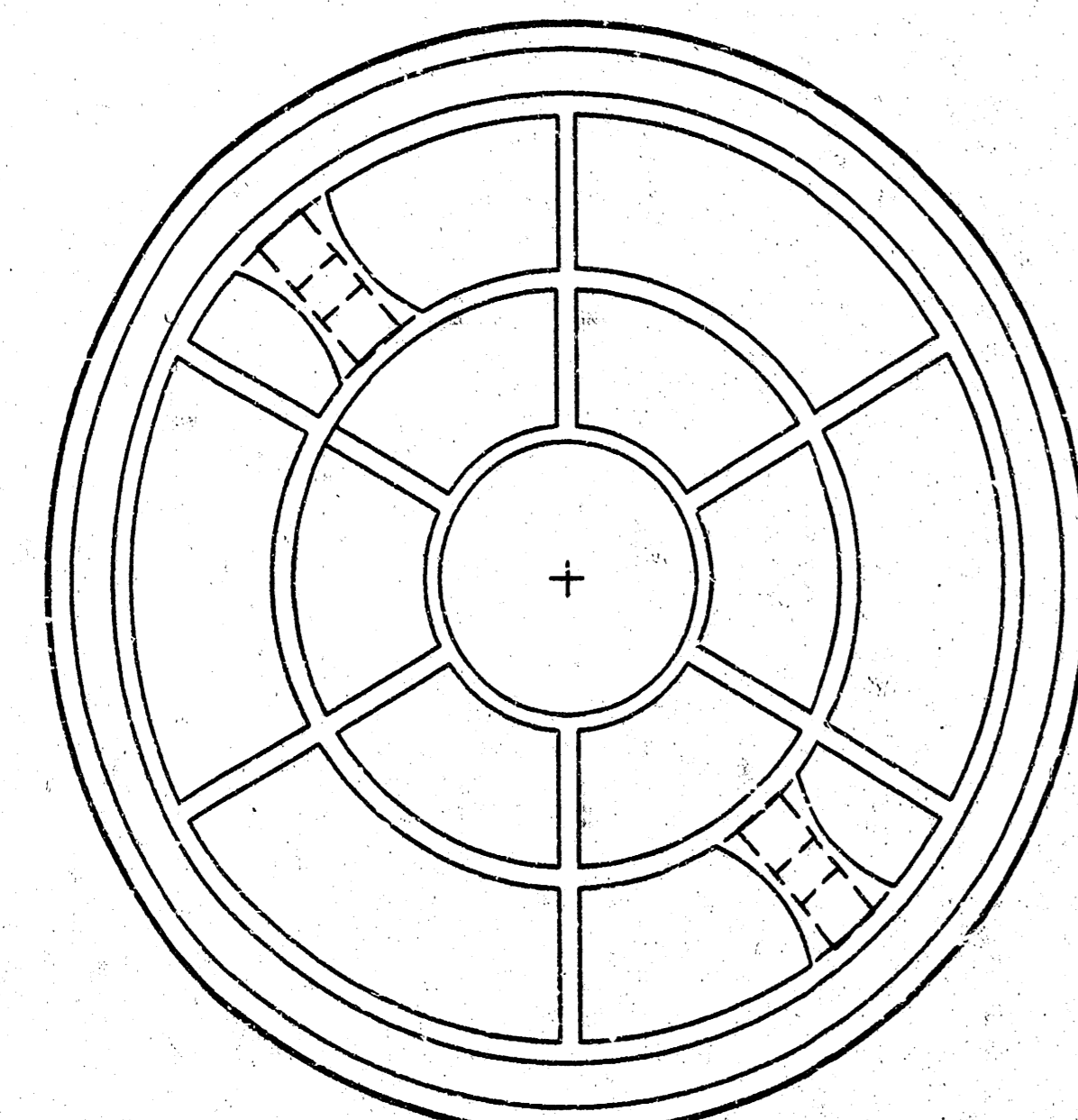


TOP VIEW

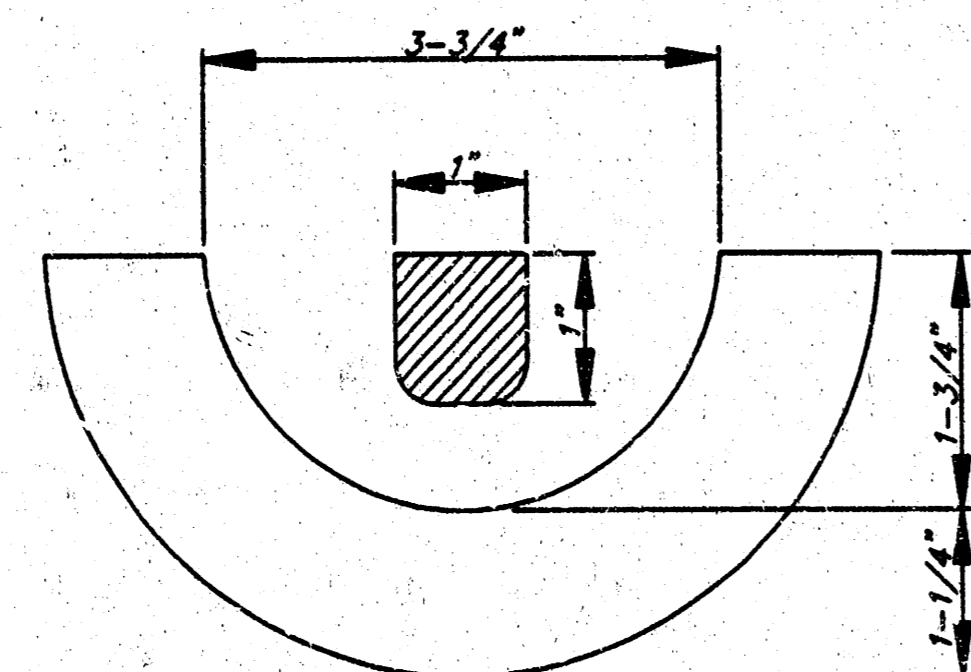
PICKHOLE DETAIL



TOP VIEW

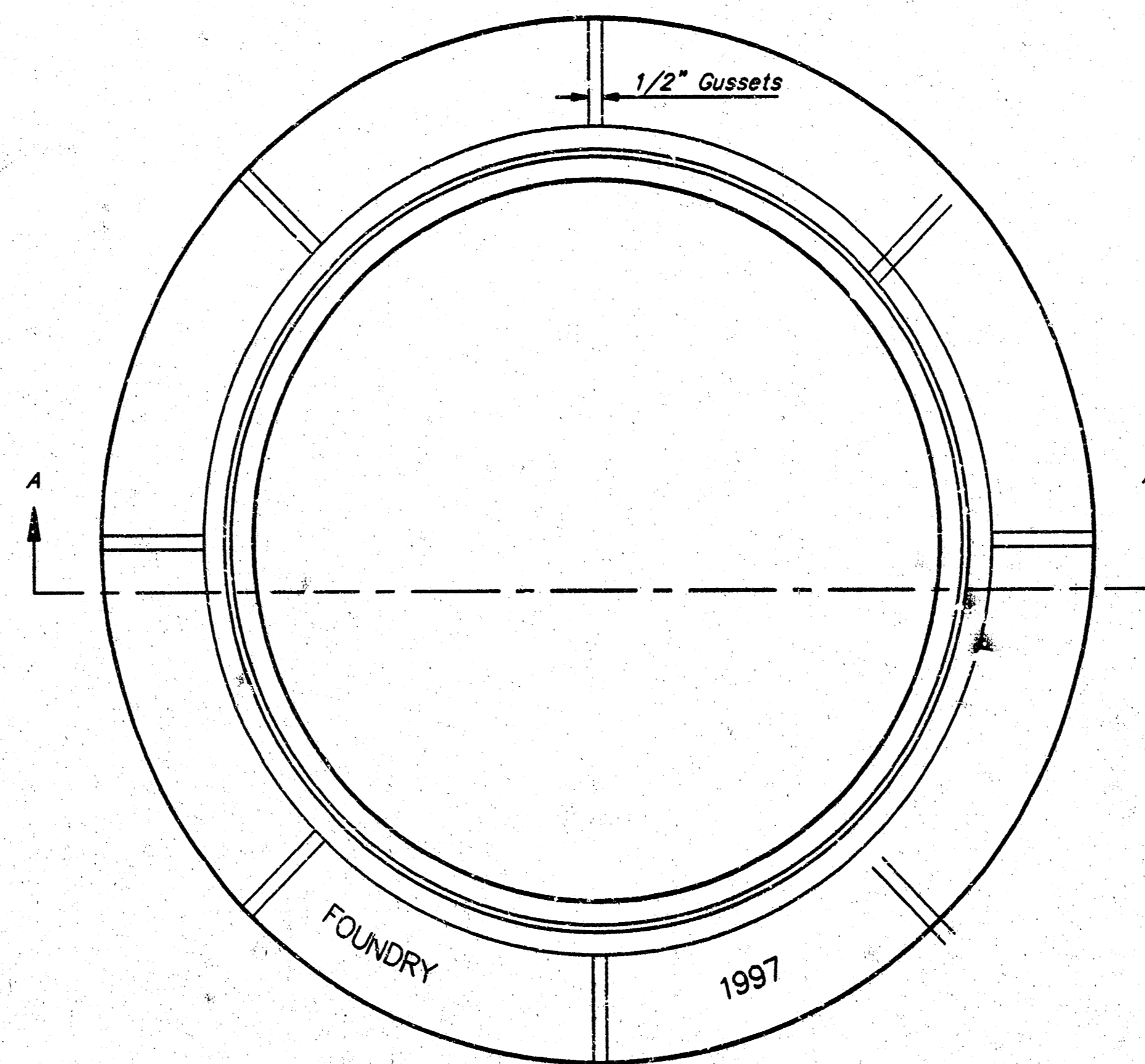


BOTTOM VIEW

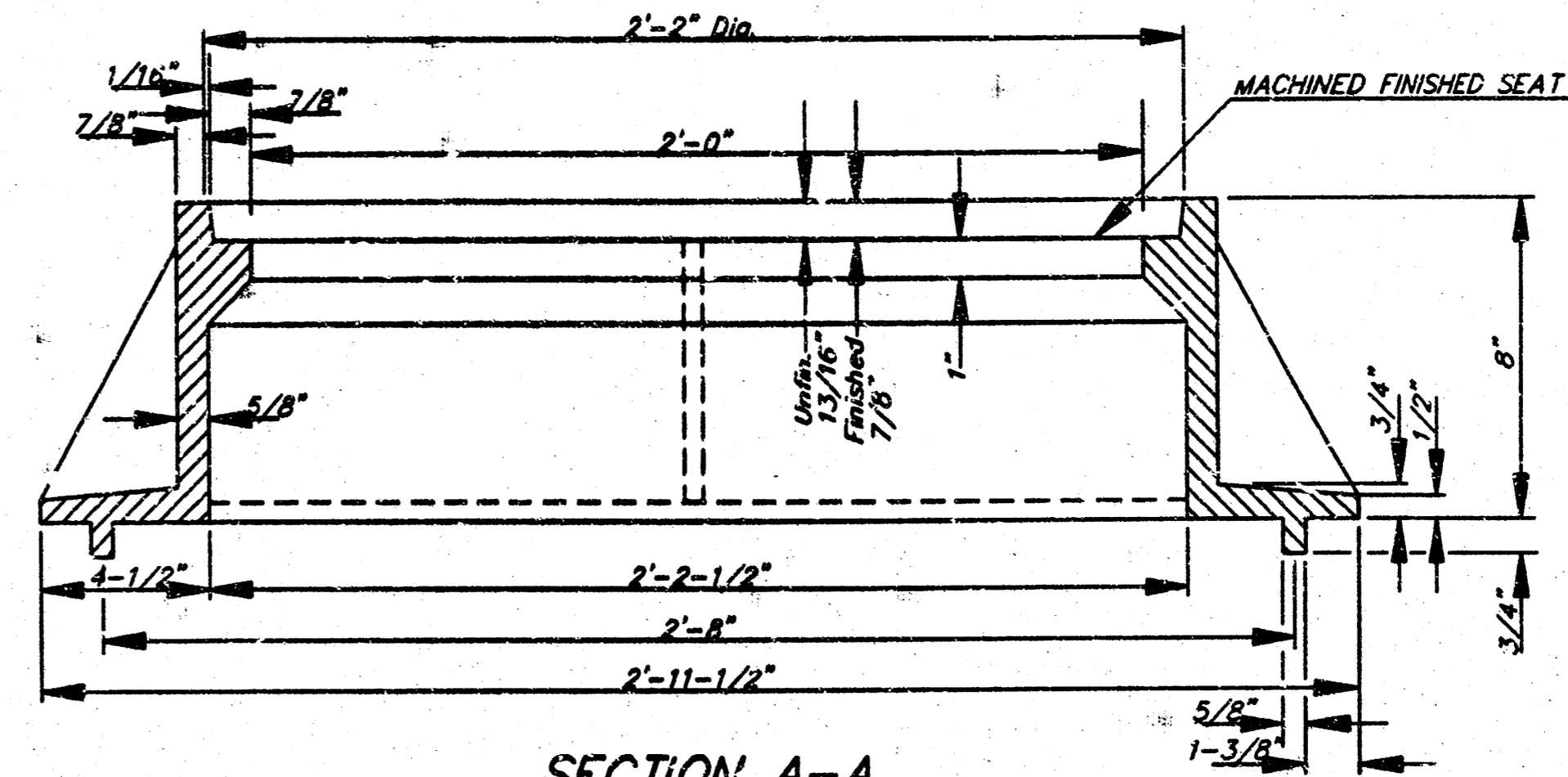


SECTION VIEW

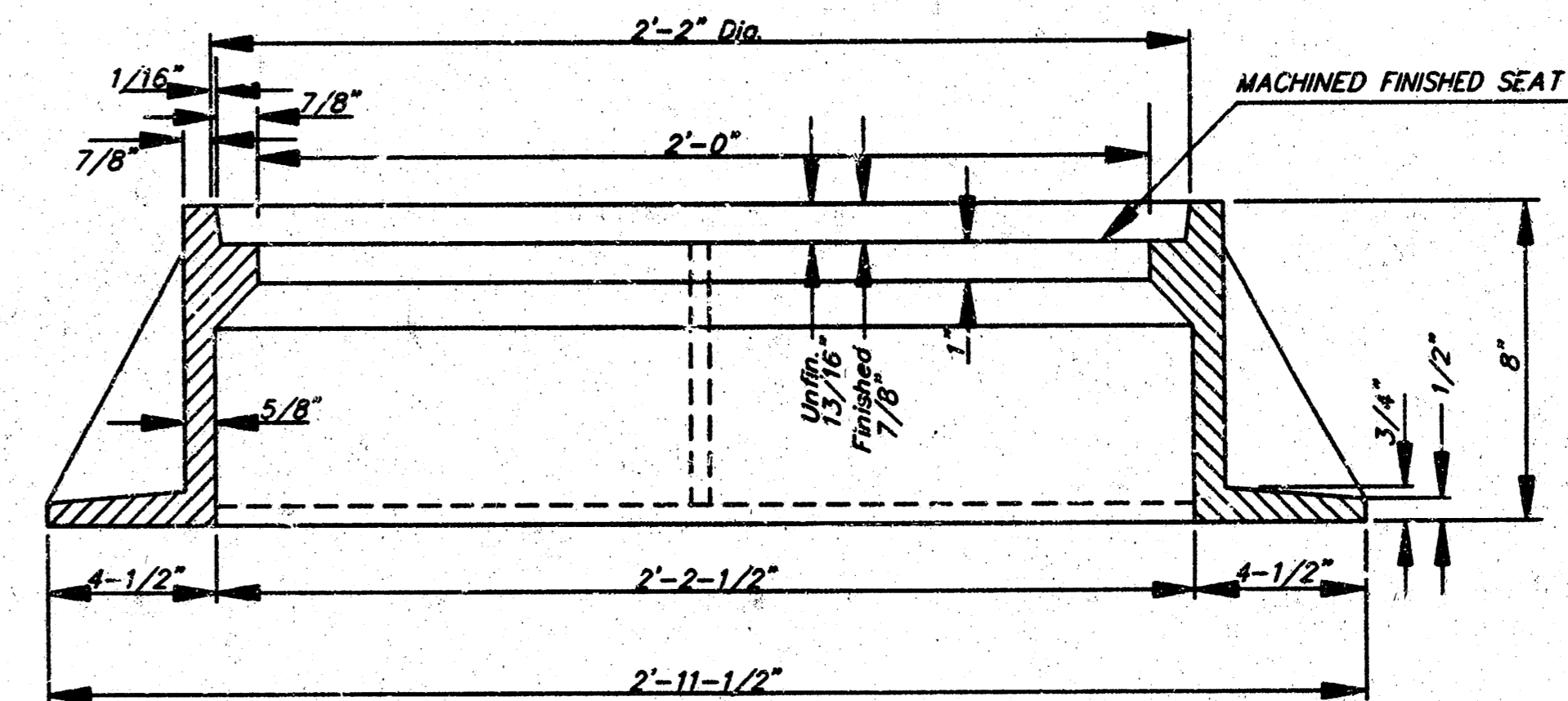
MANHOLE FRAME
Weight = 240 Lbs.



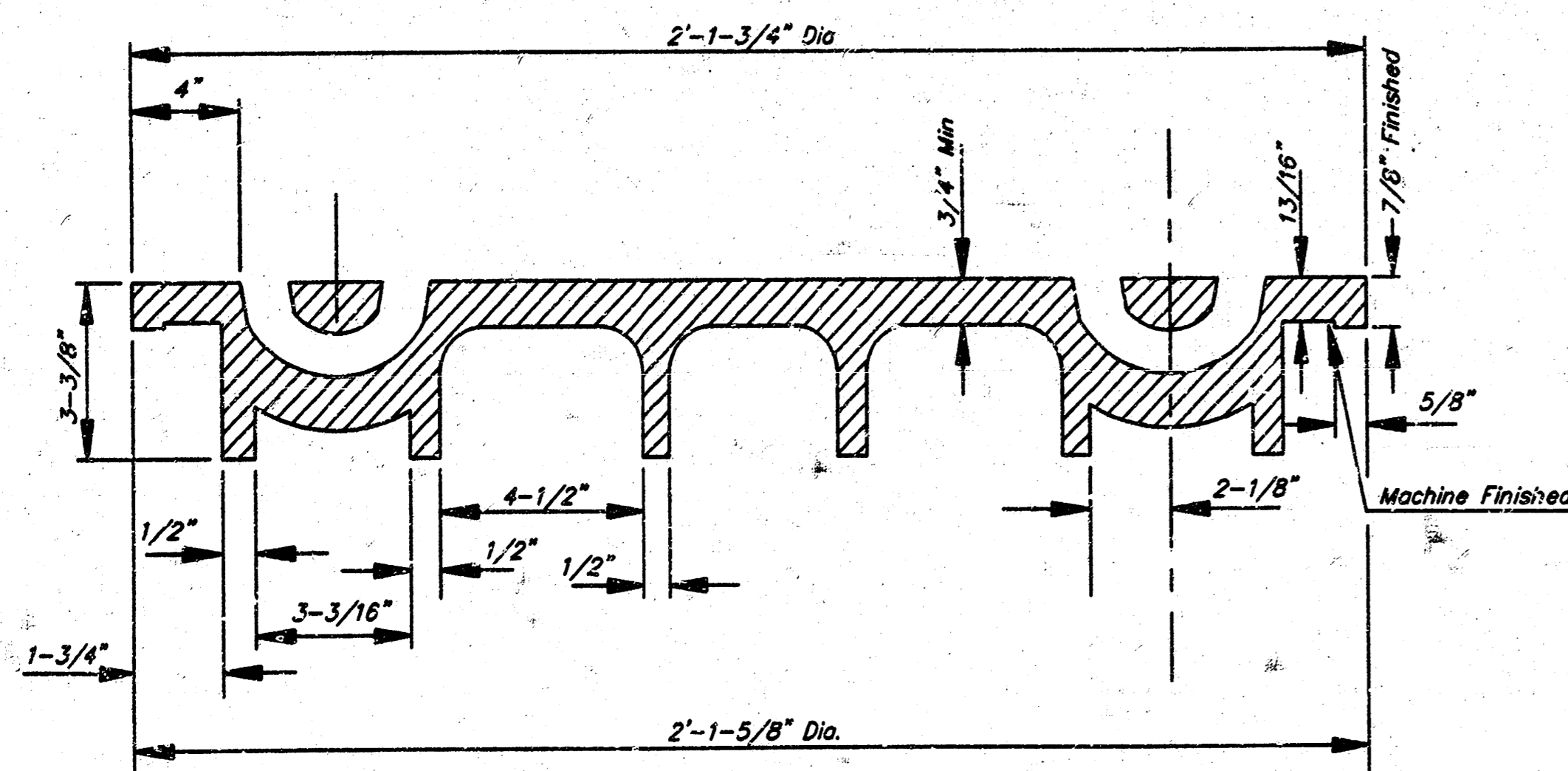
TOP VIEW



SECTION A-A
MUD RING



SECTION A-A



SECTION VIEW

GENERAL NOTES

- MANHOLE CASTINGS SHALL BE MANUFACTURED USING GOOD QUALITY GRAY IRON CONFORMING TO CLASS 30 OF A.S.T.M. DESIGNATION A-48. DIMENSIONS AND WEIGHTS SHOWN ON THE DETAILED DRAWINGS SHALL BE CONSIDERED AS MINIMUM REQUIREMENTS AND ANY DEVIATIONS FROM THE DIMENSIONS SHOWN MUST BE SPECIFICALLY APPROVED. THE FINISHED CASTINGS SHALL BE OF UNIFORM QUALITY, FREE FROM BLOWHOLES, POROSITY, HARD SPOTS, SHRINKAGE DISTORTIONS, OR OTHER DEFECTS.
- MANHOLE CASTINGS SHALL WEIGH A MINIMUM OF 180 POUNDS ON THE SOLID COVER AND 240 POUNDS ON THE MANHOLE RING. THIS IS A TOTAL OF 420 POUNDS ON A RING AND COVER SET. CASTINGS WEIGHING LESS THAN THE MINIMUM SPECIFICATIONS WILL NOT BE ACCEPTED.
- MANHOLE CASTINGS SHALL BE MANUFACTURED SUCH THAT A COVER MANUFACTURED BY ANY ONE FOUNDRY WILL FIT INTERCHANGEABLY INTO A FRAME MANUFACTURED BY ANOTHER FOUNDRY AND STILL MEET ALLOWABLE CLEARANCES AND NON-ROCKING REQUIREMENTS. THIS WILL REQUIRE MANUFACTURING OF THE MATCHING FACES ON THE COVER AND THE FRAME TO CLOSE TOLERANCES.
- THE OUTSIDE CIRCUMFERENCE OF THE VERTICAL FACE OF THE COVER AND THE INSIDE CIRCUMFERENCE OF THE VERTICAL FACE IN THE FRAME RECESS SHALL BE MANUFACTURED TO TOLERANCES SUCH THAT THE CLEARANCE BETWEEN THE COVER AND FRAME WILL NOT EXCEED 1/8" AT ANY POINT AROUND THE CIRCUMFERENCE OF THE COVER. THE SEATING SURFACES BETWEEN THE COVER AND FRAME SHALL BE MACHINED SUCH THAT THESE SEATING SURFACES SHALL MAKE FULL CONTACT FOR THEIR FULL CIRCUMFERENCE TO PRECLUDE THE COVER FROM ROCKING IN THE FRAME.
- THE MANHOLE FRAME AND COVER SHALL BE MARKED WITH LETTERING INDICATING THE NAME OF THE MANUFACTURER AND THE YEAR WHEN THE COVER OR FRAME WAS CAST. THE COVER SHALL BE FURTHER IDENTIFIED WITH REGARDS TO OWNERSHIP USING LETTERS AT LEAST 1 INCH IN HEIGHT. THIS IDENTIFICATION SHALL BE "CITY OF WICHITA SEWER DEPARTMENT". THE WORD DEPARTMENT MAY BE ABBREVIATED. THE TEXTURE OF THE TOP SURFACE OF THE COVER SHALL BE MANUFACTURED IN A CHECKERED PATTERN DESIGN AS INDICATED ON THE DRAWINGS. SMOOTH BLOCKOUTS SHALL BE UTILIZED TO HIGHLIGHT THE LETTERING ON THE COVER SURFACE. THE TOTAL AREA OF SMOOTH SURFACE BLOCKOUT SHALL NOT EXCEED THE AREA AS INDICATED ON THE DRAWING. POSITIONING OF SMOOTH BLOCKOUTS AND LETTERING MAY VARY FROM THAT SHOWN ON THE DETAILED DRAWING.

Wickham Jarvi and Warman
ARCHITECTS

(616) 474-2233
1020 SWIFT SUITE 303
NORTH KANSAS CITY
MISSOURI 64116
wjw@wjw.com

PHILLIPS 66
Kellogg & Tyler Road
Wichita, KS

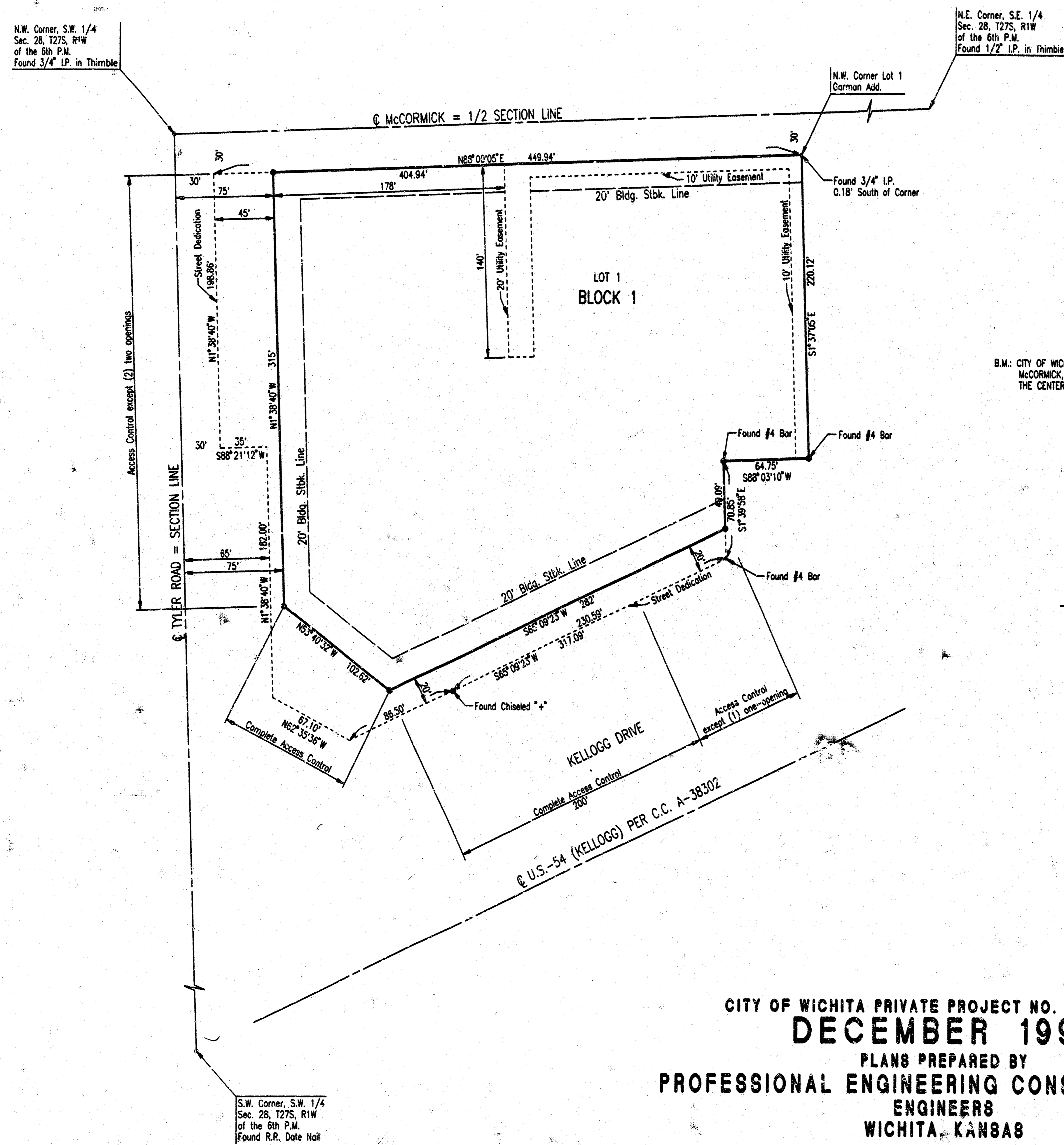


REVISIONS		
NUMBER	BY	DATE

DATE: DEC 98
SHEET
C1A
JOB NUMBER
2561-97

14 05 04 03

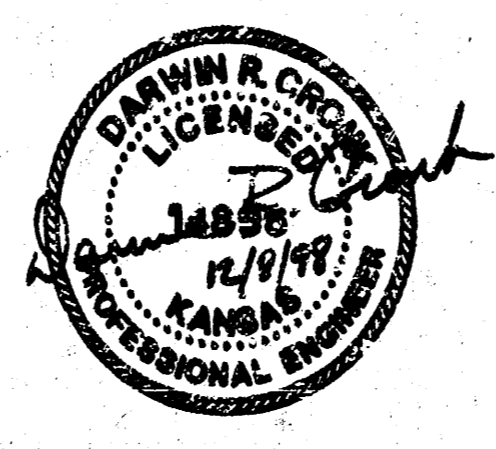
CONSTRUCTION PLANS FOR
PRIVATE SANITARY SEWER
 TO SERVE
PHILLIPS 66 KELLOGG AND TYLER ADDITION
 IN
THE CITY OF WICHITA,
 SEDGWICK COUNTY, KANSAS
MICHAEL E. LINDEBAK, P.E. - CITY ENGINEER



SCALE: 1"=50'
 ● = IRON SET
 OCTOBER 1998

INDEX OF SHEETS

- SHEET NO. C1.1 TITLE & PLAT
- SHEET NO. C1.2 SANITARY SEWER & GRADING PLAN
- SHEET NO. C1.3 TYPE "P" MANHOLE DETAILS
- SHEET NO. C1.4 FRAME & COVER DETAIL



PROJECT UNIMPACTED BY
 BAUGHMAN COMPANY, P.A.
 AS-BUILT 8/19/98

871 PPS
 CITY OF WICHITA PRIVATE PROJECT NO. 871 (607861)
DECEMBER 1998
 PLANS PREPARED BY
PROFESSIONAL ENGINEERING CONSULTANTS, P.A.
 ENGINEERS
 WICHITA, KANSAS

GENERAL NOTES

UNDERGROUND UTILITY SERVICE LINES AND OVERHEAD UTILITY POLE LINES ARE TO BE ADJUSTED AS NECESSARY BY OTHERS PRIOR TO CONSTRUCTION UNLESS THE PLANS SPECIFICALLY CALL FOR THEIR ADJUSTMENT BY THE CONTRACTOR. EXISTING UTILITIES AND THEIR LOCATION, AS SHOWN ON THE PLANS, REPRESENT THE BEST INFORMATION OBTAINABLE FOR DESIGN. LOCATION INFORMATION HAS BEEN OBTAINED FROM THE VARIOUS UTILITY COMPANIES AND IS EITHER FROM COMPANY RECORD DRAWINGS OR COMPANY PROVIDED FIELD LOCATIONS. THE CONTRACTOR WILL BE REQUIRED TO WORK AROUND EXISTING UTILITIES WITHIN THE RIGHT-OF-WAY WHICH DO NOT CONFLICT WITH PROPOSED CONSTRUCTION. CONTRACTOR SHALL SATISFY HIMSELF OF SUBSURFACE CONDITIONS PRIOR TO BIDDING.

TREES AND SHRUBS WHICH ARE IN DIRECT CONFLICT WITH PROPOSED NEW CONSTRUCTION SHALL BE REMOVED BY THE CONTRACTOR WITH THE OWNER'S APPROVAL. TREES AND SHRUBS WHICH ARE NOT IN DIRECT CONFLICT WITH PROPOSED NEW CONSTRUCTION SHALL BE SAVED AND PROTECTED FROM DAMAGE.

RUBBLE FROM THE REMOVAL OF MISCELLANEOUS STRUCTURES SHALL BE DISPOSED OF ON SITES TO BE PROVIDED BY THE CONTRACTOR AND APPROVED AS NOTED.

ALL DISPOSAL SITES MUST BE APPROVED BY THE KANSAS DEPARTMENT OF HEALTH AND ENVIRONMENT. MATERIAL EITHER STOCKPILED OR DISPOSED OF IN A FLOOD PLAIN WOULD REQUIRE A KANSAS STATE BOARD OF AGRICULTURE PERMIT. ANY MATERIAL DUMPED IN WATERS OF THE UNITED STATES OR WETLANDS IS SUBJECT TO U.S. CORPS OF ENGINEERS PERMITTING REGULATIONS. ANY MATERIAL BURIED OR STOCKPILED BEYOND APPROVED CONSTRUCTION LIMITS WOULD REQUIRE ADDITIONAL ARCHAEOLOGICAL INVESTIGATIONS UNLESS BURIED IN A PREVIOUSLY APPROVED BORROW LOCATION.

CONTRACTOR SHALL PROVIDE A MINIMUM FORTY-EIGHT (48) HOUR ADVANCE NOTICE (EXCLUDING WEEKENDS AND HOLIDAYS) PRIOR TO BEGINNING ANY EXCAVATION, TO KANSAS ONE-CALL SYSTEM, A UTILITY LOCATION SERVICE, AT (316) 887-2470 TO REQUEST THE FOLLOWING UTILITY COMPANIES TO LOCATE ALL EXISTING LINES WITHIN THE PROJECT AREA: K.G.E. GAS, PEOPLES NATURAL GAS, K.G.E. ELECTRIC, SOUTHWESTERN BELL TELEPHONE, MULTIMEDIA CABLEVISION, CITY OF WICHITA SEWER MAINTENANCE AND CITY OF WICHITA WATER DEPARTMENT.

THE CONTRACTOR SHALL BE RESPONSIBLE FOR PRESERVING PROPERTY IRONS. THE CONTRACTOR WILL BE REQUIRED TO RE-ESTABLISH ANY PROPERTY IRONS WHICH ARE DAMAGED OR DESTROYED BY HIS CONSTRUCTION OPERATIONS. SUCH IRONS SHALL BE RE-ESTABLISHED BY A LICENSED LAND SURVEYOR IN ACCORDANCE WITH STATE LAWS.

THE WATER DEPARTMENT SHALL FIELD LOCATE WATER VALVES ONE TIME DURING CONSTRUCTION WHEN REQUESTED BY THE CONTRACTOR. IT SHALL BE THE CONTRACTOR'S RESPONSIBILITY TO PRESERVE SUCH FIELD LOCATIONS DURING THE CONSTRUCTION PROCESS. WATER VALVES, WATER VALVE BOXES OR FIRE HYDRANTS DAMAGED DURING CONSTRUCTION SHALL BE REPAIRED BY THE CONTRACTOR AT HIS OWN EXPENSE.

ALL CONSTRUCTION AND MATERIALS FOR SANITARY SEWER CONSTRUCTION SHALL BE IN ACCORDANCE WITH CITY OF WICHITA STANDARD SPECIFICATIONS.

APPROVED AS NOTED
 BY CITY ENGINEER OF WICHITA

- SANITARY SEWERS _____
- STORM SEWERS _____
- DRIVEWAY APPROACHES _____
- WATER MAINS _____
- PAVING _____

*Booked
 C-285
 5-26-99
 RDL*

*McCullough
 Excavation*

NOTE TO CONTRACTOR

INSPECTION AND TESTING FOR THIS PROJECT IS TO BE PROVIDED BY A LICENSED CONSULTING ENGINEERING FIRM CONTRACTED BY THE OWNER/DEVELOPER. SAID INSPECTION TO BE IN ACCORDANCE WITH THE CITY OF WICHITA STANDARD CONSTRUCTION ENGINEERING PRACTICES AND CERTIFIED BY A LICENSED PROFESSIONAL ENGINEER. NO WORK SHALL BE PERFORMED IN DEDICATED EASEMENTS OR PUBLIC RIGHT-OF-WAY BY THE CONTRACTOR UNTIL SUCH INSPECTION IS ARRANGED FOR AND REQUIRED BONDS HAVE BEEN SUBMITTED TO AND APPROVED BY THE CITY NOR SHALL ANY WORK BE COMMENCED IN DEDICATED EASEMENTS OR PUBLIC RIGHT-OF-WAY WITHOUT WRITTEN AUTHORIZATION BY THE CITY ENGINEER. IMPROVEMENTS PERFORMED UNDER THIS PROJECT SHALL NOT BE ACCEPTED BY THE CITY UNTIL ALL APPLICABLE DOCUMENTATION HAS BEEN SUBMITTED TO THE CITY ENGINEER. THIS MAY INCLUDE: AS-BUILT DRAWINGS, INSPECTION LOGS, TEST DOCUMENTATION, TV TAPES, AND A CERTIFICATE OF COMPLETION. THE ABOVE SHALL BE PERFORMED BY THE CONSULTING FIRM CONTRACTED TO INSPECT THIS PROJECT.

Wickham Jarvi and Warman
 ARCHITECTS
 1020 NORTH STATE BLDG
 NORTH KANSAS CITY
 MISSOURI 64116
 (816) 414-2239
 FAX (816) 414-0291
 wj@wjarvi.com

PHILLIPS 66
 Kellogg & Tyler Road
 Wichita, KS



REVISIONS
 NUMBER BY DATE

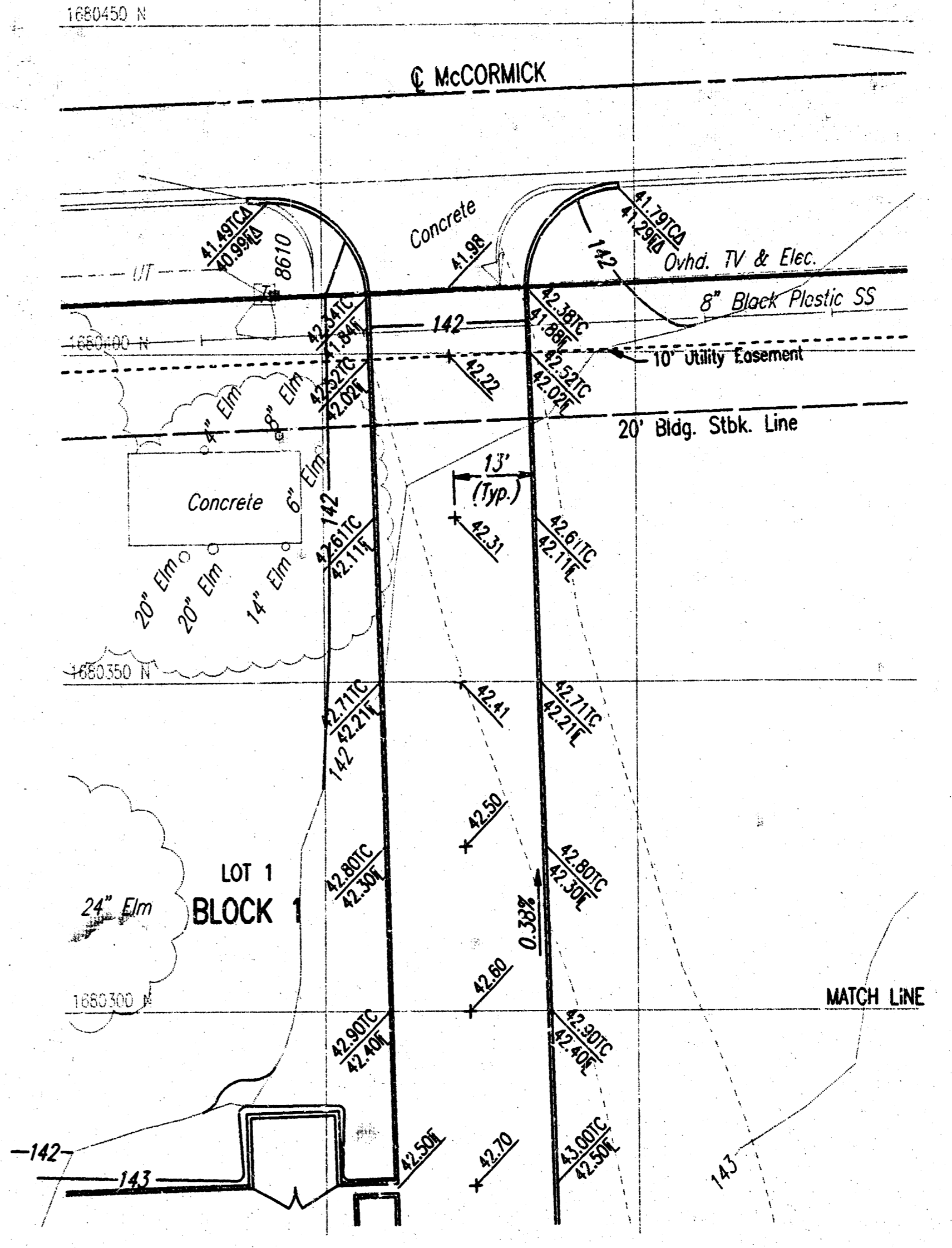
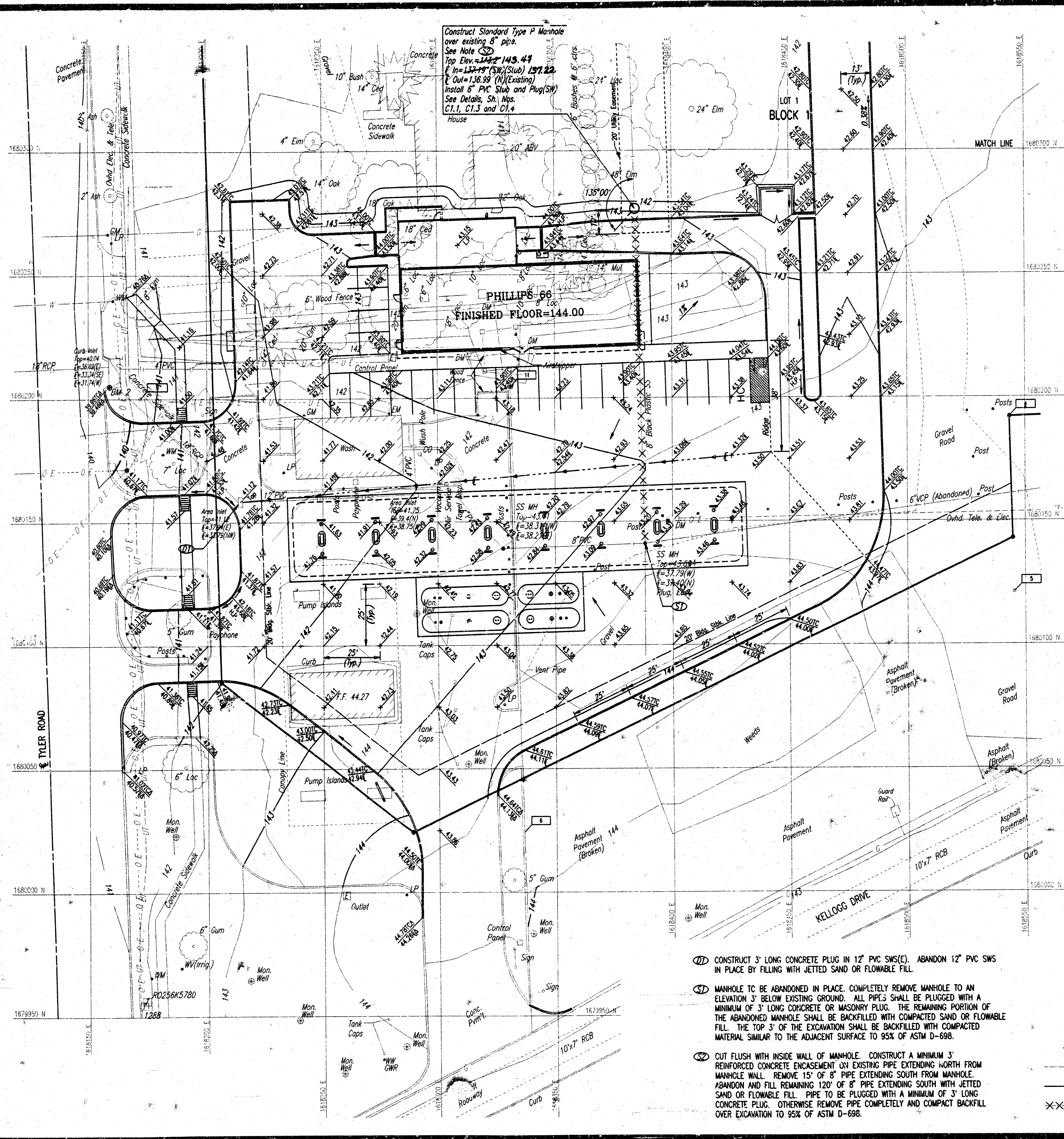
DATE: DEC 98

SHEET
 C1.1

JOB NUMBER
 2561-97

FILE: 1-50.00
 05-13-1999 10:35:21 am

SCALE: 1"=20.00
 05-13-1999 10:33:43 am
 1998 06363 001 SITEPLAN



BM 2: CHISELED "4" IN TOP OF CURB S.W. CORNER CURB INLET ON EAST SIDE TYLER WEST OF CAR WASH. ELEV.=140.08

BM 3: CHISELED "4" IN TOP OF CURB AT WEST END OF MEDIAN BETWEEN WEST BOUND KELLOGG AND KELLOGG DRIVE ADJACENT TO S.E. ENTRANCE TO PHILLIPS 66. ELEV.=143.40

- NOTES
1. VARIOUS UTILITY APPURTENANCES AND CONNECTIONS MAY NEED TO BE ALTERED AND/OR ADJUSTED TO MATCH GRADING PLAN.
 2. SEE ARCHITECTURAL DRAWINGS FOR GEOMETRIC LAYOUT AND PAVING DETAILS.

SCALE: 1"=20'

- ① CONSTRUCT 3' LONG CONCRETE PLUG IN 12" PVC SWS(E). ABANDON 12" PVC SWS IN PLACE BY FILLING WITH JETTED SAND OR FLOWABLE FILL.
- ② MANHOLE TO BE ABANDONED IN PLACE. COMPLETELY REMOVE MANHOLE TO AN ELEVATION 3' BELOW EXISTING GROUND. ALL PIPES SHALL BE PLUGGED WITH A MINIMUM OF 3' LONG CONCRETE OR MASONRY PLUG. THE REMAINING PORTION OF THE ABANDONED MANHOLE SHALL BE BACKFILLED WITH COMPACTED SAND OR FLOWABLE FILL. THE TOP 3' OF THE EXCAVATION SHALL BE BACKFILLED WITH COMPACTED MATERIAL SIMILAR TO THE ADJACENT SURFACE TO 95% OF ASTM D-698.
- ③ CUT FLUSH WITH INSIDE WALL OF MANHOLE. CONSTRUCT A MINIMUM 3' REINFORCED CONCRETE ENCASUREMENT ON EXISTING PIPE EXTENDING NORTH FROM MANHOLE WALL. REMOVE 15' OF 8" PIPE EXTENDING SOUTH FROM MANHOLE. ABANDON AND FILL REMAINING 120' OF 8" PIPE EXTENDING SOUTH WITH JETTED SAND OR FLOWABLE FILL. PIPE TO BE PLUGGED WITH A MINIMUM OF 3' LONG CONCRETE PLUG. OTHERWISE REMOVE PIPE COMPLETELY AND COMPACT BACKFILL OVER EXCAVATION TO 95% OF ASTM D-698.

- LEGEND
- Δ MATCH EXISTING ELEVATION
 - H.P. HIGH POINT
 - L.P. LOW POINT
 - TC TOP OF CURB ELEVATION
 - FLOWLINE ELEVATION
 - FLOW DIRECTION
 - 140 — EXISTING CONTOUR
 - 140 — PROPOSED CONTOUR
 - XXXXXX EXISTING SANITARY SEWER TO BE ABANDONED/AND/OR REMOVED

PROJECT INSPECTED BY BAUGHMAN CO., P.A.
 ASBUILT 0199

CONTROL POINTS

POINT	NORTH	EAST	DESCRIPTION
4	1,680,191.9600	1,618,543.3400	#4 Bar (Baughman)
5	1,680,121.1400	1,618,545.4000	#4 Bar (Baughman)
6	1,680,024.2600	1,618,336.1500	Chiseled "+"
9	1,680,200.1500	1,618,172.7100	#4 Bar (Baughman)
11	1,680,204.7000	1,618,330.9900	#4 Bar (Baughman)

④ = CONTROL POINT

Wickham Jarvi and Warman
 ARCHITECTS

1528 SHAWT SUITE 355
 NORTH WANGAS CITY
 MISSOURI 64116

(816) 414-2323
 FAX (816) 414-1202
 wjarc@earthlink.net

PHILLIPS 66
 Kellogg & Tyler Road
 Wichita, KS



REVISIONS

NUMBER	BY	DATE

DATE: DEC 1998

SHEET
 C1.2

JOB NUMBER
 2561-97