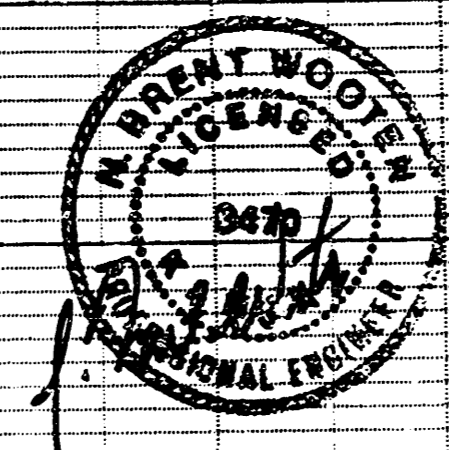
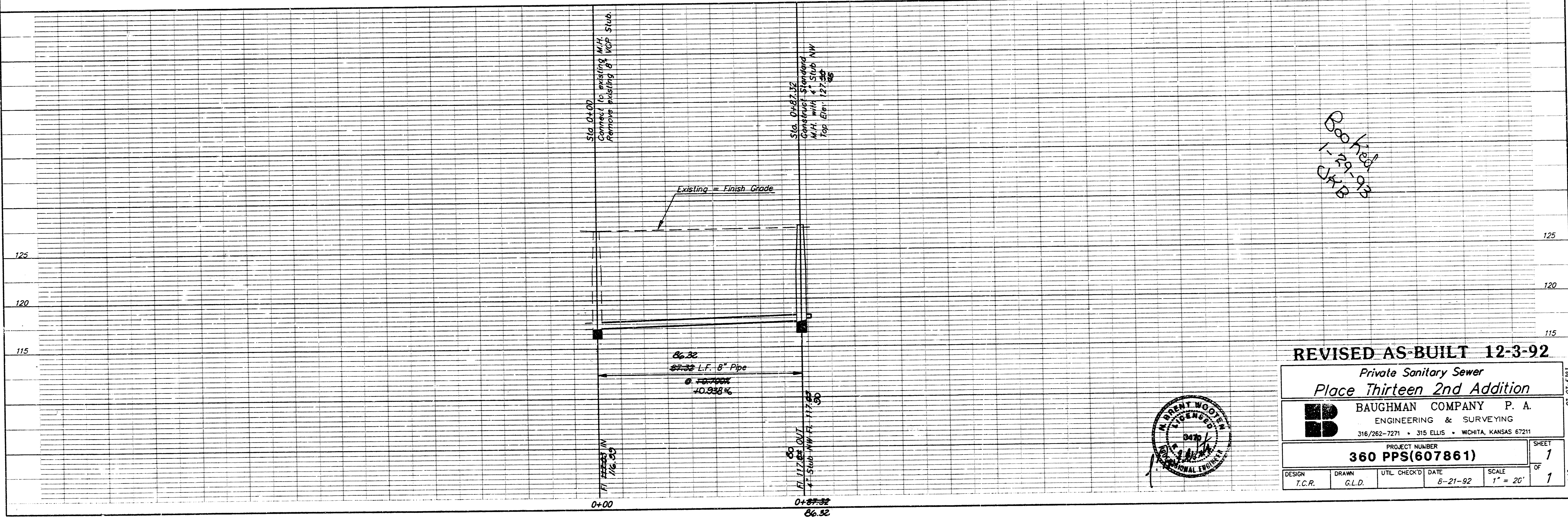


SCALE: 1" = 20' HORIZ.  
1" = 5' VERT.

APPROVED AS NOTED  
BY CITY ENGINEER OF WICHITA  
Sanitary Sewers UR 4-18742  
Storm Sewers \_\_\_\_\_  
Driveway Approaches \_\_\_\_\_  
Water Mains \_\_\_\_\_  
Paving \_\_\_\_\_

NOTE TO CONTRACTORS  
Inspection and testing for this project is to be provided by a Licensed Consulting Engineering Firm under contract with the Owner/Developer. Said inspection to be in accordance with the City of Wichita standard construction engineering practices and certified by a Licensed Professional Engineer. No work shall be performed in dedicated easements or public right-of-way by the Contractor without such inspection nor shall any work be commenced without written authorization by the City Engineer.

BENCH MARK:  
City Standard Disc., 29.5' E and 35.9' N of center of Sheridan & 13th St. No. Elev. = 125.72 City Datum  
Square cut on top of curb at west end of curb return at SW corner of Custer and 13th St. No. Elev. = 127.93 City Datum



**REVISED AS-BUILT 12-3-92**  
Private Sanitary Sewer  
Place Thirteen 2nd Addition

**BAUGHMAN COMPANY P. A.**  
ENGINEERING & SURVEYING  
316/262-7271 • 315 ELLIS • WICHITA, KANSAS 67211

PROJECT NUMBER: **360 PPS(607861)**

DESIGN T.C.R.	DRAWN G.L.D.	UTIL. CHECK'D DATE 8-21-92	SCALE 1" = 20'
------------------	-----------------	----------------------------------	-------------------

SHEET 1 OF 1