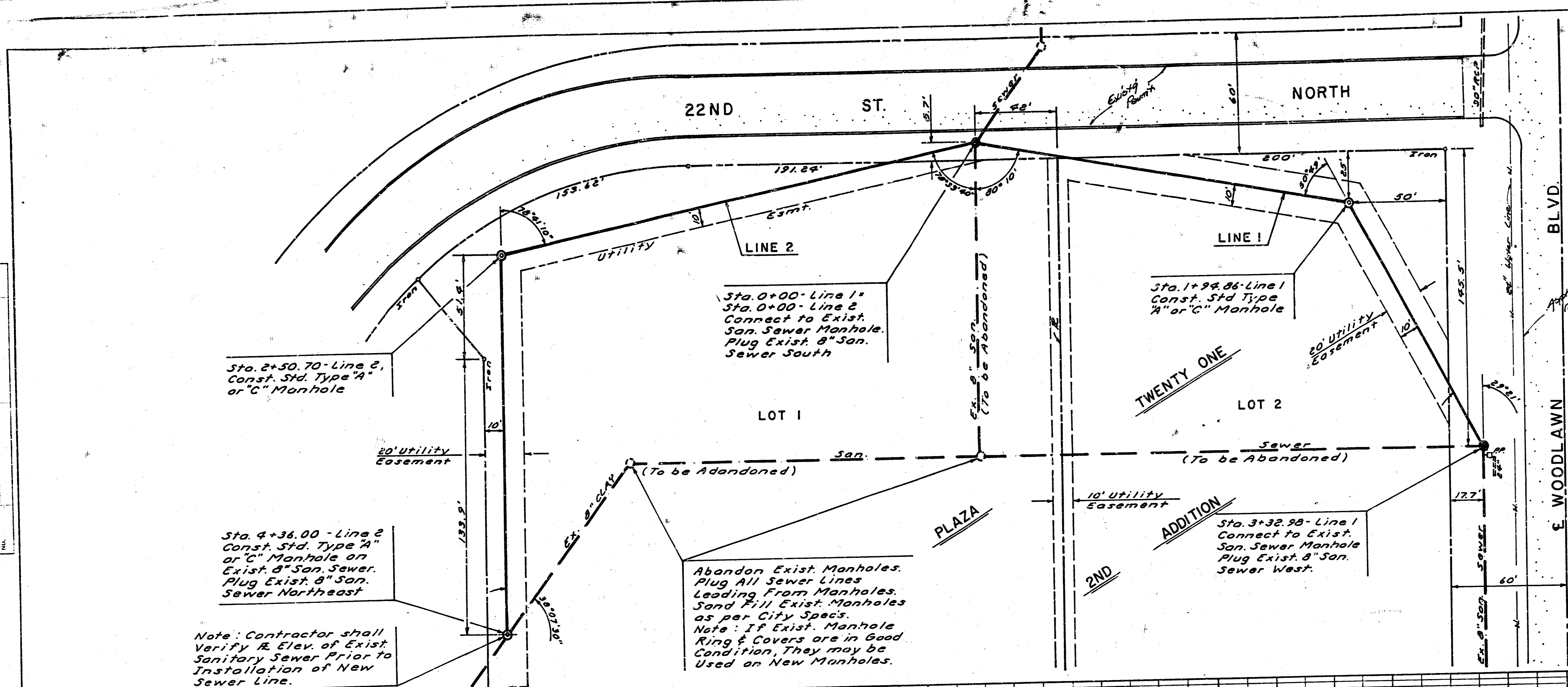


PLAN
 SURVEYED BY: [Signature]
 CHECKED BY: [Signature]
 DATE: [Date]
 NOTE: BOOK NO. [Number] SHEET NO. [Number]

PROFILE
 SURVEYED BY: [Signature]
 CHECKED BY: [Signature]
 DATE: [Date]
 NOTE: BOOK NO. [Number] SHEET NO. [Number]



Scale: Hor. 1"=30'
 Ver. 1"=5'

B.M. RR Spk. in PP
 150' S. & 20' E. NE
 Cor. Lot 1, El. 194.88

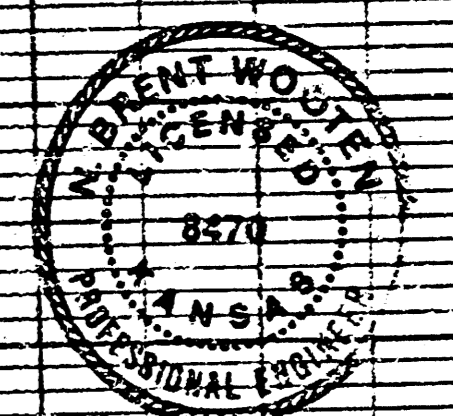
THE CONTRACTOR SHALL BE RESPONSIBLE FOR PRESERVING PROPERTY IRONS. THE CONTRACTOR SHALL BE REQUIRED TO RE-ESTABLISH ANY PROPERTY IRONS WHICH ARE DAMAGED OR DESTROYED BY HIS CONSTRUCTION OPERATIONS. SUCH IRONS SHALL BE RE-ESTABLISHED BY A LICENSED LAND SURVEYOR OR A LICENSED PROFESSIONAL ENGINEER IN ACCORDANCE WITH STATE LAWS.

NOTE TO CONTRACTOR
 This project will be constructed under the supervision of the CITY ENGINEER and conforming to the SPECIFICATIONS of the CITY OF WICHITA. The CONTRACTOR will prepay the City of Wichita for all costs of Inspection.

Abandon Exist. Manholes. Plug All Sewer Lines Leading From Manholes. Sand Fill Exist. Manholes as per City Specs.
 Note: If Exist. Manhole Ring & Covers are in Good Condition, They may be Used on New Manholes.

Note: Contractor shall Verify R. Elev. of Exist. Sanitary Sewer Prior to Installation of New Sewer Line.

APPROVED AS NOTED
 By CITY ENGINEER OF WICHITA
 Sanitary Sewers [Signature]
 Storm Sewers [Signature]
 Driveway Approaches [Signature]



PROPOSED PRIVATE SANITARY SEWER RELOCATION TO SERVE LOTS 1 AND 2 PLAZA TWENTY ONE 2ND ADDITION
 PRIVATE CITY PROJ. 468-76-245-80000-000-000-008

BAUGHMAN COMPANY, P.A.
 SURVEYING & ENGINEERING
 316/262-7277 • 330 LAURA • WICHITA, KANSAS 67211

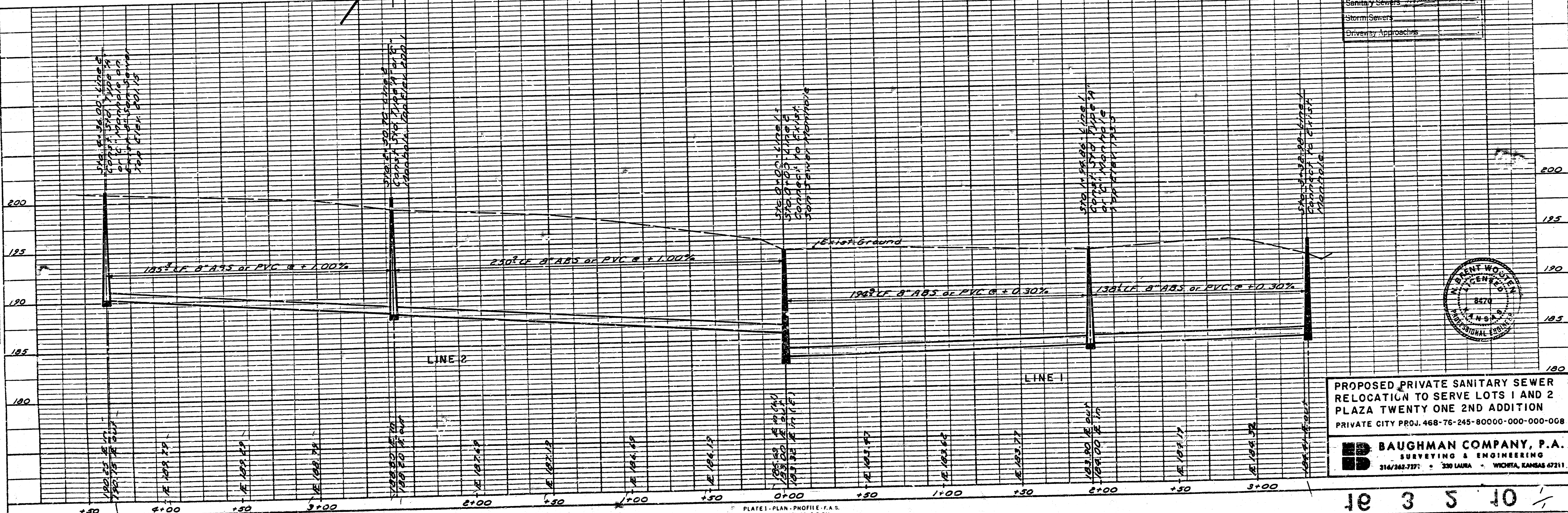


PLATE 1 - PLAN - PROFILE - P.A.S.
 CLEARPRINT PAPER CO. 31, P. CAL
 NO. 100M-1

10 3 5 10