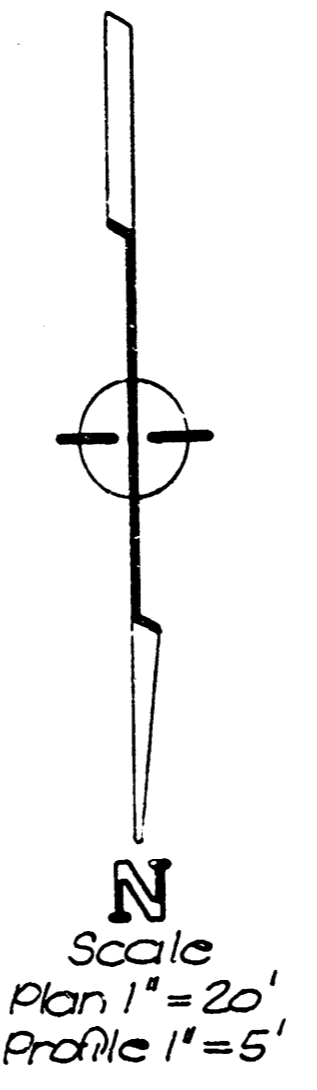
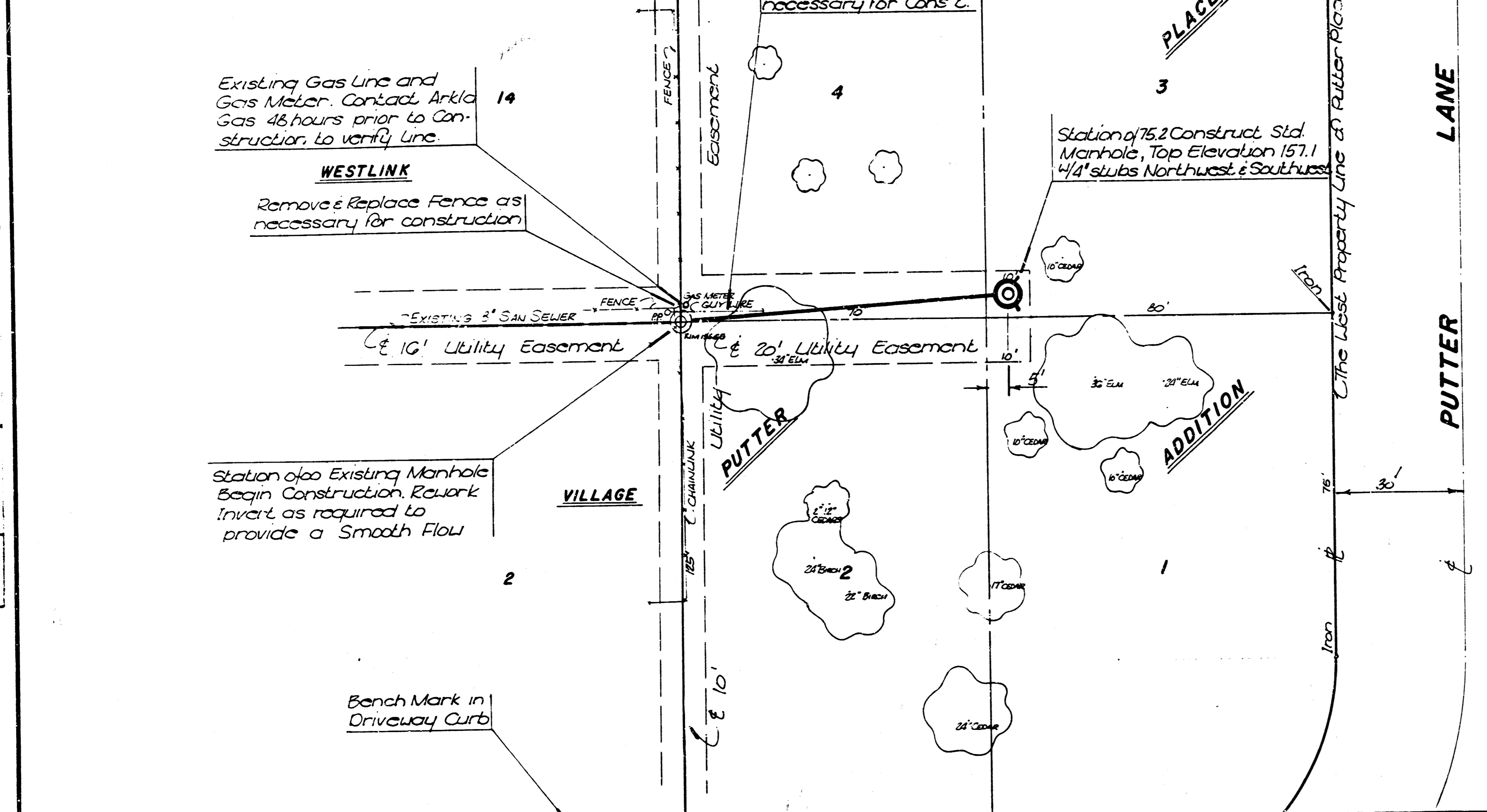
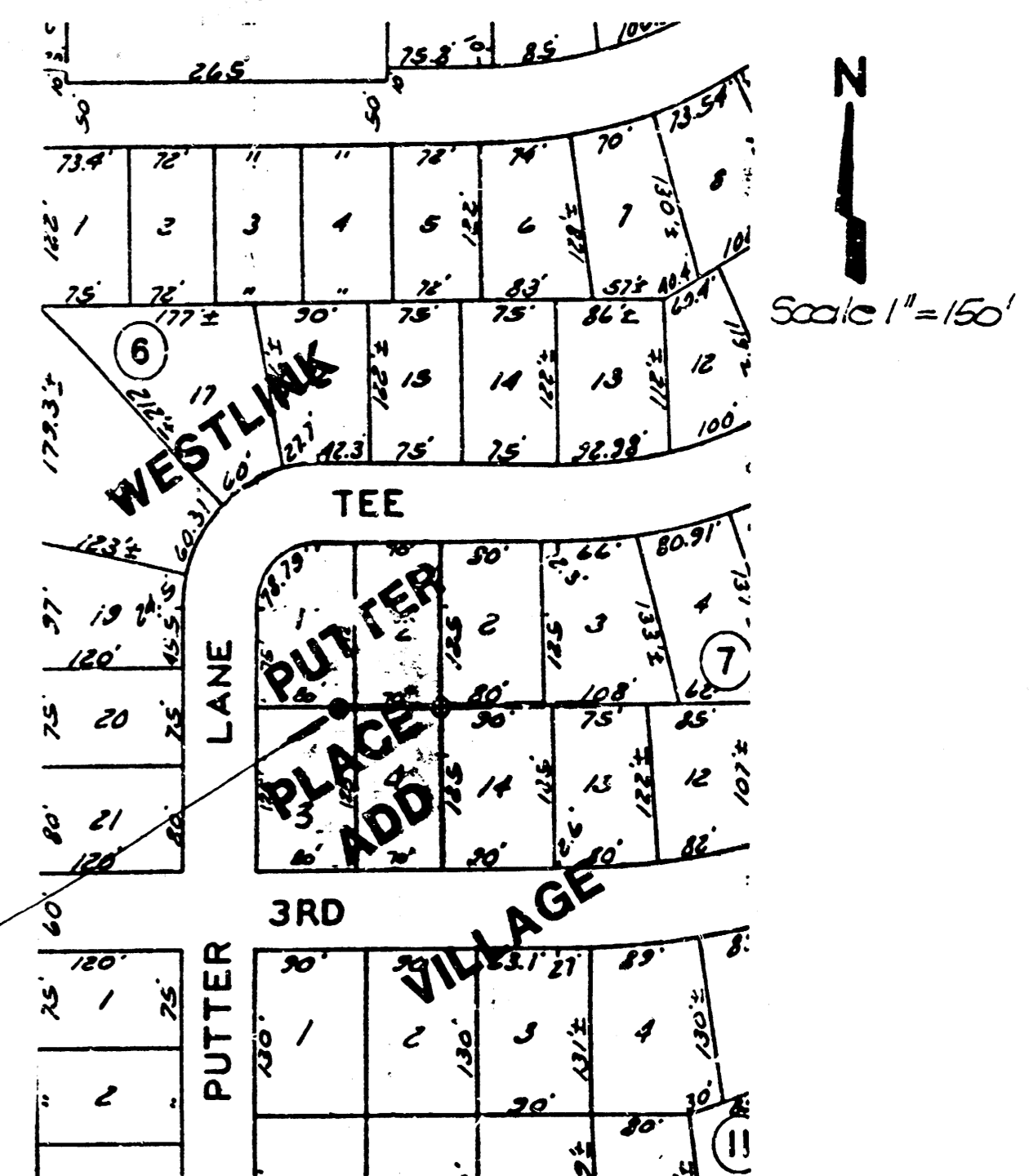


Bench Mark City of Wichita BM Disc, Top North handrail at East end R.C.B. Westlink & Central Elevation 147.05 City Datum  
 Bench Mark 6" Curb @ East side of Drive on Lot 2, Block 7, Westlink Village Addition Elevation 154.34 City Datum



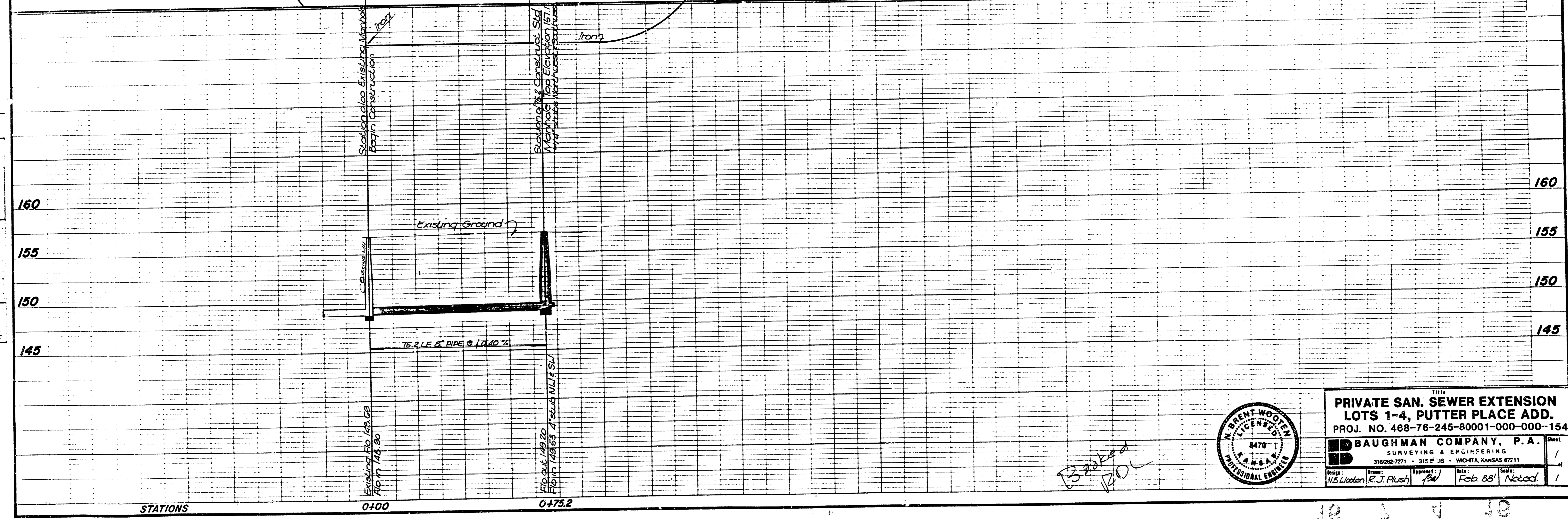
**GENERAL NOTES**

- Underground utility service lines and overhead utility pole lines are to be adjusted as necessary by others prior to construction unless the plans specifically call for their adjustment by the Contractor or unless the plans specifically identify a utility to be adjusted by its owner during construction. Existing utilities and their location, as shown on the plans, represent the best information obtainable for design. The Contractor will be required to work around existing utilities within the right-of-way which do not conflict with proposed construction.
- Rubble from the removal of miscellaneous structures and excess excavation which is to be wasted shall be disposed of on sites to be provided by the Contractor. These sites shall be approved by the Engineer as to suitability, appearance and site location. Locations that, in the opinion of the Engineer, will leave an unsightly appearance will not be approved.
- Trees and shrubs in public right-of-way which are in direct conflict with proposed new construction shall be removed by the Contractor with the Engineer's approval. Trees and shrubs which are not in direct conflict with proposed new construction shall be saved and protected from damage.
- The Contractor shall be responsible for preserving property irons. The Contractor will be required to re-establish any property irons which are damaged or destroyed by his construction operations. Such irons shall be re-established by a licensed land surveyor in accordance with state laws.

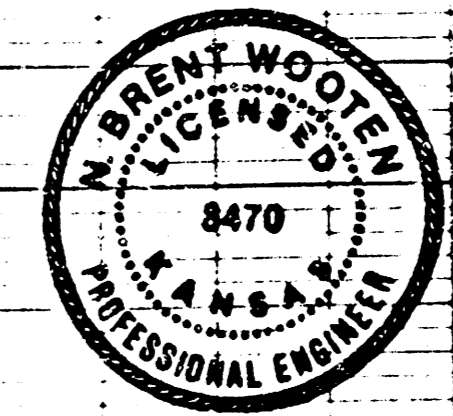


APPROVED AS NOTED  
 BY CITY ENGINEER OF WICHITA  
 Sanitary Sewers 208 2/16/88  
 Storm Sewers \_\_\_\_\_  
 Driveway Approaches \_\_\_\_\_  
 Water Mains \_\_\_\_\_

**NOTE TO CONTRACTOR**  
 This project will be constructed under the supervision of the CITY ENGINEER and conforming to the SPECIFICATIONS of the CITY OF WICHITA. The CONTRACTOR will pay the City of Wichita for all costs of plan review, inspection and booking per contract.



*Block 7  
 1201*



PRIVATE SAN. SEWER EXTENSION  
 LOTS 1-4, PUTTER PLACE ADD.  
 PROJ. NO. 468-76-245-80001-000-000-154

BAUGHMAN COMPANY, P.A.  
 SURVEYING & ENGINEERING  
 316-262-7271 • 315-51-25 • WICHITA, KANSAS 67211

Drawn: W.B. Upton (E.J. Plush) Approved: [Signature] Date: Feb. 88' Scale: Noted