

PRIVATE SANITARY SEWER EXTENSION TO SERVE

QUIKTRIP 1ST ADDITION

PROJECT NO. 468-76-245-80001-000-000-193

INDEX CODE 606947

CITY OF WICHITA, KANSAS

MICHAEL E. LINDEBAK CITY ENGINEER

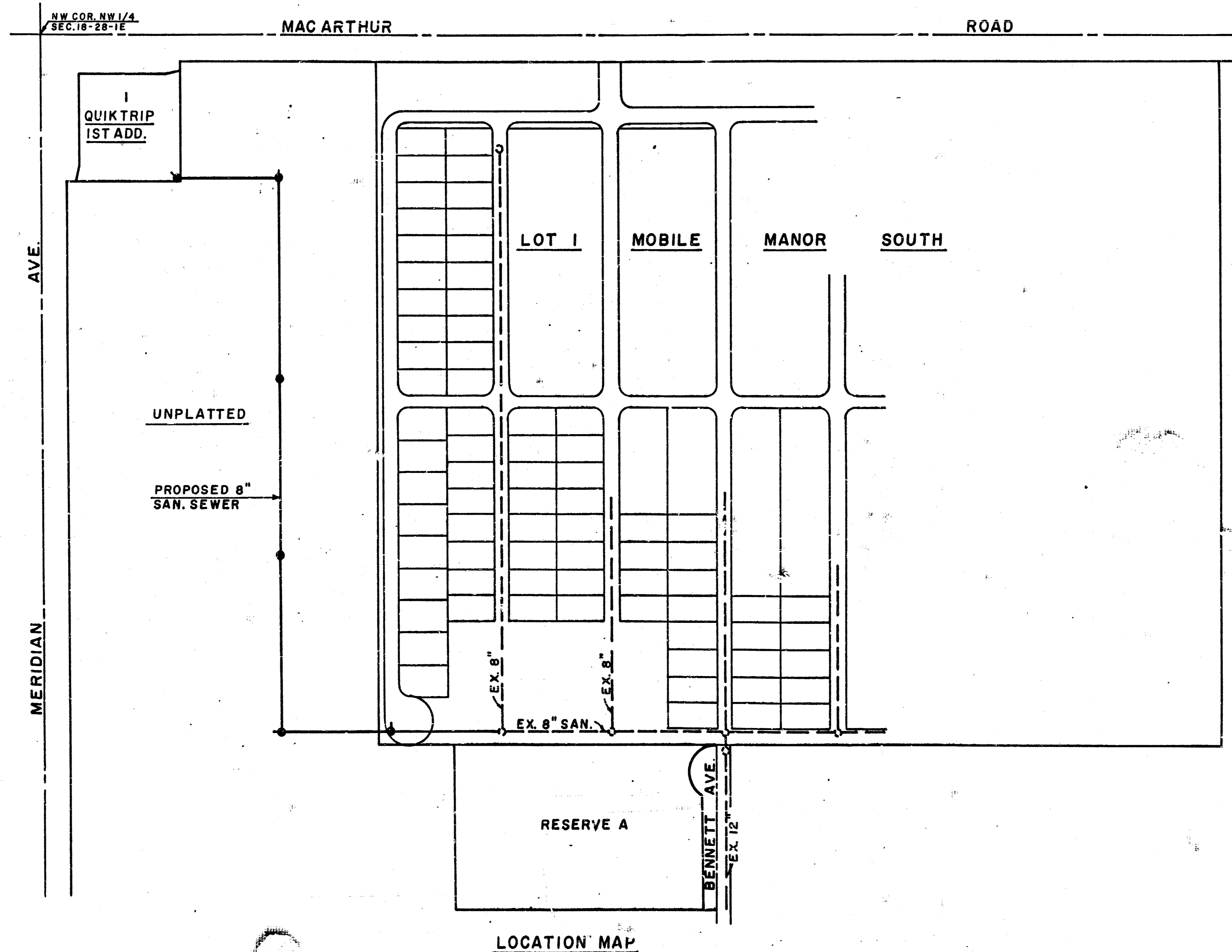
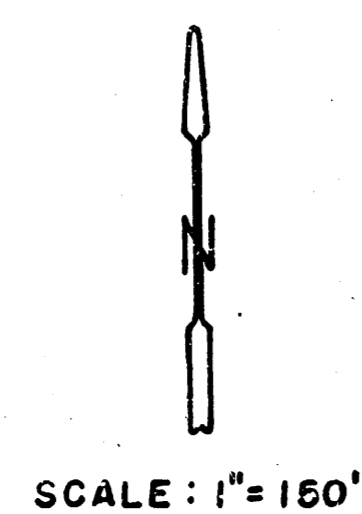
APPROVED AND SIGNED
 By CITY ENGINEER WICHITA
 Sanitary Sewers *ML 12/14/88*
 Storm Sewers _____
 Driveway Approaches _____
 Water Mains _____
 Paving _____

GENERAL SANITARY SEWER NOTES

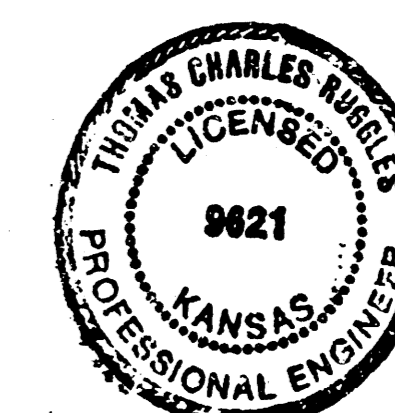
- Underground utility service lines and overhead utility pole lines are to be adjusted as necessary by others prior to construction unless the plans specifically call for their adjustment by the Contractor or unless the plans specifically identify a utility to be adjusted by its owner during construction. Existing utilities and their location, as shown on the plans, represent the best information obtainable for design. The Contractor will be required to work around existing utilities within the right-of-way which do not conflict with proposed construction.
- Rubble from the removal of miscellaneous structures and excess excavation which is to be wasted shall be disposed of on sites to be provided by the Contractor. These sites shall be approved by the Engineer as to suitability, appearance and site location. Locations that, in the opinion of the Engineer, will leave an unsightly appearance will not be approved.
- Trees and shrubs in public right-of-way which are in direct conflict with proposed new construction shall be removed by the Contractor with the Engineer's approval. Trees and shrubs which are not in direct conflict with proposed new construction shall be saved and protected from damage.
- The Contractor shall be responsible for preserving property irons. The Contractor will be required to re-establish any property irons which are damaged or destroyed by his construction operations. Such irons shall be re-established by a licensed land surveyor or a licensed professional engineer in accordance with state laws.

INDEX TO DRAWINGS

SH. NO.	DESCRIPTION
1	TITLE SHEET
2	SANITARY SEWER, PLAN-PROFILE



NOTE TO CONTRACTOR
 INSPECTION AND TESTING FOR THIS PROJECT IS TO BE PROVIDED BY A LICENSED CONSULTING ENGINEERING FIRM UNDER CONTRACT WITH THE OWNER/DEVELOPER. SAID INSPECTION TO BE IN ACCORDANCE WITH THE CITY OF WICHITA STANDARD CONTRACT FOR ENGINEERING SERVICES AND CERTIFIED BY A LICENSED PROFESSIONAL ENGINEER. NO WORK SHALL BE PERFORMED OR RESTARTED WITHOUT THE PUBLIC RIGHT-OF-WAY. THE CONTRACTOR SHALL BE RESPONSIBLE FOR SUCH INSPECTION WORK. NO WORK BE CONSIDERED IN DEDICATED EASEMENTS OR RIGHT-OF-WAY WITHOUT WRITTEN AUTHORIZATION BY THE ENGINEER.



*Booked
5-89
RDC*

Rev. As-built 4-17-89 TCR NOV. 21, 1988

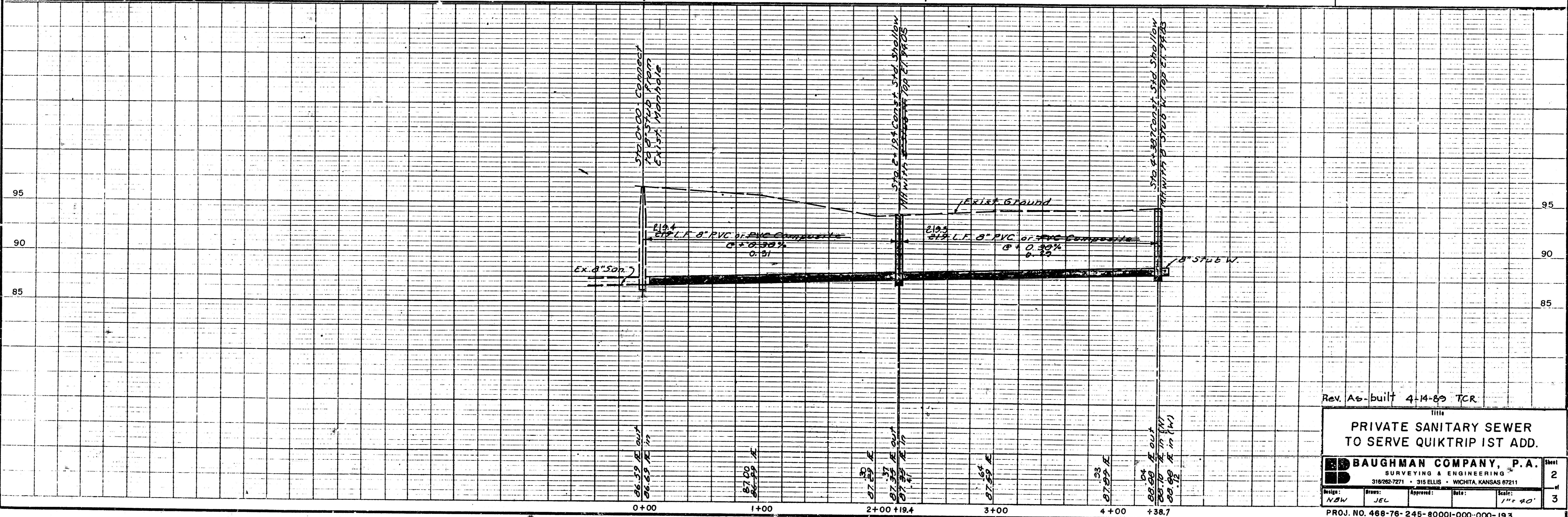
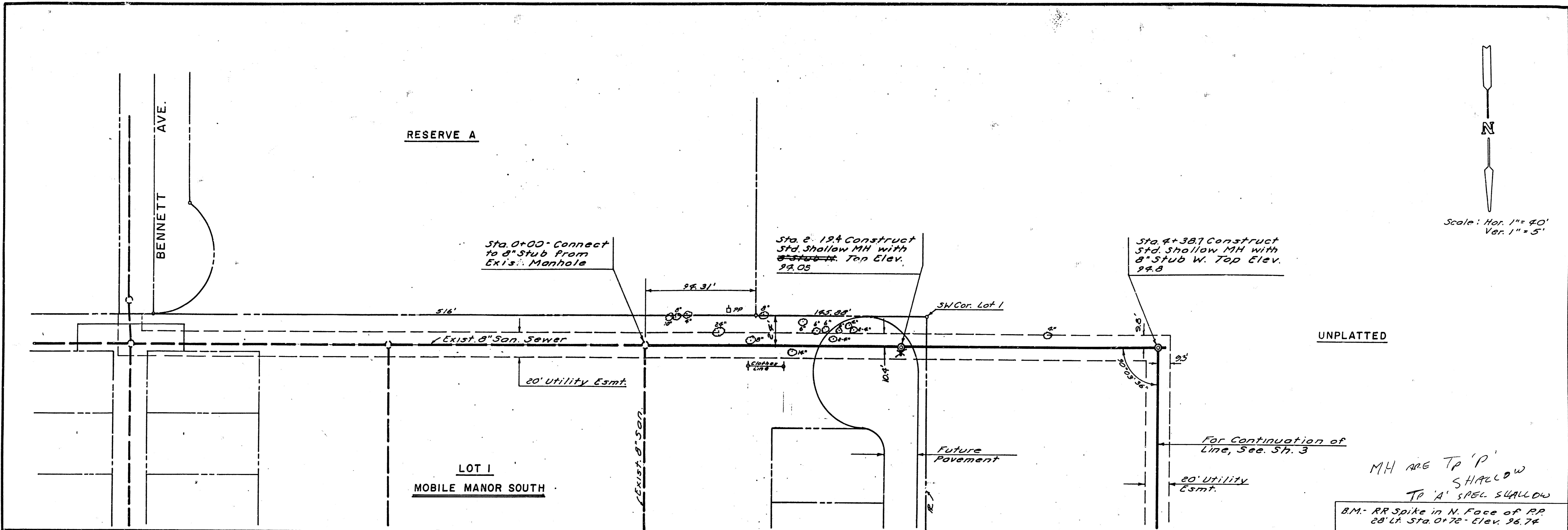
BAUGHMAN COMPANY, P.A.
 SURVEYING & ENGINEERING
 318262-7271 • 315 ELLIS • WICHITA, KANSAS 67211

FILMED FROM THE BEST AVAILABLE COPY

Scale: Hor. 1" = 40'
Ver. 1" = 5'

PLAN
NOTED
ALIGNMENT CHECKED
BY: [Signature]
DATE: [Date]

PROFILE
NOTED
VERTICAL CHECKED
BY: [Signature]
DATE: [Date]



Rev. As-built 4-14-89 TCR

PRIVATE SANITARY SEWER
TO SERVE QUIKTRIP 1ST ADD.

BAUGHMAN COMPANY, P.A.		Sheet
SURVEYING & ENGINEERING		2
310/262-7271 • 315 ELLIS • WICHITA, KANSAS 67211		3
Design: NAW	Drawn: JEL	Scale: 1" = 40'
Approved: [Signature]	Date: [Date]	
PROJ. NO. 468-76-245-80001-000-000-193		

FILMED FROM THE BEST
AVAILABLE COPY.....

