

SANITARY SEWER IMPROVEMENTS

TO SERVE

QuikTrip 7th Addition

Private Project No. 624 PPS (607861)

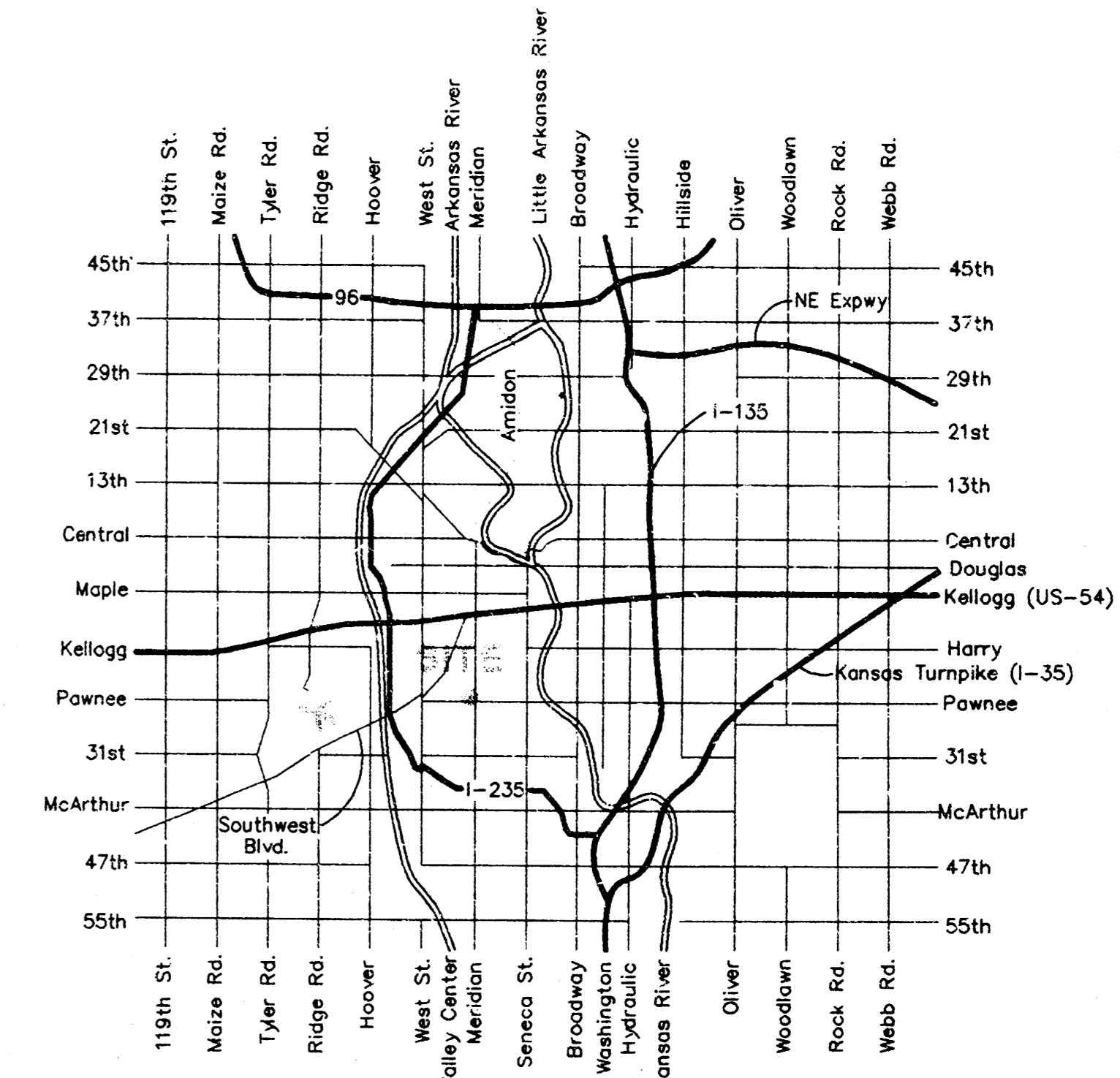
Michael E. Lindeback, P.E. City Engineer

Benchmark:

MERIDIAN & PAMNEE
CITY OF WICHITA BENCHMARK DISC - NW COR. OF
INTERSECTION, TRAFFIC SIGNAL LIGHT BASE
71.10' NW OF SEC. COR. IRON
9.1' SSW OF C. OF TRAFFIC SIGNAL MANHOLE
42.5' SW OF C. OF CURB INLET
ELEV. = 102.43 CITY DATUM

General Notes

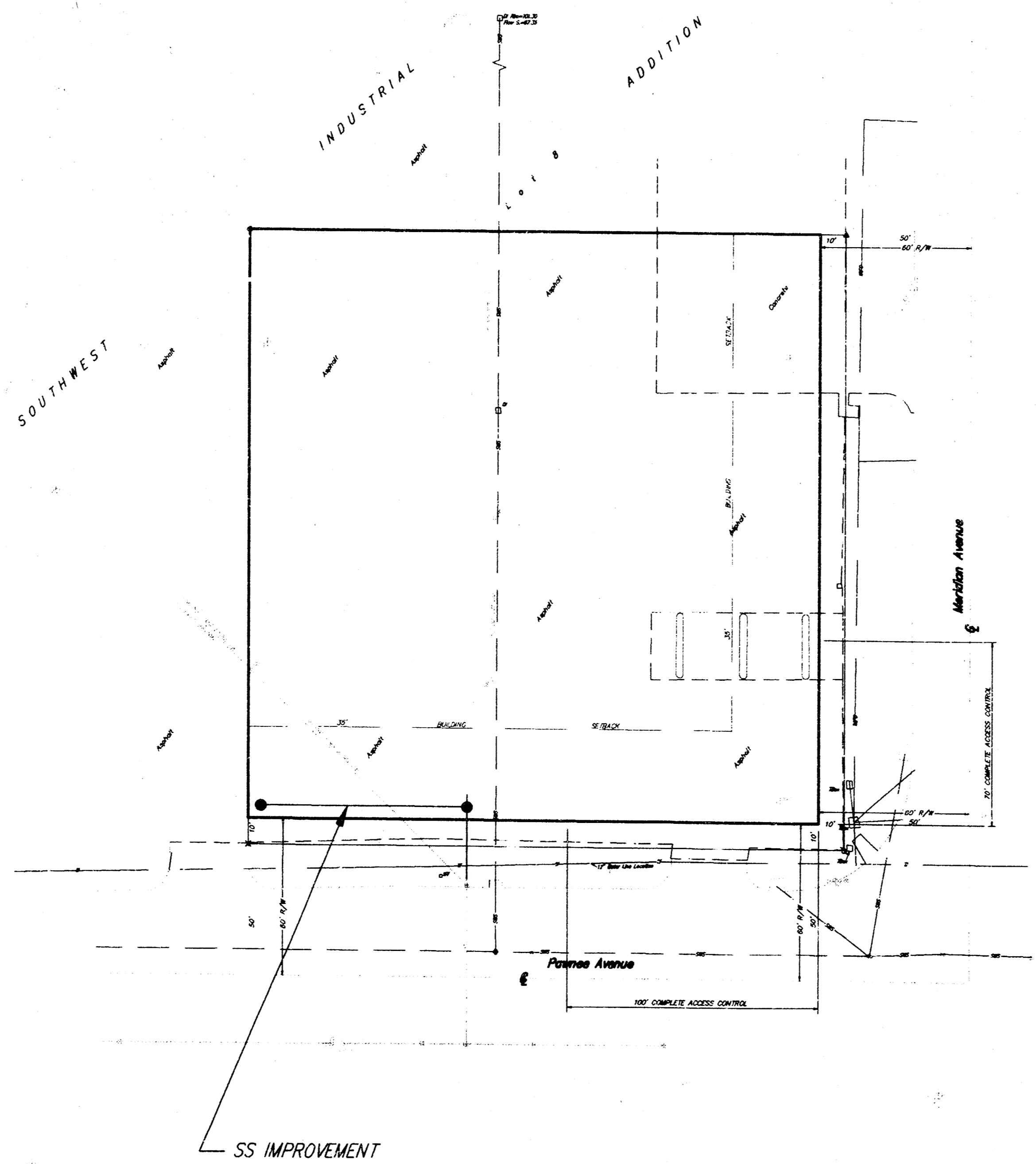
- Underground utility service lines and overhead utility pole lines are to be adjusted as necessary by others prior to construction unless the plans specifically call for their adjustment by the Contractor or unless the plans specifically identify a utility to be adjusted by its owner during construction. Existing utilities and their location, as shown on the plans, represent the best information obtainable for design. The Contractor will be required to work around existing utilities within the right-of-way which do not conflict with proposed construction.
- The Contractor shall give all property owners and/or tenants of developed property adjoining the construction of this project a minimum of five (5) days advance notice prior to start of construction.
- The Contractor shall be responsible for preserving property irons. The Contractor will be required to re-establish any property irons which are damaged or destroyed by his construction operations. Such irons shall be re-established by a licensed land surveyor in accordance with state laws.
- Contractor will be required to provide notice to utility companies a minimum of twenty-four (24) hours prior to any excavation, as follows:
 Kansas One-Call 687-2470
 The Contractor must notify the following in case of an emergency:
 K.P.L. Gas Service Company 383-8650
 Kansas Gas & Electric Company 383-8600
 Cablevision 262-4270
 or
 263-2061
 Southwestern Bell Telephone Company 1-571-2611
 City of Wichita Water Dept. 268-4008
 City of Wichita Sewer Maintenance 268-4071
- Existing utilities and their locations, as shown on the plans, represent the best information obtainable for design. Location information has been obtained from the various utility companies and is either from company record drawings or company-provided field locations. The Contractor will be required to work around existing utilities which do not conflict with proposed construction. The Contractor shall verify all utility locations prior to construction of this project.
- Contractor shall verify depth & location of existing utilities prior to construction.
- The Contractor shall be responsible for maintaining continuous flow of sewage through construction. Contractor's proposed method for maintaining sewage flow shall be approved by the Engineer. Cost of maintaining flow of sewage through construction will not be paid for directly and this cost shall be considered subsidiary to the other pay items of work.
- Disturbed areas within the street right-of-way are to be restored to the conditions existing prior to construction.



Location Map

Index of Sheets:

Title Sheet	1
Plan/Profile	2
Manhole Detail	3
Copy of Plat	4



Booked
N-258
6-17-97
RPL

APPROVED AS NOTED
BY CITY ENGINEER OF WICHITA

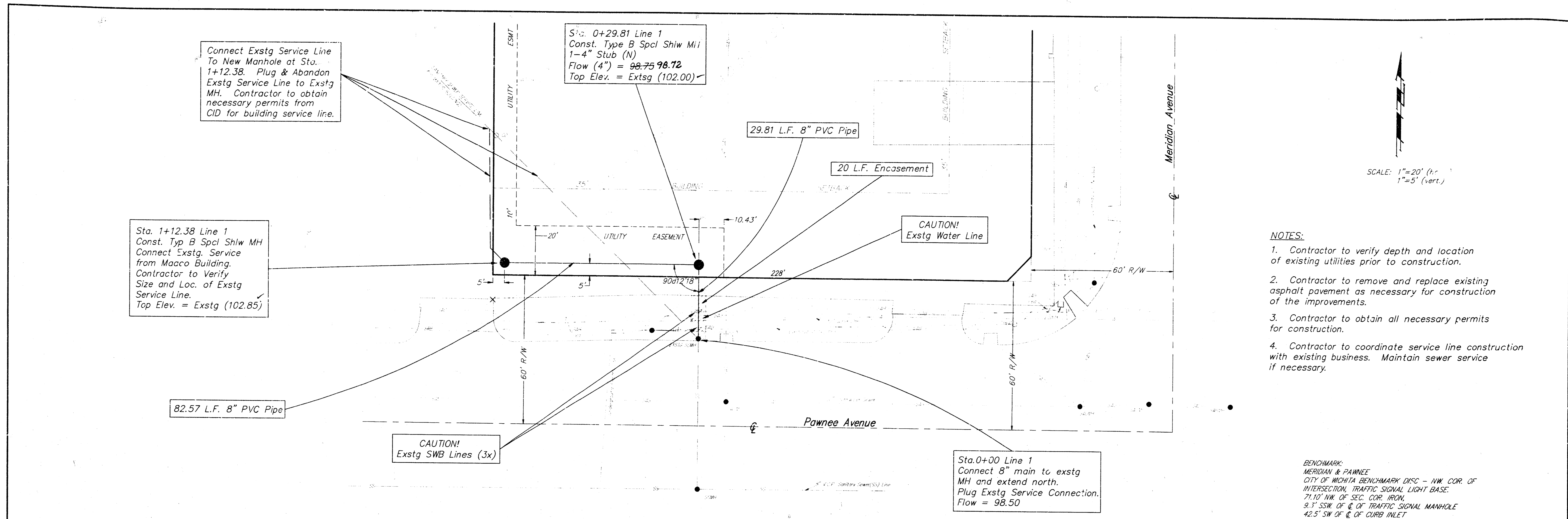
Sanitary Sewers V.R.H. 5/6/96

NOTE TO CONTRACTORS

Inspection and testing for this project is to be provided by a Licensed Consulting Engineering Firm under contract with the Owner/Developer. Said inspection to be in accordance with the City of Wichita standard construction engineering practice and certified by a Licensed Professional Engineer. It shall be performed in dedicated easements or public right-of-way by the Contractor without such inspection nor shall any work be commenced without written authorization by the City Engineer. All construction and materials shall comply with the City of Wichita Specifications and Standards (on file and available in the City Engineer's Office).

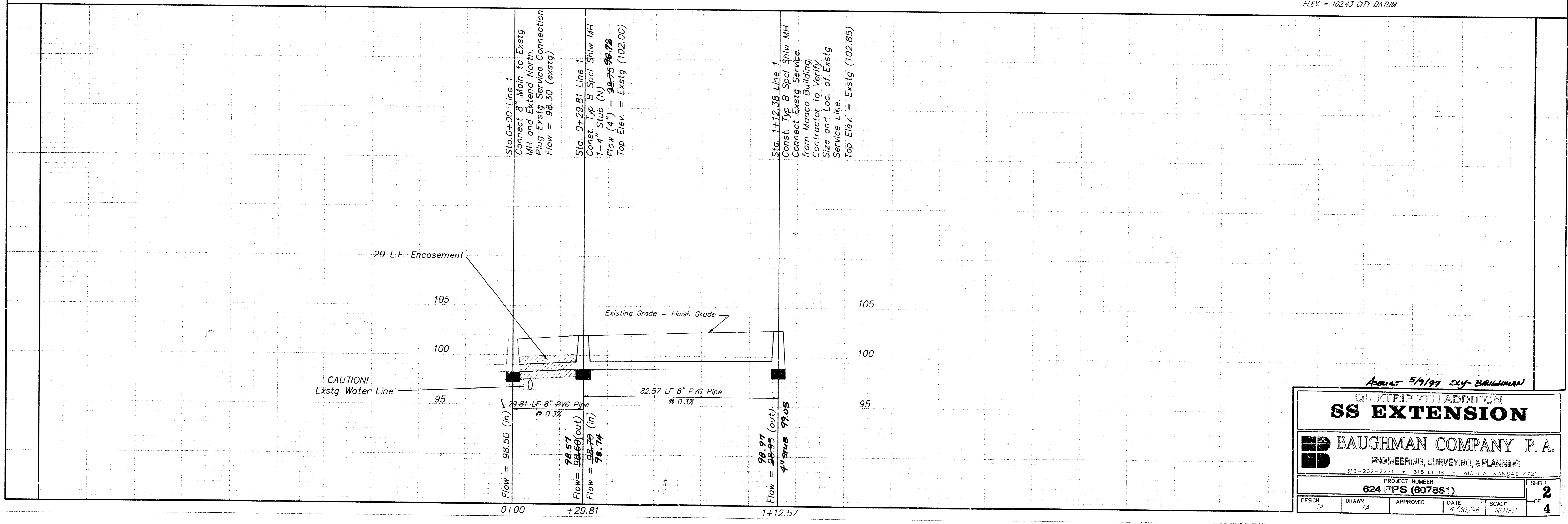
[Signature] 5/6/96

Project Inspector Lyle Powers, Baughman Co.
1200116 5/19/97 J264



- NOTES:**
1. Contractor to verify depth and location of existing utilities prior to construction.
 2. Contractor to remove and replace existing asphalt pavement as necessary for construction of the improvements.
 3. Contractor to obtain all necessary permits for construction.
 4. Contractor to coordinate service line construction with existing business. Maintain sewer service if necessary.

BENCHMARK:
 MERIDIAN & PAWNEE
 CITY OF WICHITA BENCHMARK DISC - NW COR. OF INTERSECTION, TRAFFIC SIGNAL LIGHT BASE.
 71.10' NW. OF SEC. COR. IRON.
 9.3' SSW. OF C. OF TRAFFIC SIGNAL MANHOLE
 42.5' SW OF C. OF CURB INLET
 ELEV. = 102.43 CITY DATUM

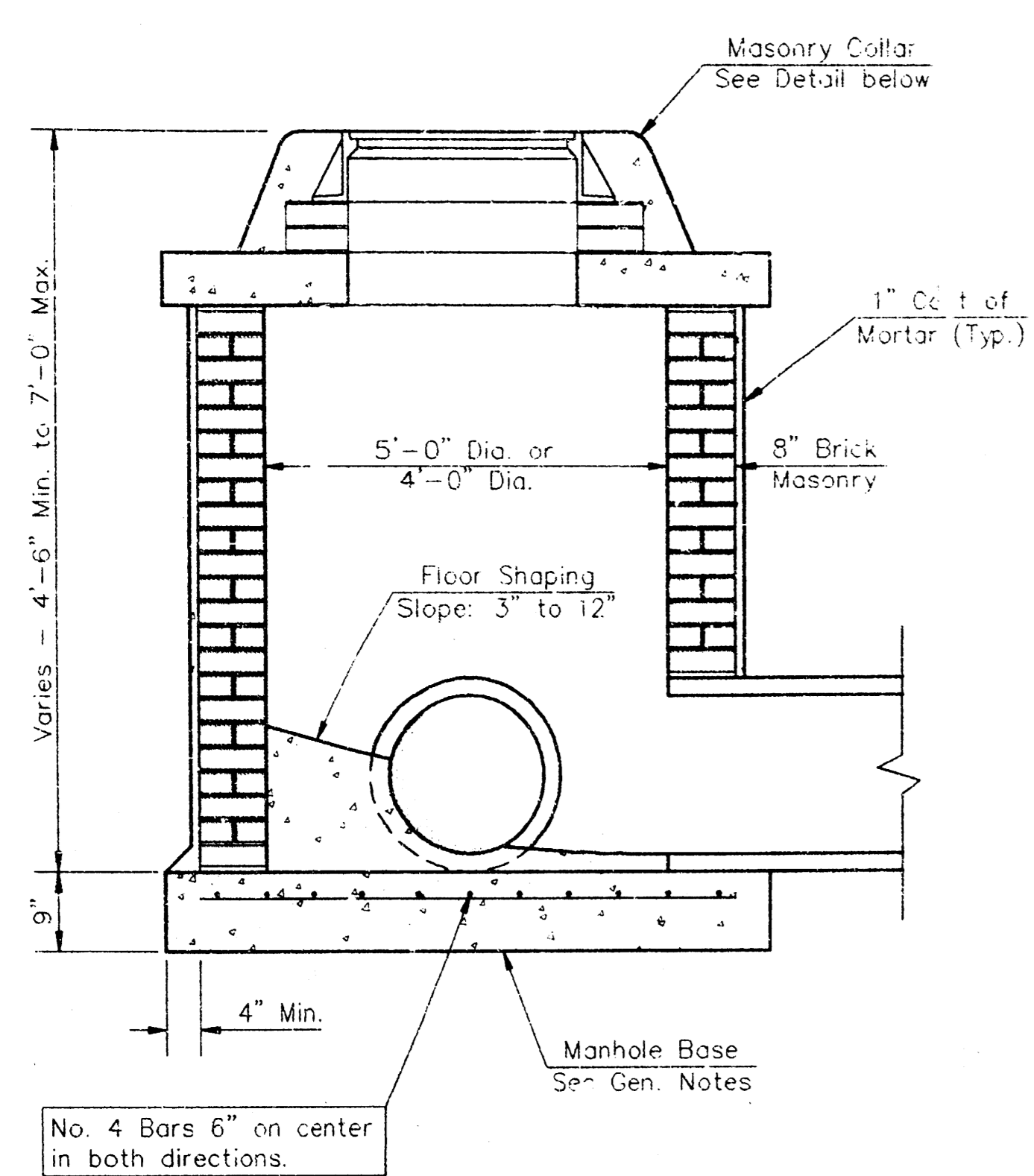


Asmt 5/1/97 DJ-BAUGHMAN

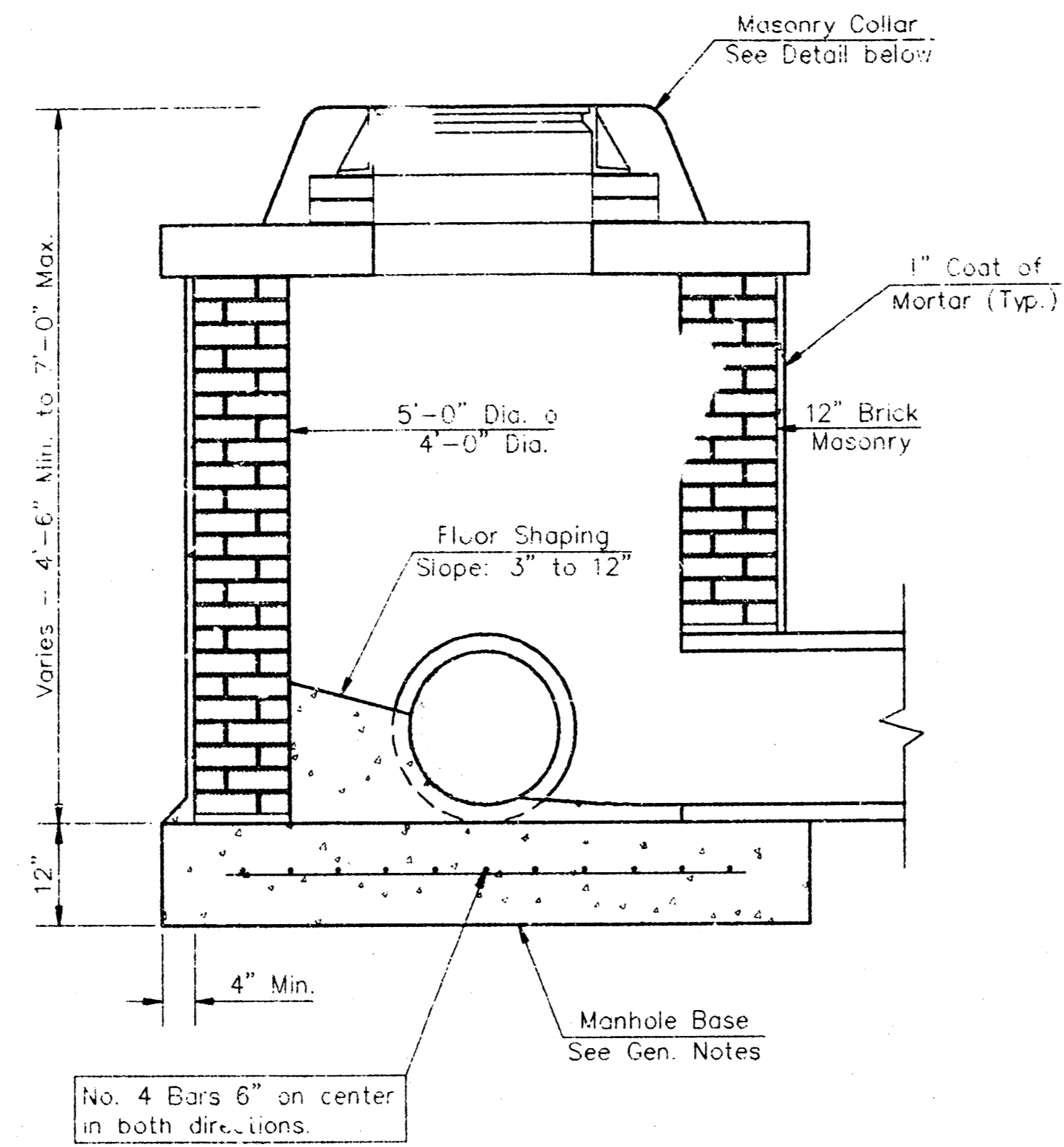
QUICKTRIP 7TH ADDITION
SS EXTENSION

BAUGHMAN COMPANY P. A.
 ENGINEERING, SURVEYING, & PLANNING
 316-262-7271 • 312 ELLIS • WICHITA, KANSAS 67201

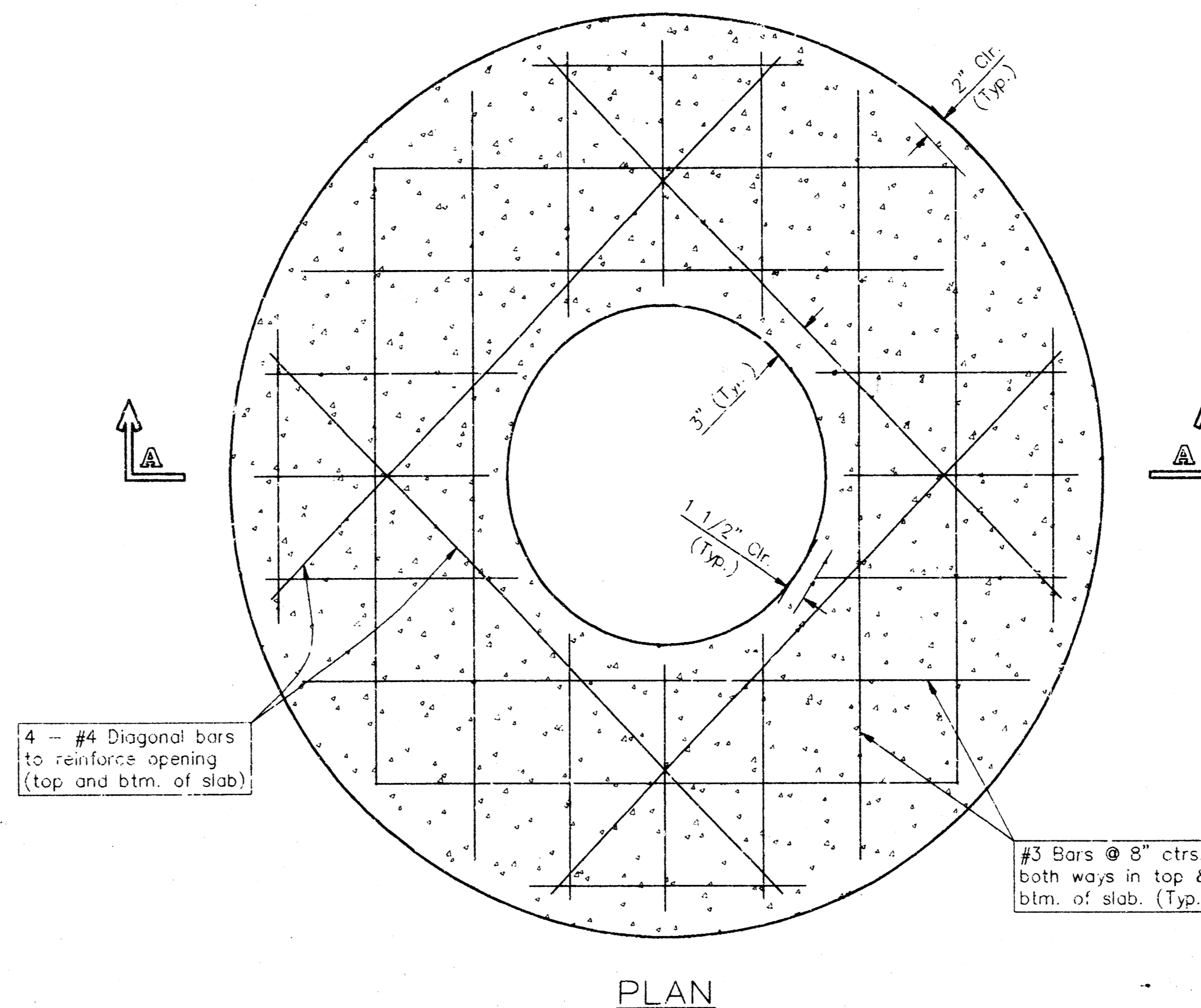
PROJECT NUMBER				SHEET
624 PPS (607851)				2
DESIGN	DRAWN	APPROVED	DATE	SCALE
2	1	[Signature]	4/30/96	H:1/2"



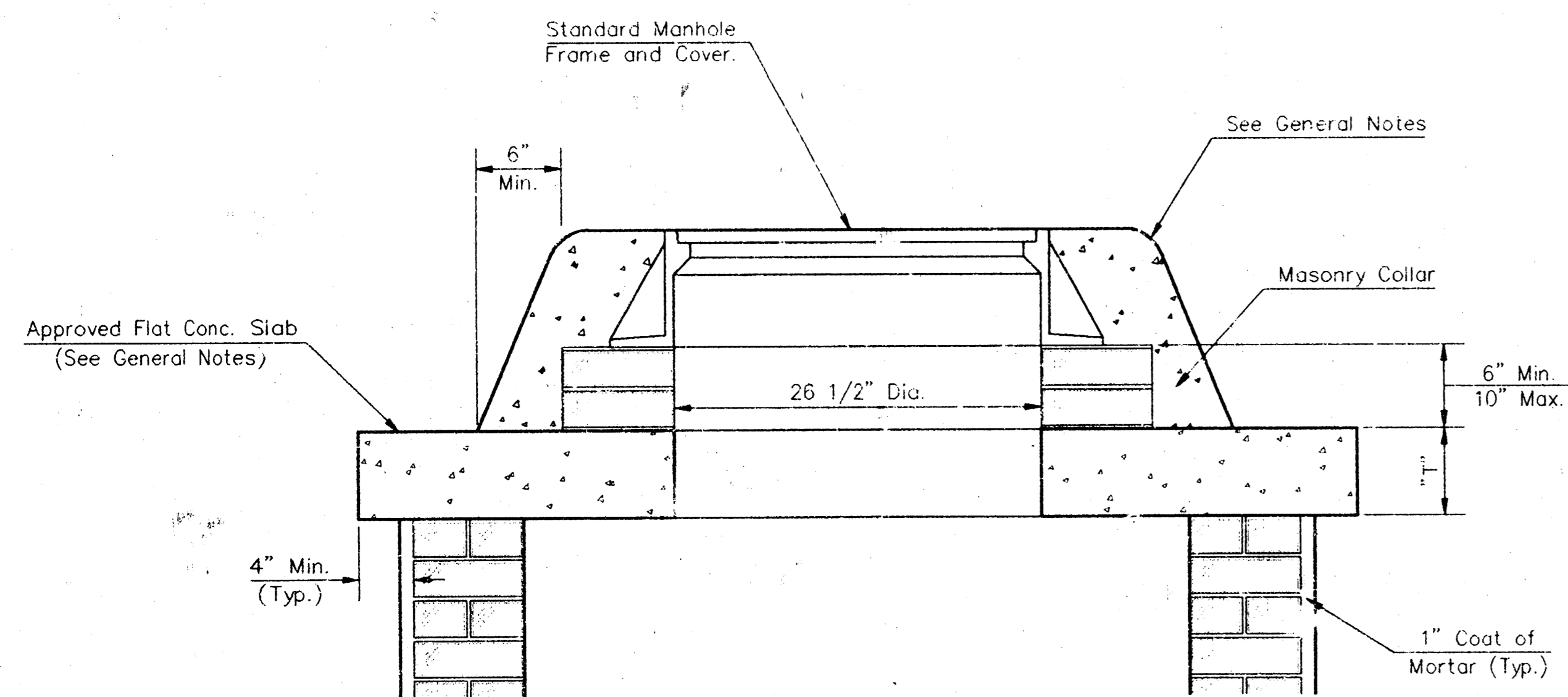
SHALLOW TYPE "A" MANHOLE



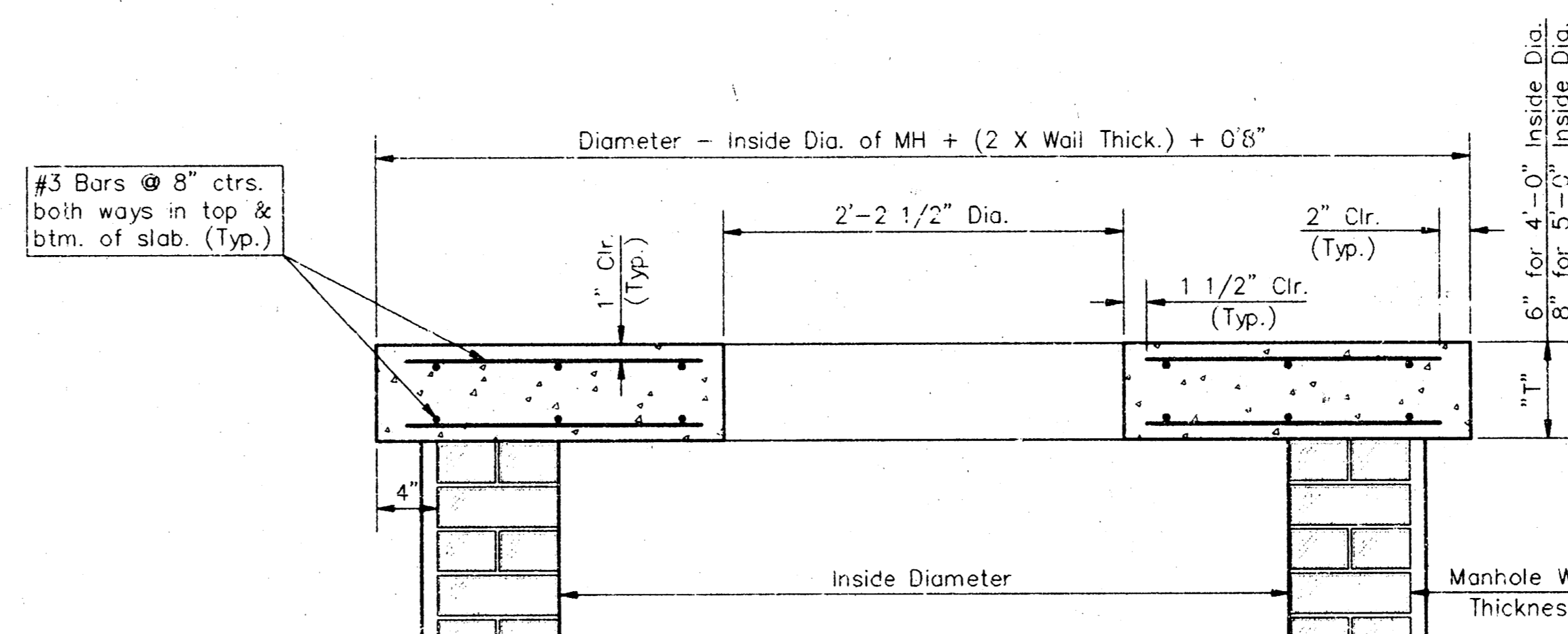
SHALLOW TYPE "B" MANHOLE



PLAN

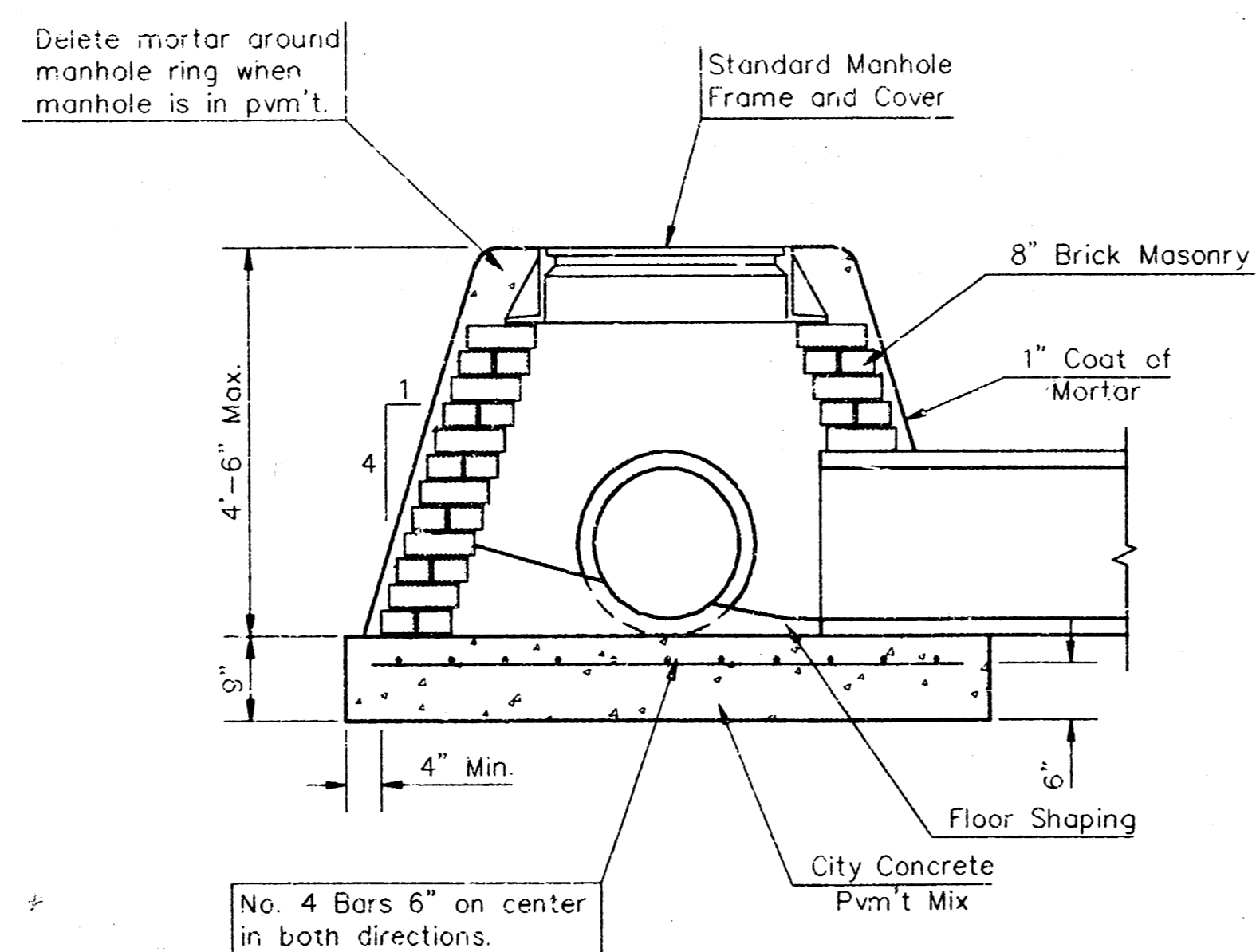


MASONRY COLLAR DETAIL

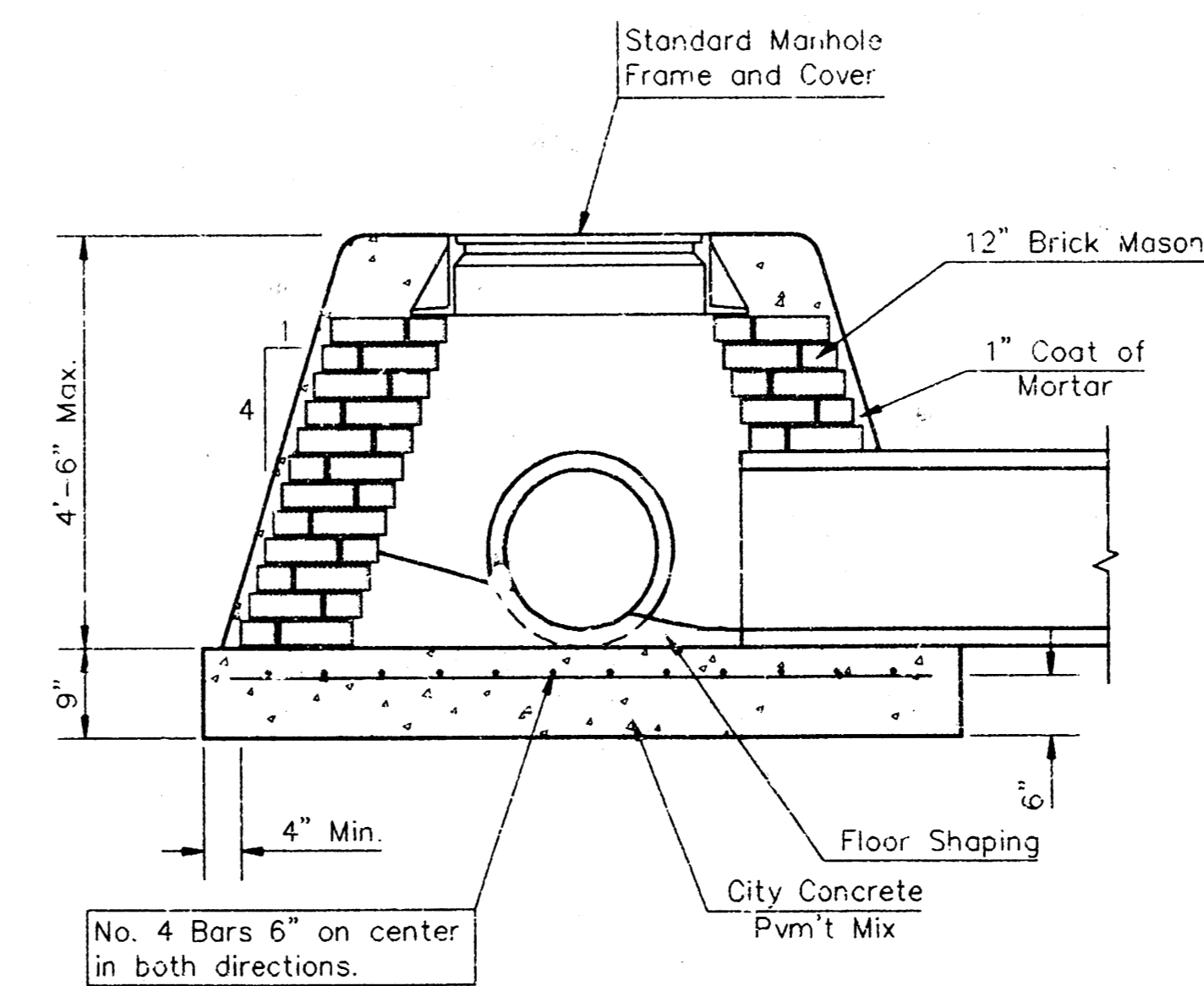


SECTION A-A

FLAT CONCRETE SLAB DETAILS



SPECIAL SHALLOW TYPE "A" MANHOLE



SPECIAL SHALLOW TYPE "B" MANHOLE

GENERAL NOTES

- Mortar used in masonry construction shall contain 8 sacks of cement per cubic yard. Concrete used in manhole bases shall conform to the requirements of concrete for concrete pavement construction as specified in the city standard paving specifications using city concrete cement mix without air entraining admixture. Mortar shall be placed around the manhole ring as shown on the drawings when manholes are constructed in unpaved areas. Type "A" shallow manholes can be used on sewers when the manhole is not located within public street pavement. Manholes constructed where pipe sizes are smaller than 24" shall have an inside diameter of 4". Manholes constructed where pipe sizes are 24" or larger shall have an inside diameter of 5". Completed manhole shall be without leaks and water tight.
- Reinforcing steel shall be installed in the manhole bases and shall consist of no. 4 bars placed on 6" centers in both directions. The manhole base reinforcement shall be placed 6" above the bottom of the manhole base. All costs for furnishing and installing reinforcing steel shall be included in the unit price bid for the manhole.
- The floors of all manholes shall be shaped with flow channels such that the manholes will be self cleaning and free of areas where solids could be deposited as sewage flows through the manhole from all inlet pipes to the outlet pipe. Flow channels shall be formed to match the bottom halves of the inflowing pipes and the outflowing pipe as shown by the drawings. Manhole floors shall have slopes of 3 inches per foot in the areas outside of the flow channels sloped toward the flow channels. Pipes laid through manholes shall have the top half removed to neat lines for the full inside diameter of the manhole. Manhole floors shall then be shaped around the bottom half of the pipe which forms the flow channel.
- Pipes installed within the excavation made for the manhole shall be cradled with concrete to the limits of the manhole excavation. When clay pipe is used, the cradle shall extend to the first joint outside the manhole. The cradle shall be terminated at the clay pipe joint in a manner which will maintain the flexibility of the joint. Cost of cradle within manhole excavation or to clay pipe joints adjacent to manhole shall be included in the unit price bid for the manhole.
- Manhole cover castings and manhole frame castings shall conform to the requirements as indicated in the standard specifications and as shown in the standard detail drawings.
- The crowns of inflowing pipes shall never be set lower than the crown of the outflowing pipe.
- Standard shallow manholes type "A" and "B" shall be paid for at the unit price bid per each for the type and diameter indicated. Standard special shallow manholes type "A" and "B" shall be paid for at the unit price bid per each for the type indicated. All standard shallow manhole diameters will be 4' unless indicated otherwise.
- All brick used in manhole construction shall meet Grade SW of ASTM C652 or C62-87.

CITY OF WICHITA, KANSAS
STD. SHALLOW MANHOLES
 TYPE "A" AND TYPE "B"

BAUGHMAN COMPANY P. A.
 ENGINEERING, SURVEYING, & PLANNING
 318-262-7221 • 315 ELLIS • WICHITA, KANSAS 67211

DESIGN	DRAWN	APPROVED	DATE	SCALE	SHEET
C.O.W.	Staff				3
					OF 4

