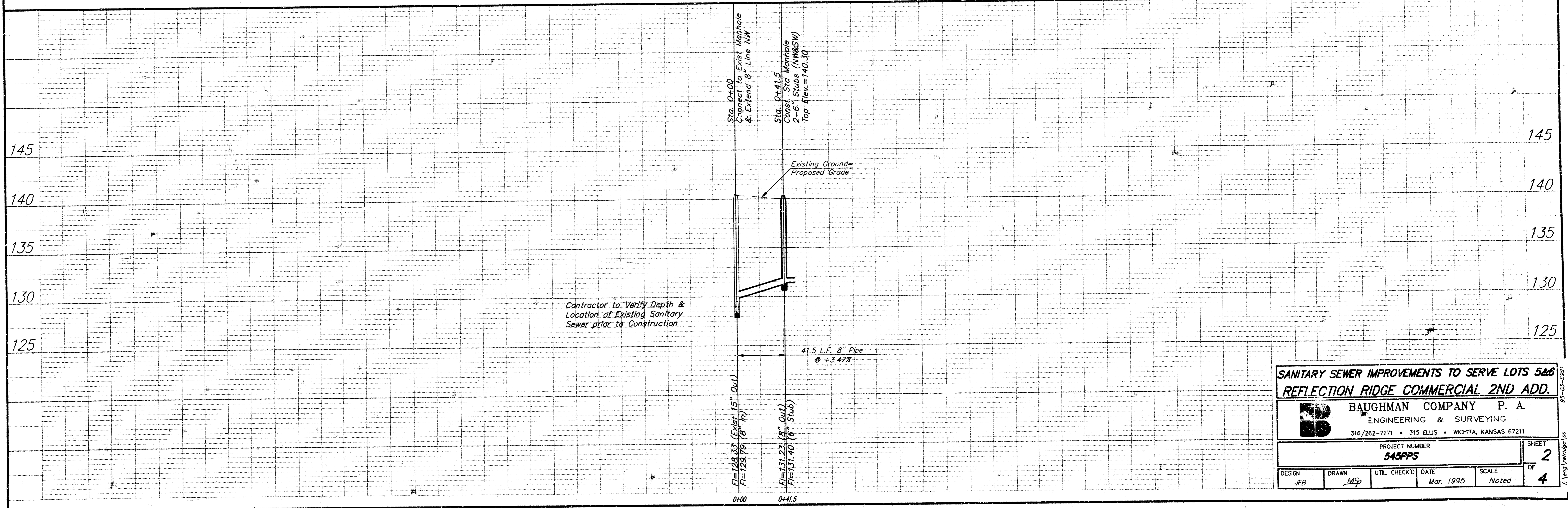
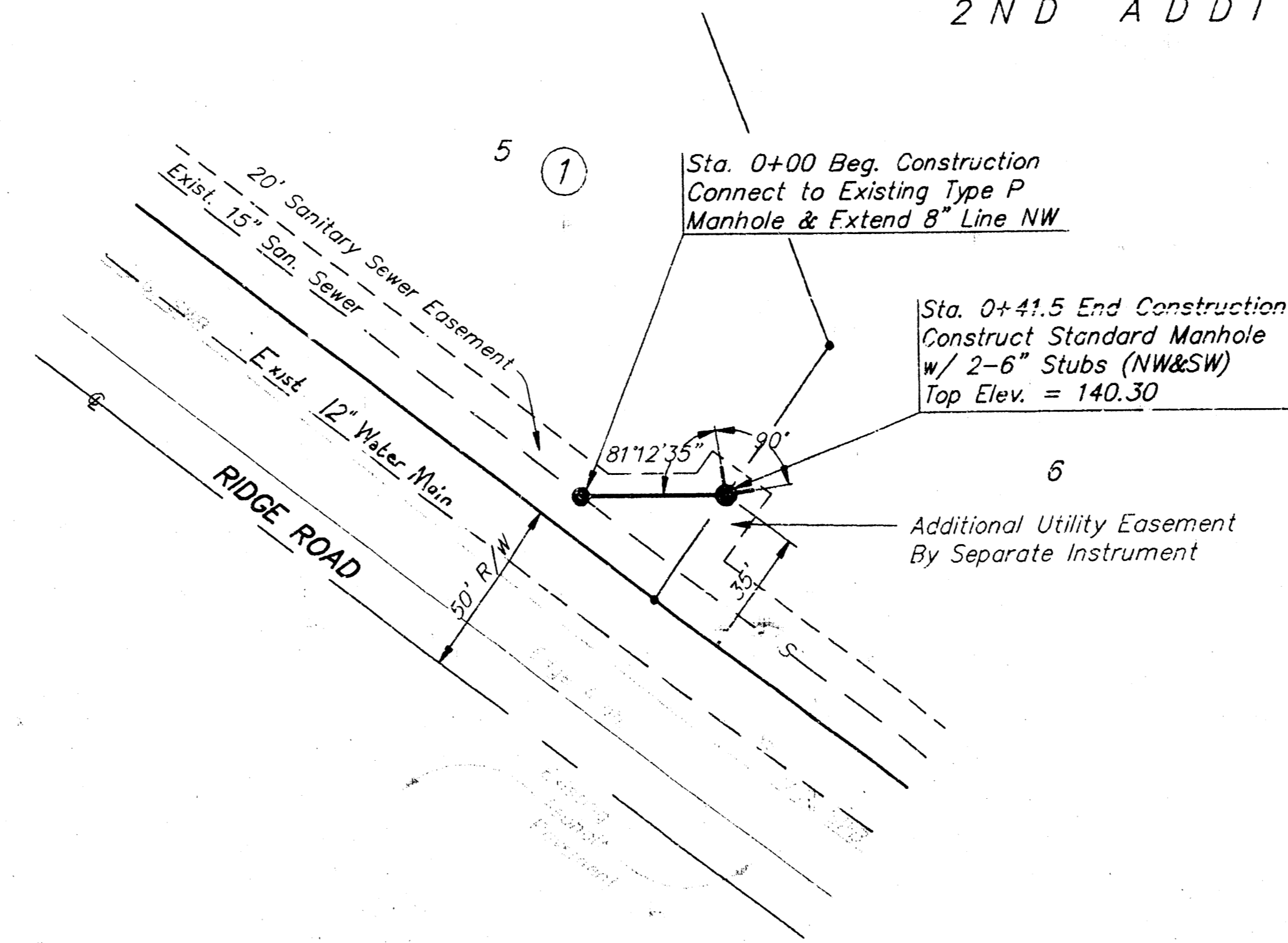


Benchmark
 R.R. Spike in SW Side of Power Pole
 75' North and 58' East of the C's of
 Ridge Road and 21st Street North
 Elev. = 1330.70 (M.S.L.)
 143.30 (City Datum)

REFLECTION RIDGE COMMERCIAL
 2ND ADDITION

Scale: 1" = 40' Horizontal
 1" = 5' Vertical
 • = Iron

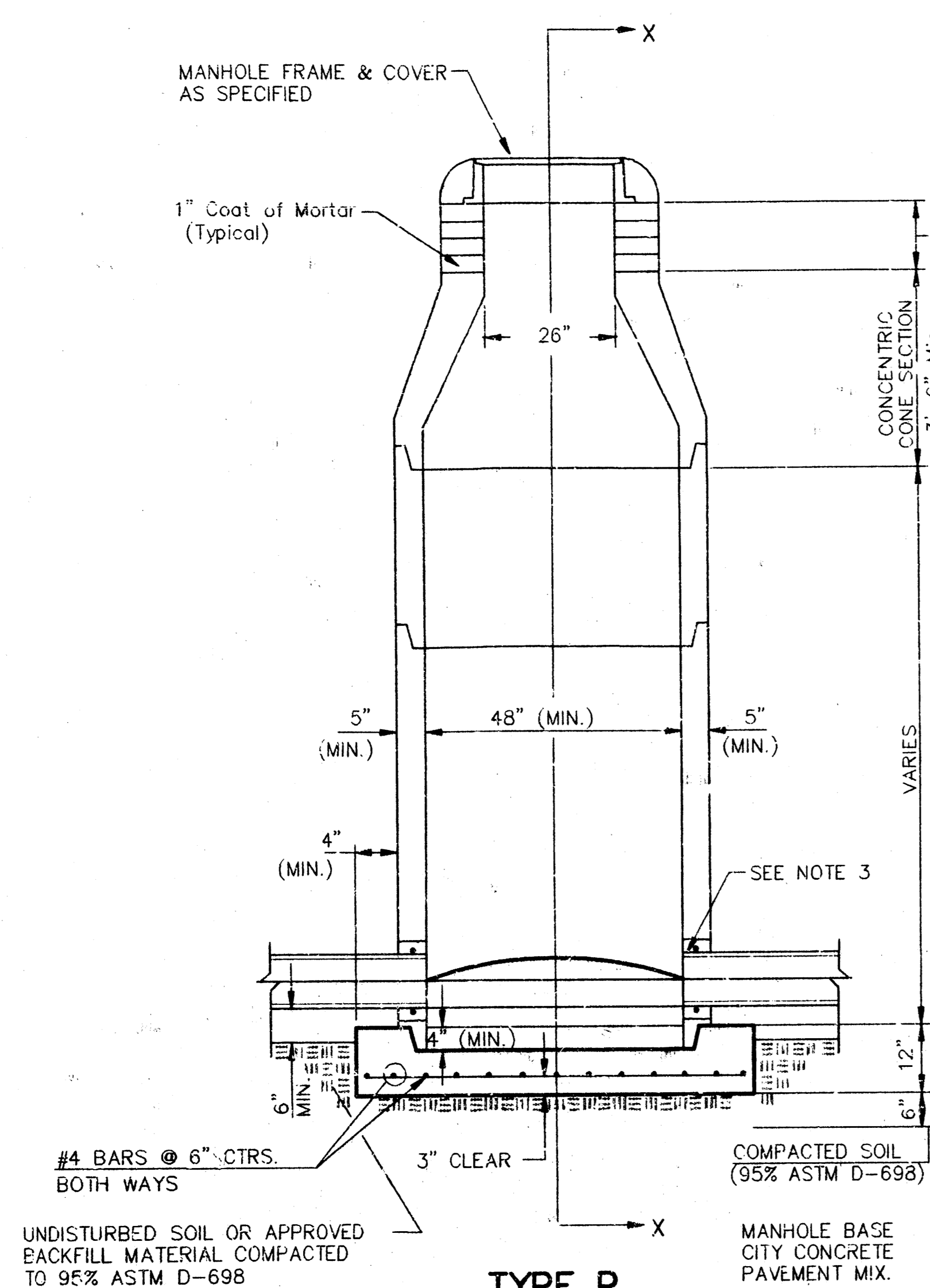


SANITARY SEWER IMPROVEMENTS TO SERVE LOTS 546
 REFLECTION RIDGE COMMERCIAL 2ND ADD.

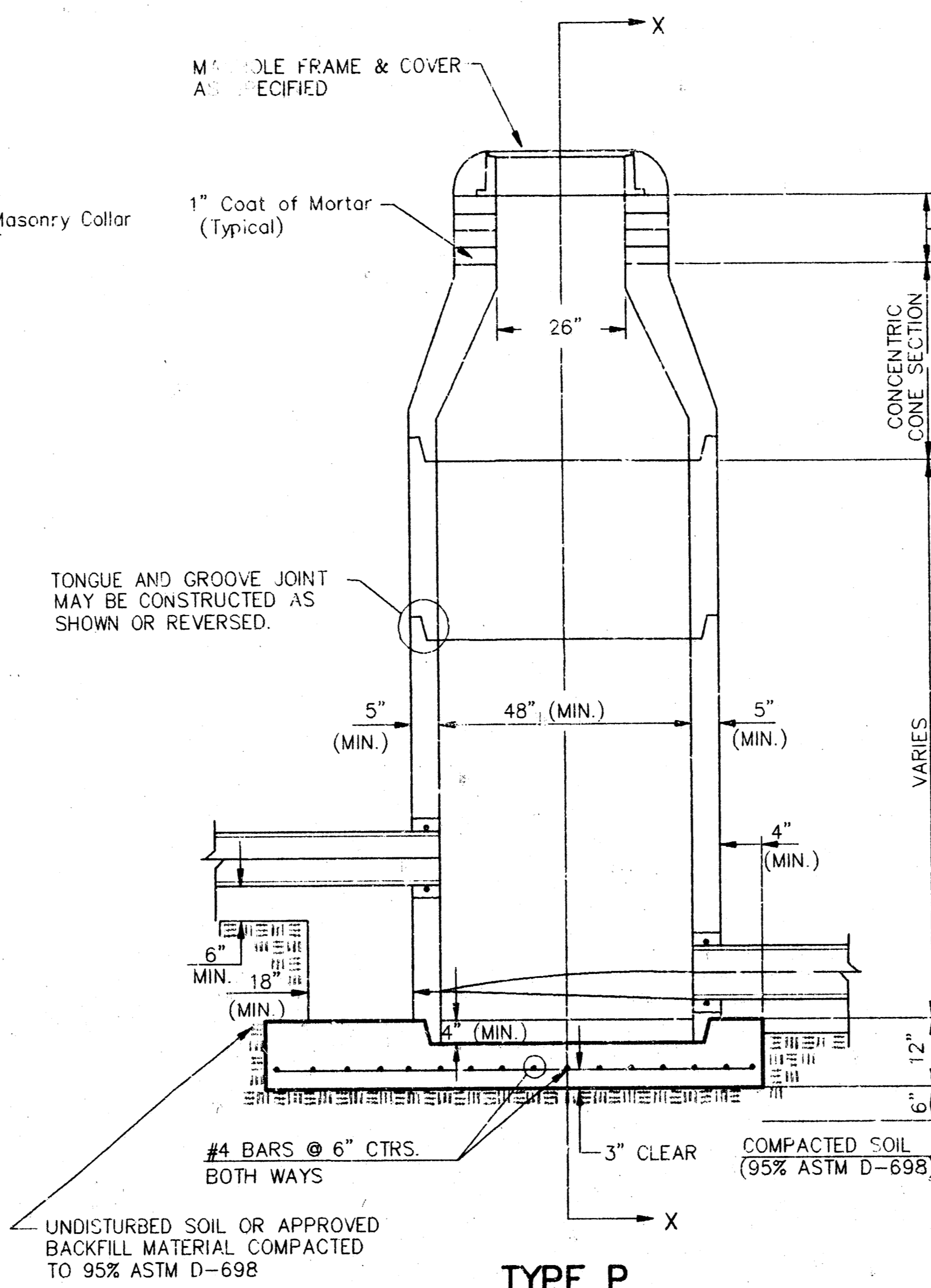
BAUGHMAN COMPANY P. A.
 ENGINEERING & SURVEYING
 316/262-7271 • 315 ILLIS • WICHITA, KANSAS 67211

PROJECT NUMBER 545PPS		SHEET 2
DESIGN JFB	DRAWN MSP	SCALE Noted
UTIL. CHECK'D	DATE Mar. 1995	OF 4

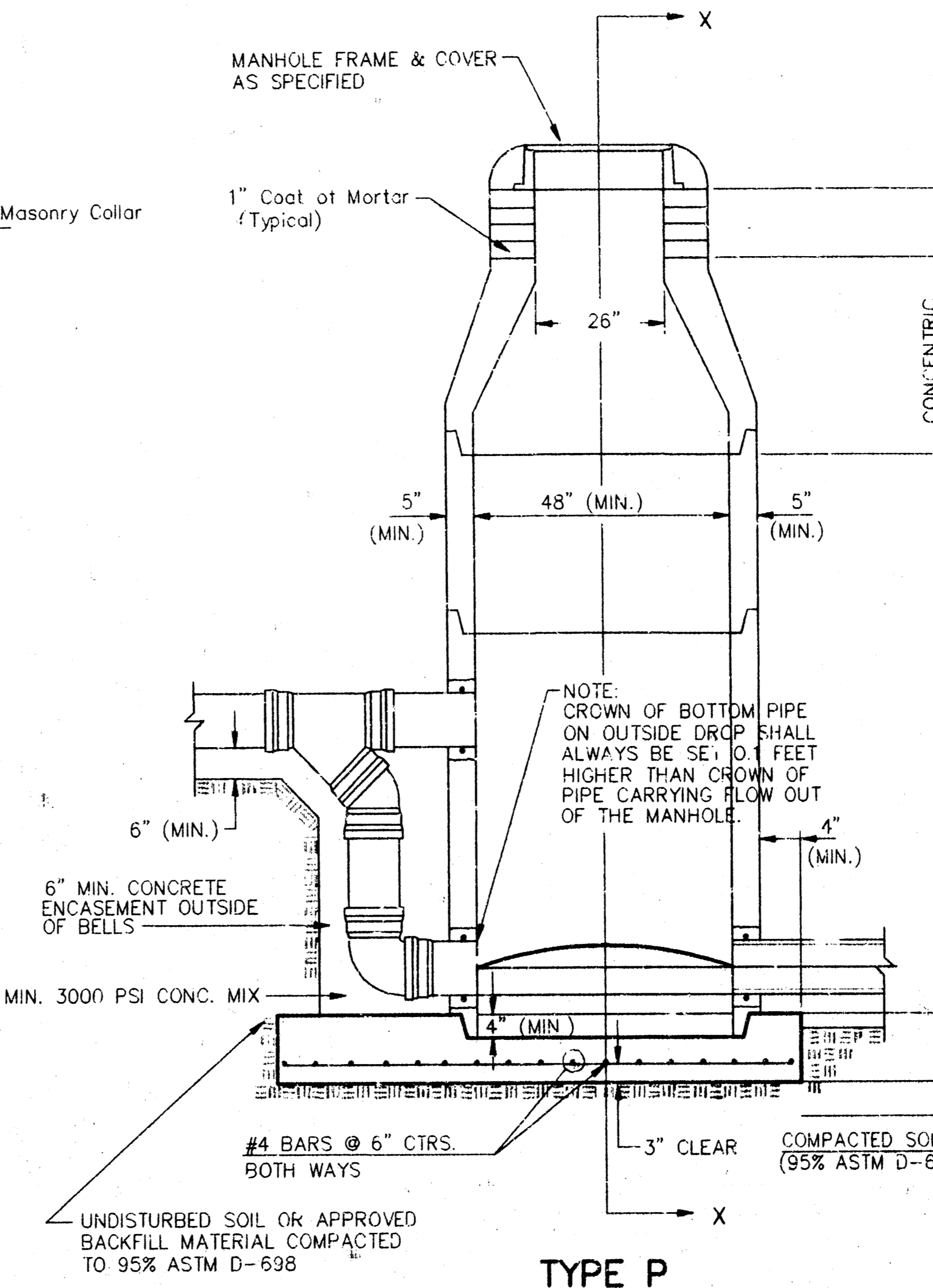
SEWER APPURTENANCES DETAILS



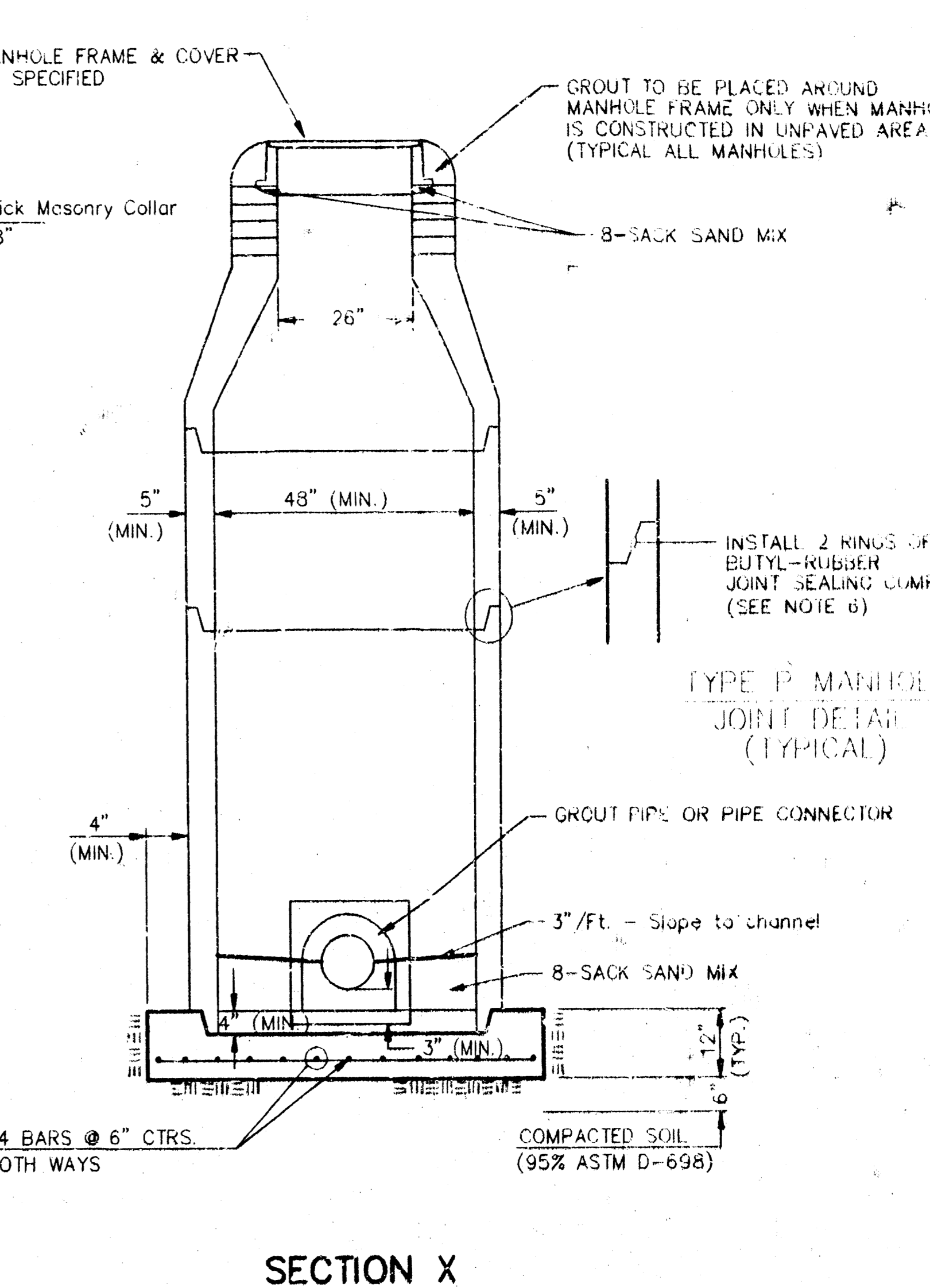
TYPE P STANDARD MANHOLE



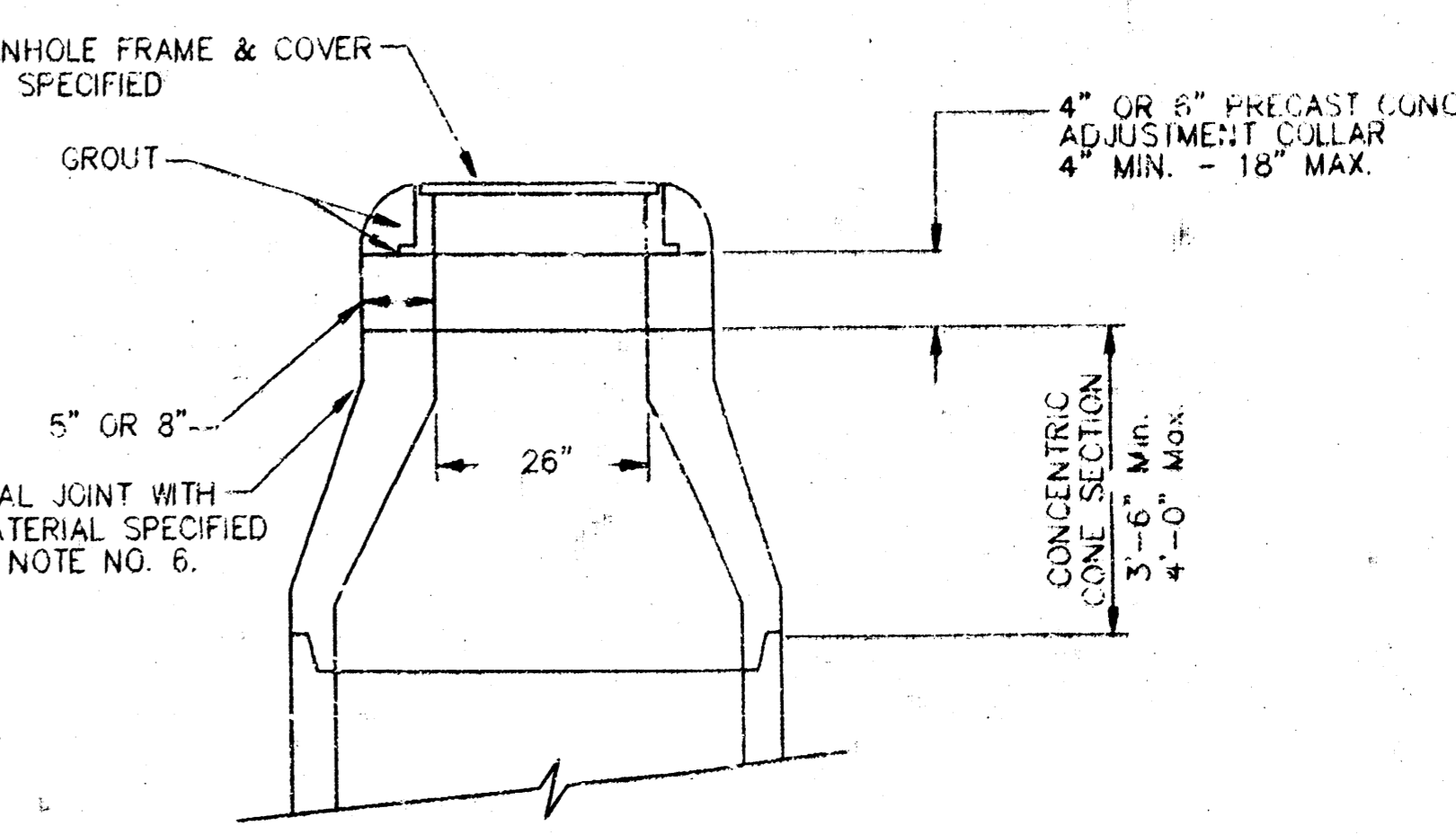
TYPE P INSIDE DROP MANHOLE



TYPE P OUTSIDE DROP MANHOLE



SECTION X (TYPICAL)



ALTERNATE CONSTRUCTION IN UNPAVED AREAS

- GENERAL NOTES**
- PRECAST MANHOLE NOTES**
- ALL PRECAST CONCRETE MANHOLE SECTIONS SHALL CONFORM TO THE LATEST REVISIONS OF A.S.T.M. C478 AS MODIFIED BY THE SPECIFICATIONS.
 - NON-SHRINK GROUT SHALL BE NON-METALLIC TYPE.
 - APPROVED FLEXIBLE WATERSTOP GASKETS SHALL BE INSTALLED TO JOIN THE SEWER TO THE MANHOLE WALL WHEN A.B.S. COMPOSITE PIPE OR P.V.C. PIPE IS USED. FOR OTHER TYPES OF PIPE THE SEWER SHALL BE GROUTED IN PLACE WITH NON-SHRINK GROUT. THE SEWER PIPE SHALL BE SUPPORTED WITH CONCRETE ENCASEMENT A MINIMUM OF 3 FEET FROM THE MANHOLE WALL AND TO THE FIRST JOINT FOR V.C.P. SUCH THAT THE JOINT REMAINS FLEXIBLE.
 - ALL INSIDE SURFACES OF THE CONCRETE MANHOLE WHICH WOULD BE EXPOSED TO SEWER GAS SHALL BE COATED WITH 3 COATS NEMEC SERIES 66 HI-BUILD EPOXYLINE, DRY THICKNESS OF 8 MILS (MIN.).
 - EXTERIOR MANHOLE WALLS SHALL BE COATED WITH 1 COAT MOBILARMA 633 BITUMINOUS COATING.
 - JOINT SEALING COMPOUND SHALL BE KENT SEAL NO. 2 OR APPROVED EQUAL.
 - PRECAST MANHOLES SHALL BE SET AT LEAST 4 INCHES INTO THE MANHOLE BASE.
 - TOP OF MANHOLE FLOOR SLAB SHALL BE AT LEAST 3 INCHES BELOW THE FLOW LINE OF THE OUTLET PIPE TO INSURE SUFFICIENT MINIMUM THICKNESS OF SHAPED INVERT.
 - LIFTING HOLES SHALL BE FILLED WITH NON-SHRINK GROUT AND THE INTERIOR SURFACE COATED AS SPECIFIED.
 - MORTAR USED IN MASONRY CONSTRUCTION SHALL CONTAIN 8 SACKS OF CEMENT PER CUBIC YARD. CONCRETE USED IN MANHOLE BASES SHALL CONFORM TO THE REQUIREMENTS OF CONCRETE FOR CONCRETE PAVEMENT CONSTRUCTION AS SPECIFIED IN THE CITY STANDARD PAVING SPECIFICATIONS USING CITY CONCRETE PAVEMENT MIX WITHOUT AIR ENTRAINING ADMIXTURE. MORTAR SHALL BE PLACED AROUND THE MANHOLE RING AS SHOWN ON THE DRAWINGS WHEN MANHOLES ARE CONSTRUCTED IN UNPAVED AREAS. MANHOLES CONSTRUCTED WHERE PIPE SIZES ARE SMALLER THAN 24" SHALL HAVE AN INSIDE DIAMETER OF 4". MANHOLES CONSTRUCTED WHERE PIPE SIZES ARE 24" OR LARGER SHALL HAVE AN INSIDE DIAMETER OF 5". COMPLETED MANHOLE SHALL BE WITHOUT LEAKS AND WATER TIGHT.

- REINFORCING STEEL SHALL BE INSTALLED IN THE MANHOLE BASES AND SHALL CONSIST OF NO. 4 BARS PLACED ON 6" CENTERS IN BOTH DIRECTIONS. THE MANHOLE BASE REINFORCEMENT SHALL BE PLACED AT LEAST 3" ABOVE THE BOTTOM OF THE MANHOLE BASE. ALL COSTS FOR FURNISHING AND INSTALLING REINFORCING STEEL SHALL BE INCLUDED IN THE UNIT PRICE BID FOR THE MANHOLE.
- OPENINGS SHALL BE CUT INTO THE MANHOLE WALL WHEN OUTSIDE DROPS ARE CONSTRUCTED ON EXISTING MANHOLES. SUCH OPENINGS CUT INTO EXISTING MANHOLES SHALL BE AS SMALL AS PRACTICAL TO FACILITATE INSTALLING AND GROUTING THE NEW PIPE IN PLACE. WATERSTOP GASKETS SHALL BE USED WITH P.V.C. AND A.B.S. COMPOSITE PIPE. THE NEW PIPE SHALL BE GROUTED INTO THE OPENING USING AN APPROVED NONSHRINK GROUT FOR THE FULL MANHOLE WALL THICKNESS. THE EXTERIOR OF THE COMPLETED CONNECTION SHALL BE SEALED WITH AN APPROVED BITUMINOUS COATING SUCH THAT THE CONNECTION WILL BE WATER TIGHT. FLOOR OF MANHOLE SHALL BE MODIFIED TO FORM NEW FLOW CHANNEL FOR THE NEW CONNECTION AS INDICATED BY THE DRAWING. THIS WORK, INCLUDING MODIFICATION OF MANHOLE FLOOR, SHALL BE PAID FOR AT THE UNIT PRICE BID FOR OUTSIDE DROP STACK CONSTRUCTED ON EXISTING MANHOLE.
- THE FLOORS OF ALL MANHOLES SHALL BE SHAPED WITH FLOW CHANNELS SUCH THAT THE MANHOLES WILL BE SELF CLEANING AND FREE OF AREAS WHERE SOLIDS COULD BE DEPOSITED AS SEWAGE FLOWS THROUGH THE MANHOLE FROM ALL INLET PIPES TO THE OUTLET PIPE. FLOW CHANNELS SHALL BE FORMED TO MATCH THE BOTTOM HALVES OF THE INFLOWING PIPES AND THE OUTFLOWING PIPE AS SHOWN BY THE DRAWINGS EXCEPT FOR INSIDE DROP MANHOLES. FLOW CHANNELS FOR INSIDE DROP MANHOLES SHALL BE CONSTRUCTED AS INDICATED BY THE DRAWING. MANHOLE FLOORS SHALL HAVE SLOPES OF 3 INCHES PER FOOT IN THE AREAS OUTSIDE OF THE FLOW CHANNELS SLOPED TOWARD THE FLOW CHANNELS. PIPES LAID THROUGH MANHOLES SHALL HAVE THE TOP HALF REMOVED TO NEAT LINES FOR THE FULL INSIDE DIAMETER OF THE MANHOLE. MANHOLE FLOORS SHALL THEN BE SHAPED AROUND THE BOTTOM HALF OF THE PIPE WHICH FORMS THE FLOW CHANNEL.
- PIPES INSTALLED WITHIN THE EXCAVATION MADE FOR THE MANHOLE SHALL BE CRADLED WITH CONCRETE TO THE LIMITS OF THE MANHOLE EXCAVATION. WHEN CLAY PIPE IS USED, THE CRADLE SHALL EXTEND TO THE FIRST JOINT OUTSIDE THE MANHOLE. THE CRADLE SHALL BE TERMINATED AT THE CLAY PIPE JOINT IN A MANNER WHICH WILL MAINTAIN THE FLEXIBILITY OF THE JOINT. COSTS OF CRADLE WITHIN MANHOLE EXCAVATION OR TO CLAY PIPE JOINTS ADJACENT TO MANHOLE SHALL BE INCLUDED IN THE UNIT PRICE BID FOR THE MANHOLE.

- MANHOLE COVER CASTINGS AND MANHOLE FRAME CASTINGS SHALL CONFORM TO THE REQUIREMENTS AS INDICATED IN THE STANDARD SPECIFICATIONS AND AS SHOWN IN THE STANDARD DETAIL DRAWING.
- THE VERTICAL DROP IN INSIDE DROP MANHOLES SHALL NOT EXCEED 2' FOR INFLOWING PIPES SIZES 12" OR SMALLER AND 2' FOR INFLOWING PIPES LARGER THAN 12". THE CROWNS OF INFLOWING PIPES SHALL NEVER BE SET LOWER THAN THE CROWN OF THE OUTFLOWING PIPE.
- STANDARD MANHOLES AND STANDARD INSIDE DROP MANHOLES SHALL BE BID AS STANDARD MANHOLES FOR THE TYPE AND DIAMETER INDICATED. OUTSIDE DROP MANHOLES SHALL BE BID AS STANDARD OUTSIDE DROP MANHOLES FOR THE TYPE AND DIAMETER INDICATED. ALL MANHOLE DIAMETERS WILL BE 4' UNLESS INDICATED OTHERWISE.
- A BRICK MASONRY COLLAR SHALL BE INSTALLED BETWEEN THE CAST IRON FRAME AND THE CONCENTRIC CONE. THE COLLAR WILL HAVE 8" WALLS AND A VERTICAL HEIGHT OF 6" MINIMUM AND 18" MAXIMUM. A 1" COAT OF MORTAR WILL BE PLASTERED ON THE OUTSIDE OF THE COLLAR. THE USE OF PRE-CAST CONCRETE SPACERS FOR MANHOLE TOP ADJUSTMENT IS ALSO ALLOWED.

- NOTE: CROWN OF BOTTOM PIPE ON OUTSIDE DROP SHALL ALWAYS BE SET 10 FEET HIGHER THAN CROWN OF PIPE CARRYING FLOW OUT OF THE MANHOLE.
- INSTALL 2 RINGS OF BUTYL-RUBBER JOINT SEALING COMPOUND (SEE NOTE 6)
- GROUT PIPE OR PIPE CONNECTOR
- 3"/FT. - Slope to channel
- 8-SACK SAND MIX
- 4" (MIN.)
- 3" (MIN.)
- 4" (MIN.)
- 6" (MIN.)
- 6" MIN. CONCRETE ENCASEMENT OUTSIDE OF BELLS
- MIN. 3000 PSI CONC. MIX
- #4 BARS @ 6" CTRS. BOTH WAYS
- 3" CLEAR
- COMPACTED SOIL (95% ASTM D-698)
- UNDISTURBED SOIL OR APPROVED BACKFILL MATERIAL COMPACTED TO 95% ASTM D-698

CITY OF WICHITA, KANSAS
STANDARD MANHOLE DETAILS
SEWER APPURTENANCES DETAILS

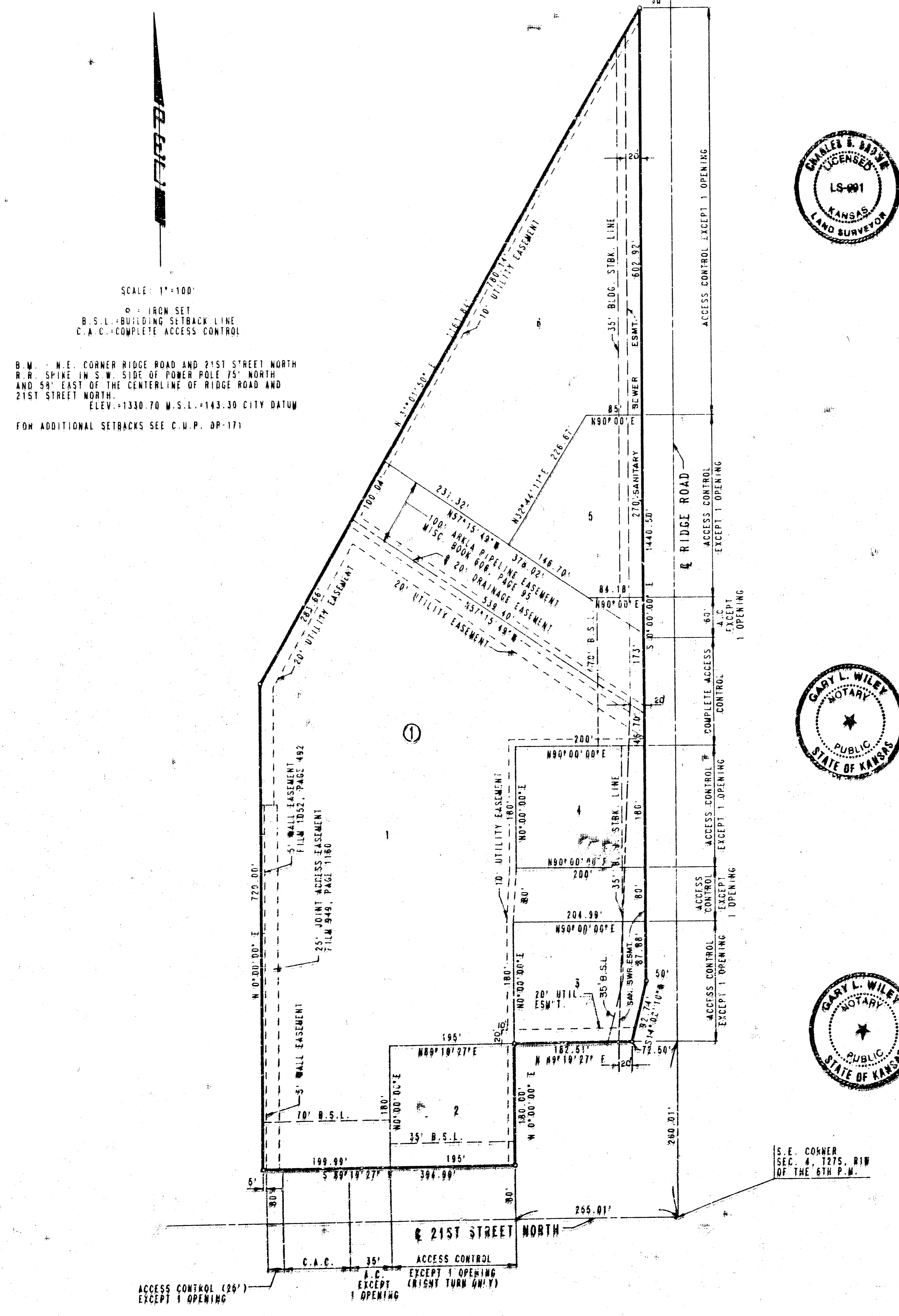
BAUGHMAN COMPANY P. A.
 ENGINEERING & SURVEYING
 316/252-7271 • 316 ELLIS • WICHITA, KANSAS 67211

PROJECT NUMBER
545PPS

DESIGN: JFB DRAW: JSP UTIL. CHECK'D: DATE: Mar. 1995 SCALE: None

SHEET 3 OF 4

REFLECTION RIDGE COMMERCIAL 2ND ADDITION TO WICHITA, SEDGWICK COUNTY, KANSAS



B.M. - N.E. CORNER RIDGE ROAD AND 21ST STREET NORTH
R.R. SPIKE IN S.W. SIDE OF POWER POLE 75' NORTH
AND 58' EAST OF THE CENTERLINE OF RIDGE ROAD AND
21ST STREET NORTH. ELEV. +1330.70 W.S.L. +143.30 CITY DATUM
FOR ADDITIONAL SETBACKS SEE C.U.P. DP-171



STATE OF KANSAS)
COUNTY OF SEDGWICK) SS

I, CHARLES S. BROWN, A REGISTERED LAND SURVEYOR IN AFORESAID STATE AND COUNTY, DO HEREBY CERTIFY THAT ON THIS 3rd DAY OF February, 1990, I HAVE CAUSED TO BE SURVEYED AND PLATTED REFLECTION RIDGE COMMERCIAL 2ND ADDITION TO WICHITA, SEDGWICK COUNTY, KANSAS, INTO LOTS, AND A BLOCK, THE SAME BEING A REPLAT OF LOTS 15 AND 16, BLOCK 2, IN REFLECTION RIDGE COMMERCIAL AN ADDITION TO WICHITA, SEDGWICK COUNTY, KANSAS.

Charles S. Brown
CHARLES S. BROWN, P.E., LIC. NO. 7581; R.L.S. NO. 991
PROFESSIONAL ENGINEERING CONSULTANTS, P.A.

KNOW ALL MEN BY THESE PRESENTS THAT WE, THE UNDERSIGNED PROPERTY OWNERS OF THE LAND, AS ABOVE SET FORTH IN THE SURVEYOR'S CERTIFICATE, HAVE CAUSED THE LAND TO BE SURVEYED AND PLATTED INTO LOTS, AND A BLOCK, THE SAME TO BE KNOWN AS REFLECTION RIDGE COMMERCIAL 2ND ADDITION TO WICHITA, SEDGWICK COUNTY, KANSAS; EASEMENTS AS INDICATED FOR THE CONSTRUCTION AND MAINTENANCE OF PUBLIC UTILITIES AND DRAINAGE ARE HEREBY GRANTED.

ALL ABUTTERS' RIGHTS OF ACCESS TO AND FROM RIDGE ROAD AND 21ST STREET NORTH OVER AND ACROSS THE EAST AND SOUTH SIDES OF BLOCK 1 ARE HEREBY GRANTED TO THE CITY OF WICHITA, PROVIDED HOWEVER THAT LOT 1 SHALL HAVE ACCESS TO RIDGE ROAD AT TWO (2) LOCATIONS AND THAT LOTS 3, 4, 5, AND 6 SHALL HAVE ACCESS TO RIDGE ROAD AT ONE (1) LOCATION EACH. THAT LOT 1 SHALL HAVE ACCESS TO 21ST STREET NORTH AT TWO (2) LOCATIONS AND THAT LOT 3 SHALL HAVE ACCESS TO 21ST STREET NORTH AT ONE (1) LOCATION ON RIGHT TURN BASIS ONLY. ALL LOCATIONS TO BE DETERMINED BY THE CITY ENGINEER OF THE CITY OF WICHITA, KANSAS.

THE 5-FOOT WALL EASEMENT, AS SHOWN, IS HEREBY PLATTED FOR THE CONSTRUCTION AND MAINTENANCE OF A PRIVATE WALL. UTILITIES MAY CROSS THE WALL EASEMENT.

ALL PORTIONS OF REFLECTION RIDGE COMMERCIAL WITHIN THE ABOVE DESCRIBED TRACT OF LAND ARE HEREBY VACATED AND REPLATTED BY VIRTUE OF K.S.A. 12-512(a) AMENDED. FOR ADDITIONAL SETBACKS SEE C.U.P. DP-171 ON FILE WITH THE WICHITA, SEDGWICK COUNTY METROPOLITAN AREA PLANNING DEPARTMENT.

OWNER: REFLECTION RIDGE, INC.
BY Marvin Schellenberg
MARVIN SCHELLENBERG, VICE-PRESIDENT

STATE OF KANSAS)
COUNTY OF SEDGWICK) SS

BE IT REMEMBERED ON THIS 3rd DAY OF February, 1990, BEFORE ME, A NOTARY PUBLIC IN AFORESAID STATE AND COUNTY, CAME MARVIN SCHELLENBERG, VICE-PRESIDENT OF REFLECTION RIDGE, INC. TO ME PERSONALLY KNOWN TO BE THE SAME PERSON WHO EXECUTED THE FOREGOING INSTRUMENT OF WRITING AND DULY ACKNOWLEDGED THE EXECUTION OF SAME FOR AND ON BEHALF OF SAID CORPORATION, IN TESTIMONY WHEREOF I HAVE HERETO SET MY HAND AND AFFIXED MY NOTARIAL SEAL THE DAY AND YEAR ABOVE WRITTEN.

Sam L. Miller NOTARY PUBLIC
MY COMMISSION EXPIRES Jan. 3, 1993

WE, EMPRISE BANK IN WICHITA, KANSAS, HOLDER OF A MORTGAGE ON THE ABOVE DESCRIBED PROPERTY, DO HEREBY CONSENT TO THE PLATTING OF REFLECTION RIDGE COMMERCIAL 2ND ADDITION TO WICHITA, SEDGWICK COUNTY, KANSAS.

Gregg L. Lesh
GREGG L. LESH, SENIOR VICE-PRESIDENT

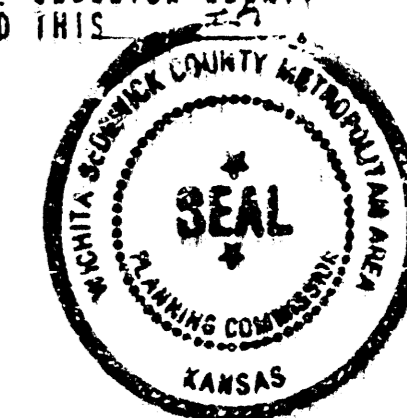
STATE OF KANSAS)
COUNTY OF SEDGWICK) SS

BE IT REMEMBERED ON THIS 13th DAY OF February, 1990, BEFORE ME, A NOTARY PUBLIC IN AFORESAID STATE AND COUNTY, CAME GREGG L. LESH, SENIOR VICE-PRESIDENT OF EMPRISE BANK WICHITA, KANSAS, TO ME PERSONALLY KNOWN TO BE THE SAME PERSON WHO EXECUTED FOREGOING INSTRUMENT OF WRITING AND DULY ACKNOWLEDGED THE EXECUTION OF SAME FOR AND ON BEHALF OF SAID CORPORATION, IN TESTIMONY WHEREOF I HAVE HERETO SET MY HAND AND AFFIXED MY NOTARIAL SEAL THE DAY AND YEAR ABOVE WRITTEN.

Sam L. Miller NOTARY PUBLIC
MY COMMISSION EXPIRES Jan. 3, 1993

THIS PLAT HAS BEEN SUBMITTED TO AND APPROVED BY THE WICHITA, SEDGWICK COUNTY METROPOLITAN AREA PLANNING COMMISSION, WICHITA, KANSAS DATED THIS DAY OF February, 1990.

George D. Sherman CHAIRMAN
Marvin S. Krotz SECRETARY



THIS PLAT APPROVED AND ALL DEDICATIONS SHOWN HEREON ARE ACCEPTED BY THE CITY COUNCIL OF THE CITY OF WICHITA, KANSAS. DATED THIS 3rd DAY OF February, 1990.

Bob Knight MAYOR
Pat Burnett DEPUTY CITY CLERK



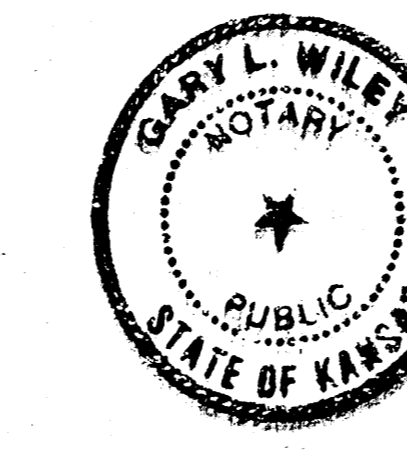
ENTERED ON TRANSFER RECORD THIS 30 DAY OF July, 1991.

Don Wright COUNTY CLERK

THIS IS TO CERTIFY THAT THIS INSTRUMENT WAS FILED FOR RECORD IN THE REGISTER OF DEEDS OFFICE AT Wichita, ON THIS 3rd DAY OF February, 1990.

Pat Kettler REGISTER OF DEEDS

Ed Resa DEPUTY



2000 L