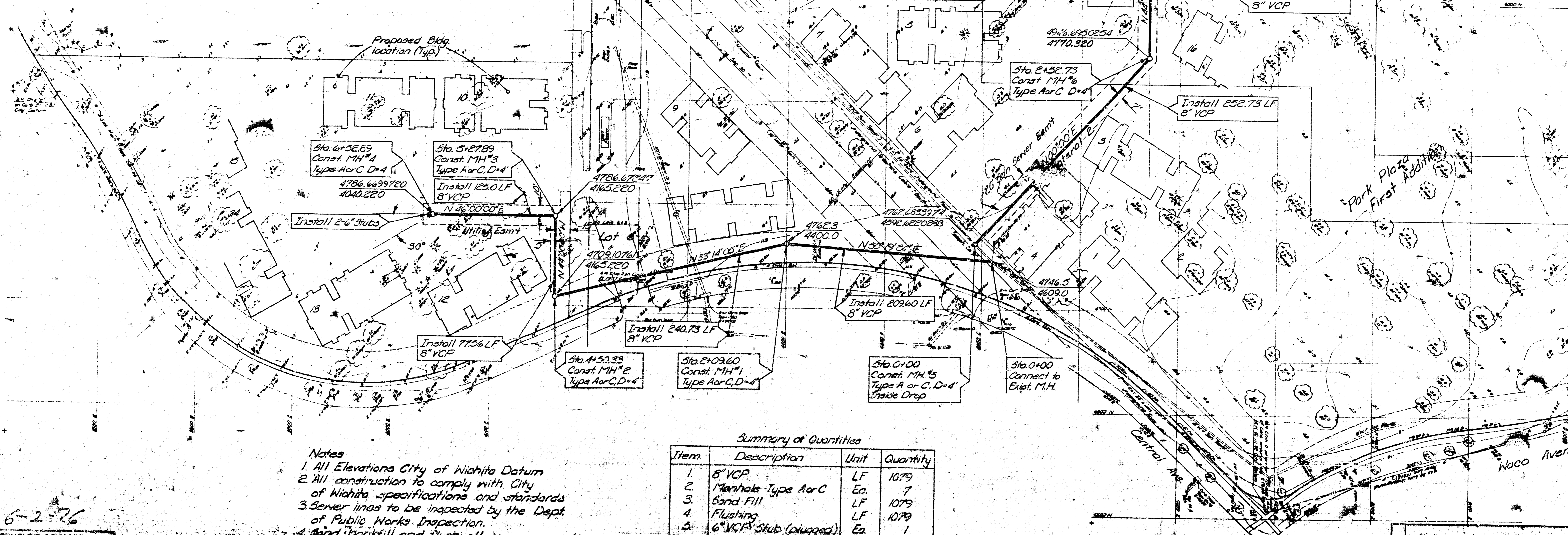


All coordinates based on Assumed North  
All bearings based on True North

Scale:  
Plan: 1"=50'  
Profile:  
Horiz: 1"=50'  
Vert: 1"=5'



- Notes
1. All Elevations City of Wichita Datum
  2. All construction to comply with City of Wichita specifications and standards
  3. Sewer lines to be inspected by the Dept. of Public Works Inspection.
  4. Sand backfill and flush all sewer excavations.

Summary of Quantities

Item	Description	Unit	Quantity
1.	8" VCP	LF	1079
2.	Manhole Type A or C	Ea.	7
3.	Sand Fill	LF	1079
4.	Flushing	LF	1079
5.	6" VCP Stub (plugged)	Ea.	1
6.	Driveway Removed	SF	300
7.	Driveway Replaced	SF	300

6-2-76

APPROVED AS NOTED  
BY CITY ENGINEER OF WICHITA  
DATE: 5-1-76

NOTE TO CONTRACTOR  
THIS PROJECT WILL BE CONSTRUCTED  
UNDER THE SUPERVISION OF THE CITY ENGINEER



City Project No. DBN  
RIVERPARK APART  
SEWERS