

950 RRS

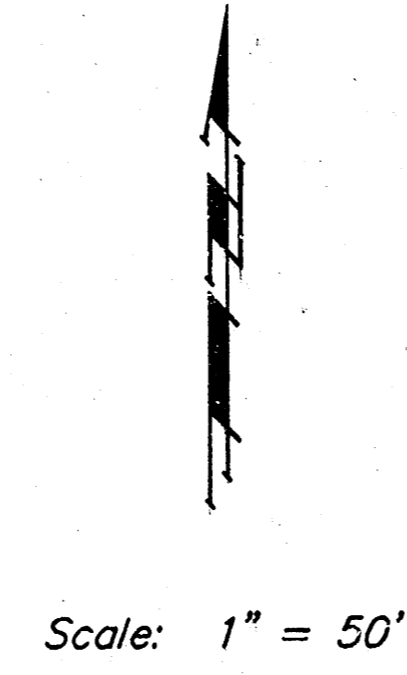
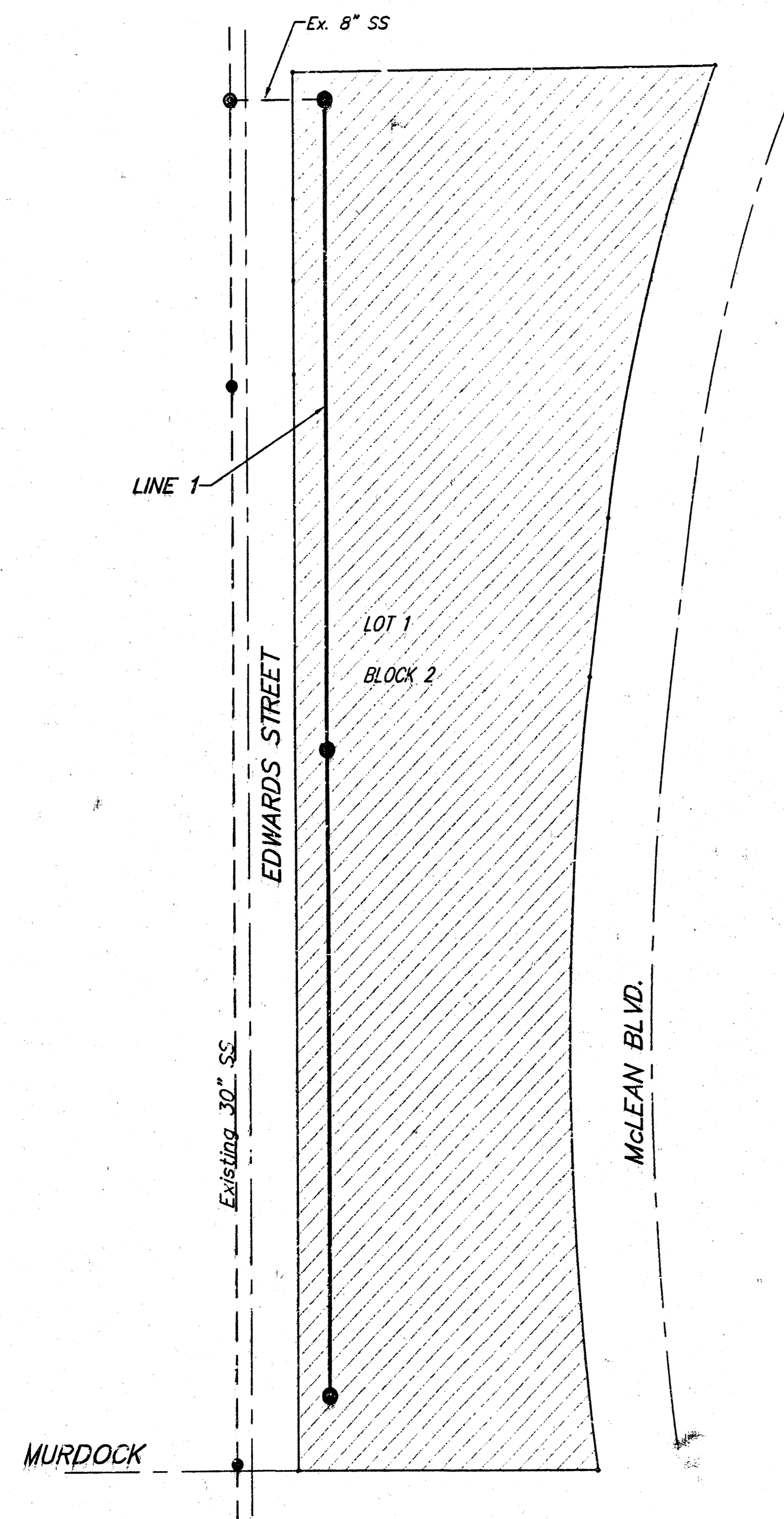
# SANITARY SEWER EXTENSION TO SERVE RIVERSIDE HEALTH SYSTEM 3RD ADDITION

Private Project Number  
**952 PPS(607861)**

**CITY OF WICHITA, KANSAS**

Michael E. Lindebak, P.E. City Engineer

**NOVEMBER, 1999**



### BENCHMARKS

- "□" Located on top of curb on West side of McLean Blvd. and South right-of-way line of vacated Murdock.  
Elevation = 115.91 City Datum
- City standard disc 42.3' South & 35.8' West of centerlines of Central & Meridian  
Elevation = 116.31 City Datum

### GENERAL NOTES:

- Contractor will be required to provide notice to utility companies a minimum of twenty-four (24) hours prior to any excavation, as follows:  

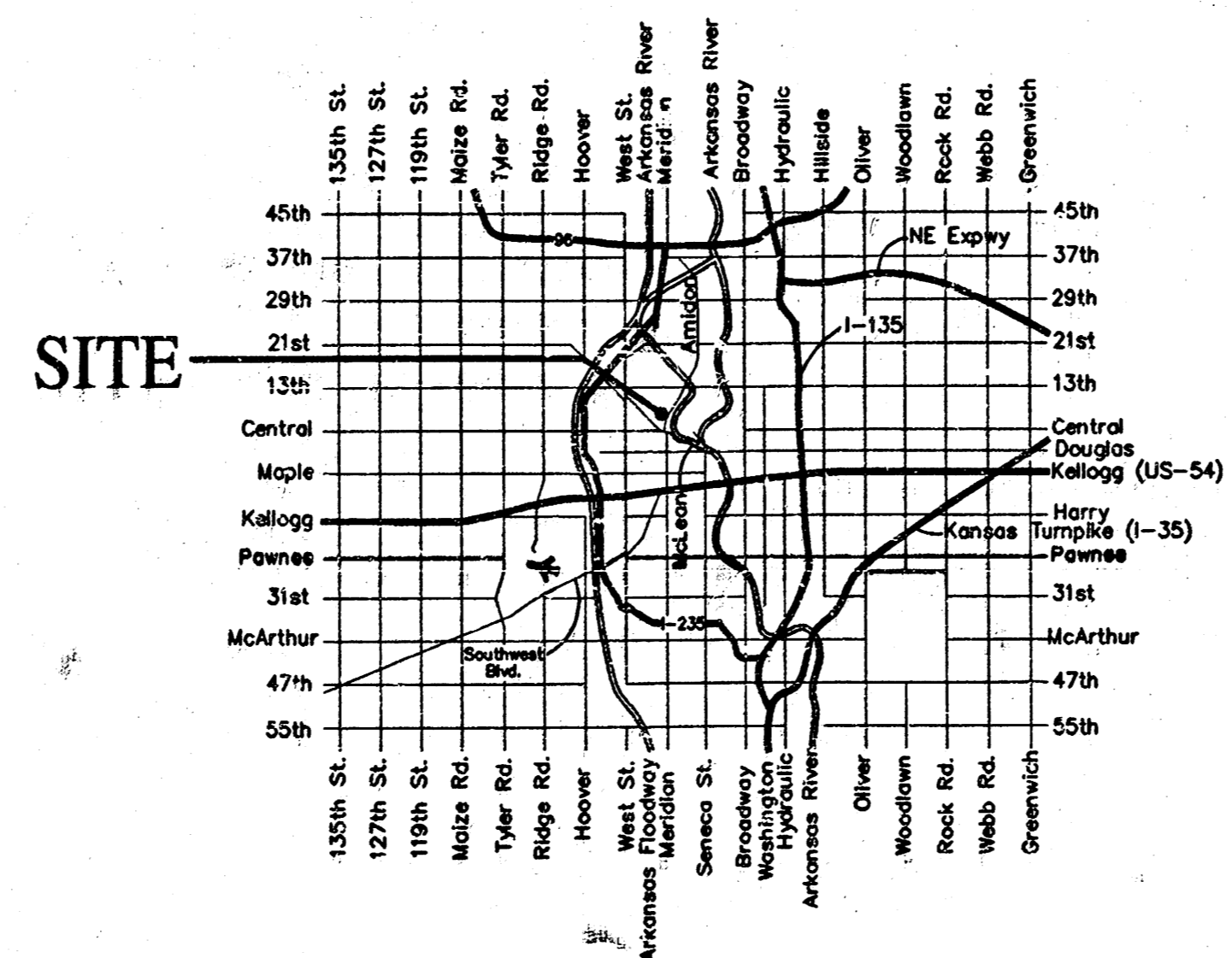
Kansas One-Call	687-2470
-----------------	----------

The Contractor must notify the following in case of an emergency:

Multimedia Cablevision	262-0661
K.G.E. Electric Service	383-8650
Kansas Gas Service	383-8600
Peoples Gas Company	942-8350
Southwestern Bell Telephone Company	1-571-2611
City of Wichita Water Dept.	268-4908
City of Wichita Traffic Engineering	269-4446
- Underground utility service lines and overhead utility pole lines are to be adjusted as necessary by others prior to construction unless the plans specifically call for their adjustment by the Contractor or unless the plans specifically identify a utility to be adjusted by its owner during construction. Existing utilities and their location, as shown on the plans, represent the best information obtainable for design. The Contractor will be required to work around existing utilities within the right-of-way which do not conflict with proposed construction.
- Trees and shrubs in public right-of-way which are in direct conflict with proposed new construction shall be removed by the Contractor with the Engineer's approval. Trees and shrubs which are not in direct conflict with proposed new construction shall be saved and protected from damage.
- The Contractor shall give all property owners and/or tenants of developed property abutting the construction of this project a minimum of ten (10) days advance notice prior to start of construction.
- The Contractor shall be responsible for preserving property irons. The Contractor will be required to re-establish any property irons which are damaged or destroyed by his construction operations. Such irons shall be re-established by a licensed land surveyor in accordance with state laws.
- All areas disturbed by construction operations shall be seeded with rye grass at a rate of 300 lbs/acre immediately following construction in that area. Prior to seeding, area shall be prepared per City specs.

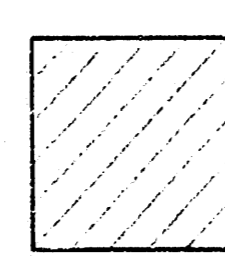
### SHEET INDEX

Title Sheet	1
Line 1	2
Standard Manhole Detail	3
Shallow Manhole Detail	4
Copy of Plat	5



Vicinity Map

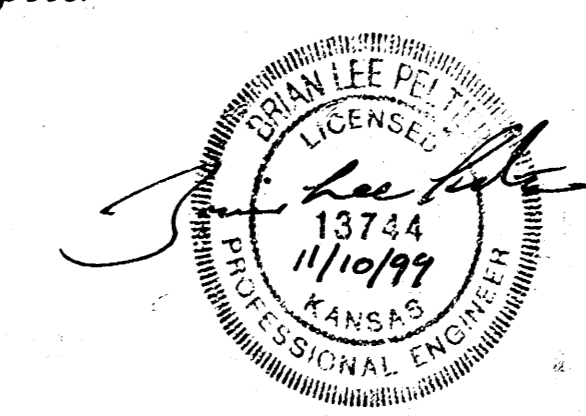
Benefit District



Booked  
P-111  
2-11-00  
RDL  
McCullough Excavation

APPROVED AS NOTED  
BY CITY ENGINEER OF WICHITA  
Sanitary Sewers 11/15/99 VRH

NOTE TO CONTRACTORS  
Inspection and testing for this project is to be provided by a Licensed Consulting Engineering Firm under contract with the Owner/Developer. Soil inspection is to be in accordance with the City of Wichita standard construction engineering practices and certified by a Licensed Professional Engineer. No work shall be performed in dedicated easements or public right-of-way by the Contractor without such inspection nor shall any work be commenced without written authorization by the City Engineer. All Construction and Materials shall comply with the City of Wichita Specifications and Standards (on file and available in the City Engineer's Office).



PROJECT INSPECTED BY BAUGHMAN CO. P.A.  
ASSAULT 1-11-2000

**BAUGHMAN COMPANY P.A.**  
ENGINEERING, SURVEYING, & PLANNING  
316-262-7271 • 315 ELLIS • WICHITA, KANSAS 67211

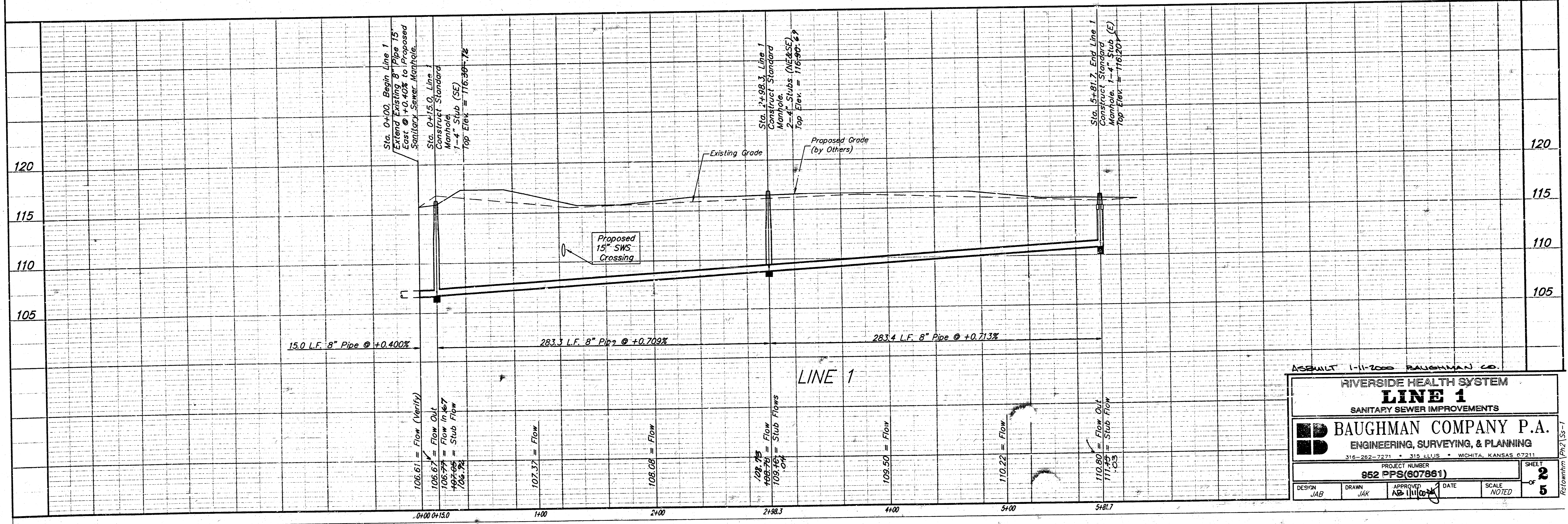
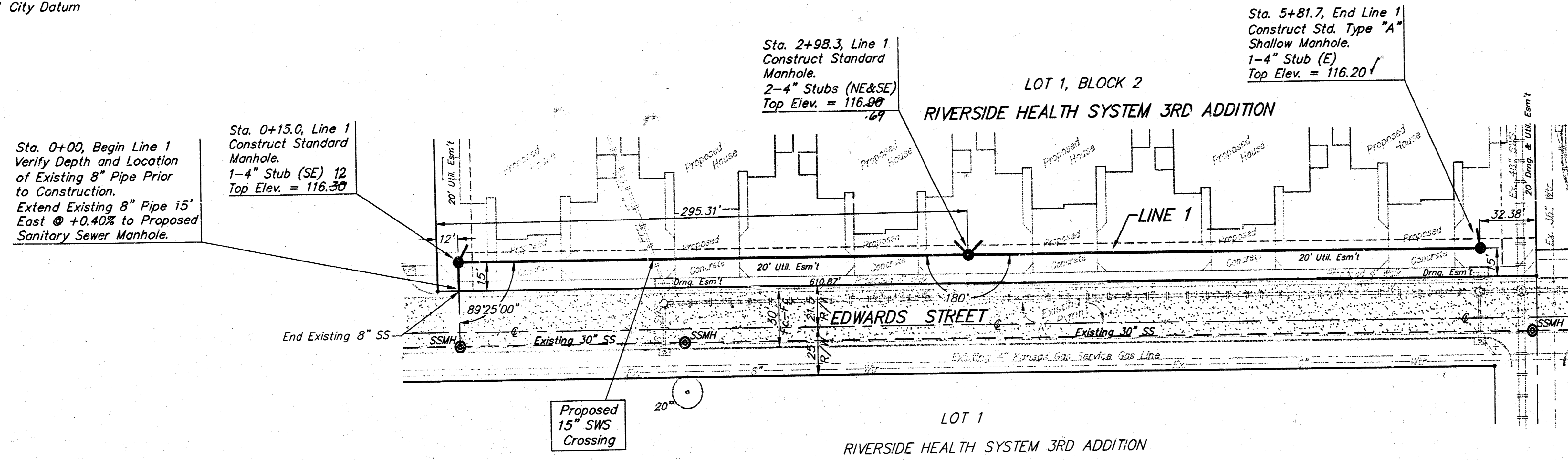
16-4-1-13

**Bench Marks**

1. "□" Located on top of curb on West side of Mclean Blvd. and South right-of-way line of vacated Murdock. Elevation = 115.91 City Datum
2. City standard disc 42.3' South & 35.8' West of centerlines of Central & Meridian Elevation = 116.31 City Datum



SCALE:  
 1" = 40' HORIZONTAL  
 1" = 5' VERTICAL  
 ● = IRON



ASSEMBLY 1-11-2000 BAUGHMAN CO.

RIVERSIDE HEALTH SYSTEM  
**LINE 1**  
 SANITARY SEWER IMPROVEMENTS

**BAUGHMAN COMPANY P.A.**  
 ENGINEERING, SURVEYING, & PLANNING  
 315-262-2271 • 315 ELLIS • WICHITA, KANSAS 67211

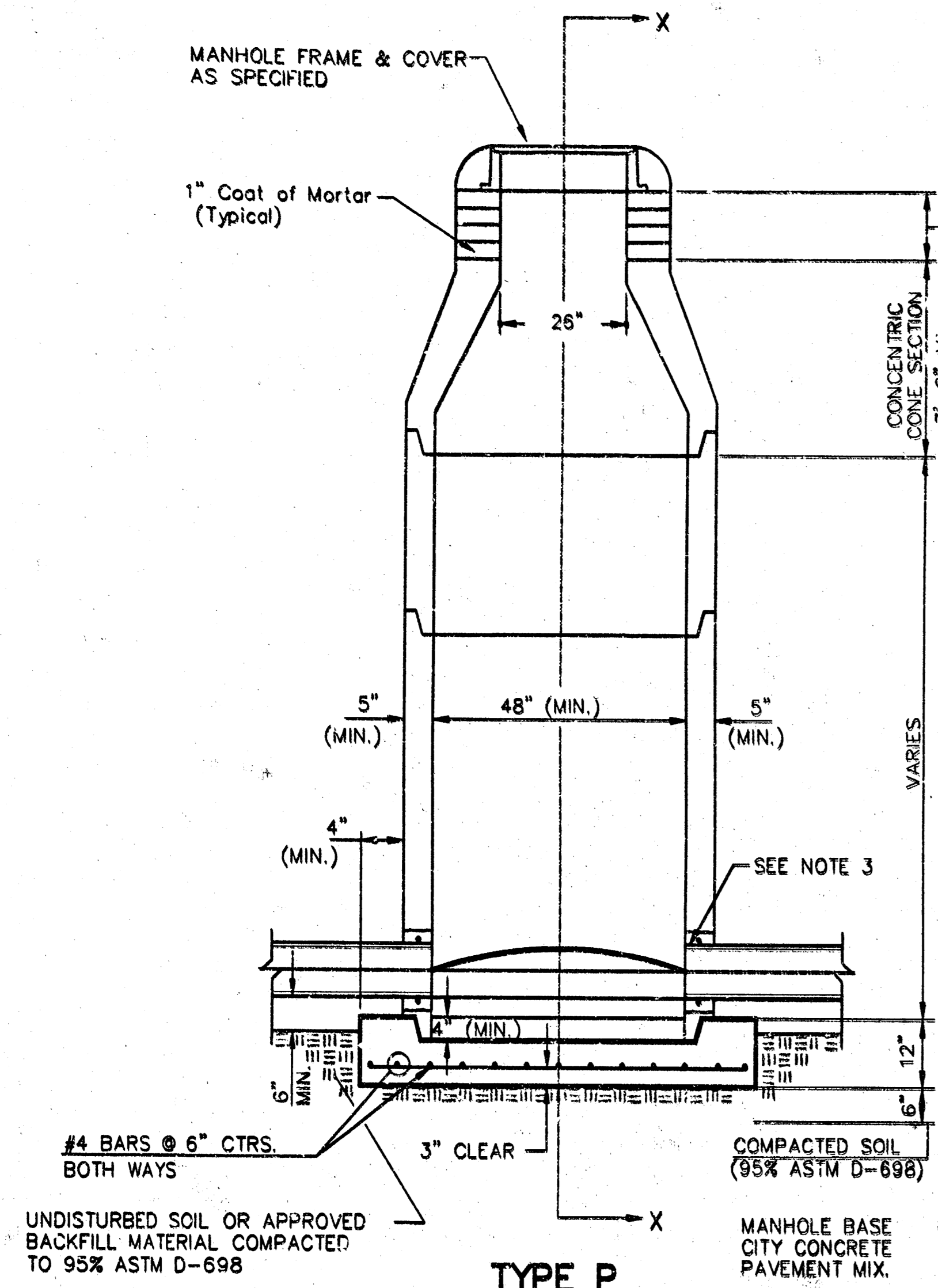
PROJECT NUMBER: 952 PPS(807961)

DESIGN JAB	DRAWN JAK	APPROVED AS (Signature)	DATE	SCALE NOTED
------------	-----------	-------------------------	------	-------------

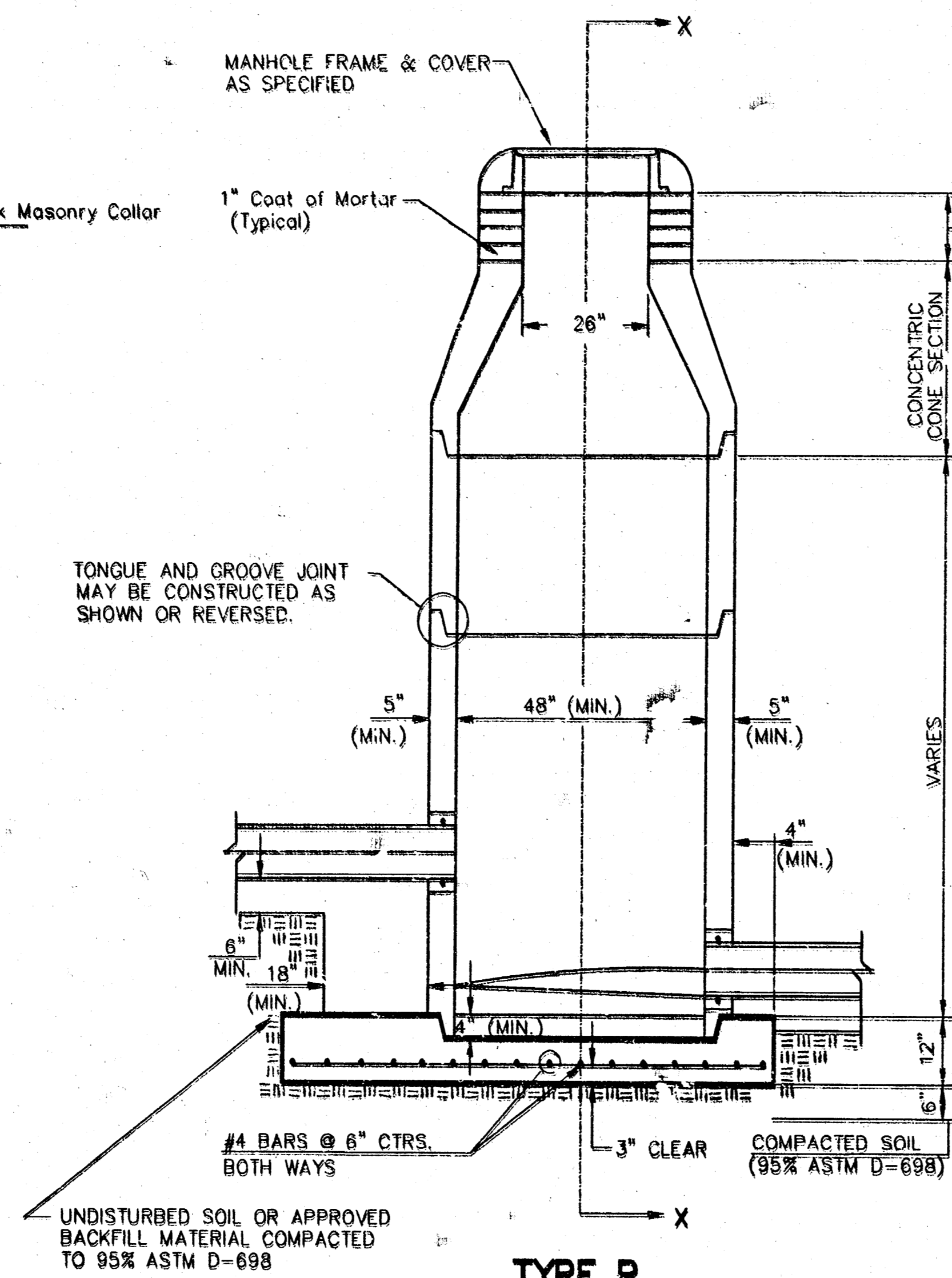
SHEET 2 OF 5

REVISION: (P)2 (S)1

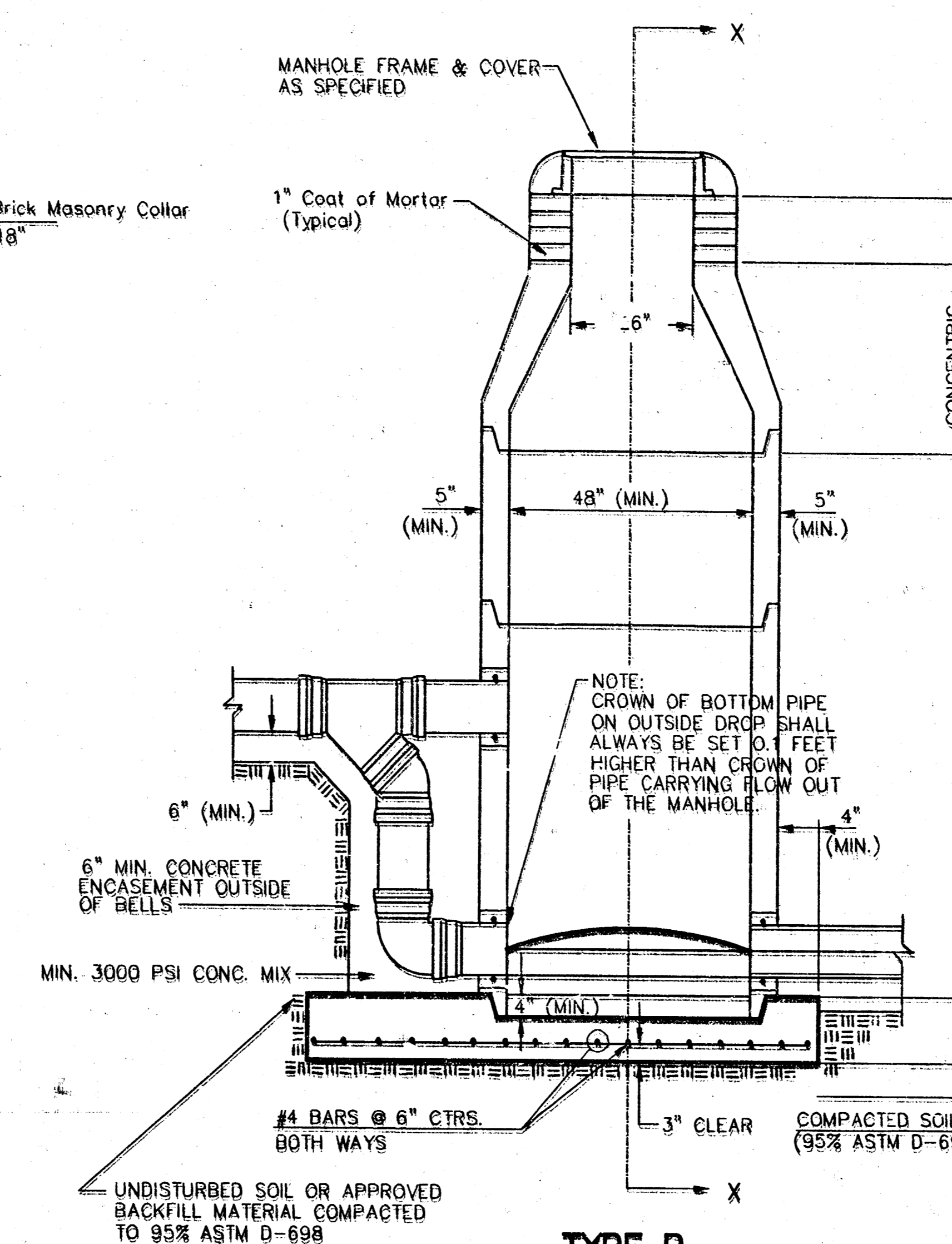
# SEWER APPURTENANCES DETAILS



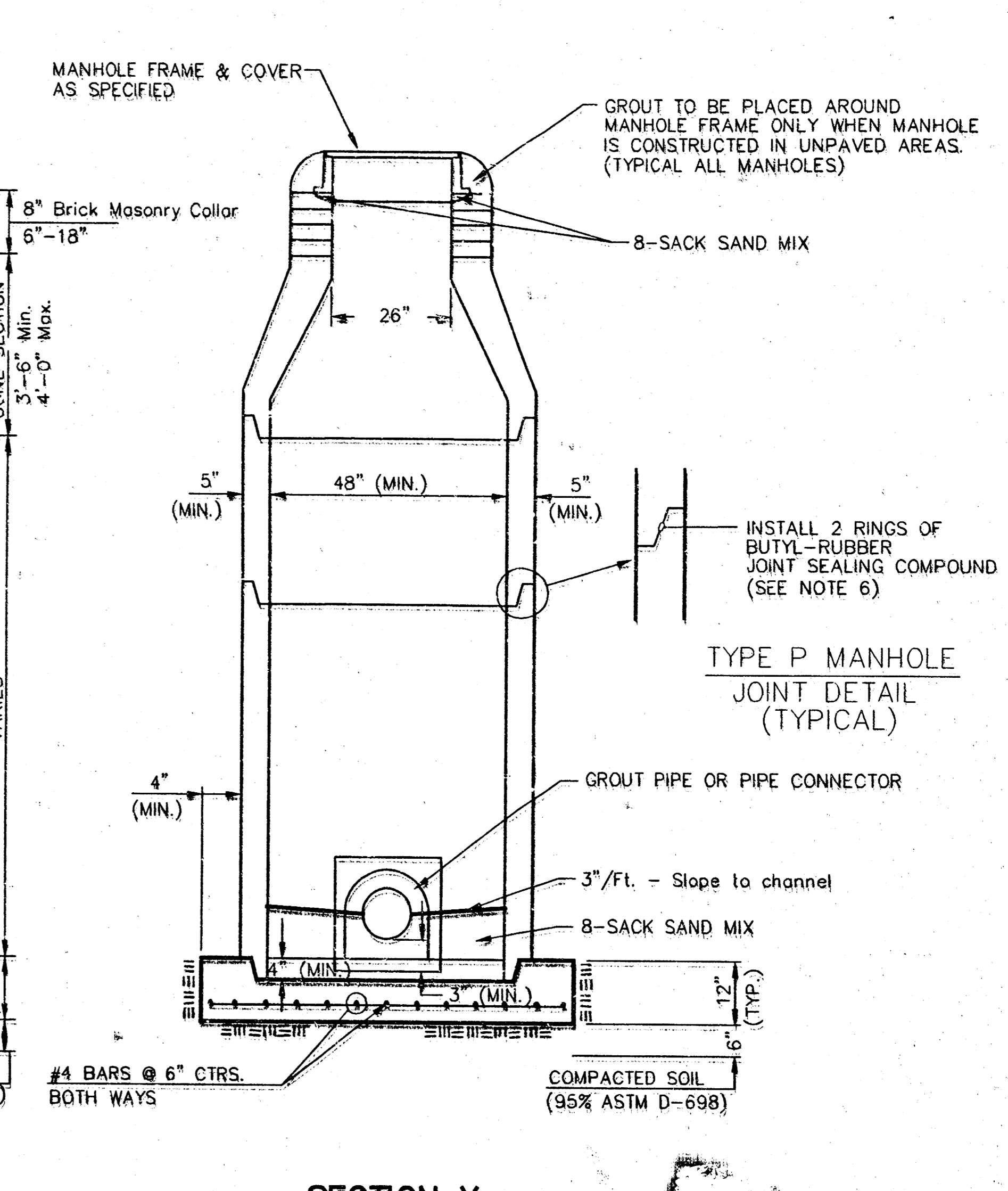
**TYPE P  
STANDARD MANHOLE**



**TYPE P  
INSIDE DROP MANHOLE**



**TYPE P  
OUTSIDE DROP MANHOLE**



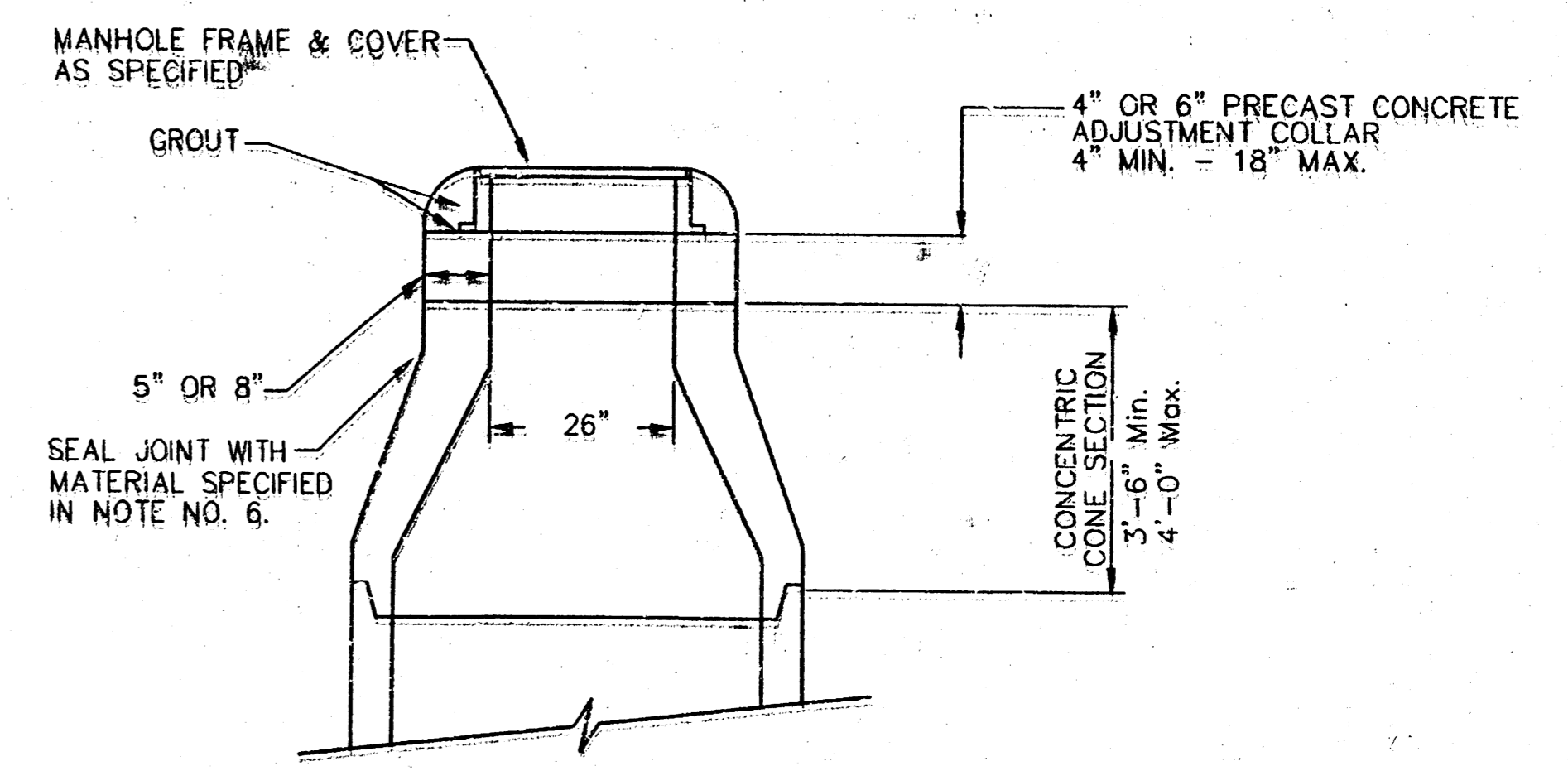
**SECTION X  
(TYPICAL)**

**GENERAL NOTES  
PRECAST MANHOLE NOTES**

- ALL PRECAST CONCRETE MANHOLE SECTIONS SHALL CONFORM TO THE LATEST REVISIONS OF A.S.T.M. C478 AS MODIFIED BY THE SPECIFICATIONS.
- NON-SHRINK GROUT SHALL BE NON-METALLIC TYPE.
- APPROVED FLEXIBLE WATERSTOP GASKETS SHALL BE INSTALLED TO JOIN THE SEWER TO THE MANHOLE WALL WHEN A.B.S. COMPOSITE PIPE OR P.V.C. PIPE IS USED. FOR OTHER TYPES OF PIPE THE SEWER SHALL BE GROUTED IN PLACE WITH NON-SHRINK GROUT. THE SEWER PIPE SHALL BE SUPPORTED WITH CONCRETE ENCASEMENT A MINIMUM OF 3 FEET FROM THE MANHOLE WALL AND TO THE FIRST JOINT FOR V.C.P. SUCH THAT THE JOINT REMAINS FLEXIBLE.
- ALL INSIDE SURFACES OF THE CONCRETE MANHOLE WHICH WOULD BE EXPOSED TO SEWER GAS SHALL BE COATED WITH 2 COATS THEMEC SERIES 66 HI-BUILD EPOXYLINE, DRY THICKNESS OF 8 MILS (MIN).
- EXTERIOR MANHOLE WALLS SHALL BE COATED WITH 1 COAT MOBILARMA 633 BITUMINOUS COATING.
- JOINT SEALING COMPOUND SHALL BE KENT SEAL NO. 2 OR APPROVED EQUAL.
- PRECAST MANHOLES SHALL BE SET AT LEAST 4 INCHES INTO THE MANHOLE BASE.
- TOP OF MANHOLE FLOOR SLAB SHALL BE AT LEAST 3 INCHES BELOW THE FLOW LINE OF THE OUTLET PIPE TO INSURE SUFFICIENT MINIMUM THICKNESS OF SHAPED INVERT.
- LIFTING HOLES SHALL BE FILLED WITH NON-SHRINK GROUT AND THE INTERIOR SURFACE COATED AS SPECIFIED.
- MORTAR USED IN MASONRY CONSTRUCTION SHALL CONTAIN 3 SACKS OF CEMENT PER CUBIC YARD. CONCRETE USED IN MANHOLE BASES SHALL CONFORM TO THE REQUIREMENTS OF CONCRETE FOR CONCRETE PAVING CONSTRUCTION AS SPECIFIED IN THE CITY STANDARD PAVING SPECIFICATIONS USING CITY CONCRETE PAVEMENT MIX WITHOUT AIR ENTRAINING ADMIXTURE. MORTAR SHALL BE PLACED AROUND THE MANHOLE RING AS SHOWN ON THE DRAWINGS WHEN MANHOLES ARE CONSTRUCTED IN UNPAVED AREAS. MANHOLES CONSTRUCTED WHERE PIPE SIZES ARE SMALLER THAN 24" SHALL HAVE AN INSIDE DIAMETER OF 4". MANHOLES CONSTRUCTED WHERE PIPE SIZES ARE 24" OR LARGER SHALL HAVE AN INSIDE DIAMETER OF 5". COMPLETED MANHOLE SHALL BE WITHOUT LEAKS AND WATER TIGHT.

- REINFORCING STEEL SHALL BE INSTALLED IN THE MANHOLE BASES AND SHALL CONSIST OF NO. 4 BARS PLACED ON 6" CENTERS IN BOTH DIRECTIONS. THE MANHOLE BASE REINFORCEMENT SHALL BE PLACED AT LEAST 3" ABOVE THE BOTTOM OF THE MANHOLE BASE. ALL COSTS FOR FURNISHING AND INSTALLING REINFORCING STEEL SHALL BE INCLUDED IN THE UNIT PRICE BID FOR THE MANHOLE.
- OPENINGS SHALL BE CUT INTO THE MANHOLE WALL WHEN OUTSIDE DROPS ARE CONSTRUCTED ON EXISTING MANHOLES. SUCH OPENINGS CUT INTO EXISTING MANHOLES SHALL BE AS SMALL AS PRACTICAL TO FACILITATE INSTALLING AND GROUTING THE NEW PIPE IN PLACE. WATERSTOP GASKETS SHALL BE USED WITH P.V.C. AND A.B.S. COMPOSITE PIPE. THE NEW PIPE SHALL BE GROUTED INTO THE OPENING USING AN APPROVED NON-SHRINK GROUT FOR THE FULL MANHOLE WALL THICKNESS. THE EXTERIOR OF THE COMPLETED CONNECTION SHALL BE SEALED WITH AN APPROVED BITUMINOUS COATING SUCH THAT THE CONNECTION WILL BE WATER TIGHT. FLOOR OF MANHOLE SHALL BE MODIFIED TO FORM NEW FLOW CHANNEL FOR THE NEW CONNECTION AS INDICATED BY THE DRAWING. THIS WORK, INCLUDING MODIFICATION OF MANHOLE FLOOR, SHALL BE PAID FOR AT THE UNIT PRICE BID FOR OUTSIDE DROP STACK CONSTRUCTED ON EXISTING MANHOLE.
- THE FLOORS OF ALL MANHOLES SHALL BE SHAPED WITH FLOW CHANNELS SUCH THAT THE MANHOLES WILL BE SELF CLEANING AND FREE OF AREAS WHERE SOLIDS COULD BE DEPOSITED AS SEWAGE FLOW THROUGH THE MANHOLE FROM ALL INLET PIPES TO THE OUTLET PIPE. FLOW CHANNELS SHALL BE FORMED TO MATCH THE BOTTOM HALVES OF THE INFLOWING PIPES AND THE OUTFLOWING PIPE AS SHOWN BY THE DRAWINGS EXCEPT FOR INSIDE DROP MANHOLES. FLOW CHANNELS FOR INSIDE DROP MANHOLES SHALL BE CONSTRUCTED AS INDICATED BY THE DRAWING. MANHOLE FLOORS SHALL HAVE SLOPES OF 3 INCHES PER FOOT IN THE AREAS OUTSIDE OF THE FLOW CHANNELS SLOPED TOWARD THE FLOW CHANNELS. PIPES LAID THROUGH MANHOLES SHALL HAVE THE TOP HALF REMOVED TO NEAT LINES FOR THE FULL INSIDE DIAMETER OF THE MANHOLE. MANHOLE FLOORS SHALL THEN BE SHAPED AROUND THE BOTTOM HALF OF THE PIPE WHICH FORMS THE FLOW CHANNEL.
- PIPES INSTALLED WITHIN THE EXCAVATION MADE FOR THE MANHOLE SHALL BE CRADLED WITH CONCRETE TO THE LIMITS OF THE MANHOLE EXCAVATION. WHEN CLAY PIPE IS USED, THE CRADLE SHALL EXTEND TO THE FIRST JOINT OUTSIDE THE MANHOLE. THE CRADLE SHALL BE TERMINATED AT THE CLAY PIPE JOINT IN A MANNER WHICH WILL MAINTAIN THE FLEXIBILITY OF THE JOINT. COST OF CRADLE WITHIN MANHOLE EXCAVATION OR TO CLAY PIPE JOINTS ADJACENT TO MANHOLE SHALL BE INCLUDED IN THE UNIT PRICE BID FOR THE MANHOLE.

- MANHOLE COVER CASTINGS AND MANHOLE FRAME CASTINGS SHALL CONFORM TO THE REQUIREMENTS AS INDICATED IN THE STANDARD SPECIFICATIONS AND AS SHOWN IN THE STANDARD DETAIL DRAWING.
- THE VERTICAL DROP IN INSIDE DROP MANHOLES SHALL NOT EXCEED 2' FOR INFLOWING PIPES SIZED 12" OR SMALLER AND 2' FOR INFLOWING PIPES LARGER THAN 12". THE CROWNS OF INFLOWING PIPES SHALL NEVER BE SET LOWER THAN THE CROWN OF THE OUTFLOWING PIPE.
- STANDARD MANHOLES AND STANDARD INSIDE DROP MANHOLES SHALL BE BID AS STANDARD MANHOLES FOR THE TYPE AND DIAMETER INDICATED. OUTSIDE DROP MANHOLES SHALL BE BID AS STANDARD OUTSIDE DROP MANHOLES FOR THE TYPE AND DIAMETER INDICATED. ALL MANHOLE DIAMETERS WILL BE 4' UNLESS INDICATED OTHERWISE.
- A BRICK MASONRY COLLAR SHALL BE INSTALLED BETWEEN THE CAST IRON FRAME AND THE CONCENTRIC CONE. THE COLLAR WILL HAVE 8" WALLS AND A VERTICAL HEIGHT OF 6" MINIMUM AND 18" MAXIMUM. A 1" COAT OF MORTAR WILL BE PLASTERED ON THE OUTSIDE OF THE COLLAR. THE USE OF PRE-CAST CONCRETE SPACERS FOR MANHOLE TOP ADJUSTMENT IS ALSO ALLOWED.



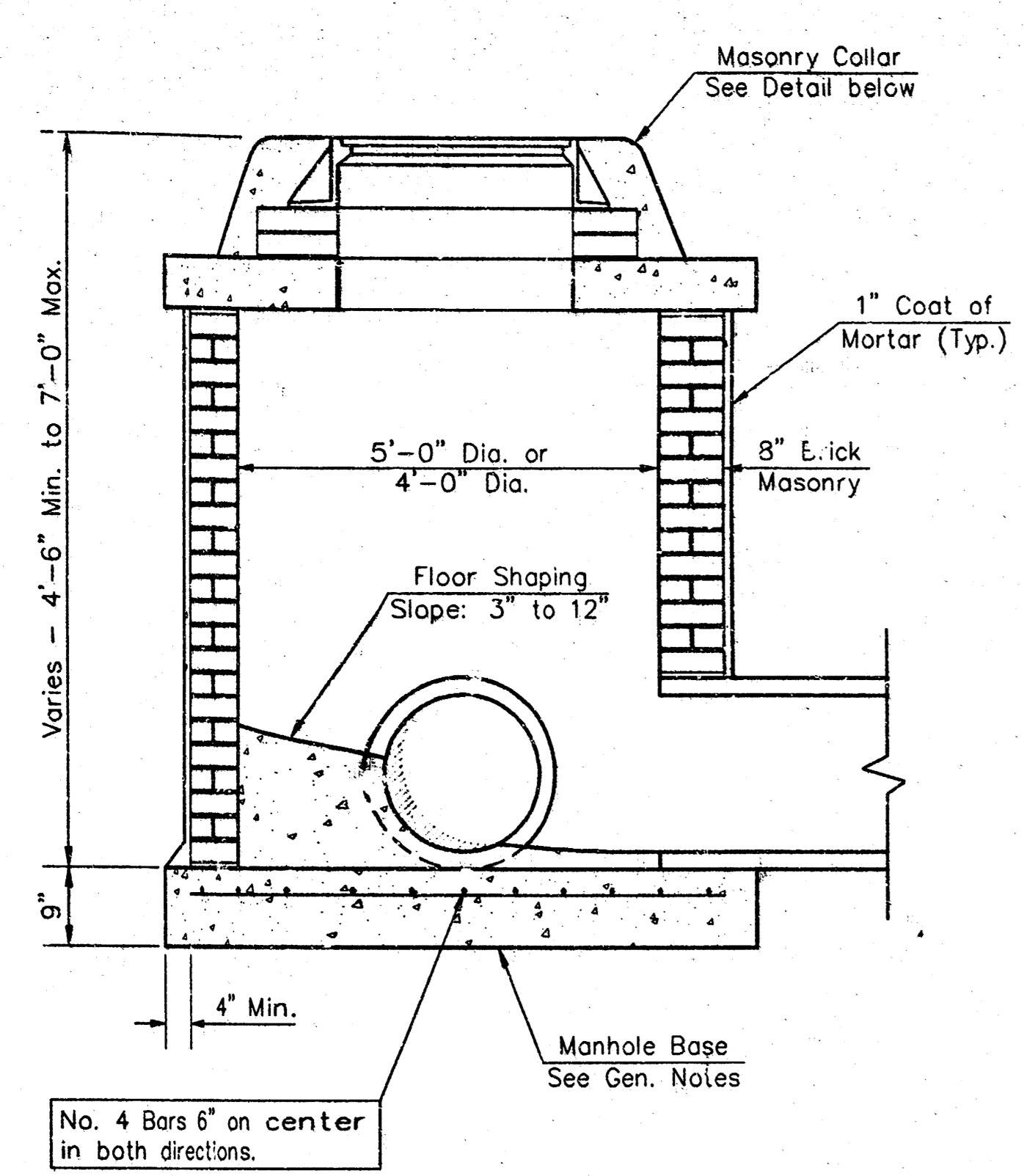
**ALTERNATE CONSTRUCTION  
IN UNPAVED AREAS**

CITY OF WICHITA  
**STD. MANHOLE DETAILS**  
SEWER APPURTENANCES

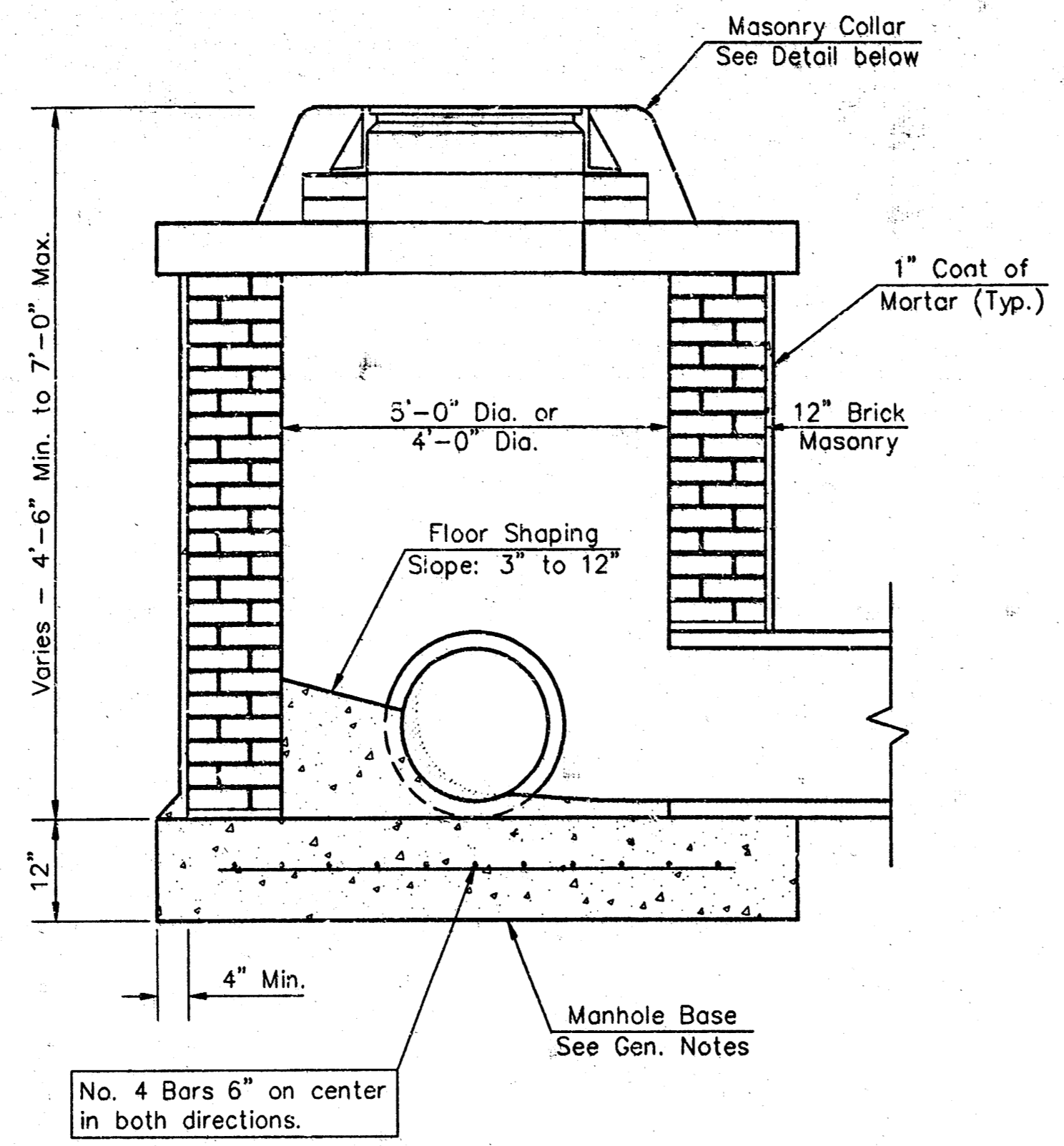
**BAUGHMAN COMPANY P.A.**  
ENGINEERING, SURVEYING, & PLANNING  
316-262-7271 • 315 ELLIS • WICHITA, KANSAS 67211

PROJECT NUMBER  
**953 PPS(07881)**

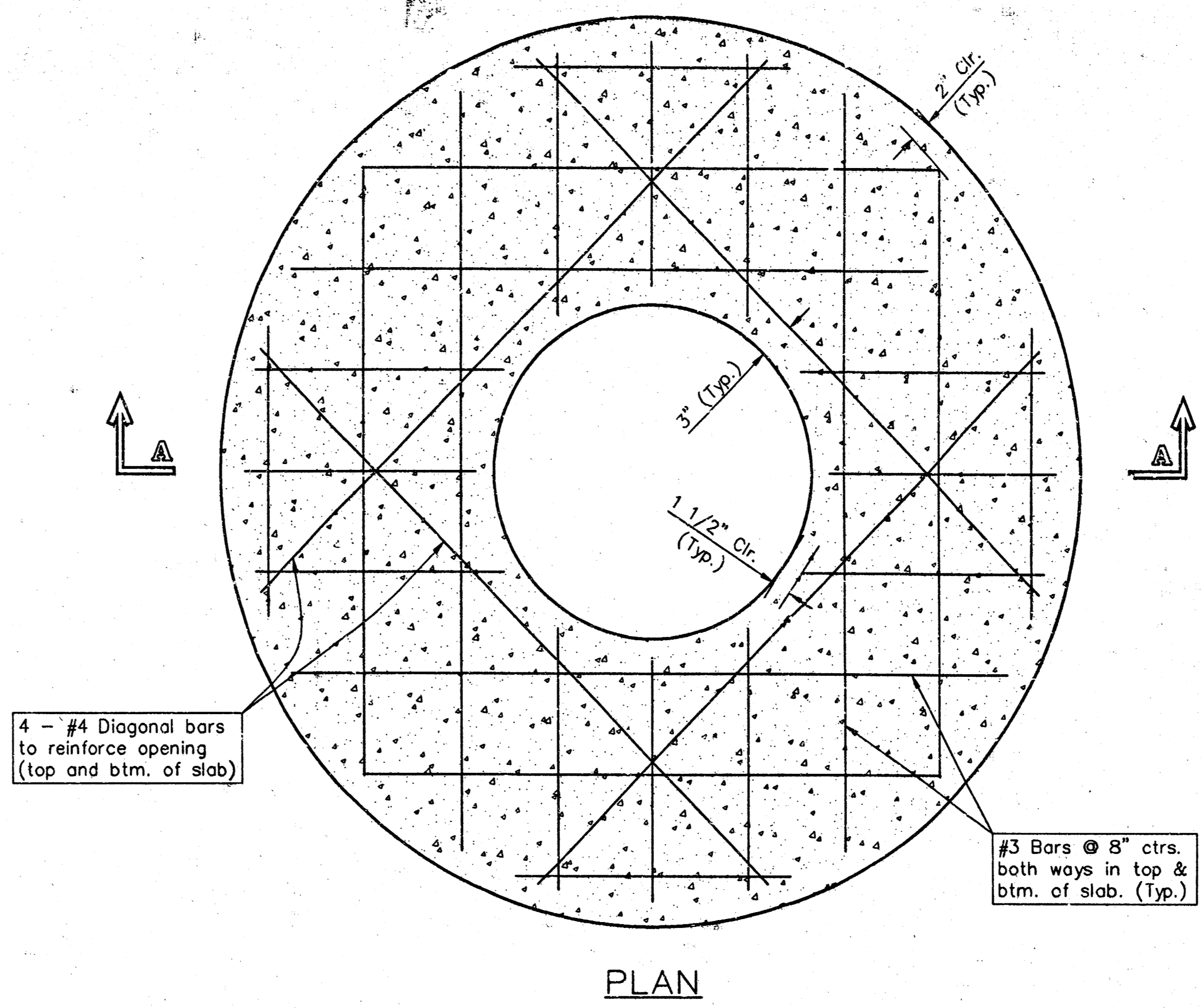
DESIGN STAFF	DRAWN STAFF	APPROVED	DATE 11/99	SCALE NONE	SHEET 3 OF 5
--------------	-------------	----------	------------	------------	--------------



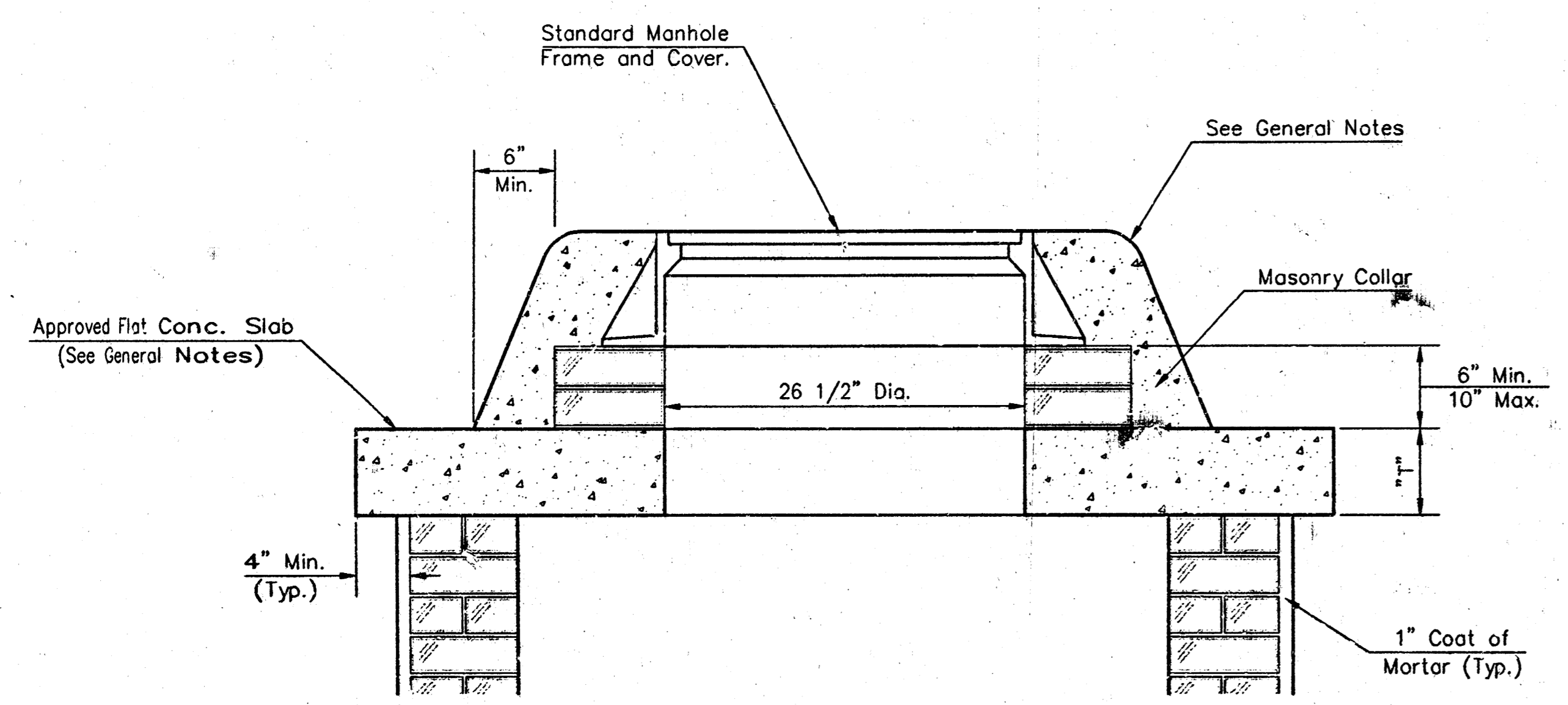
SHALLOW TYPE "A" MANHOLE



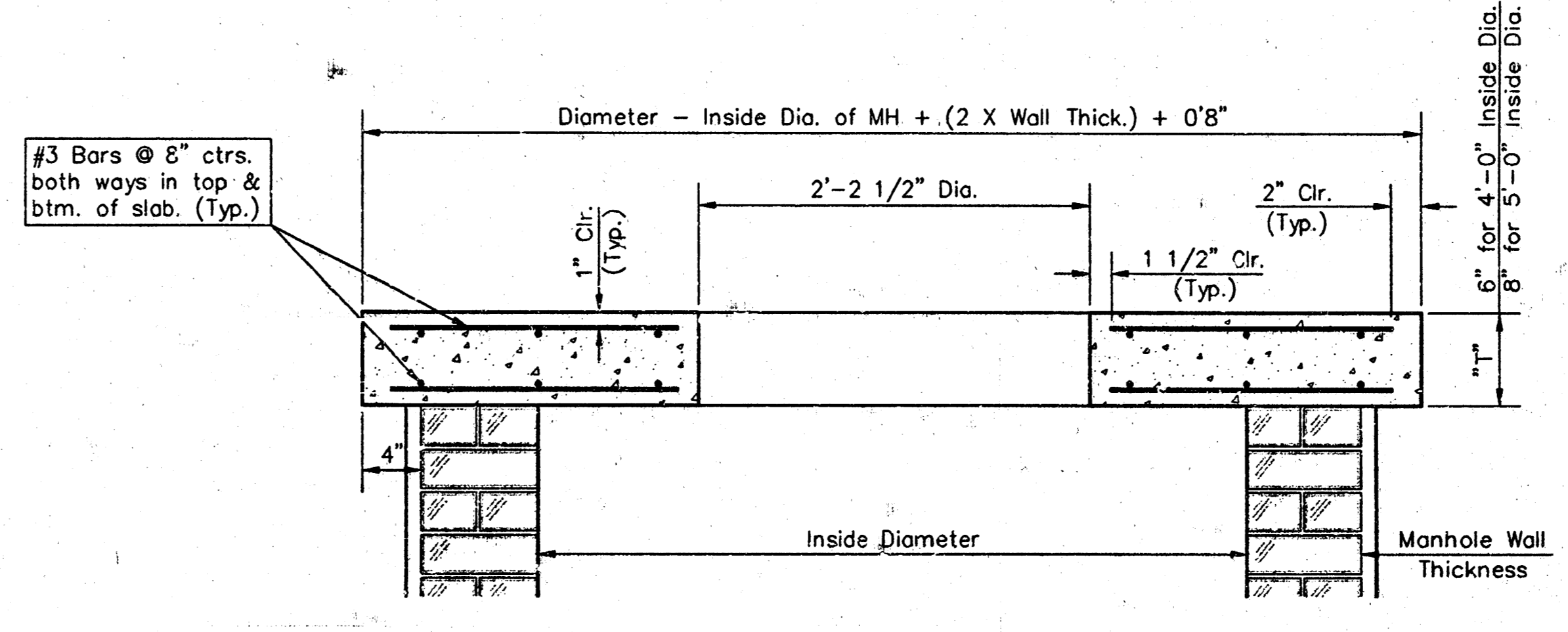
SHALLOW TYPE "B" MANHOLE



PLAN

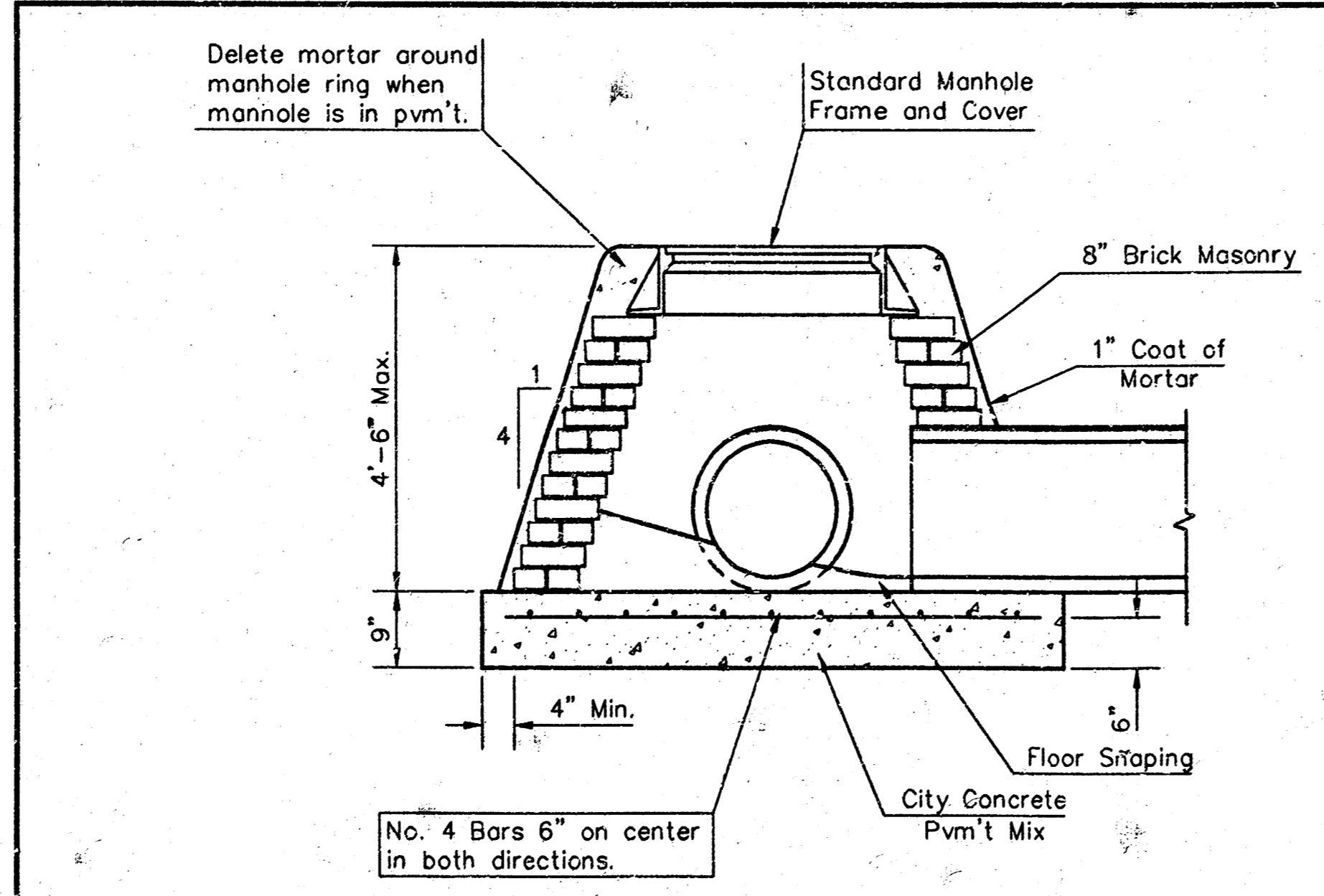


MASONRY COLLAR DETAIL

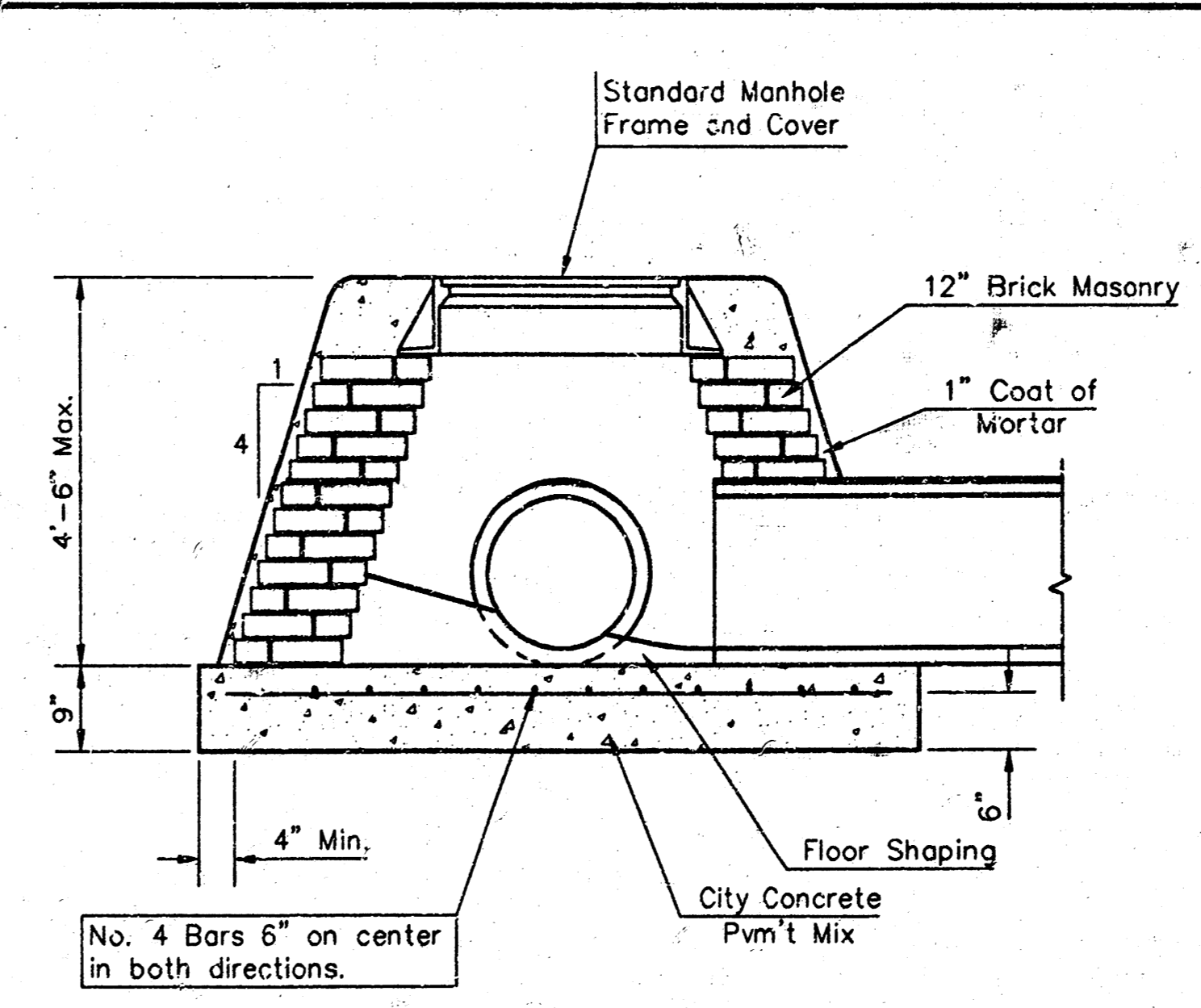


SECTION A-A

FLAT CONCRETE SLAB DETAILS



SPECIAL SHALLOW TYPE "A" MANHOLE



SPECIAL SHALLOW TYPE "B" MANHOLE

- GENERAL NOTES**
- Mortar used in masonry construction shall contain 8 sacks of cement per cubic yard. Concrete used in manhole bases shall conform to the requirements of concrete for concrete pavement construction as specified in the city standard paving specifications using city concrete cement mix without air entraining admixture. Mortar shall be placed around the manhole ring as shown on the drawings when manholes are constructed in un-paved areas. Type "A" shallow manholes can be used on sewers when the manhole is not located within public street pavement. Manholes constructed where pipe sizes are smaller than 24" shall have an inside diameter of 4". Manholes constructed where pipe sizes are 24" or larger shall have an inside diameter of 5". Completed manhole shall be without leaks and water tight.
  - Reinforcing steel shall be installed in the manhole bases and shall consist of no. 4 bars placed on 6" centers in both directions. The manhole base reinforcement shall be placed 6" above the bottom of the manhole base. All costs for furnishing and installing reinforcing steel shall be included in the unit price bid for the manhole.
  - The floors of all manholes shall be shaped with flow channels such that the manholes will be self cleaning and free of areas where solids could be deposited as sewage flows through the manhole from all inlet pipes to the outlet pipe. Flow channels shall be formed to match the bottom halves of the inflowing pipes and the outflowing pipe as shown by the drawings. Manhole floors shall have slopes of 3 inches per foot in the areas outside of the flow channels sloped toward the flow channels. Pipes laid through manholes shall have the top half removed to neat lines for the full inside diameter of the manhole. Manhole floors shall then be shaped around the bottom half of the pipe which forms the flow channel.
  - Pipes installed within the excavation made for the manhole shall be cradled with concrete to the limits of the manhole excavation. When clay pipe is used, the cradle shall extend to the first joint outside the manhole. The cradle shall be terminated at the clay pipe joint in a manner which will maintain the flexibility of the joint. Cost of cradle within manhole excavation or to clay pipe joints adjacent to manhole shall be included in the unit price bid for the manhole.
  - Manhole cover castings and manhole frame castings shall conform to the requirements as indicated in the standard specifications and as shown in the standard detail drawings.
  - The crowns of inflowing pipes shall never be set lower than the crown of the outflowing pipe.
  - Standard shallow manholes type "A" and "B" shall be paid for at the unit price bid per each for the type and diameter indicated. Standard special shallow manholes type "A" and "B" shall be paid for at the unit price bid per each for the type indicated. All standard shallow manhole diameters will be 4' unless indicated otherwise.
  - All brick used in manhole construction shall meet Grade SW of ASTM C652 or C62-87.

CITY OF WICHITA, KANSAS  
**Std. Manhole Detail**  
 TYPE "A" AND TYPE "B"

BAUGHMAN COMPANY P.A.  
 ENGINEERING, SURVEYING, & PLANNING  
 316-262-7271 • 315 ELLIS • WICHITA, KANSAS 67211

PROJECT NUMBER: 962 PPS(607881)  
 SHEET: 4 OF 5

DESIGN: C.O.W.    DRAWN: Staff    APPROVED:    DATE: 11/99    SCALE: NONE

# RIVERSIDE HEALTH SYSTEM 3RD ADDITION

## WICHITA, SEDGWICK COUNTY, KANSAS

State of Kansas) SS We, Baughman Company, P.A., Surveyors in Sedgwick County) do hereby certify that we have surveyed and plotted "RIVERSIDE HEALTH SYSTEM 3RD ADDITION", Wichita, Sedgwick County, Kansas, and that the accompanying plat is a true and correct exhibit of the property surveyed, described as and being a replat of Lots 1, 2, 3, 4, 5, 6, 7, 8, 9, 10, 11, and 12, Sim Park Gardens, Wichita, Sedgwick County, Kansas together with Block 2, Osteopathic Addition, Wichita, Sedgwick County, Kansas and together with the N1/2 of vacated Murdock Street lying south of and adjacent to said Block 2, and together with a tract of land in the SE1/4 of Sec. 13, Twp. 27-S, R-1-W lying between the north line of said Block 2 and the south line of McLean Park Addition, Wichita, Kansas, and west of the west line of McLean Blvd. and east of the line of Edwards Ave., and together with the east 13.50 feet of that part of Edwards Ave. lying south of the south line of said McLean Park Addition, as extended west, and lying north of the center of Murdock as dedicated in said Osteopathic Addition, as extended west.

All being situated in the SE1/4 of Sec. 13, Twp. 27-S, R-1-W, of the 6th P.M., Sedgwick County, Kansas.  
Existing public easements and dedications being vacated by virtue of K.S.A. 12-512(b).

Baughman Co., P.A.

Michael G. Conroy, Surveyor  
Michael G. Conroy

Know all men by these presents that we, the undersigned, have caused the land in the surveyors certificate to be platted into a Lots and Blocks to be known as "RIVERSIDE HEALTH SYSTEM 3RD ADDITION", Wichita, Sedgwick County, Kansas. The utility easements are hereby granted as indicated for the construction and maintenance of all public utilities. The drainage and utility easements are hereby granted as indicated for drainage purposes and for the construction and maintenance of all public utilities. The drainage easements are hereby granted as indicated for drainage purposes. All abutters rights of access to or from McLean Boulevard over and across the east line of lot 1, Block 2, are hereby granted to the City of Wichita, Kansas.

Riverside Health System, Inc.

Robert Dixon, President & C.E.O.  
Robert Dixon

Edward M. Harrison, Edward M. Harrison

Evelyn J. Johanning, Paul Johanning

State of Kansas) SS The foregoing instrument acknowledged before me, this 23 day of March, 1999, by Robert Dixon, President and C.E.O. of Riverside Health System, Inc., on behalf of the corporation.

My App't. Exp. 9-13-2001  
REBECCA J. TOPHAM, Notary Public  
REBECCA J. TOPHAM, Notary Public - State of Kansas  
My App't. Expires 9-13-2001

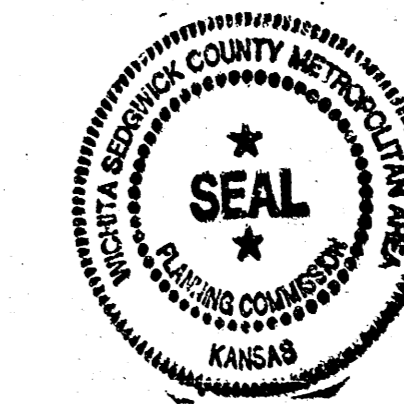
State of Oklahoma) SS The foregoing instrument acknowledged before me, this 11th day of March, 1999, by Edward M. Harrison, a single person.

My App't. Exp. 3-10-2001  
PATRICIA ELDER, Notary Public

State of Oklahoma) SS The foregoing instrument acknowledged before me, this 11th day of March, 1999, by Evelyn A. Johanning and Paul Johanning, wife and husband.

My App't. Exp. 3-10-2001  
PATRICIA ELDER, Notary Public

This plat of "RIVERSIDE HEALTH SYSTEM 3RD ADDITION", Wichita, Sedgwick County, Kansas has been submitted to and approved by the Wichita-Sedgwick County Metropolitan Area Planning Commission, Wichita, Kansas.  
Dated this 14 day of January, 1999  
Wichita-Sedgwick County Metropolitan Area Planning Commission



William M. Johnson, Chairman

Marvin S. Krout, Secretary

This plat approved and all dedications shown hereon accepted by the City Council of the City of Wichita, Kansas, this 11th day of May, 1999.



Bob Knight, Mayor

Pat Burnett, City Clerk

Reviewed in accordance with K.S.A. 5B-2005 on this 29th day of September, 1999.

Tricia L. Robello, LS #1246  
Deputy County Surveyor  
Sedgwick County, Kansas

Entered on transfer record this 29th day of September, 1999.



James Alfred, County Clerk

State of Kansas) SS This is to certify that this plat has been filed for record in the office of the Register of Deeds, this 31st day of September, 1999, at 8:40 o'clock A.M. and is duly recorded.



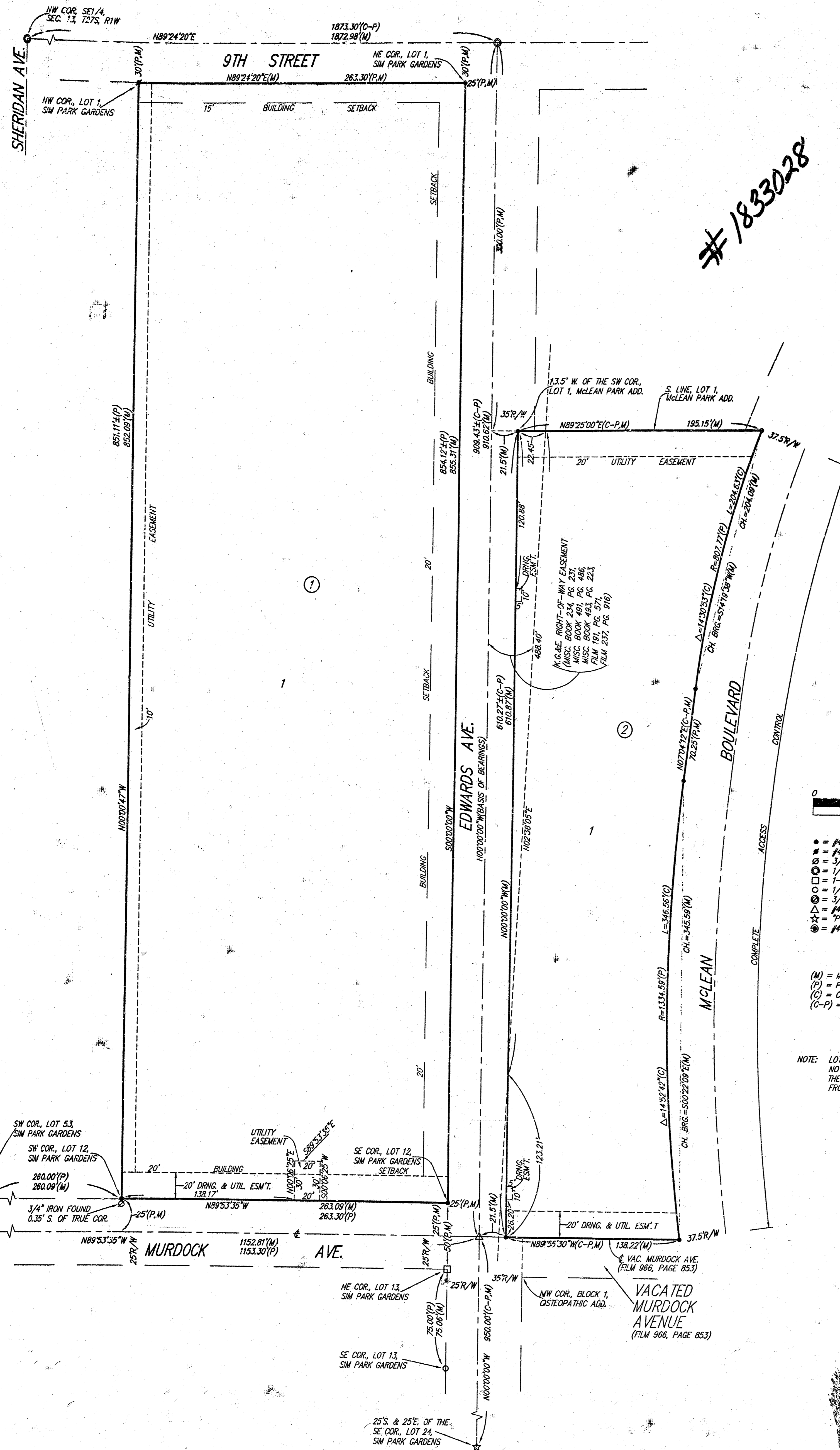
Bill Meek, Register of Deeds

Linda Kizzire, Deputy

5/5

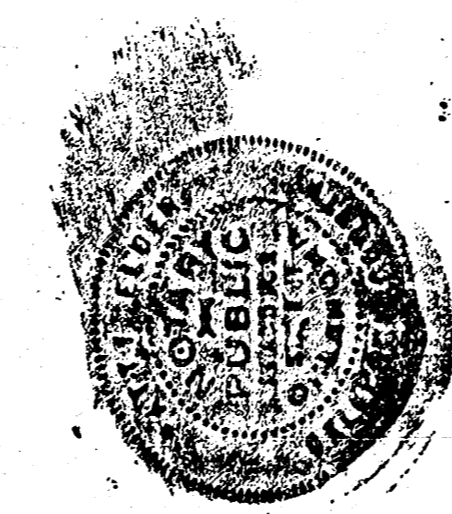
BAUGHMAN COMPANY P.A.  
ENGINEERING, SURVEYING, & PLANNING  
316-262-7271 • 315 ELLIS • WICHITA, KANSAS 67201

18 00 01 31



- = #4 REBAR W/ "BAUGHMAN" CAP (SET)
  - = #4 REBAR W/ "BAUGHMAN" CAP (FOUND)
  - = 3/4" IRON (FOUND)
  - ◇ = 1/2" IRON IN TRIMBLE (FOUND)
  - = 1/2" IRON (FOUND)
  - = 1/2" IRON IN TRIMBLE (FOUND)
  - = #4 REBAR (FOUND)
  - = #4 REBAR (FOUND)
  - = #4 REBAR IN 1/2" IRON (FOUND)
- (M) = MEASURED  
(P) = PLATTED  
(C) = CALCULATED  
(C-P) = CALCULATED PER PLATTED INFO

NOTE: LOT 1, BLOCK 2 SHALL HAVE NO BUILDING SETBACK ALONG THE EDWARDS STREET FRONTAGE.



E:\SHARE\PRINSE.A.DWG Mod Feb 24 12:08:23 1999