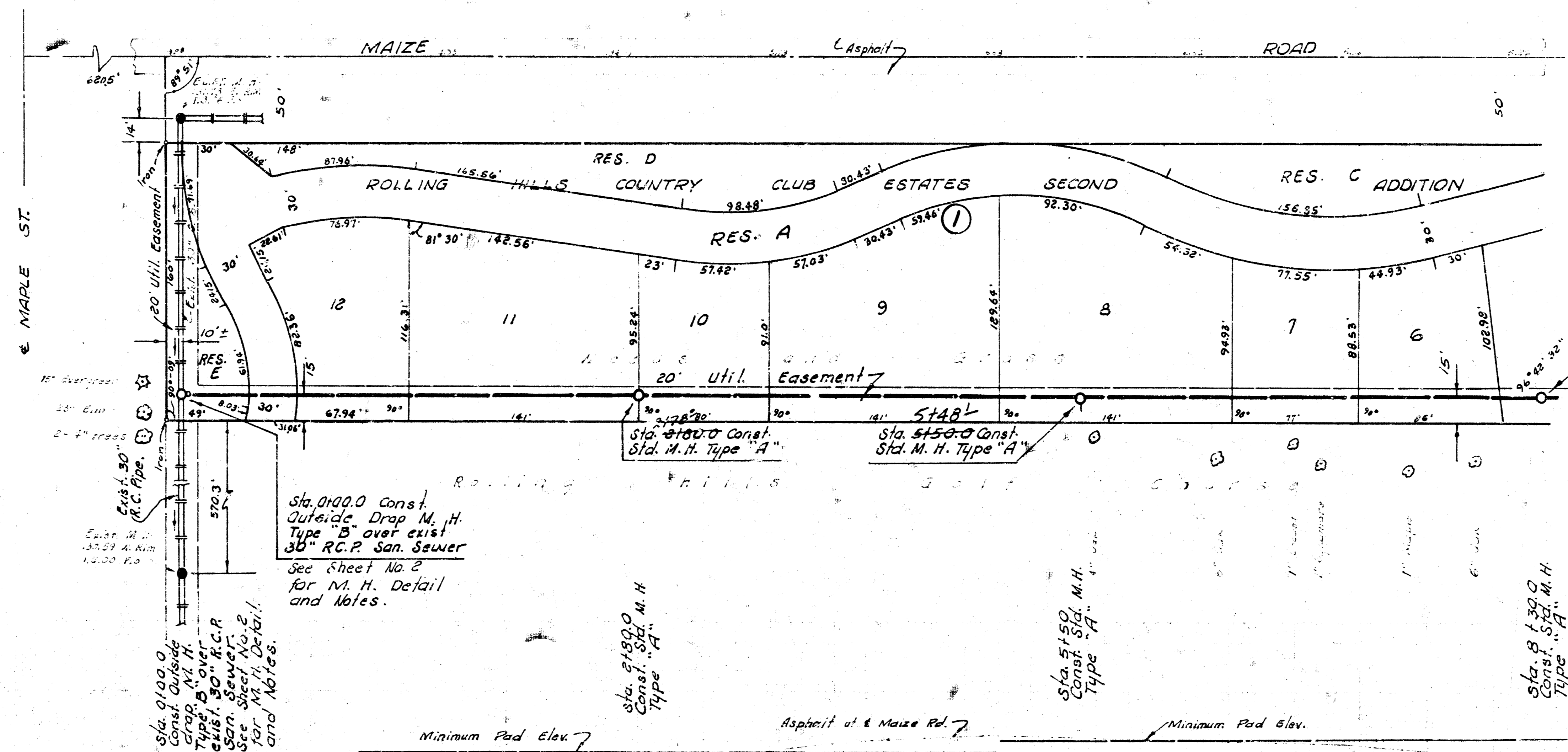
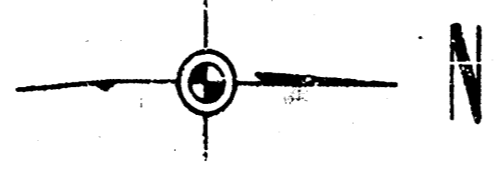


B. M. 133.19 City Std @ Maize & Maple
 43.5' South & 327' E. of both.

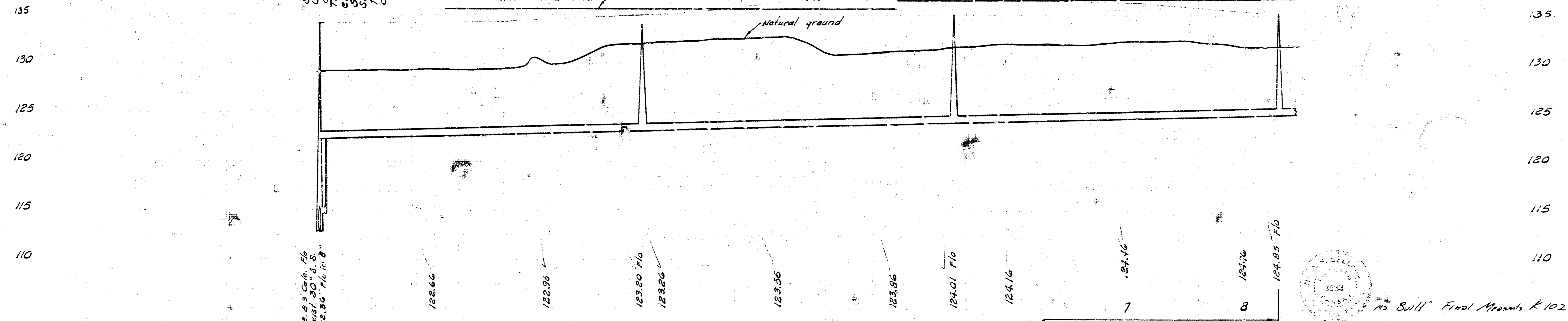
T. B. M. 134.575 Brass cap to E-Hub
 guard 1st R. C. Bridge, north
 (400'± N of) of Maple.

Plan Scale 1" = 10'
 Profile Scale 1" = 10' Horiz.
 1" = 5' Vert.



NOTE:
 Contractor to contact
 developer and establish
 top of manhole elevations.

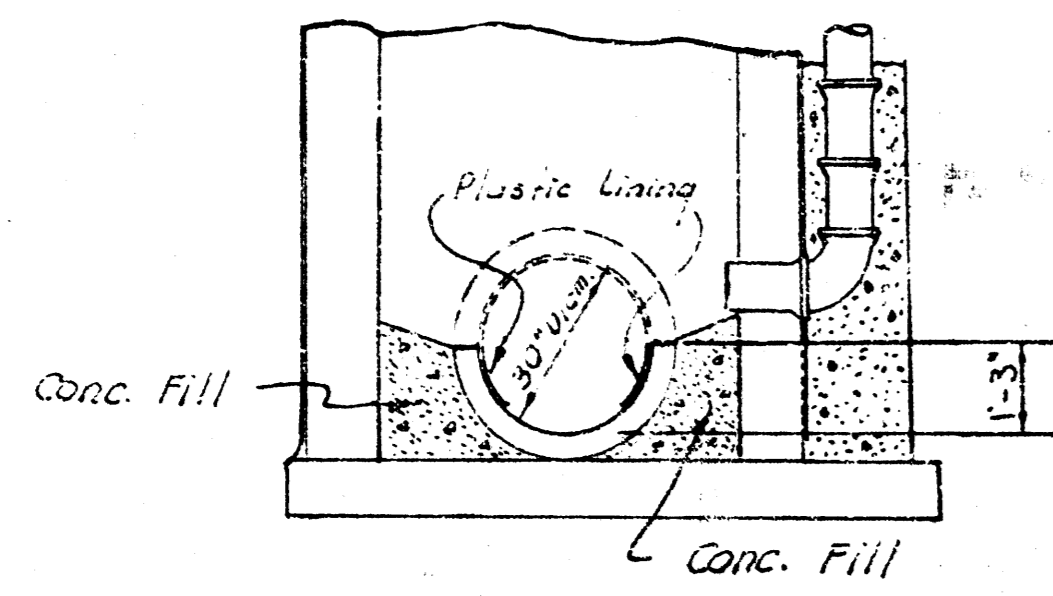
NOTE TO CONTRACTOR
 This project will be constructed under
 the supervision of the CITY ENGINEER
 and conforming to the SPECIFICATIONS
 of the CITY OF WICHITA. The CON-
 TRACTOR shall reimburse the City of
 Wichita for all cost of Engineering, Plans
 & Inspection.



**SANITARY SEWER
 FOR ROLLING HILLS COUNTRY
 CLUB ESTATES SECOND ADDITION
 CITY OF WICHITA, KANSAS
 R. W. LINN — CITY ENGINEER
 DEC. 1972, PRIVATE PROJECT NO. ARK8502253**



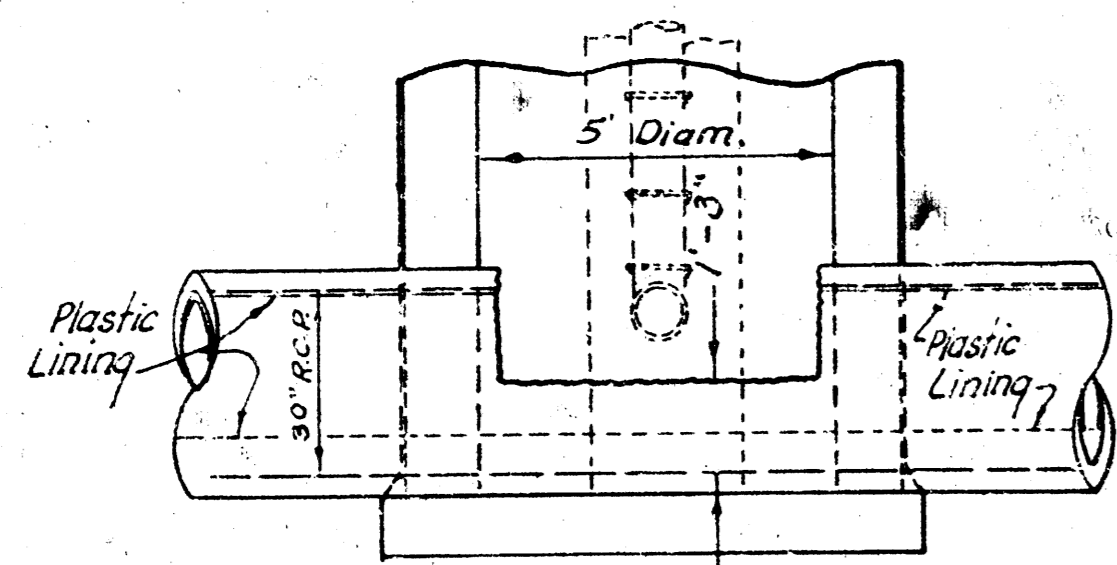
As Built Final Plans & 102



SECTION

Sta. 0100.0
Std. M.H. Type "B" 5' diam.

NOTE:
All exposed Conc. pipe surface to be protected with Plastic lining as approved by the Field Engineer.
Method of removing top 1/2 of 30" R.C.P. is to be approved by the Field Engineer.



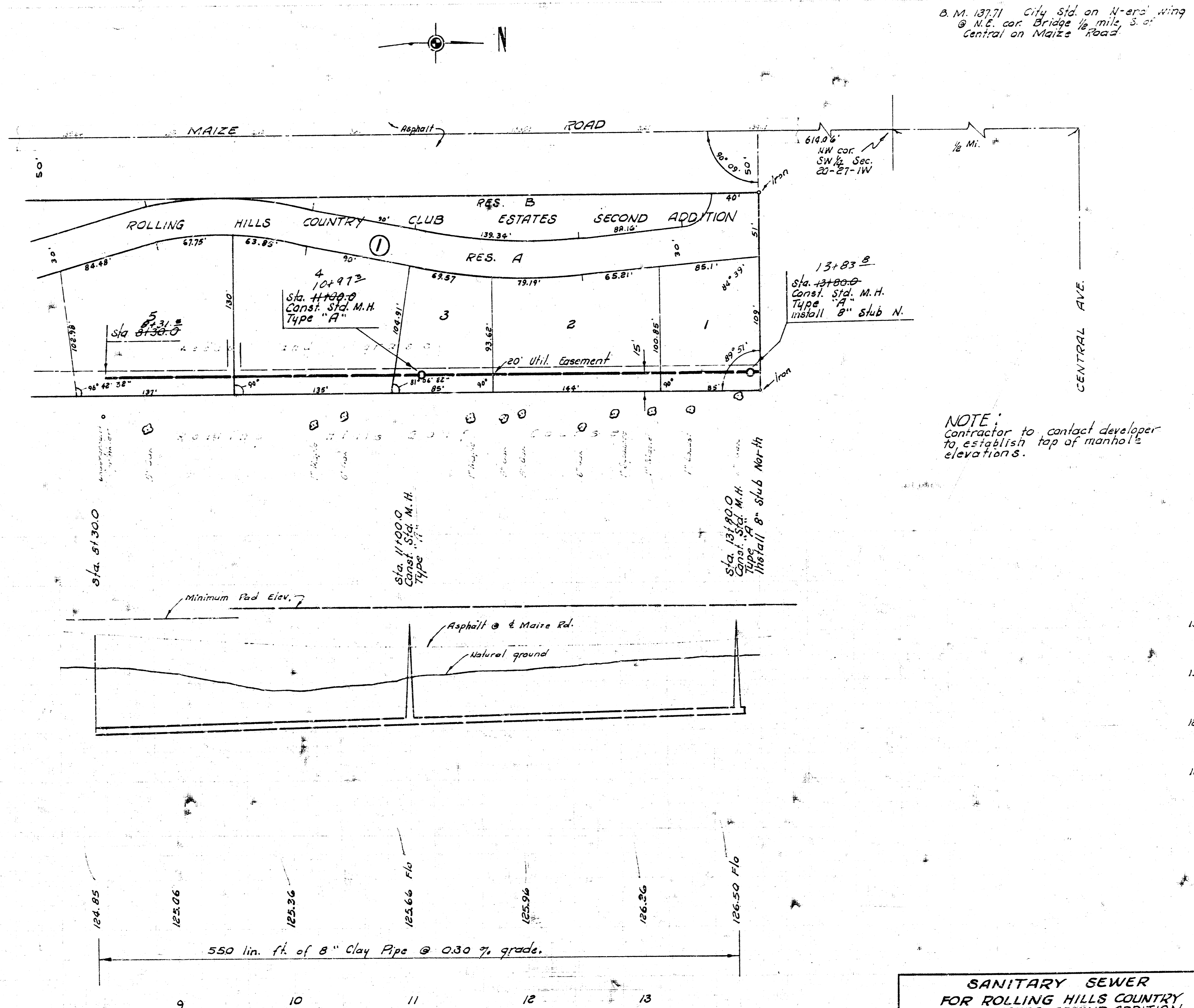
SECTION
Sta. 0100.0

NOTE:
Outside of brick manhole of Sta. 0100.0 shall be given two coats of Bitumastic Super Service Black as manufactured by Koppers Chemicals and Coatings, or an approved equal. Application shall be according to manufacturer's recommendations.

135 Who-Dond Bentonite as manufactured by Archer Daniels Midland Co., or an approved equal shall be mixed with the backfill material lying below water table elevation at the manhole location of Sta. 0100.0. Approximately 40 Pounds of Bentonite is to be uniformly mixed with the backfill material.

125

120



B.M. 137.71 City Std. on N-ero wing @ N.E. cor. Bridge 1/2 mile S. of Central on Maize Road.

SANITARY SEWER
FOR ROLLING HILLS COUNTRY CLUB ESTATES SECOND ADDITION
PRIVATE PROJECT NO. AAKB502053