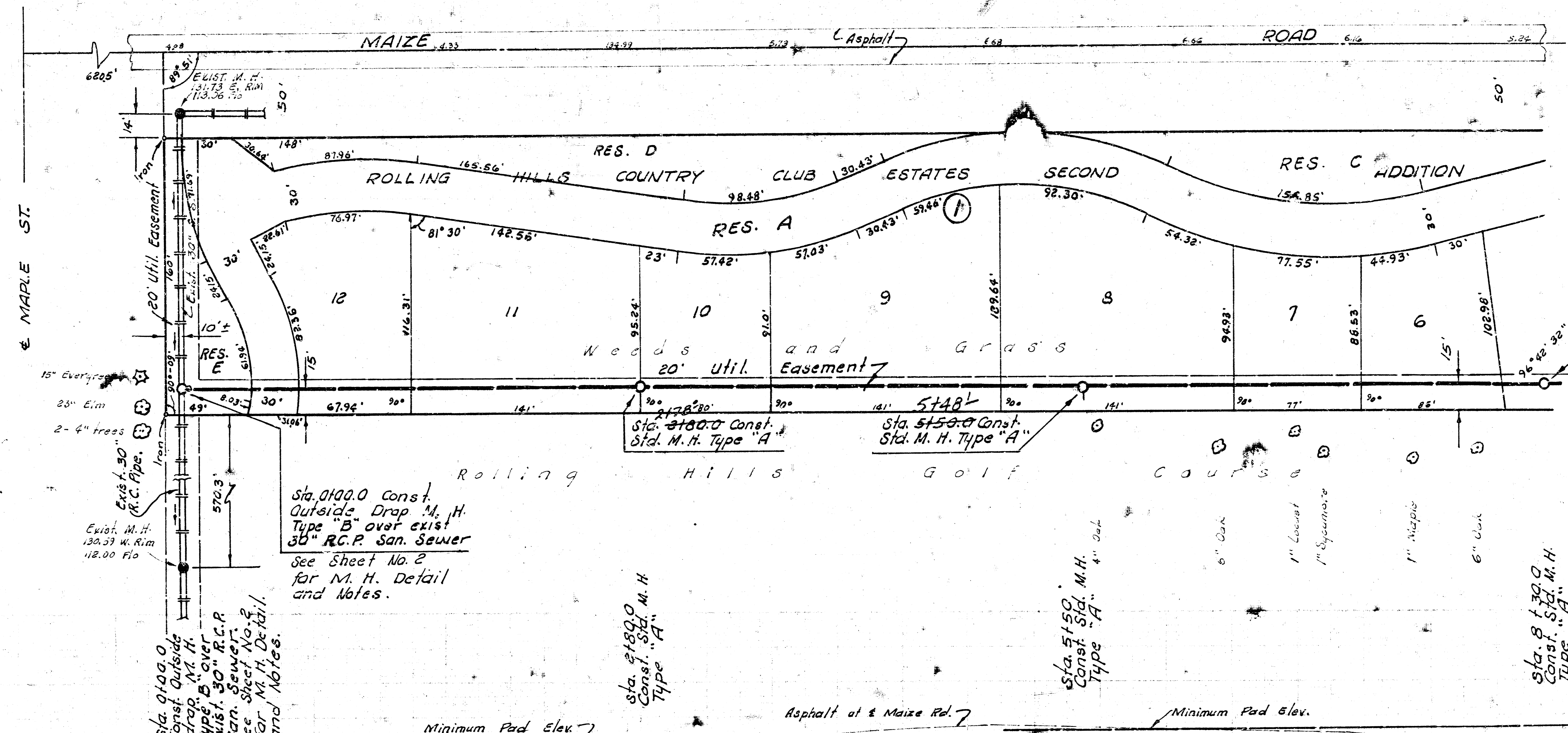
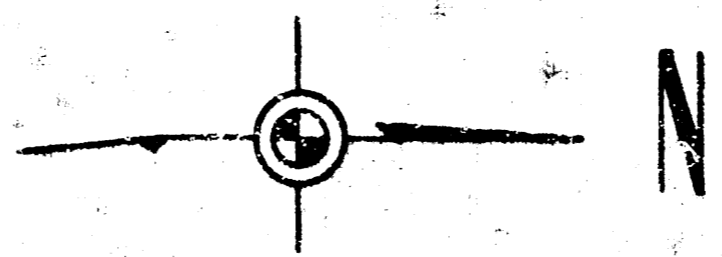


3. A. 133.19 City Sid @ Maize & Maple
 43.5' south & 587' E. of & both.

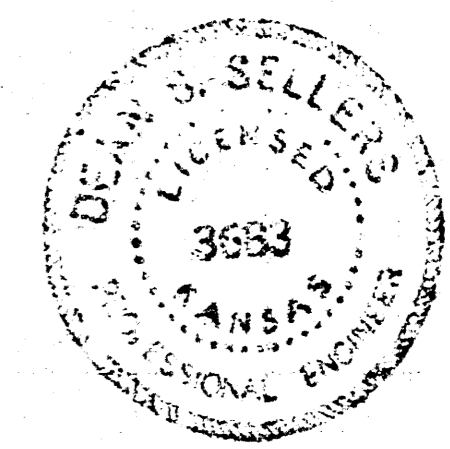
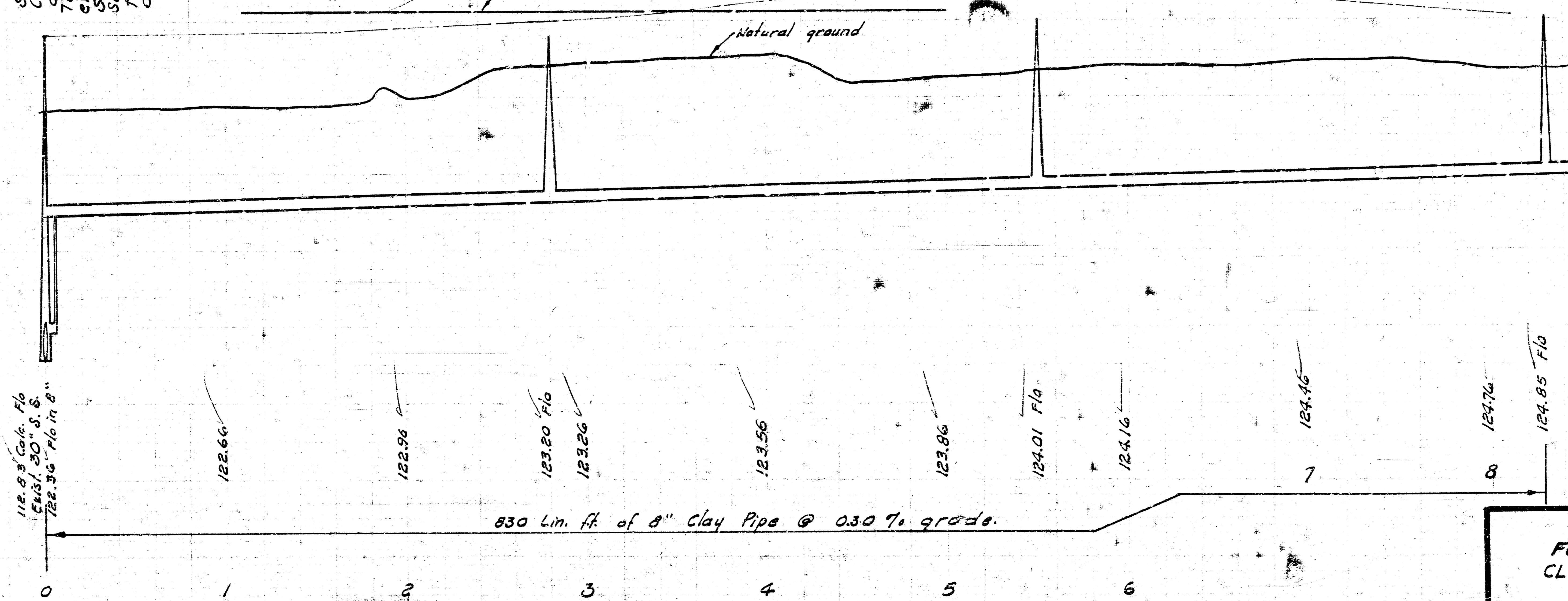
T. B. M. 134.575 Brass cap to E-Hub
 guard 1st R. C. Bridge north
 (400' N of) of Maple.

Plan Scale 1" = 40'
 Profile Scale 1" = 10'



NOTE:
 Contractor to contact
 Developer and establish
 top of manhole elevations.

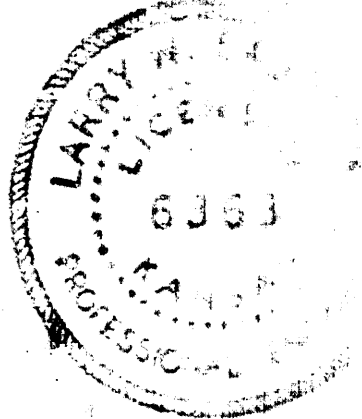
NOTE TO CONTRACTOR
 This project will be constructed under
 the supervision of the CITY ENGINEER
 and conforming to the SPECIFICATIONS
 of the CITY OF WICHITA. The CON-
 TRACTOR will reimburse the City of
 Wichita for all cost of Engineering, Plans
 and Inspection.



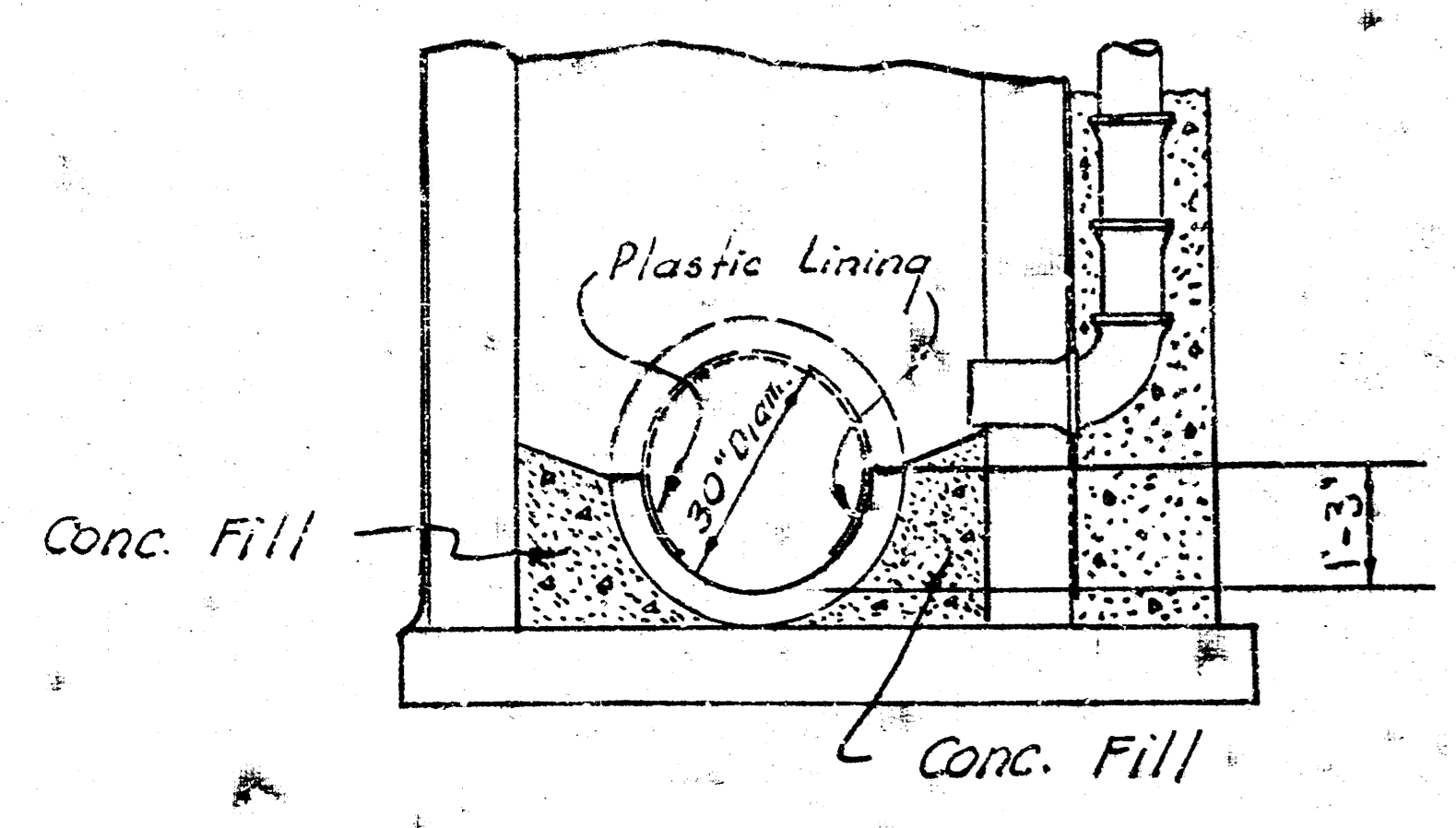
"As Built" Final Measmts. K-1

**SANITARY SEWER
 FOR ROLLING HILLS COUNTRY
 CLUB ESTATES SECOND ADDITION
 CITY OF WICHITA, KANSAS**
 R. W. LINN — CITY ENGINEER
 DEC. 1972, PRIVATE PROJECT NO. AAKB50205

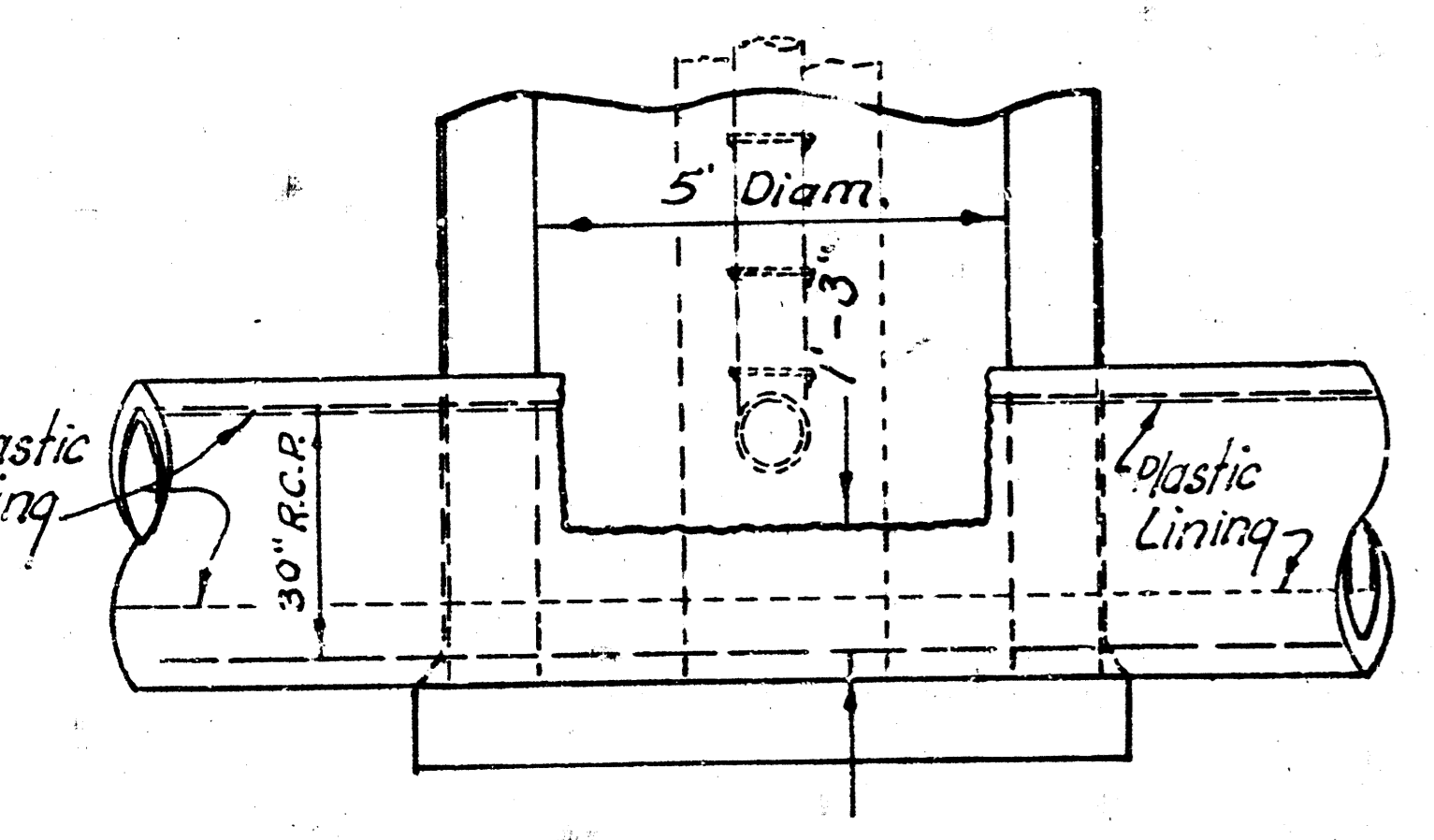
*C40732-67 and (36)
 2-20-73
 City of Wichita



B.M. 13771 City Sid. on N. side
 @ N.E. cor. Bridge 1/2 mile S
 Central on Maize Road.

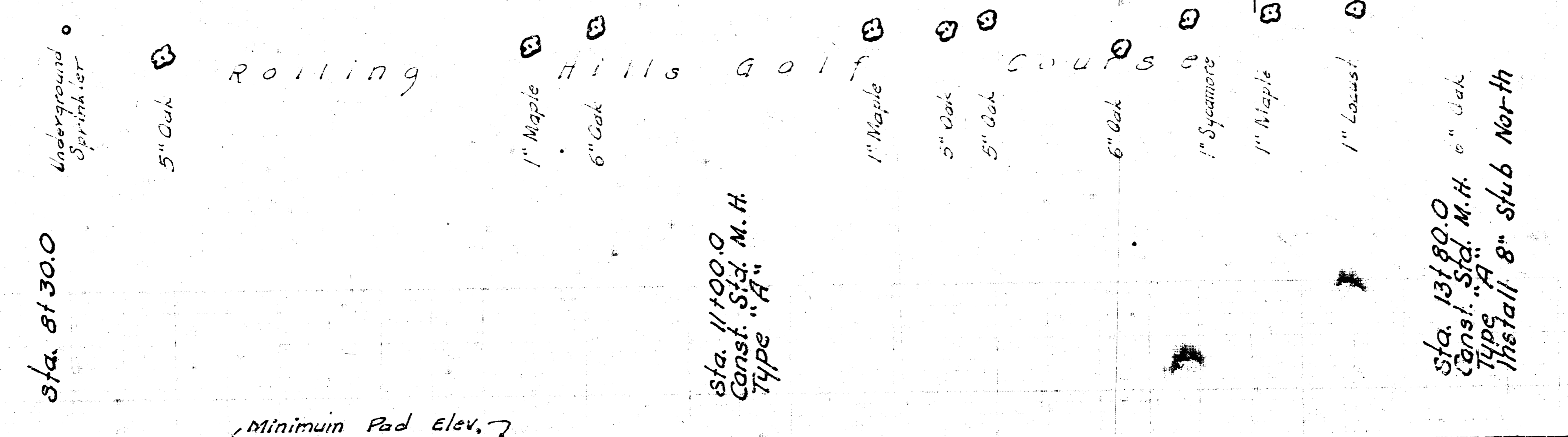
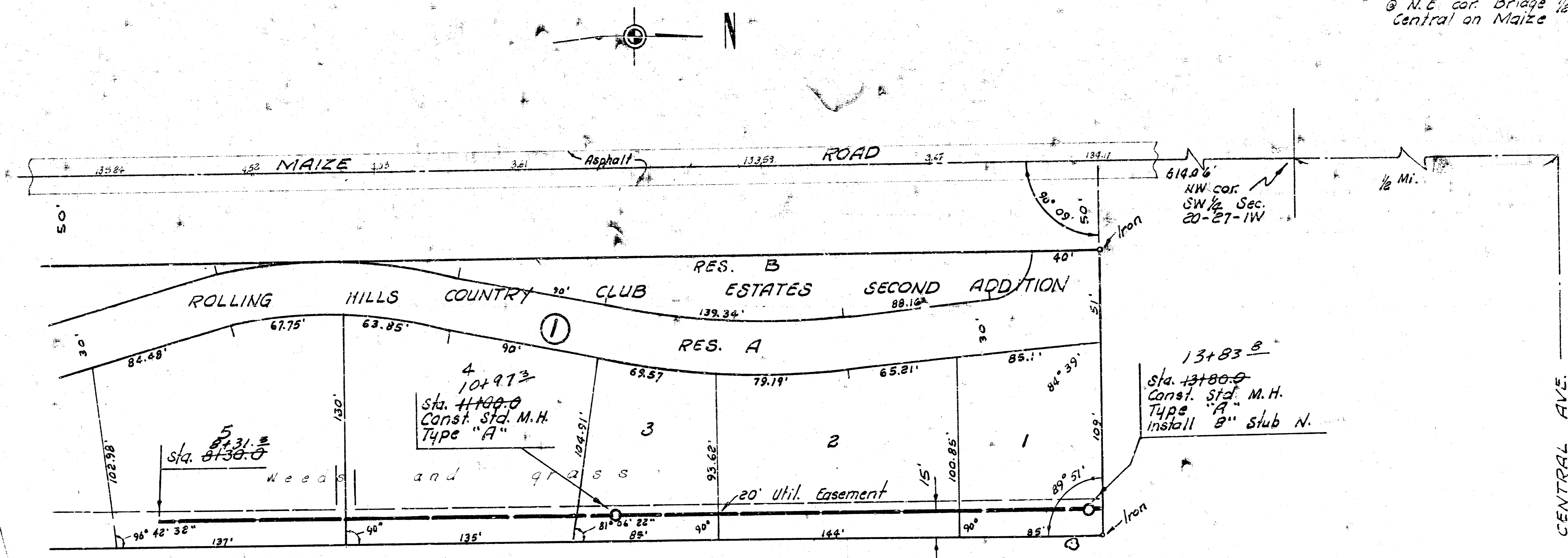


NOTE:
 All exposed Conc. pipe surface to be protected with Plastic lining as approved by the Field Engineer.
 Method of removing top 1/2 of 30" R.C.P. is to be approved by the Field Engineer.

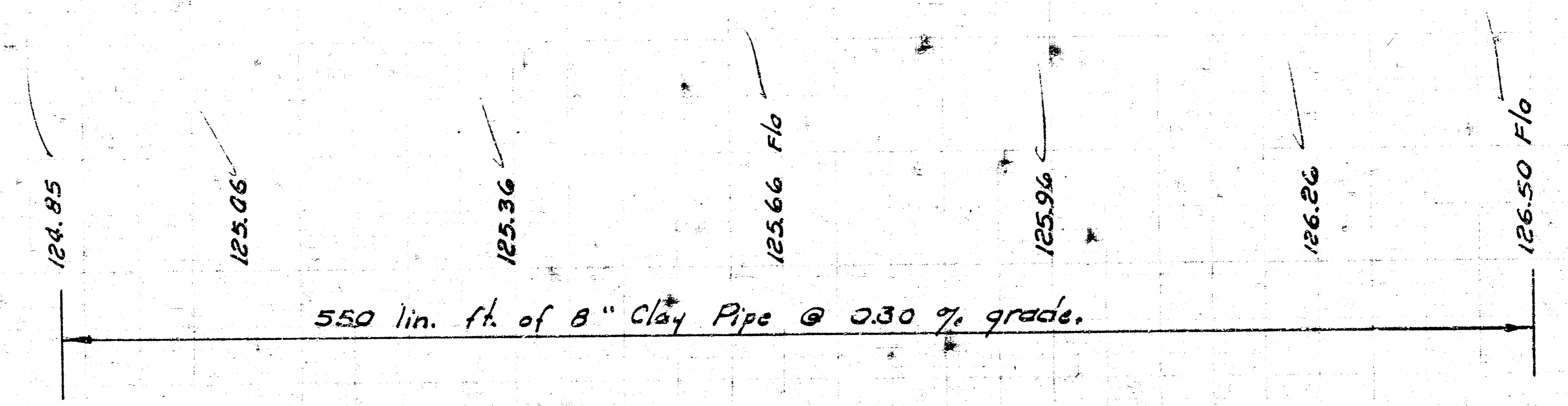
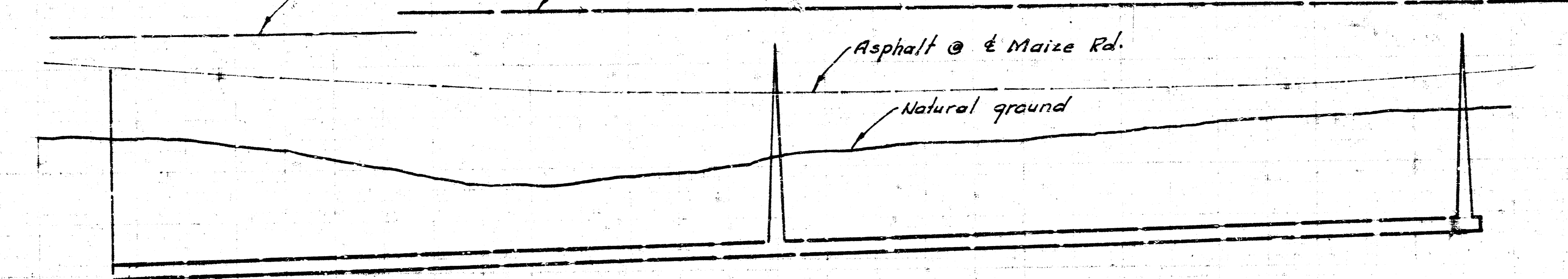


NOTE:
 Outside of brick manhole at Sta. 0+00.0 shall be given two coats of Bitumastic Super Service Black as manufactured by Kapper's Chemicals and Coatings, or an approved equal. Application shall be according to manufacturer's recommendations.

Wyo-Bond Bentonite as manufactured by Archer Daniels Midland Co., or an approved equal shall be mixed with the backfill material lying below water table elevation at the manhole location at Sta. 0+00.0. Approximately 40 Pounds of Bentonite is to be uniformly mixed with the backfill material.



NOTE:
 Contractor to contact developer to establish top of manhole elevations.



SANITARY SEWER
 FOR ROLLING HILLS COUNTRY CLUB ESTATES SECOND ADDITION
 PRIVATE PROJECT NO. AAKB502053