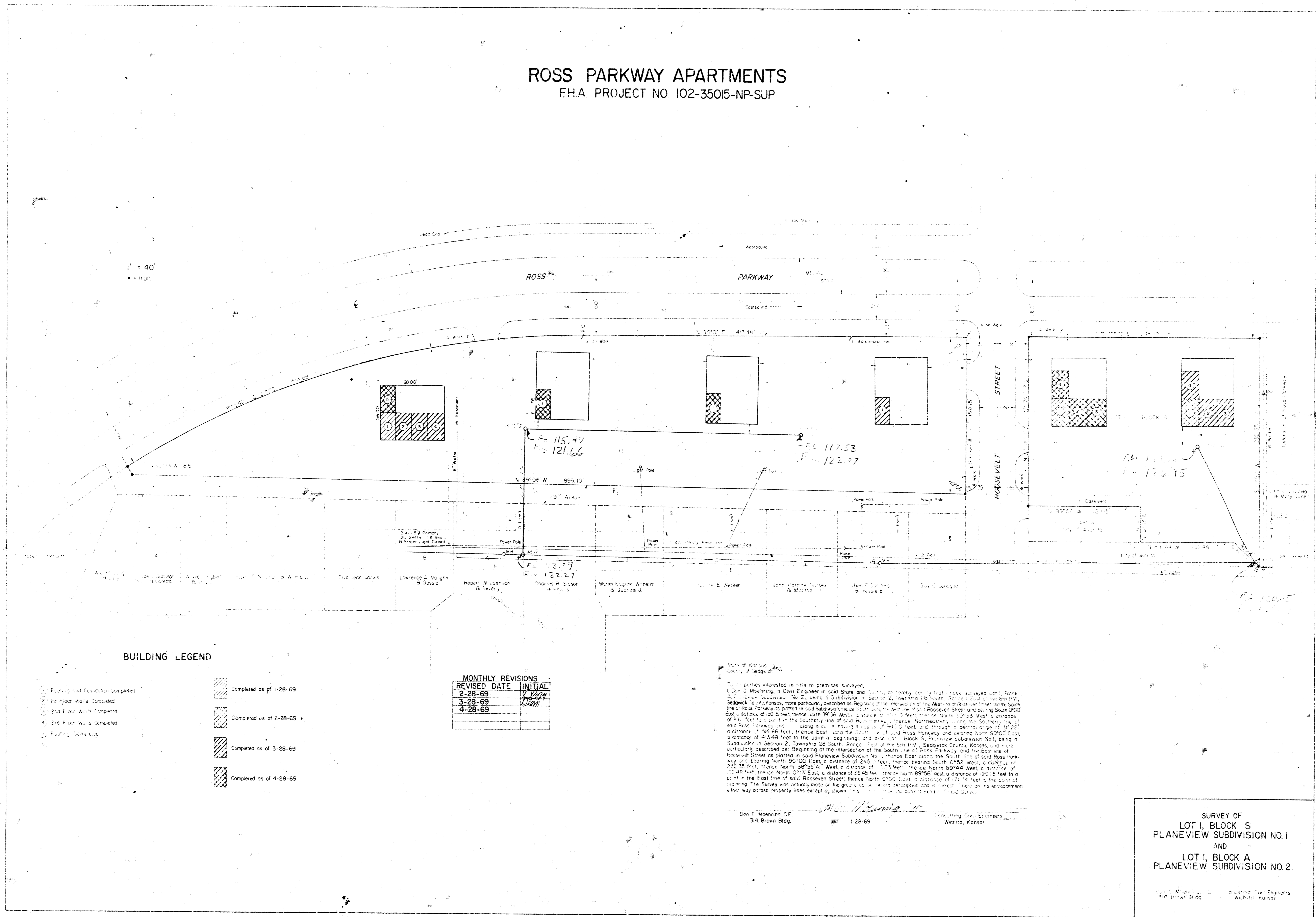


ROSS PARKWAY APARTMENTS  
F.H.A. PROJECT NO. 102-35015-NP-SUP

1" = 40'  
• 11 ft



BUILDING LEGEND

- Paving and Foundation Completed
- 1st Floor Work Completed
- 2nd Floor Work Completed
- 3rd Floor Work Completed
- Paving Completed
- ▨ Completed as of 1-28-69
- ▩ Completed as of 2-28-69
- ▧ Completed as of 3-28-69
- ▦ Completed as of 4-28-69

MONTHLY REVISIONS

REVISED DATE	INITIAL
2-28-69	W. J. [Signature]
3-28-69	[Signature]
4-28-69	[Signature]

State of Kansas, ss:  
County of [Blank]

I, [Signature], a Civil Engineer in said State and duly qualified, do hereby certify that I have surveyed Lot 1, Block S, Planeview Subdivision No. 1, being a subdivision in Section 2, Township 28 South, Range 10 East of the 6th P.M., Sedgewick County, Kansas, more particularly described as follows: Beginning at the South line of said Ross Parkway and being 150 feet, thence South 99° 57' West, a distance of 100 feet, thence North 00° 00' West, a distance of 100 feet to a point on the Southern line of said Ross Parkway, thence Northwesterly along the line of said Ross Parkway, and being a curve in radius of 244.7 feet and through a central angle of 90° 00' to a distance of 100 feet, thence East along the line of said Ross Parkway and being North 89° 00' East, a distance of 415.48 feet to the point of beginning, and also Lot 1, Block S, Planeview Subdivision No. 1, being a subdivision in Section 2, Township 28 South, Range 10 East of the 6th P.M., Sedgewick County, Kansas, and more particularly described as follows: Beginning at the intersection of the South line of Ross Parkway and the East line of Roosevelt Street as platted in said Planeview Subdivision No. 1, thence East along the South line of said Ross Parkway and being North 89° 00' East, a distance of 244.7 feet, thence North 00° 00' West, a distance of 244.7 feet, thence North 89° 00' West, a distance of 100 feet, thence North 89° 00' West, a distance of 100 feet to a point on the East line of said Roosevelt Street, thence North 00° 00' East, a distance of 100 feet to the point of beginning. The survey was actually made on the ground on [Blank] and is correct. There are no encroachments within any cross property lines except as shown.

Don E. Worsing, C.E.  
314 Brown Bldg.  
1-28-69  
Consulting Civil Engineers  
Wichita, Kansas

SURVEY OF  
LOT 1, BLOCK S  
PLANEVIEW SUBDIVISION NO. 1  
AND  
LOT 1, BLOCK A  
PLANEVIEW SUBDIVISION NO. 2

Don E. Worsing, C.E.  
314 Brown Bldg.  
Consulting Civil Engineers  
Wichita, Kansas