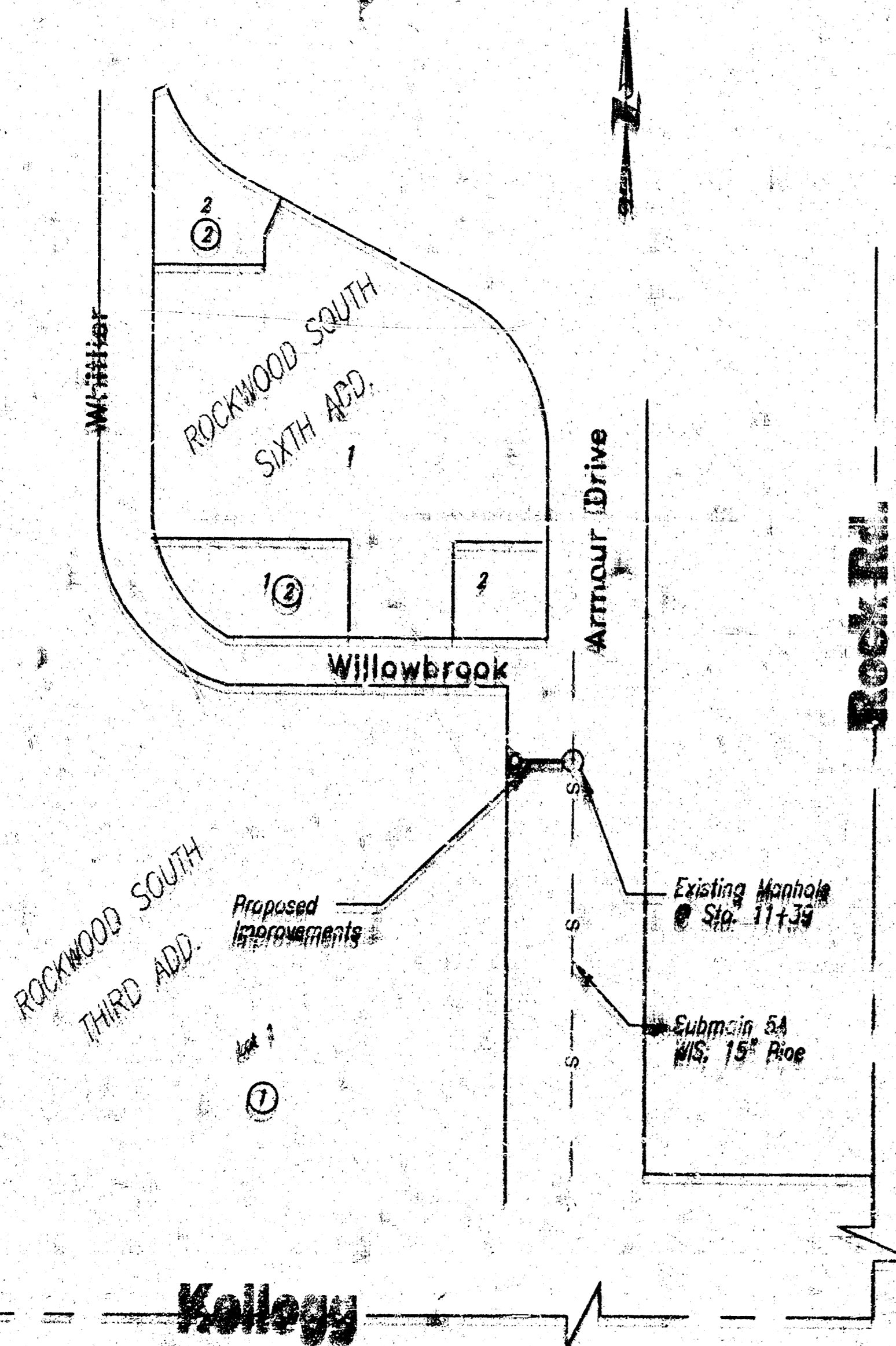


# CITY OF WICHITA, KANSAS SANITARY SEWER IMPROVEMENTS

TO SERVE RUSTY ECKFORD ON ARMOUR DRIVE  
LOT 1, BLOCK 1, ROCKWOOD SOUTH THIRD ADD.  
WICHITA, SEDGWICK COUNTY, KANSAS

PRIVATE PROJECT NO.: 873 PPS

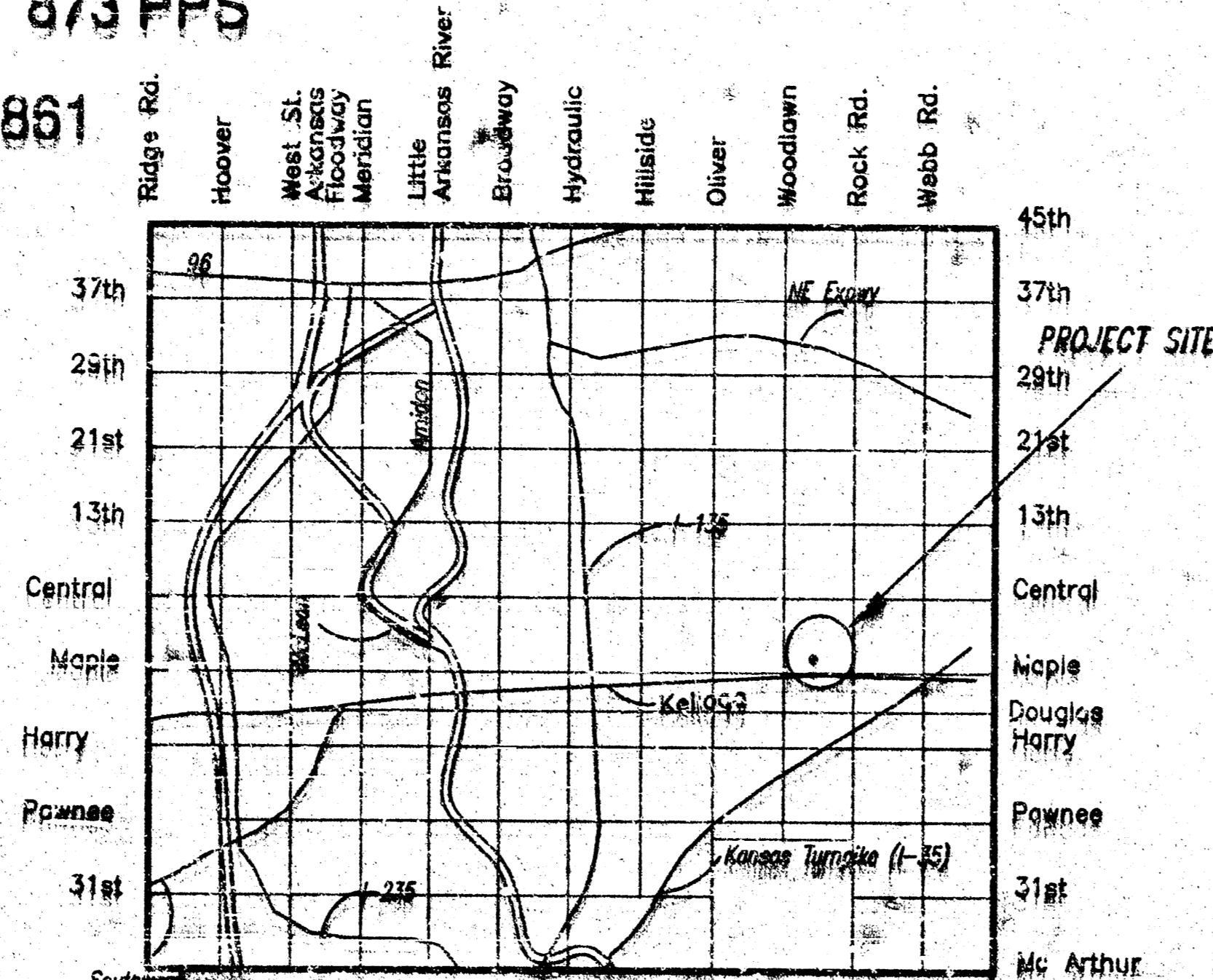
INDEX CODE.: 607861



LOCATION MAP

MICHAEL E. LINDEBAK, CITY ENGINEER

**Note:**  
Cuts made to paved surfaces on public will be repaired by the city's Contractor and charged against the owner/applicant. Unit repair prices are available from the City at 268-4418. A surcharge may be applicable. Call 268-4418 for details.



**NOTE TO CONTRACTOR:**  
INSPECTION AND TESTING FOR THIS PROJECT IS TO BE PROVIDED BY A LICENSED CONSULTING ENGINEERING FIRM UNDER CONTRACT WITH THE OWNER/DEVELOPER. SAID INSPECTION TO BE IN ACCORDANCE WITH THE CITY OF WICHITA STANDARD ENGINEERING PRACTICES AND CERTIFIED BY A LICENSED PROFESSIONAL ENGINEER. NO WORK SHALL BE PERFORMED IN DEDICATED EASEMENTS OR PUBLIC RIGHT-OF-WAY BY THE CONTRACTOR WITHOUT SUCH INSPECTION NOR SHALL ANY WORK BE COMMENCED IN DEDICATED EASEMENTS OR PUBLIC RIGHT-OF-WAY WITHOUT WRITTEN AUTHORIZATION BY THE CITY ENGINEER.

APPROVED AS NOTED  
BY CITY ENGINEER OF WICHITA:  
SANITARY SEWER: URH 12/15/99  
STORM SEWER: \_\_\_\_\_  
DRIVEWAY APPROACH: \_\_\_\_\_  
WATER MAINS: \_\_\_\_\_  
PAVING: \_\_\_\_\_

**GENERAL NOTES:**

1. CONTRACTOR WILL BE REQUIRED TO PROVIDE A MINIMUM ADVANCE NOTICE OF TWENTY-FOUR (24) HOURS TO UTILITY COMPANIES PRIOR TO STARTING ANY EXCAVATION AS FOLLOWS:

- KANSAS GAS & ELECTRIC 316-261-6421
- KCE GAS 316-242-8350
- SOUTHWESTERN BELL TELEPHONE CO. 316-383-0454
- WICHITA WATER DEPARTMENT 316-268-4555
- MULTIMEDIA CORPORATION 316-262-9270
- WICHITA SEWER MAINTENANCE 316-268-4210
- KANSAS ONE-CALL 1-800-2470

2. CONTRACTOR SHALL NOT START WORK ON THE PROJECT UNTIL THE PROJECT INSPECTOR IS ASSIGNED TO THE PROJECT AND IS PRESENT ON THE SITE. ANY WORK DONE WITHOUT INSPECTION WILL BE REQUIRED TO BE UNCOVERED FOR INSPECTION.

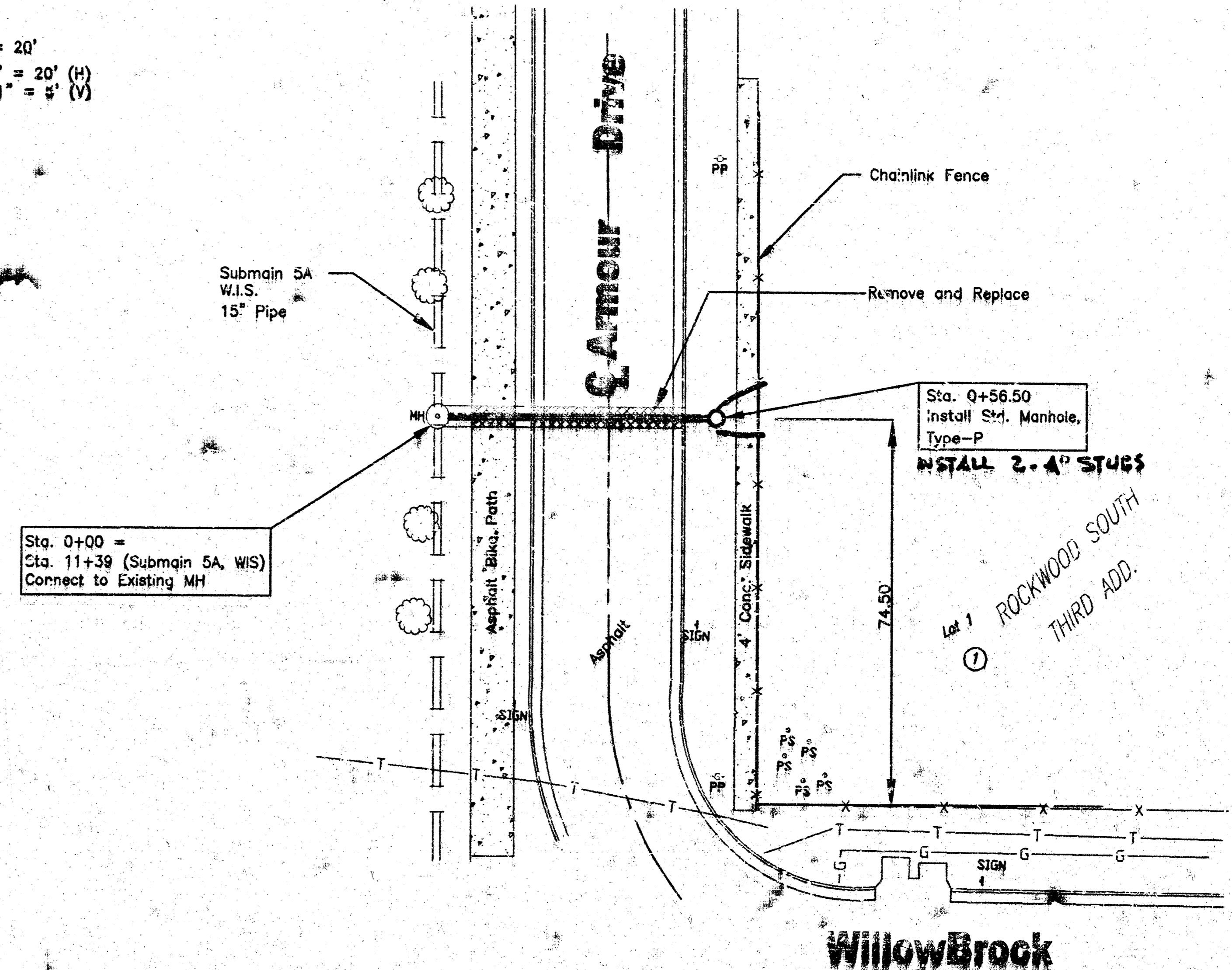
3. EXISTING UTILITIES AND THEIR LOCATIONS, AS SHOWN ON THE PLANS, REPRESENT THE BEST INFORMATION OBTAINABLE FOR DESIGN. LOCATION INFORMATION HAS BEEN OBTAINED FROM THE VARIOUS UTILITY COMPANIES AND IS EITHER FROM COMPANY RECORD DRAWINGS OR COMPANY PROVIDED FIELD LOCATIONS. THE CONTRACTOR WILL BE REQUIRED TO WORK AROUND EXISTING UTILITIES WITHIN THE RIGHT-OF-WAY WHICH DO NOT CONFLICT WITH PROPOSED CONSTRUCTION.

4. RUBBLE FROM THE REMOVAL OF MISCELLANEOUS STRUCTURES AND EXCESS EXCAVATION WHICH IS TO BE WASTED SHALL BE DISPOSED OF ON SITES TO BE PROVIDED BY THE CONTRACTOR. THESE SITES SHALL BE APPROVED BY THE ENGINEER AS TO SUITABILITY, APPEARANCE AND SITE LOCATION. LOCATIONS THAT IN THE OPINION OF THE ENGINEER, WILL LEAVE UNSATISFACTORY APPEARANCE WILL NOT BE APPROVED.

5. THE CONTRACTOR SHALL BE RESPONSIBLE FOR PRESERVING PROPERTY IRONS. THE CONTRACTOR WILL BE REQUIRED TO RE-ESTABLISH ANY PROPERTY IRONS WHICH ARE DAMAGED OR DESTROYED BY HIS CONSTRUCTION OPERATIONS. SUCH IRONS SHALL BE RE-ESTABLISHED BY A LICENSED LAND SURVEYOR IN ACCORDANCE WITH STATE LAW.

6. ALL AREAS DISTURBED DURING CONSTRUCTION SHALL BE SEEDDED PER CITY OF WICHITA REQUIREMENTS.

SCALE:  
PLAN : 1" = 20'  
PROFILE : 1" = 20' (H)  
1" = 4' (V)



Connect to Existing MH  
Top Elev. = 150.33

Install Std. MH, Type-P  
Top Elev. = 151.50

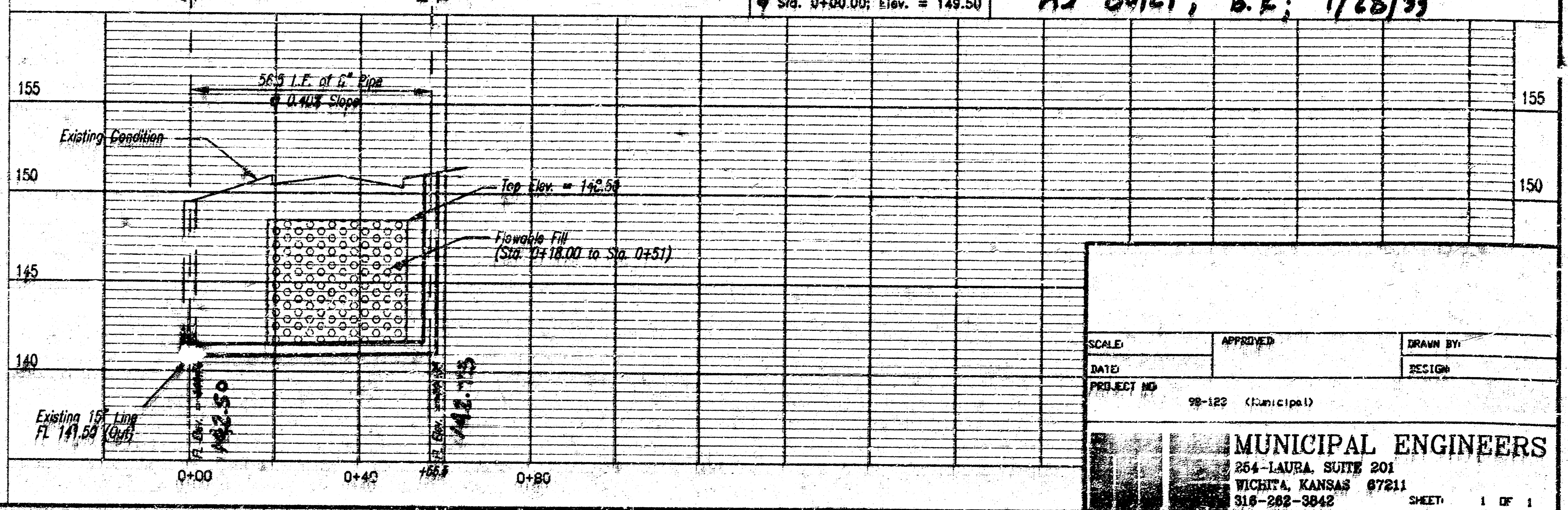
Booked  
P-69  
4-12-99  
RDL



McCullough Exc.

BENCH MARK: Top of Manhole  
Sta. 0+00.00; Elev. = 149.50

AS BUILT; B.K.; 1/28/99



SCALE	APPROVED	DRAWN BY
DATE		DESIGN
PROJECT NO.	98-122 (Municipal)	
<b>MUNICIPAL ENGINEERS</b>		
264-LAUREL SUITE 201 WICHITA, KANSAS 67211 316-268-3845		
		SHEET 1 OF 1

20 40 10 20