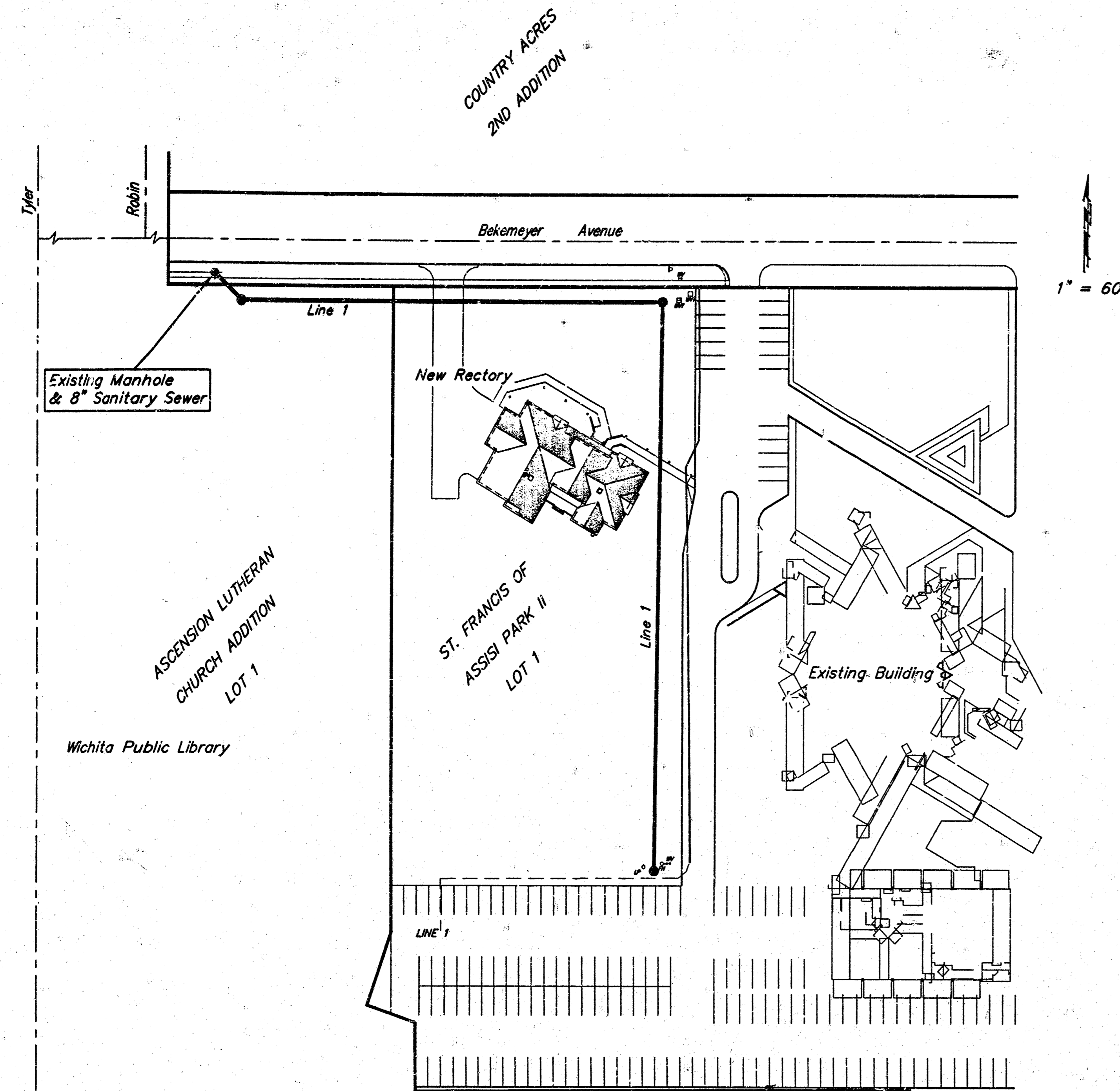


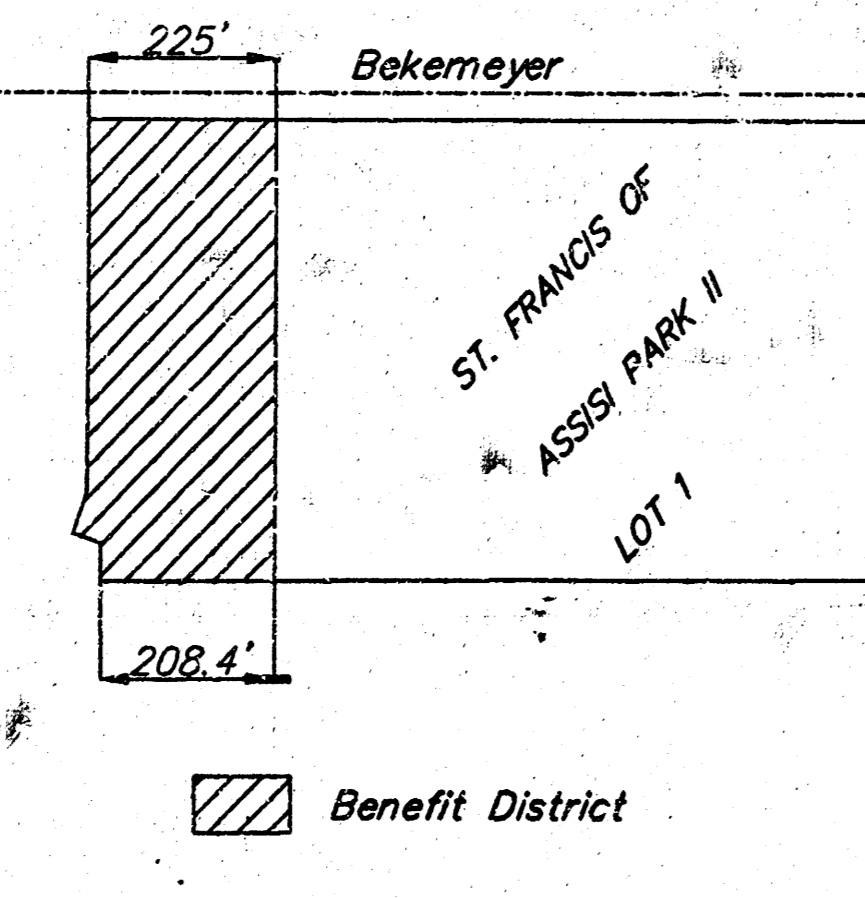
# SANITARY SEWER TO SERVE ST. FRANCIS OF ASSISI PARK II LOT 1

Private Project Number  
**1086 PPS (607861)**

CITY OF WICHITA, KANSAS  
Michael E. Lindebak, P.E. City Engineer  
September 2001



ASCENSION LUTHERAN  
CHURCH ADDITION  
LOT 1  
Wichita Public Library



1" = 60'

**BENCHMARKS:**

1. RR Spike in PP, East Side, 185 ± North of SW Corner Lot 2, Tyler Acres Fifth Addition.  
Elevation: 148.80 City Datum
2. " " Top of Curb adjacent to NE Corner Lot 1, Ascension Lutheran Church Addition.  
Elevation: 151.06 City Datum

**LEGAL DESCRIPTION:**

Lot 1, St. Francis of Assisi Park II, Wichita, Sedgewick County, Kansas

*Booked  
p. 199  
11/20/01  
KPL*

As Built 11/01 KK

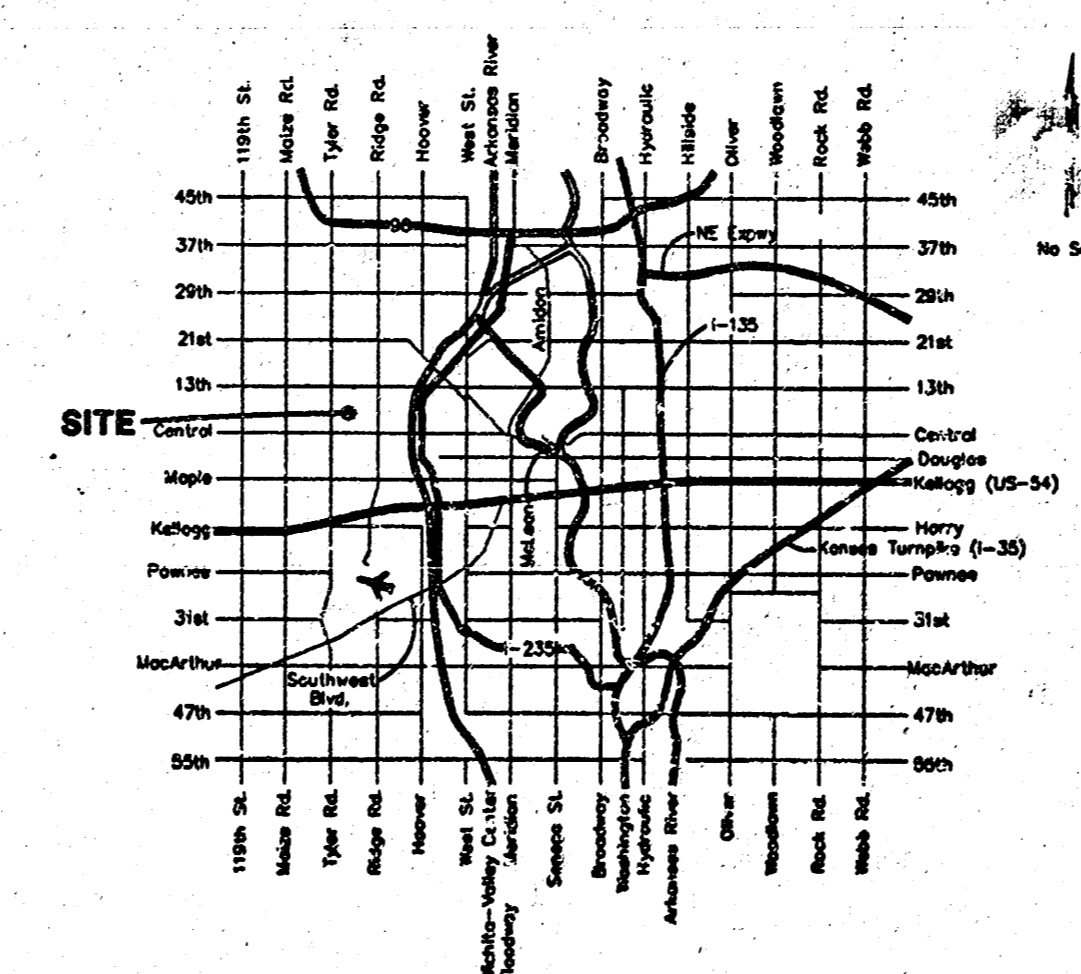
**General Notes**

*MIES CONSY.*

**Index**

Cover Sheet	1
Plan/Profile Sheet	2
Manhole Detail	3
Ring & Cover Detail	4
BMP Erosion Details	5
Copy Of Plat	6

**Location Map**



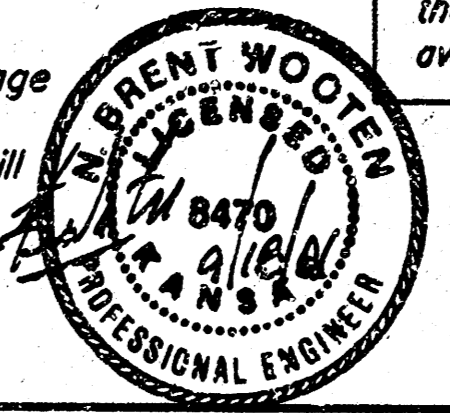
1. Contractor will be required to provide notice to utility companies a minimum of forty-eight (48) hours prior to any excavation, as follows:  
Kansas One-Call 667-2470  
The Contractor must notify the following in case of an emergency:  
Cox Communications 262-0661  
Kansas Gas Service Company 383-8600  
Kansas Gas & Electric Company 383-8600  
Peoples Gas Company 1-800-303-0357  
Southwestern Bell Telephone Company 1-800-870-8390  
City of Wichita Water Department 268-4908  
City of Wichita Sewer Department 268-4071
2. Utility service lines, poles, valve boxes, meters, et cetera are to be adjusted as necessary by others prior to construction unless the plans specifically call for their adjustment by the Contractor or unless the plans specifically identify a utility to be adjusted by its owner during construction. Existing utilities and their location, as shown on the plans represent the best information obtainable for design and shall be field verified. The contractor will be required to work around existing utilities within the right-of-way which do not conflict with proposed construction.
3. Contractor shall not start work on the project until the project inspector is assigned to the project and is present on the site. Any work done without inspection will be required to be uncovered for inspection.
4. All disturbed R/W areas not intended for pavement or sidewalk construction shall be seeded with Kansas Premium Fescue Blend at a rate of 8 lb./1000 Sq. Ft., fertilized with a 15-20-6 ratio at a rate of 4 lb./1000 Sq. Ft., and mulched with Prairie Hay at a rate of 92 lb./1000 Sq. Ft. Mulch shall be "patted" with forks or punched into soil to reduce loss due to wind.
5. The Contractor shall be responsible for maintaining continuous flow of sewage through construction. Contractor's proposed method for maintaining sewage flow shall be approved by the Engineer. Cost of maintaining flow of sewage through construction will not be paid for directly and this cost shall be considered as subsidiary to the other pay items of work.
6. Rubble from the removal of miscellaneous structures and excess excavation which is to be wasted shall be disposed of on sites to be provided by the Contractor. These sites shall be approved by the Engineer as to suitability, appearance and site location. Locations that, in the opinion of the Engineer, will leave an unsightly appearance will not be approved. All disposal sites must be approved by the Kansas Department of Health and Environment. Material either stockpiled or disposed of in a flood plain would require a Kansas State Board of Agriculture permit. Any material dumped in waters of the United States or wetlands is subject to U.S. Corps. of Engineers permitting regulations. Any material buried or stockpiled beyond approved construction limits would require additional archaeological investigations unless buried in a previously approved borrow location.

APPROVED AS NOTED  
BY CITY ENGINEER OF WICHITA

Sanitary Sewers VRH 9/18/01

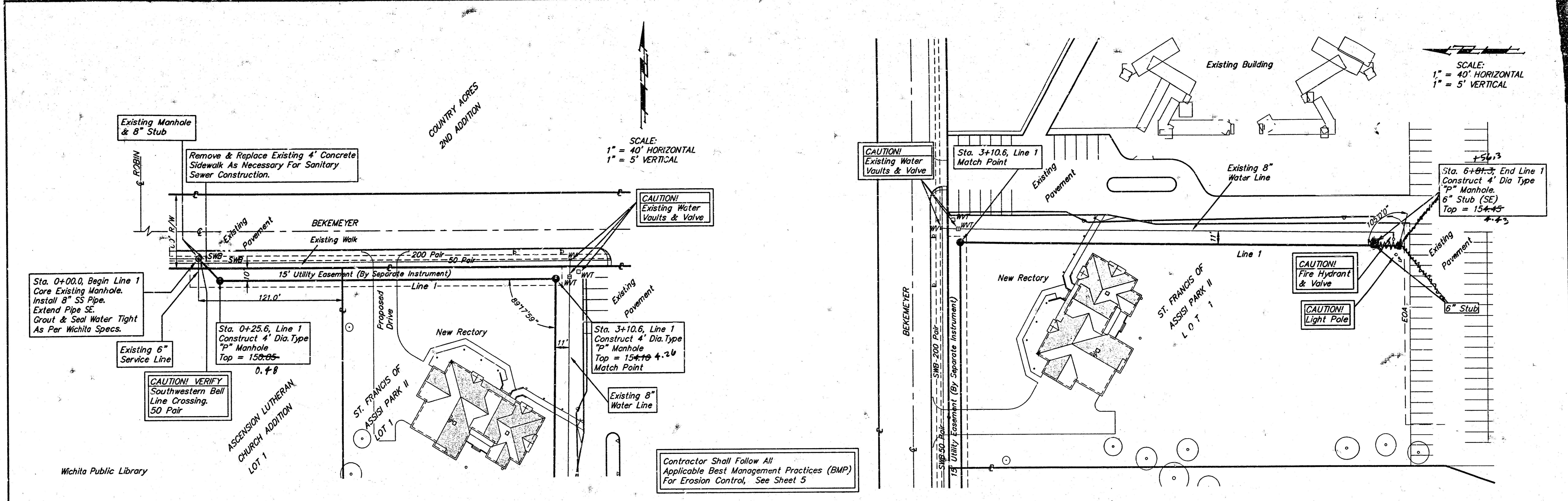
NOTE TO CONTRACTORS

Installation, inspection and testing for this project is to be provided by a Licensed Consulting Engineering Firm under contract with the Owner/Developer. Said inspection to be in accordance with the City of Wichita standard construction engineering practices and certified by a Licensed Professional Engineer. No work shall be performed in dedicated easements or public right-of-way by the Contractor without such inspection nor shall any work be commenced without written authorization by the City Engineer. All Construction and Materials shall comply with the City of Wichita Specifications and Standards (on file and available in the City Engineer's Office).

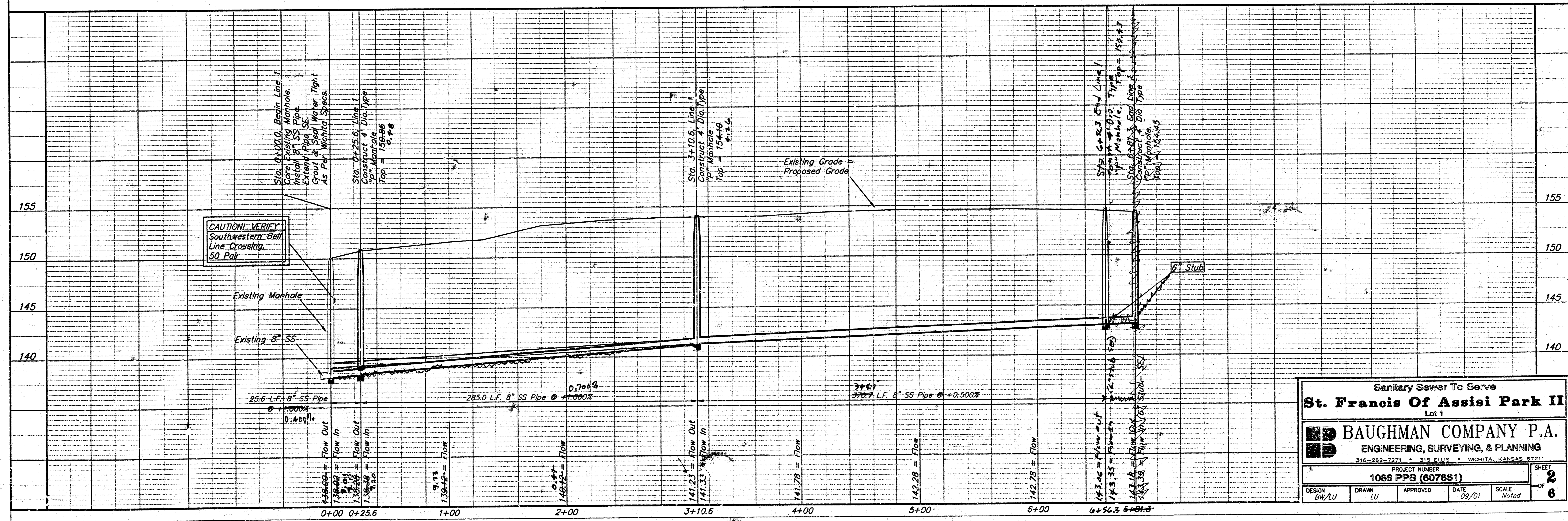


**BAUGHMAN COMPANY P. A.**  
ENGINEERING, SURVEYING, & PLANNING  
316-262-7271 • 316 ELLIS • WICHITA, KANSAS 67211

SCALE:  
1" = 40' HORIZONTAL  
1" = 5' VERTICAL



Contractor Shall Follow All Applicable Best Management Practices (BMP) For Erosion Control, See Sheet 5



Sanitary Sewer To Serve  
**St. Francis Of Assisi Park II Lot 1**

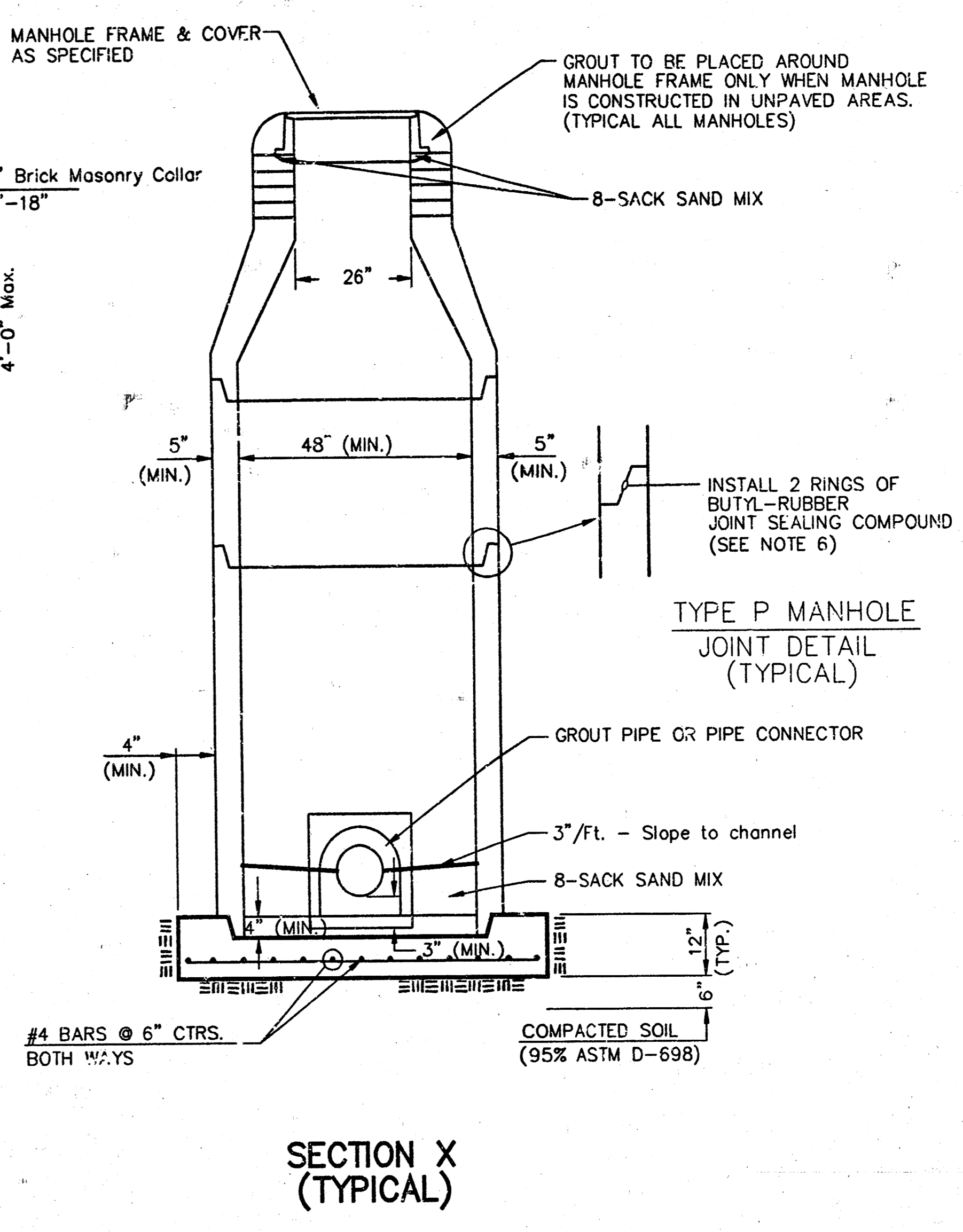
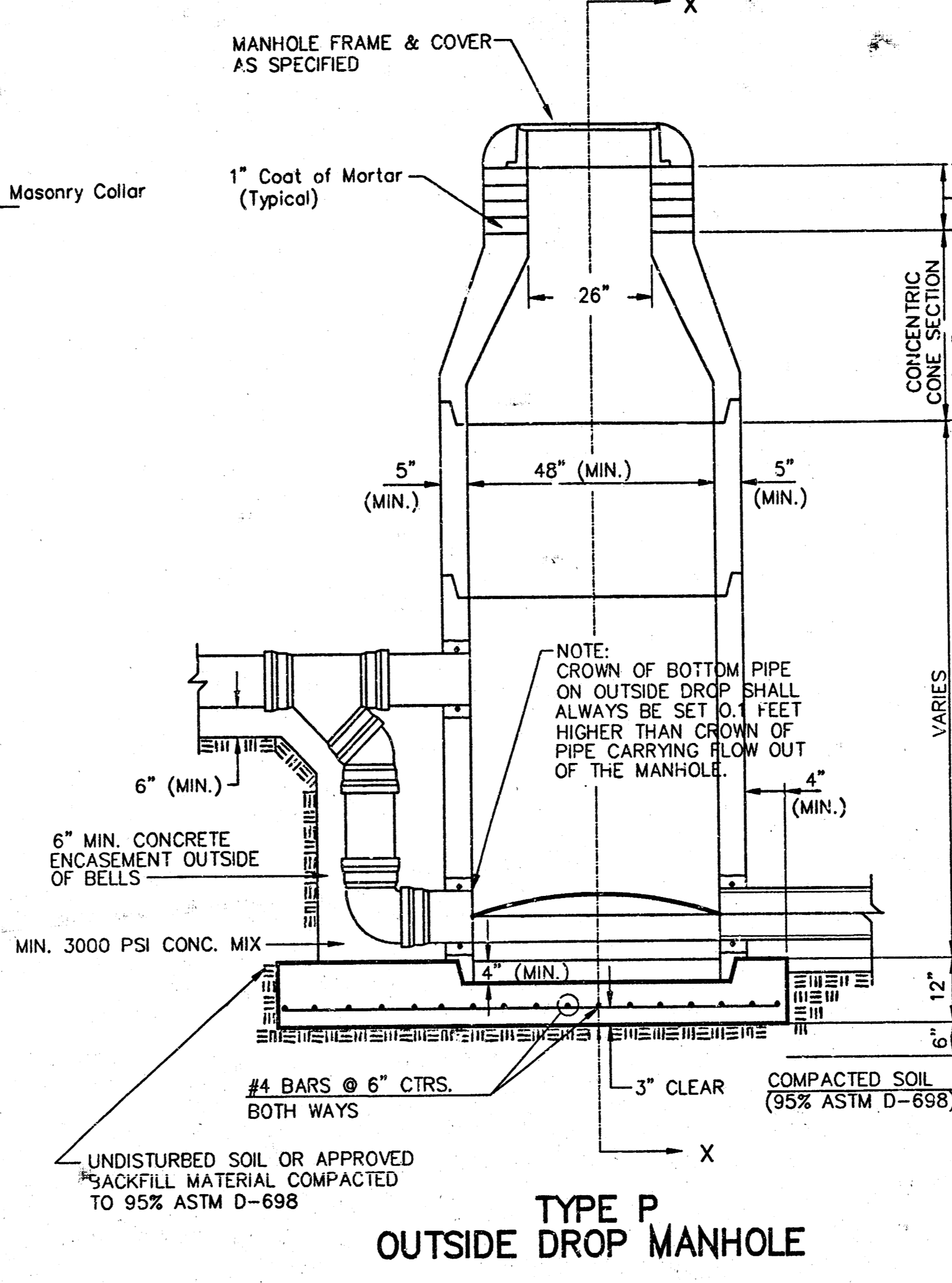
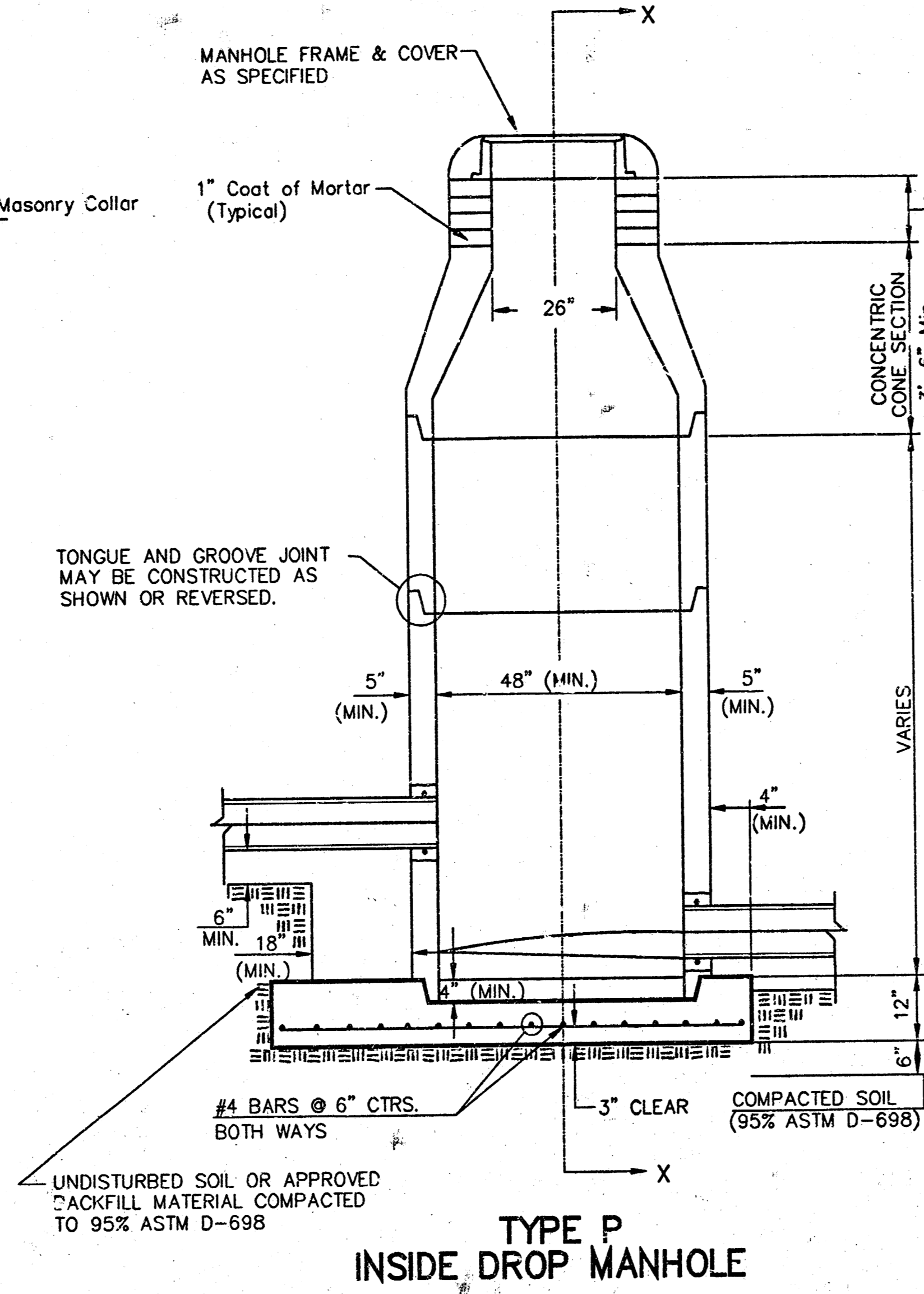
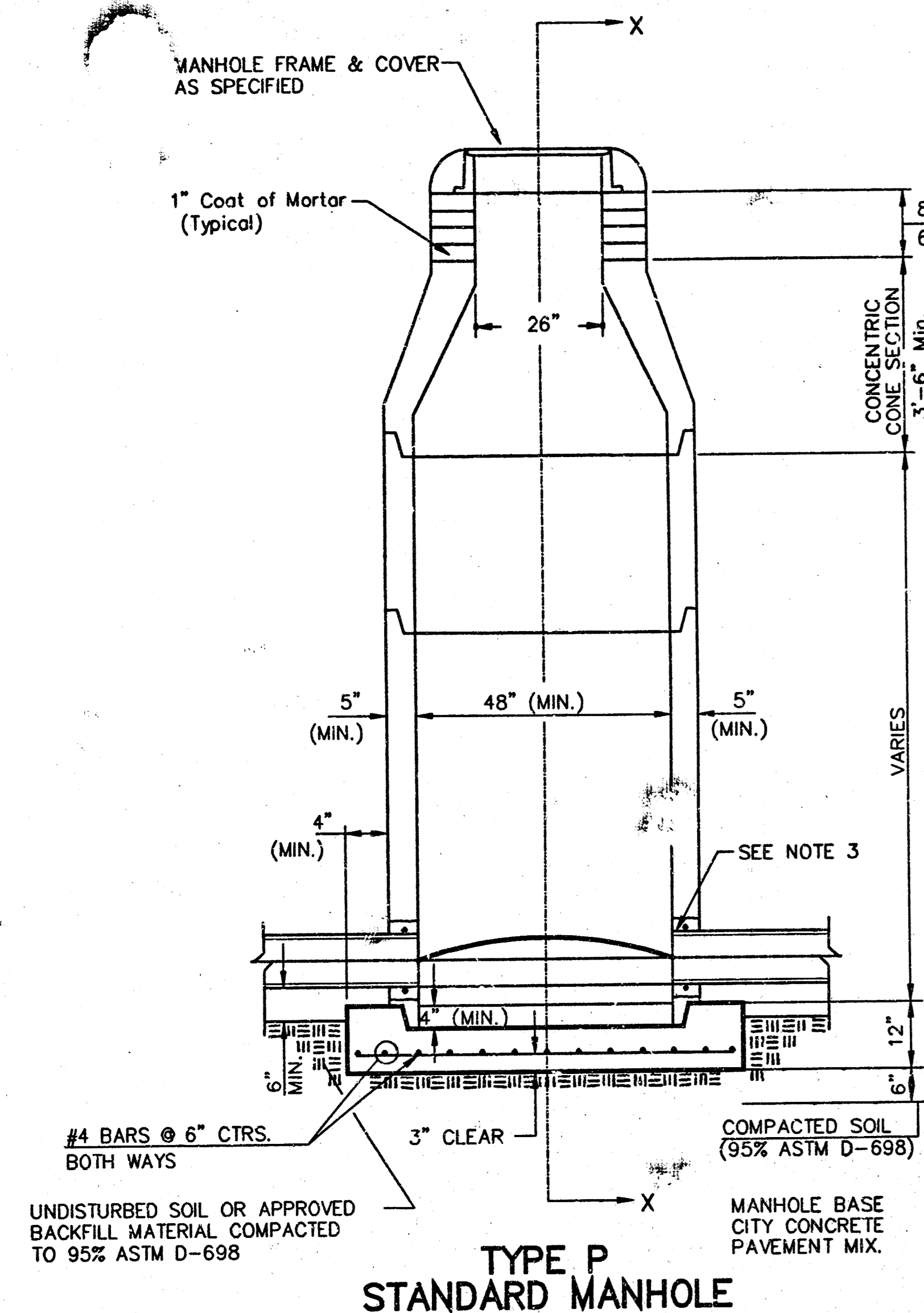
**BAUGHMAN COMPANY P.A.**  
ENGINEERING, SURVEYING, & PLANNING  
316-262-7271 • 315 ELLIS • WICHITA, KANSAS 67211

PROJECT NUMBER  
**1086 PPS (607861)**

DESIGN BW/LU	DRAWN LU	APPROVED	DATE 09/01	SCALE Noted	SHEET 2 OF 6
-----------------	-------------	----------	---------------	----------------	-----------------

ST-1086-SS-1R2 01-01-1916

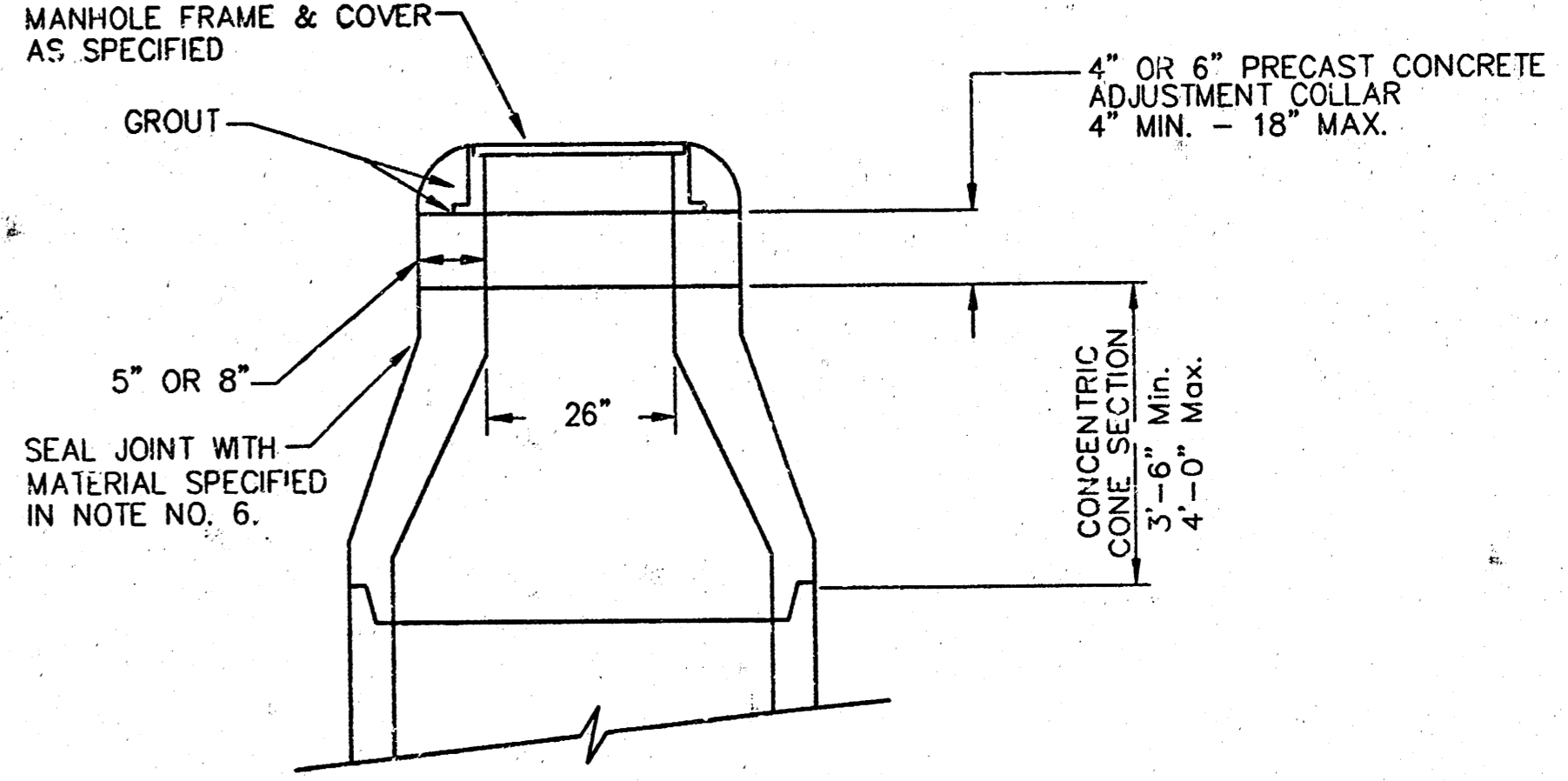
# SEWER APPURTENANCES DETAILS



- GENERAL NOTES**  
**PRECAST MANHOLE NOTES**
1. ALL PRECAST CONCRETE MANHOLE SECTIONS SHALL CONFORM TO THE LATEST REVISIONS OF A.S.T.M. C478 AS MODIFIED BY THE SPECIFICATIONS.
  2. NON-SHRINK GROUT SHALL BE NON-METALLIC TYPE.
  3. APPROVED FLEXIBLE WATERSTOP GASKETS SHALL BE INSTALLED TO JOIN THE SEWER TO THE MANHOLE WALL WHEN A.B.S. COMPOSITE PIPE OR P.V.C. PIPE IS USED. FOR OTHER TYPES OF PIPE THE SEWER SHALL BE GROUTED IN PLACE WITH NON-SHRINK GROUT. THE SEWER PIPE SHALL BE SUPPORTED WITH CONCRETE ENCASEMENT A MINIMUM OF 3 FEET FROM THE MANHOLE WALL AND TO THE FIRST JOINT FOR V.C.P. SUCH THAT THE JOINT REMAINS FLEXIBLE.
  4. ALL INSIDE SURFACES OF THE CONCRETE MANHOLE WHICH WOULD BE EXPOSED TO SEWER GAS SHALL BE COATED WITH 2 COATS TRENAC SERIES 66 HI-BUILD EPOXYLINE, DRY THICKNESS OF 8 MILS (MIN.)
  5. EXTERIOR MANHOLE WALLS SHALL BE COATED WITH 1 COAT MOBILARMA 633 BITUMINOUS COATING.
  6. JOINT SEALING COMPOUND SHALL BE KENT SEAL NO. 2 OR APPROVED EQUAL.
  7. PRECAST MANHOLES SHALL BE SET AT LEAST 4 INCHES INTO THE MANHOLE BASE.
  8. TOP OF MANHOLE FLOOR SLAB SHALL BE AT LEAST 3 INCHES BELOW THE FLOW LINE OF THE OUTLET PIPE TO INSURE SUFFICIENT MINIMUM THICKNESS OF SHAPED INVERT.
  9. LIFTING HOLES SHALL BE FILLED WITH NON-SHRINK GROUT AND THE INTERIOR SURFACE COATED AS SPECIFIED.
  10. MORTAR USED IN MASONRY CONSTRUCTION SHALL CONTAIN 8 SACKS OF CEMENT PER CUBIC YARD. CONCRETE USED IN MANHOLE BASES SHALL CONFORM TO THE REQUIREMENTS OF CONCRETE FOR CONCRETE PAVEMENT SPECIFICATIONS USING CITY CONCRETE PAVEMENT MIX WITHOUT AIR ENTRAINING ADMIXTURE. MORTAR SHALL BE PLACED AROUND THE MANHOLE RING AS SHOWN ON THE DRAWINGS WHEN MANHOLES ARE CONSTRUCTED IN UNPAVED AREAS. MANHOLES CONSTRUCTED WHERE PIPE SIZES ARE SMALLER THAN 24" SHALL HAVE AN INSIDE DIAMETER OF 4". MANHOLES CONSTRUCTED WHERE PIPE SIZES ARE 24" OR LARGER SHALL HAVE AN INSIDE DIAMETER OF 5". COMPLETED MANHOLE SHALL BE WITHOUT LEAKS AND WATER TIGHT.

11. REINFORCING STEEL SHALL BE INSTALLED IN THE MANHOLE BASES AND SHALL CONSIST OF NO. 4 BARS PLACED ON 6" CENTERS IN BOTH DIRECTIONS. THE MANHOLE BASE REINFORCEMENT SHALL BE PLACED AT LEAST 3" ABOVE THE BOTTOM OF THE MANHOLE BASE. ALL COSTS FOR FURNISHING AND INSTALLING REINFORCING STEEL SHALL BE INCLUDED IN THE UNIT PRICE BID FOR THE MANHOLE.
12. OPENINGS SHALL BE CUT INTO THE MANHOLE WALL WHEN OUTSIDE DROPS ARE CONSTRUCTED ON EXISTING MANHOLES. SUCH OPENINGS CUT INTO EXISTING MANHOLES SHALL BE AS SMALL AS PRACTICAL TO FACILITATE INSTALLING AND GROUTING THE NEW PIPE IN PLACE. WATERSTOP GASKETS SHALL BE USED WITH P.V.C. AND A.B.S. COMPOSITE PIPE. THE NEW PIPE SHALL BE GROUTED INTO THE OPENING USING AN APPROVED NON-SHRINK GROUT FOR THE FULL MANHOLE WALL THICKNESS. THE EXTERIOR OF THE COMPLETED CONNECTION SHALL BE SEALED WITH AN APPROVED BITUMINOUS COATING SUCH THAT THE CONNECTION WILL BE WATER TIGHT. FLOOR OF MANHOLE SHALL BE MODIFIED TO FORM NEW FLOW CHANNEL FOR THE NEW CONNECTION AS INDICATED BY THE DRAWING. THIS WORK, INCLUDING MODIFICATION OF MANHOLE FLOOR, SHALL BE PAID FOR AT THE UNIT PRICE BID FOR OUTSIDE DROP STACK CONSTRUCTED ON EXISTING MANHOLE.
13. THE FLOORS OF ALL MANHOLES SHALL BE SHAPED WITH FLOW CHANNELS SUCH THAT THE MANHOLES WILL BE SELF-CLEANING AND FREE OF AREAS WHERE SOLIDS COULD BE DEPOSITED AS SEWAGE FLOWS THROUGH THE MANHOLE FROM ALL INLET PIPES TO THE OUTLET PIPE. FLOW CHANNELS SHALL BE FORMED TO MATCH THE BOTTOM HALVES OF THE INFLOWING PIPES AND THE OUTFLOWING PIPE AS SHOWN BY THE DRAWINGS EXCEPT FOR INSIDE DROP MANHOLES. FLOW CHANNELS FOR INSIDE DROP MANHOLES SHALL BE CONSTRUCTED AS INDICATED BY THE DRAWING. MANHOLE FLOORS SHALL HAVE SLOPES OF 3 INCHES PER FOOT IN THE AREAS OUTSIDE OF THE FLOW CHANNELS SLOPED TOWARD THE FLOW CHANNELS. PIPES LAID THROUGH MANHOLES SHALL HAVE THE TOP HALF REMOVED TO HEAT LINES FOR THE FULL INSIDE DIAMETER OF THE MANHOLE. MANHOLE FLOORS SHALL THEN BE SHAPED AROUND THE BOTTOM HALF OF THE PIPE WHICH FORMS THE FLOW CHANNEL.
14. PIPES INSTALLED WITHIN THE EXCAVATION MADE FOR THE MANHOLE SHALL BE CRADLED WITH CONCRETE TO THE LIMITS OF THE MANHOLE EXCAVATION. WHEN CLAY PIPE IS USED, THE CRADLE SHALL EXTEND TO THE FIRST JOINT OUTSIDE THE MANHOLE. THE CRADLE SHALL BE TERMINATED AT THE CLAY PIPE JOINT IN A MANNER WHICH WILL MAINTAIN THE FLEXIBILITY OF THE JOINT. COST OF CRADLE WITHIN MANHOLE EXCAVATION OR TO CLAY PIPE JOINTS ADJACENT TO MANHOLE SHALL BE INCLUDED IN THE UNIT PRICE BID FOR THE MANHOLE.

15. MANHOLE COVER CASTINGS AND MANHOLE FRAME CASTINGS SHALL CONFORM TO THE REQUIREMENTS AS INDICATED IN THE STANDARD SPECIFICATIONS AND AS SHOWN IN THE STANDARD DETAIL DRAWING.
16. THE VERTICAL DROP IN INSIDE DROP MANHOLES SHALL NOT EXCEED 2' FOR INFLOWING PIPES SIZED 12" OR SMALLER AND 2' FOR INFLOWING PIPES LARGER THAN 12". THE CROWNS OF INFLOWING PIPES SHALL NEVER BE SET LOWER THAN THE CROWN OF THE OUTFLOWING PIPE.
17. STANDARD MANHOLES AND STANDARD INSIDE DROP MANHOLES SHALL BE BID AS STANDARD MANHOLES FOR THE TYPE AND DIAMETER INDICATED. OUTSIDE DROP MANHOLES SHALL BE BID AS STANDARD OUTSIDE DROP MANHOLES FOR THE TYPE AND DIAMETER INDICATED. ALL MANHOLE DIAMETERS WILL BE 4" UNLESS INDICATED OTHERWISE.
18. A BRICK MASONRY COLLAR SHALL BE INSTALLED BETWEEN THE CAST IRON FRAME AND THE CONCENTRIC CONE. THE COLLAR WILL HAVE 8" WALLS AND A VERTICAL HEIGHT OF 6" MINIMUM AND 18" MAXIMUM. A 1" COAT OF MORTAR WILL BE PLASTERED ON THE OUTSIDE OF THE COLLAR. THE USE OF PRE-CAST CONCRETE SPACERS FOR MANHOLE TOP ADJUSTMENT IS ALSO ALLOWED.



CITY OF WICHITA  
**STD. MANHOLE DETAILS**  
SEWER APPURTENANCES

**BAUGHMAN COMPANY P.A.**  
ENGINEERING, SURVEYING, & PLANNING  
516-262-7271 • 315 S.W. 11th St. • WICHITA, KANSAS 67211

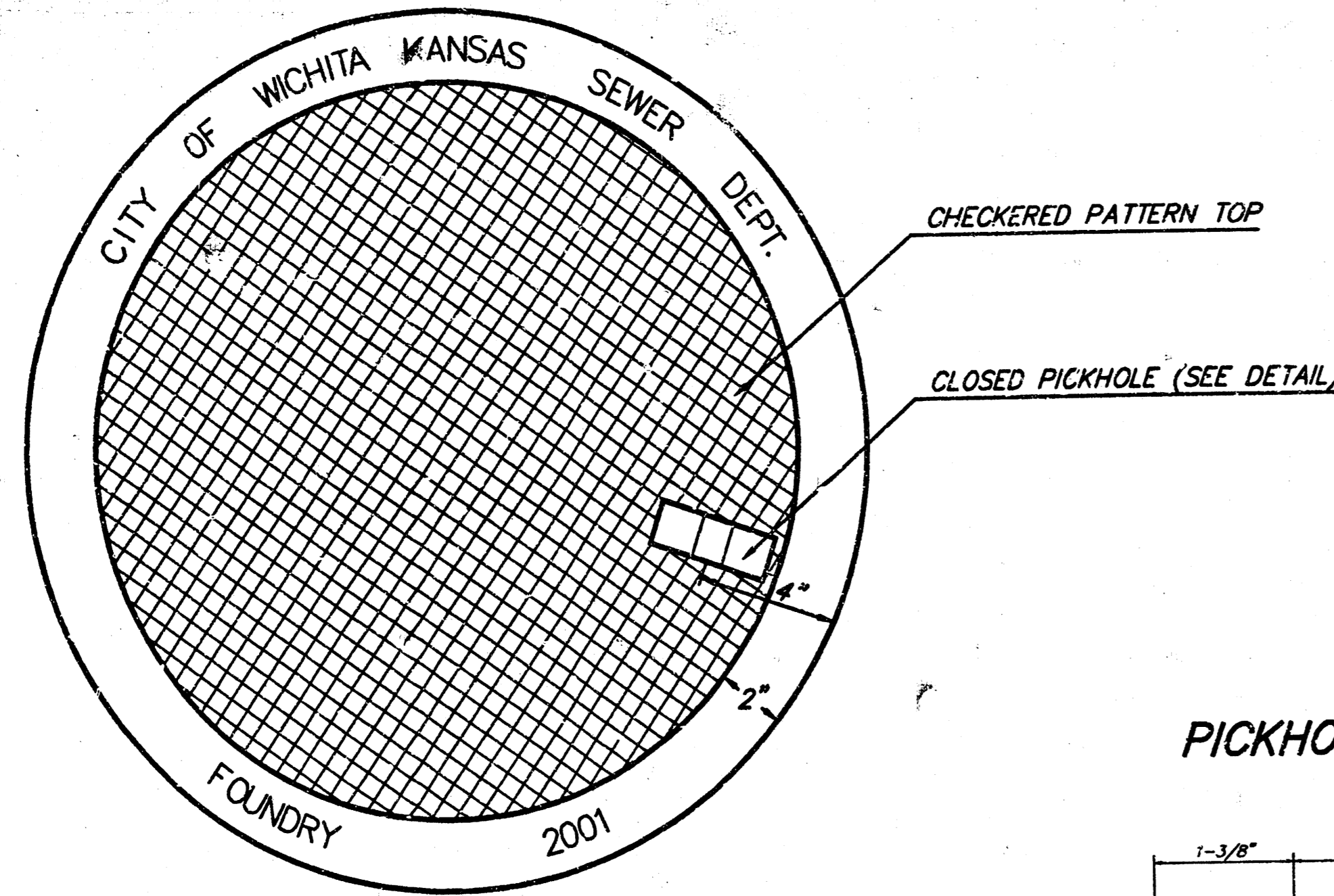
PROJECT NUMBER: 1086 PPS (607861) SHEET 3 OF 6  
DATE: 09/01 SCALE: NONE

DESIGN STAFF: \_\_\_\_\_ APPROVED: \_\_\_\_\_  
DRAWN STAFF: \_\_\_\_\_

# MANHOLE FRAME AND COVER DETAIL

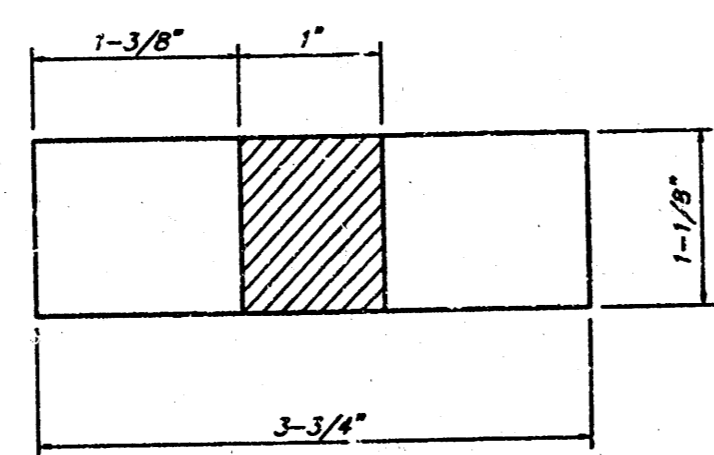
ADOPTED AS STANDARD DESIGN BY  
CITY OF WICHITA, KANSAS

MANHOLE COVER  
Weight = 180 Lbs.

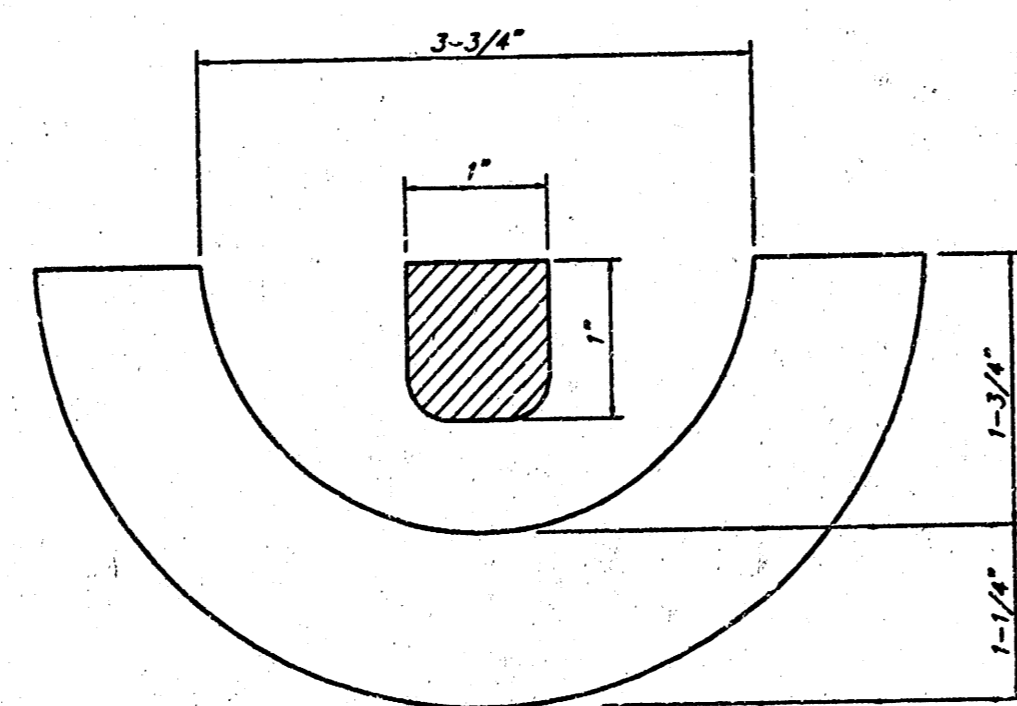


TOP VIEW

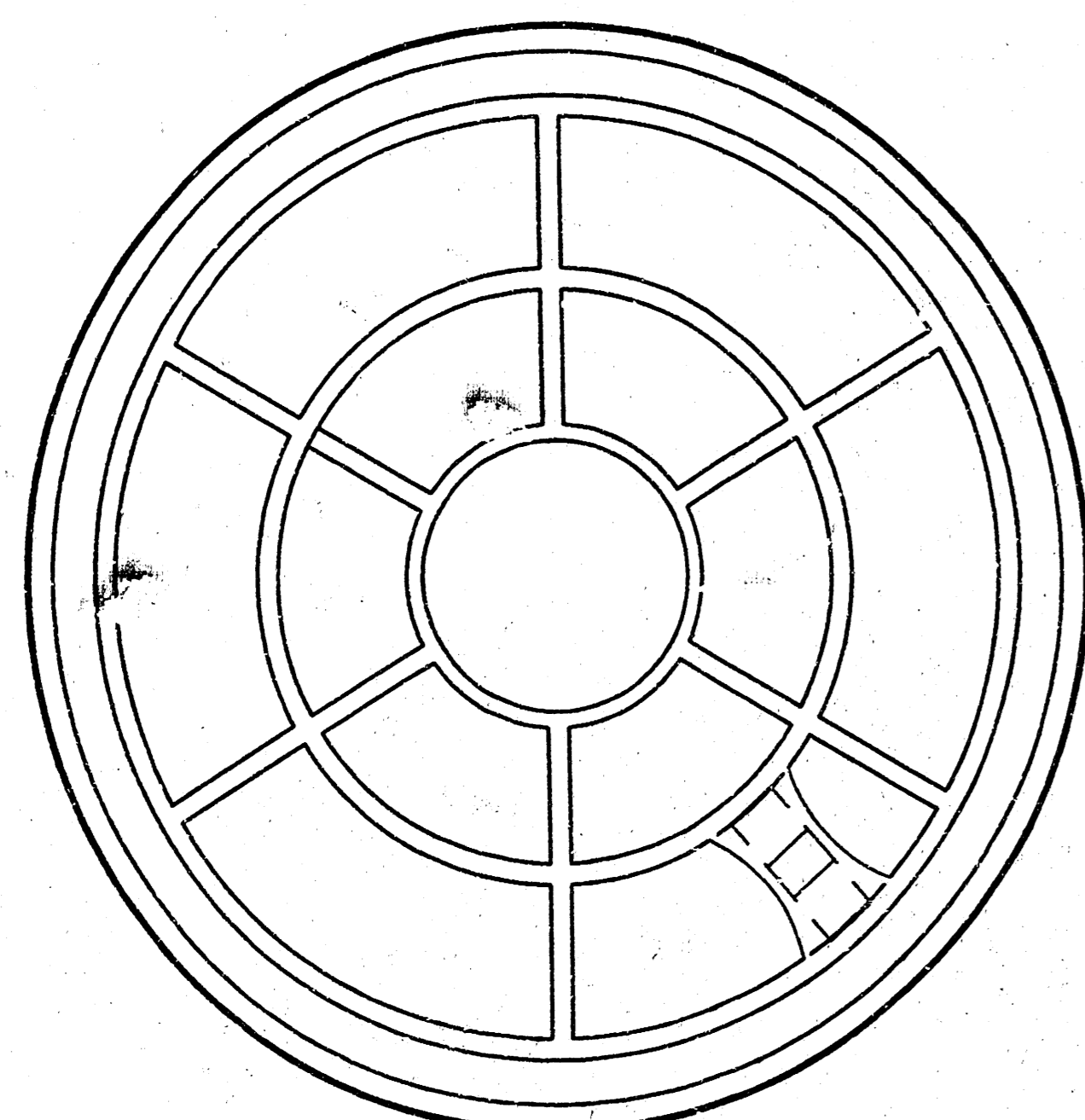
PICKHOLE DETAIL



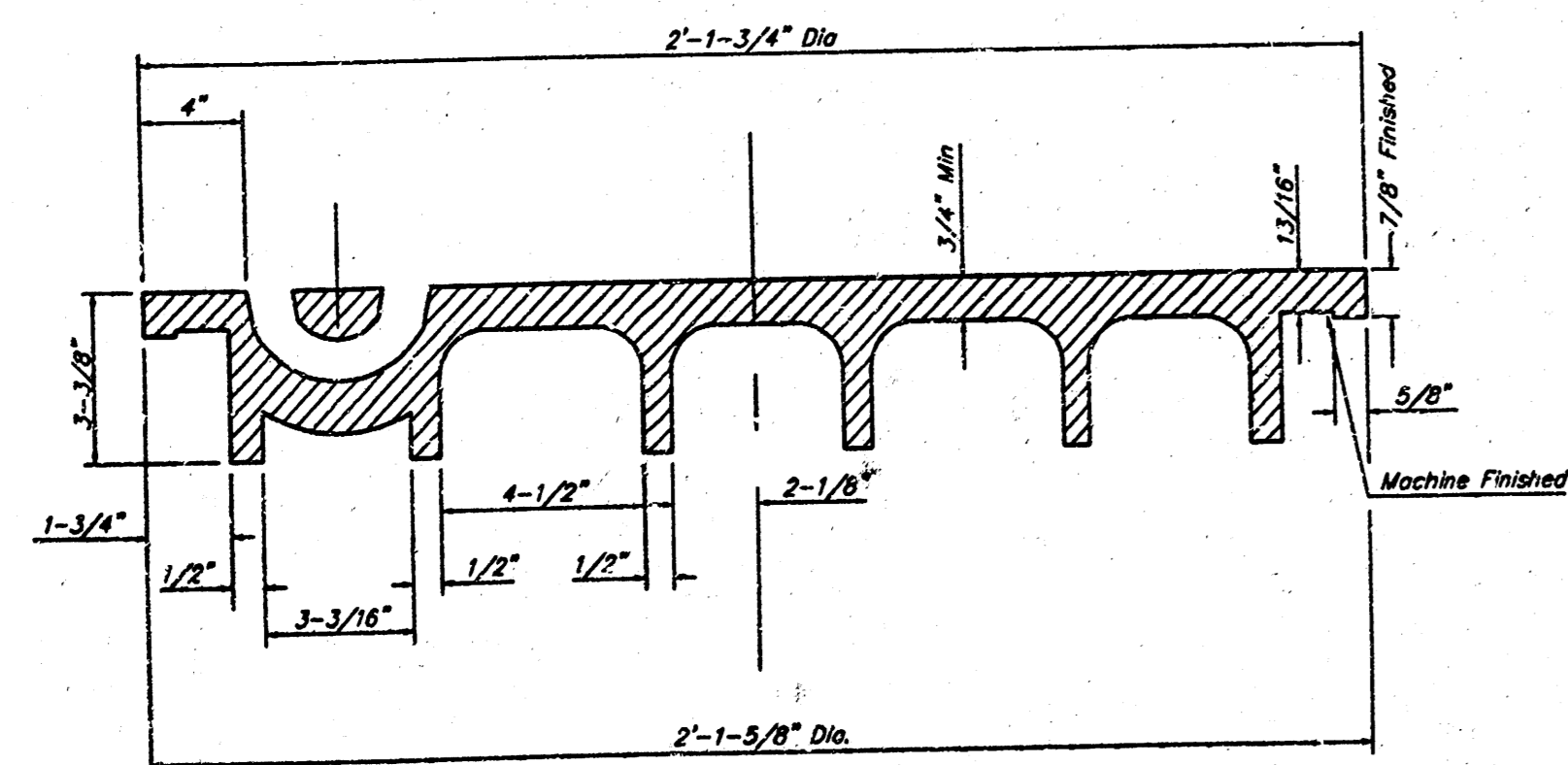
TOP VIEW



SECTION VIEW

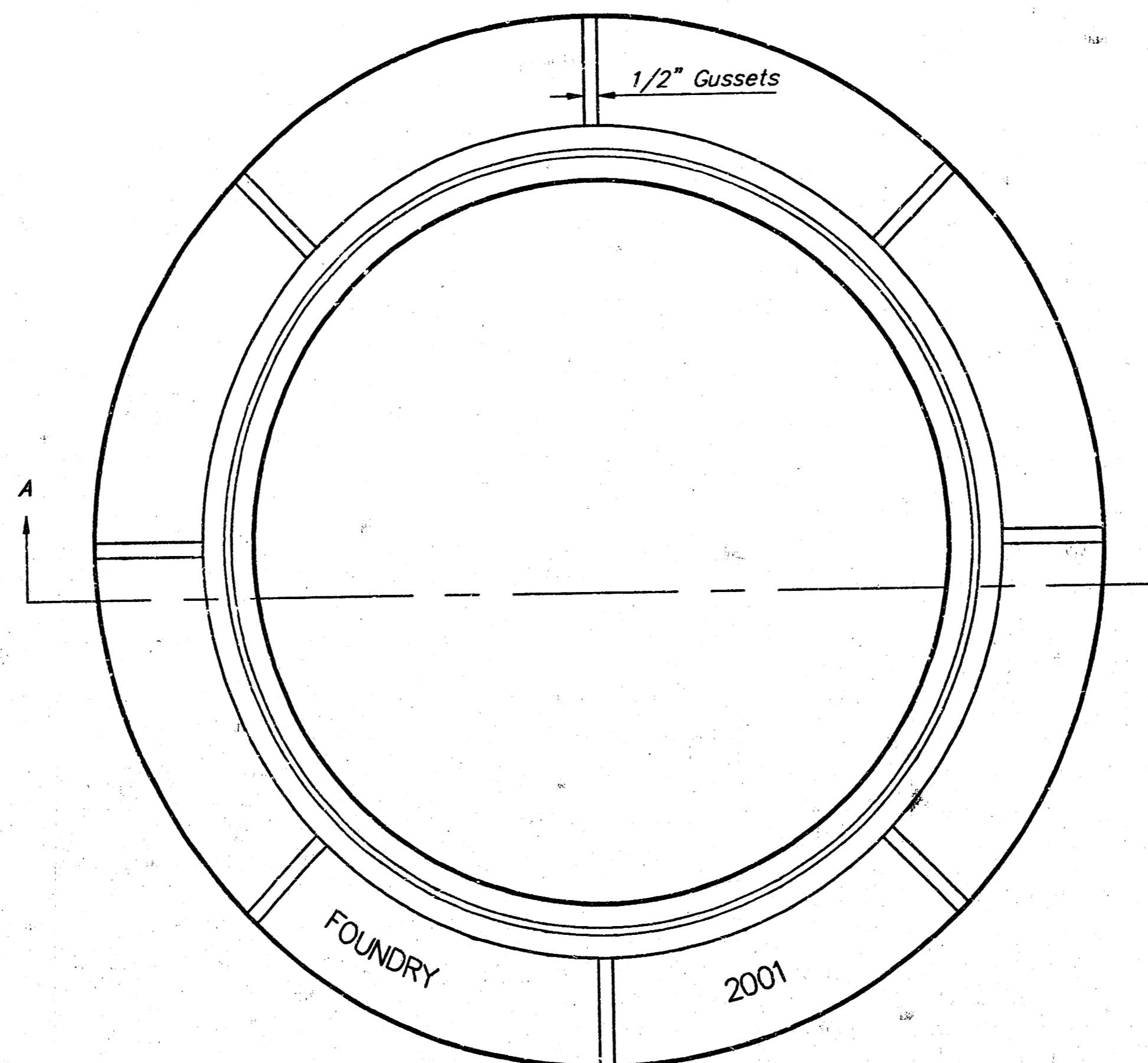


BOTTOM VIEW

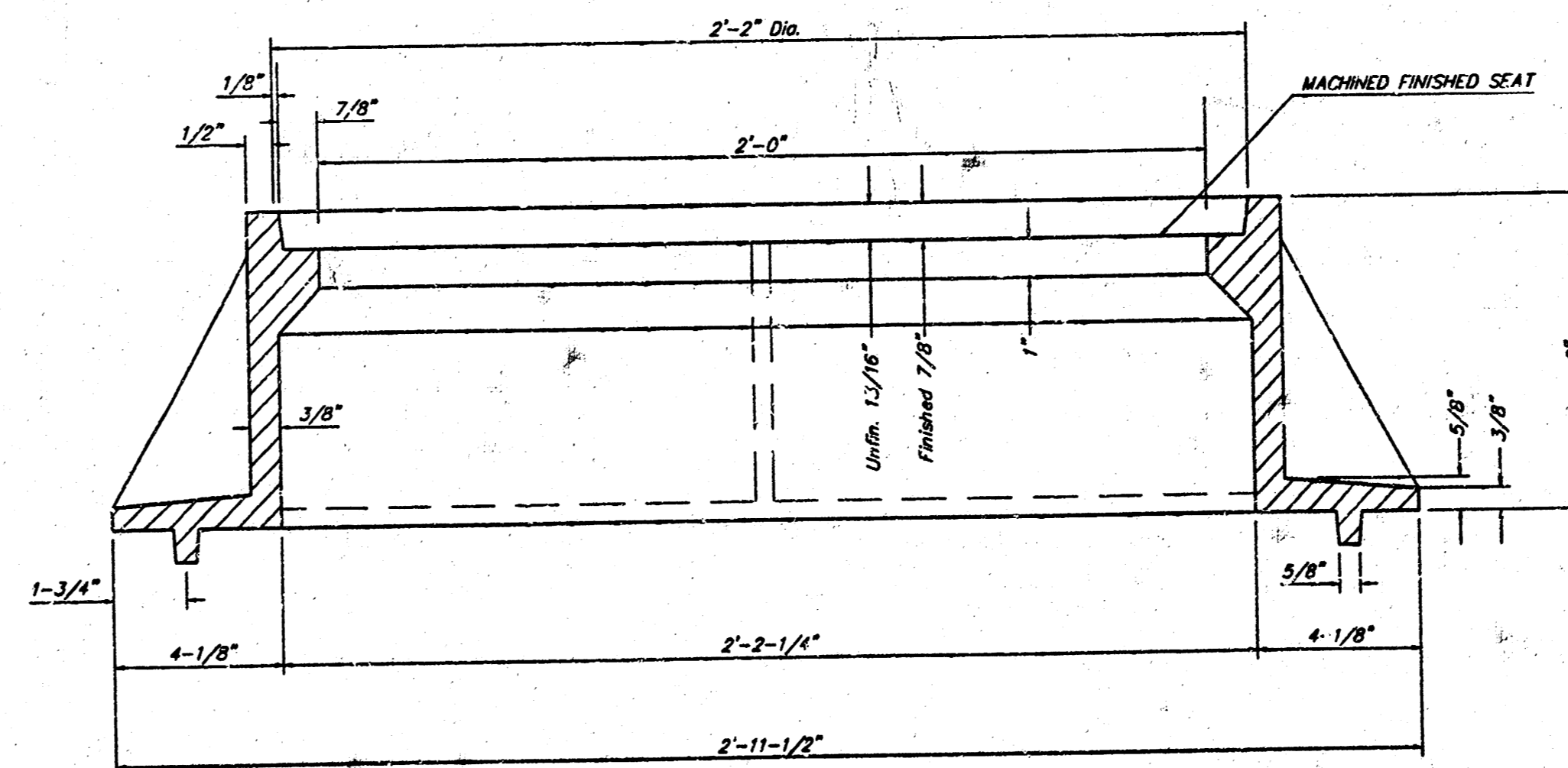


SECTION VIEW

MANHOLE FRAME  
Weight = 145 Lbs.



TOP VIEW



SECTION A-A

## GENERAL NOTES

MANHOLE CASTINGS SHALL BE MANUFACTURED USING GOOD QUALITY GRAY IRON CONFORMING TO CLASS 30 OF A.S.T.M. DESIGNATION A-48. DIMENSIONS AND WEIGHTS SHOWN ON THE DETAILED DRAWINGS SHALL BE CONSIDERED AS MINIMUM REQUIREMENTS AND ANY DEVIATIONS FROM THE DIMENSIONS SHOWN MUST BE SPECIFICALLY APPROVED. THE FINISHED CASTINGS SHALL BE OF UNIFORM QUALITY, FREE FROM BLOWHOLES, POROSITY, HARD SPOTS, SHRINKAGE DISTORTIONS OR OTHER DEFECTS.

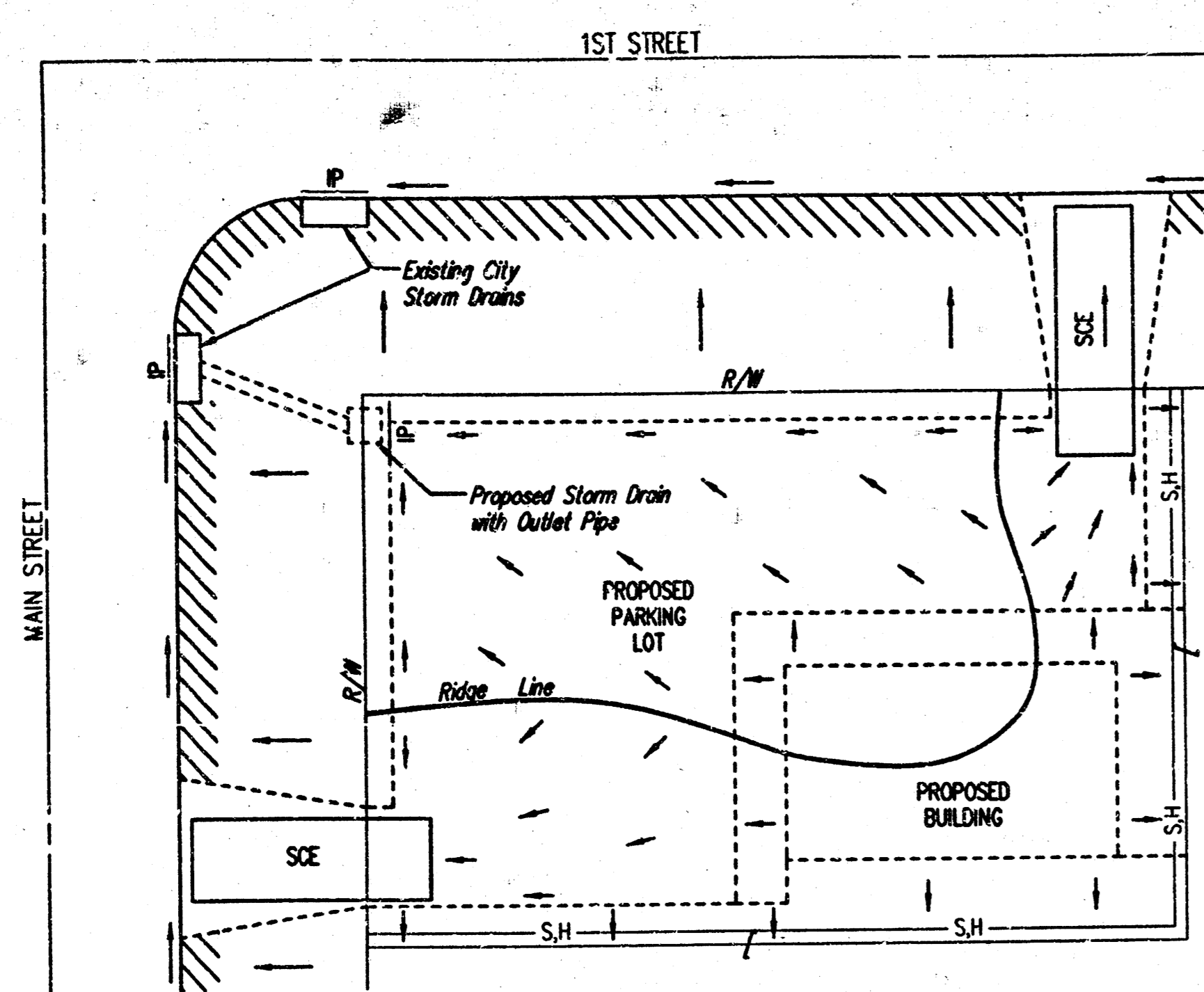
MANHOLE CASTINGS SHALL BE COATED WITH AN ASPHALT PAINT RESULTING IN A SMOOTH, TOUGH AND TENACIOUS COATING WHICH IS NOT BRITTLE OR TACKY.

MANHOLE CASTINGS SHALL BE MANUFACTURED SUCH THAT A COVER MANUFACTURED BY ANY ONE FOUNDRY WILL FIT INTERCHANGEABLY INTO A FRAME MANUFACTURED BY ANOTHER FOUNDRY AND STILL MEET ALLOWABLE CLEARANCES AND NON-ROCKING REQUIREMENTS. THIS WILL REQUIRE MANUFACTURING OF THE MATCHING FACES ON THE COVER AND THE FRAME TO CLOSE TOLERANCES.

THE OUTSIDE CIRCUMFERENCE OF THE VERTICAL FACE OF THE COVER AND THE INSIDE CIRCUMFERENCE OF THE VERTICAL FACE IN THE FRAME RECESS SHALL BE MANUFACTURED TO TOLERANCES SUCH THAT THE CLEARANCE BETWEEN THE COVER AND FRAME WILL NOT EXCEED 1/8" AT ANY POINT AROUND THE CIRCUMFERENCE OF THE COVER. THE SEATING SURFACES BETWEEN THE COVER AND FRAME SHALL BE MACHINED SUCH AS THESE SURFACES SHALL MAKE FULL CONTACT FOR THEIR FULL CIRCUMFERENCE TO PRECLUDE THE COVER FROM ROCKING IN THE FRAME.

THE MANHOLE FRAME AND COVER SHALL BE MARKED WITH LETTERING INDICATING THE NAME OF THE MANUFACTURER AND THE YEAR WHEN THE COVER OR FRAME WAS CAST. THE COVER SHALL BE FURTHER IDENTIFIED WITH REGARDS TO OWNERSHIP USING LETTERS AT LEAST 1 INCH IN HEIGHT. THIS IDENTIFICATION SHALL BE "CITY OF WICHITA SEWER DEPARTMENT". THE WORD DEPARTMENT MAY BE ABBREVIATED. THE TEXTURE OF THE TOP SURFACE OF THE COVER SHALL BE MANUFACTURED IN A CHECKERED PATTERN DESIGN AS INDICATED ON THE DRAWINGS. SMOOTH BLOCKOUTS SHALL BE UTILIZED TO HIGHLIGHT THE LETTERING ON THE COVER SURFACE. THE TOTAL AREA OF SMOOTH SURFACE BLOCKOUT SHALL NOT EXCEED THE AREA AS INDICATED ON THE DRAWING. POSITIONING OF SMOOTH BLOCKOUTS AND LETTERING MAY VARY FROM THAT SHOWN ON THE DETAILED DRAWING.

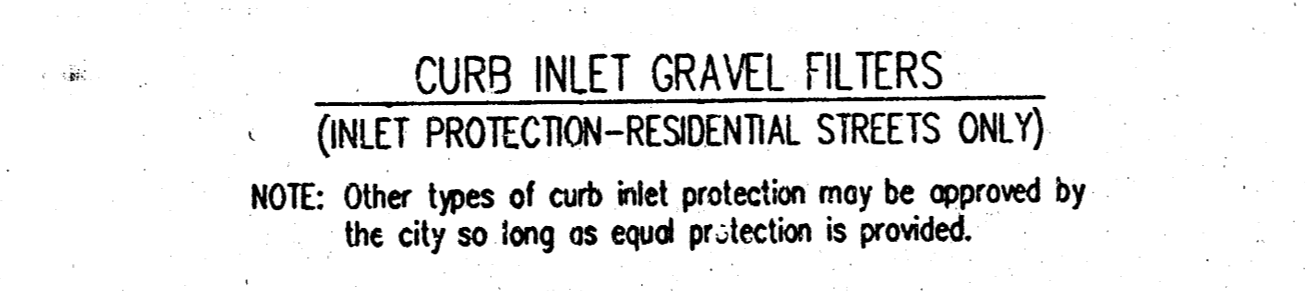
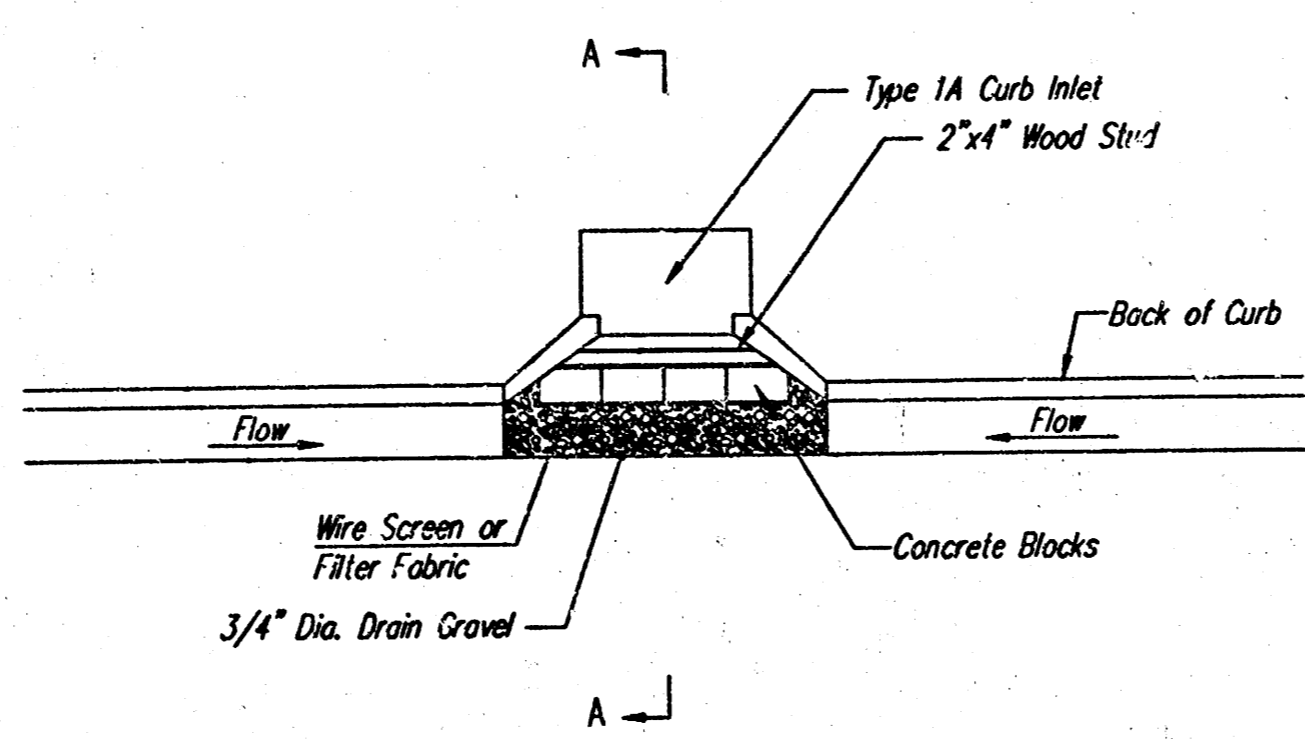
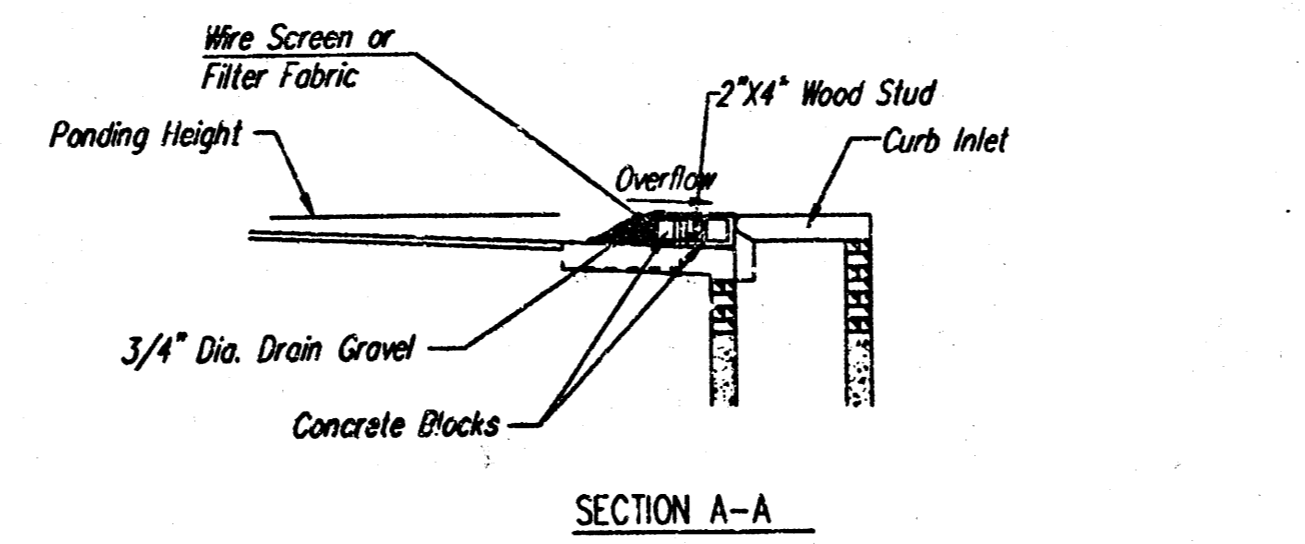
MANHOLE FRAME AND COVER DETAIL					
ADOPTED AS STANDARD DESIGN BY CITY OF WICHITA, KANSAS					
<b>BAUGHMAN COMPANY P.A.</b> ENGINEERING, SURVEYING, & PLANNING 318-262-7271 • 315 ELLIS • WICHITA, KANSAS 67211					
PROJECT NUMBER <b>1088 FPS (807861)</b>					SHEET <b>4</b>
DESIGN STAFF	DRAWN STAFF	APPROVED	DATE 08/01	SCALE NONE	OF <b>8</b>



- LEGEND**
- Flow Direction
  - IP Inlet Protection -- to be provided at all inlets subject to silt laden runoff.
  - SH- Silt Fence or Hay Bale Barrier -- to be installed along property lines where runoff from construction site can run onto other properties.
  - SCE Stabilized Construction Entrance -- to be used at all locations where vehicles or equipment enter or exit property.
  - Back of Curb Protection -- to be installed whenever curb is backfilled to less than 3 inches from top and disturbed earth exists adjacent thereto. (See City Standard Details.)

**General Notes**

1. This standard detail sheet is a part of your building permit. The BMP's shown on this sheet are considered minimum standards. Whenever sediment enters the streets, storm sewers, ditches, or ponds, contractor will install additional BMP's, as needed, to correct the problem.
2. Follow these general principals on all commercial building sides.
3. The soil erosion BMP's shown hereon must be in place at all times during construction until such time as the site is re-established with paving or grass.
4. Failure to install, protect, and maintain BMP's are violations of Section 16.32 of the City Code and will subject the contractor to the penalties provided therein. Included with your permit is an orange "notice" sign that must be posted on-site in a conspicuous place at all times during construction. This sign is provided to assist you in the maintenance of BMP's.
5. Back of Curb Protection: Can include hay bale, silt fence, or Curfew barrier, as shown on City BMP standard details. This BMP must remain in place until the area between the curb and right-of-way line has been permanently stabilized.
6. The General Contractor is responsible for the installation and maintenance of all BMP's.
7. Should the site abut a lake, BMP's will be installed to prevent sediment from entering the lake.
8. Any mud inadvertently tracked onto any street will be cleaned up by the general contractor at the end of each day's work.



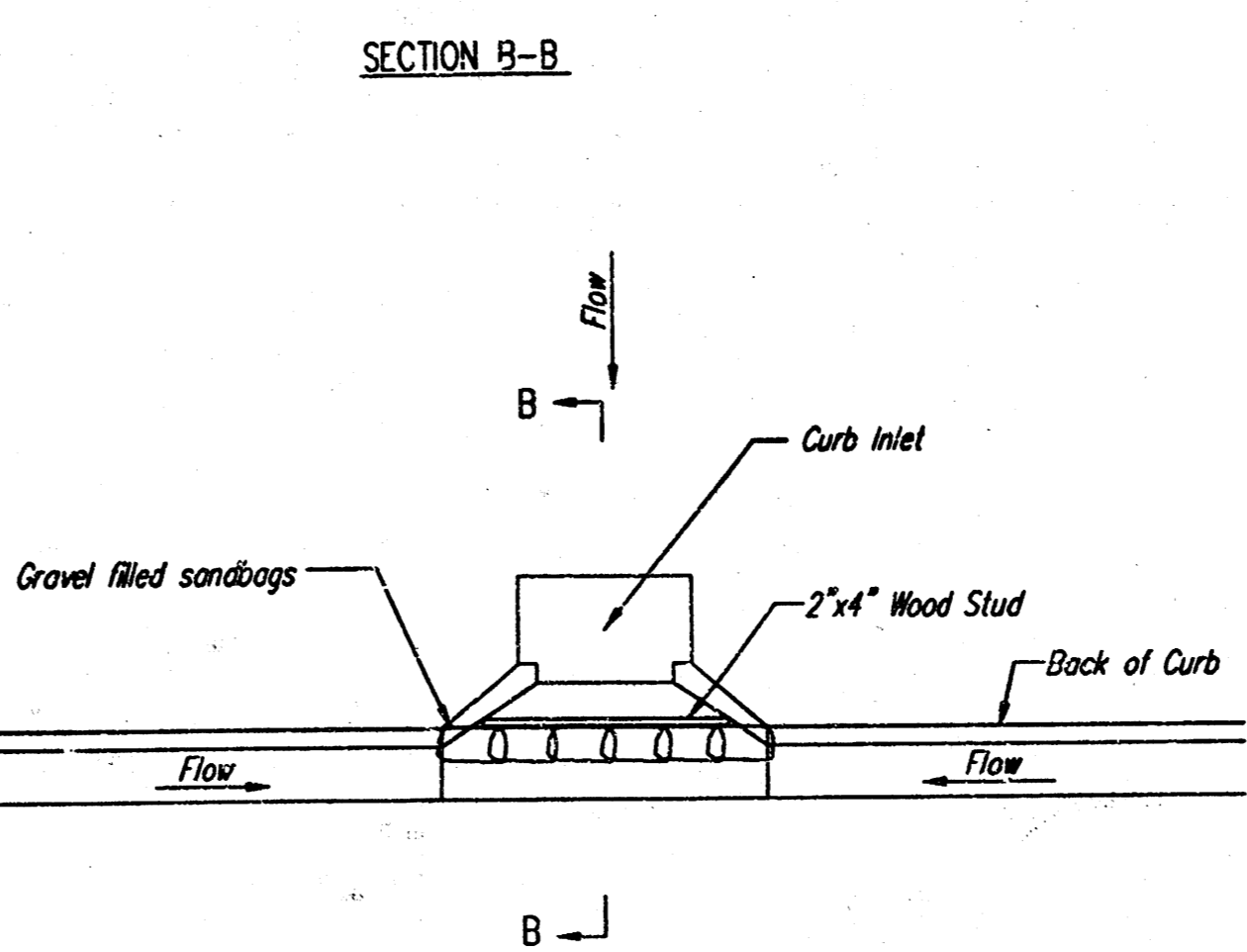
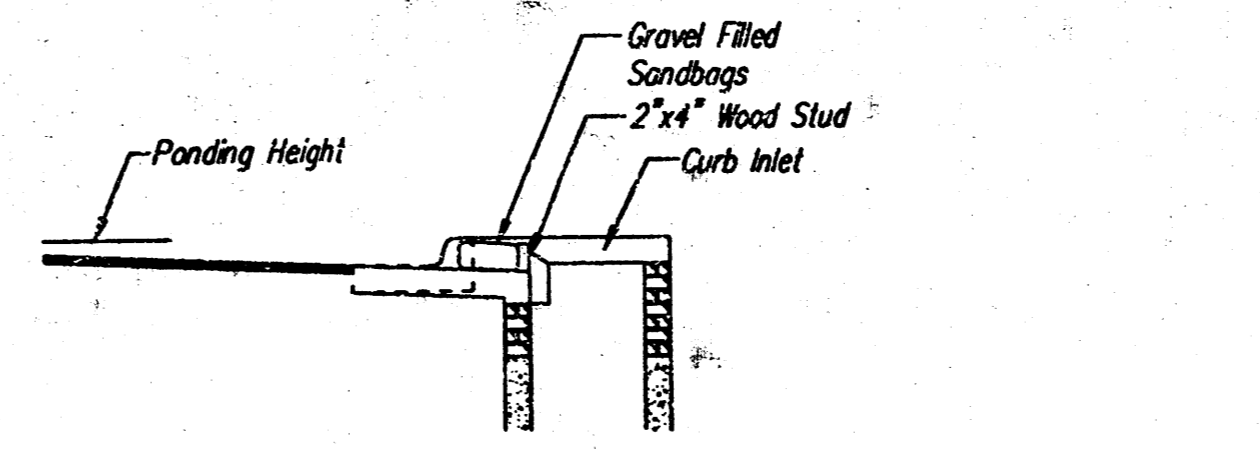
**CURB INLET GRAVEL FILTERS**  
(INLET PROTECTION-RESIDENTIAL STREETS ONLY)  
NOTE: Other types of curb inlet protection may be approved by the city so long as equal protection is provided.

A gravel inlet filter shall be installed at sump locations on residential streets. This type of protection is not to be used on arterial or collector streets of any time that it would pose an undue traffic hazard.

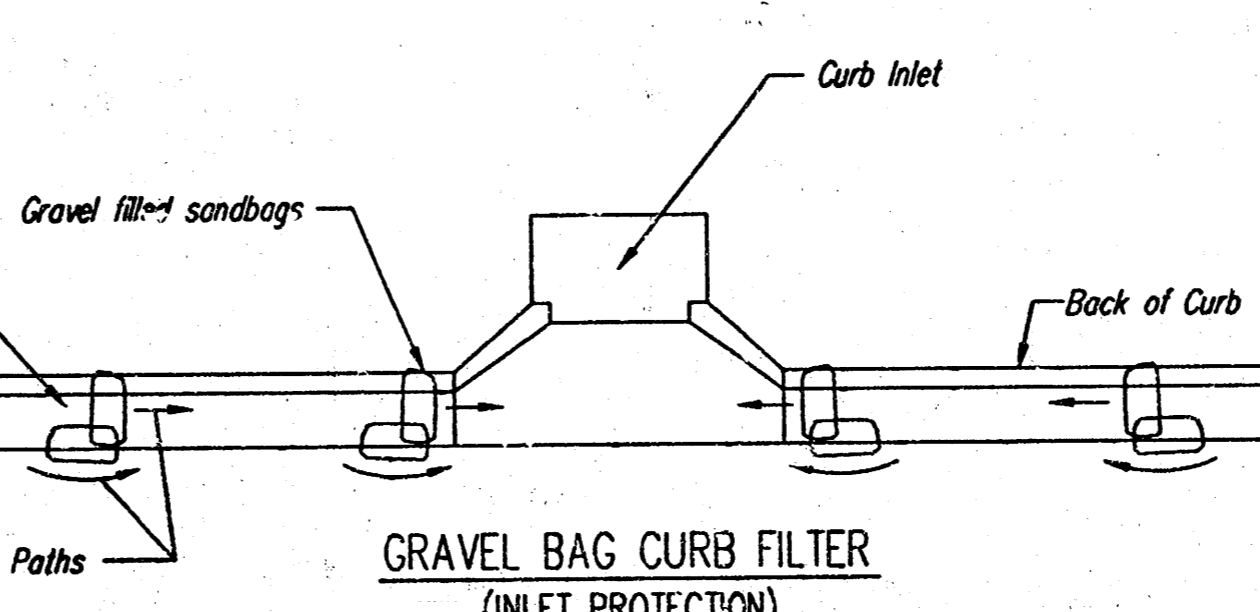
- Instructions for Installing:**
- STEP 1: Place concrete blocks around the inlet as shown on drawing. Insert 2x4 board as shown.
  - STEP 2: Wrap 1/2" mesh wire screen around the concrete blocks.
  - STEP 3: Place 1" to 1-1/2" diameter rock around the blocks and wire screen. Be sure the rock extends down from the top of the concrete block.
  - STEP 4: To prevent damage to vehicles, signs warning drivers about the structures may be necessary. An alternative installation is the use of gravel bags supported by a 2"x4" board to prevent collapsing.

Use of rock with diameters smaller than 1" in the bag may result in clogging of pores and reduce the amount of water flowing into an inlet.

**Maintenance:**  
All curb inlet gravel filters shall be inspected and repaired after each runoff event. Sediment deposits are to be removed once material is within 8 cm (3 inches) of the top of any block. Periodically, the gravel shall be raked to increase infiltration and filtering of runoff waters. Accumulated sediment is to be removed immediately from roads and streets.



**CURB INLET SANDBAG FILTERS**  
(INLET PROTECTION)  
NOTE: Other types of curb inlet protection may be approved by the city so long as equal protection is provided.



**GRAVEL BAG CURB FILTER**  
(INLET PROTECTION)  
NOTE: Place two or more sets of bags in a manner that results in maximum support. The flow line bag must be lower than top of curb.

**CURB SEDIMENT TRAPS**

When inlets are located on streets having a grade (i.e., sump conditions do not exist), installing gravel (or sand) bags in the gutter flow line to create small sediment traps can be considered. Gravel bags are recommended over sand bags to allow for drainage.

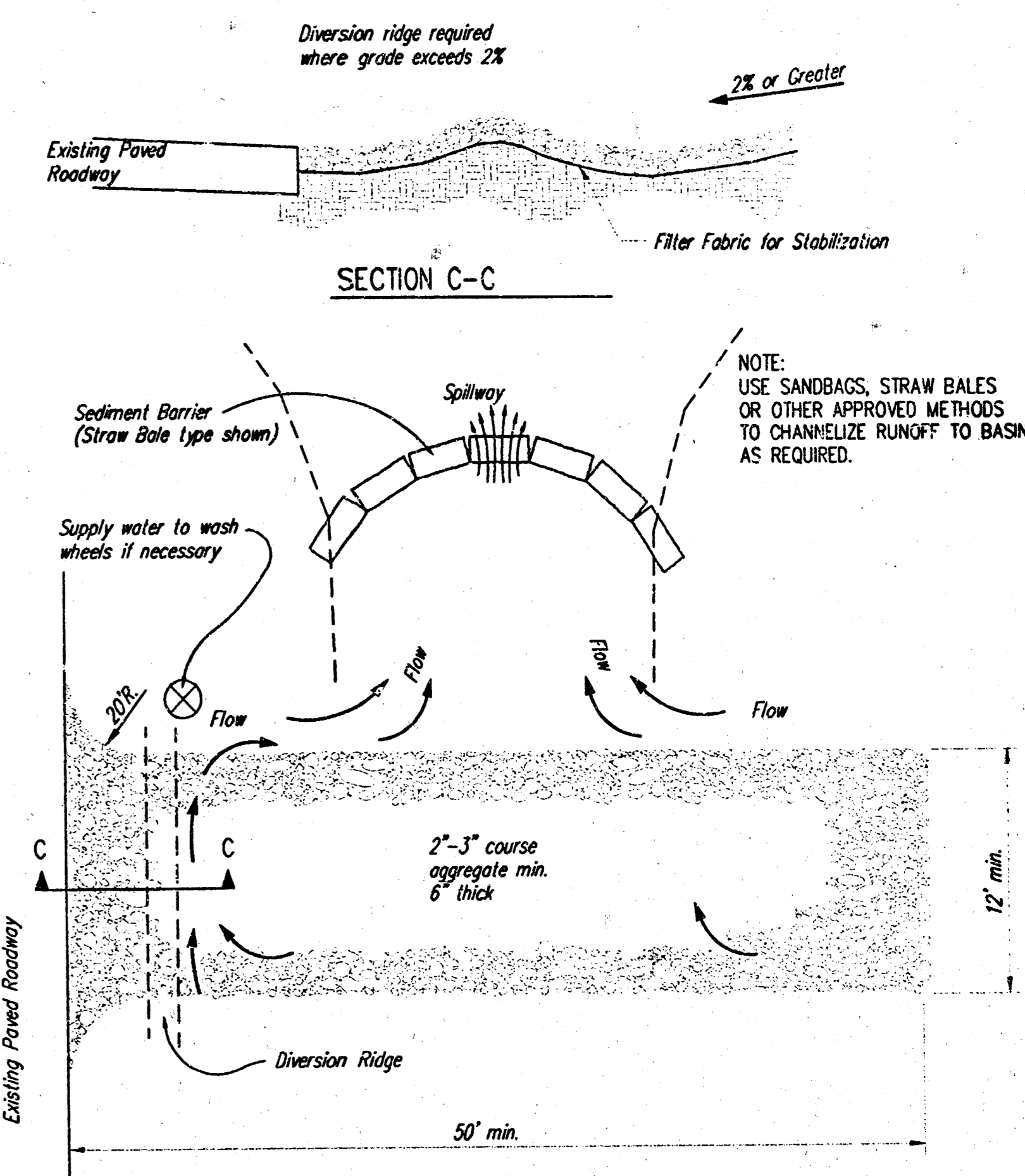
If the spacing between bags becomes too large, little sediment may be trapped. Spacing of bags should be completed using the table or graph that illustrates placement distances based upon street slope. When installed in the gutter, bag tops must be lower than the sidewalk.

**Spacing:**

Gravel bags are to be placed according to street grades using the following table or graph that appears below.

GRADE (%)	SPACING (FEET)
0.5	75
1.0	45
2.0	18
3.0	12
4.0	9
5.0	6

**Maintenance:**  
Collected sediment shall be removed after every runoff event. Bags that are destroyed by vehicular traffic or through natural deterioration are to be immediately replaced.



**STABILIZED CONSTRUCTION ENTRANCE**

- NOTES:**
1. THE ENTRANCE SHALL BE MAINTAINED IN A CONDITION THAT WILL PREVENT TRACKING OR FLOWING OF SEDIMENT ONTO PUBLIC RIGHTS-OF-WAY. THIS MAY REQUIRE TOP DRESSING, REPAIR AND/OR CLEANOUT OF ANY MEASURES USED TO TRAP SEDIMENT.
  2. WHEN NECESSARY, WHEELS SHALL BE CLEANED PRIOR TO ENTRANCE ONTO PUBLIC RIGHT-OF-WAY.
  3. WHEN WASHING IS REQUIRED, IT SHALL BE DONE ON AN AREA STABILIZED WITH CRUSHED STONE THAT DRAINS INTO AN APPROVED SEDIMENT TRAP OR SEDIMENT BASIN, AS SHOWN ABOVE.
  4. DRIVE ENTRANCES ONTO RESIDENTIAL LOTS WILL NOT BE REQUIRED TO HAVE THE SEDIMENT BARRIER SHOWN, BUT WHEEL WASHING MAY BE REQUIRED IF STABILIZED ENTRANCE IS NOT SUFFICIENT TO KEEP MUD FROM BEING TRACKED ONTO ADJACENT STREET. ENTRANCE SHALL EXTEND FROM BACK OF CURB TO DWELLING.

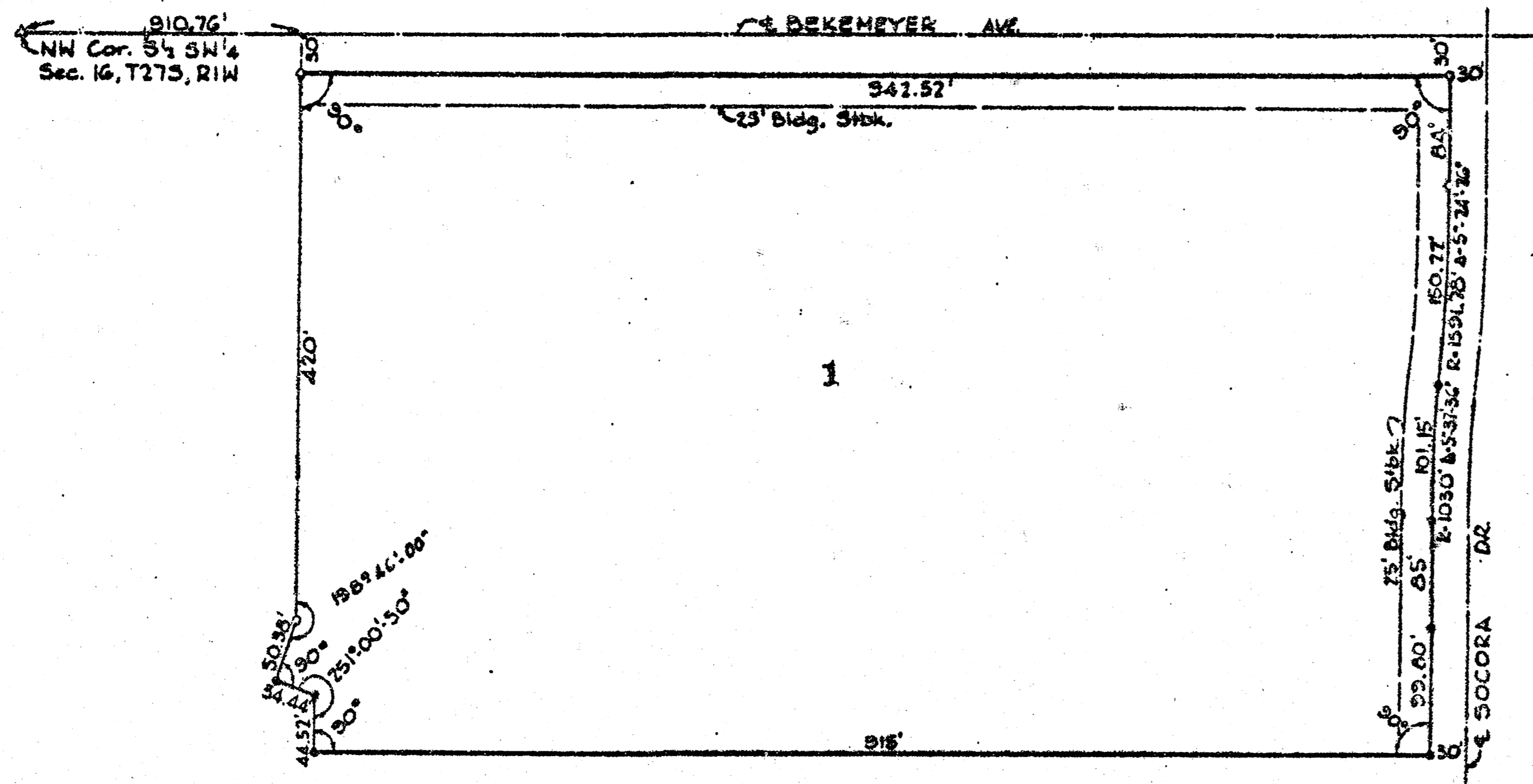
**SOIL EROSION  
BMP DETAILS**

CHRISTOPHER M. CARRIER, P.E.  
STORM WATER ENGINEER

PROJECT NUMBER 1086 PPS (607861)	CCA NO. NA
DATE 09-01	SHEET 5 OF 6

# ST. FRANCIS of ASSISI PARK II

## WICHITA, SEDGWICK COUNTY, KANSAS



State of Kansas ) s.s. I, Wilmer Freund, a Licensed Professional Engineer in the aforesaid County of Sedgwick ) s.s. do hereby certify that I have surveyed and platted ST. FRANCIS OF ASSISI PARK II, Wichita, Sedgwick County, Kansas, into a lot, and that the accompanying plat is a true and correct exhibit of the property surveyed, described as and being a replat of all of Lot 1, St. Francis of Assisi Park, Wichita, Sedgwick County, Kansas; and a tract described as all that part of the SW<sup>1/4</sup> of Sec. 16, T27S, R-1-W of the 6th P.M., Sedgwick County, Kansas, and part of Block 2, Tyler Acres First Addition, Sedgwick County, Kansas, described as follows: Beginning at the S.W. Corner of St. Francis of Assisi Park, Wichita, Sedgwick County, Kansas; thence easterly, along the south line and the south line extended of said St. Francis of Assisi Park, 931.18 feet; thence southerly, with a deflection angle to the right of 89°46'50", 99.80 feet; thence westerly, parallel with the south line of said SW<sup>1/4</sup>, 915 feet; thence northerly, with a deflection angle to the right of 90°, 44.92 feet; thence northeasterly, with a deflection angle to the left of 71°00'50", 34.64 feet to the S.E. Corner of Ascension Lutheran Church Addition, Wichita, Kansas; thence northeasterly, with a deflection angle to the right of 90°, along the easterly line of said Ascension Lutheran Church Addition, 50.38 feet to the place of beginning. Containing 94,262.29 S. F. more or less; and vacated Socora described as commencing at the S.E. Corner of the SW<sup>1/4</sup> of Sec. 16, Twp. 27-S, R-1-W of the 6th P.M., Sedgwick County, Kansas; thence westerly, along the south line of said SW<sup>1/4</sup>, 761.59 feet; thence northerly, with a deflection angle to the right of 90°, 780 feet to the point of beginning; thence northerly, along a line at right angles to the south line of said SW<sup>1/4</sup>, 174.26 feet to the P.C. of a curve to the right with a radius of 1030 feet and a central angle of 5°51'29"; thence northeasterly, along said curve, 105.31 feet to a point on the west line of Socora as platted in St. Francis of Assisi Park; thence southeasterly, along said west line and the west line extended with a radius of 1591.73 feet and a central angle of 10°15'28", 284.98 feet; thence easterly, parallel with the south line of said SW<sup>1/4</sup>, 48.86 feet to the point of beginning.

July 29, 1983

*Wilmer Freund*  
 Wilmer Freund, P.E.

Know all men by these presents that we, the undersigned, owners of the land described in the Engineer's Certificate, have caused the same to be surveyed and platted into a lot, the same to be known as ST. FRANCIS OF ASSISI PARK II, Wichita, Sedgwick County, Kansas. The 10-foot utility easement on the south 10 feet of St. Francis of Assisi Park, and that part of Socora Avenue as described in the Engineer's Certificate are hereby vacated by virtue of K.S.A. 12-512(b).

Attest:  
*Charles F. Walsh*  
 Very Rev. Charles F. Walsh, Vicar General

CATHOLIC DIOCESE OF WICHITA  
*Eugene J. Gerber*  
 Eugene J. Gerber, President  
 ST. FRANCIS OF ASSISI CHURCH  
*Rev. Thomas McGread*  
 Reverend Thomas McGread, Pastor



State of Kansas ) s.s. The foregoing instrument was acknowledged before me this 27th day of July, 1983, by Eugene J. Gerber, President, Catholic Diocese of Wichita, a non-profit corporation, on behalf of the corporation, and by Reverend Thomas McGread, Pastor, St. Francis of Assisi Church, on behalf of the Church.

My Appointment Expires: June 5, 1984

*Arlene R. Garton*  
 Arlene R. Garton, Notary Public

This plat has been submitted to and approved by the Wichita-Sedgwick County Metropolitan Area Planning Commission, Wichita, Kansas, this 26th day of July, 1983.

*Robert A. Lakin*  
 Robert A. Lakin, Secretary  
  
*David Bayouth*  
 David Bayouth, Chairman

This plat approved and any dedications shown hereon accepted by the Board of Commissioners of the City of Wichita, Kansas, this 27th day of July, 1983.

*Donald C. Gistick*  
 Donald C. Gistick, City Clerk  
  
*Margalee Wright*  
 Margalee Wright, Mayor

This plat approved and any dedications shown hereon accepted by the Board of County Commissioners of Sedgwick County, Kansas, this \_\_\_\_\_ day of \_\_\_\_\_, 1983.

*Jack Spratt*  
 Jack Spratt, Chairman  
  
*Donald E. Gragg*  
 Donald E. Gragg, Commissioner  
*Tom Scott*  
 Tom Scott, Commissioner

Attest:  
*Dorothy K. White*  
 Dorothy K. White, County Clerk

Entered on transfer record this \_\_\_\_\_ day of \_\_\_\_\_, 19\_\_\_\_.

*Dorothy K. White*  
 Dorothy K. White, County Clerk

State of Kansas ) s.s. This is to certify that this instrument was filed for record in the Register of Deeds Office, at 10:00 o'clock A.M., on the 29th day of SEPTEMBER, 1983.

*Bette F. McCart*  
 Bette F. McCart, Register of Deeds

B/F 9106-302 7-29-83

#654752

2000

1000 2901  
 H-7-6-9 INTER-9-8-32 - 1118 2-A