

SANITARY SEWER IMPROVEMENTS TO SERVE LOT 8, BLOCK A SANTA FE ORIENT INDUSTRIAL DISTRICT 3RD ADDITION TO WICHITA, SEDGWICK COUNTY, KANSAS

PROJECT NUMBER
1237 PPS (607861)

Michael E. Lindebak, P.E., City Engineer

GENERAL NOTES

- Contractor will be required to provide notice to utility companies a minimum of twenty-four (24) hours prior to any excavation, as follows:

Kansas One-Call	687-2470
-----------------	----------

The Contractor must notify the following in case of an emergency:

Cablevision	262-4270
or	263-2061
K.P.L. Gas Service Company	383-8650
Kansas Gas & Electric Company	383-8600
Arkla Gas Company	942-8330
Southwestern Bell Telephone Company	1-571-2611
City of Wichita Water Department	268-4908
City of Wichita Sewer Department	268-4071
- Exist. utilities and their locations, as shown on the plans, represent the best information obtainable for design. Location information has been obtained from the various utility companies and is either from company record drawings or company-provided field locations. The Contractor will be required to work around existing utilities which do not conflict with proposed construction.
- The Contractor to verify utility locations prior to construction of this project.
- Utility service and installation shall be coordinated with the respective utility owners. Contacts are:

K&E Gas	Steve Orth	261-6607
K.G. & E.	Chris Capps	261-6434
Wichita Water	Chuck Steven	268-4555
	Joe Botinelly	258-4908
Southwestern Bell	Jim Tabin	258-2759
- All areas disturbed by construction operations shall be seeded with rye grass at a rate of 300 lbs/acre immediately following construction in that area. Ground shall be prepared per City of Wichita specifications prior to seeding.
- Traffic affected by the construction of this project shall be handled in accordance with the latest edition of the Manual on Uniform Traffic Control Devices.

AS-BUILT

Date: July 16th 2002
Signed: [Signature]

APPROVED AS NOTED BY CITY ENGINEER OF WICHITA

STORM SEWERS _____

SANITARY SEWERS VRH 5/20/02

Inspection and testing for this project are to be provided by a Licensed Consulting Engineering Firm under contract with the Owner/Developer. Said inspection is to be in accordance with the City of Wichita standard construction engineering practices and certified by a Licensed Professional Engineer. No work shall be performed in dedicated easements or public right-of-way by the Contractor without such inspection nor shall work be commenced without written authorization by the City Engineer. All construction and materials shall comply with the City of Wichita Specifications and Standards (on file and available in the City Engineer's Office).

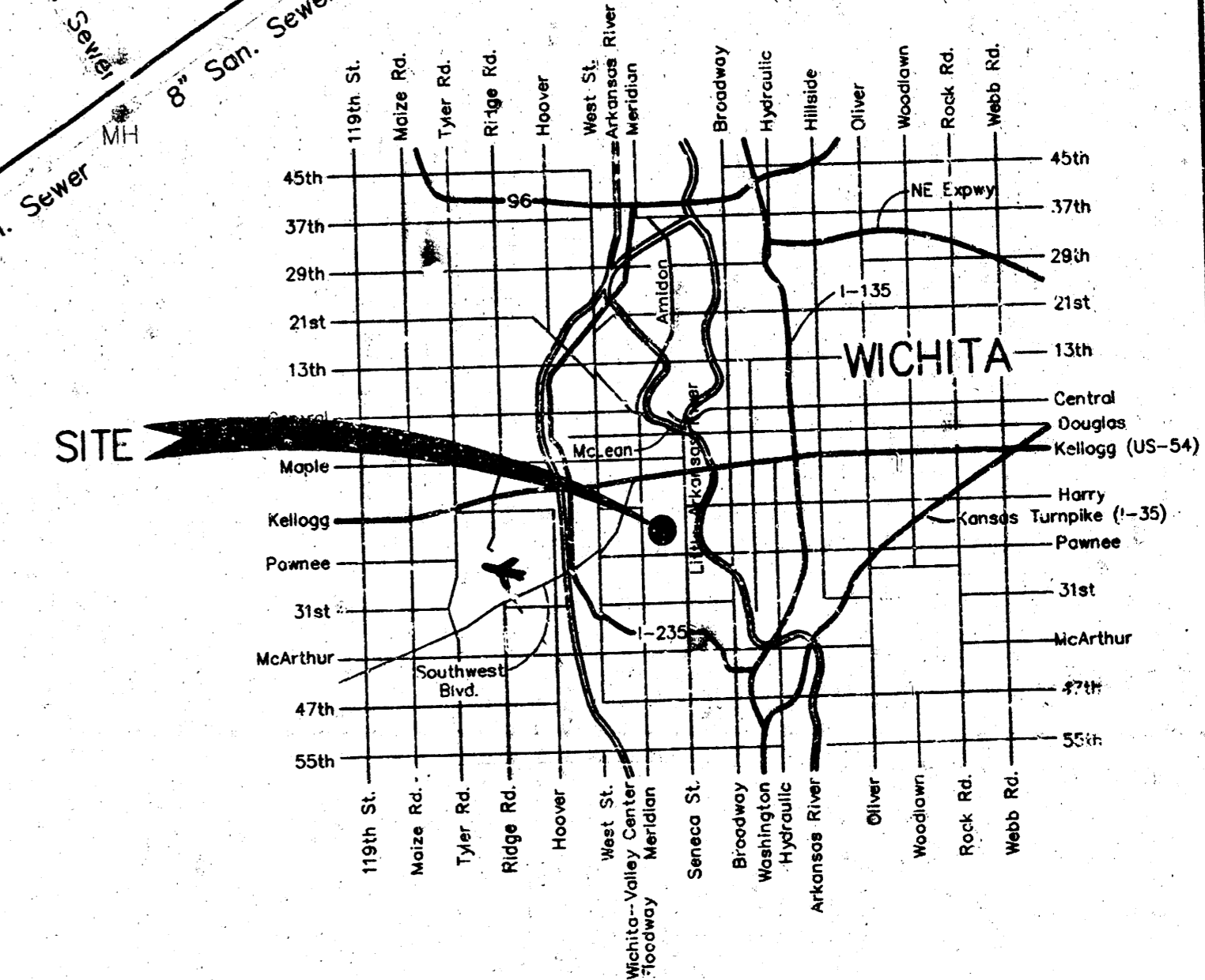
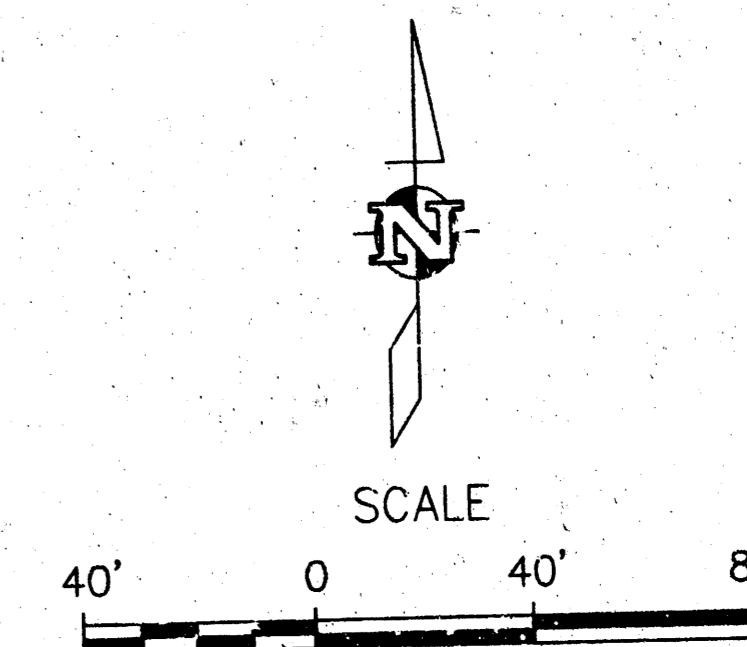
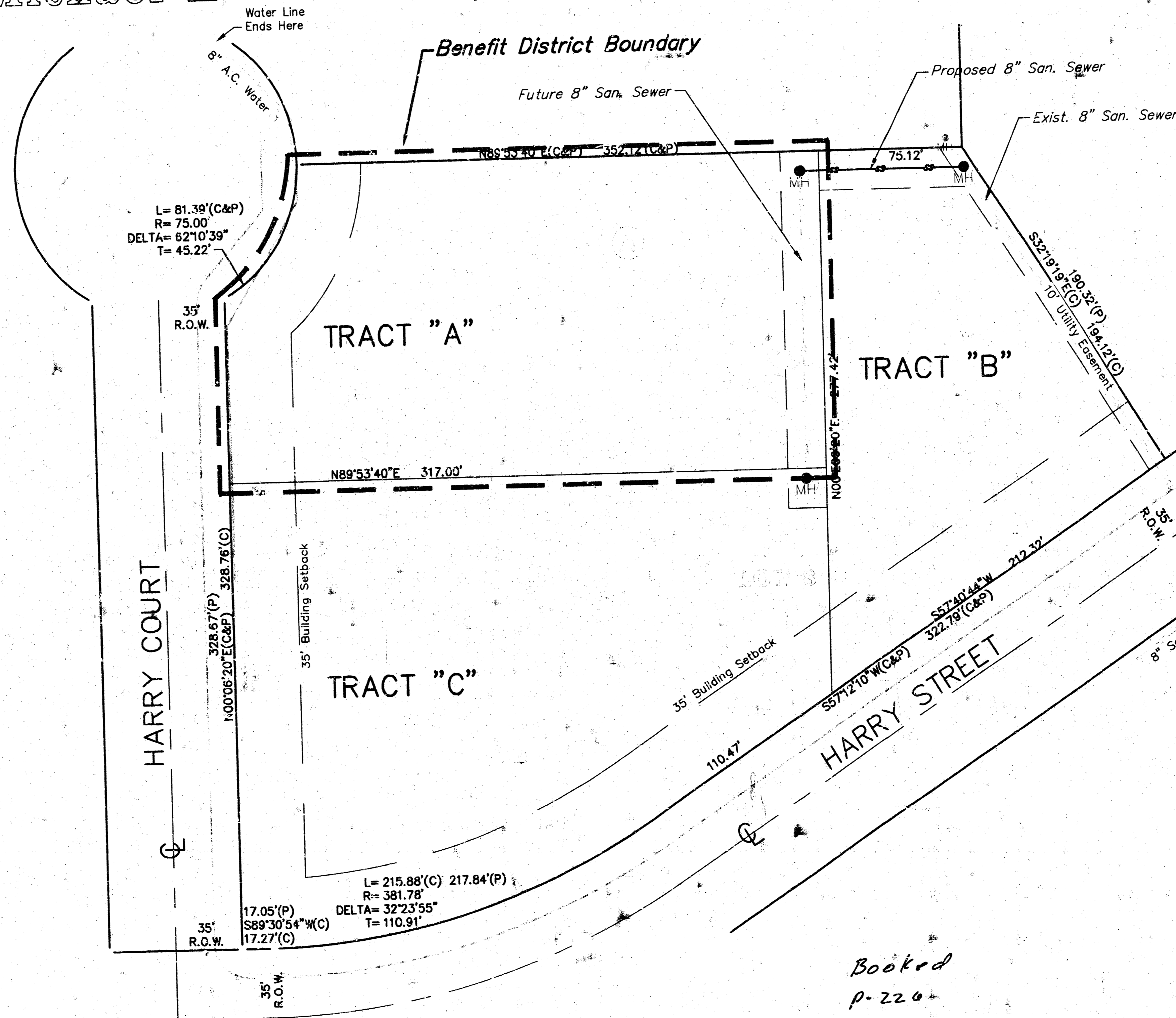
BENCHMARK

C.O.W. Bench - Harry & Meridian; 29.5' South and 61' East on Centerline
Elev.=1293.74

On-Site - R/R spike in South face of P.P.
@ S.W. Cor. Lot 8, Block A.
Elev.=1296.59

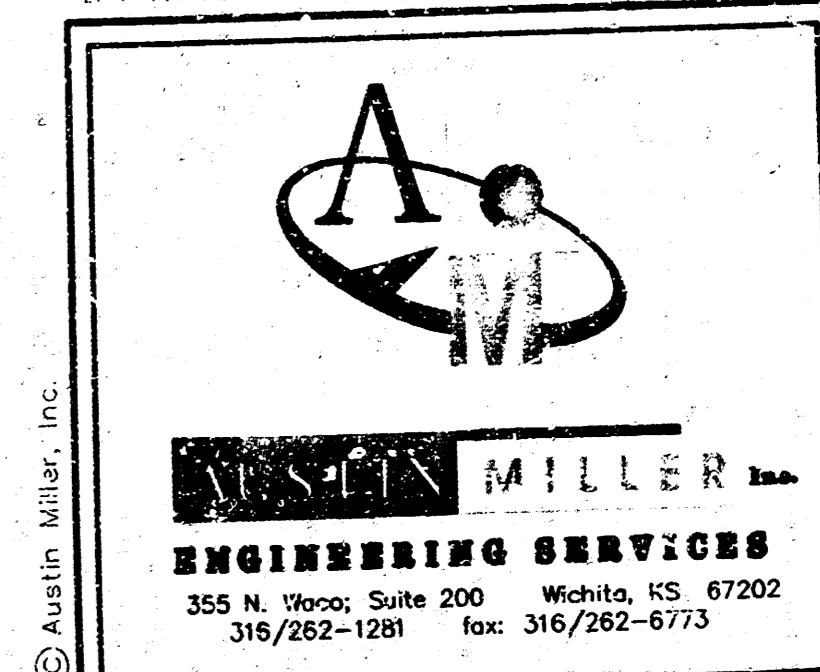
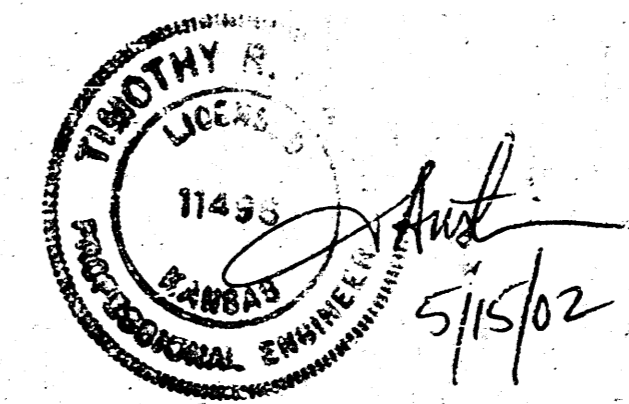
INDEX

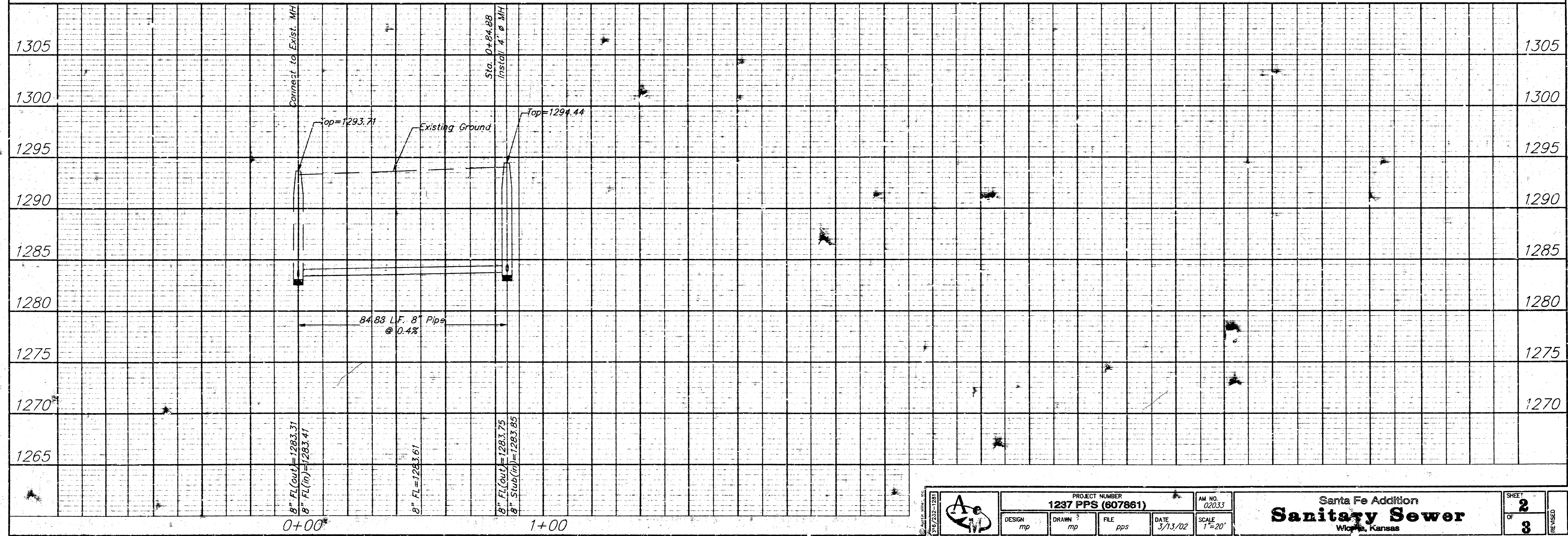
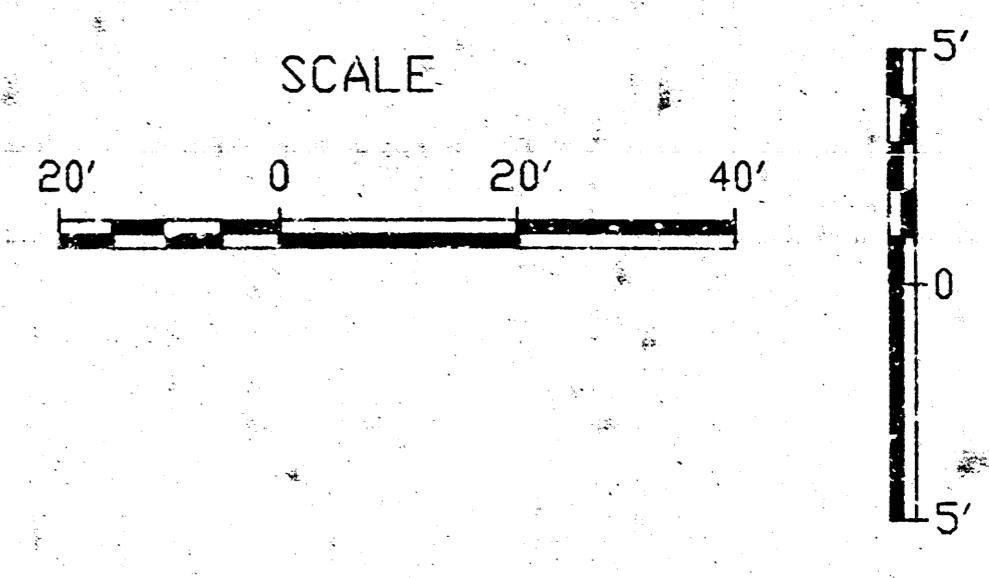
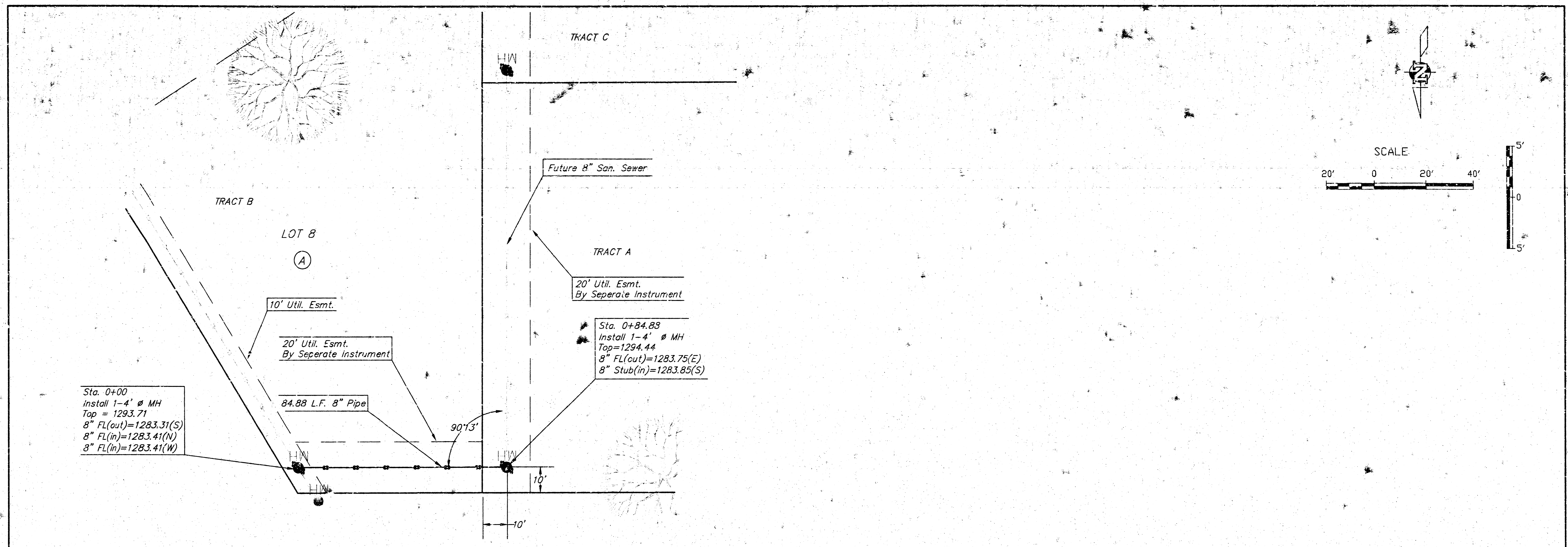
- Cover Sheet
- Plan Sheet
- Manhole Detail Sheet



LOCATION MAP

Booked
p-220
7-16-02
R.D.L.





PROJECT NUMBER 1237 PPS (607861)		AM NO. 020331	SHEET 2 OF 3	REVISION
DESIGN mp	DRAWN mp	FILE pps		

Santa Fe Addition
Sanitary Sewer
Wagon, Kansas

