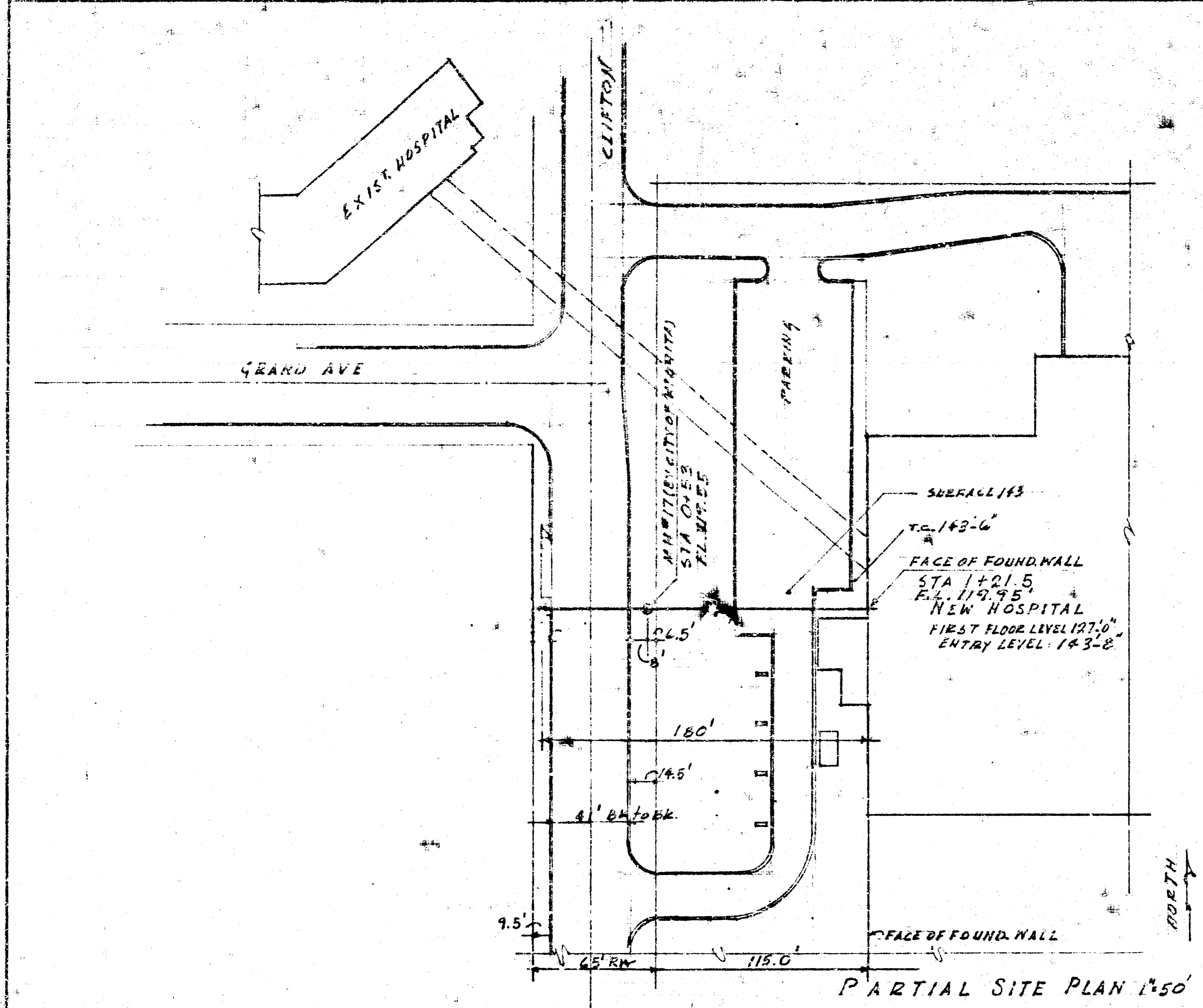


PLAN  
 DATE: 7-8-74  
 DRAWN BY: [illegible]  
 CHECKED BY: [illegible]

PROFILE  
 DATE: 7-8-74  
 DRAWN BY: [illegible]  
 CHECKED BY: [illegible]

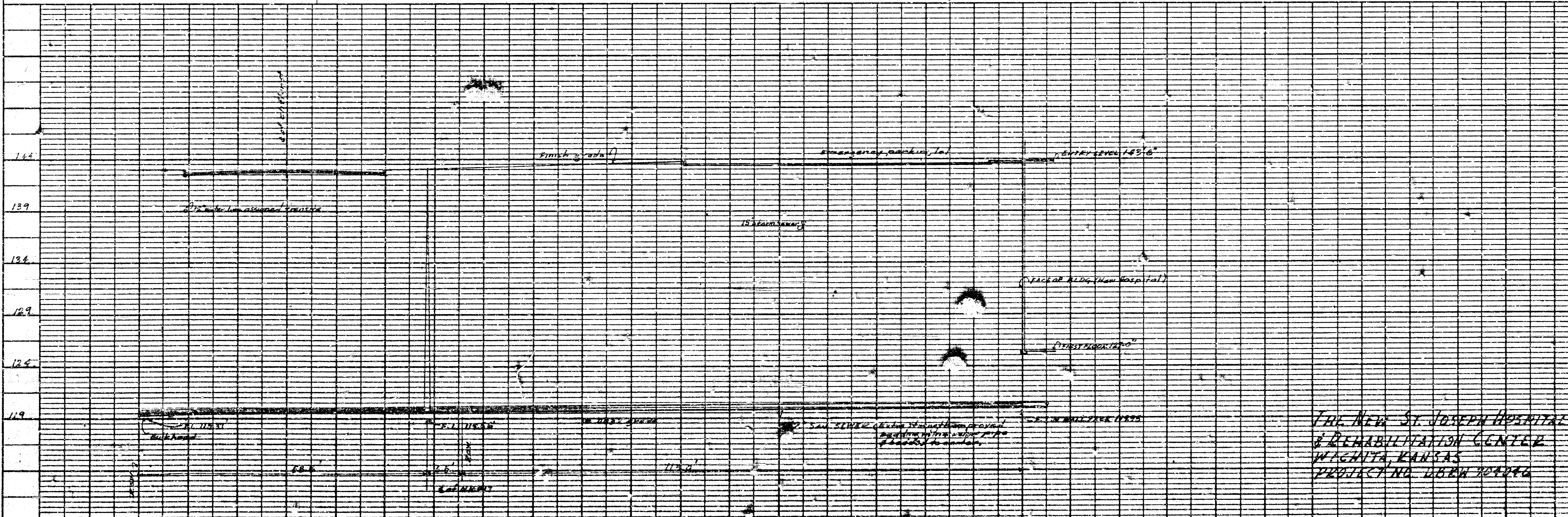


PARTIAL SITE PLAN 1/50

HORIZONTAL = 1" = 10', VERTICAL = 1" = 5'

**NOTE TO CONTRACTOR**  
 The project will be constructed under the supervision of the CITY ENGINEER and conforming to the SPECIFICATIONS of the CITY OF WICHITA. The CONTRACTOR will reimburse the City of Wichita for all cost of ~~inspection~~ inspection.

7-8-74  
 APPROVED AS NOTED  
 By CITY ENGINEER OF WICHITA  
 Sanitary Sewers D. E. S.  
 Storm Sewers \_\_\_\_\_  
 Driveway Approaches \_\_\_\_\_



THE NEW ST. JOSEPH HOSPITAL  
 & REHABILITATION CENTER  
 WICHITA, KANSAS  
 PROJECT NO. D88W 154266