

SANITARY SEWER PLANS SEDGWICK COUNTY ZOO PROJECT NO 468-76-245-80001-000-000-063

CITY OF WICHITA KANSAS
MICHAEL E. LINDEBAK, CITY ENGINEER
APRIL 1986

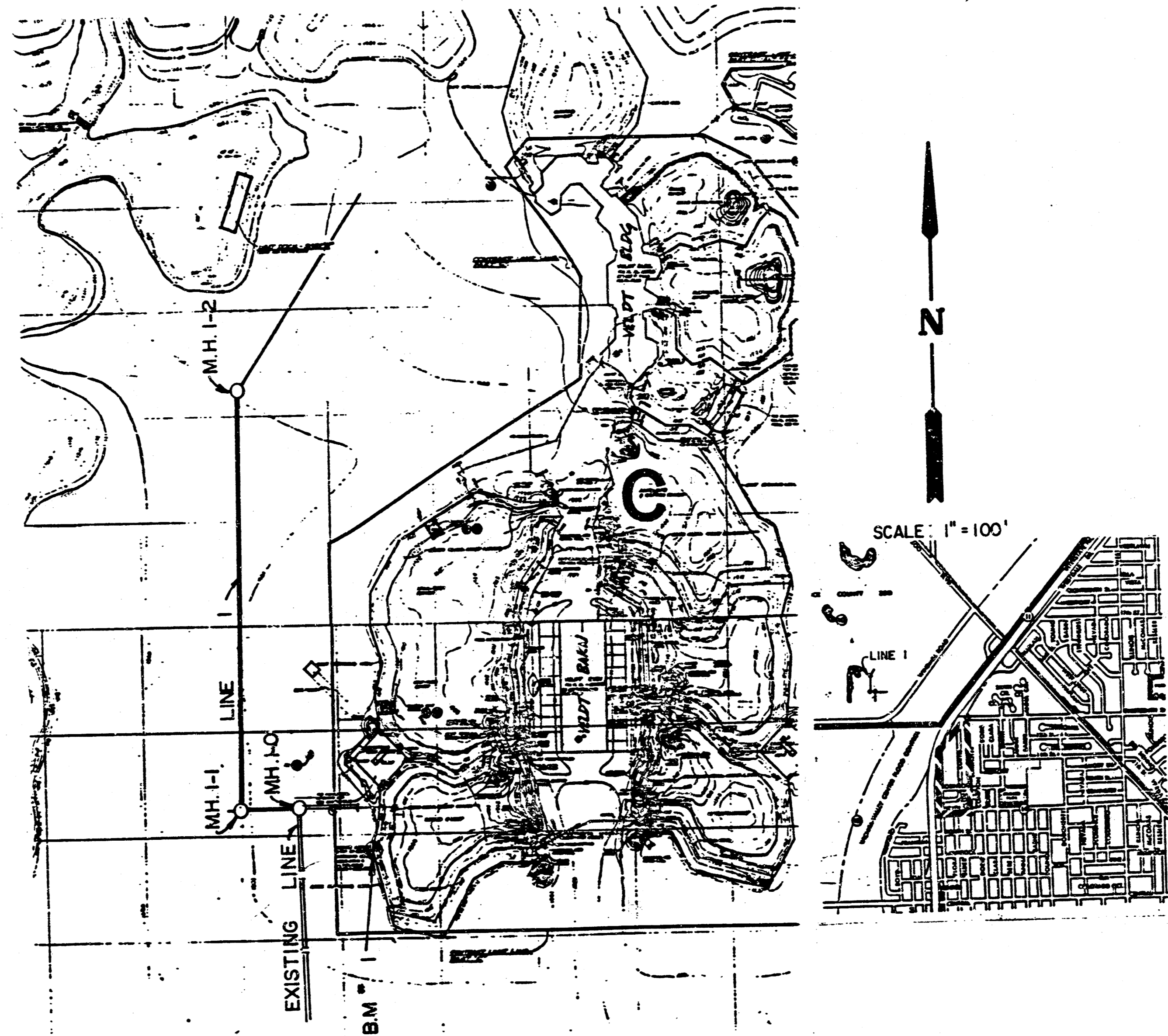
GENERAL NOTES

1. THE CONTRACTOR SHALL BE RESPONSIBLE FOR PRESERVING PROPERTY IRONS. THE CONTRACTOR SHALL BE REQUIRED TO RE-ESTABLISH ANY PROPERTY IRONS WHICH ARE DAMAGED OR DESTROYED BY HIS CONSTRUCTION OPERATIONS. SUCH IRONS SHALL BE RE-ESTABLISHED BY A LICENSED LAND SURVEYOR OR A LICENSED PROFESSIONAL ENGINEER IN ACCORDANCE WITH STATE LAWS.
2. EXISTING UTILITIES AND THEIR LOCATIONS, AS SHOWN ON THE PLANS, REPRESENT THE BEST INFORMATION OBTAINABLE FOR DESIGN. LOCATION INFORMATION HAS BEEN OBTAINED FROM THE VARIOUS UTILITY COMPANIES AND IS EITHER FROM COMPANY RECORD DRAWINGS OR COMPANY PROVIDED FIELD LOCATIONS. THE PLAN LOCATIONS SHOWN ARE NOT GUARANTEED. ADDITIONAL EXISTING UTILITIES MAY ALSO BE ENCOUNTERED.
3. ALL STUBS AND PLUGGED PIPES SHALL BE LOCATED WITH GREEN PLASTIC TAPE IN THE SAME MANNER AS RISERS.
4. COST OF EXCAVATION, HAULING, AND DUMPING OF EXCESS EXCAVATION SHALL BE SUBSIDIARY TO THE PROJECT.
5. CONTRACTOR SHALL NOTIFY THE FOLLOWING UTILITY COMPANIES PRIOR TO ANY EXCAVATION:

ARKLA GAS COMPANY	942-8350
BELL TELEPHONE	1-316-571-2115
CABLEVISION	262-0661
GAS SERVICE COMPANY	263-7511
KANSAS GAS & ELECTRIC	261-6248
KANSAS ONE-CALL	1-800-344-7233

BENCH MARKS

B.M. #1 BROWN MARKER @ TOP OF
EXISTING CONC. WALL.
(COORDINATES 1885.41 N, 11733.20 E)
ELEV. = 134.65



CONTRACTOR & FIELD ENGINEER
SHALL CONTACT LOREN D.
JOHNSON, 48 HOURS PRIOR
TO CONSTRUCTION FOR COORDINATION
& ACCESS AT (942-2214)

INDEX TO DRAWINGS

SHEET NO.	DESCRIPTION
1	TITLE & LOCATION
2	PLAN & PROFILE

APPROVED AS NOTED
By CITY ENGINEER OF WICHITA
Sanitary Sewers *EJB 4/17/86*
Storm Sewers _____
Driveway Approaches _____
Water Mains _____

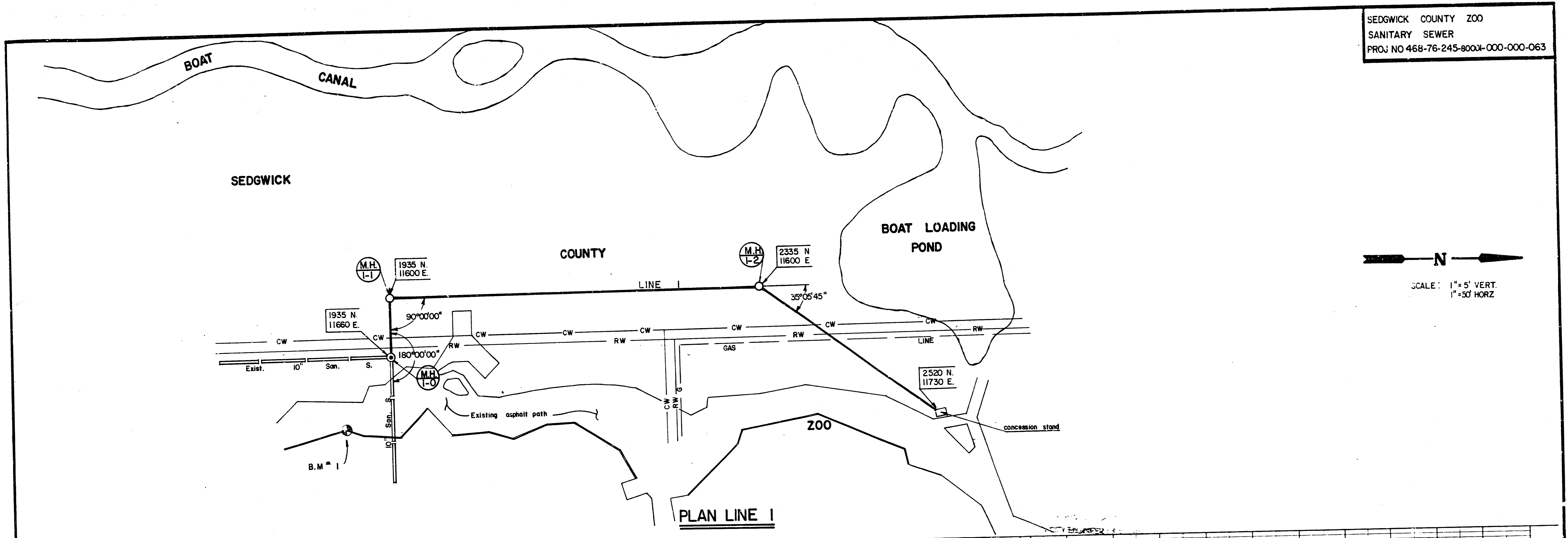
NOTE TO CONTRACTOR

This project will be constructed under the supervision of the CITY ENGINEER and conforming to the SPECIFICATIONS of the CITY OF WICHITA. The CONTRACTOR will pay the City of Wichita for all costs of plan review, inspection and booking per contract.

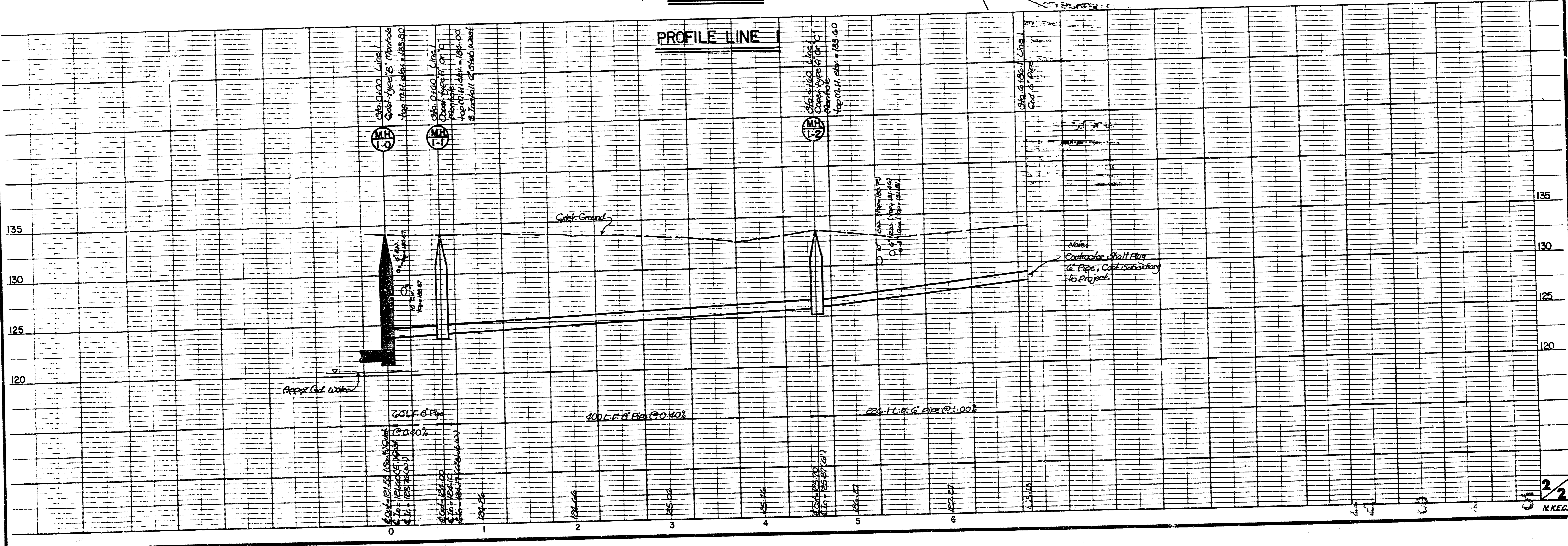
*Booked
4-22-86*

	SANITARY SEWER	Design A.M.S.
	FOR SEDGWICK COUNTY ZOO	Drawn by E.C.G.
		Checked by
		Date
		Job no.
MID-KANSAS ENGINEERING CONSULTANTS PA 3500 NORTH ROCK ROAD BUILDING #800 WICHITA, KANSAS 67226		Sheet 1 of 2
		682-6561

FILMED FROM THE BEST
AVAILABLE COPY



N
 SCALE: 1" = 5' VERT.
 1" = 50' HORZ.



Notes:
 Contractor shall verify
 all pipe, catch basins, etc.
 to project.