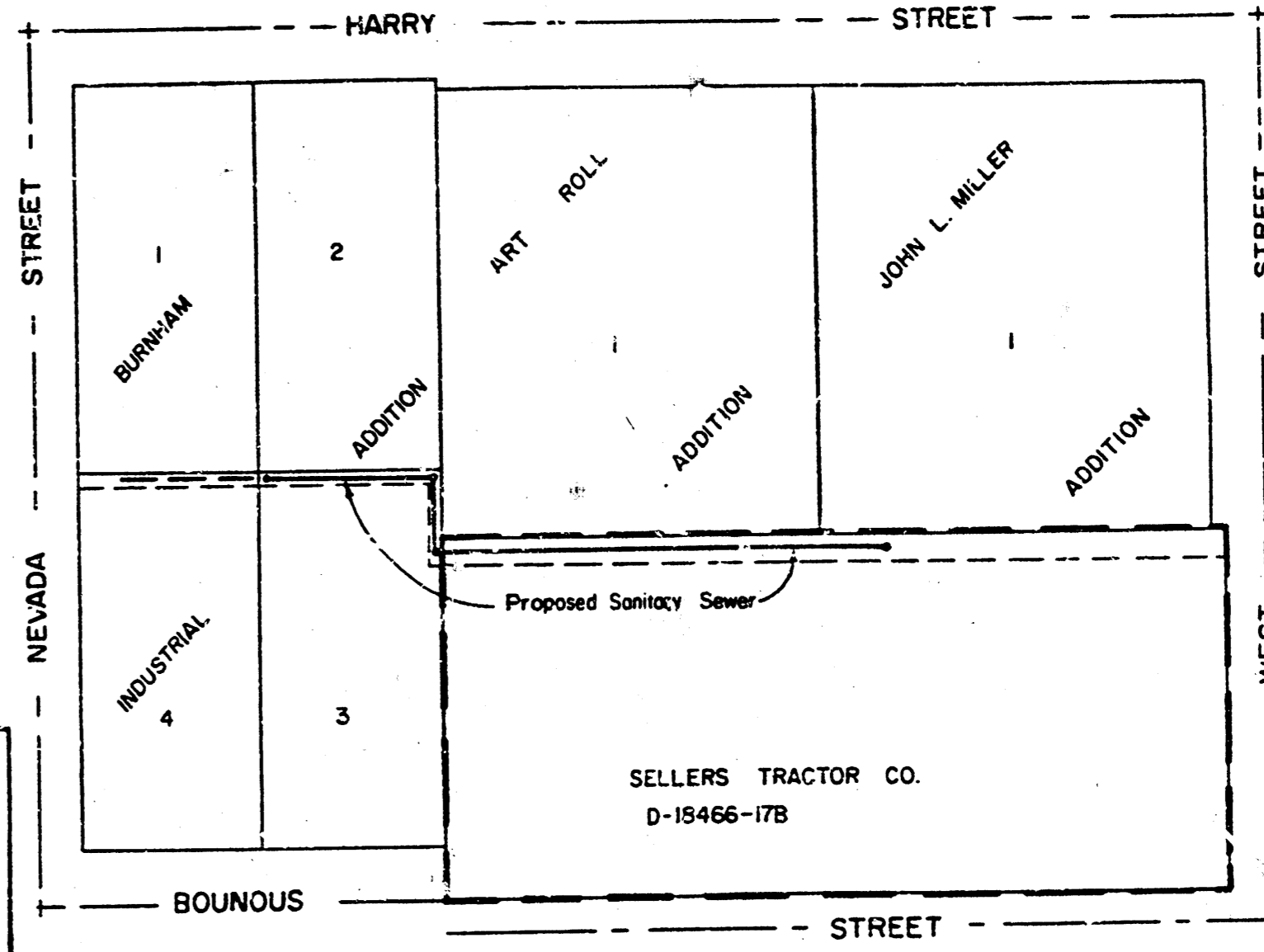
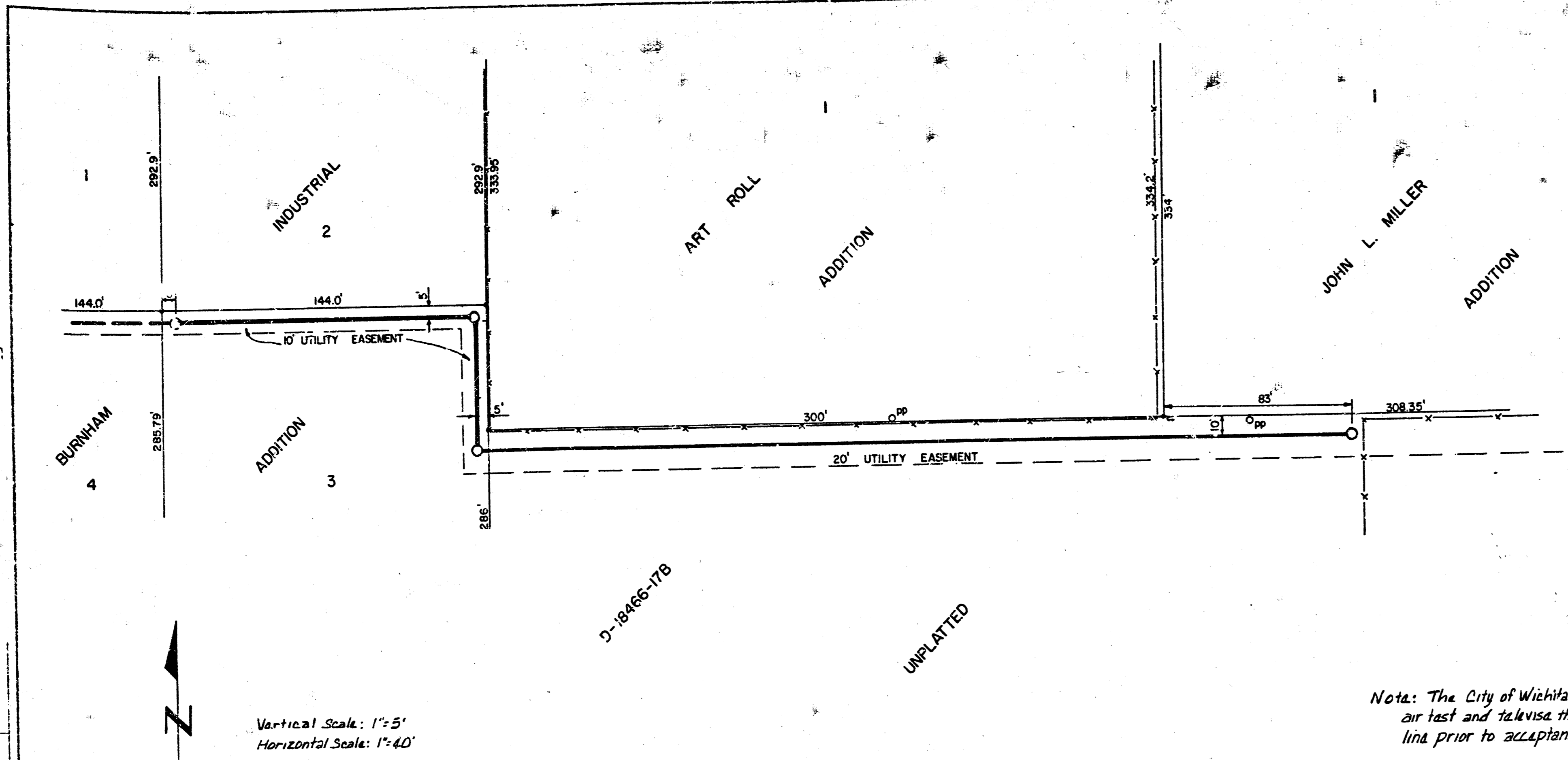


SELLERS TRACTOR CO. SANITARY SEWER
PROJECT NO. 468-76-245-80001-000-000-094

MICHAEL E. LINDEBAK, CITY ENGINEER
NOVEMBER, 1986

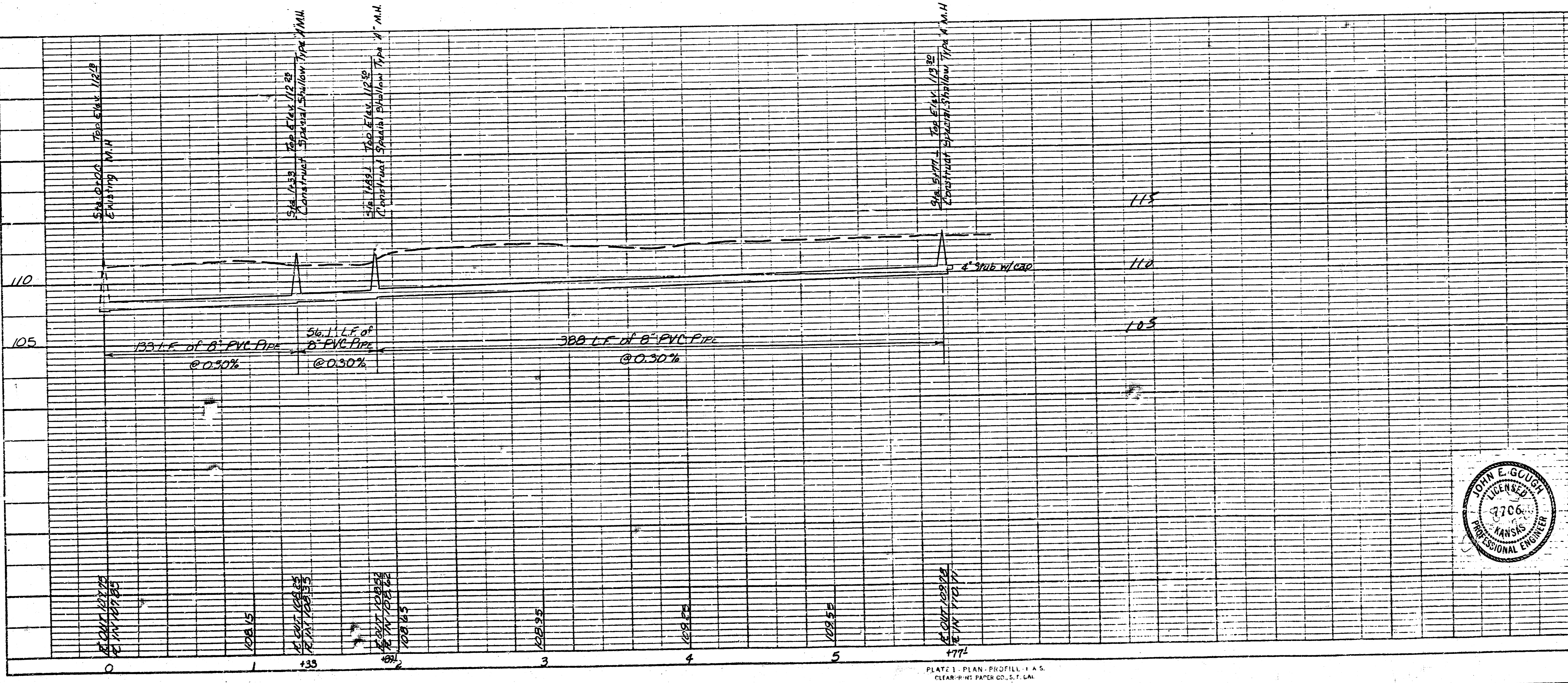


Quantities	
577	L.F. 8" Pipe
3	Ea. Manholes
1	Ea. 4" Stub out
1	Ea. Connect to existing M.H.

PLAN
DATE: _____
BY: _____
CHECKED: _____
DATE: _____

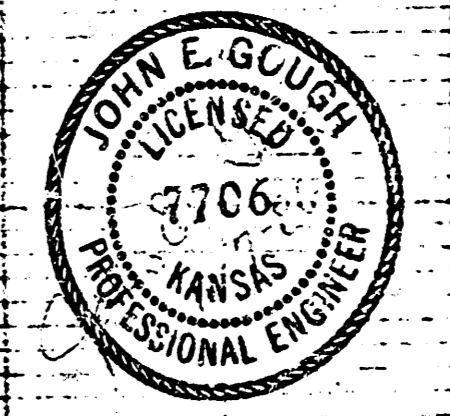
Vertical Scale: 1"=5'
Horizontal Scale: 1"=40'

B.M. Elev 111.77
Wichita dec. 53' west and 43' south of
the centerlines of Harry and West Streets.



QUANTITIES	
Sanitary Sewers	577 L.F. 8" PVC
Storm Sewers	0
Driveway Approaches	0
Water Mains	0
Other	0

NOTE TO CONTRACTOR
This project will be constructed under the supervision of the CITY ENGINEER and conforming to the SPECIFICATIONS OF THE CITY OF WICHITA. The CONTRACTOR will pay the City of Wichita for all cost of pipe, manhole, inspection and testing per contract.



WICHITA, KANSAS	
SANITARY SEWER - EXTENSIONS	
PLAN AND PROFILE	
Project No. 468-76-245-80001-000-000-094	
Sta. 0+00 to Sta. 5+77	
CASTLE & ASSOCIATES ENGINEERS WICHITA, KANSAS	DSG JMK DR JMK CH
DATE: November 1986	APP: _____
DWG FILE NO. 8651-D-60.036	SHEET NO. 1 OF 1

10 3 5 5 1/2

FILMED FROM THE BEST AVAILABLE COPY