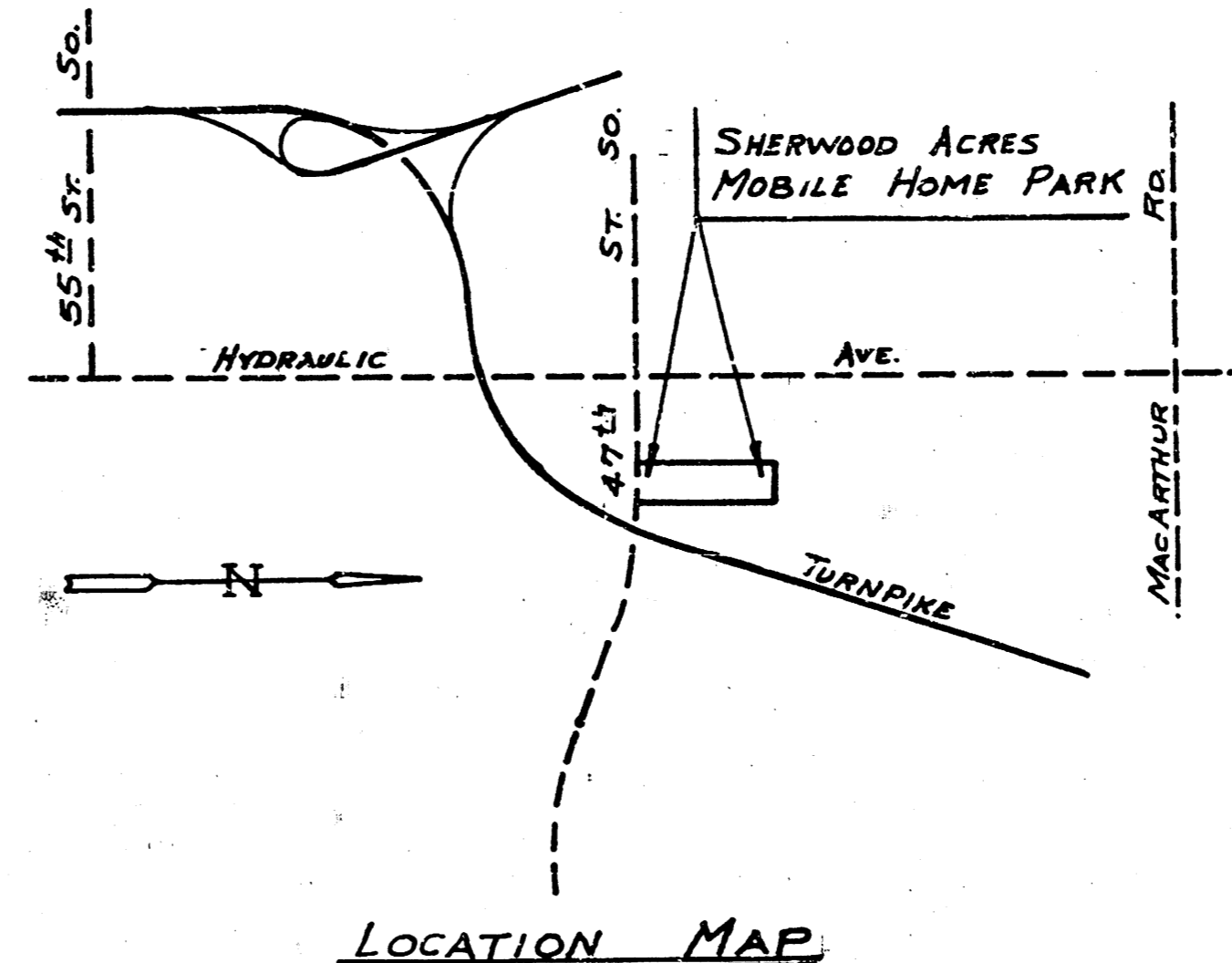
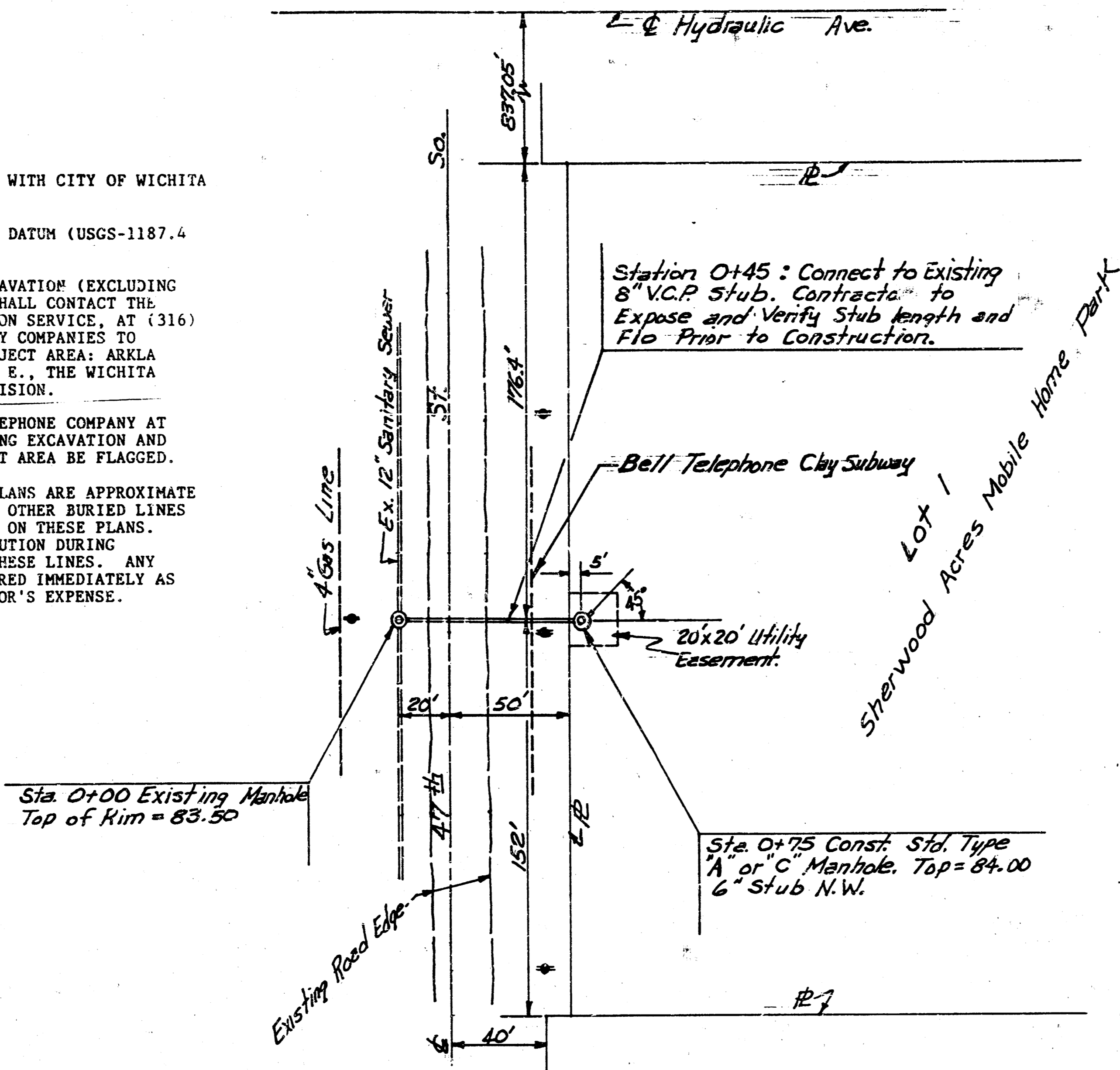


GENERAL NOTES

1. ALL CONSTRUCTION AND MATERIALS TO COMPLY WITH CITY OF WICHITA SPECIFICATIONS AND STANDARDS.
2. ALL ELEVATIONS SHOWN ARE CITY OF WICHITA DATUM (USGS-1187.4 = CITY DATUM).
3. AT LEAST 48 HOURS PRIOR TO BEGINNING EXCAVATION (EXCLUDING WEEKENDS AND HOLIDAYS), THE CONTRACTOR SHALL CONTACT THE KANSAS ONE-CALL SYSTEM, A UTILITY LOCATION SERVICE, AT (316) 687-2370 TO REQUEST THE FOLLOWING UTILITY COMPANIES TO LOCATE ANY EXISTING LINES WITHIN THE PROJECT AREA: ARKLA GAS COMPANY, GAS SERVICE COMPANY, K.G. & E., THE WICHITA WATER DEPARTMENT, AND AIR CAPITAL CABLEVISION.
4. THE CONTRACTOR MUST ALSO NOTIFY BELL TELEPHONE COMPANY AT (913) 571-2115 48 HOURS PRIOR TO BEGINNING EXCAVATION AND REQUEST THAT ANY LINES WITHIN THE PROJECT AREA BE FLAGGED.
5. THE BURIED UTILITIES AS LOCATED ON THE PLANS ARE APPROXIMATE LOCATIONS ONLY. IT SHOULD BE NOTED THAT OTHER BURIED LINES AND CABLES MAY EXIST WHICH ARE NOT SHOWN ON THESE PLANS. THE CONTRACTOR SHALL EXERCISE EXTREME CAUTION DURING TRENCHING OPERATIONS TO AVOID DAMAGING THESE LINES. ANY LINES DAMAGED SHALL BE REPLACED OR REPAIRED IMMEDIATELY AS DIRECTED BY THE ENGINEER AT THE CONTRACTOR'S EXPENSE.

bench Mark: City Standard Disc,  
44' E. of the E. of Hydraulic Ave. &  
52' N. of the E. of 17th St South.  
Elev. = 84.203 City Datum.

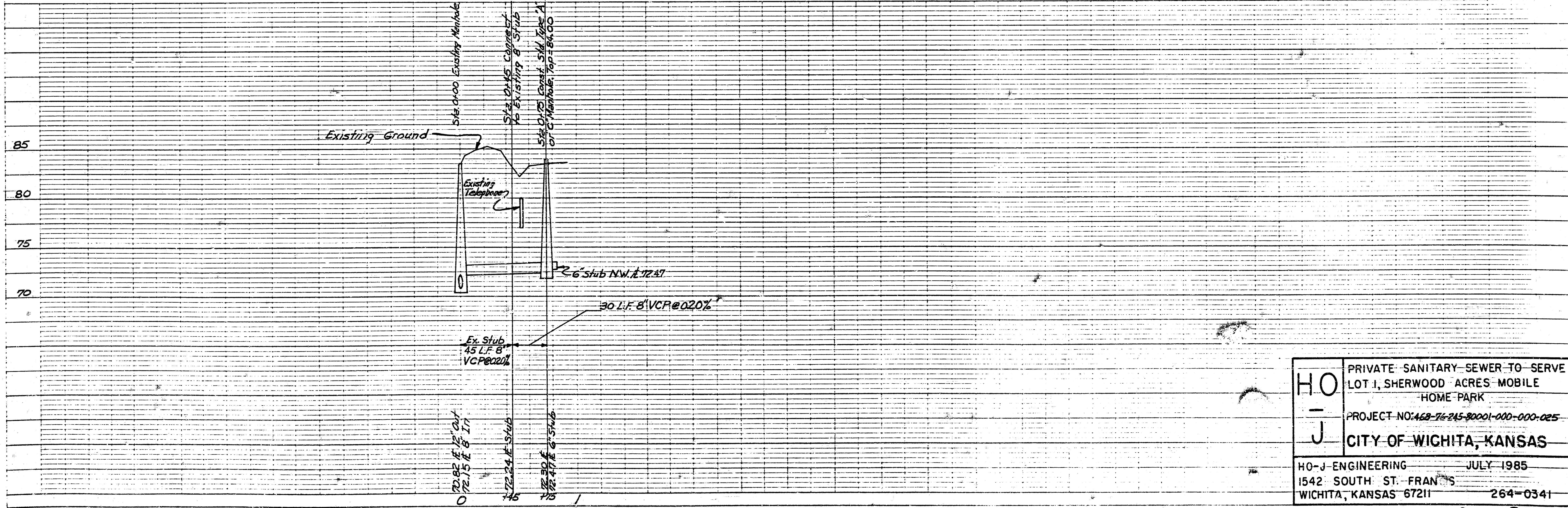


HO-J  
SCALE: 1" = 40' HORIZ.  
1" = 5' VERT.

APPROVED AS NOTED  
By CITY ENGINEER OF WICHITA  
Sanitary Sewers: *[Signature]*  
Storm Sewers: \_\_\_\_\_  
Driveway Approaches: \_\_\_\_\_



NOTE TO CONTRACTOR  
This project will be constructed under the supervision of the CITY ENGINEER and conforming to the SPECIFICATIONS of the CITY OF WICHITA. The CONTRACTOR will pay the City of Wichita for all costs of plan review, inspection and booking per contract.



PLAN  
DATE: \_\_\_\_\_  
BY: \_\_\_\_\_  
CHECKED BY: \_\_\_\_\_  
DATE: \_\_\_\_\_

PROFILE  
DATE: \_\_\_\_\_  
BY: \_\_\_\_\_  
CHECKED BY: \_\_\_\_\_  
DATE: \_\_\_\_\_

HO - J	PRIVATE-SANITARY SEWER-TO-SERVE LOT 1, SHERWOOD ACRES MOBILE HOME PARK
	PROJECT NO: 468-76-245-90001-000-000-025 CITY OF WICHITA, KANSAS
HO-J-ENGINEERING JULY 1985	
1542 SOUTH ST. FRANCIS WICHITA, KANSAS 67211 264-0341	

14 5 3 3 1/2