

CITY OF WICHITA, KANSAS

Sanitary Sewer Extension to Serve
Tract 'B', Lot 14, Sherwood Glen 5th Add.

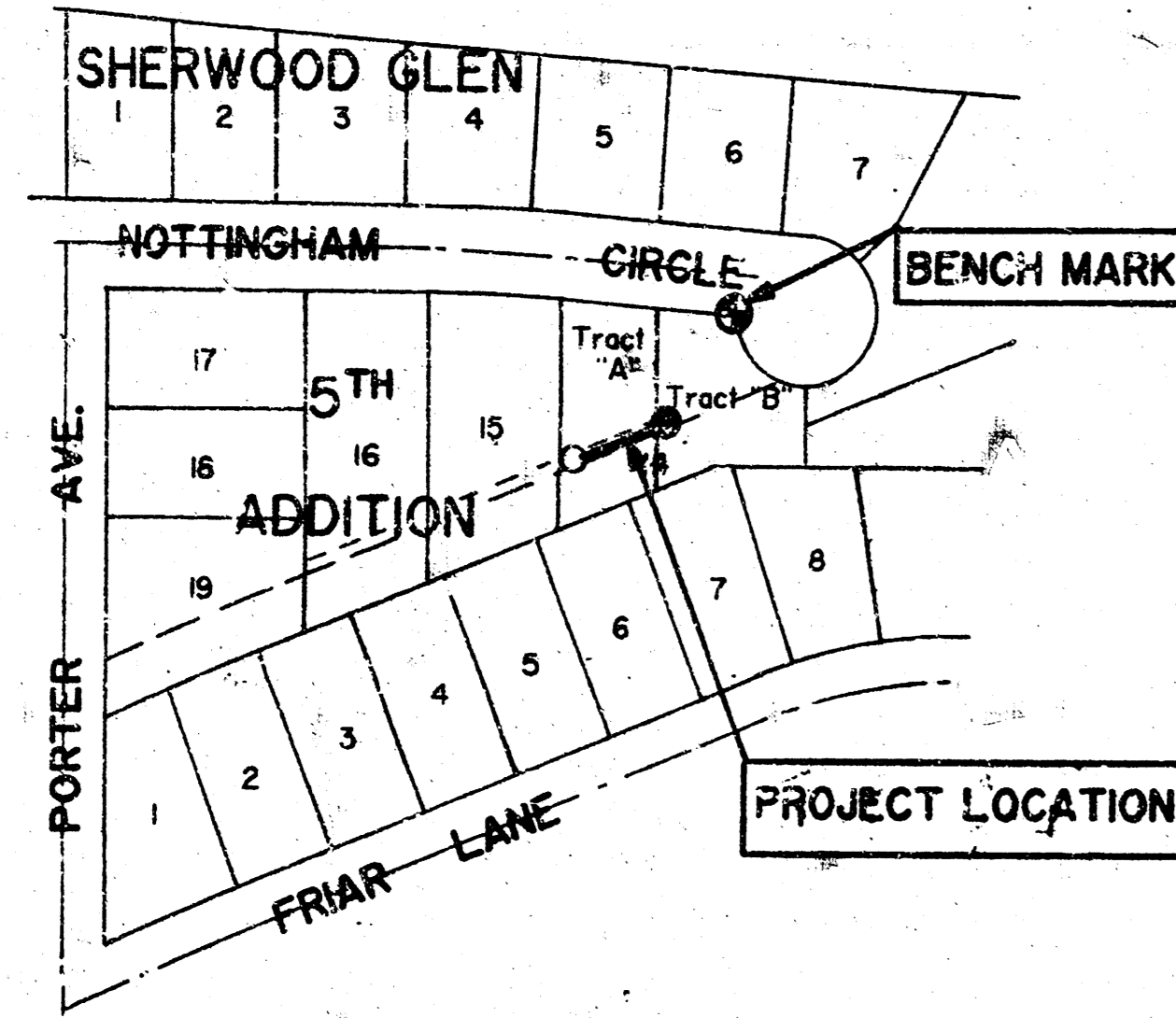
MICHAEL E. LINDEBAK, P.E., CITY ENGINEER

PROJECT #: 217PPS

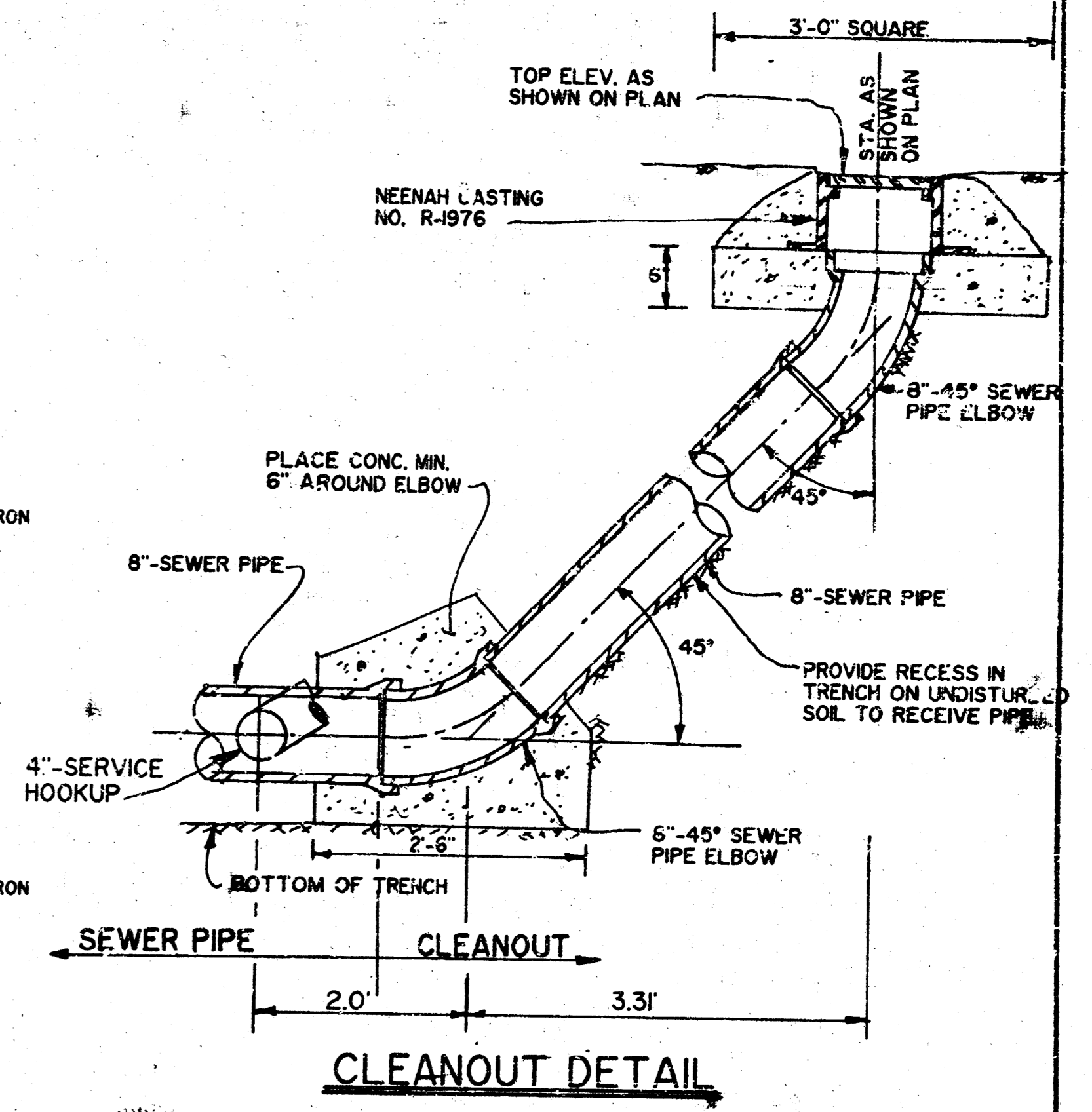
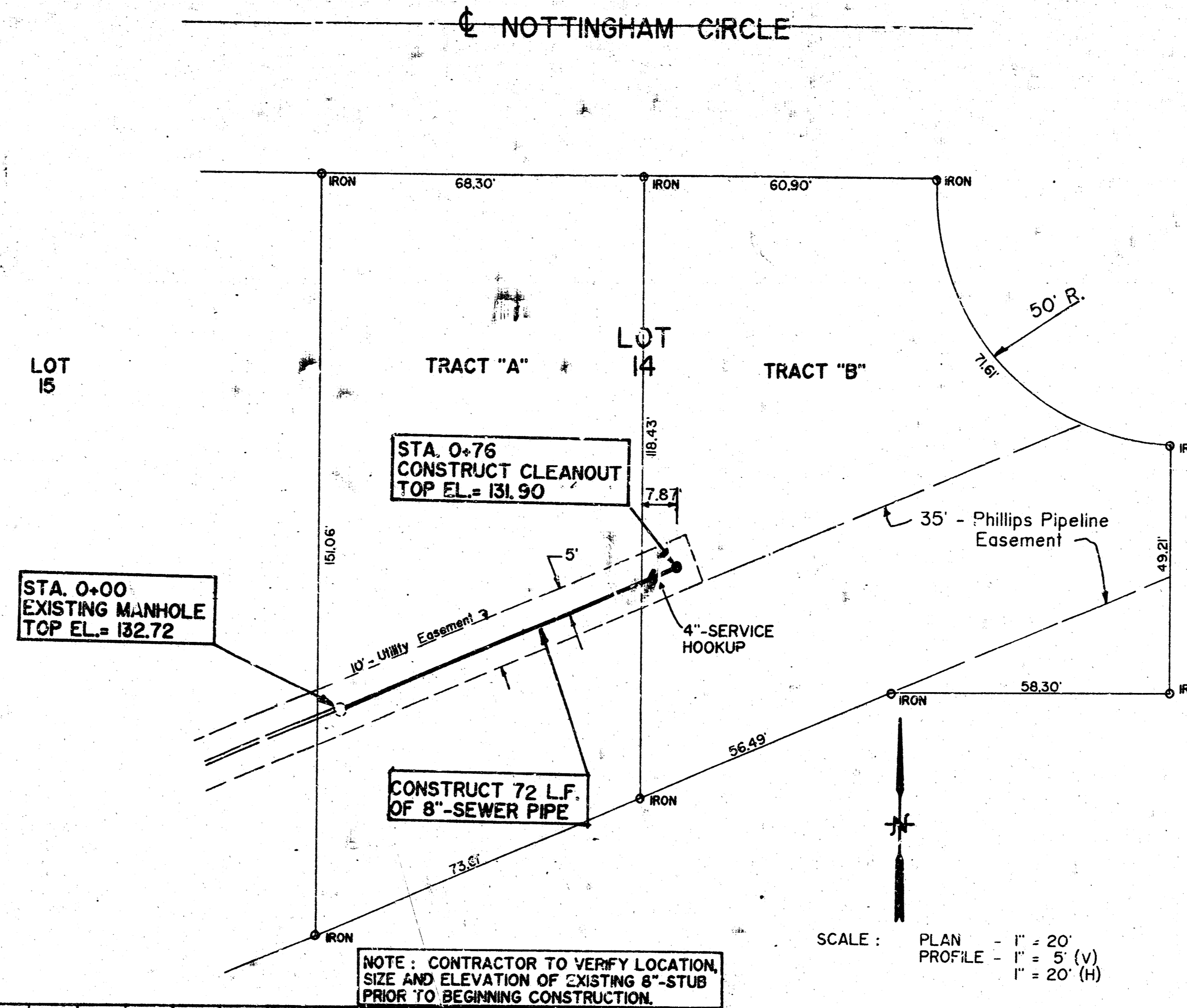
INDEX #: 607861

GENERAL NOTES:

1. BENCH MARK: 1" CHISELED ON TOP OF CURB, SOUTH SIDE OF NOTTINGHAM CIRCLE; AT BEGINNING RETURN OF CURVE - S.A.C. ELEVATION = 132.48
2. THE CONTRACTOR IS RESPONSIBLE FOR PRESERVING PROPERTY IRONS. THE CONTRACTOR WILL BE REQUIRED TO RE-ESTABLISH ANY PROPERTY IRONS WHICH ARE DAMAGED OR DESTROYED BY HIS CONSTRUCTION OPERATIONS. SUCH IRONS SHALL BE RE-ESTABLISHED BY A LICENSED LAND SURVEYOR OR LICENSED PROFESSIONAL ENGINEER IN ACCORDANCE WITH STATE LAW.

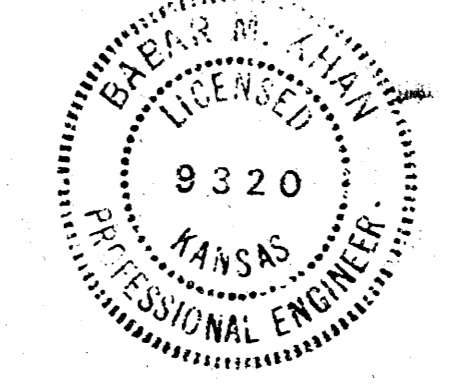


LOCATION MAP



CLEANOUT DETAIL

SCALE: PLAN - 1" = 20'
PROFILE - 1" = 5' (V)
1" = 20' (H)



NOTE: CONTRACTOR TO VERIFY LOCATION, SIZE AND ELEVATION OF EXISTING 8" STUB PRIOR TO BEGINNING CONSTRUCTION.

PLAN

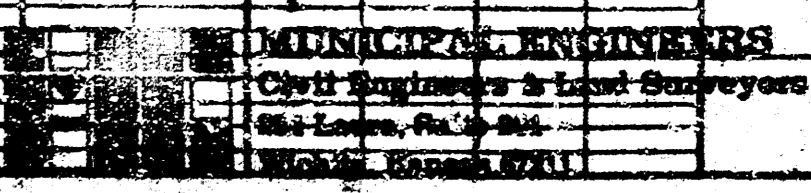
DATE	
BY	
REVISION	
NO.	
DESCRIPTION	
DATE	
BY	
REVISION	
NO.	
DESCRIPTION	
DATE	
BY	
REVISION	
NO.	
DESCRIPTION	

PROFILE

DATE	
BY	
REVISION	
NO.	
DESCRIPTION	
DATE	
BY	
REVISION	
NO.	
DESCRIPTION	
DATE	
BY	
REVISION	
NO.	
DESCRIPTION	

NOTE TO CONTRACTOR
INSPECTION AND TESTING FOR THIS PROJECT IS TO BE PROVIDED BY A LICENSED CONSULTING ENGINEERING FIRM UNDER CONTRACT WITH THE OWNER/DEVELOPER SAID INSPECTION TO BE IN ACCORDANCE WITH THE CITY OF WICHITA STANDARD PRACTICES FOR ENGINEERING PRACTICES AND DEFINED BY A LICENSED PROFESSIONAL ENGINEER. NO WORK SHALL BE CONSIDERED IN DELETED EASEMENTS OR THE PUBLIC RIGHT-OF-WAY BY THE CONTRACTOR WITHOUT SUCH INSPECTION NOR SHALL ANY WORK BE COMPLETED IN DELETED EASEMENTS OR PUBLIC RIGHT-OF-WAY WITHOUT WRITTEN AUTHORIZATION BY THE CITY ENGINEER.

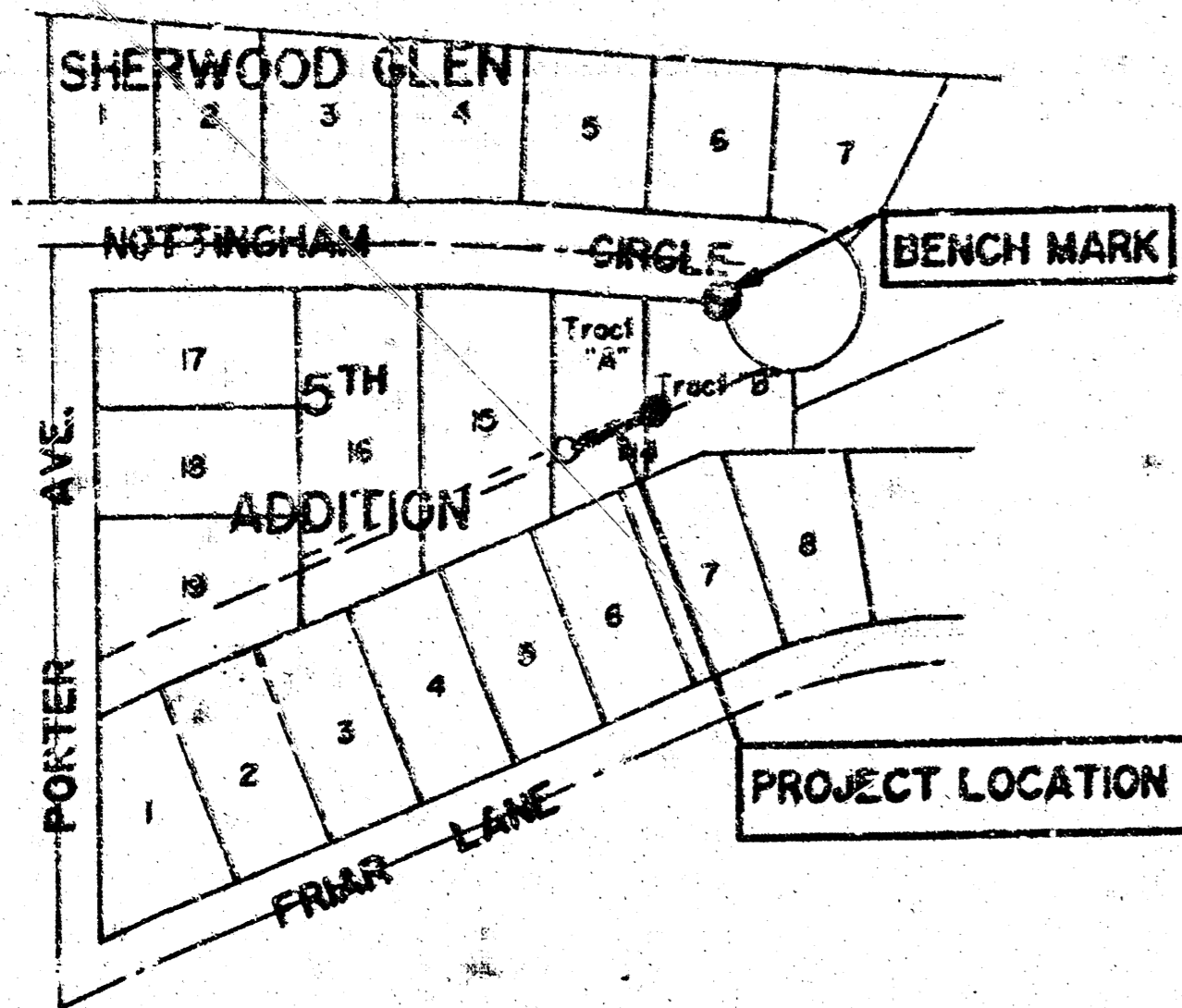
APPROVED AS NOTED
By CITY ENGINEER OF WICHITA
Sanitary Sewer: *[Signature]*
Storm Sewer: *[Signature]*
Easements/Approaches:
Water Main:
Pave:



CITY OF WICHITA, KANSAS

Sanitary Sewer Extension to Serve
 Tract 'B', Lot 14, Sherwood Glen 5th Add.
 MICHAEL E. LINDEBAK, P.E., CITY ENGINEER

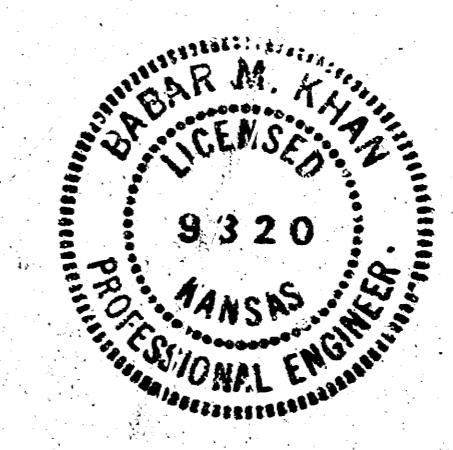
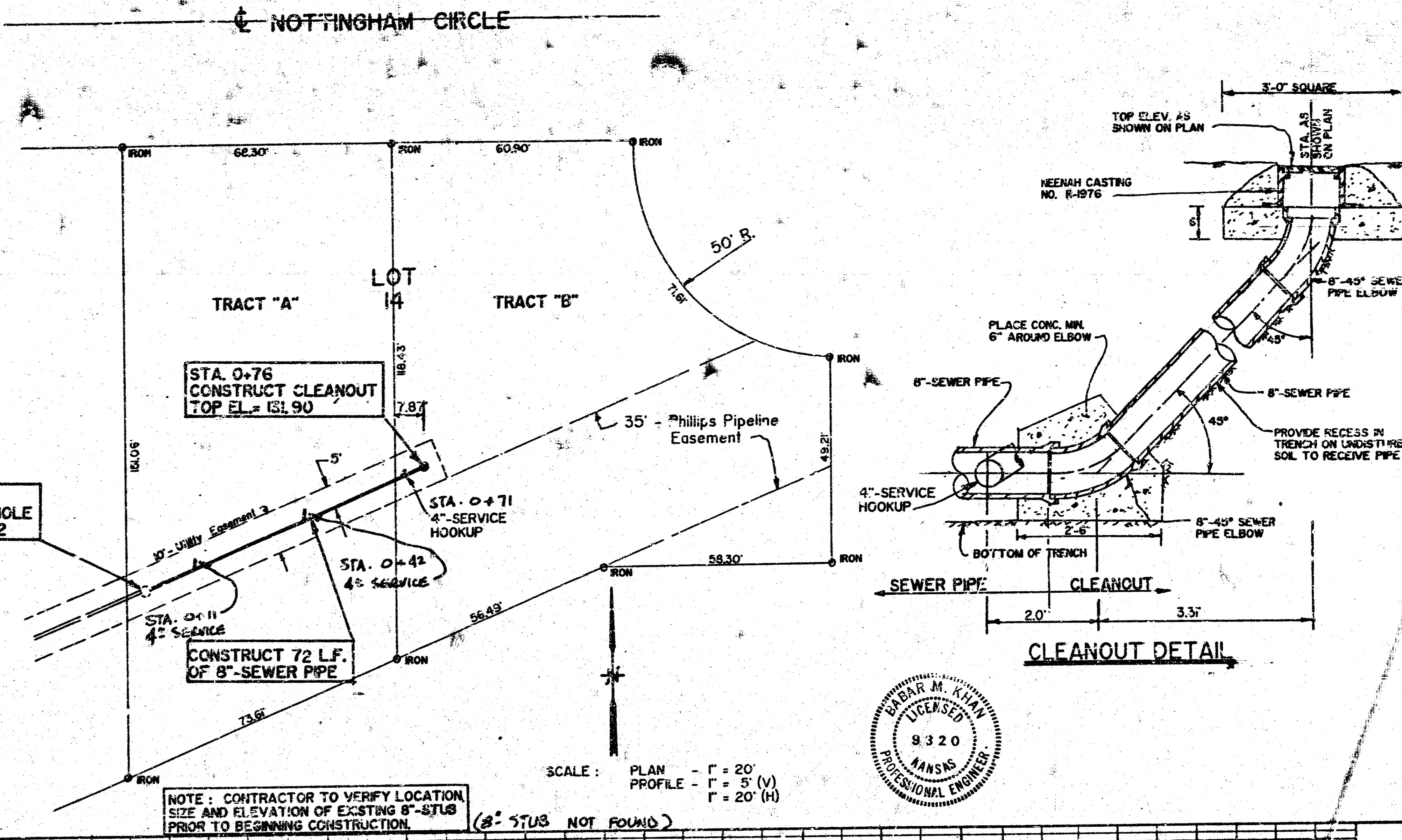
PROJECT # : 217PPS
 INDEX # : 607861



LOCATION MAP

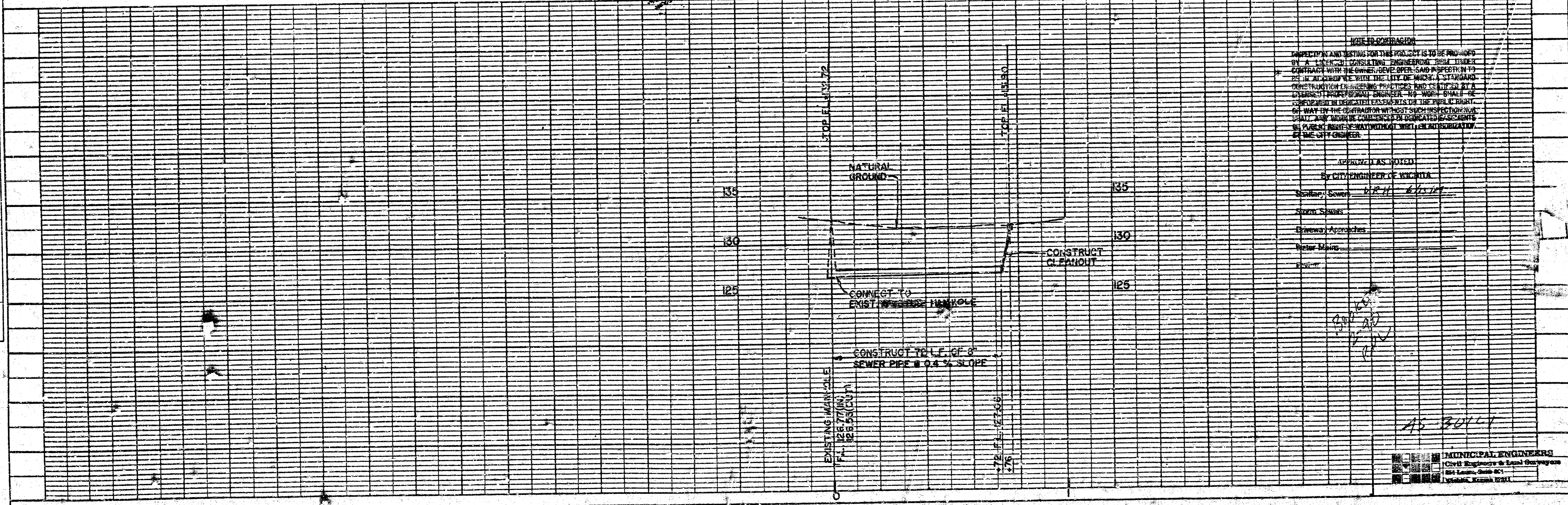
GENERAL NOTES:

- BENCH MARK: 1' CHISEL ON TOP OF CURB, SOUTH SIDE OF NOTTINGHAM CIRCLE, AT BEGINNING RETURN OF CURVE. ELEVATION = 132.46
- THE CONTRACTOR IS RESPONSIBLE FOR PRESERVING PROPERTY FROM THE CONTRACTOR WILL BE REQUIRED TO RE-ESTABLISH ANY PROPERTY BOUNDS WHICH ARE DAMAGED OR DESTROYED BY HIS CONSTRUCTION OPERATIONS. SUCH BOUNDS SHALL BE RE-ESTABLISHED BY A LICENSED LAND SURVEYOR OR LICENSED PROFESSIONAL ENGINEER IN ACCORDANCE WITH STATE LAW.



NOTE TO CONTRACTOR
 INSPECTION AND TESTING FOR THIS PROJECT IS TO BE PROVIDED BY A LICENSED CONSULTING ENGINEERING FIRM UNDER CONTRACT WITH THE OWNER. DEVELOPER'S INSPECTION TO BE IN ACCORDANCE WITH THE CITY OF WICHITA STANDARD CONSTRUCTION INSPECTION PRACTICES AND CERTIFIED BY A LICENSED PROFESSIONAL ENGINEER. NO WORK SHALL BE CONSIDERED IN DETAIL UNLESS IT IS THE PUBLIC RIGHT-OF-WAY IN THE CITY OF WICHITA. SUCH INSPECTION SHALL BE CONDUCTED BY THE CITY ENGINEER OR HIS REPRESENTATIVE. NO WORK SHALL BE CONSIDERED UNLESS IT IS THE PUBLIC RIGHT-OF-WAY IN THE CITY OF WICHITA.

NO.	DATE	REVISIONS



SANITARY SEWER EXTENSION TO SERVE TRACT "B", LOT 14, SHERWOOD GLEN 5TH ADDITION

PLATE 1 - PLAN - PROFILE - P.A.S.
 CLEARPRINT PAPER CO., S.F. CAL.
 NO. 10221

MUNICIPAL ENGINEERS
 Civil Engineers & Equal Opportunity
 184 Kansas, Suite 201
 Wichita, Kansas 67201