

LIFT STATION & FORCE MAIN SERVING THE SHORES A PART OF KINKAID PARK FIFTH ADDITION

CITY OF WICHITA, KANSAS

M.E. LINDEBAK CITY ENGINEER

APPROVED AS NOTED
By CITY ENGINEER OF WICHITA
Sanitary Sewers *ELB 9/1/84*
Storm Sewers _____
Driveway Approaches _____

NOTIFY THE FOLLOWING COMPANIES PRIOR TO ANY TRENCHING.

ARKLA GAS CO. 942-8350
BELL TELEPHONE 263-3087
CABLEVISION 266-6817
GAS SERVICE CO. 263-7511
KANSAS GAS & ELEC. 261-6248
KAN-U-DIG-IT 267-2889

PROJECT NO. 468 76 245 80000 000 000 008

DATE: AUGUST, 1984



MOHRING & ASSOCIATES
CONSULTING ENGINEERS
WICHITA

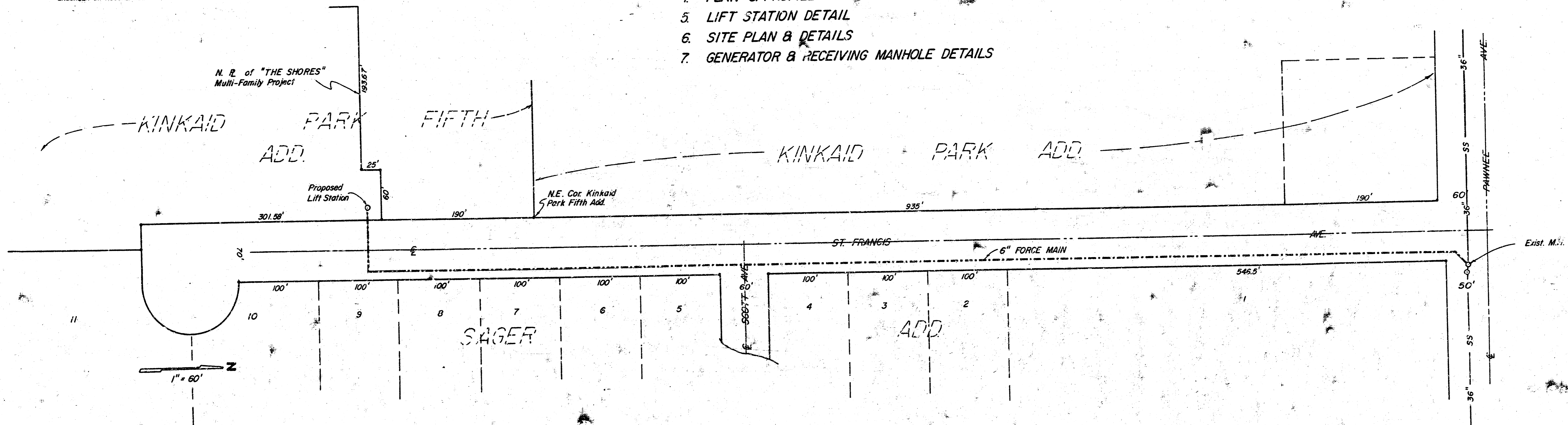
NOTE TO CONTRACTOR

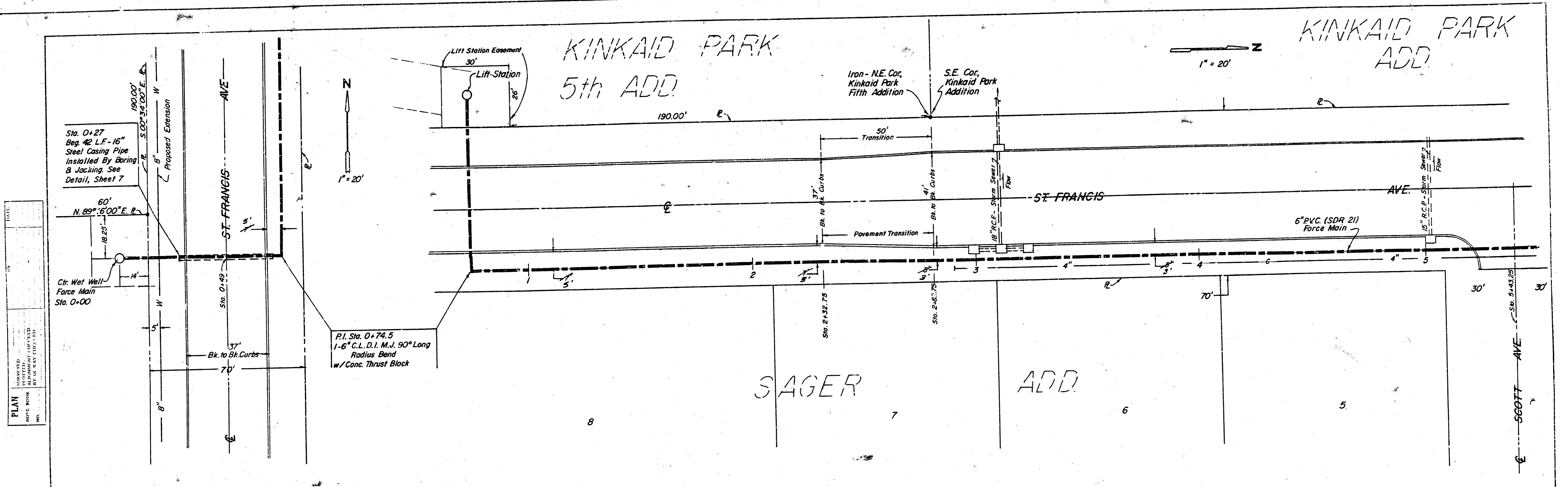
This project will be constructed under the supervision of the CITY ENGINEER and conforming to the SPECIFICATIONS of the CITY OF WICHITA. The CONTRACTOR will prepay the City of Wichita for all costs of inspection.

THE CONTRACTOR SHALL BE RESPONSIBLE FOR PREPARING PROPERTY IRONS. THE CONTRACTOR SHALL BE REQUIRED TO RE-ESTABLISH ANY PROPERTY IRONS WHICH ARE DAMAGED OR DESTROYED BY HIS CONSTRUCTION OPERATIONS. SUCH IRONS SHALL BE RE-ESTABLISHED BY A LICENSED LAND SURVEYOR OR A LICENSED PROFESSIONAL ENGINEER IN ACCORDANCE WITH STATE LAWS.

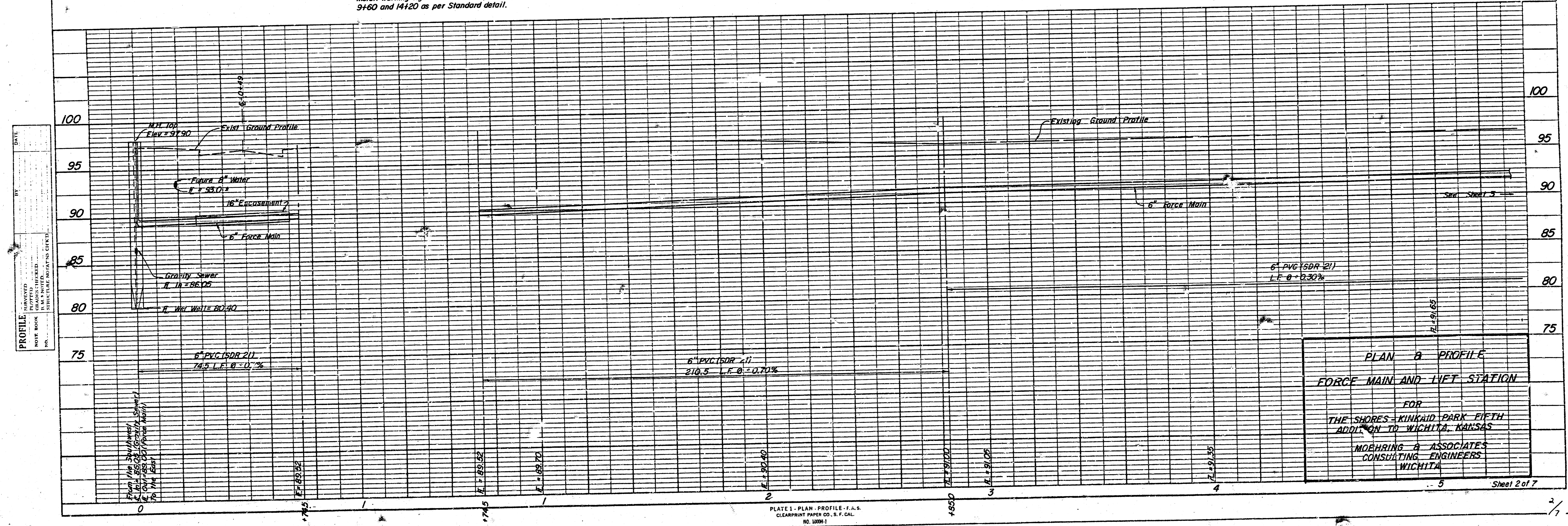
INDEX

1. TITLE SHEET
2. PLAN & PROFILE
3. PLAN & PROFILE
4. PLAN & PROFILE
5. LIFT STATION DETAIL
6. SITE PLAN & DETAILS
7. GENERATOR & RECEIVING MANHOLE DETAILS





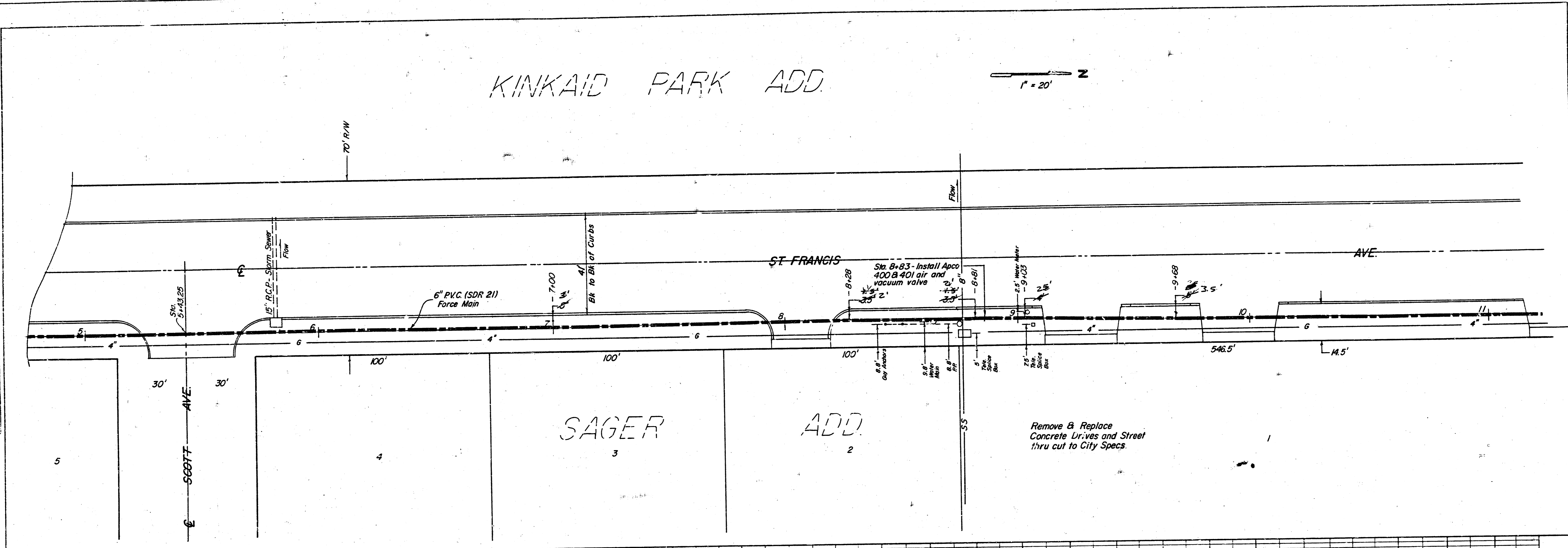
Note:
Install warning signs at Sta. 0+80, 5+00,
9+60 and 14+20 as per Standard detail.



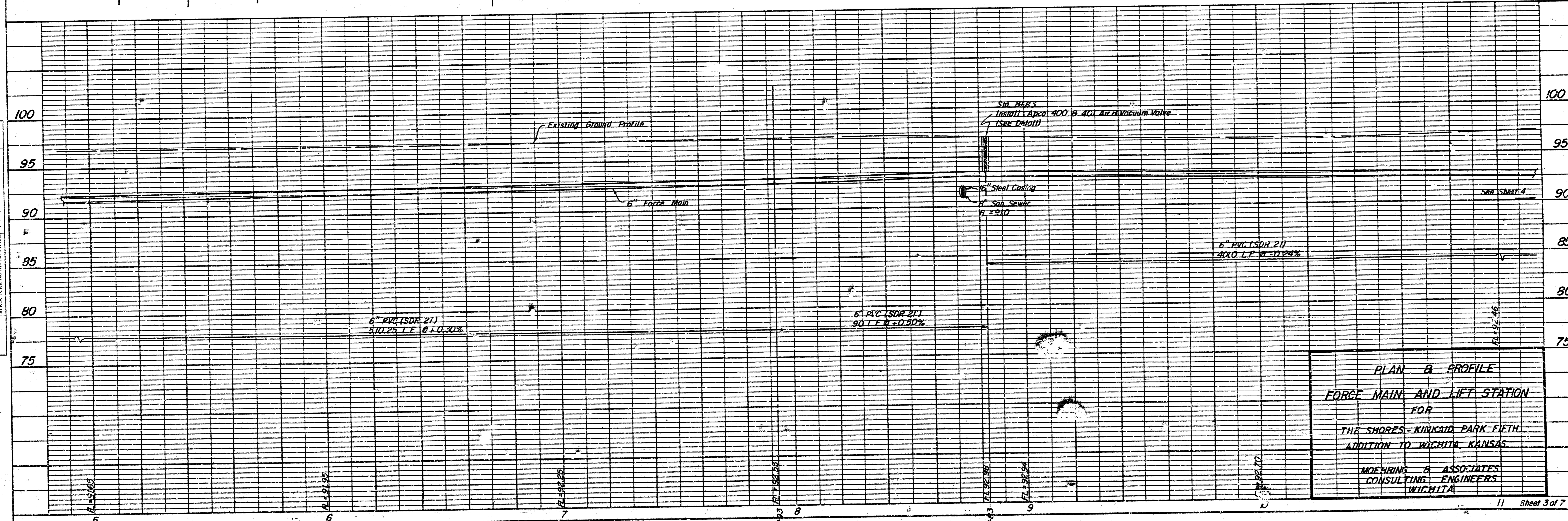
KINKAID PARK ADD

1" = 20'

PLAN
 DATE: _____
 BY: _____
 CHECKED: _____
 APPROVED: _____
 TITLE: _____
 NO. _____

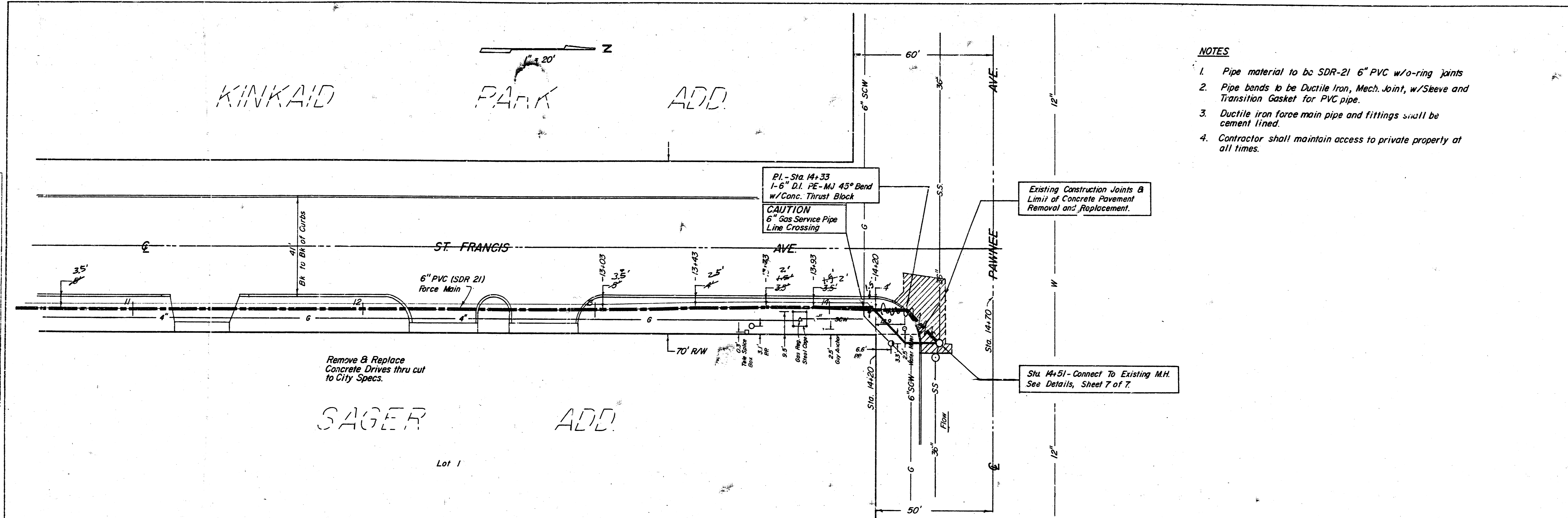


PROFILE
 DATE: _____
 BY: _____
 CHECKED: _____
 APPROVED: _____
 TITLE: _____
 NO. _____

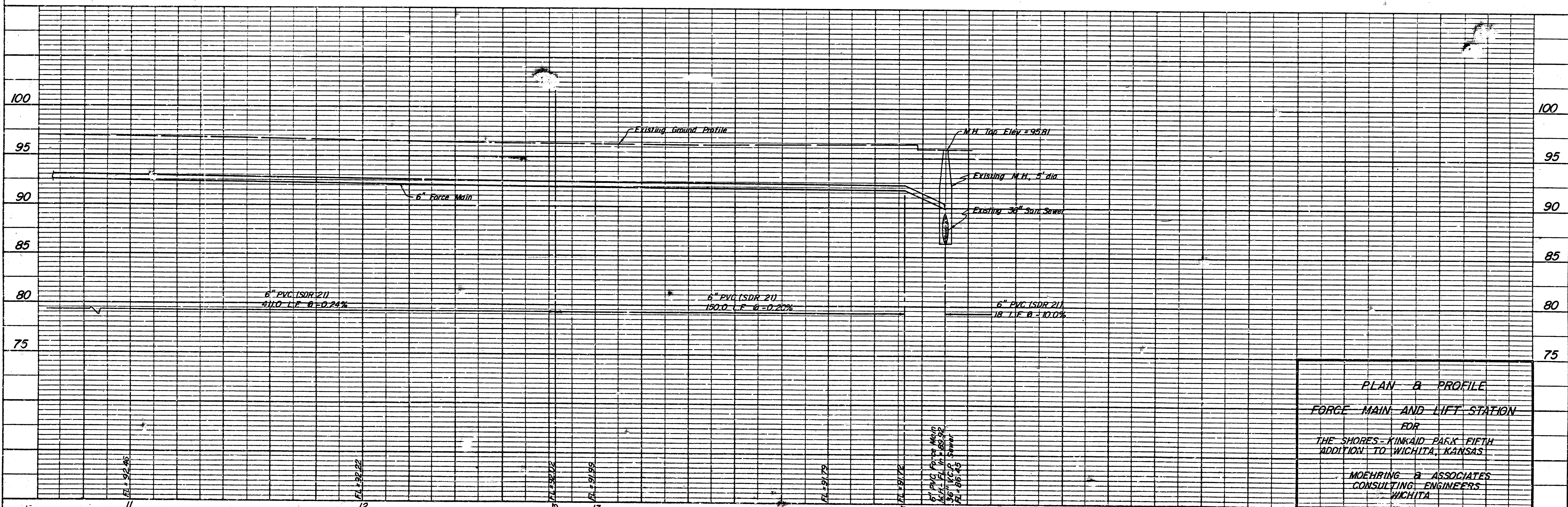


DATE: _____ BY: _____
 PROJECT: _____
 SHEET NO.: _____

DATE: _____ BY: _____
 PROJECT: _____
 SHEET NO.: _____

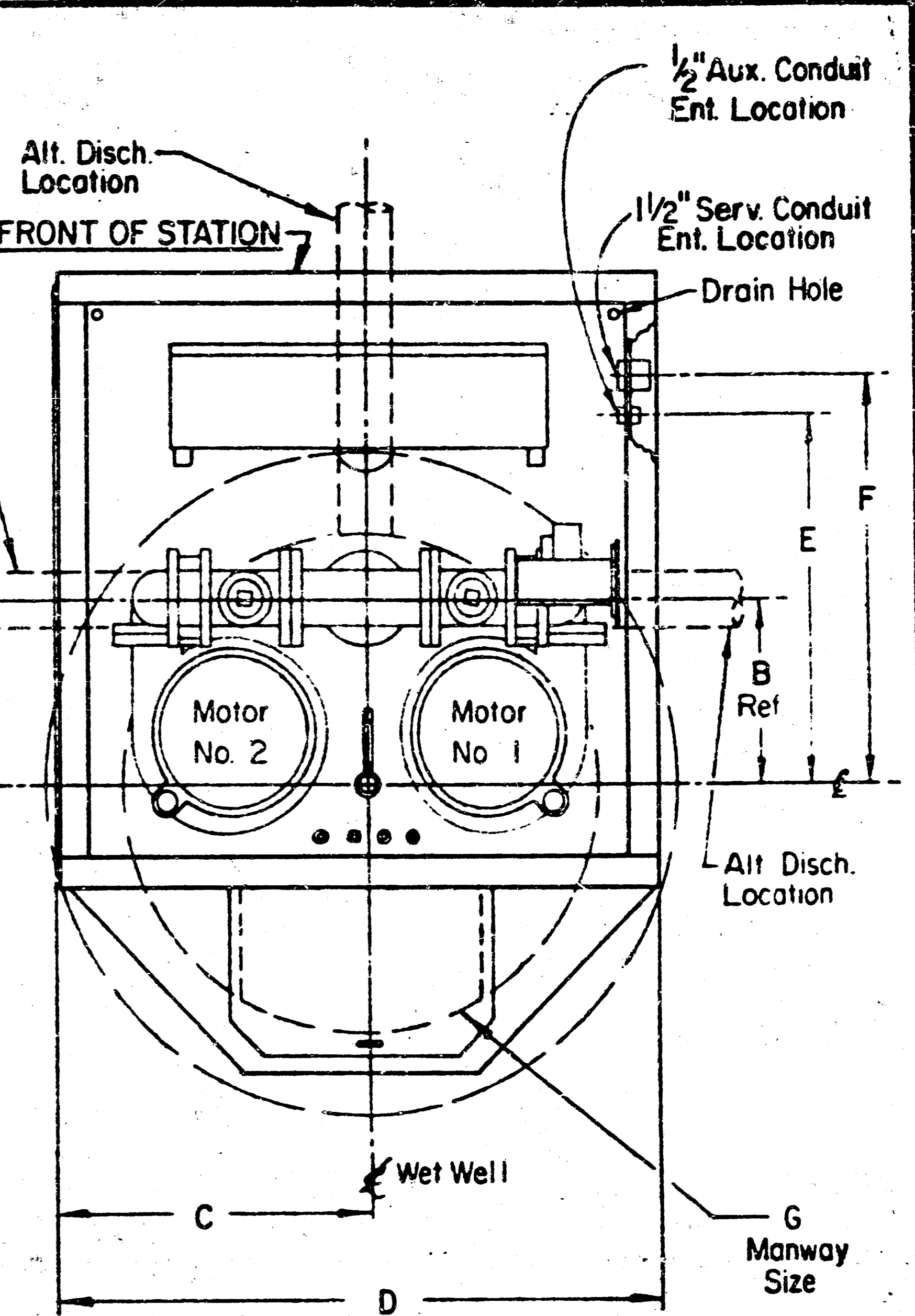
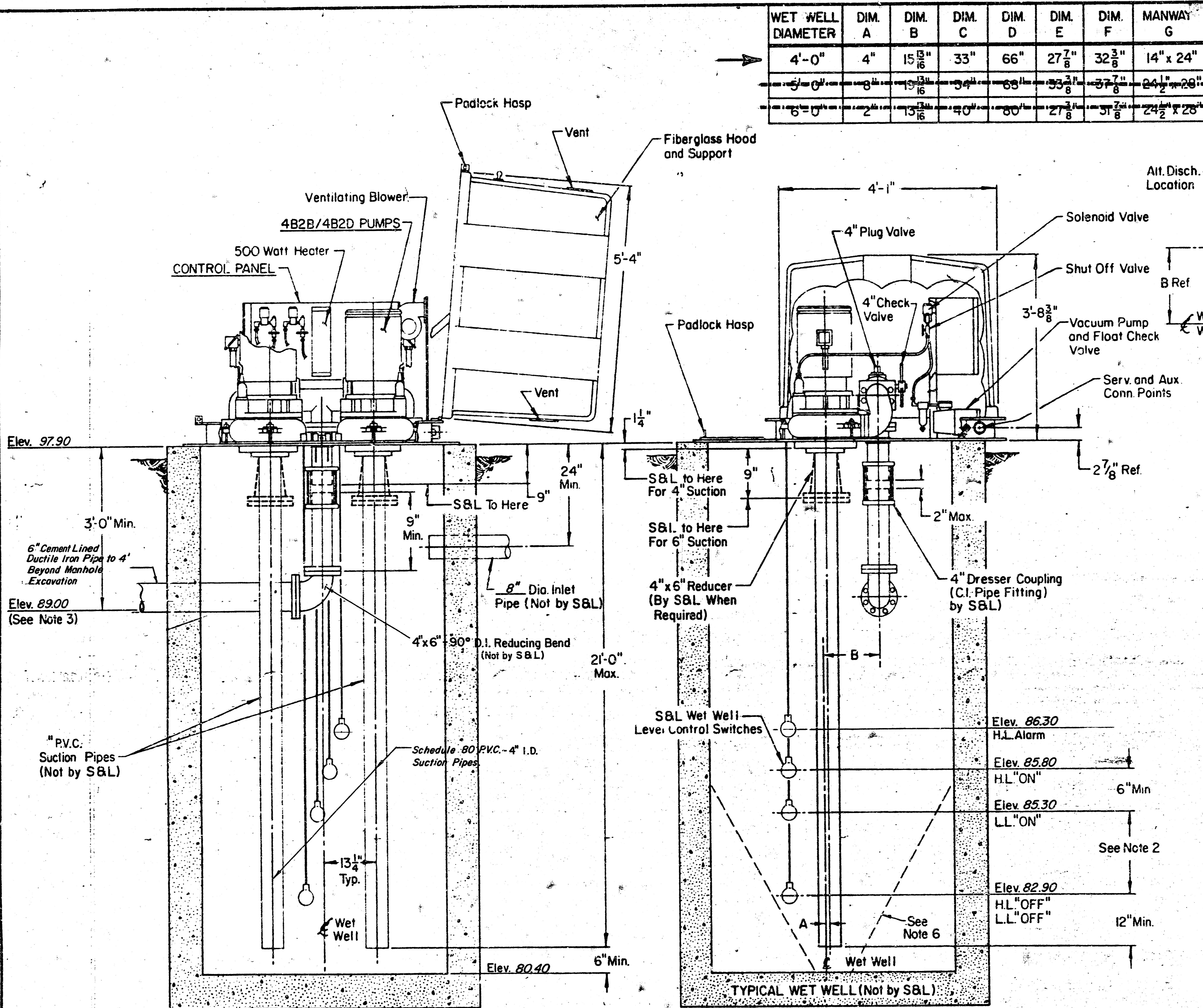


- NOTES**
1. Pipe material to be SDR-21 6" PVC w/o-ring joints
 2. Pipe bends to be Ductile Iron, Mech. Joint, w/Sleeve and Transition Gasket for PVC pipe.
 3. Ductile iron force main pipe and fittings shall be cement lined.
 4. Contractor shall maintain access to private property at all times.



PLAN & PROFILE
FORCE MAIN AND LIFT STATION
 FOR
 THE SHORES - KINKAID PARK FIFTH
 ADDITION TO WICHITA, KANSAS
 MOEHRING & ASSOCIATES
 CONSULTING ENGINEERS
 WICHITA

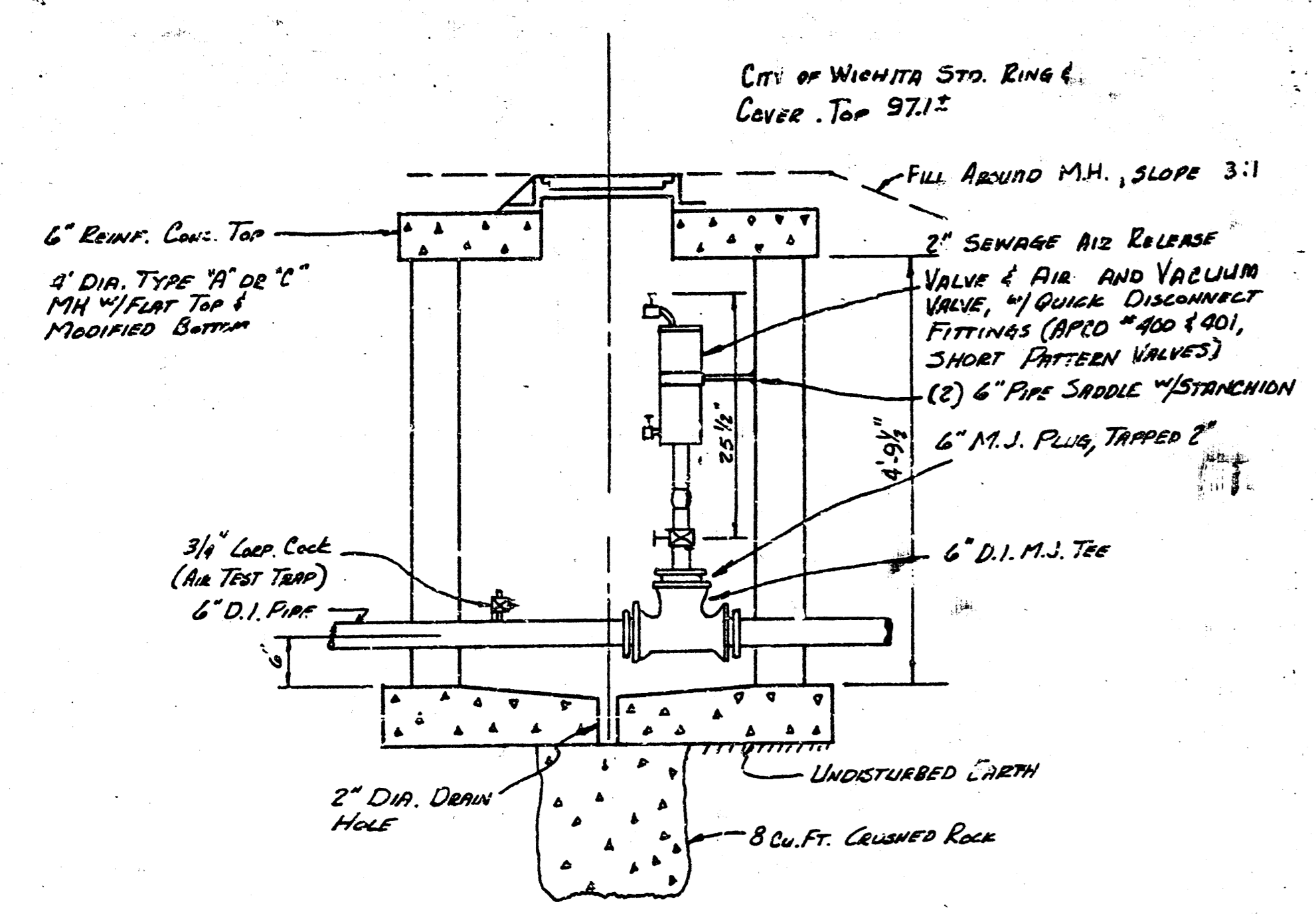
WET WELL DIAMETER	DIM. A	DIM. B	DIM. C	DIM. D	DIM. E	DIM. F	MANWAY G
4'-0"	4"	15 5/8"	33"	66"	27 7/8"	32 3/8"	14" x 24"
6'-0"	6"	15 1/8"	40"	80"	27 7/8"	31 7/8"	24 1/2" x 28"



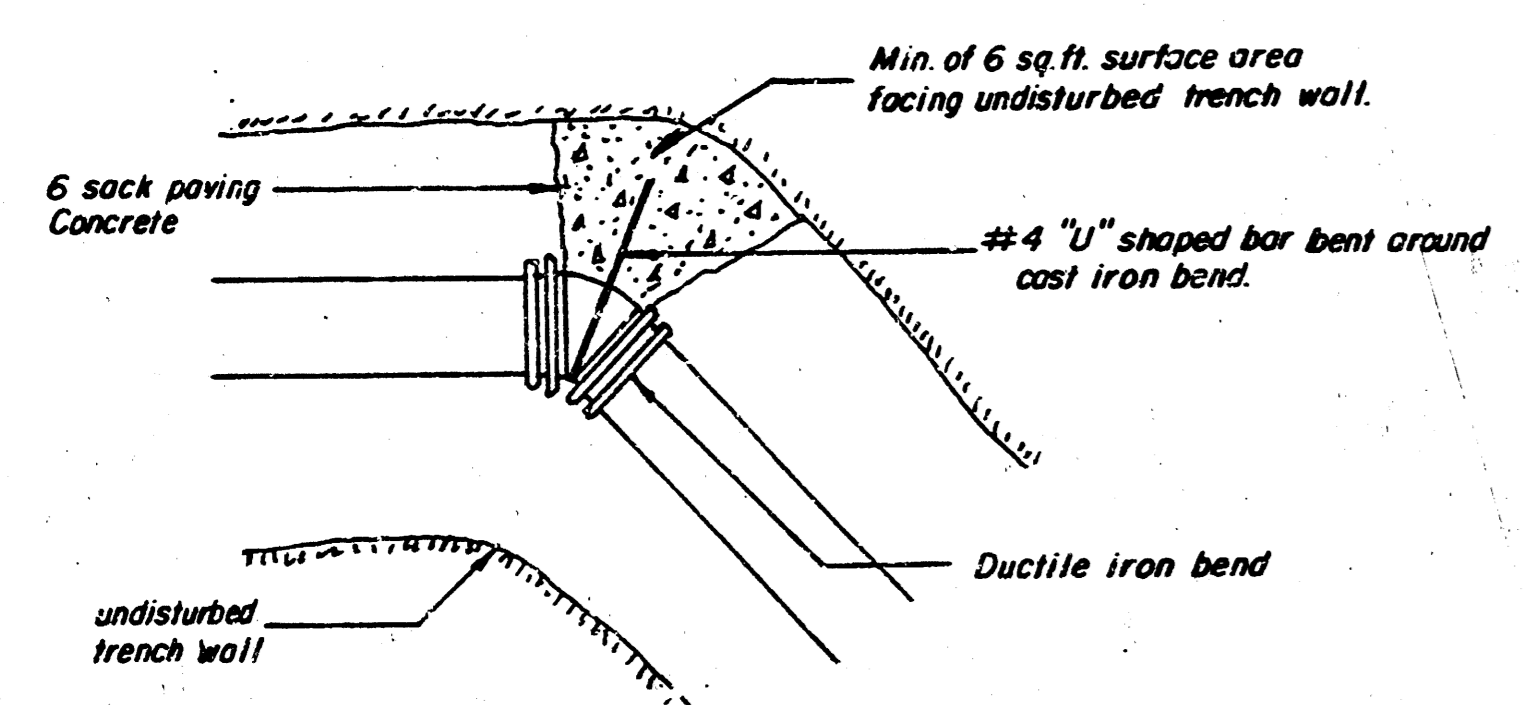
- NOTES:**
1. Maximum Capacity - 400 G.P.M.
 2. Volume in Gallons Between L.L. "ON" and L.L. "OFF" Should Equal Pumping Rate in G.P.M.
 3. If End of Discharge Line is Below Elevation of Discharge Line at Point of Leaving Wet Well, Consult Factory.
 4. If Discharge Line is Less than 200 Feet in Length a Check Valve May be Required - Consult Factory.
 5. Pump Motors - 20 H.P. Maximum.
 6. Provide 60° Slope in Wet Well - As Required.

4B2B/4B2D PUMPS		870196	
THE DESIGN AND DETAIL OF THIS DRAWING IS THE PROPERTY OF SMITH & LOVELESS, INC. AND IS NOT TO BE USED EXCEPT IN CONNECTION WITH OUR WORK. DESIGN AND INVENTION RIGHTS ARE RESERVED. DIMENSIONS ARE IN INCHES UNLESS OTHERWISE NOTED.			
DESIGNED BY	D. Fisher	DATE	2-79
CHECKED BY	M.E.W.	DATE	2-79
APPROVED BY	C.V.	DATE	3-79
SCALE	none	SIZE	8 1/2" x 11"
ORIGINAL NO.	N78-16	COPY NO.	3
Smith & Loveless, Inc.		870196	
WET WELL MOUNTED PUMP LIFT STA. - MOBEL "S" 4" PIPING - 4' 5" 8" DIA. WELL			

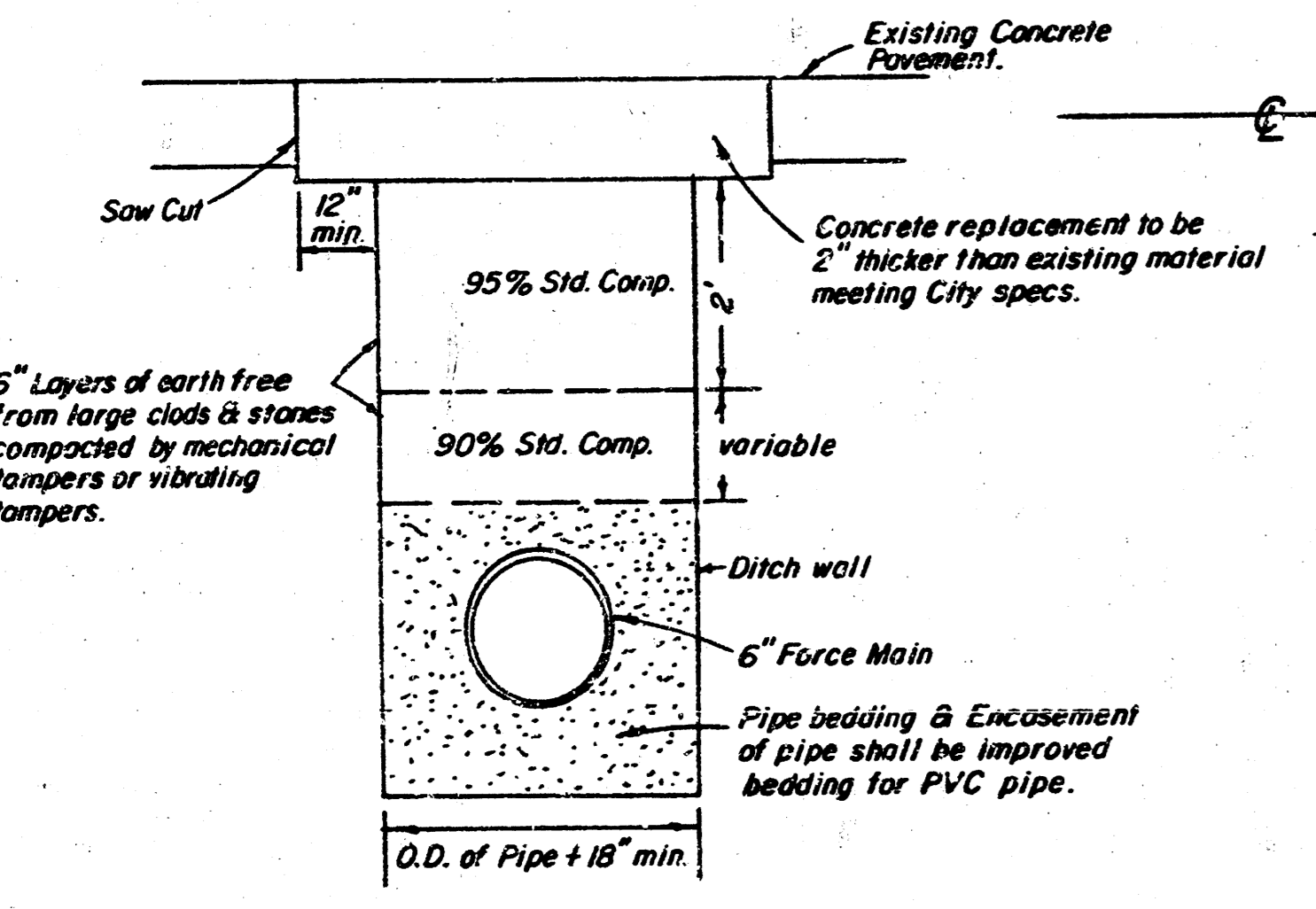
City of Wichita Sta. Ring 4.
Cover Top 97.12



SECTIONAL ELEVATION
AIR RELEASE MANHOLE
NO SCALE



THRUST BLOCK DETAIL
NO SCALE

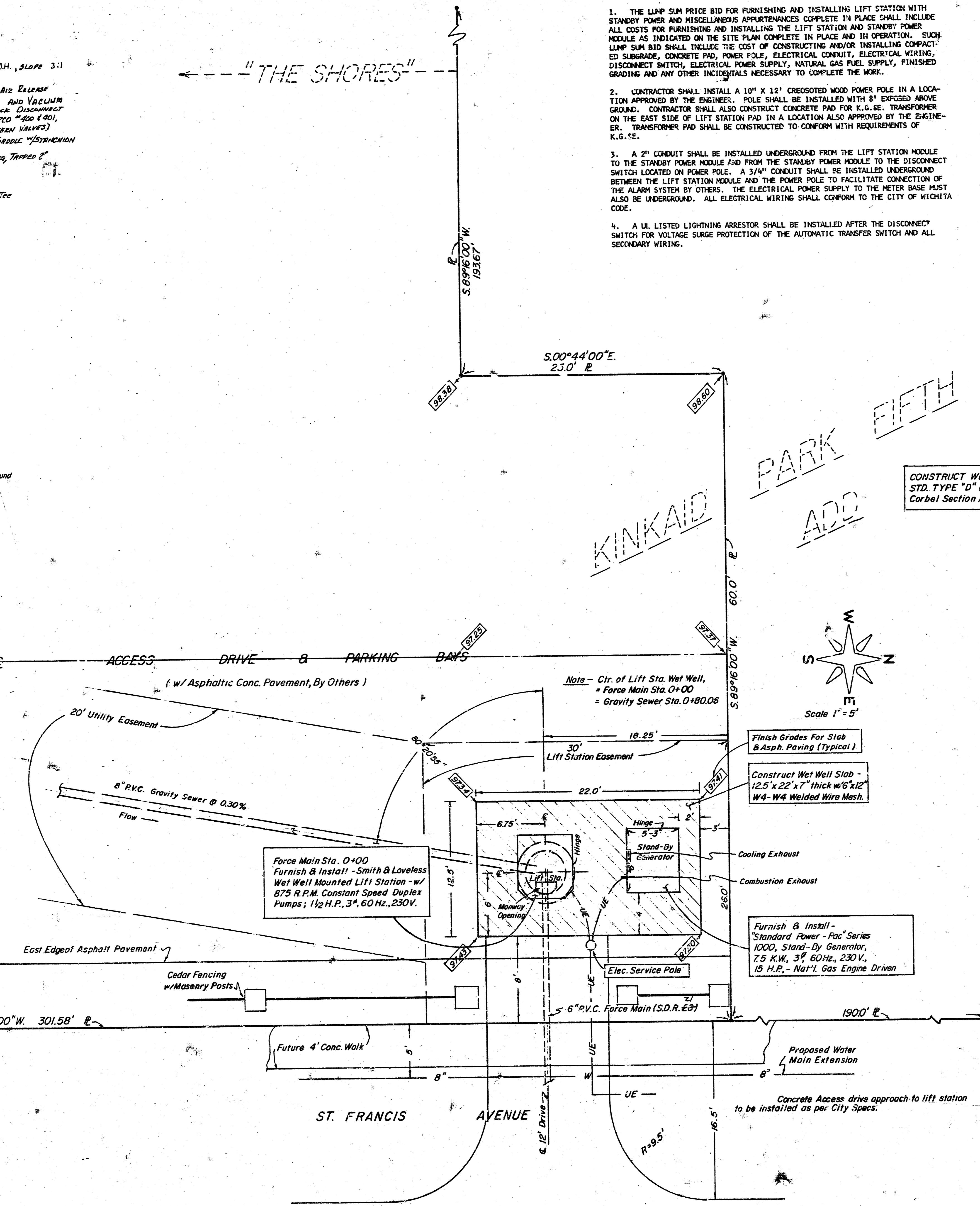


PAVEMENT REPLACEMENT DETAIL
NO SCALE

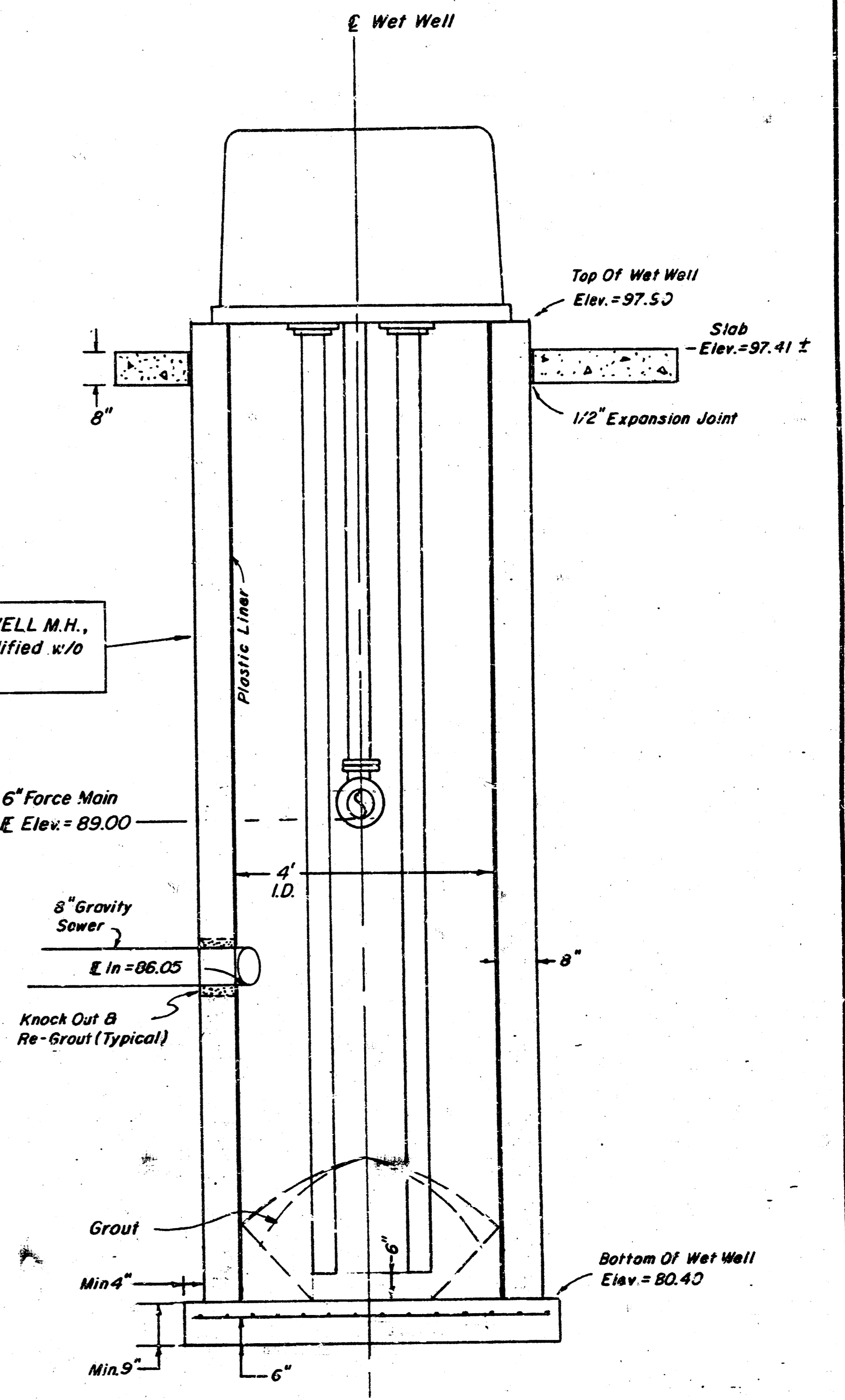
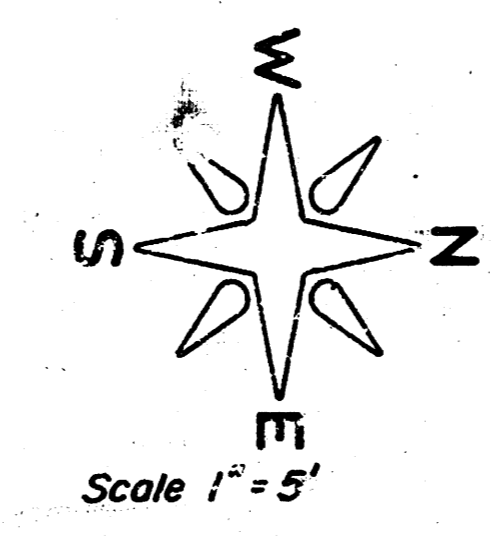
NOTES:

1. THE LUMP SUM PRICE BID FOR FURNISHING AND INSTALLING LIFT STATION WITH STANDBY POWER AND MISCELLANEOUS APPURTENANCES COMPLETE IN PLACE SHALL INCLUDE ALL COSTS FOR FURNISHING AND INSTALLING THE LIFT STATION AND STANDBY POWER MODULE AS INDICATED ON THE SITE PLAN COMPLETE IN PLACE AND IN OPERATION. SUCH LUMP SUM BID SHALL INCLUDE THE COST OF CONSTRUCTING AND/OR INSTALLING COMPACTED SUBGRADE, CONCRETE PAD, POWER POLE, ELECTRICAL CONDUIT, ELECTRICAL WIRING, DISCONNECT SWITCH, ELECTRICAL POWER SUPPLY, NATURAL GAS FUEL SUPPLY, FINISHED GRADING AND ANY OTHER INCIDENTALS NECESSARY TO COMPLETE THE WORK.
2. CONTRACTOR SHALL INSTALL A 10' X 12' CREOSOTED WOOD POWER POLE IN A LOCATION APPROVED BY THE ENGINEER. POLE SHALL BE INSTALLED WITH 8' EXPOSED ABOVE GROUND. CONTRACTOR SHALL ALSO CONSTRUCT CONCRETE PAD FOR K.G.E.E. TRANSFORMER ON THE EAST SIDE OF LIFT STATION PAD IN A LOCATION ALSO APPROVED BY THE ENGINEER. TRANSFORMER PAD SHALL BE CONSTRUCTED TO CONFORM WITH REQUIREMENTS OF K.G.E.E.
3. A 2" CONDUIT SHALL BE INSTALLED UNDERGROUND FROM THE LIFT STATION MODULE TO THE STANDBY POWER MODULE AND FROM THE STANDBY POWER MODULE TO THE DISCONNECT SWITCH LOCATED ON POWER POLE. A 3/4" CONDUIT SHALL BE INSTALLED UNDERGROUND BETWEEN THE LIFT STATION MODULE AND THE POWER POLE TO FACILITATE CONNECTION OF THE ALARM SYSTEM BY OTHERS. THE ELECTRICAL POWER SUPPLY TO THE METER BASE MUST ALSO BE UNDERGROUND. ALL ELECTRICAL WIRING SHALL CONFORM TO THE CITY OF WICHITA CODE.
4. A UL LISTED LIGHTNING ARRESTOR SHALL BE INSTALLED AFTER THE DISCONNECT SWITCH FOR VOLTAGE SURGE PROTECTION OF THE AUTOMATIC TRANSFER SWITCH AND ALL SECONDARY WIRING.

"THE SHORES"

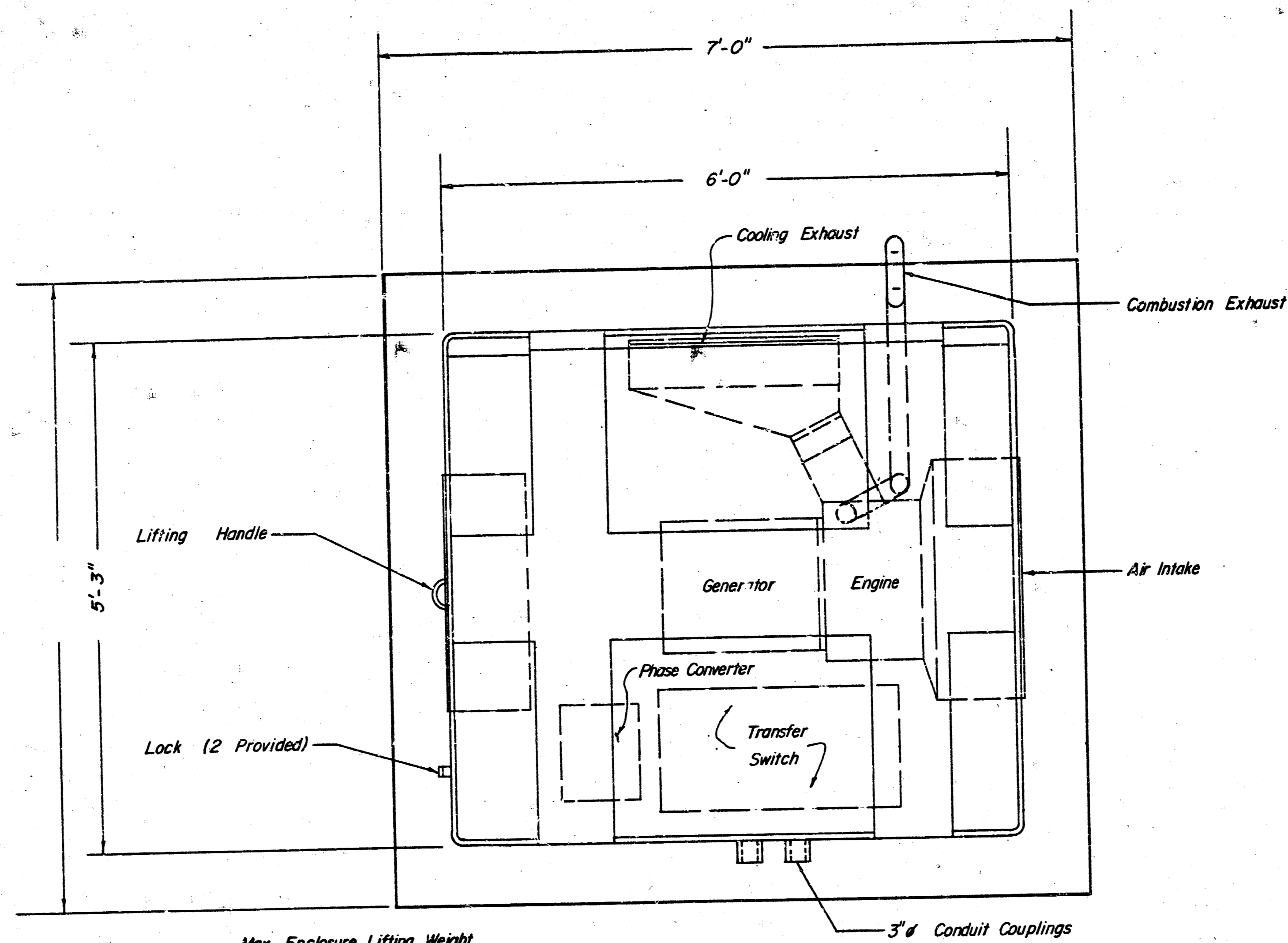
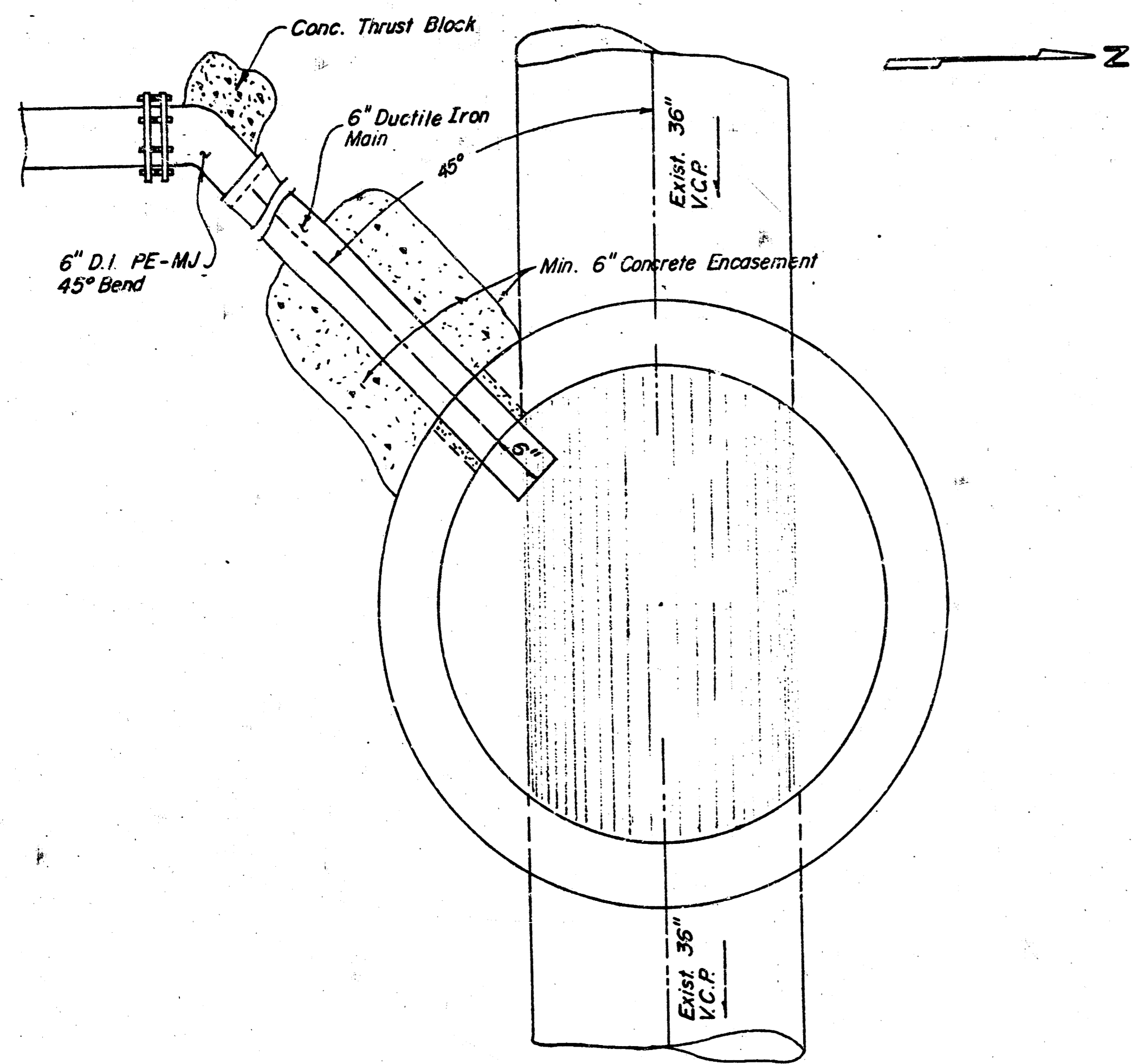


PARK FIFTH
ADD
KINKAID



LIFT STATION
SECTIONAL ELEVATION

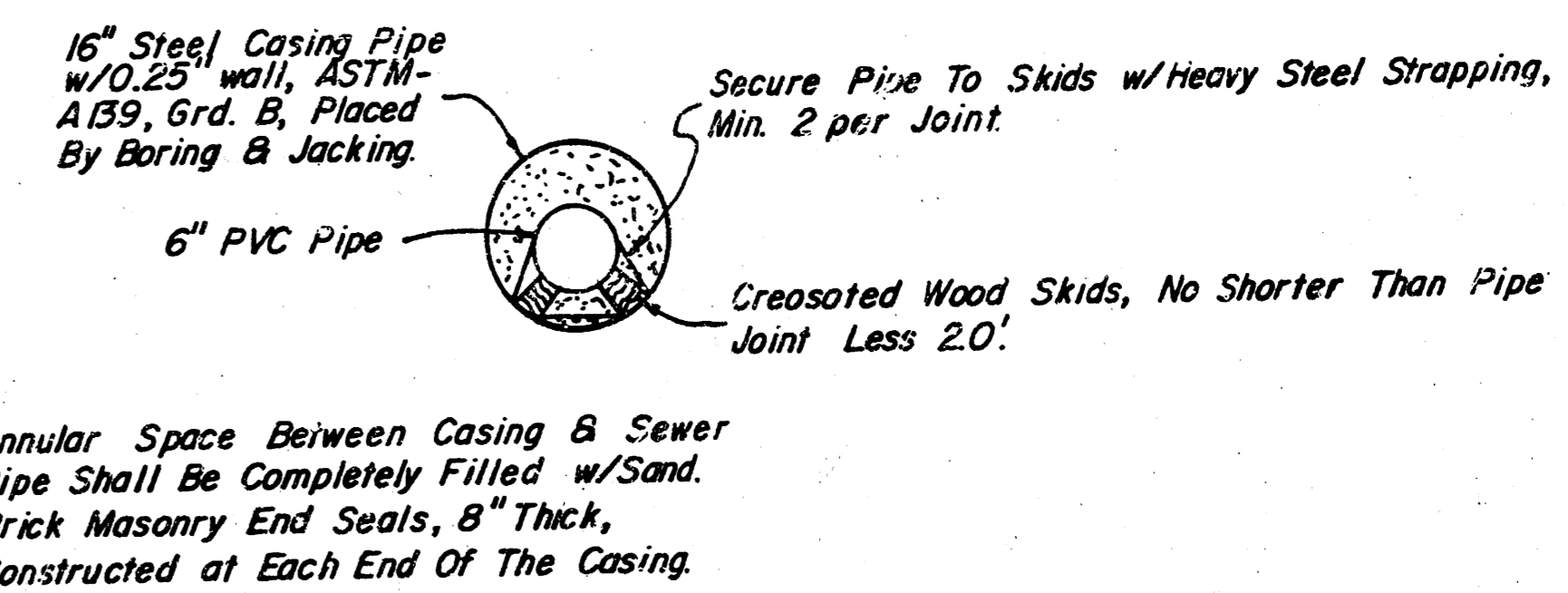
SITE PLAN & DETAILS
FORCE MAIN AND LIFT STATION
FOR
THE SHORES-KINKAID PARK FIFTH
ADDITION TO WICHITA, KANSAS
MOEHRING & ASSOCIATES
CONSULTING ENGINEERS
WICHITA 6/17



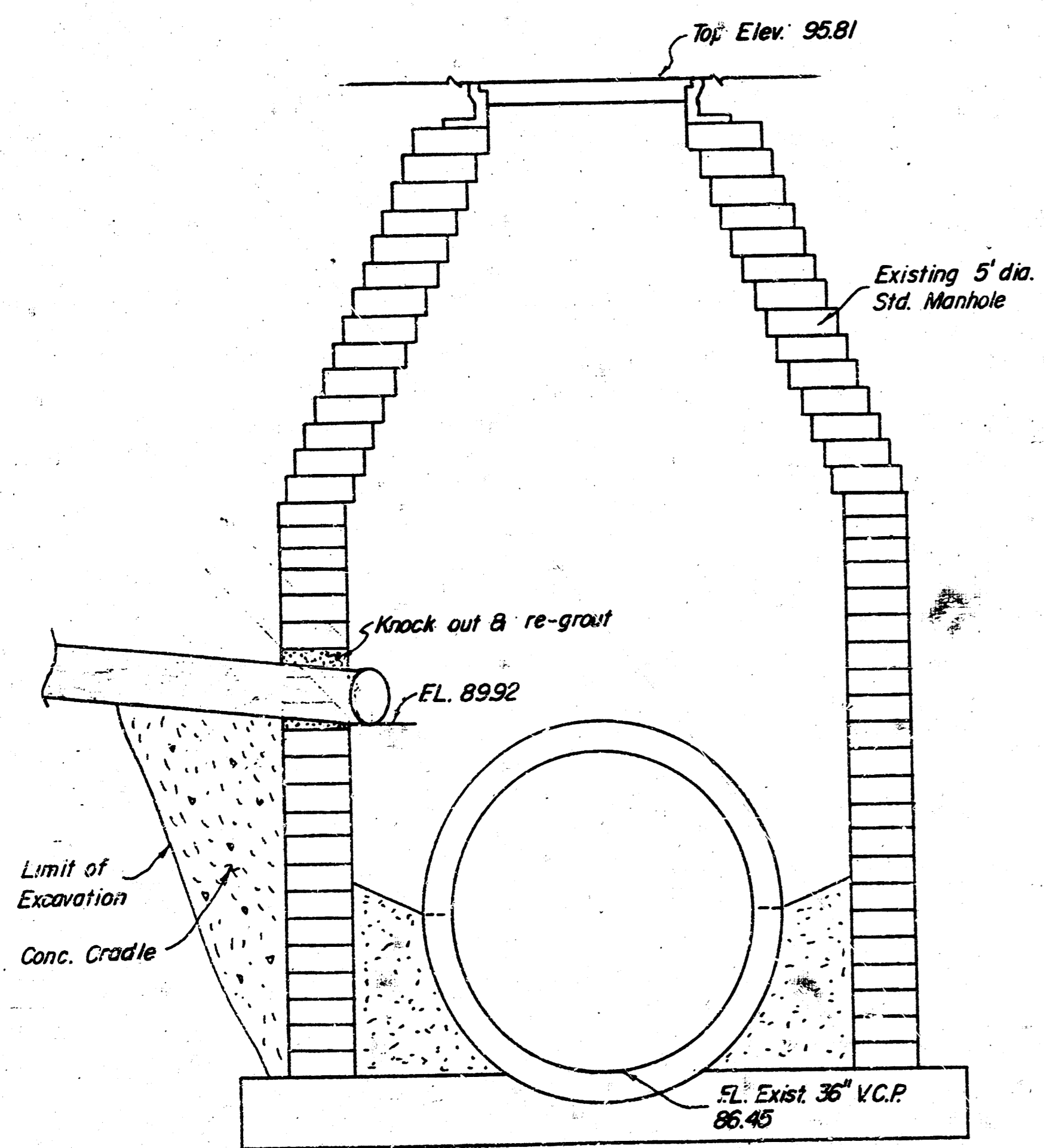
Max. Enclosure Lifting Weight
Not To Exceed 40 lbs. At
Lifting Handle.

TOP VIEW

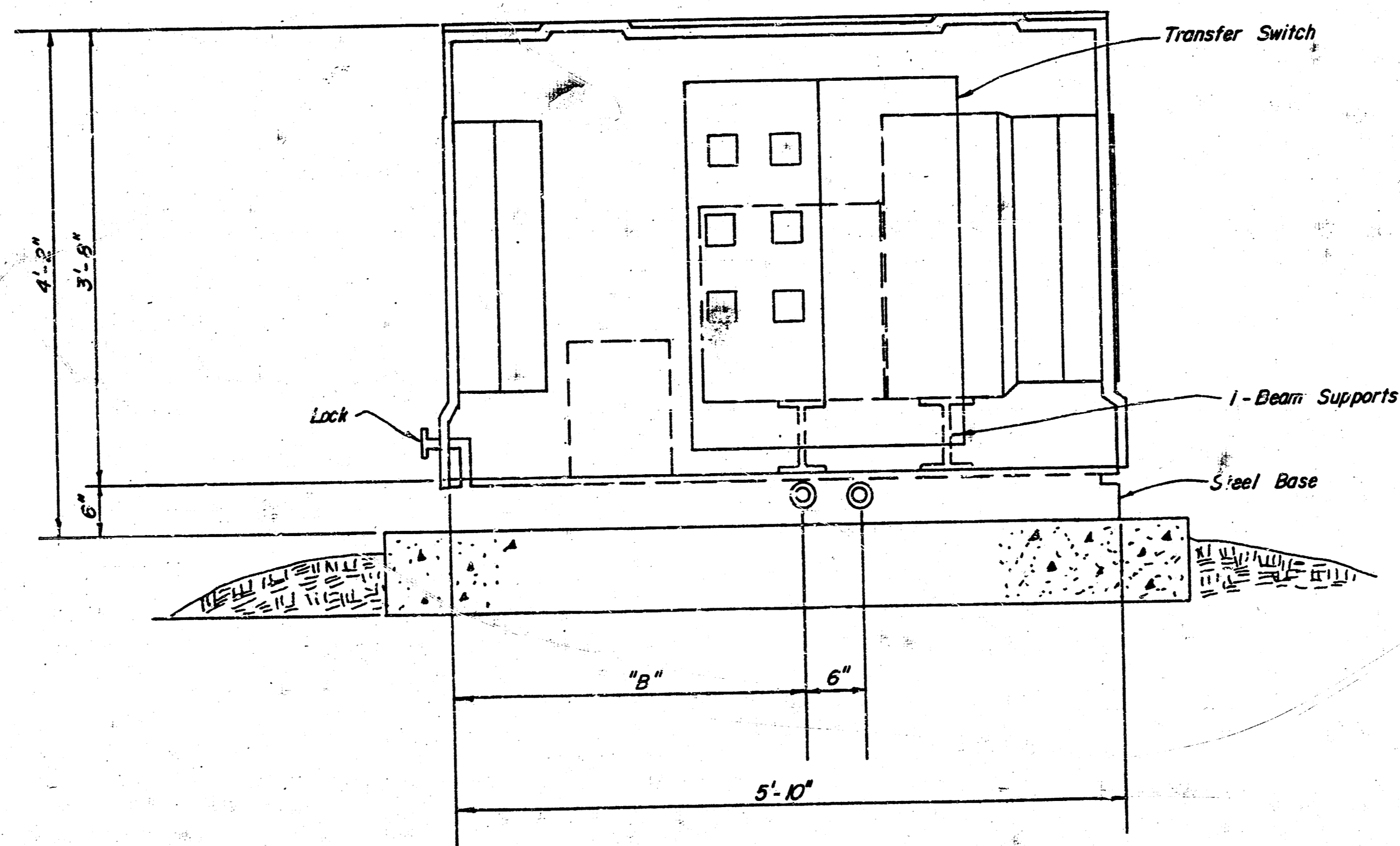
STAN-BY GENERATOR DETAILS
STANNARD POWER EQUIPMENT CO.
SERIES 1000



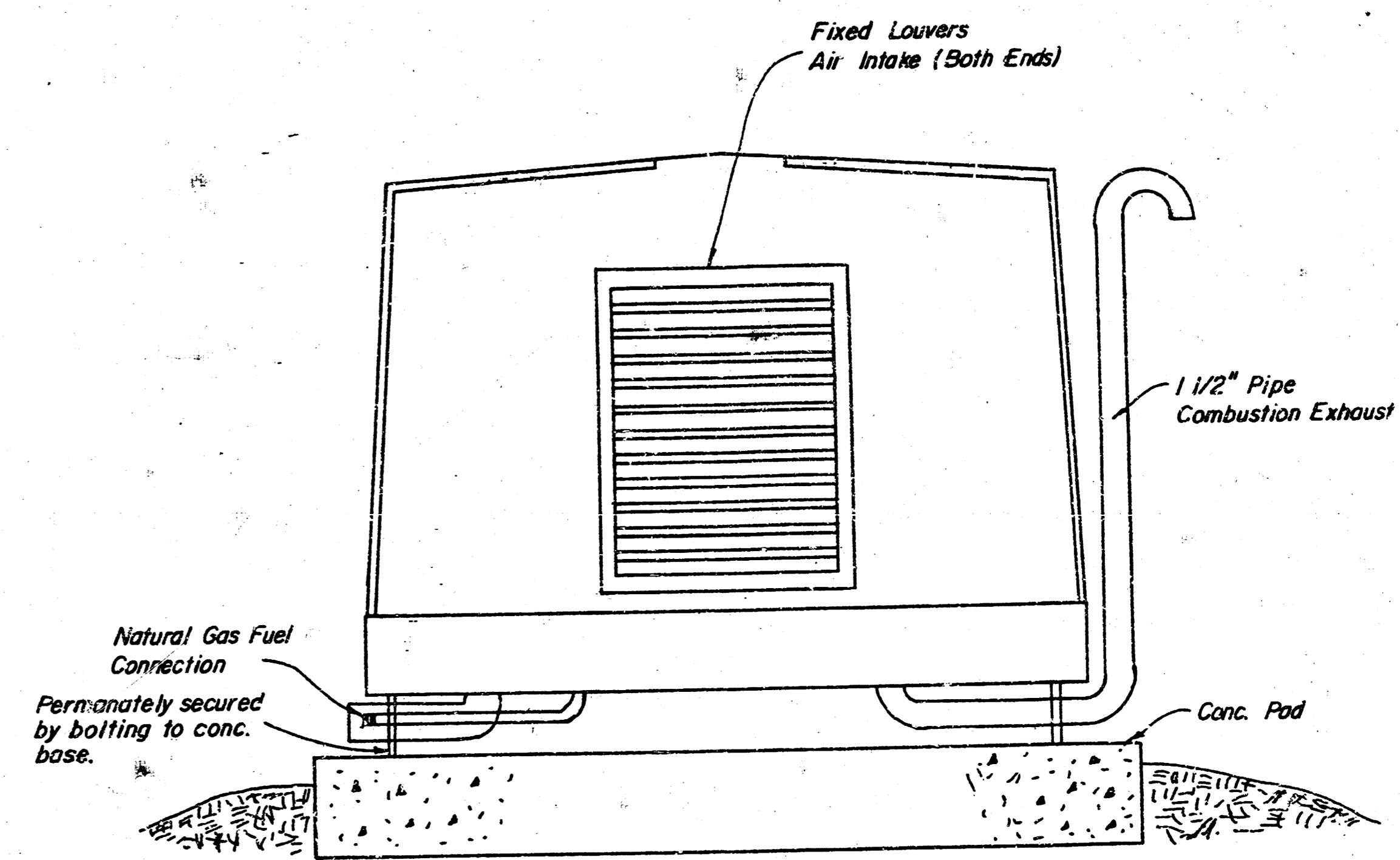
TYPICAL CASING SECTION



MANHOLE TAP DETAIL
3/4" = 1'



SECTIONAL ELEVATION



END VIEW