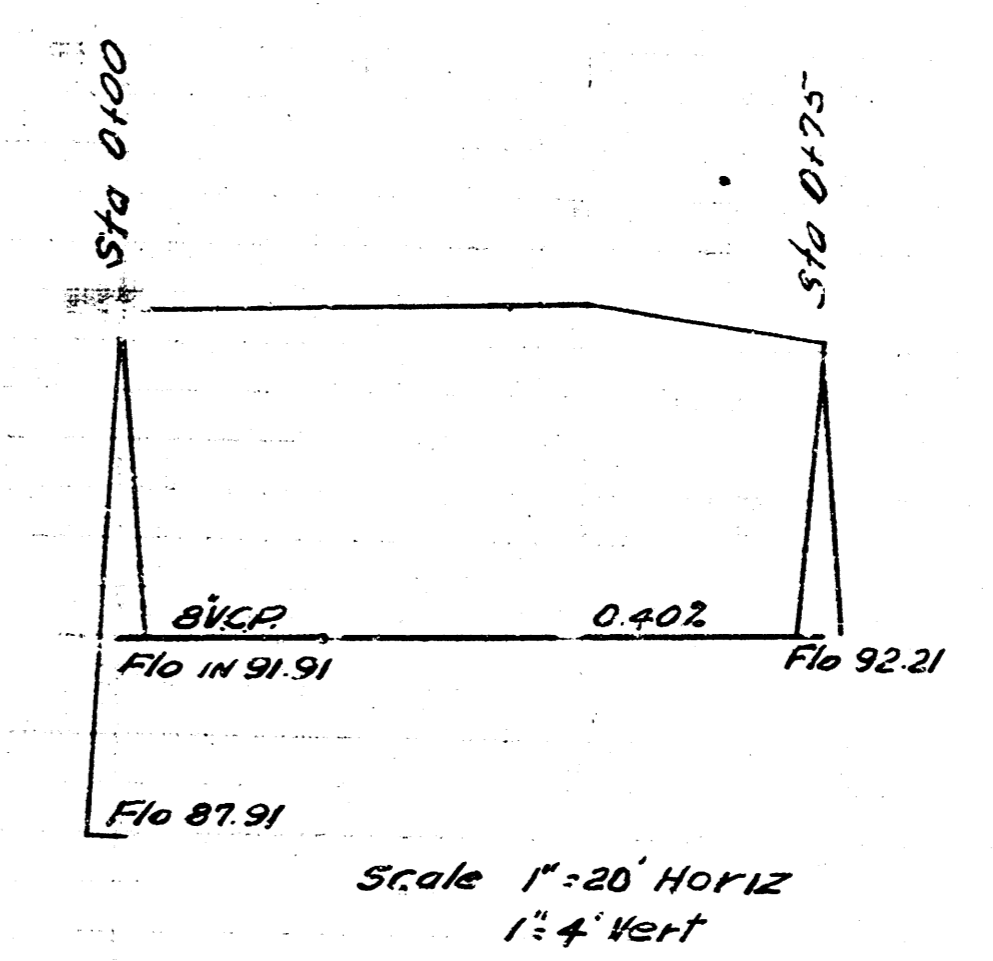
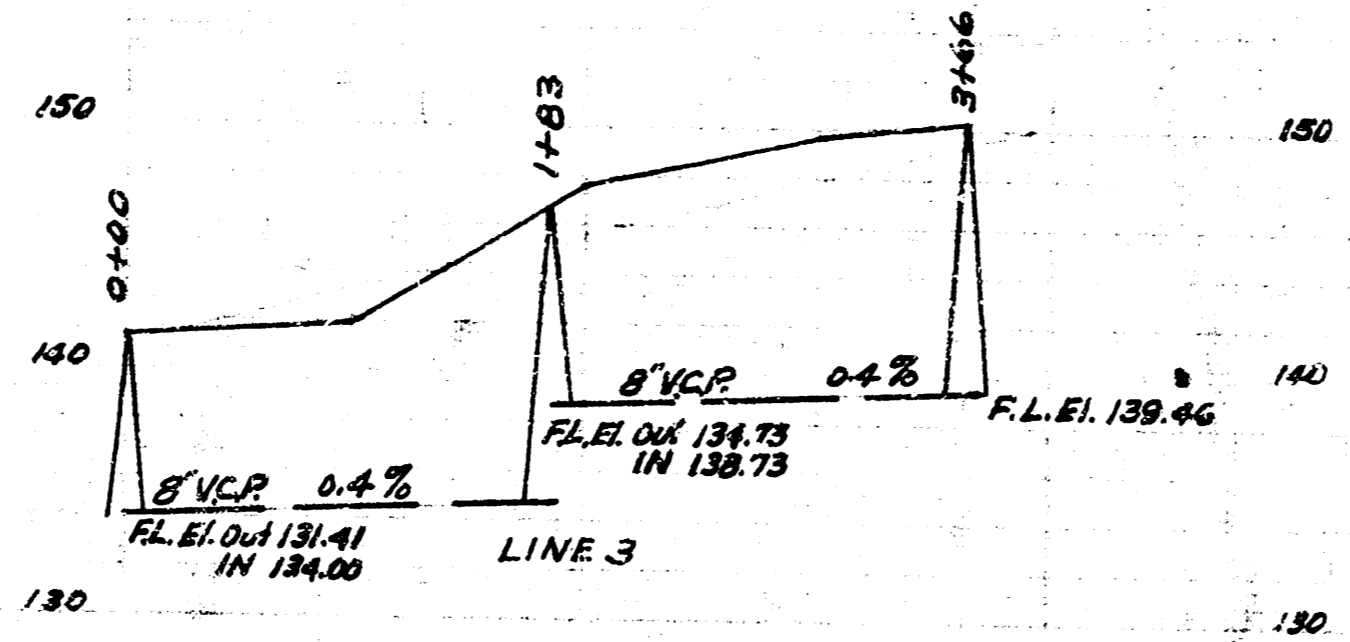
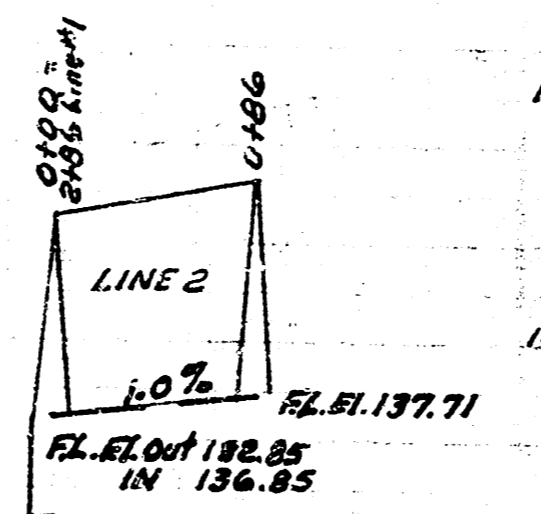
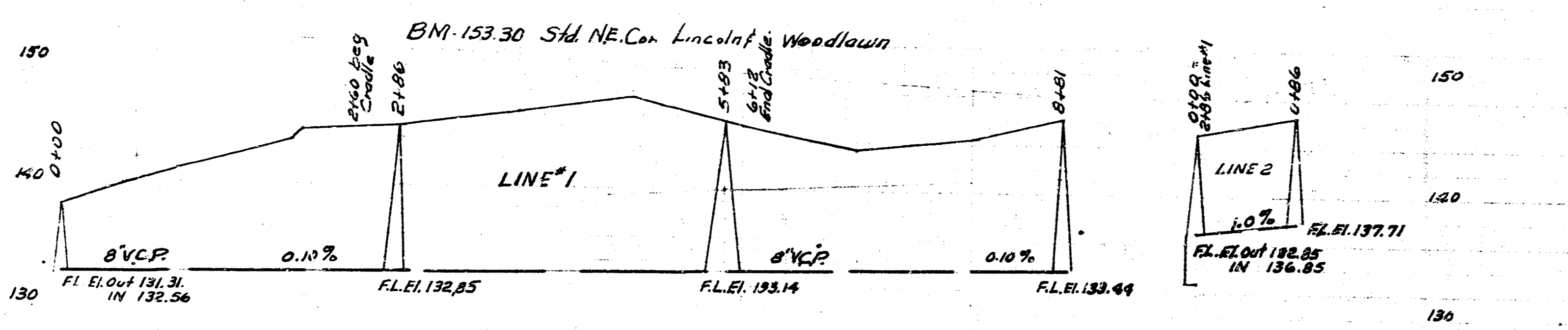
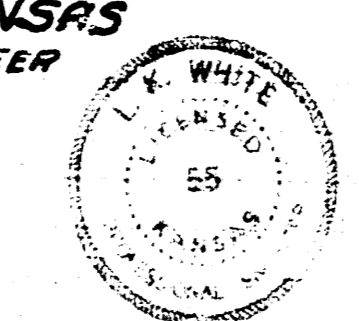


BM. 98.53 Head 20" spike E.S. Cottonwood
24' NE of SW cor. Baulah Park NE Greenway Blvd.

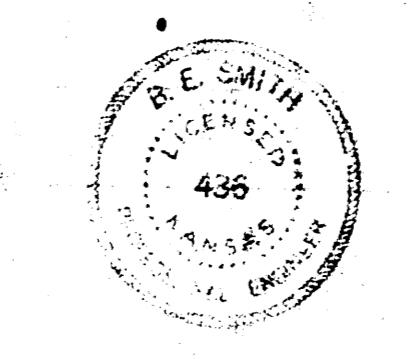
Date
Drawn by
Checked by
Book No.



LAT. 8, SUB. 3, W15,
CITY OF WICHITA KANSAS
L. WHITE CITY ENGINEER
Proj No. C-22-15



Date
Drawn by
Checked by
Book No.



J.O. SMITH PRIVATE SEWER
CITY OF WICHITA KANSAS
L. WHITE CITY ENGINEER