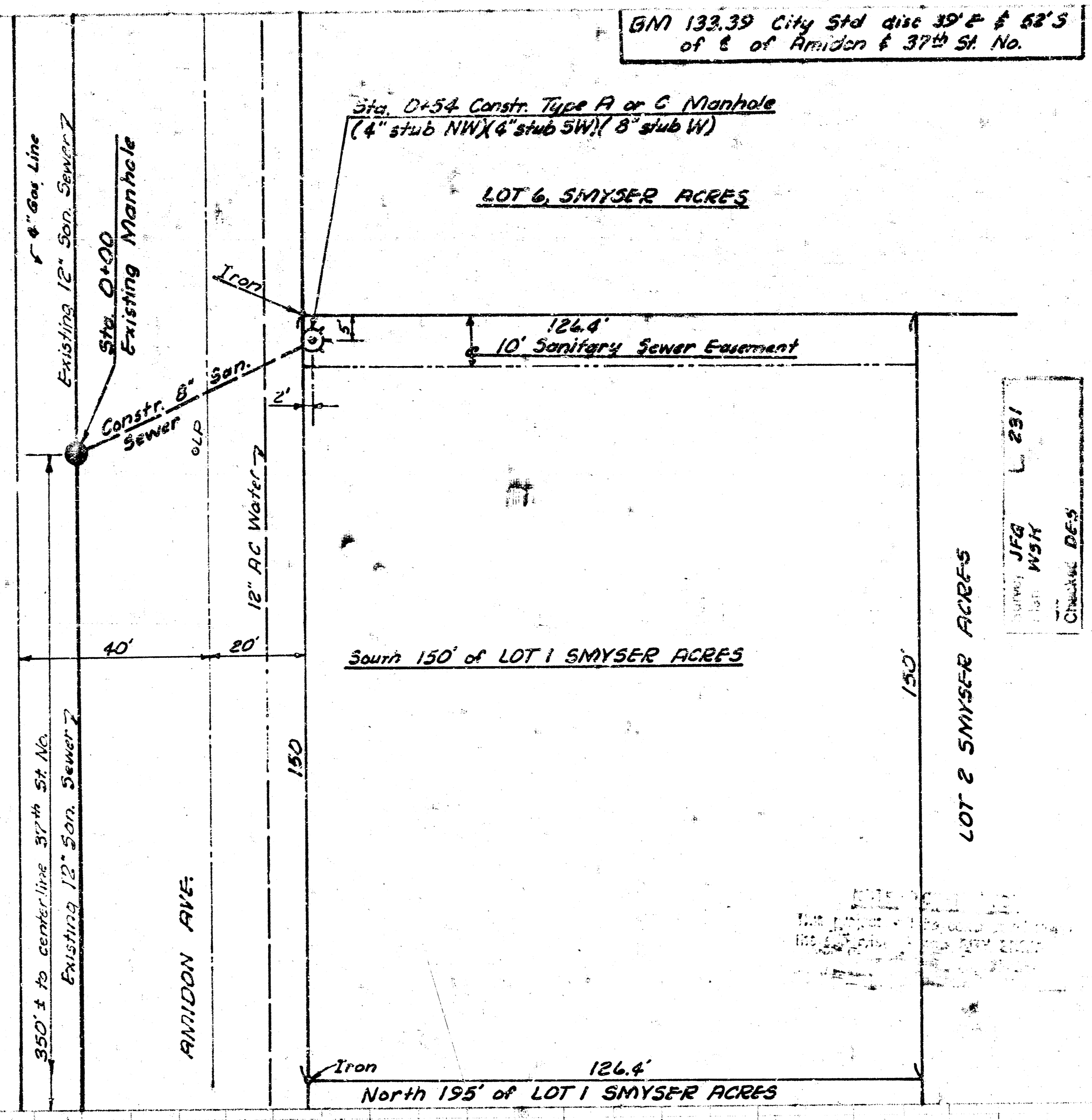
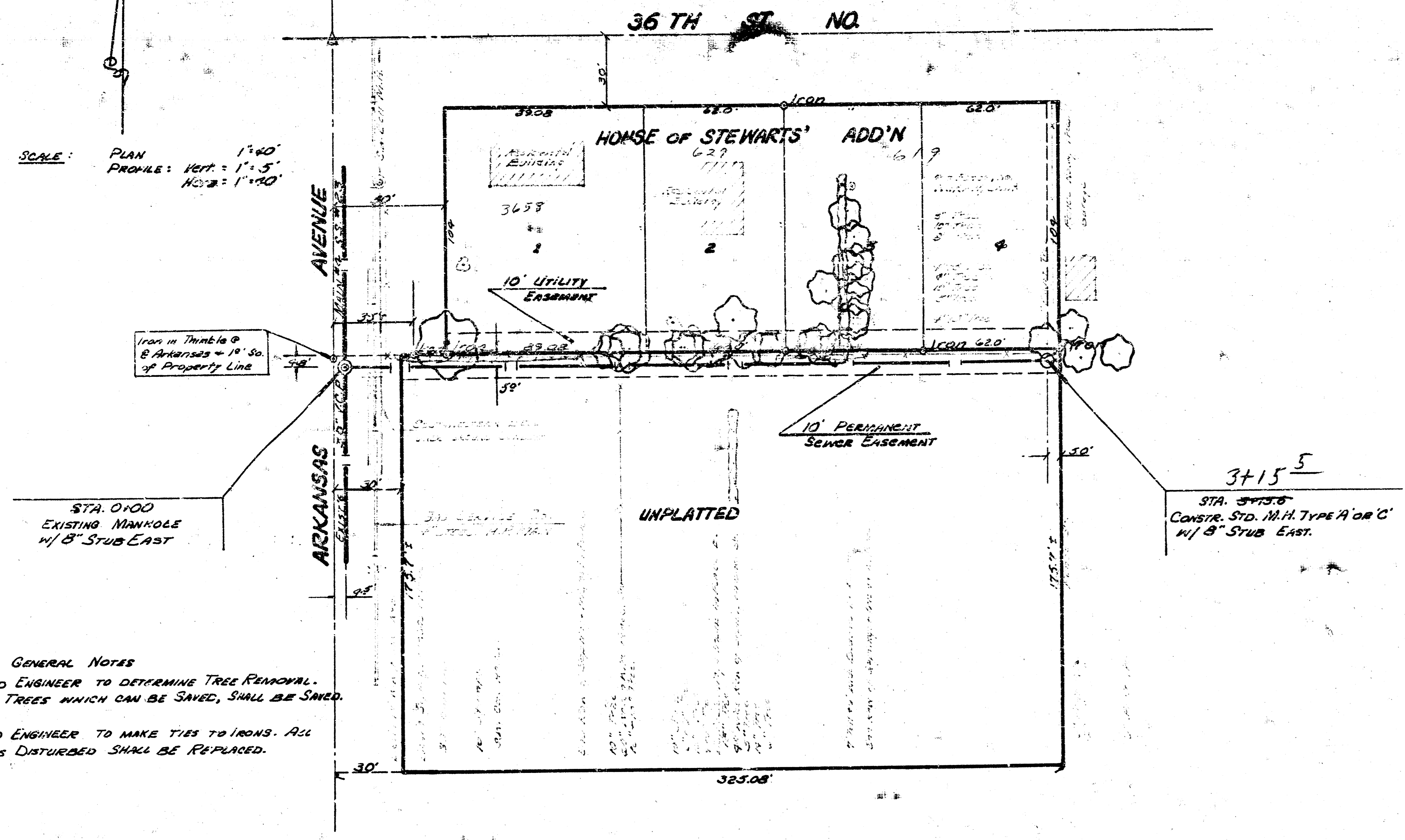


B.M. 132.09 - City Std. 34' E. of E of Arkansas Ave. + 2' So. of S.L. 37th St. No.
 B.M. 130.28 - R.R. Spike. N. Face P.P., N. Side Arkansas Ave. 115' + So. of S.L. 36th St. No.

G/M 133.39 City Std disc 39' E + 62' S of E of Aradon + 37th St. No.

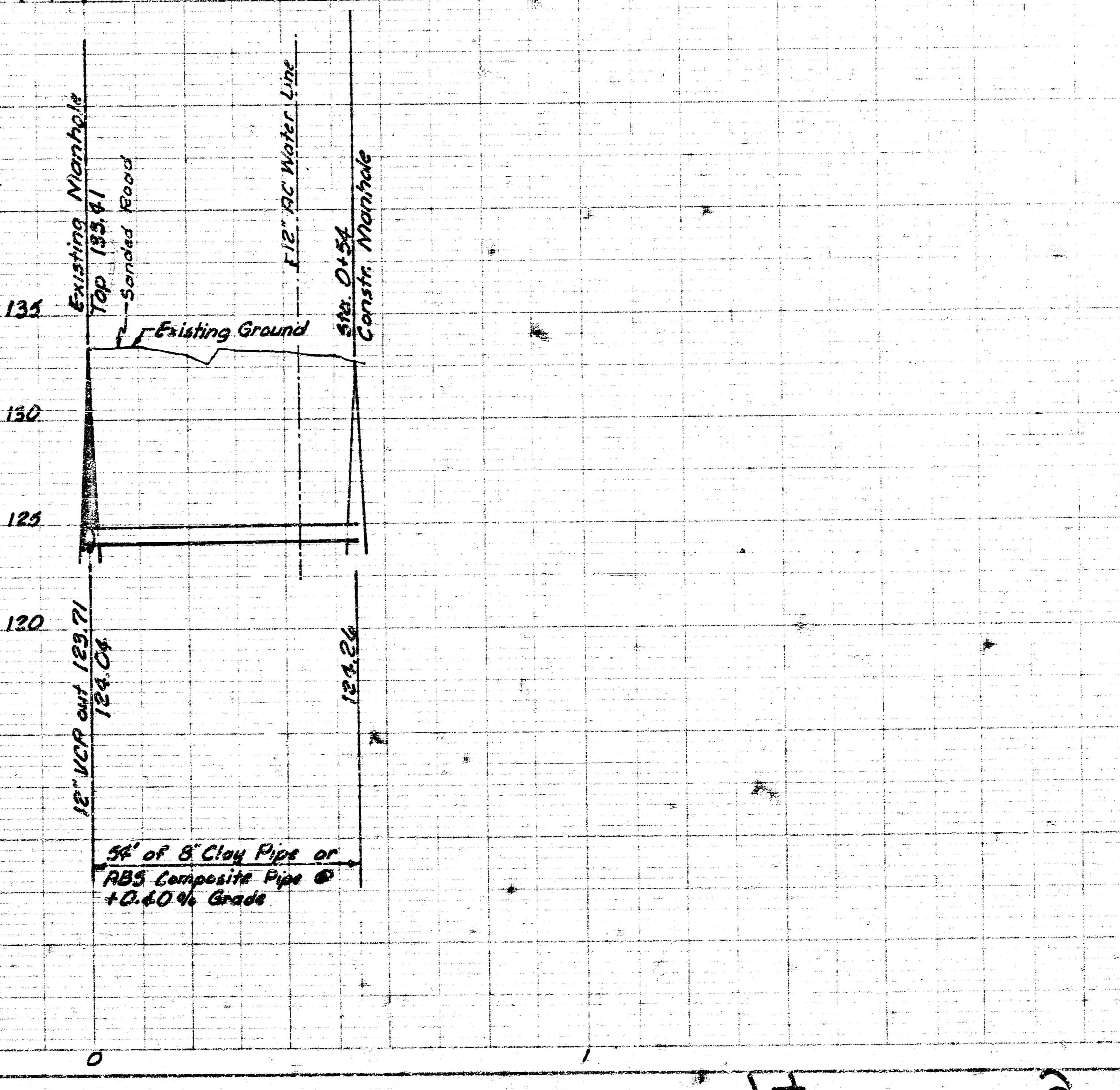
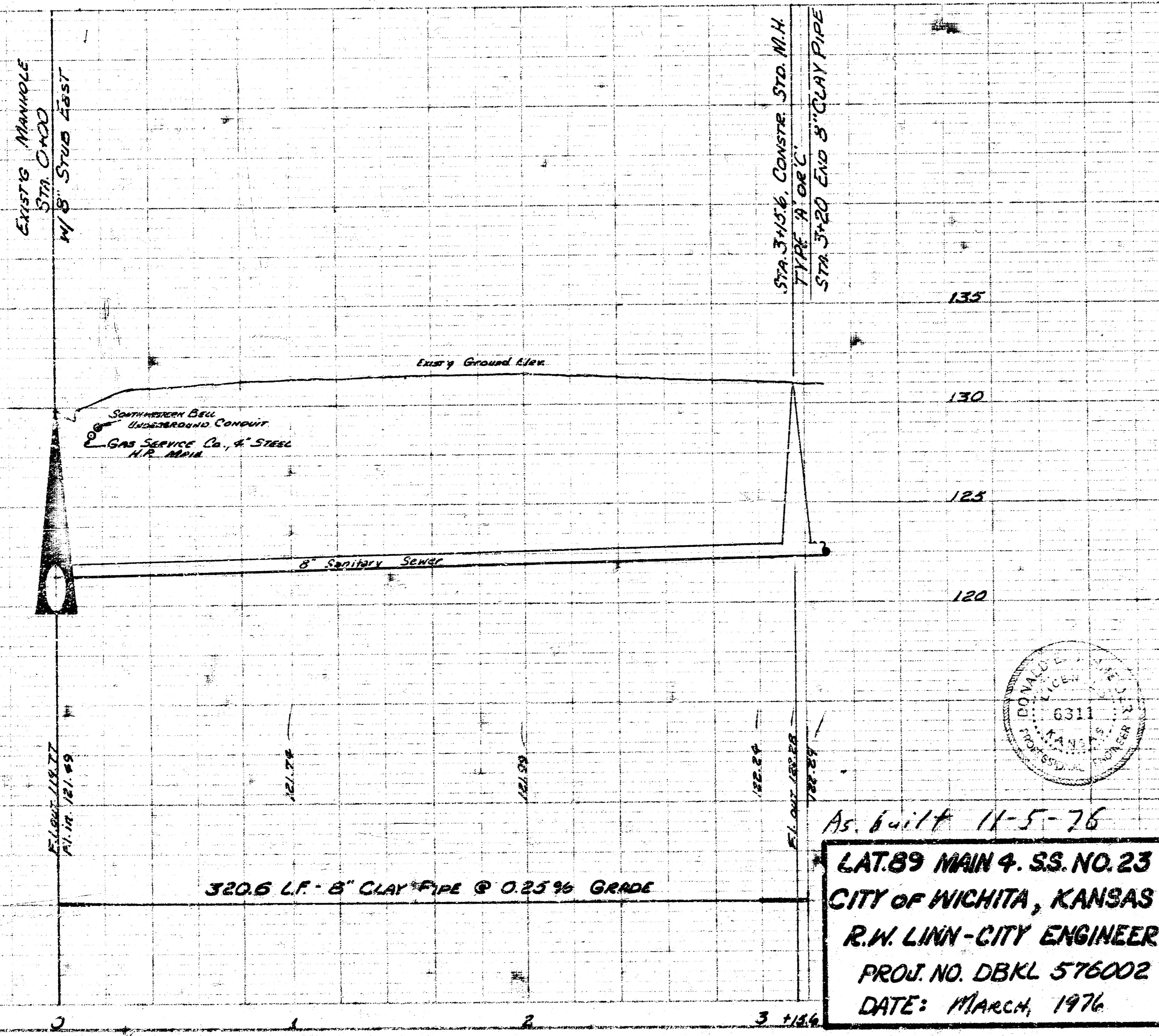
SCALE: PLAN 1"=40'
 PROFILE: VERT. 1"=5'
 HOR. 1"=50'



SCALE: Hor. 1"=20'
 Ver. 1"=5'

NOTE TO CONTRACTOR
 This project shall be constructed under the supervision of the CITY ENGINEER and conforming to the SPECIFICATIONS of the CITY OF WICHITA. The CONTRACTOR shall reimburse the CITY for the cost of all engineering, field and inspection.

GENERAL NOTES
 FIELD ENGINEER TO DETERMINE TREE REMOVAL. ALL TREES WHICH CAN BE SAVED, SHALL BE SAVED.
 FIELD ENGINEER TO MAKE TIES TO IRONS. ALL IRONS DISTURBED SHALL BE REPLACED.



As built 11-5-76
 LAT. 89 MAIN 4. S.S. NO. 23
 CITY OF WICHITA, KANSAS
 R.W. LINN - CITY ENGINEER
 PROJ. NO. DBKL 576002
 DATE: MARCH, 1976

PRIVATE PROJECT FOR SANITARY SEWER EXTENSION
 TO SERVE THE SOUTH 150' OF LOT 1, SMYSER ACRES @ 37 ST. NO. & ARADON
 CITY OF WICHITA, KANSAS
 R.W. LINN, CITY ENGINEER
 PROJECT NO. DBKN 706030
 DATE: _____ Sheet 1 of 1