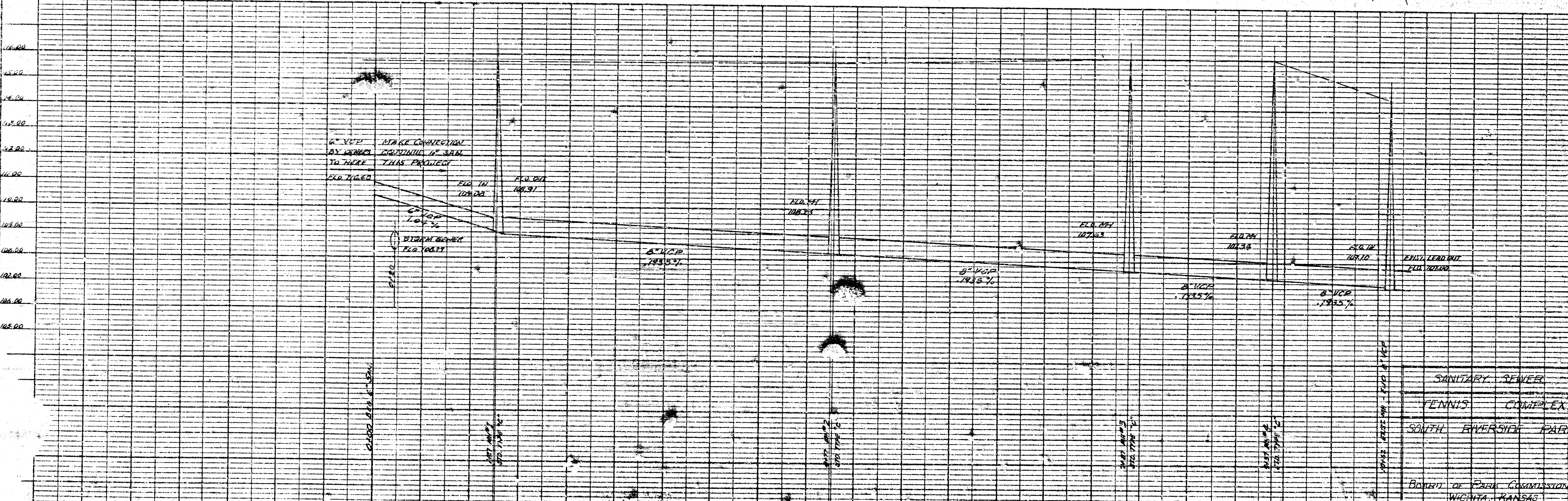
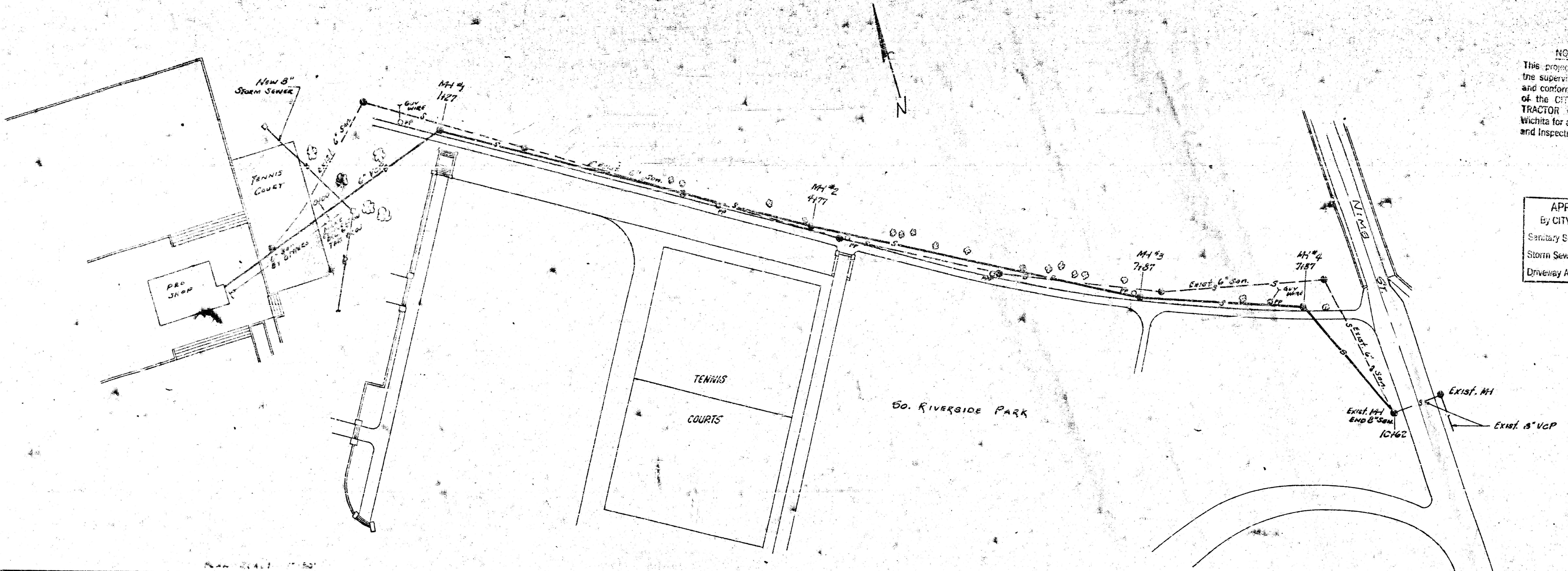


NOTE TO CONTRACTOR
 This project will be constructed under the supervision of the CITY ENGINEER and conforming to the SPECIFICATIONS of the CITY OF WICHITA. The CONTRACTOR will reimburse the City of Wichita for all cost of Engineering, Plans, and Inspection.

1-21-75

APPROVED AS NOTED
 By CITY ENGINEER OF WICHITA
 Sanitary Sewers D. E. S.
 Storm Sewers _____
 Driveway Approaches _____



SANITARY SEWER
 TENNIS COMPLEX
 SOUTH RIVERSIDE PARK
 BOARD OF PARK COMMISSIONERS
 WICHITA, KANSAS