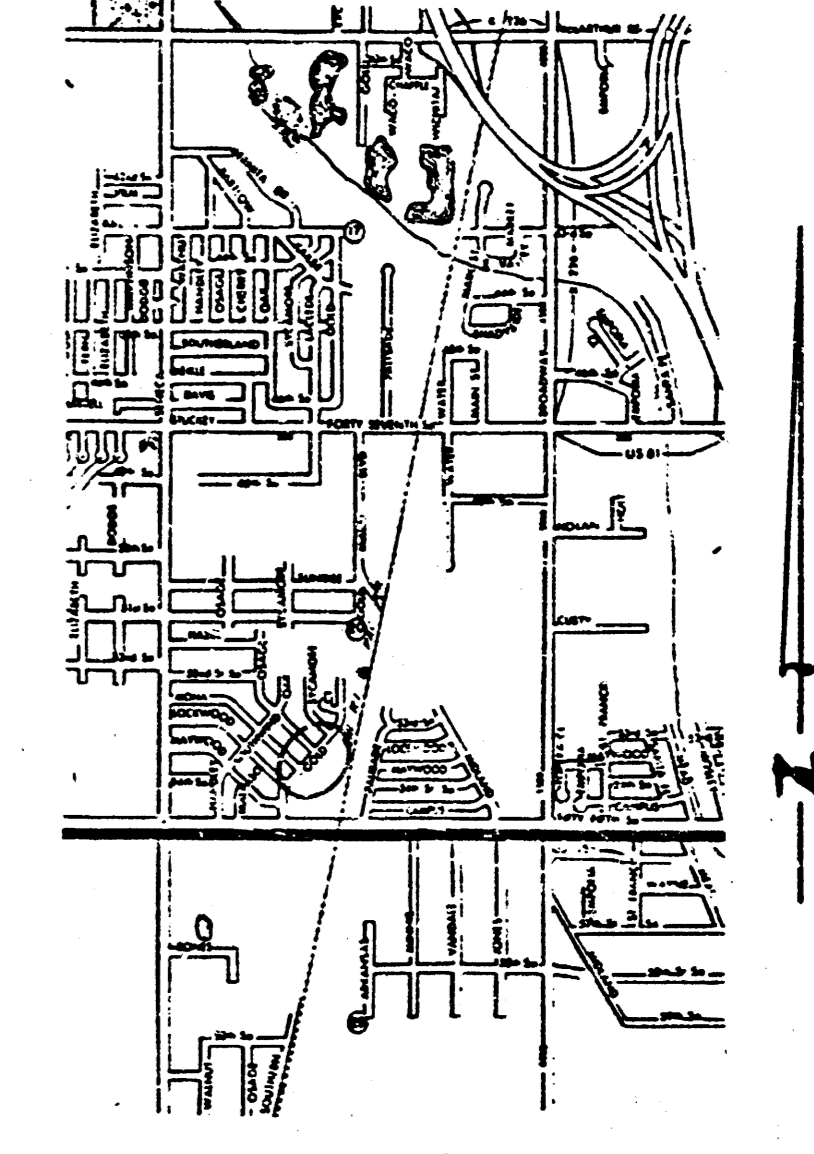
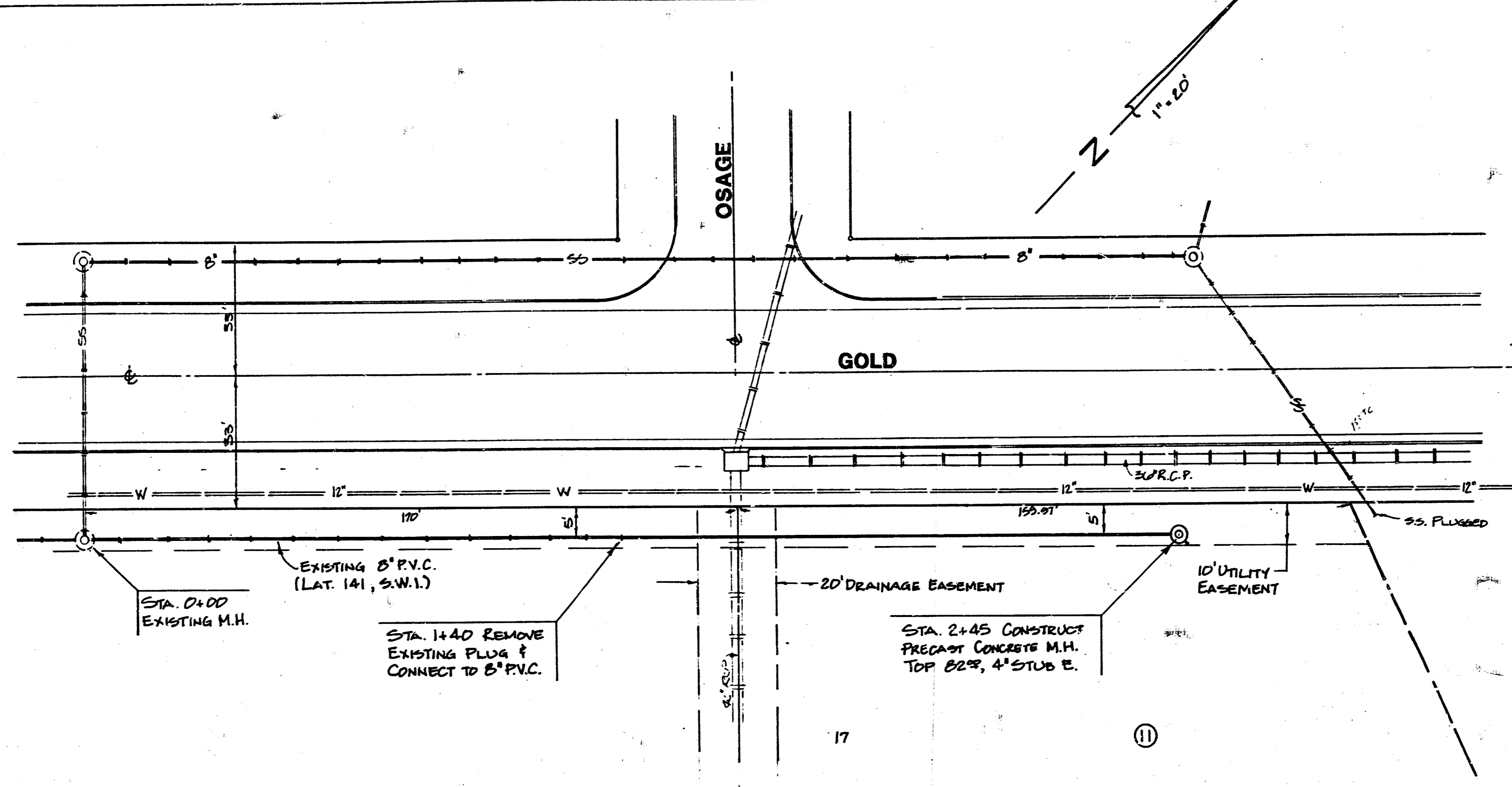


BENCH MARKS:  
CITY OF WICHITA DIST.  
45' N. & 45' W. OF 1/4  
COR. @ 55TH & GOLD,  
ELEV. 81.36

1/4" IN BOLT OF F.H. @  
W. COR. SYCAMORE &  
GOLD, ELEV. 82.45



APPROVAL AS NOTED  
By CITY ENGINEER OF WICHITA

Sanitary Sewers *CP&E/CLB*

Storm Sewers \_\_\_\_\_

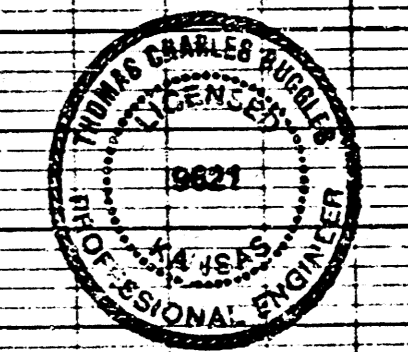
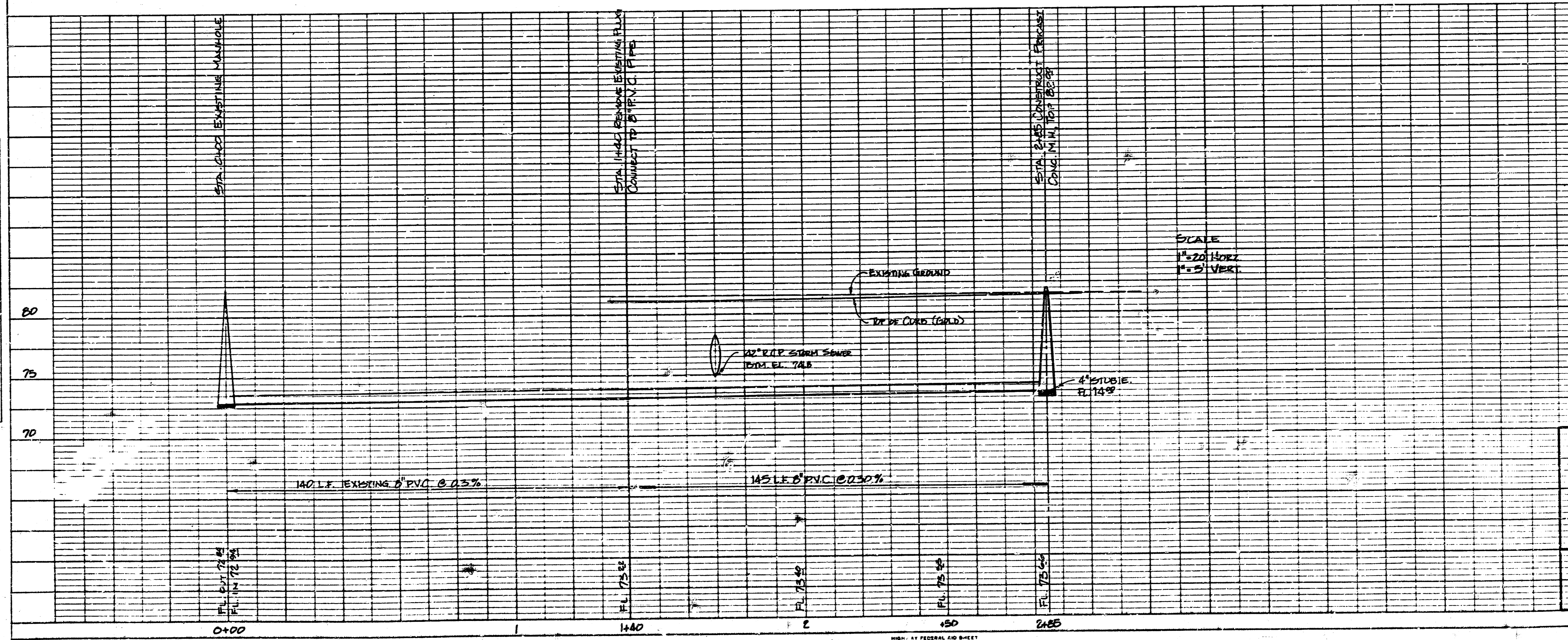
Driveway Approaches \_\_\_\_\_

NOTE TO CONTRACTOR

This project will be constructed under the supervision of the CITY ENGINEER and conforming to the SPECIFICATIONS of the CITY OF WICHITA. The CONTRACTOR will be the City of Wichita for all costs of plan review, inspection and footing per contract.

PLAN	DATE
ISSUED	
REVISED	
NOTE BOOK	
BY	
DATE	

PROFILE	DATE
ISSUED	
REVISED	
NOTE BOOK	
BY	
DATE	



PRIVATE SANITARY SEWER EXTENSION  
TO SERVE PART OF LOT 17, BLOCK 11,  
SOUTH SENECA GARDENS FOURTH ADD.  
CITY OF WICHITA, KANSAS

Proj. no. 468-76-245-80001-000-000-018

**BAUGHMAN COMPANY, P.A.**  
SURVEYING & ENGINEERING  
214/242-7771 • 330 LAURA • WICHITA, KANSAS 67211

**GENERAL NOTES**

CONCRETE USED IN CONCRETE BASES SHALL CONFORM TO THE REQUIREMENTS OF CONCRETE FOR CONCRETE ; PAVEMENT CONSTRUCTION AS SPECIFIED IN THE CITY STANDARD PAVING SPECIFICATIONS USING CITY CONCRETE PAVEMENT MIX WITHOUT AIR ENTRAINING ADMIXTURE. MORTAR SHALL BE PLACED AROUND THE MANHOLE RING AS SHOWN ON THE DRAWINGS WHEN MANHOLES ARE CONSTRUCTED IN UNPAVED AREAS. ALL INSIDE SURFACES OF THE MANHOLE WALL WHICH WOULD BE EXPOSED TO SEWER GAS SHALL BE PROTECTED BY COATING SUCH SURFACES WITH TWO COATS OF SERIES 66 HI-BUILD EXPOLINE AS MANUFACTURED BY TENACOR OR APPROVED EQUAL. EACH COAT SHALL HAVE A DRY FILM THICKNESS OF BETWEEN 4 TO 6 MILS. SUCH COATING SHALL BE APPLIED IN ACCORDANCE WITH THE MANUFACTURER'S RECOMMENDATIONS.

REINFORCING STEEL SHALL BE INSTALLED IN THE MANHOLE BASE. REINFORCING STEEL SHALL CONSIST OF NO. 4 BARS PLACED ON 6" CENTERS IN BOTH DIRECTIONS. REINFORCING STEEL SHALL BE PLACED 3" ABOVE THE BOTTOM OF THE MANHOLE BASE.

PIPES INSTALLED WITHIN THE EXCAVATION MADE FOR THE MANHOLE SHALL BE ENCASED WITH CONCRETE TO THE LIMITS OF THE MANHOLE EXCAVATION. WHEN CLAY PIPE IS USED, THE ENCASEMENT SHALL EXTEND TO THE FIRST JOINT OUTSIDE THE MANHOLE. ENCASEMENT SHALL BE TERMINATED AT THE CLAY PIPE JOINT IN A MANNER WHICH WILL MAINTAIN THE FLEXIBILITY OF THE JOINT. COST OF ENCASEMENT WITHIN MANHOLE EXCAVATION OF TO CLAY PIPE JOINTS ADJACENT TO MANHOLE SHALL BE INCLUDED IN THE UNIT PRICE BID FOR THE MANHOLE.

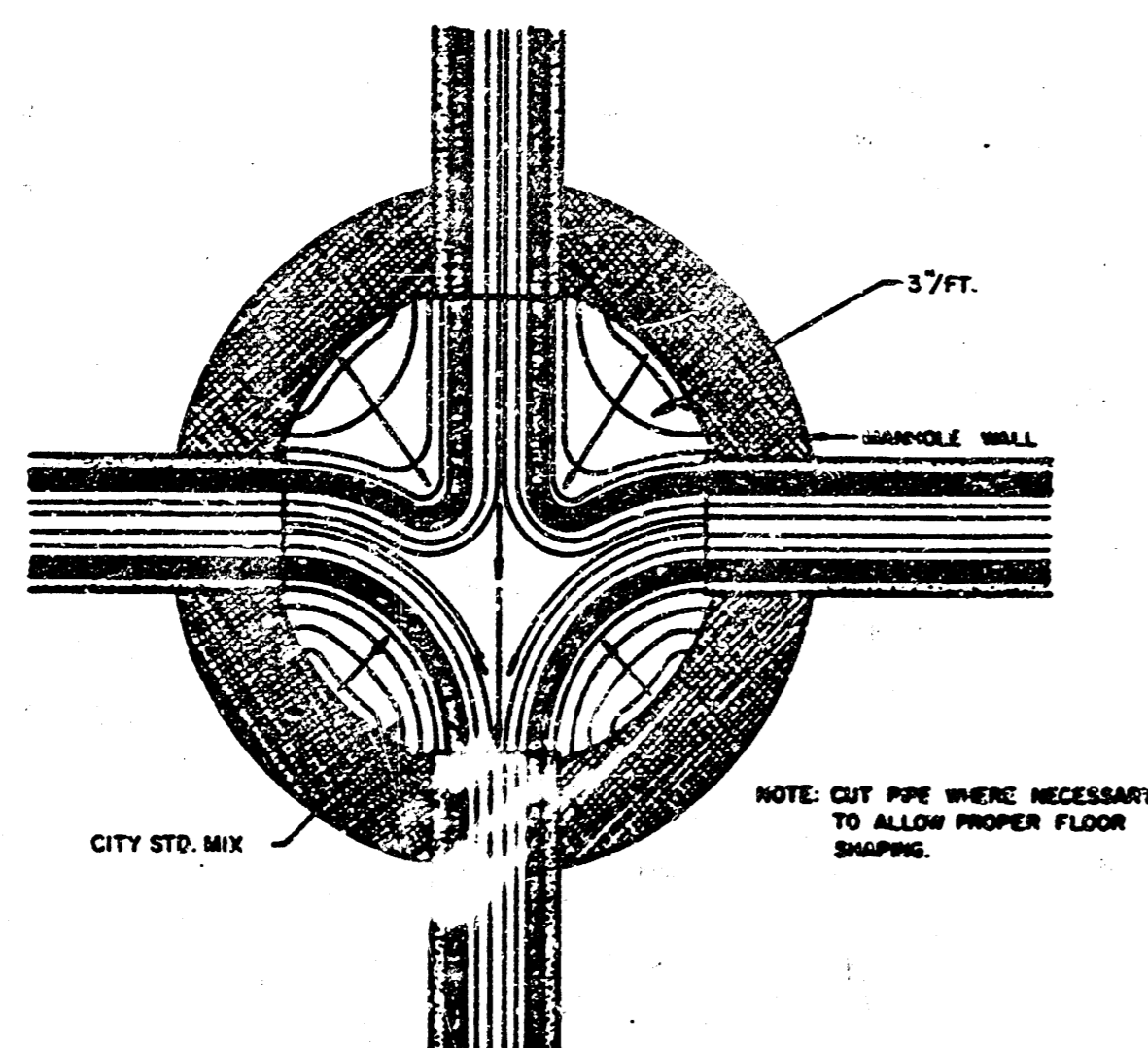
ALL PIPE GROUTING SHALL BE DONE WITH NON-METALIC SHRINKAGE CORRECTING GROUTS SUCH AS MASTER BUILDER'S "EMBECCO 713"; SET PRODUCTS INC. "SET"; OR AN APPROVED EQUAL. THE GROUTED INLET PIPE CONNECTION SHALL BE SEALED ON THE EXTERIOR WITH BITUMASTIC SUPER SERVICE BLACK AS MANUFACTURED BY KOPPERS, TARMASTIC 103 AS MANUFACTURED BY UNITED STATES STEEL, 450 HEAVY TERMECOOL AS MANUFACTURED BY TERMECO OR AN APPROVED EQUAL. APPLICATION SHALL CONFORM TO MANUFACTURER'S REQUIREMENTS.

THE FLOORS OF ALL MANHOLES SHALL BE SHAPED WITH FLOW CHANNELS SUCH THAT THE MANHOLES WILL BE SELF-CLEANING AND FREE OF AREAS WHERE SOLIDS COULD BE DEPOSITED AS SERVICE FLOORS THROUGH THE MANHOLE FROM ALL INLET PIPES TO THE OUTLET PIPE. FLOW CHANNELS SHALL BE FORMED TO MATCH THE BOTTOM HALVES OF THE 12" RING PIPES AND THE OUTFLOWING PIPE AS SHOWN BY THE DRAWINGS EXCEPT FOR INSIDE DROP MANHOLES. FLOW CHANNELS FOR INSIDE DROP MANHOLES SHALL BE CONSTRUCTED AS INDICATED BY THE DRAWING. MANHOLE FLOORS SHALL HAVE SLOPES OF 3 INCHES PER FOOT IN THE AREAS OUTSIDE OF THE FLOW CHANNELS SLOPED TOWARD THE FLOW CHANNELS. PIPES LAID THROUGH MANHOLES SHALL HAVE THE TOP HALF REMOVED TO NEAT LINES FOR THE FULL INSIDE DIAMETER OF THE MANHOLE. MANHOLE FLOORS SHALL THEN BE SEALED AROUND THE BOTTOM HALF OF THE PIPE WHICH FORMS THE FLOW CHANNEL.

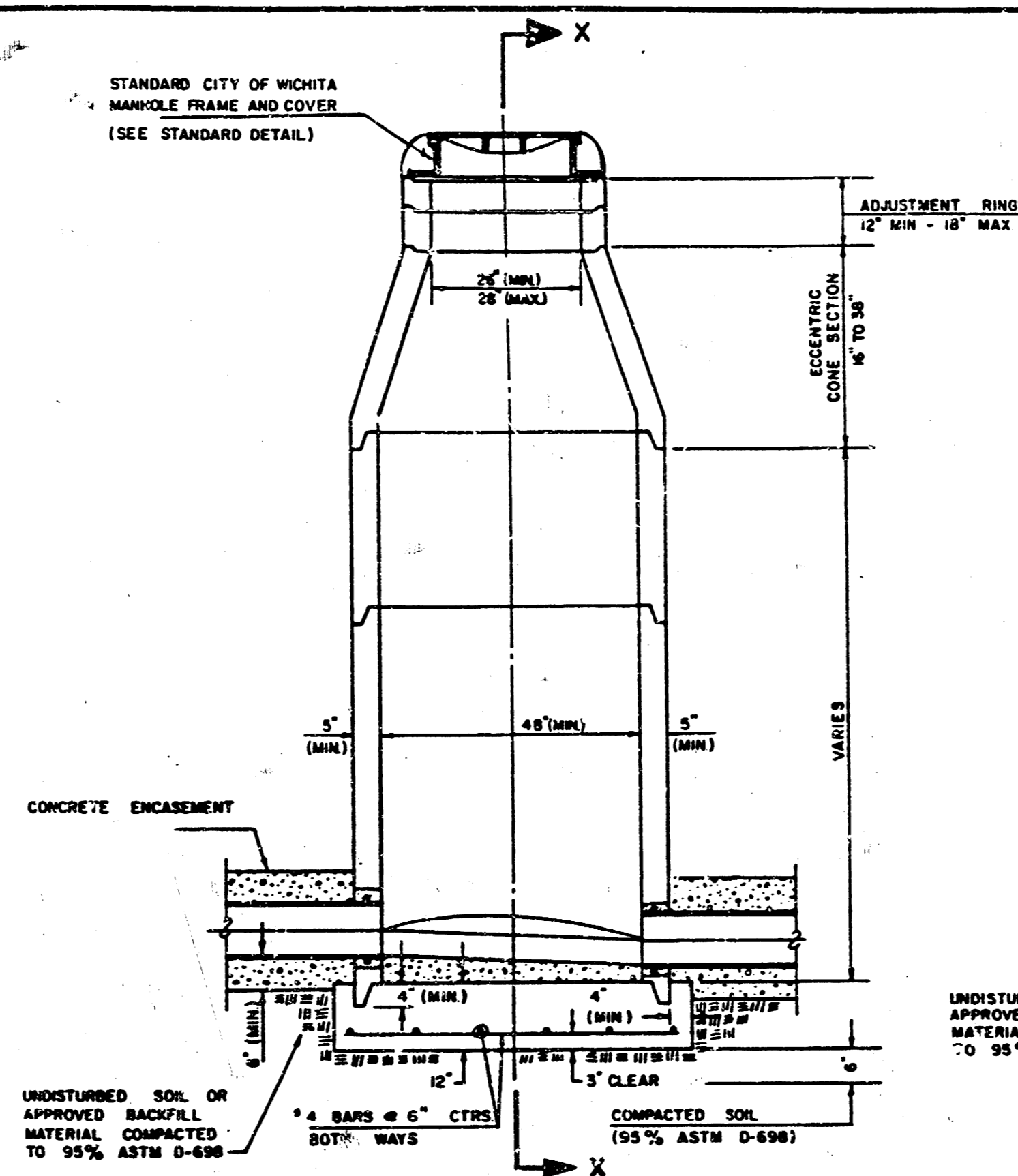
MANHOLE COVER CASTINGS AND MANHOLE FRAME CASTINGS SHALL CONFORM TO THE REQUIREMENTS AS INDICATED IN THE STANDARD SPECIFICATIONS AND AS SHOWN IN THE STANDARD DETAIL DRAWING.

THE VERTICAL DROP IN INSIDE DROP MANHOLES SHALL NOT EXCEED 1' FOR INFLOWING PIPES SIZED 12" OR SMALLER AND 2' FOR INFLOWING PIPES LARGER THAN 12". THE CROWNS OF INFLOWING PIPES SHALL NEVER BE SET LOWER THAN THE CROWN OF THE OUTFLOWING PIPE.

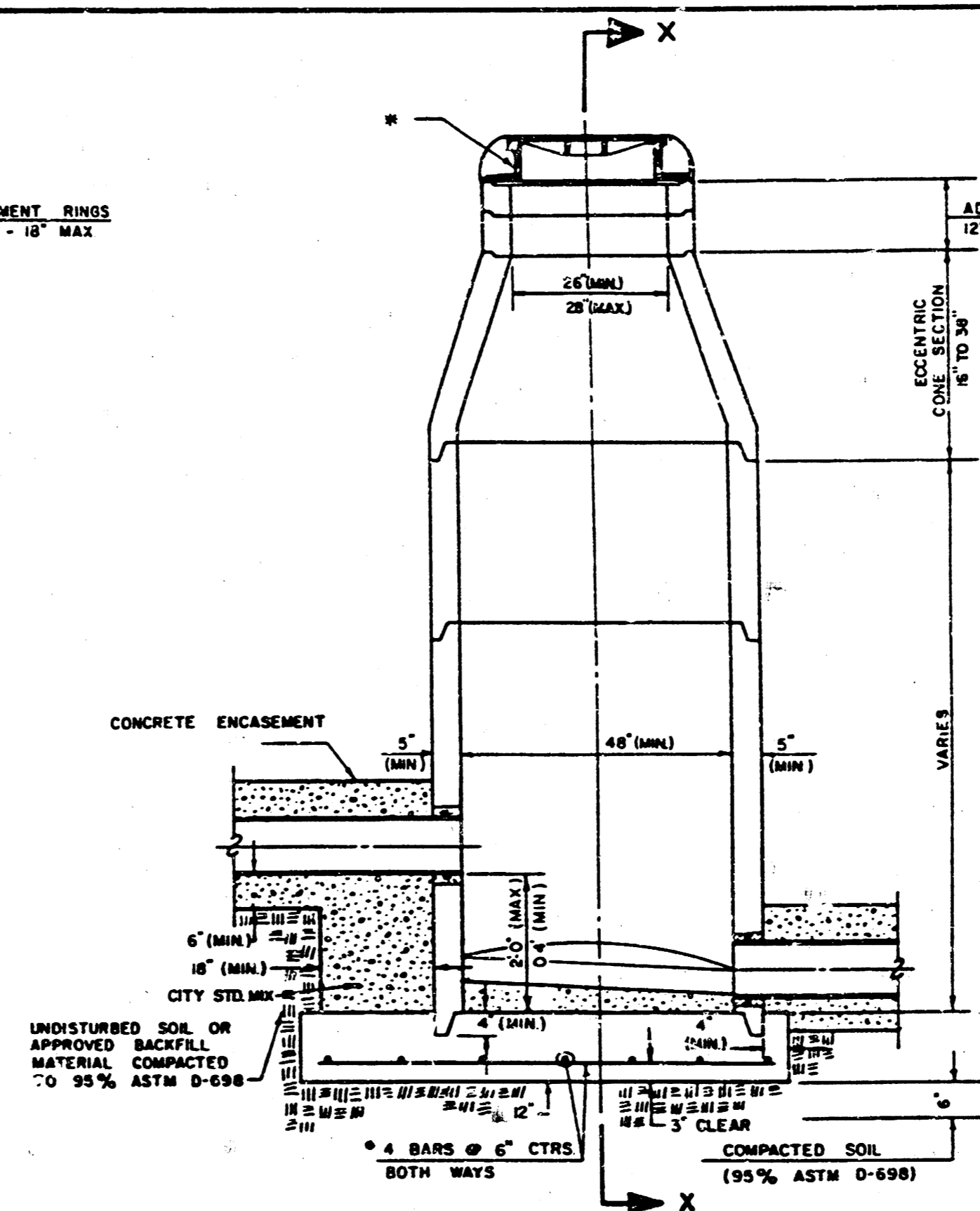
BUTYL-RUBBER JOINT SEALER SHALL BE KENT SEAL NO. 2 OR APPROVED EQUAL.



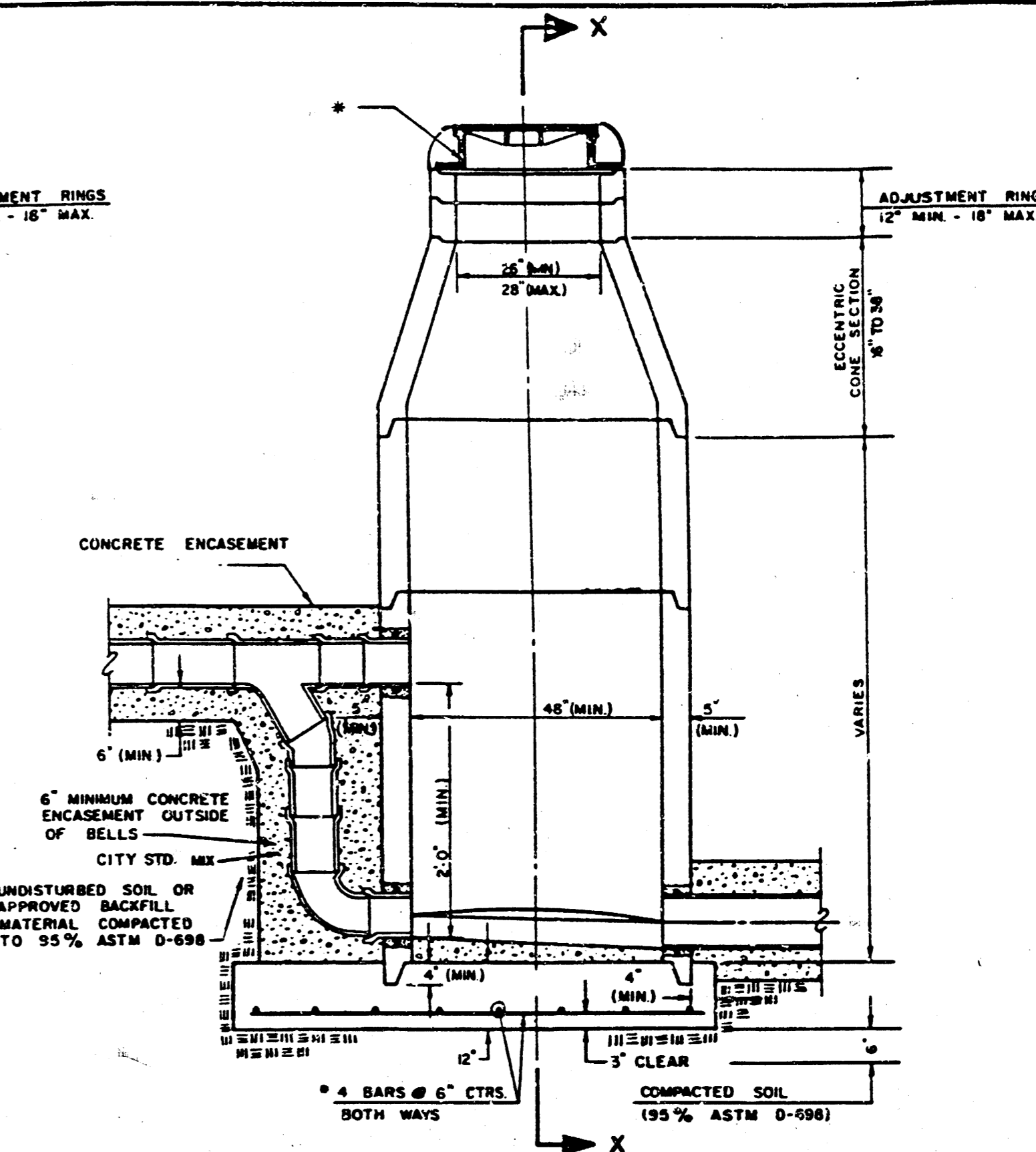
**TYPICAL MANHOLE FLOOR SHAPING**



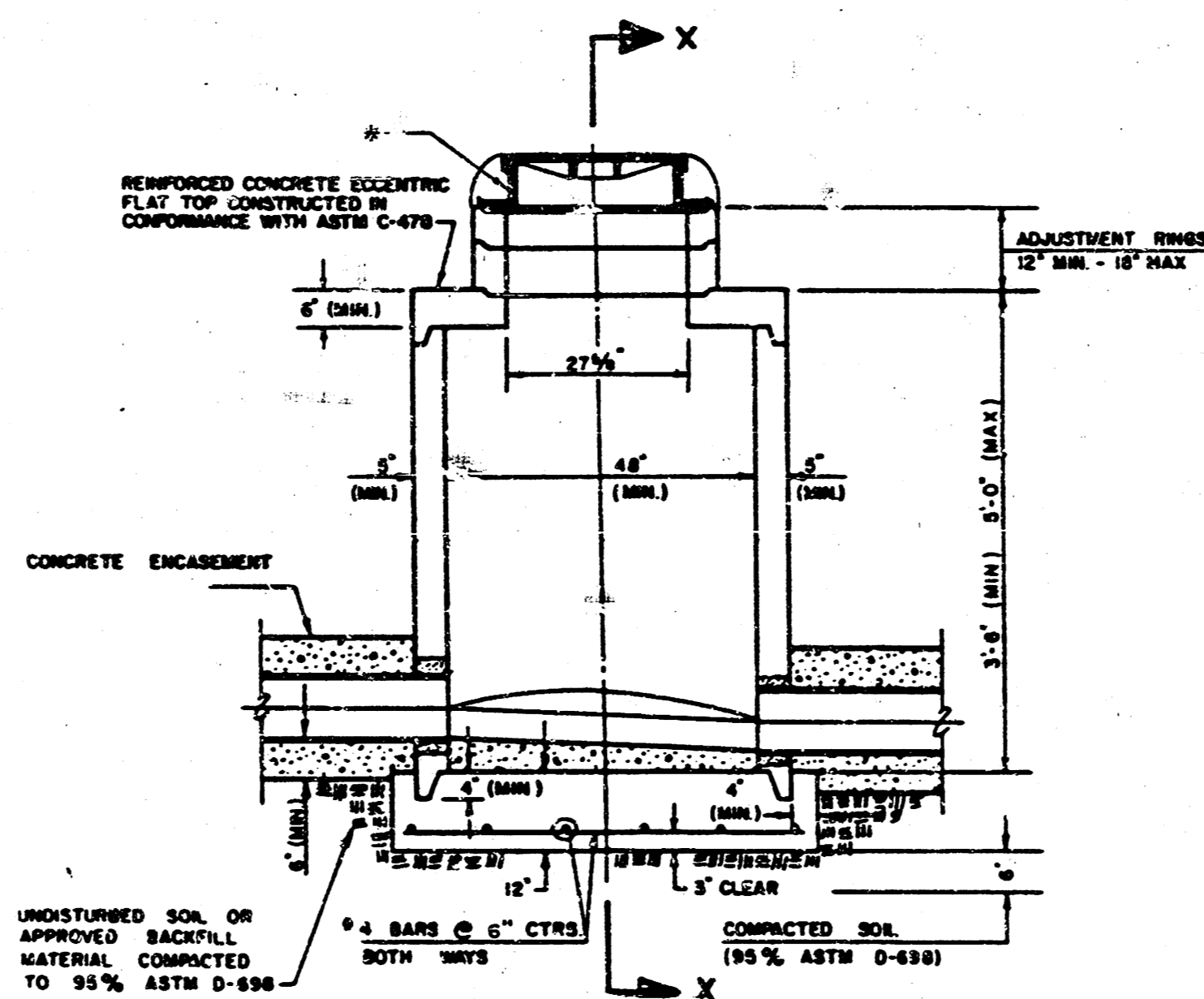
**PRECAST STANDARD MANHOLE**



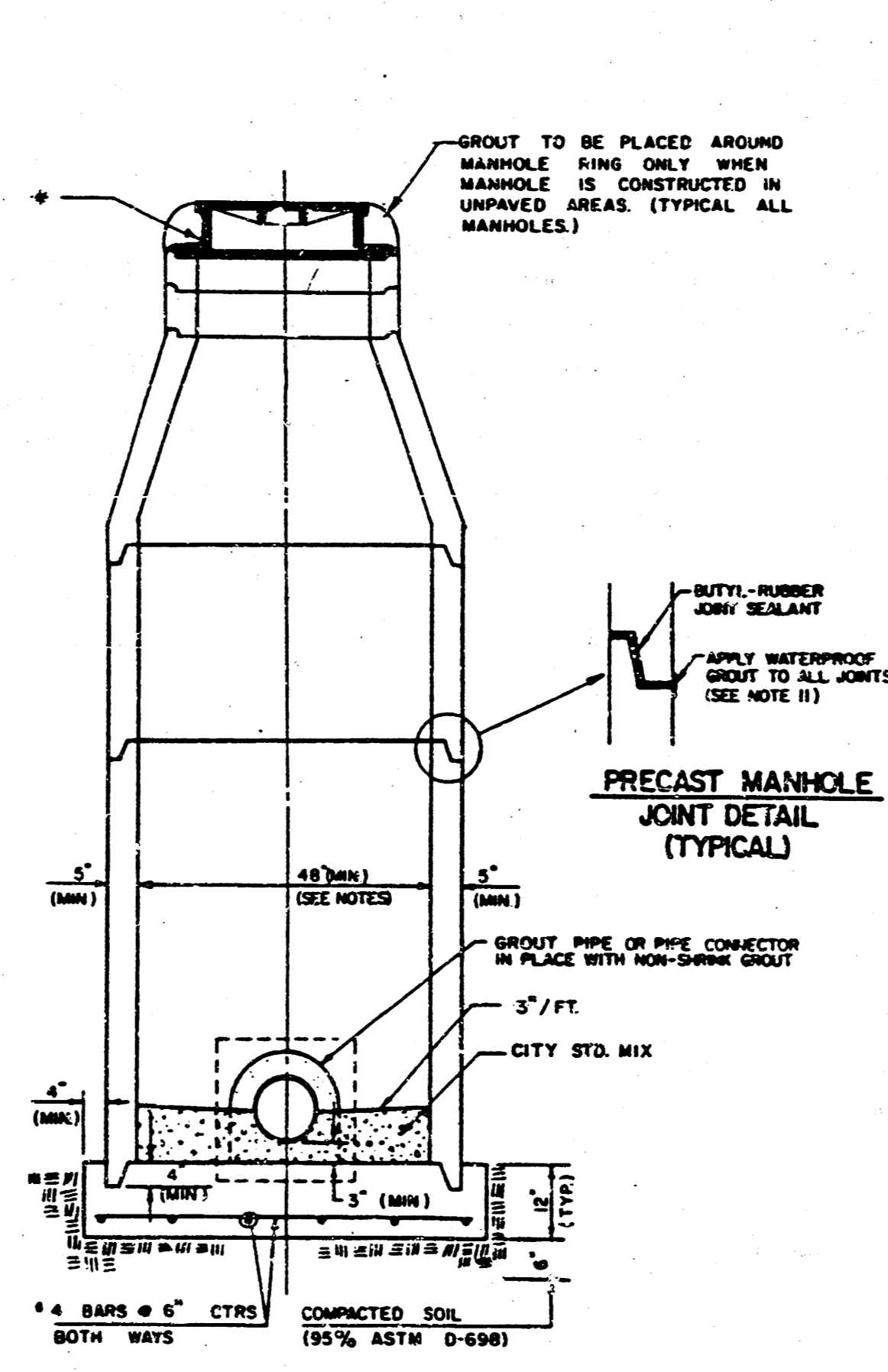
**PRECAST INSIDE DROP MANHOLE**



**PRECAST OUTSIDE DROP MANHOLE**



**PRECAST SHALLOW MANHOLE**



**SECTION X (TYPICAL)**

**PRECAST MANHOLE NOTES**

- IF THE PIPE OPTION IS REQUIRED, THE MANHOLE STANDARD SHALL BE THE STANDARD FOR THE PIPE TO BE USED. THE MANHOLE SHALL BE CONSTRUCTED TO COMPACT UNLESS AS SHOWN OR INDICATED BY THE DRAWING. THE MANHOLE SHALL BE CONSTRUCTED TO COMPACT UNLESS AS SHOWN OR INDICATED BY THE DRAWING.
- STEEL REINFORCEMENT IS REQUIRED IN ALL MANHOLE BASES.
- APPROVED FLEXIBLE WATERPROOFING GROUTS SHALL BE USED TO SEAL THE JOINTS. THE GROUT SHALL BE APPLIED TO THE JOINTS OF THE MANHOLE AND TO THE JOINTS OF THE PIPES AS SHOWN ON THE DRAWING.
- PIPE FLOOR SHALL BE PROVIDED BY PIPE SUPPLIER WHEN AVAILABLE.
- ALL MANHOLE CONSTRUCTION SHALL BE WITH TYPICAL.
- TOP OF MANHOLE FLOOR SLAB SHALL BE AT LEAST 1" ABOVE THE FINISH LINE OF THE OUTLET PIPE TO PROVIDE SUFFICIENT FLOOR THICKNESS OF MANHOLE.
- ALL PRECAST CONCRETE MANHOLE SECTIONS SHALL CONFORM TO THE LISTED SECTION OF THIS SPECIFICATION UNLESS OTHERWISE SPECIFIED.
- CONCRETE FOR MANHOLE BASES SHALL BE AS SPECIFIED IN THE SPECIFICATION.
- PRECAST MANHOLES SHALL BE SET AT LEAST 1" ABOVE THE FINISH LINE OF THE OUTLET PIPE.
- MANHOLES WITH PIPE SIZES LARGER THAN 12" SHALL HAVE 6" INSIDE DIAMETER.
- WATERPROOF GROUT FOR PRECAST JOINTS SHALL BE APPLIED WITH THE PROTECTIVE LISTED SEALANT, OR ACCORDING TO THE MANUFACTURER'S RECOMMENDATIONS IF APPROVED BY THE ENGINEER.

MATERIAL	PARTS BY WEIGHT
PORTLAND CEMENT	100
SAND	100
WATER	100

No.	Revision	By	Date
-----	----------	----	------

**DETAIL  
PRECAST CONCRETE MANHOLE  
CITY OF WICHITA, KANSAS**

**BAUGHMAN COMPANY, P.A.**  
SURVEYING & ENGINEERING  
314/262-7271 • 330 LAURA • WICHITA, KANSAS 67211