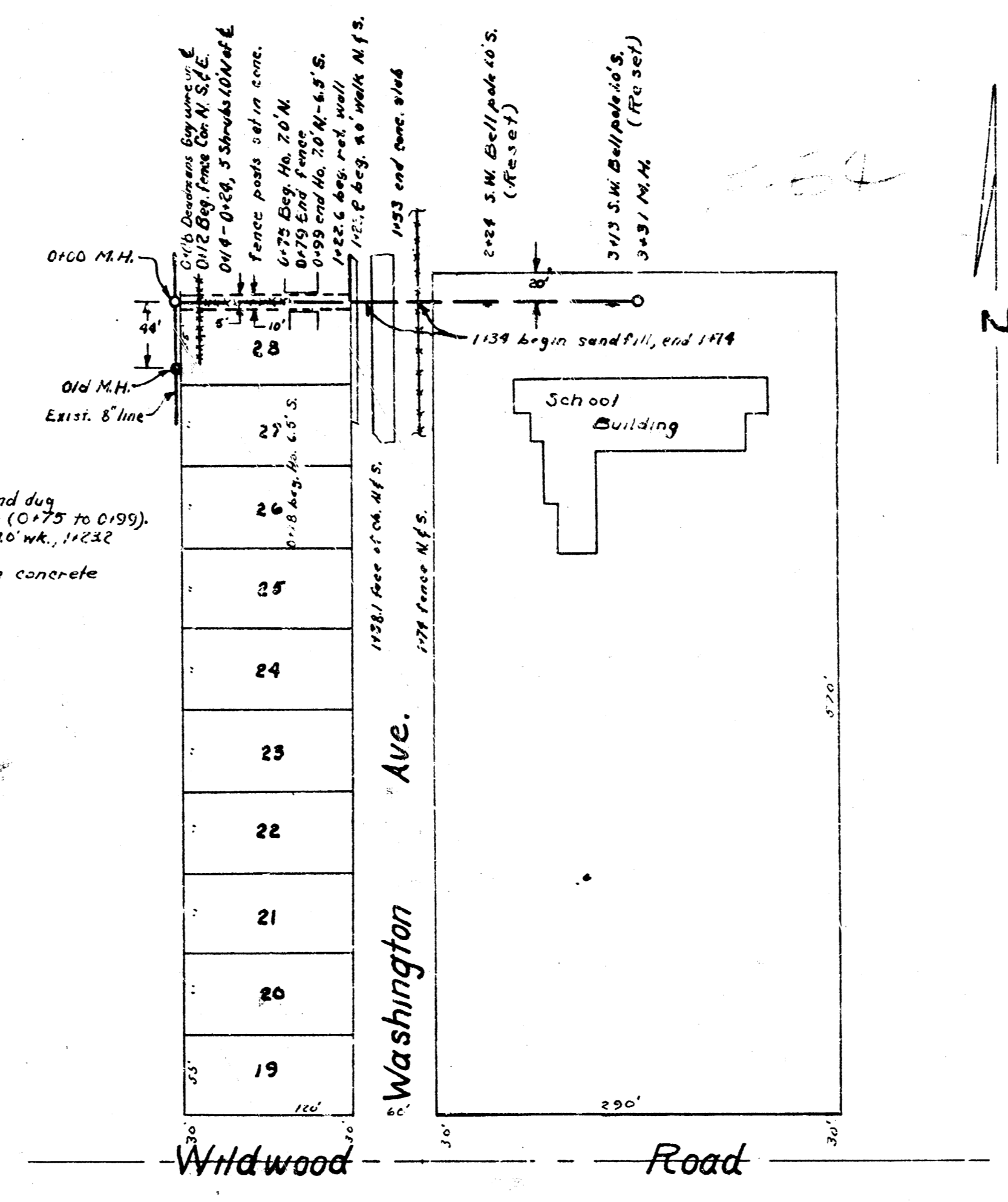


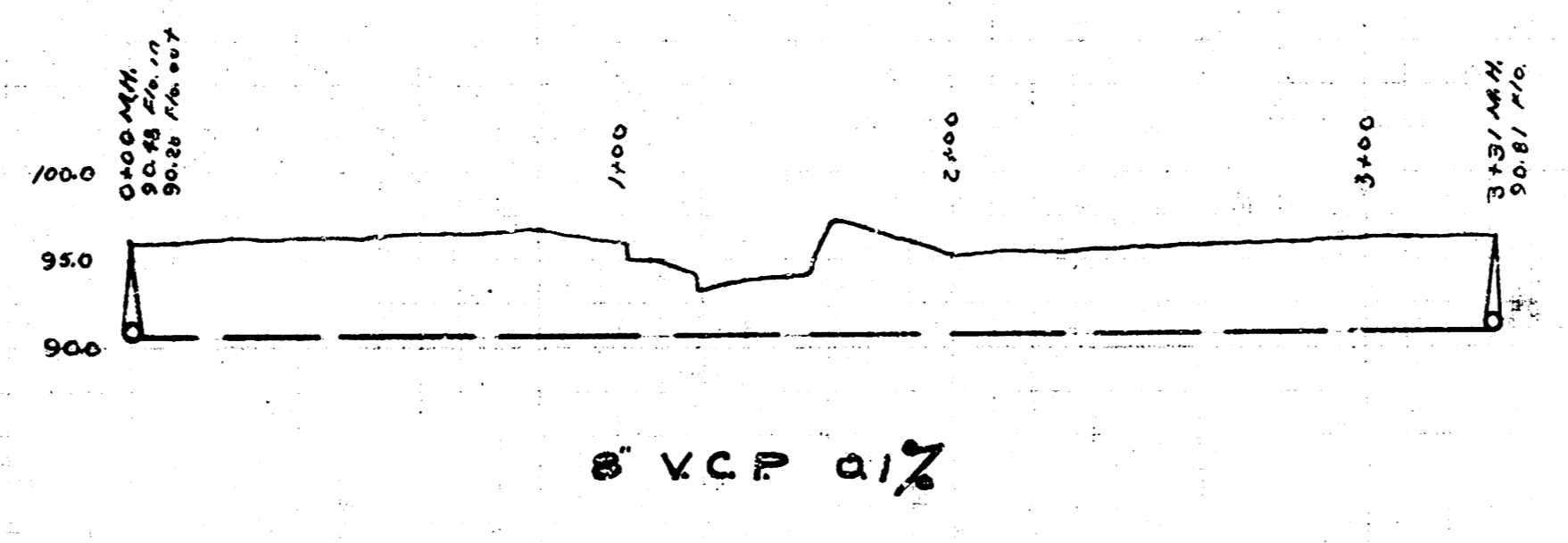
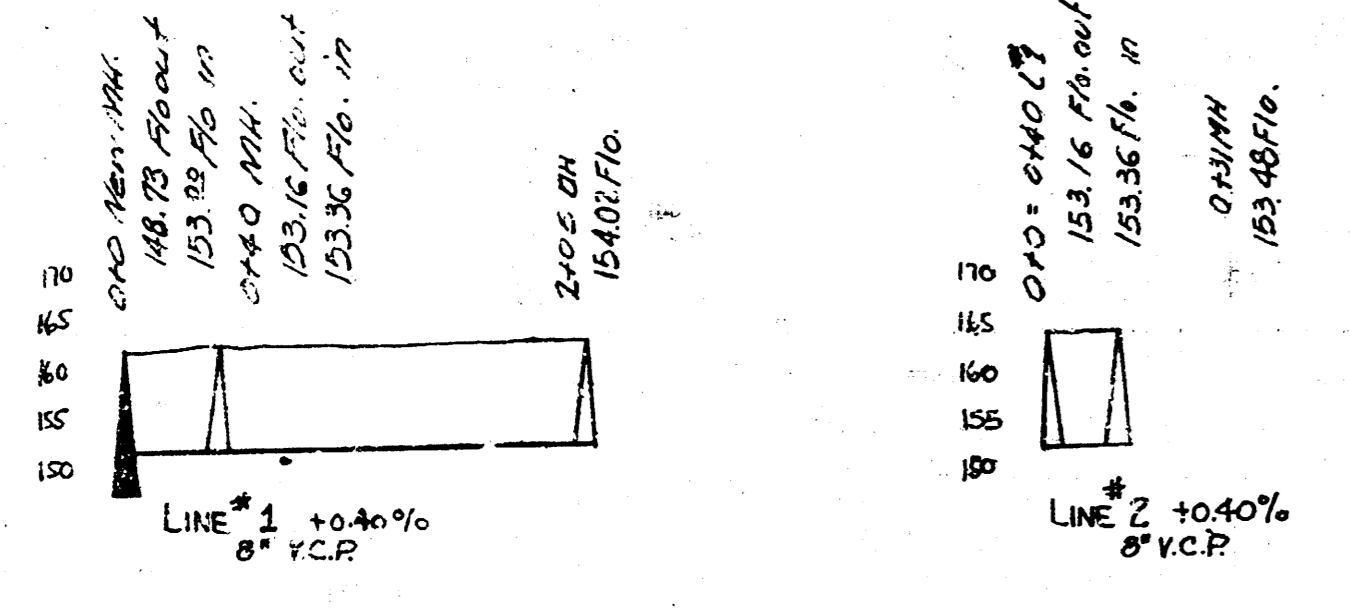
LAT. 42, DRY CREEK SUBMAIN, 55#12

B.M. 9746 SE Corner Cox Park, base SW Cor. Gilbert & Delaware
 B.M. 9745 6" in Globe Position of (North end) of base 45 Cor.

Note: Ditch to be hand dug between houses (0125 to 0199).
 Remove & replace 40' w/c, 11252 to 11222
 Remove & replace concrete 11375 to 1155



B.M. 9758 T in Tree, fine hydrant N.W. cor. Mosley & Murray
 B.M. 9747 R/R spike in H.L. Transit for E.C. W. 1125, 1122



LAT. 42, DRY CREEK SUBMAIN, 55#12
 SOUTH WASHINGTON ELEMENTARY SCHOOL
 CITY OF WICHITA, KANSAS
 L.K. WHITE - CITY ENGINEER
 OCT. 6, 1949 - PRIVATE JOB