

# SANITARY SEWER IMPROVEMENTS TO SERVE SOUTHWEST PLAZA ADDITION

Private Project Number

**620 PPS (607861)**

**CITY OF WICHITA, KANSAS**  
Michael E. Lindebak, City Engineer

## GENERAL NOTES:

1. Contractor will be required to provide notice to utility companies a minimum of twenty-four (24) hours prior to any excavation, as follows:

Kansas One-Call 687-2470

The Contractor must notify the following in case of an emergency:

Cablevision	262-4270
or	263-2061
K.P.L. Gas Service Company	383-8650
Kansas Gas & Electric Company	383-8600
Arkla Gas Company	942-8350
Southwestern Bell Telephone Company	1-571-2611
City of Wichita Water Department	268-4908
City of Wichita Sewer Maintenance	268-4071

2. Underground utility service lines and overhead utility pole lines are to be adjusted as necessary by others prior to construction unless the plans specifically call for their adjustment by the Contractor or unless the plans specifically identify a utility to be adjusted by its owner during construction. Existing utilities and their location, as shown on the plans, represent the best information obtainable for design. The Contractor will be required to work around existing utilities within the right-of-way which do not conflict with proposed construction.

3. Properties within the project limits may have underground sprinkler systems in public right-of-way which conflict with new construction. Contractor will be required to remove such improvements should they not be removed by their owner at the time of construction of the project. The Contractor will be required to salvage all sprinkler heads and/or valves and give such material to their owner. Portions of underground sprinkler systems not in conflict with new construction shall be protected from damage and shall remain in place. All work in connection with underground sprinkler systems shall be considered as subsidiary to the contract pay items of work.

4. The Contractor shall notify pipeline companies at least 24 hours in advance of any work being performed across and/or adjacent to pipelines.

5. Trees and shrubs in public right-of-way which are in direct conflict with proposed new construction shall be removed by the Contractor with the Engineer's approval. Trees and shrubs which are not in direct conflict with proposed new construction shall be saved and protected from damage.

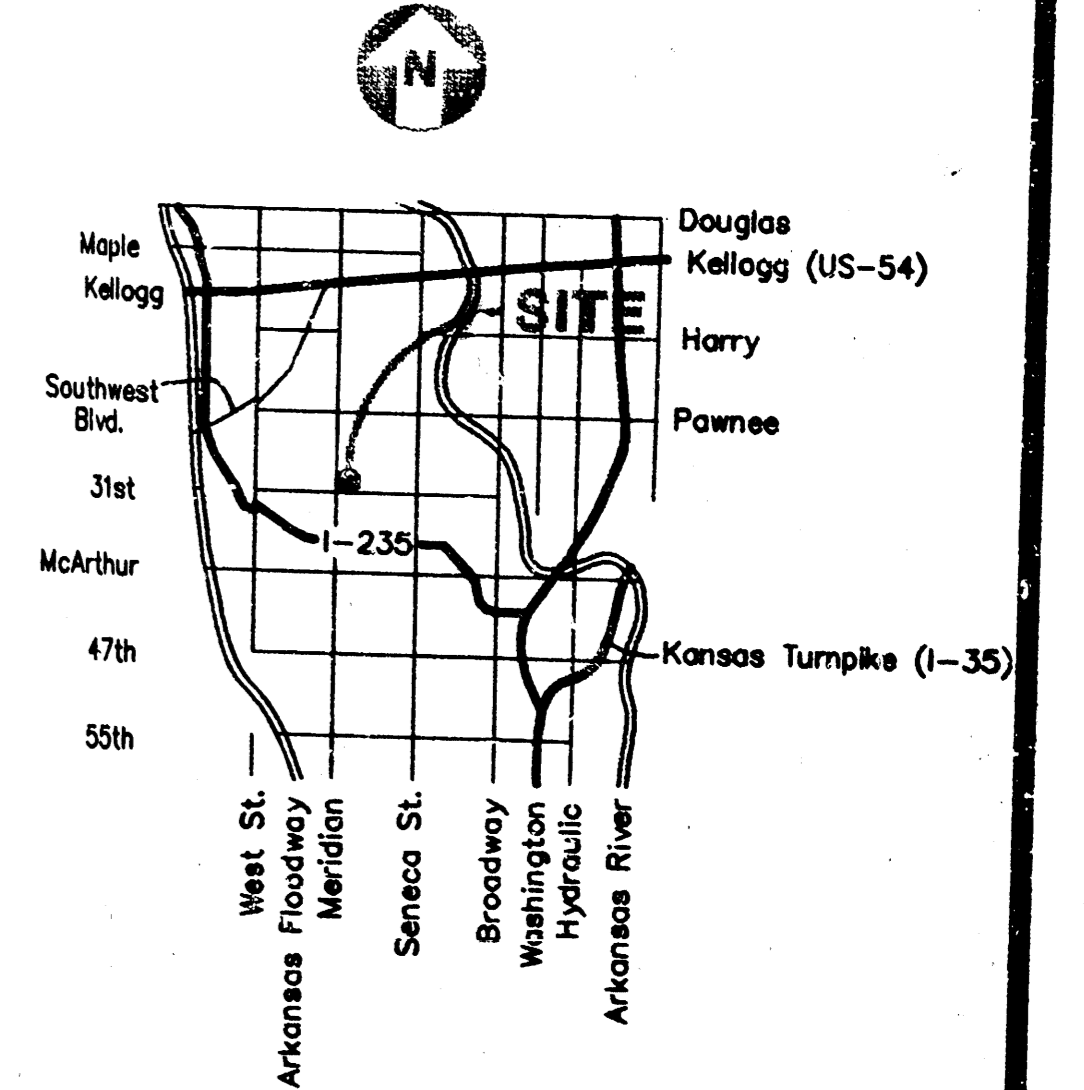
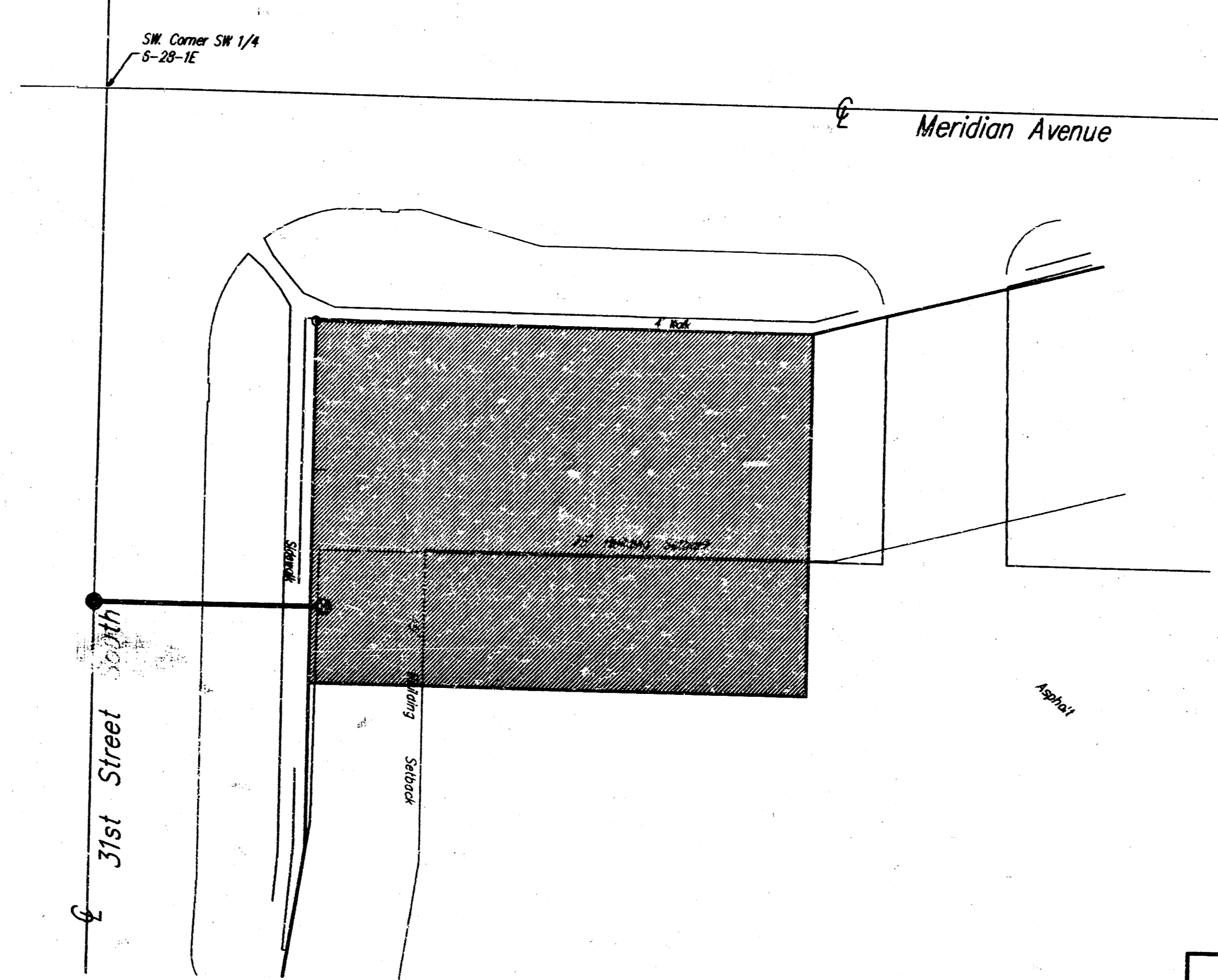
6. The Contractor shall maintain a continuous flow of traffic through the project at all times.

7. The Contractor shall be responsible for maintaining continuous flow of sewage through construction. Contractor's proposed method for maintaining sewage flow shall be approved by the Engineer. Cost of maintaining flow of sewage through construction will not be paid for directly and this cost shall be considered as subsidiary to the other pay items of work.

8. The Contractor shall be responsible for preserving property irons. The Contractor will be required to re-establish any property irons which are damaged or destroyed by his construction operations. Such irons shall be re-established by a licensed land surveyor in accordance with state laws.

9. Removal of existing pavement and/or replacement of existing pavement shall conform to the applicable sections of the City of Wichita Standard Specifications. Minimum limits of such pavement removal and replacement shall be one foot beyond the limits of the excavation made for the sewer line, except when such lines of removal are within three (3) feet of an existing joint, the limits of removal shall be extended to the existing joint.

10. All areas disturbed by construction operations shall be restored to existing conditions, according to city standards.



## BENCHMARK:

City of Wichita, City Disk located on the North-West corner of the intersection of 31st Street and Meridian Ave., On East Headwall 40' W and 72' NW of Traffic Signal MH 38.6' NE of traffic signal pole, 82.03' NW of Section corner. Elevation = 96.88 City datum

## INDEX:

- 1 Title Sheet
- 2 Plan/Profile

APPROVED AS NOTED  
BY CITY ENGINEER OF WICHITA  
Sanitary Sewers VRH 4/11/96

NOTE TO CONTRACTORS  
Inspection and testing for this project is to be provided by a Licensed Consulting Engineering Firm under contract with the Owner/Developer. Said inspection to be in accordance with the City of Wichita standard construction engineering practices and certified by a Licensed Professional Engineer. No work shall be performed in dedicated easements or public right-of-way by the Contractor without such inspection nor shall any work be commenced without written authorization by the City Engineer. All Construction and Materials shall comply with the City of Wichita Specifications and Standards (on file and available in the City Engineer's Office).

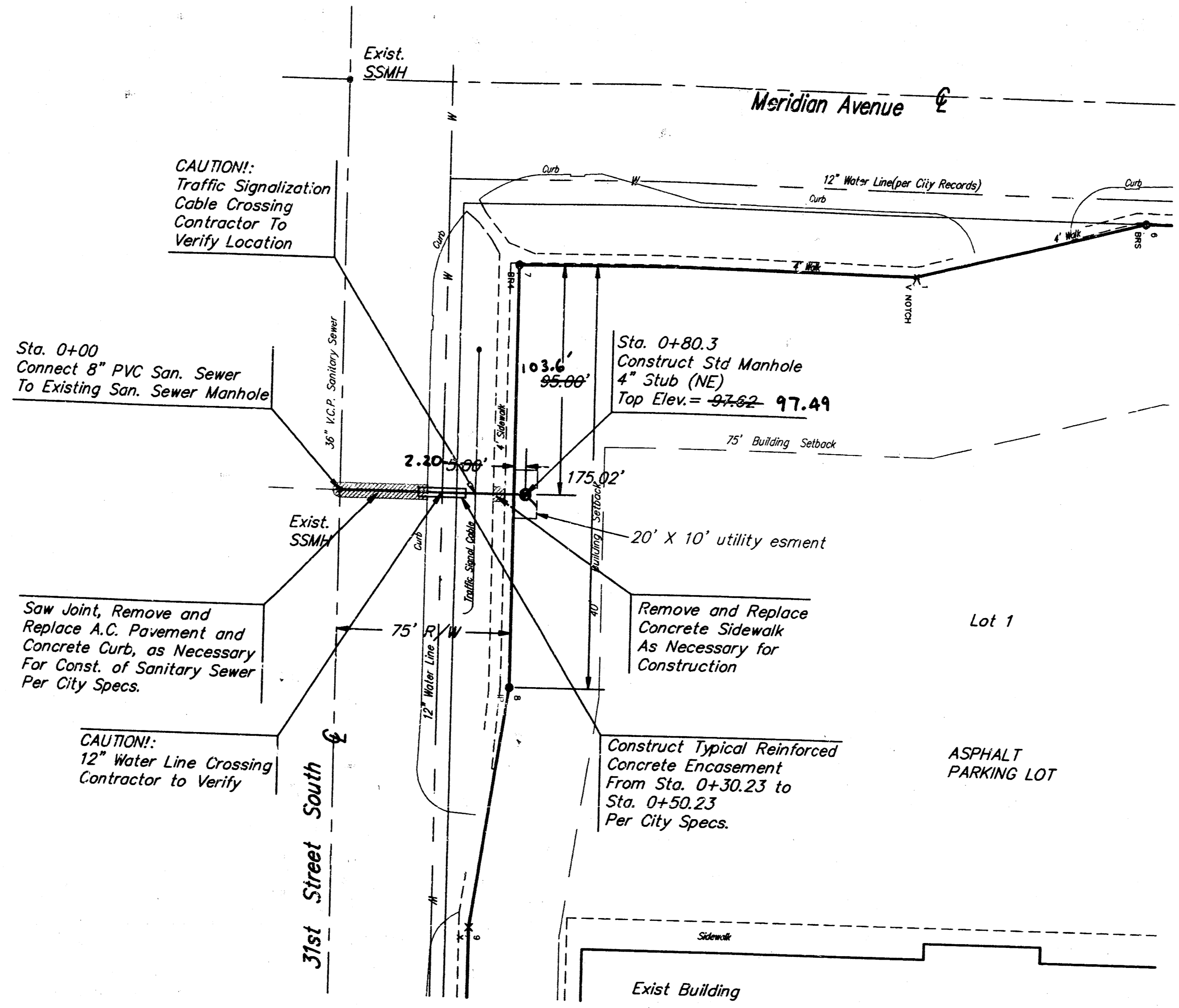
Booked 4-26-96  
CJB  
From Is Baits

Benefit District

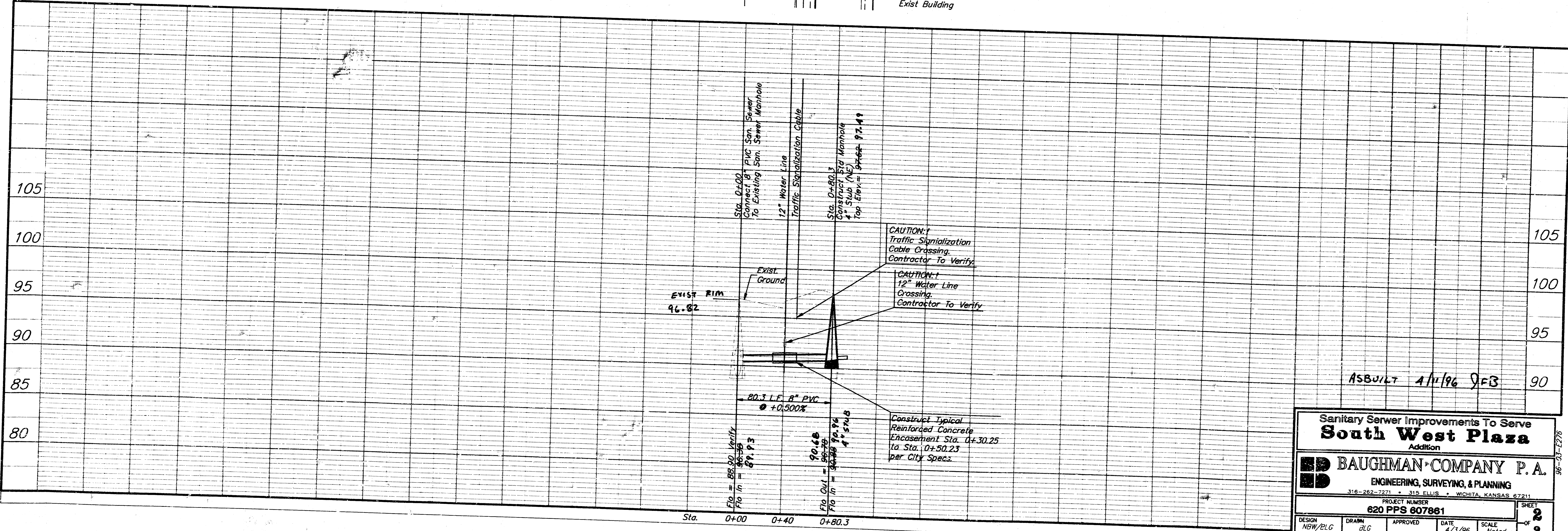


ASBUILT 4/11/96 QFB  
BAUGHMAN COMPANY P. A.  
ENGINEERING & SURVEYING  
316/262-7271 • 315 ELLIS • WICHITA, KANSAS 67211

**BENCHMARK:**  
 City of Wichita, City Disk located on the North-West corner of the intersection of 31st and Meridian Ave., on East Headwall, 40' West and 72' NW of Traffic Signal MH, 38.6' NE of traffic signal pole, 82.03' NW of Section corner.  
 Elevation = 96.88 City Datum



Scale:  
 1" = 40' Horizontal  
 1" = 5' Vertical  
 ● = Iron



ASBUILT 4/11/96 JFB

Sanitary Sewer Improvements To Serve  
**South West Plaza**  
 Addition

**BAUGHMAN COMPANY P.A.**  
 ENGINEERING, SURVEYING, & PLANNING  
 318-262-7221 • 315 ELLIOT • WICHITA, KANSAS 67211

PROJECT NUMBER  
**620 PPS 607861**

DESIGN: NBW/ELG    DRAWN: JLC    APPROVED:    DATE: 4/3/96    SCALE: Noted

SHEET 2 OF 2