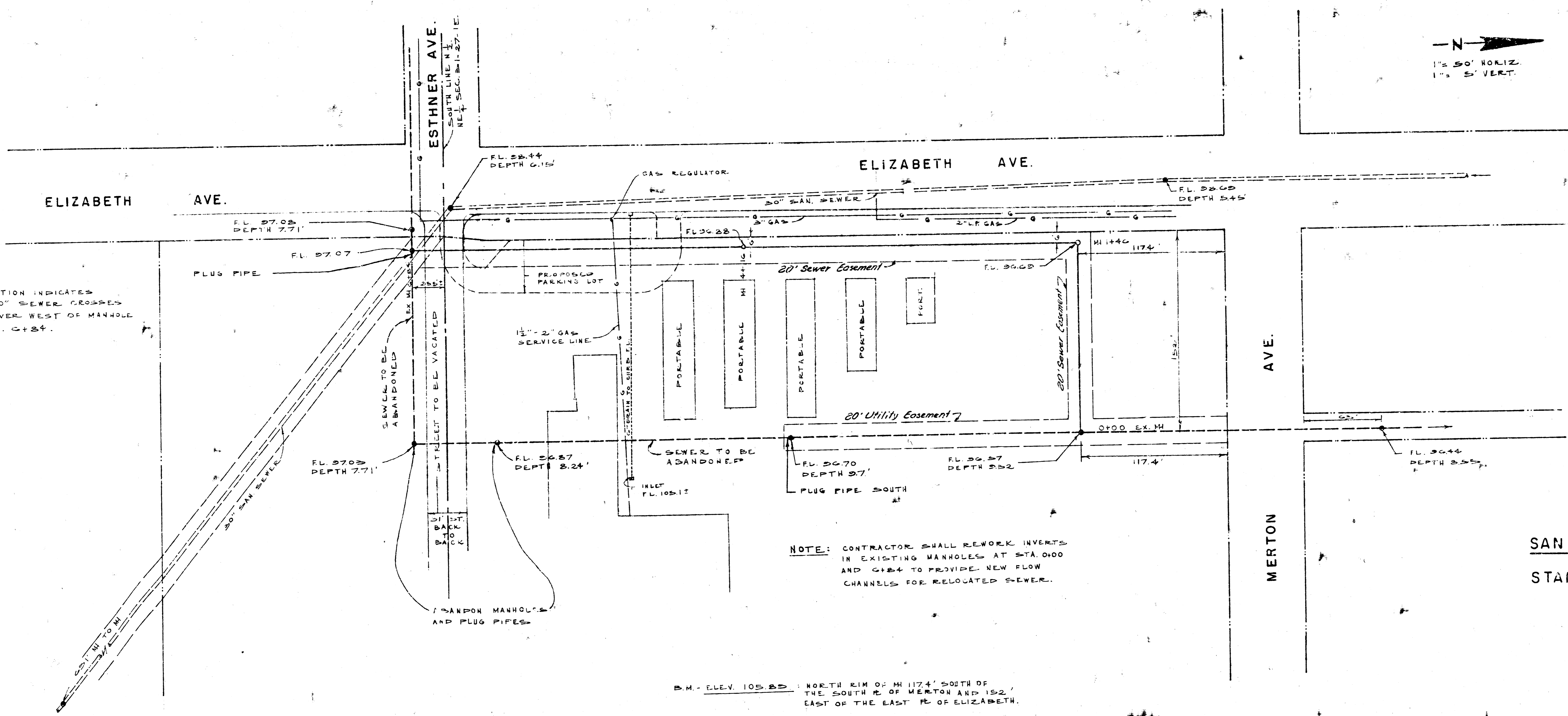


INFORMATION INDICATES THAT 20" SEWER CROSSES 12" SEWER WEST OF MANHOLE AT STA. C+34.



NOTICE TO CONTRACTOR  
 THIS PROJECT HAS BEEN  
 APPROVED BY THE CITY ENGINEER  
 DATE: 1/26/78  
 1-21-78  
 APPROVED AND NOTED  
 BY CITY ENGINEER  
 DATE: 1/26/78  
 CITY ENGINEER  
 DATE: 1/26/78  
 CITY ENGINEER

NOTE: CONTRACTOR SHALL REWORK INVERTS IN EXISTING MANHOLES AT STA. 0+00 AND 0+24 TO PROVIDE NEW FLOW CHANNELS FOR RELOCATED SEWER.

**SANITARY SEWER RELOCATION  
 STANLEY ELEMENTARY SCHOOL**

K.O. TAYLOR, P.E.  
 JANUARY 26, 1978

B.M. - ELEV. 105.85 - NORTH RIM OF M 1174' SOUTH OF THE SOUTH R. OF MERTON AND 152' EAST OF THE EAST R. OF ELIZABETH.

