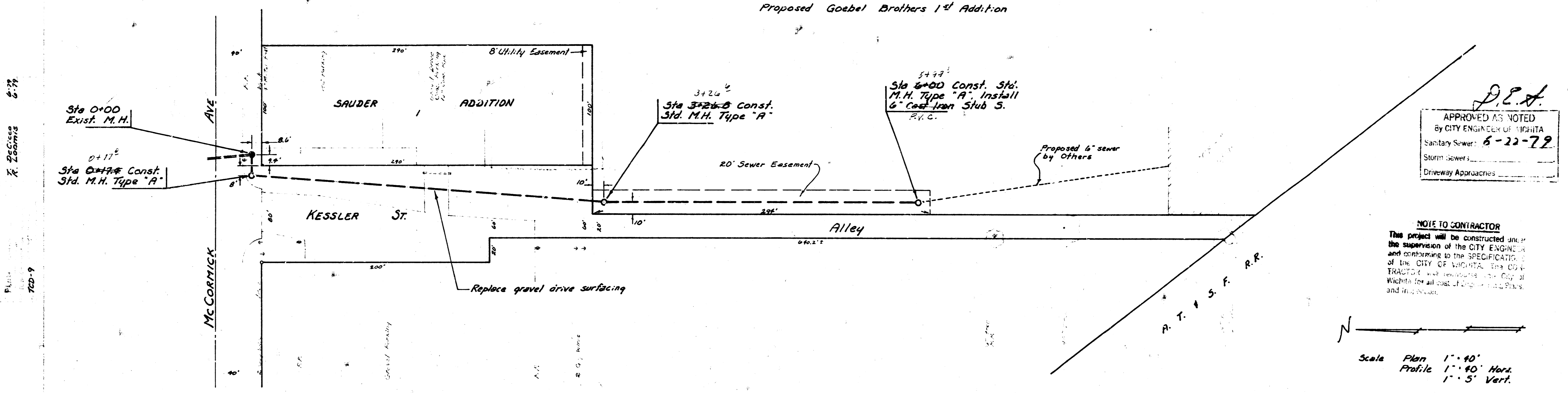


NOTE: CONTRACTOR SHALL USE EXCESS EXCAVATED MATERIAL TO MAINTAIN A MINIMUM COVER OF 30" OVER THE TOP OF THE SANITARY SEWER PIPE. CONTRACTOR WILL BE REQUIRED TO MAKE ARRANGEMENTS WITH BUSINESS ON SAUDER ADDITION SUCH THAT WILL PERMIT CONSTRUCTION OF THIS SEWER WITHOUT ADVERSELY AFFECTING VEHICULAR ACCESS TO THIS PROPERTY.

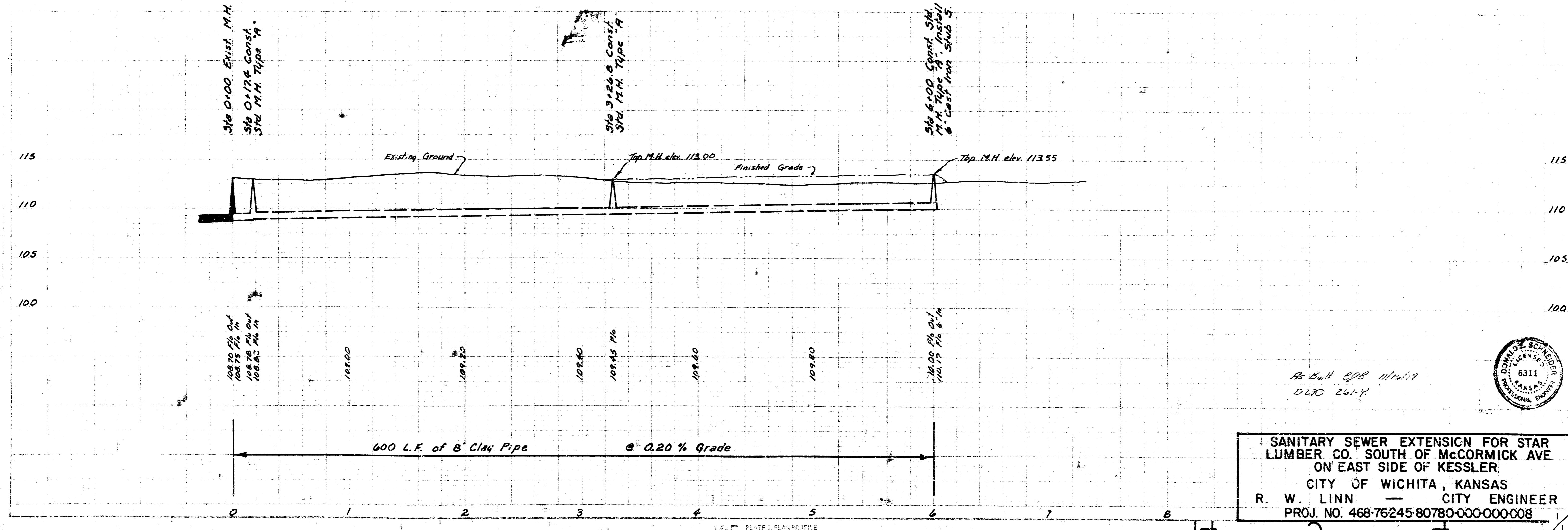
B.M. 113.096 City Std. Disc. #3 West of & West St. + 3' North of & Irving.  
 B.M. 113.62 "a" cut E-End Return, N-side McCormick on Dr to T & F Snacks Across from E-End Return McCormick & Kessler.



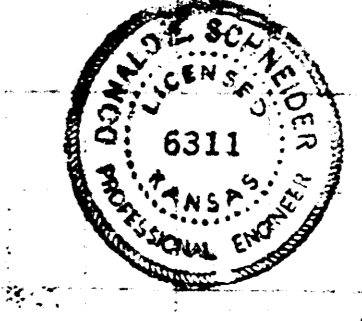
D.P.A.  
 APPROVED AS NOTED  
 By CITY ENGINEER OF WICHITA  
 Sanitary Sewer: 6-22-72  
 Storm Sewer: \_\_\_\_\_  
 Driveway Approaches: \_\_\_\_\_

NOTE TO CONTRACTOR  
 This project will be constructed under the supervision of the CITY ENGINEER and conforming to the SPECIFICATIONS of the CITY OF WICHITA, the CITY TRACTOR will be located in the City of Wichita for all cost of design, plans and in its use.

Scale Plan 1" = 40'  
 Profile 1" = 40' Vert.  
 1" = 5' Vert.



SANITARY SEWER EXTENSION FOR STAR LUMBER CO. SOUTH OF McCORMICK AVE ON EAST SIDE OF KESSLER CITY OF WICHITA, KANSAS R. W. LINN — CITY ENGINEER PROJ. NO. 468-76245-80780-000-000-008



FILMED FROM THE BEST AVAILABLE COPY