

BM 11985 "a" out in NW cor. of walk of NW cor. of NW cor. Christ the King Catholic Church
 BM 11685 "a" top N curb Maple @ W.L. Tracy

Sta 0+00 const. old Manhole Type A on existing 8" sewer.

Remove and replace const. street between joints.

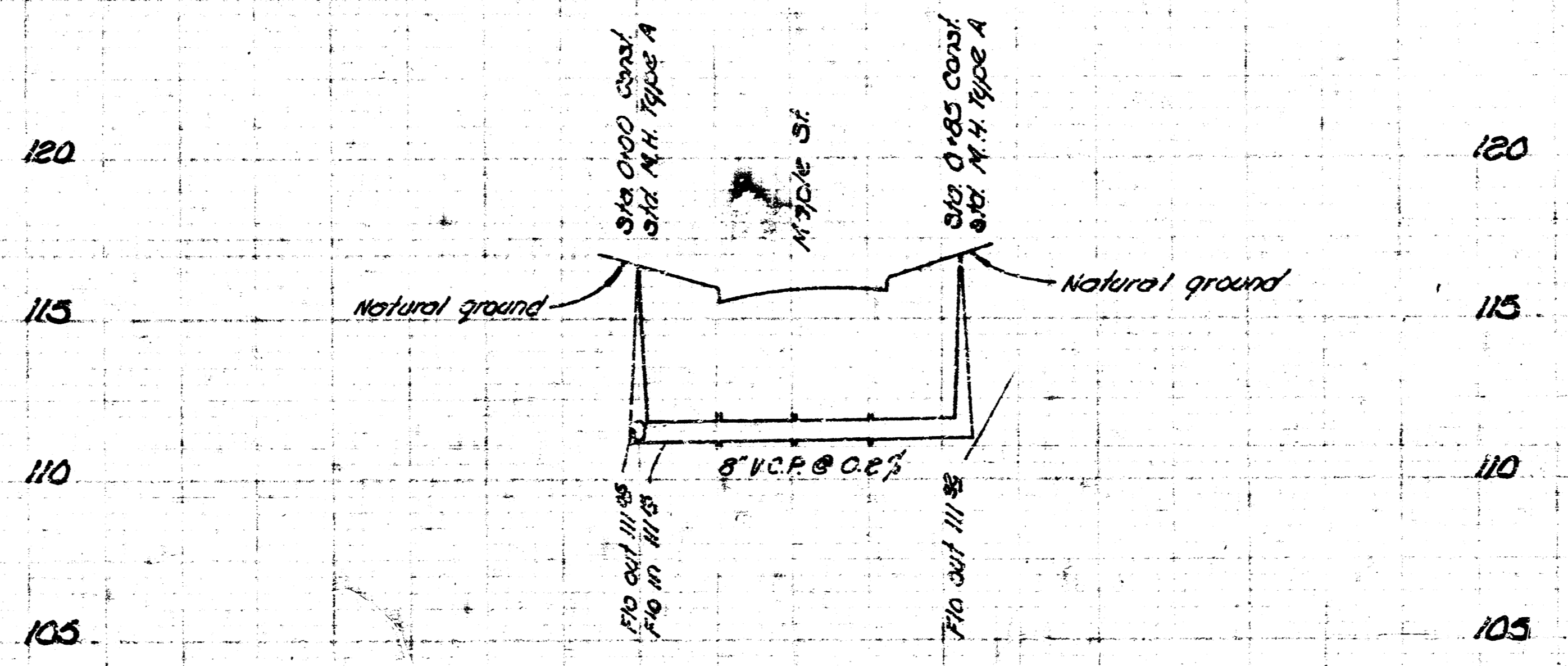
Sta 0+85 const. old M.H. Type A. Install slabs as required for future building connection.

NOTE: THIS SEWER PROJECT IS TO BE COORDINATED WITH THE INSTALLATION OF A WATER LINE ACROSS MAPLE STREET IN THE PAVEMENT REMOVAL AREA AS SHOWN BY THIS PLAN. THE PAVEMENT SHALL NOT BE REPLACED UNTIL THE NECESSARY WATER LINE EXTENSION IS MADE.

NOTE TO CONTRACTOR

This project will be constructed under the supervision of the CITY ENGINEER and conforming to the SPECIFICATIONS of the CITY OF WICHITA. The CONTRACTOR will reimburse the City of Wichita for all cost of Engineering Plans and Inspection.

Plan Scale 1"=40'
 Profile Scale 1"=40' Hor.
 1"=5' Vert.



Sanitary Sewer
Star Lumber Co. 4th Addition
 City of Wichita, Kansas
 R. W. Linn City Engineer
 Project No. BHKB503057
 Private Contract Date: Nov. 1957