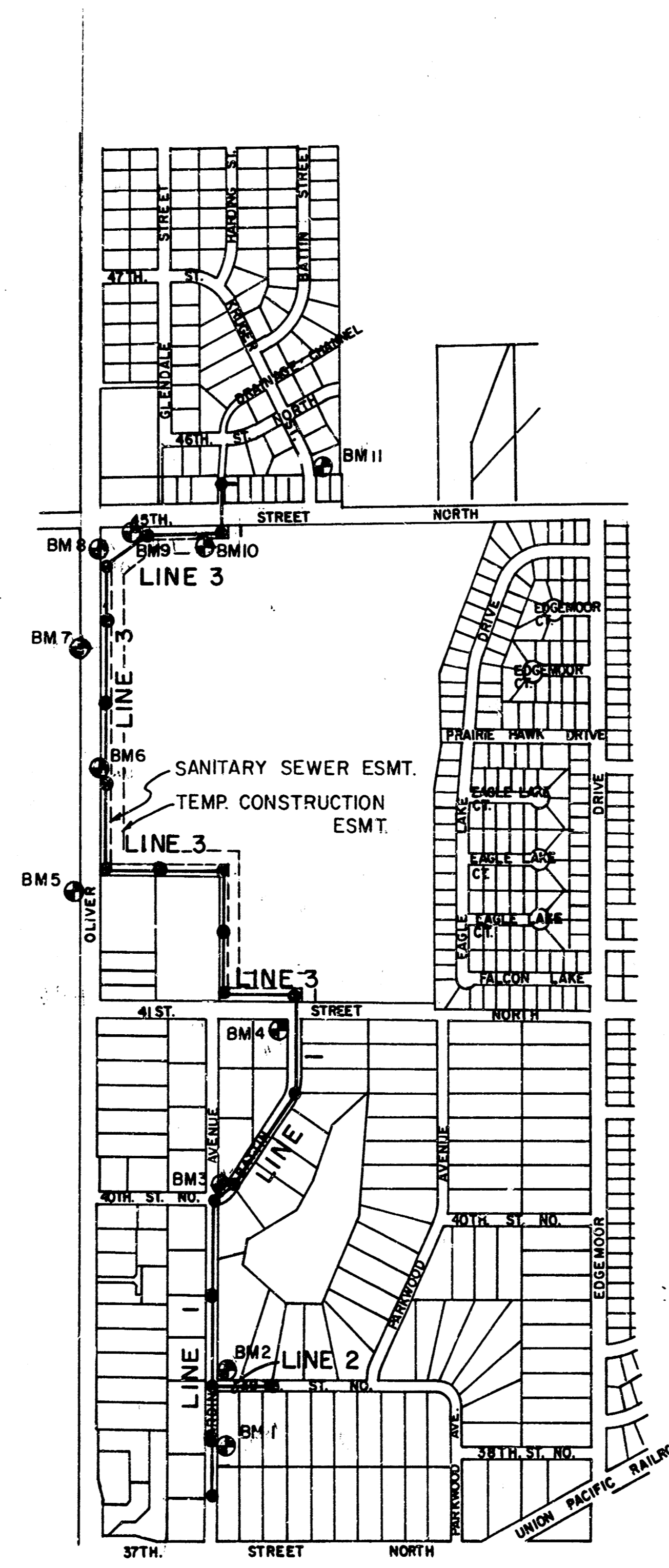


PLANS FOR
SANITARY SEWER MAIN IN BEL AIRE
37TH. STREET NORTH TO 45TH. STREET NORTH

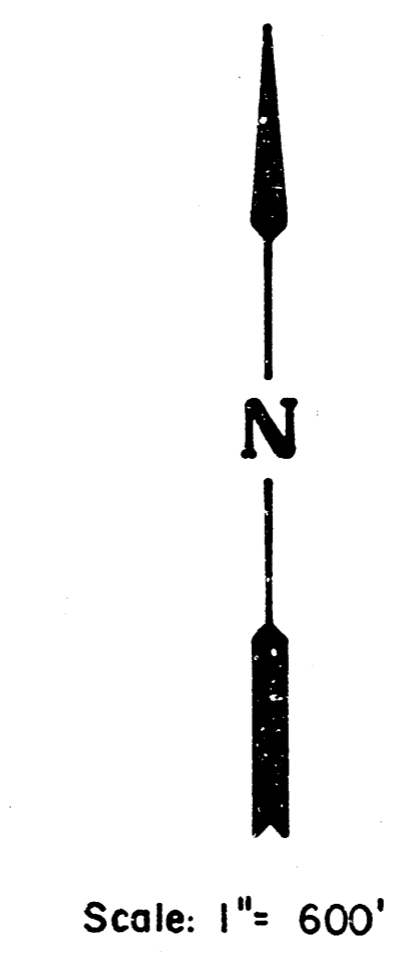
CITY OF BEL AIRE
 SEDGWICK COUNTY, KANSAS

GENERAL NOTES

1. ALL CONSTRUCTION AND MATERIALS TO COMPLY WITH THE SPECIFICATIONS.
2. INTERURBAN TRAFFIC GENERATED OUTSIDE THE PROJECT AREA AND LOCAL TRAFFIC GENERATED WITHIN THE PROJECT AREA ARE TO BE CARRIED THROUGH CONSTRUCTION ON EXISTING ROADWAYS AT ALL TIMES. VEHICULAR ACCESS TO ALL DWELLINGS IN THE PROJECT AREA SHALL BE PROVIDED AT ALL TIMES. THE CONTRACTOR SHALL ERECT WARNING SIGNS, FLASHING LIGHTS, AND BARRICADES IN COMPLIANCE WITH THE STANDARD SPECIFICATIONS.
3. THE CONTRACTOR SHALL LIMIT THE EXTENT OF TRENCH TO REMAIN OPEN OVERNIGHTS AND WEEKENDS TO LESS THAN 50 FEET.
4. THE CONTRACTOR WILL BE REQUIRED TO PROVIDE A MINIMUM ADVANCE NOTICE OF FORTY (40) HOURS TO UTILITY AND PIPELINE COMPANIES PRIOR TO STARTING ANY EXCAVATION AS FOLLOWS:
 KANSAS ONE-CALL 1-800-344-7233
 THE CONTRACTOR MUST NOTIFY THE FOLLOWING IN CASE OF AN EMERGENCY:
 CITY OF BEL AIRE 744-2000 or 744-2451
 CARLEVISION 262-4270 or 263-2061
 KPL GAS SERVICE COMPANY 263-7511
 KANSAS GAS & ELECTRIC 264-1141
 SOUTHWESTERN BELL TELEPHONE COMPANY 1-571-2611
 CITY OF WICHITA WATER OR SEWER DEPT. 268-4908
 WILLIAMS NATURAL GAS COMPANY 524-0491 or 524-4290
5. EXISTING UTILITIES AND THEIR LOCATIONS, AS SHOWN ON THE PLANS, REPRESENT THE BEST INFORMATION OBTAINABLE FOR DESIGN. LOCATION INFORMATION HAS BEEN OBTAINED FROM THE VARIOUS UTILITY COMPANIES AND IS EITHER FROM COMPANY RECORD DRAWINGS OR COMPANY PROVIDED FIELD LOCATIONS. THE PLAN LOCATIONS SHOWN ARE NOT GUARANTEED. ADDITIONAL EXISTING UTILITIES MAY ALSO BE ENCOUNTERED. UNDERGROUND UTILITY LINES ARE TO BE ADJUSTED DURING CONSTRUCTION AS NOTED ON THE PLANS BY EITHER ITS OWNER OR THE CONTRACTOR. THE CONTRACTOR WILL BE REQUIRED TO PROTECT AND WORK AROUND EXISTING UTILITIES WHICH DO NOT CONFLICT WITH PROPOSED CONSTRUCTION.
6. THE CONTRACTOR SHALL RESTORE ALL DITCHES, CHANNELS, BANK STABILIZATION, SHOULDER, ROAD SHOULDERS, RIP-RAP, PAVEMENT, ENTRANCES, AND BANKS TO THEIR ORIGINAL SLOPES AND GRADES. WHERE EXISTING ENTRANCE PIPE, DRAINAGE PIPE, SPRINKLER SYSTEMS, SIDEWALKS, DRIVES, SIGNS, FENCES, ETC., CONFLICT WITH THE PROPOSED WORK HEREIN THEY SHALL BE REMOVED AND REPLACED OR RESET IN PLACE.
7. TREES AND SHRUBS IN THE PUBLIC RIGHT-OF-WAY WHICH ARE IN DIRECT CONFLICT WITH PROPOSED NEW CONSTRUCTION SHALL BE REMOVED BY THE CONTRACTOR WITH THE ENGINEER'S APPROVAL. TREES AND SHRUBS WHICH ARE NOT IN DIRECT CONFLICT WITH PROPOSED NEW CONSTRUCTION SHALL BE SAVED AND PROTECTED FROM DAMAGE.
8. RUBBLE FROM THE REMOVAL OF MISCELLANEOUS STRUCTURES, DEBRIS AND EXCESS EXCAVATION WHICH IS TO BE WASTED SHALL BE DISPOSED OF ON SITES TO BE PROVIDED BY THE CONTRACTOR. THESE SITES SHALL BE APPROVED BY THE ENGINEER AS TO SUITABILITY, APPEARANCE AND SITE LOCATION. LOCATIONS THAT, IN THE OPINION OF THE ENGINEER, WILL LEAVE AN UNSIGHTLY APPEARANCE WILL NOT BE APPROVED.
9. POSITIVE DRAINAGE SHALL BE PROVIDED FOR ALL AREAS ON OR NEAR SPOIL AREAS. NATURAL DRAINAGEWAYS SHALL BE MAINTAINED.
10. WHERE REMOVAL OF EXISTING FENCES NEXT TO THE CONSTRUCTION IS DEEMED NECESSARY BY THE CONTRACTOR, THE CONTRACTOR SHALL COORDINATE REMOVAL WITH ADJACENT PROPERTY OWNERS. ALL REMOVAL AND RESETTLEMENT OF FENCES SHALL BE CONSIDERED SUBSIDIARY TO OTHER ITEMS OF WORK.
11. THE CONTRACTOR SHALL BE RESPONSIBLE FOR PRESERVING PROPERTY IRONS. THE CONTRACTOR SHALL BE REQUIRED TO RE-ESTABLISH ANY PROPERTY IRONS WHICH ARE DAMAGED OR DESTROYED BY HIS CONSTRUCTION OPERATIONS. SUCH IRONS SHALL BE RE-ESTABLISHED BY A REGISTERED LAND SURVEYOR IN ACCORDANCE WITH STATE LAWS.
12. THE CONTRACTOR SHALL BE RESPONSIBLE FOR MAINTAINING CONTINUOUS FLOW FOR SEWAGE THROUGH CONSTRUCTION. CONTRACTOR'S PROPOSED METHOD FOR MAINTAINING SEWAGE FLOW SHALL BE APPROVED BY THE ENGINEER. COST OF MAINTAINING SEWAGE FLOW THROUGH CONSTRUCTION SHALL BE CONSIDERED SUBSIDIARY TO THE OTHER ITEMS OF WORK.
13. ALL ELEVATIONS SHOWN ARE USGS MSL.
14. FOR CONSTRUCTION IN AREAS WITH GRAVELED SURFACING, THE CONTRACTOR SHALL CAREFULLY REMOVE THE EXISTING SURFACING MATERIAL OVER THE AREA TO BE DISTURBED, AND CONSERVE THE MATERIAL FREE FROM ADMIXTURE WITH OTHER MATERIALS. AFTER TRENCHING AND BACKFILLING IN ACCORDANCE WITH THE APPLICABLE REQUIREMENTS OF THE SPECIFICATIONS, THE GRAVEL SURFACING MATERIAL SHALL BE REPLACED TO A DEPTH AT LEAST EQUAL TO THE UNDISTURBED GRAVEL SURFACING. IF THE GRAVEL TAKEN FROM THE DISTURBED AREA HAS BEEN ALLOWED TO BECOME MIXED WITH OTHER MATERIAL, IT SHALL NOT BE RE-USED BUT SHALL BE REPLACED WITH APPROVED CLEAN GRAVEL. COSTS FOR GRAVEL REPLACEMENT SHALL BE CONSIDERED AS SUBSIDIARY TO OTHER ITEMS OF WORK.
15. MAILBOXES WITHIN THE LIMITS OF THE PROJECT SHALL BE REMOVED AND REPLACED BY THE CONTRACTOR AS APPROVED BY THE ENGINEER. CONTRACTOR WILL BE REQUIRED TO MAKE SATISFACTORY PROVISIONS FOR MAIL DELIVERY TO PROPERTIES AFFECTED BY THIS PROJECT DURING ITS CONSTRUCTION. COST SUBSIDIARY TO OTHER ITEMS.
16. THE CONTRACTOR SHALL GIVE ALL PROPERTY OWNERS AND/OR TENANTS OF PROPERTY DIRECTLY AFFECTED BY THE CONSTRUCTION OF THIS PROJECT A MINIMUM OF 5 DAYS ADVANCE NOTICE PRIOR TO START OF CONSTRUCTION.
17. ALL EXISTING GRASSED AREAS WHICH ARE DISTURBED OR DAMAGED DURING CONSTRUCTION OPERATIONS SHALL BE RESTORED TO ORIGINAL CONDITIONS AND RESEEDED IN LIKE KIND, UNLESS OTHERWISE NOTED ON THE PLANS. COSTS SHALL BE CONSIDERED SUBSIDIARY TO OTHER ITEMS OF WORK. APPLICATION RATE FOR THE VARIOUS SEED MIXTURES SHALL BE AS APPROVED BY THE ENGINEER. SEEDING SHALL CONFORM TO APPLICABLE REQUIREMENTS OF THE SPECIFICATIONS.
18. SLOPES STEEPER THAN 10 TO 1 SHALL BE MULCHED AS REQUIRED BY STANDARD SPECIFICATIONS. COST OF MULCHING SHALL BE CONSIDERED SUBSIDIARY TO OTHER ITEMS OF WORK.
19. THE COST OF MANHOLE STUB OUTS, WHERE SHOWN ON THE PLANS, SHALL BE SUBSIDIARY TO THE PRICE BID FOR MANHOLE.
20. AT SANITARY SEWER LINE (INCLUDING SERVICE LINES) AND WATER LINE CROSSINGS, THE SEWER LINE SHALL BE CONCRETE ENCASED FOR 10 FT. EACH WAY FROM THE WATER LINE, UNLESS THE SEWER LINE HAS 2 FT. OR MORE CLEARANCE BELOW THE WATER LINE.
21. A PORTION OF EXCESS EXCAVATED MATERIAL SHALL BE MOUNDED AROUND MANHOLES WHICH EXTEND MORE THAN ONE (1) FOOT ABOVE THE EXISTING GROUND. SUCH MOUNDS SHALL BE CONSTRUCTED WITH A SIX (6) FOOT DIAMETER FLAT TOP WITH 4 TO 1 SIDE SLOPES DOWN TO THE ORIGINAL GROUND. THE ELEVATION OF THE FLAT TOP OF THE MOUND SHALL BE 0.4 FOOT BELOW THE TOP OF THE MANHOLE.
22. WHERE SHOWN ON DRAWINGS, GASKETED MANHOLE LIDS SHALL BE INSTALLED WITH REPLACEMENT RUBBER O-RING SELF-SEALING GASKETS. PROVIDE ONE SPARE GASKET FOR EACH MANHOLE FRAME AND COVER INSTALLED. DO NOT INSTALL GASKETS UNTIL AFTER FINAL INSPECTION.
23. AFTER LINE 3 HAS BEEN ACCEPTED BY THE CITY AND AFTER THE PUMP STATION HAS BEEN TURNED OFF, THE EXISTING MANHOLE AT STA 67+53 (ADJACENT TO PUMP STATION) SHALL BE ABANDONED IN PLACE OR REMOVED IN ACCORDANCE WITH SPECIFICATIONS.
24. CONTRACTOR TO PURCHASE CONNECTION PERMITS FOR HOUSE SERVICE FROM CITY OF WICHITA.



LOCATION MAP



APPROVED AS NOTED
 CITY ENGINEER OF WICHITA
 Sanitary Sewers *WRH 5/31/91*
 Storm Sewers _____
 Driveway Approaches _____
 Water Mains _____
 Paving _____

NOTE TO CONTRACTOR
 INSPECTION AND TESTING FOR THIS PROJECT IS TO BE PROVIDED BY A LICENSED CONSULTING ENGINEERING FIRM UNDER CONTRACT WITH THE OWNER/DEVELOPER. SAID INSPECTION TO BE IN ACCORDANCE WITH THE C.E. OF WICHITA STANDARD CONSTRUCTION ENGINEERING PRACTICES AND CERTIFIED BY A LICENSED PROFESSIONAL ENGINEER. NO WORK SHALL BE PERFORMED IN DEDICATED EASEMENTS OR THE PUBLIC RIGHT-OF-WAY BY THE CONTRACTOR WITHOUT SUCH INSPECTION NOR SHALL ANY WORK BE COMMENCED IN DEDICATED EASEMENTS OR PUBLIC RIGHT-OF-WAY WITHOUT WRITTEN AUTHORIZATION BY THE CITY ENGINEER.

INDEX TO DRAWINGS

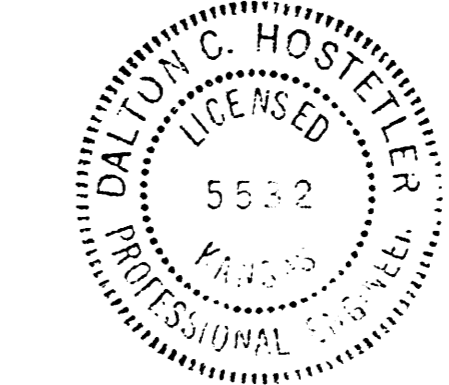
SHEET NO.	DESCRIPTION
1	TITLE SHEET
2-4	LINE 1
5	LINE 2, LINE 3
6-9	LINE 3
10	DETAIL SHEET

BENCHMARKS

- BM#1 - "X" Cut S.E. Cor. Drive at 3815 N. Harding. Elev. = 1373.00
- BM#2 - RR Spike E. Face L.P. N.E. Corner 39th & Harding. Elev. = 1374.495
- BM#3 - RR Spike S. Face L.P. N.E. Corner 40th & Harding. Elev. = 1383.30
- BM#4 - RR Spike E. Face U.P. S.W. Corner 41st & Batten. Elev. = 1396.93
- BM#5 - RR Spike in N.E. Face P.P. on S.W. corner of Oliver & N. entrance to Gospel Assembly. Elev. = 1406.605
- BM#6 - RR Spike in W. Face of T.P. 50' E. of CL Oliver & 1190' N. of 1/4 Section corner @ 41st Street N. Elev. = 1406.605
- BM#7 - RR Spike in E. Face P.P. 630' S. & 47' W. of CL 45th St. N. & Oliver. Elev. = 1403.48
- BM#8 - "X" Cut CL S. End E. Headwall RCB under Oliver 110' S. & 40' E. of CL @ 45th St. N. & Oliver. Elev. = 1397.405
- BM#9 - Disk on W. End S. Hubguard RCB 250' E. & 17' S. of CL at 45th St. N. & Oliver. Elev. = 1398.965
- BM#10 - RR Spike in N. Face P.P. 570' E. & 388' S. of CL 45th St. N. & Oliver. Elev. = 1403.805
- BM#11 - S. Rim MH @ S.W. Corner of Lift Sta. Elev. = 1402.665

As Built 11-21-91
 CITY OF WICHITA PRIVATE PROJECT NO. 287PPS. (607861)

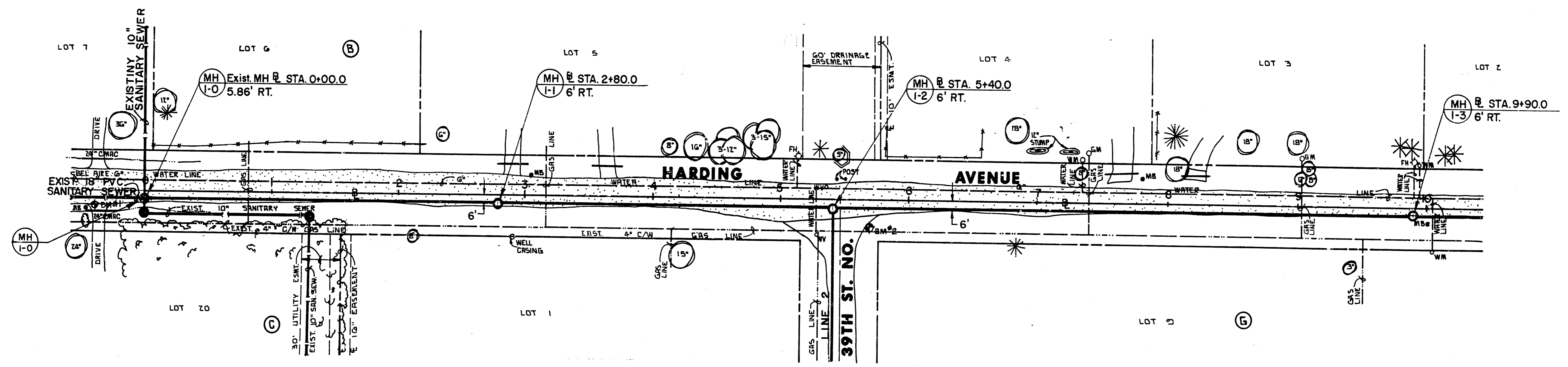
MEC	SANITARY SEWER MAIN IN BEL AIRE 37TH. STREET NORTH TO 45TH. STREET NORTH	Design DSS / DCH Drawn by DLW / KKL Checked by DCH Date MAY, 1991 Job no.
	MID-KANSAS ENGINEERING CONSULTANTS PA 3500 NORTH ROCK ROAD BUILDING #800 WICHITA, KANSAS 67226	Sheet 1 of 10



*Booked
5-4-92
JKB*

SANITARY SEWER MAIN IN BEL AIRE
ON OLIVER-37TH STREET NORTH TO
45TH STREET NORTH

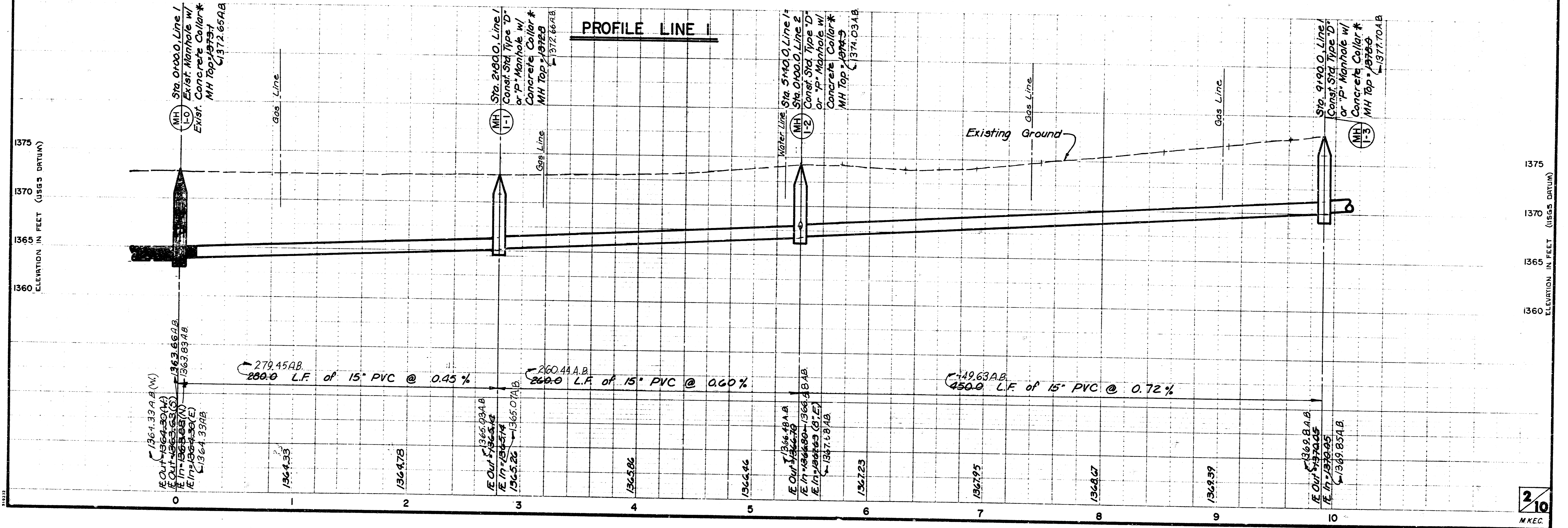
N
Scale: 1" = 40' Horiz.
1" = 5' Vert.



PLAN LINE 1

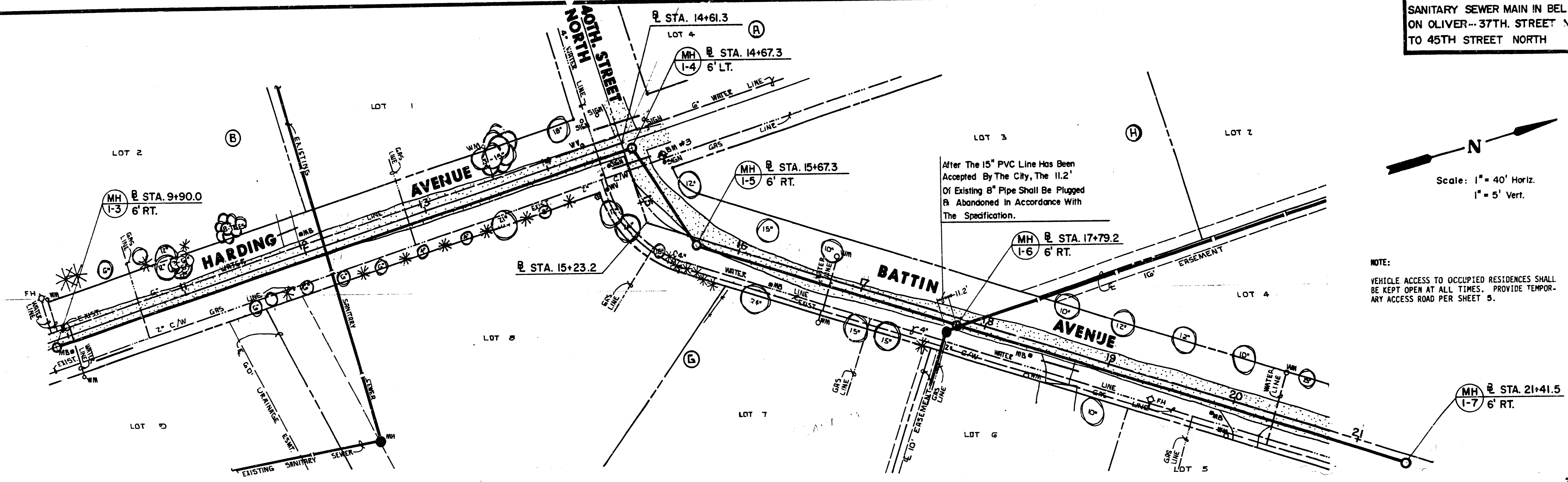
*SEE CONCRETE COLLAR
DETAIL ON SHEET 10

BM1 - "X" Cut S.E. Cor. Drive at 3815 N.
Harding.
Elev. = 1373.00
BM2 - RR Spike E. Face L.P. N.E. Corner
39th & Harding.
Elev. = 1374.495



PROFILE LINE 1

**SANITARY SEWER MAIN IN BEL AIRE
ON OLIVER--37TH STREET NORTH
TO 45TH STREET NORTH**



N
Scale: 1" = 40' Horiz.
1" = 5' Vert.

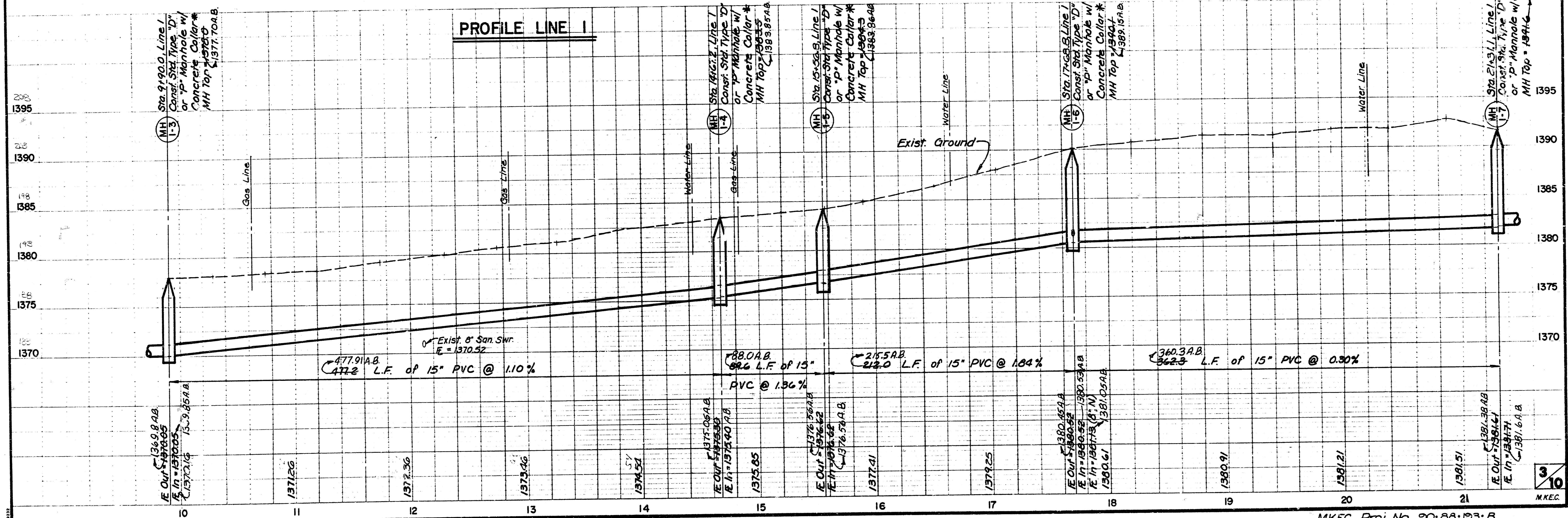
NOTE:
VEHICLE ACCESS TO OCCUPIED RESIDENCES SHALL BE KEPT OPEN AT ALL TIMES. PROVIDE TEMPORARY ACCESS ROAD PER SHEET 5.

PLAN LINE I

*SEE CONCRETE COLLAR
DETAIL ON SHEET 10

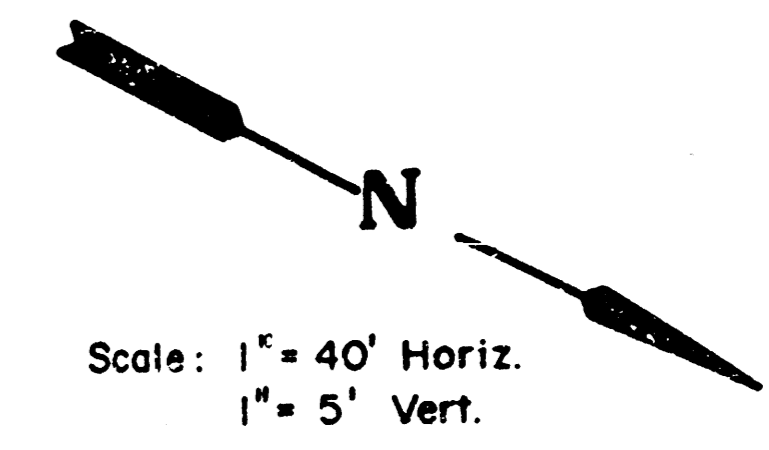
BM3 - RR Spike S. Face L.P. N.E. Corner
40th & Harding.
Elev. = 1383.30

PROFILE LINE I

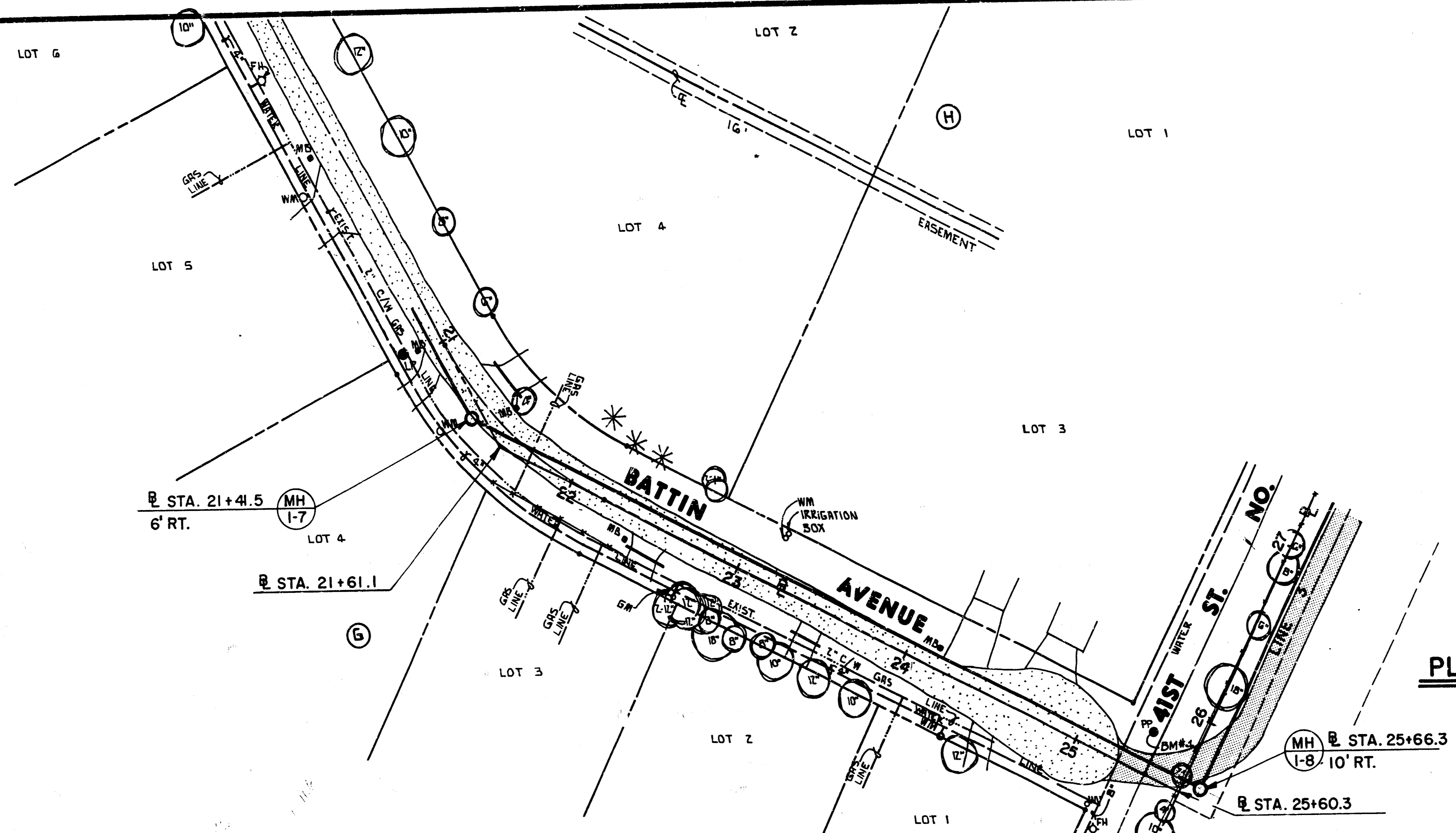


3/10
M.K.C.

SANITARY SEWER MAIN IN BEL AIRE
ON OLIVER--37TH STREET NORTH TO
45TH STREET NORTH



Scale: 1" = 40' Horiz.
1" = 5' Vert.

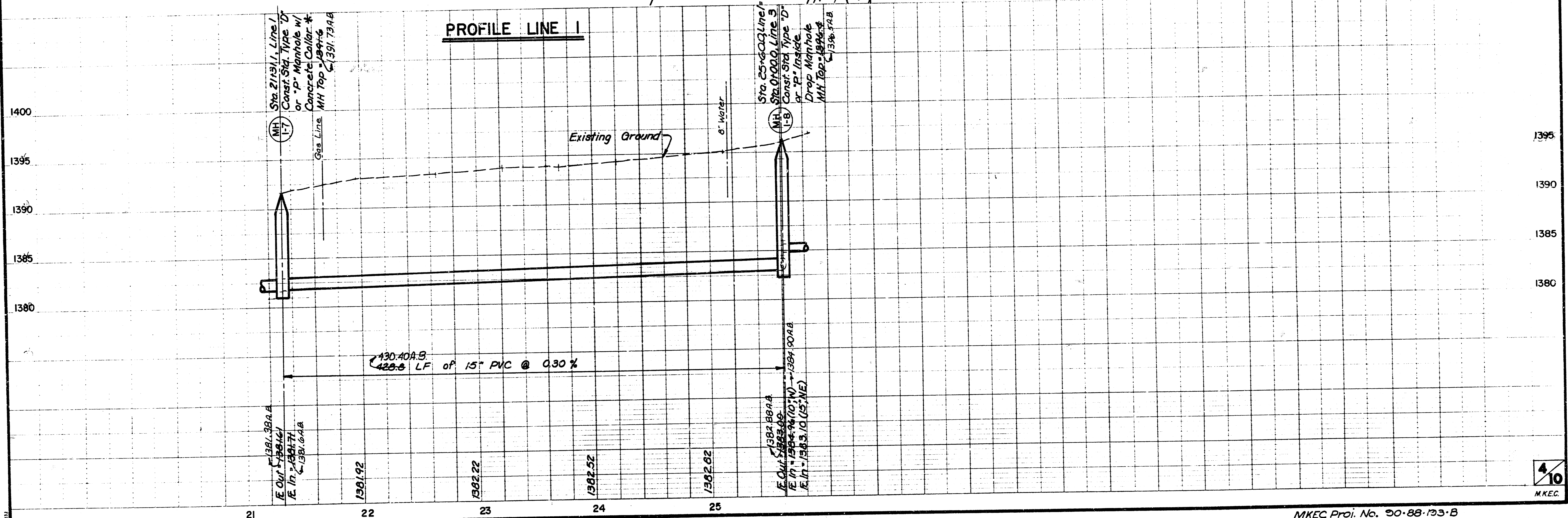


PLAN LINE 1

NOTE:
VEHICLE ACCESS TO OCCUPIED RESIDENCES SHALL
BE KEPT OPEN AT ALL TIMES. PROVIDE TEMPOR-
ARY ACCESS ROAD PER SHEET 2.

BM#4 - RR Spike E. Face U.P. S.W. Corner
41st & Battin.
Elev. = 1396.93

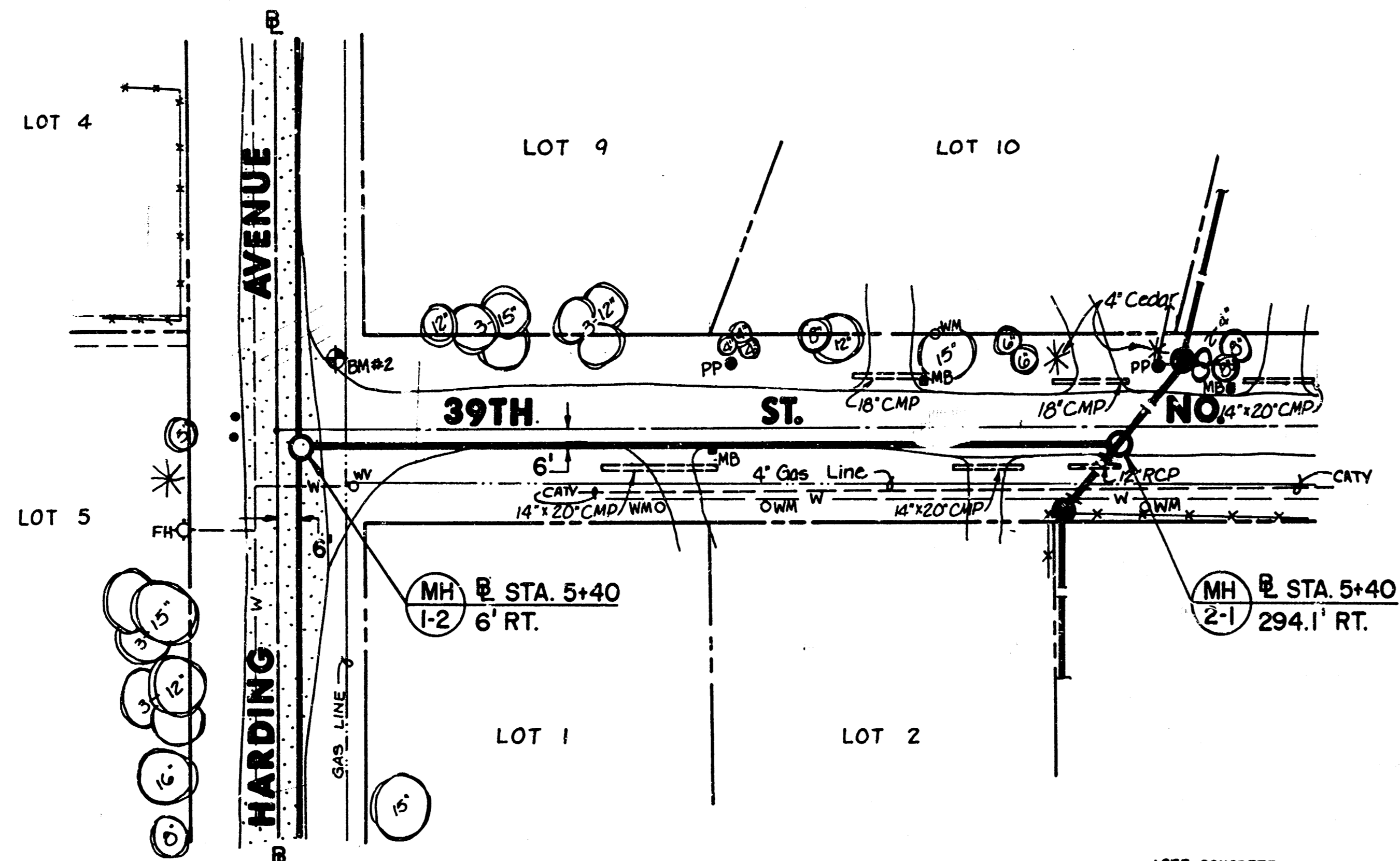
PROFILE LINE 1



**SANITARY SEWER MAIN IN BEL AIR
ON OLIVER-37TH STREET NORTH TO
45TH STREET NORTH**

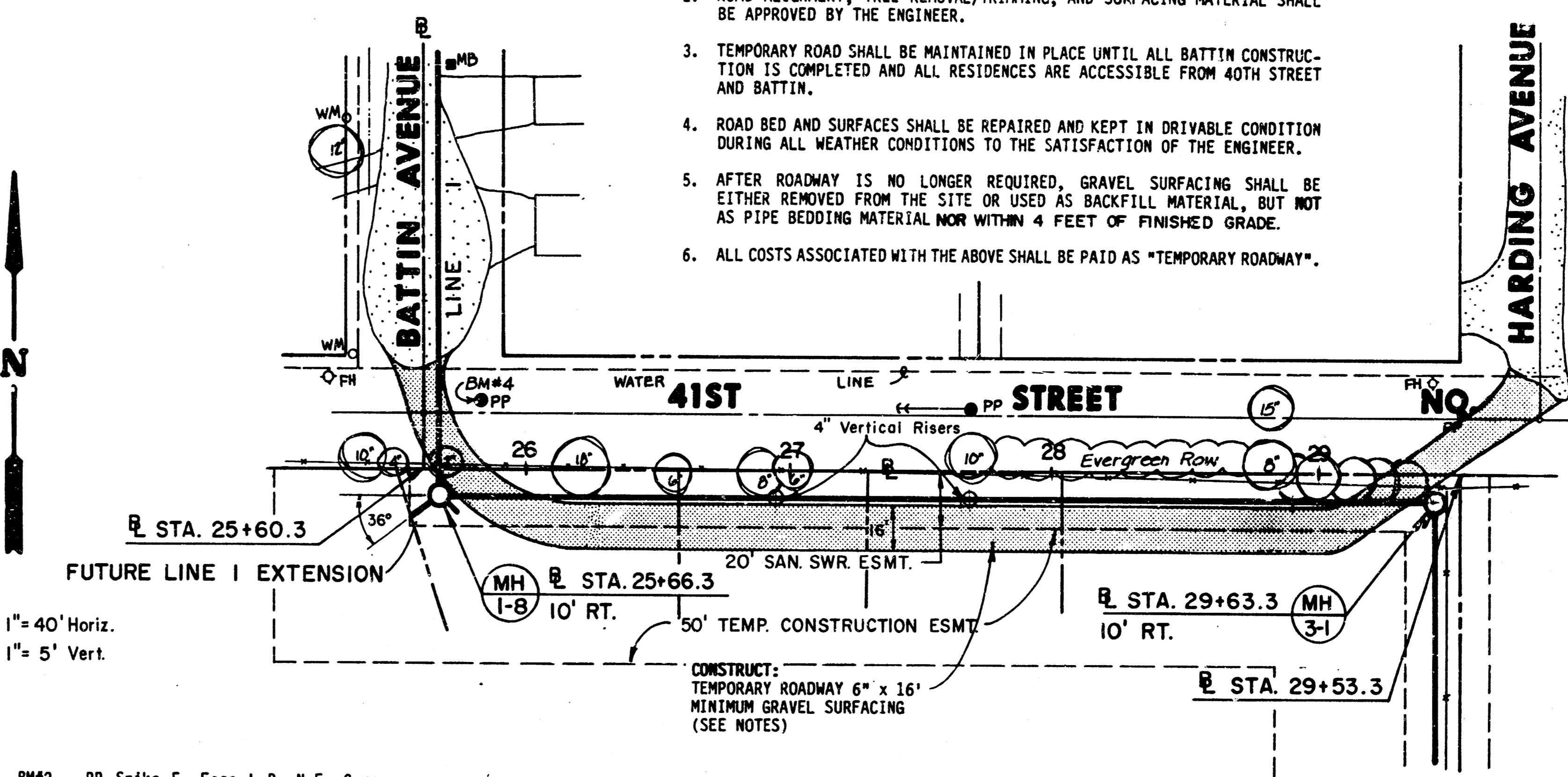
NOTES:

- EMERGENCY AND PRIVATE VEHICLE ACCESS TO OCCUPIED RESIDENCES ALONG BATTIN SHALL BE KEPT OPEN AT ALL TIMES.
- ROAD ALIGNMENT, TREE RE-MOVAL/TRIMMING, AND SURFACING MATERIAL SHALL BE APPROVED BY THE ENGINEER.
- TEMPORARY ROAD SHALL BE MAINTAINED IN PLACE UNTIL ALL BATTIN CONSTRUCTION IS COMPLETED AND ALL RESIDENCES ARE ACCESSIBLE FROM 40TH STREET AND BATTIN.
- ROAD BED AND SURFACES SHALL BE REPAIRED AND KEPT IN DRIVABLE CONDITION DURING ALL WEATHER CONDITIONS TO THE SATISFACTION OF THE ENGINEER.
- AFTER ROADWAY IS NO LONGER REQUIRED, GRAVEL SURFACING SHALL BE EITHER REMOVED FROM THE SITE OR USED AS BACKFILL MATERIAL, BUT NOT AS PIPE BEDDING MATERIAL NOR WITHIN 4 FEET OF FINISHED GRADE.
- ALL COSTS ASSOCIATED WITH THE ABOVE SHALL BE PAID AS "TEMPORARY ROADWAY".



PLAN LINE 2

*SEE CONCRETE COLLAR
DETAIL ON SHEET 10



PLAN LINE 3

Scale: 1" = 40' Horiz.
1" = 5' Vert.

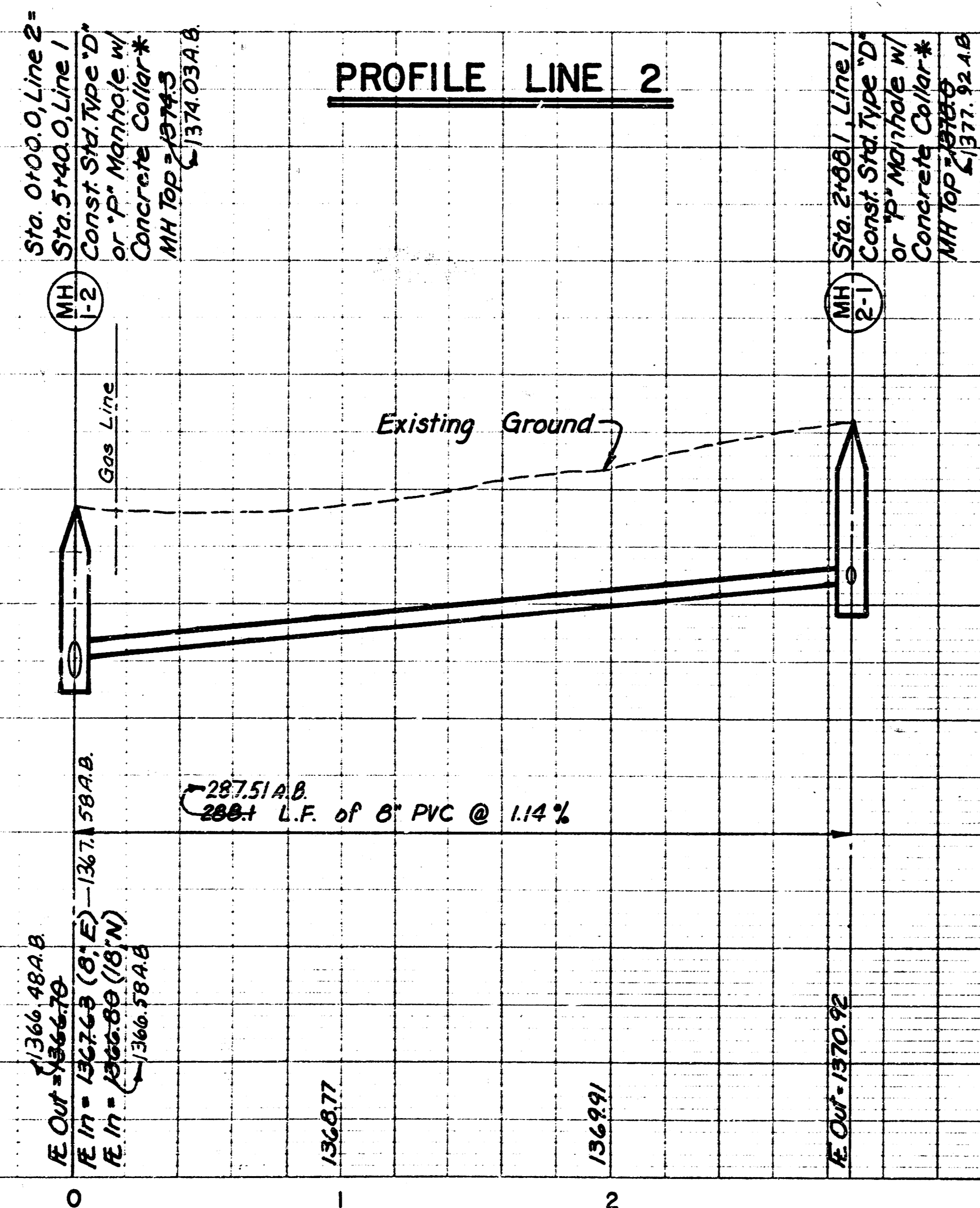
BM#2 - RR Spike E. Face L.P. N.E. Corner
39th & Harding.
Elev. = 1374.495

BM#4 - RR Spike E. Face U.P. S.W. Corner
41st & Battin.
Elev. = 1396.93

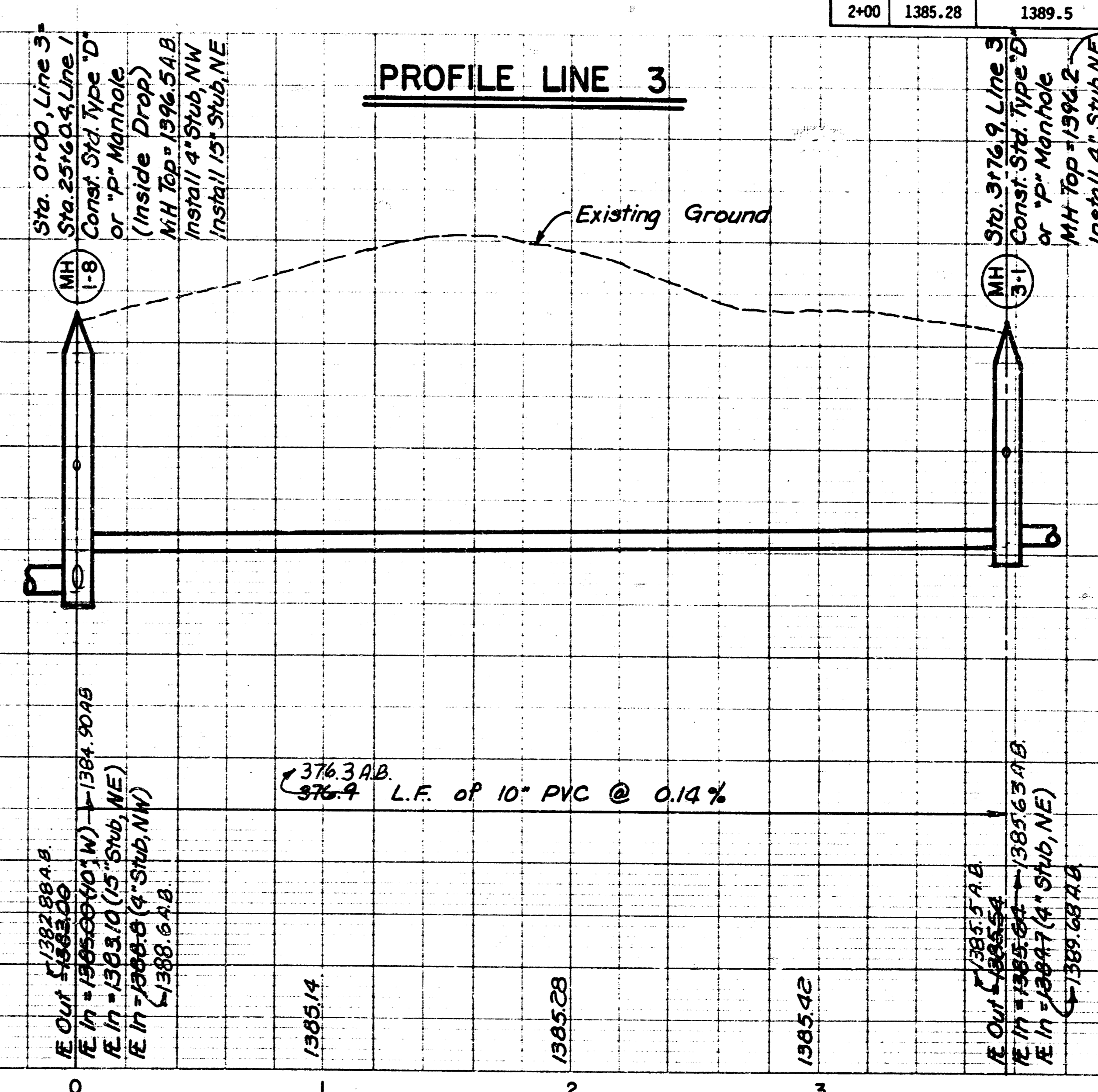
Scale: 1" = 40' Horiz.
1" = 5' Vert.

4" VERTICAL RISERS -- LINE 3

Sta.	FL Elev.	Top of Riser
1+27	1385.18	1389.2
2+00	1385.28	1389.5

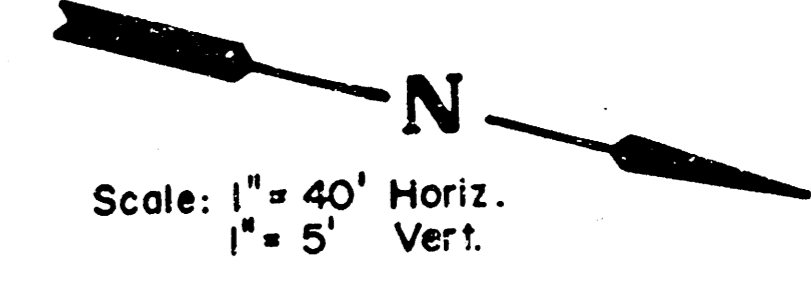


PROFILE LINE 2



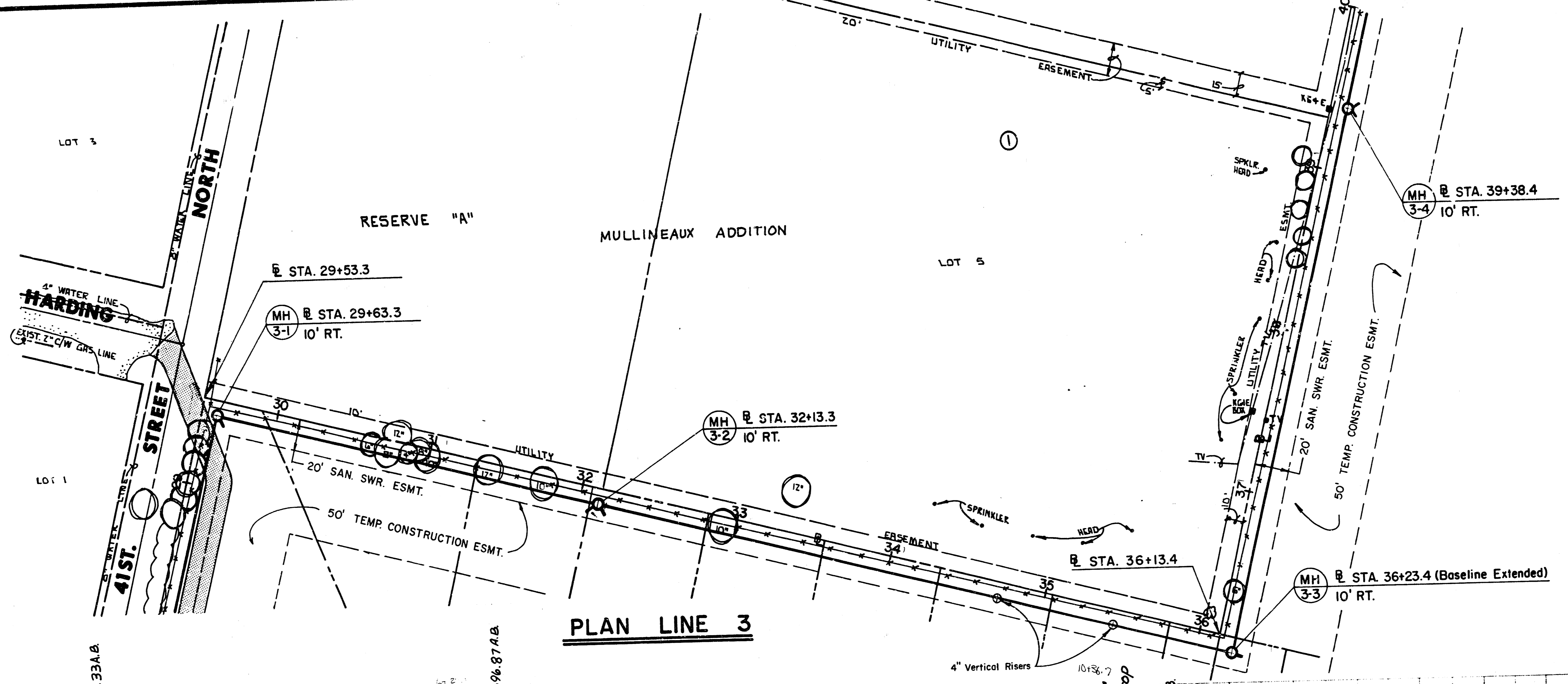
PROFILE LINE 3

SANITARY SEWER MAIN IN BEL AIR
ON OLIVER--37TH STREET NORTH TO
45TH STREET NORTH

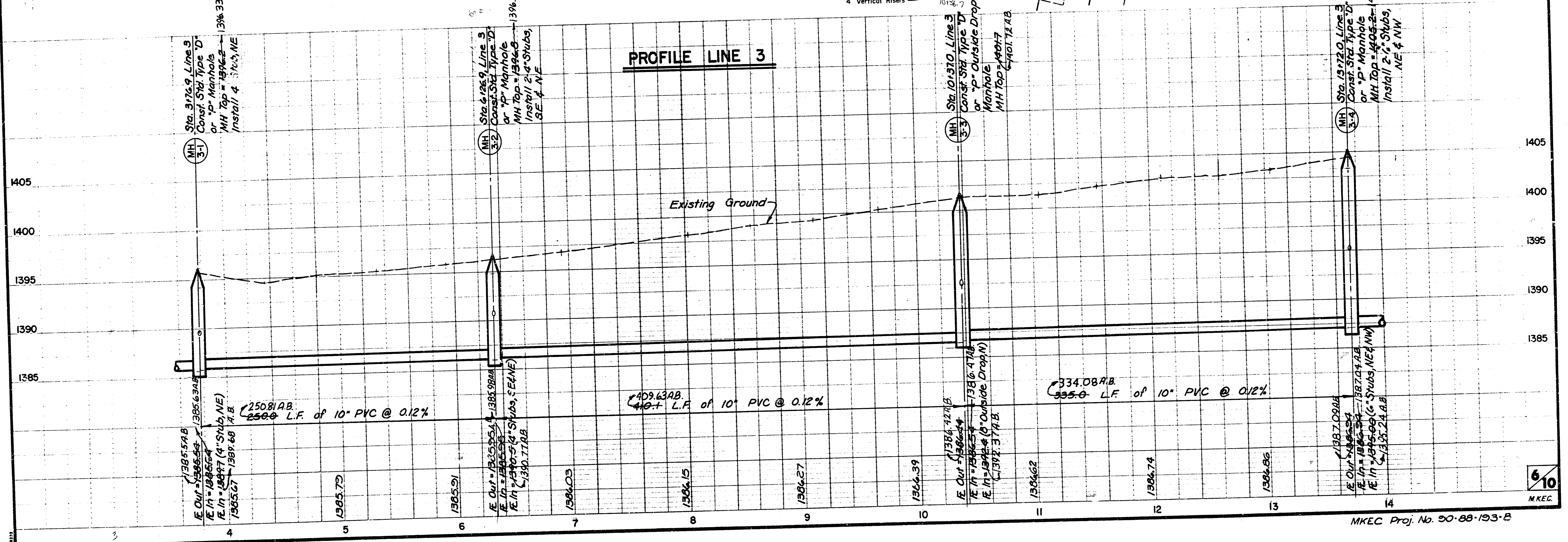


4" VERTICAL RISERS -- LINE 3

Sta.	FL Elev.	Top of Riser
8+85	1386.25	1391.6
9+60	1386.34	1392.0



PLAN LINE 3

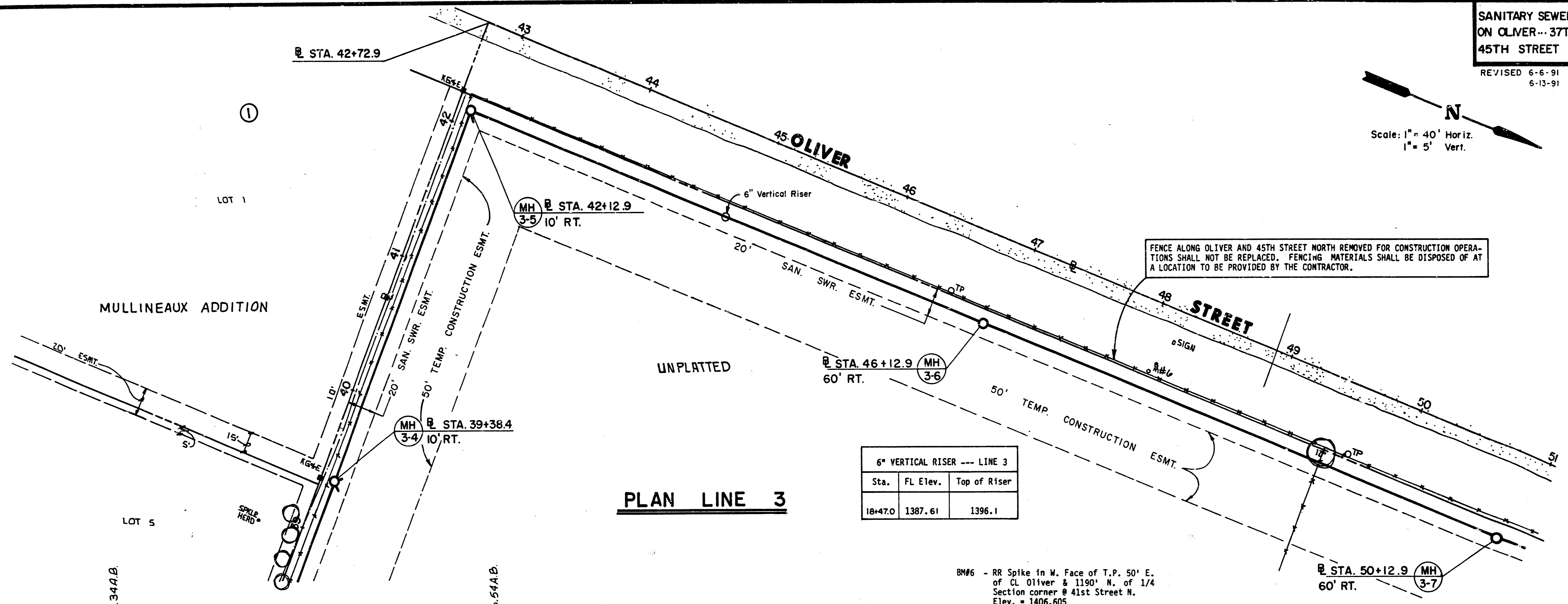
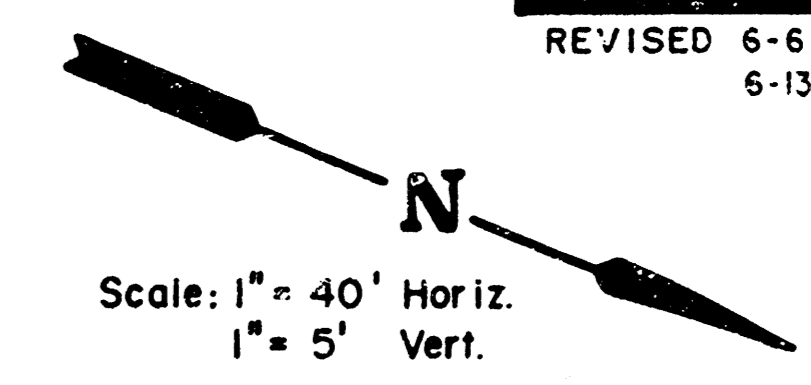


PROFILE LINE 3

6/10
M.K.E.G.

SANITARY SEWER MAIN IN BEL AIRE
ON OLIVER...37TH STREET NORTH TO
45TH STREET NORTH

REVISED 6-6-91
6-13-91

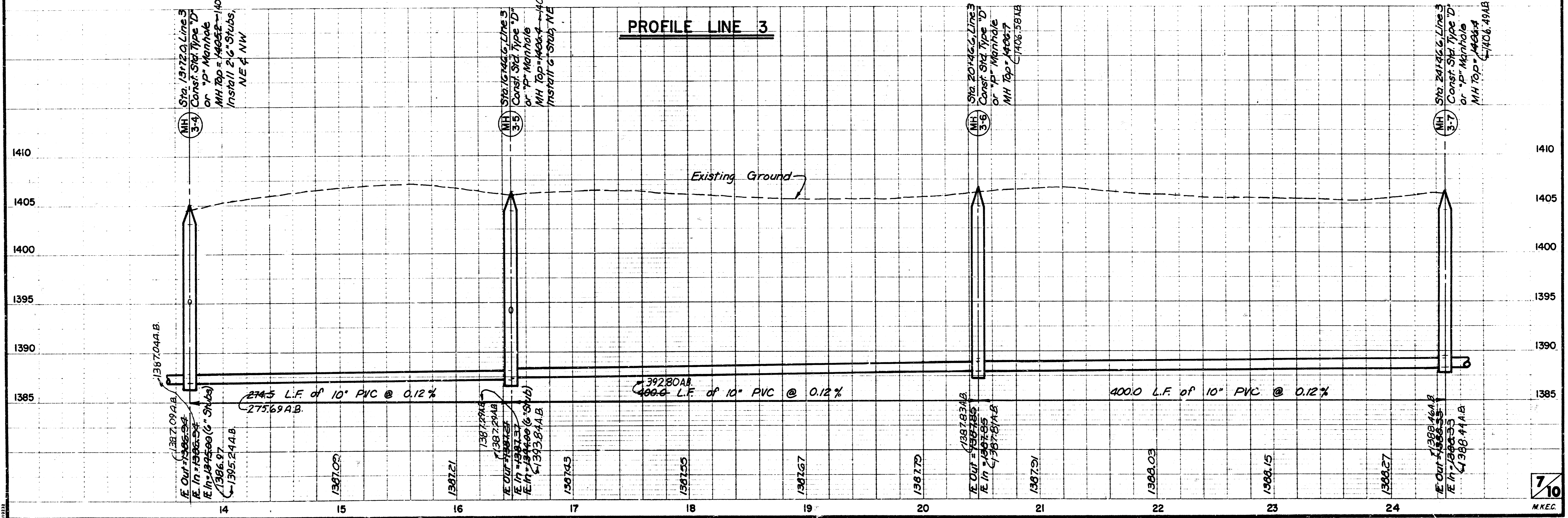


PLAN LINE 3

6" VERTICAL RISER --- LINE 3		
Sta.	FL Elev.	Top of Riser
18+47.0	1387.61	1396.1

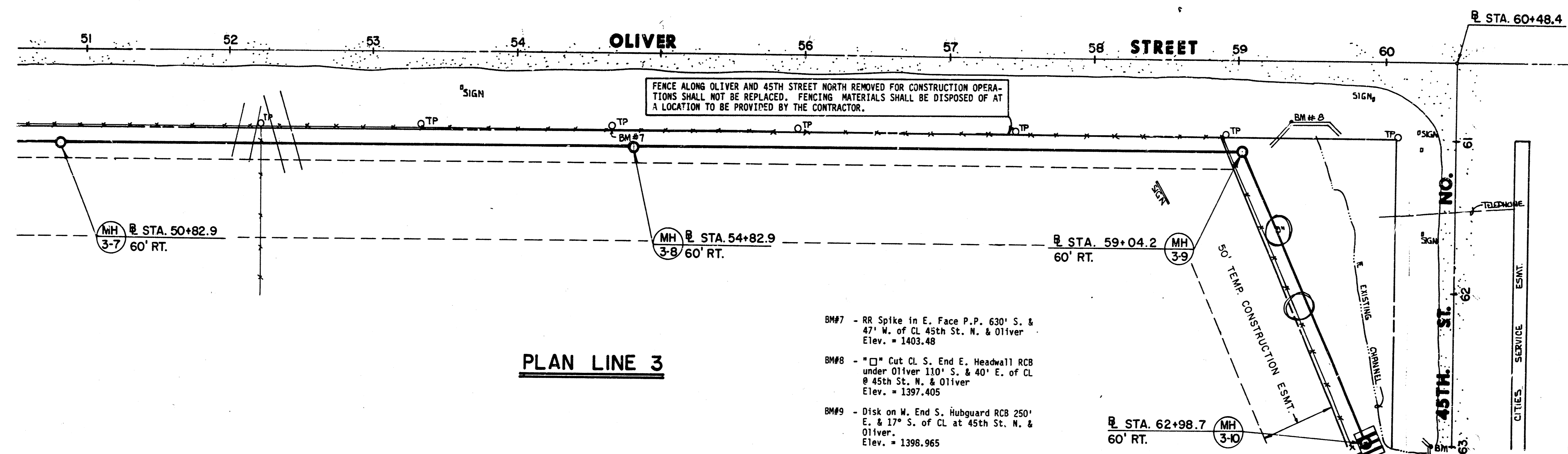
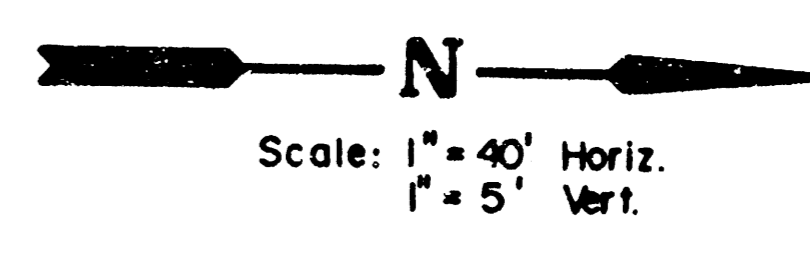
FENCE ALONG OLIVER AND 45TH STREET NORTH REMOVED FOR CONSTRUCTION OPERATIONS SHALL NOT BE REPLACED. FENCING MATERIALS SHALL BE DISPOSED OF AT A LOCATION TO BE PROVIDED BY THE CONTRACTOR.

BM#6 - RR Spike in W. Face of T.P. 50' E. of CL Oliver & 1190' N. of 1/4 Section corner @ 41st Street N. Elev. = 1406.605



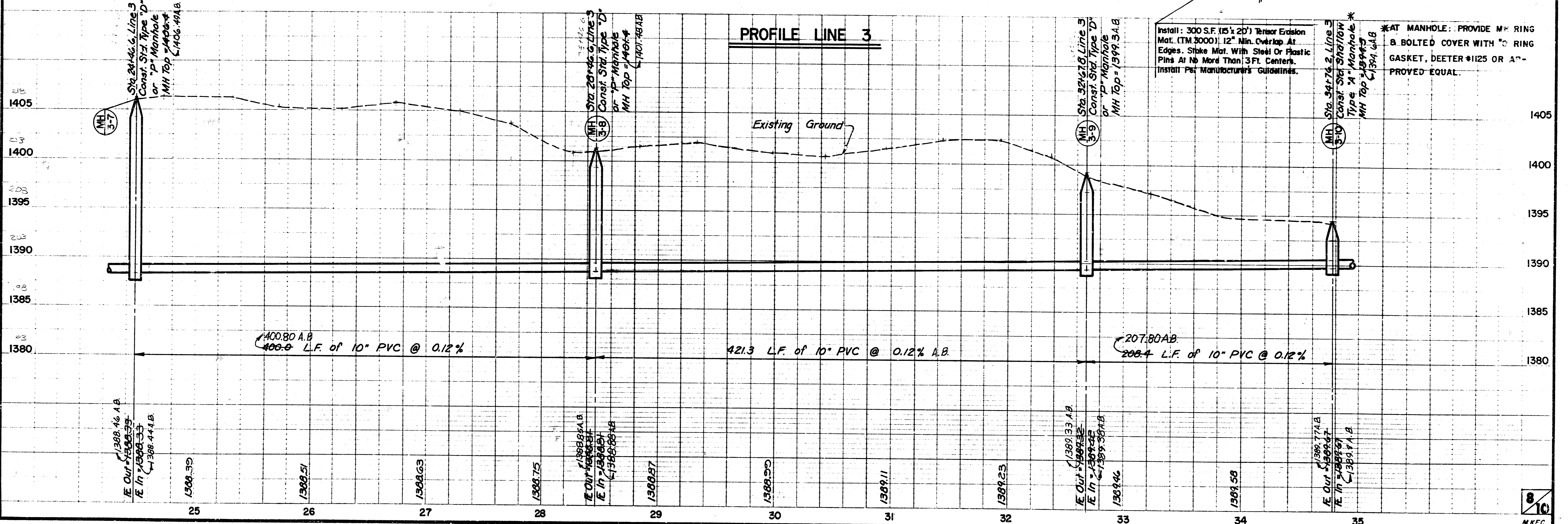
PROFILE LINE 3

SANITARY SEWER MAIN IN BEL AIR
ON OLIVER...37TH. STREET NORTH TO
45TH STREET NORTH
REVISED 6-18-91



PLAN LINE 3

- BM#7 - RR Spike in E. Face P.P. 630' S. & 47' W. of CL 45th St. N. & Oliver Elev. = 1403.48
- BM#8 - " " Cut CL S. End E. Headwall RCB under Oliver 110' S. & 40' E. of CL @ 45th St. N. & Oliver Elev. = 1397.405
- BM#9 - Disk on W. End S. Hubguard RCB 250' E. & 17" S. of CL at 45th St. N. & Oliver. Elev. = 1398.965



PROFILE LINE 3

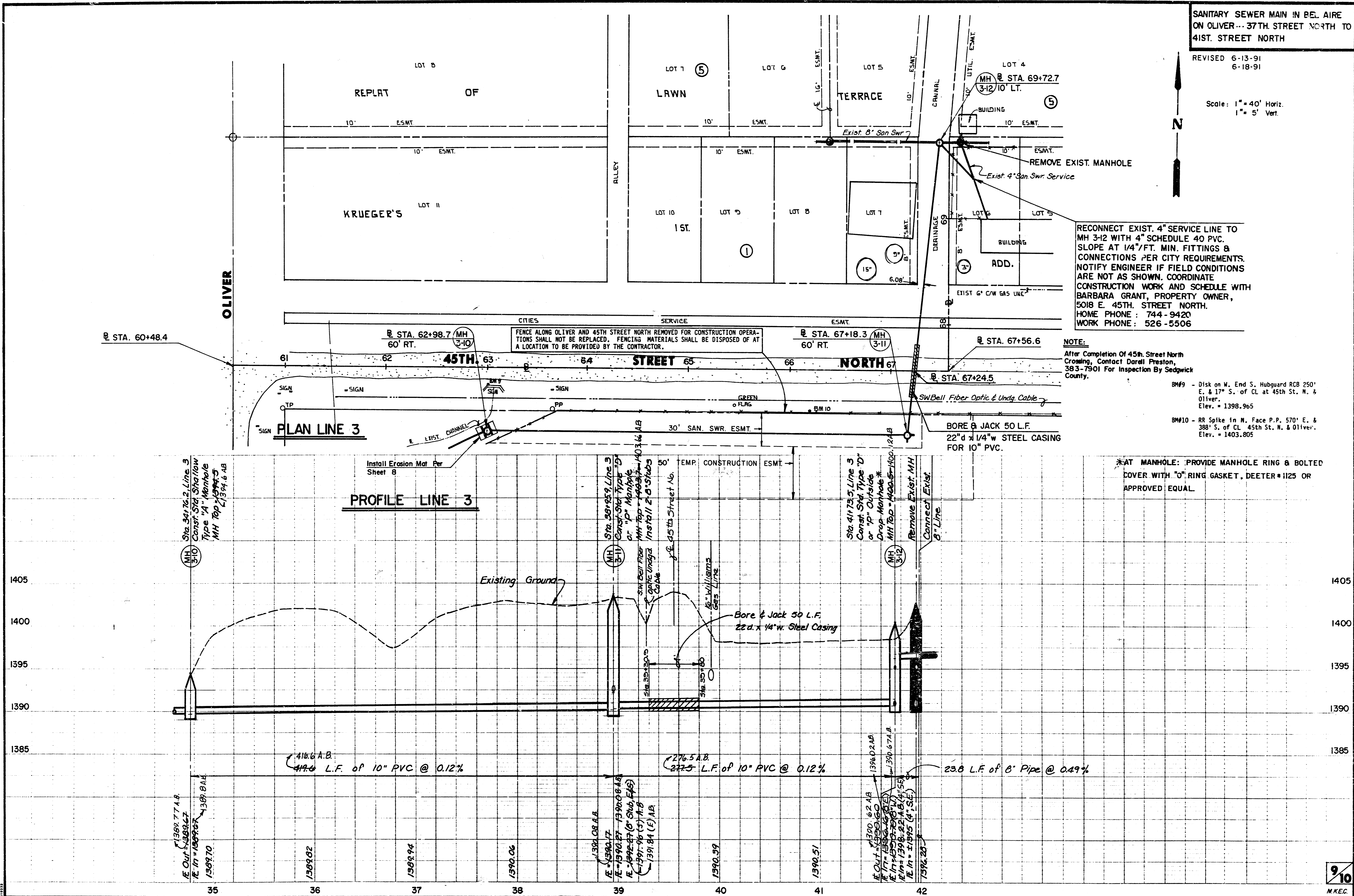
Install: 300 S.F. (15' x 20') Rensselaer Edison Mat. (TM 3000) 12" Min. Overlap At Edges. Stake Mat. With Steel Or Plastic Pins At No More Than 3 Ft. Centers. Install Per Manufacturer's Guidelines.

*AT MANHOLE: PROVIDE M- RING & BOLTED COVER WITH "O" RING GASKET, DEETER #125 OR APPROVED EQUAL.

SANITARY SEWER MAIN IN BEL. AIRE
ON OLIVER... 37TH STREET NORTH TO
41ST STREET NORTH

REVISED 6-13-91
6-18-91

Scale: 1" = 40' Horiz.
1" = 5' Vert.

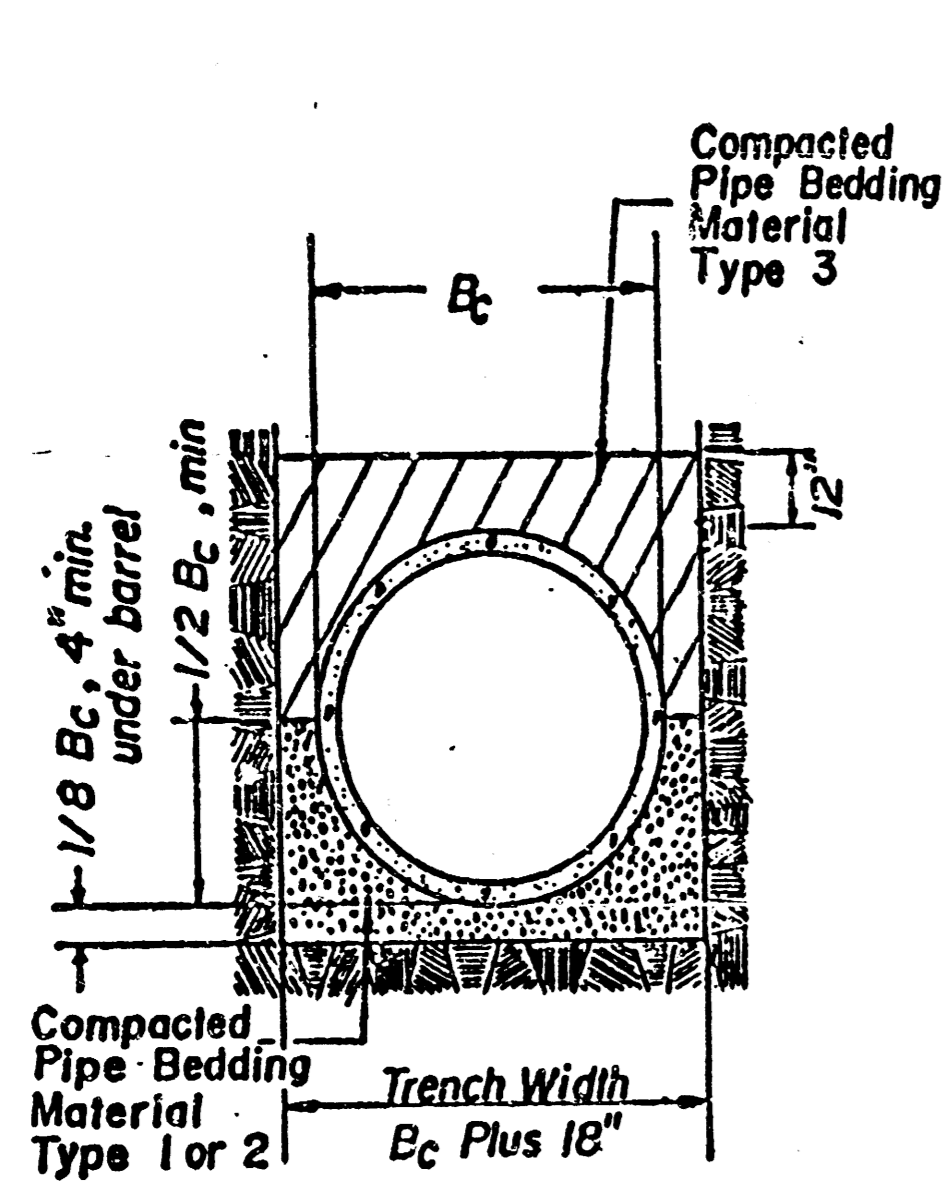


RECONNECT EXIST. 4" SERVICE LINE TO
MH 3-12 WITH 4" SCHEDULE 40 PVC.
SLOPE AT 1/4" FT. MIN. FITTINGS &
CONNECTIONS PER CITY REQUIREMENTS.
NOTIFY ENGINEER IF FIELD CONDITIONS
ARE NOT AS SHOWN. COORDINATE
CONSTRUCTION WORK AND SCHEDULE WITH
BARBARA GRANT, PROPERTY OWNER,
5018 E. 45TH STREET NORTH.
HOME PHONE: 744-9420
WORK PHONE: 526-5506

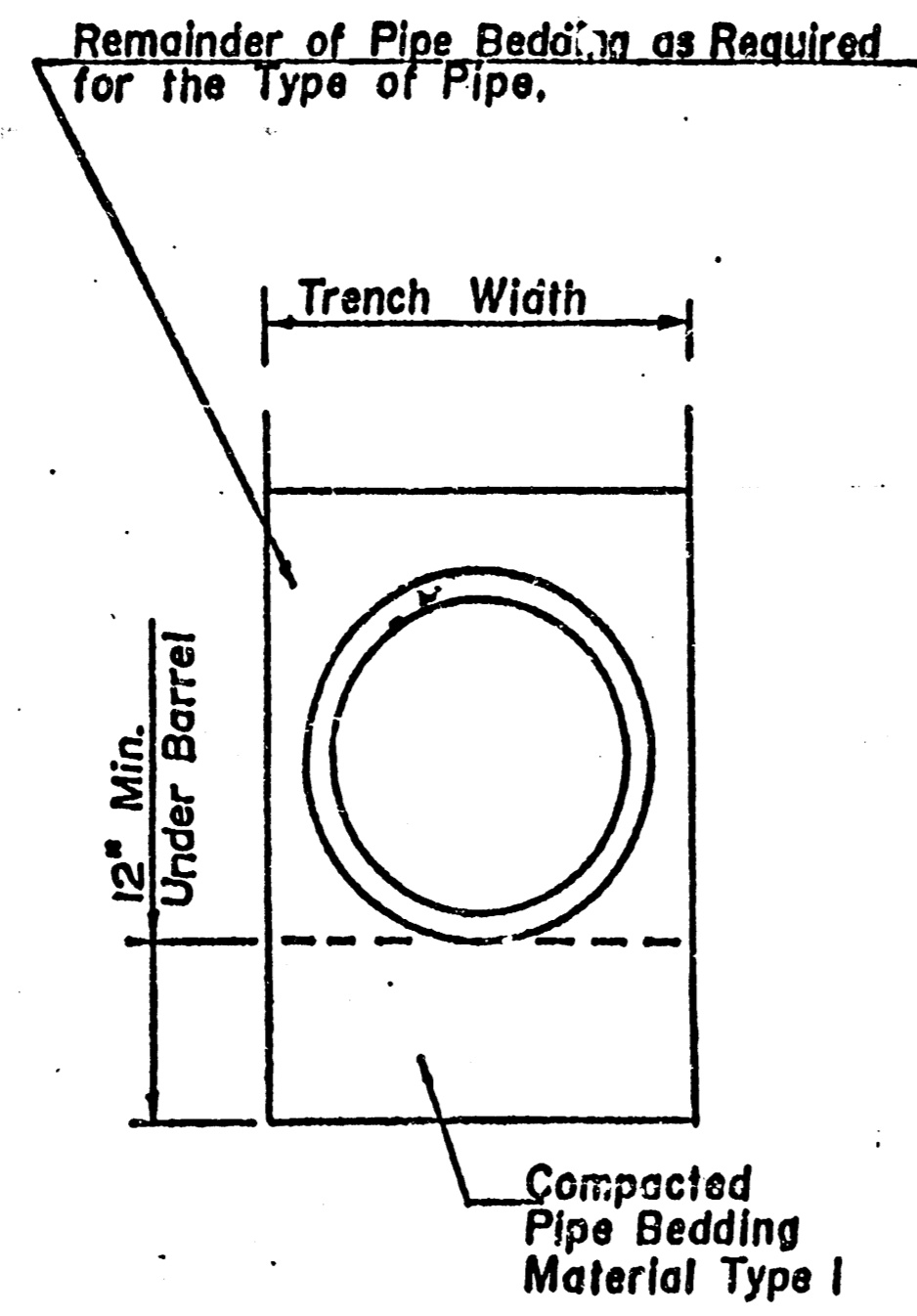
NOTE:
After Completion Of 45th Street North
Crossing, Contact Darrell Preston,
383-7901 For Inspection By Sedgwick
County.

- BM#9 - Disk on W. End S. Hubguard RCB 250' E. & 17' S. of CL at 45th St. N. & Oliver. Elev. = 1398.965
- BM#10 - RR Spike in N. Face P.P. 570' E. & 388' S. of CL 45th St. N. & Oliver. Elev. = 1403.805

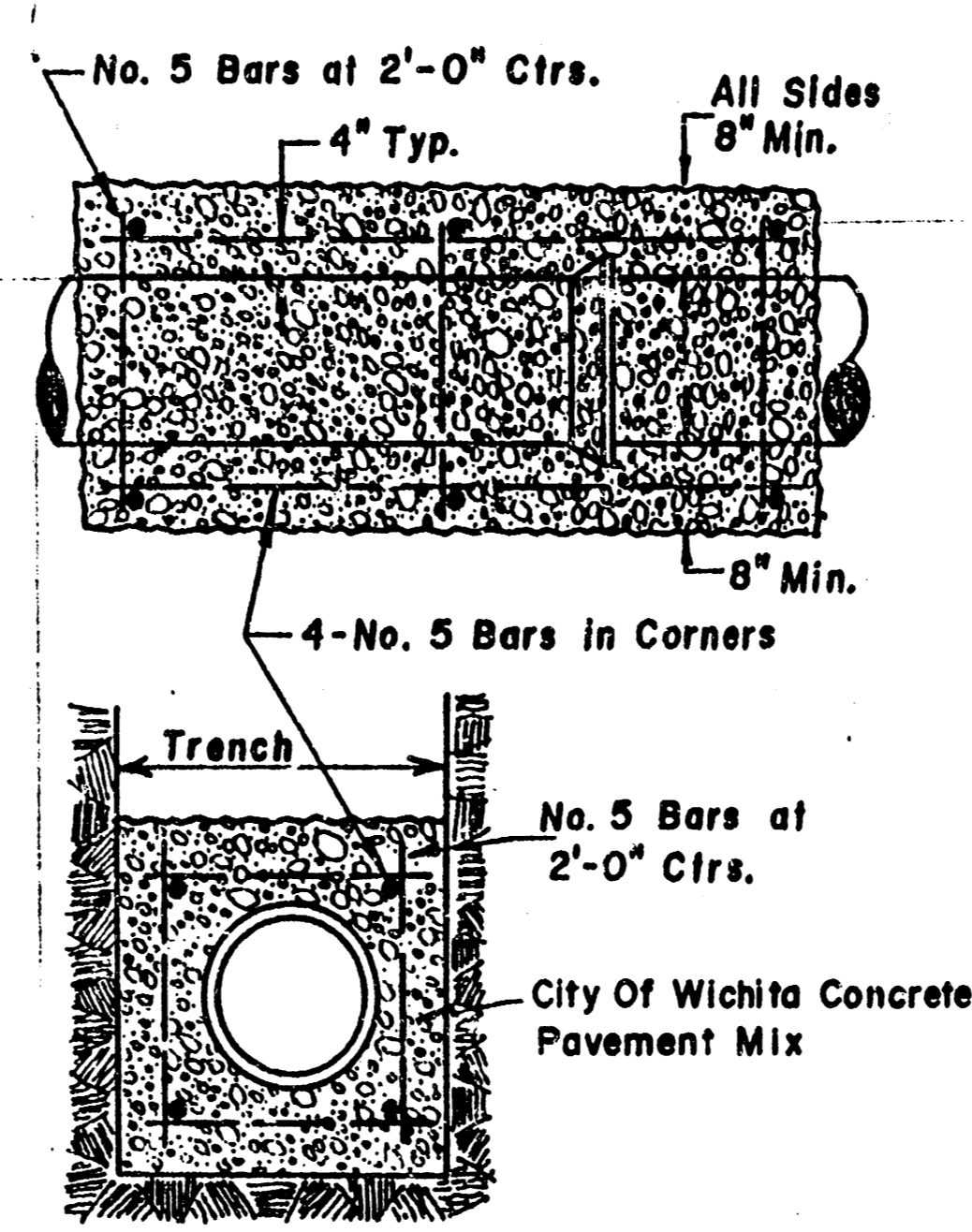
*AT MANHOLE: PROVIDE MANHOLE RING & BOLTED COVER WITH "O" RING GASKET, DEETER #1125 OR APPROVED EQUAL.



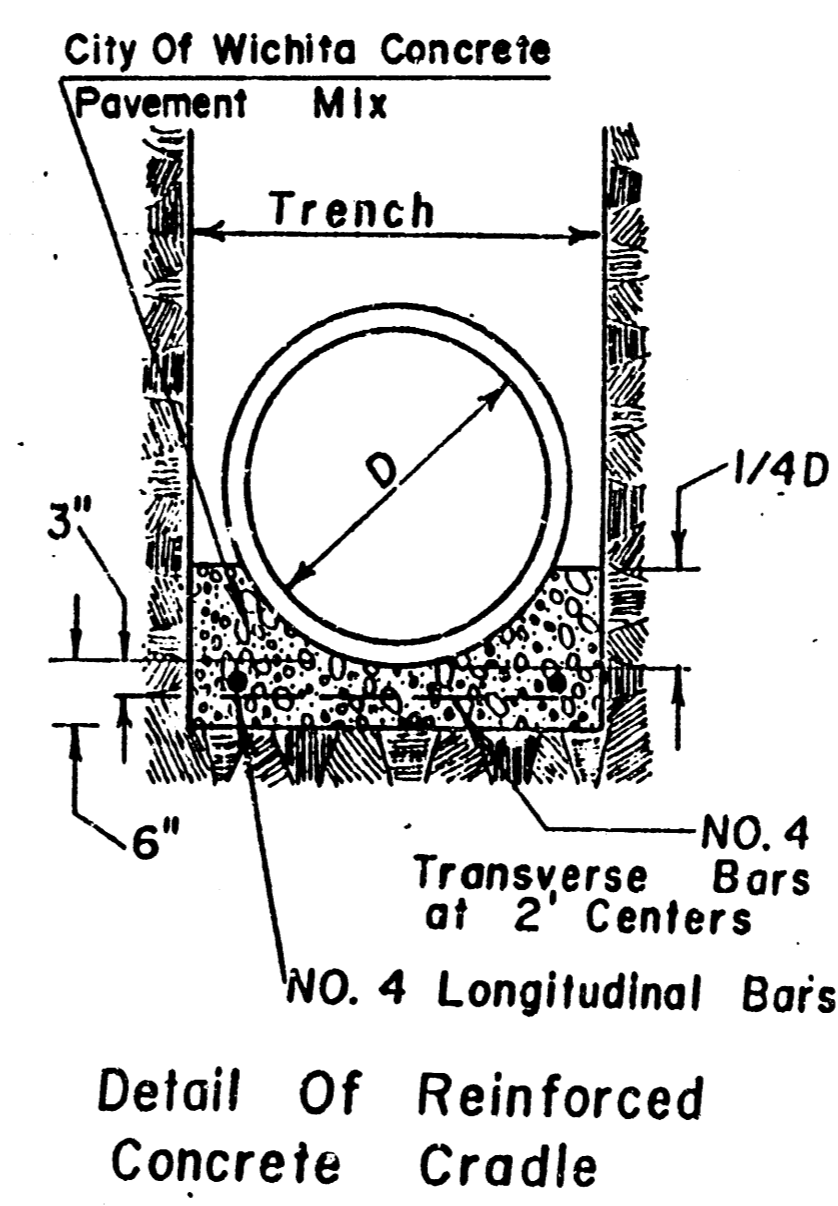
Detail Of Improved Bedding For P.V.C. Or P.V.C. Composite Pipe.



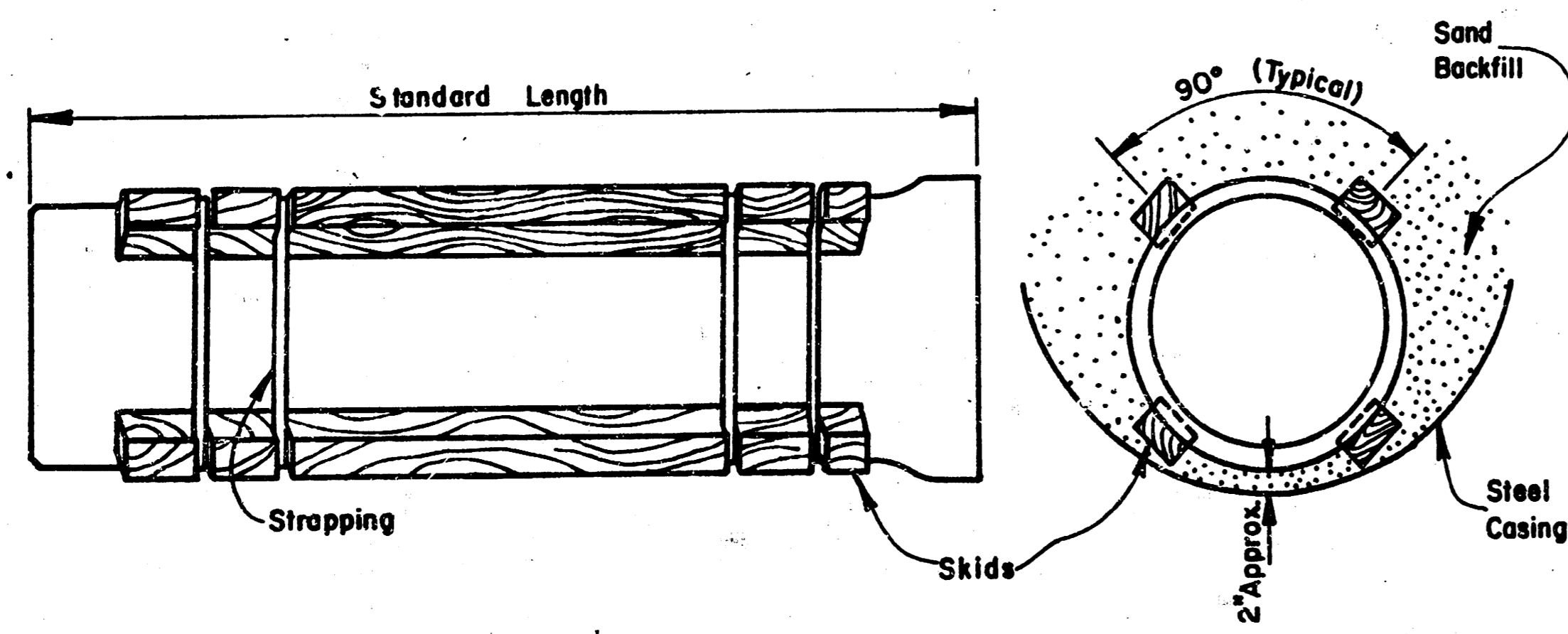
Detail of Trench Stabilization, Required When Trench is Wet or Unstable or When Dewatering is Required.



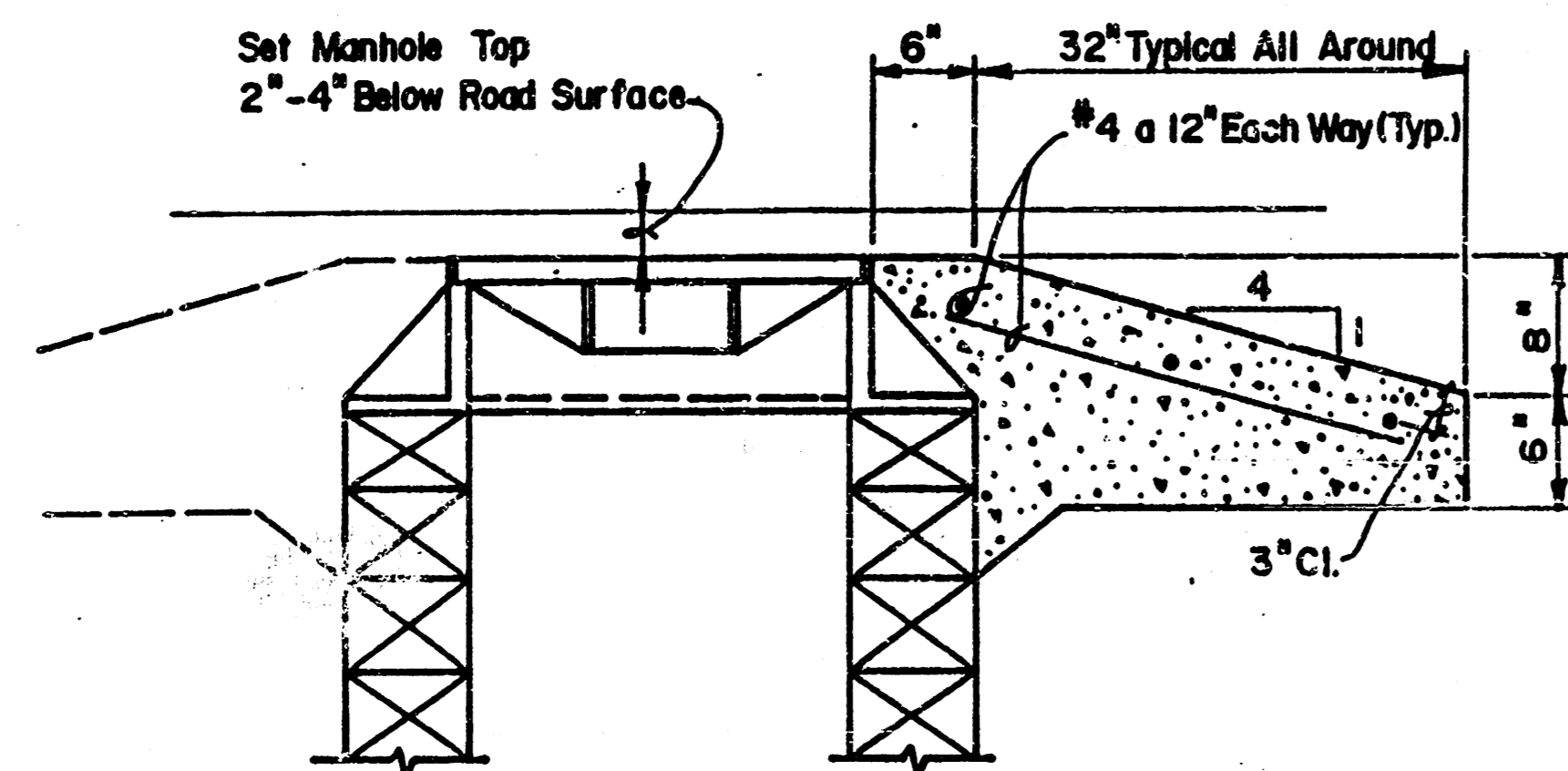
Detail Of Reinforced Concrete Encasement



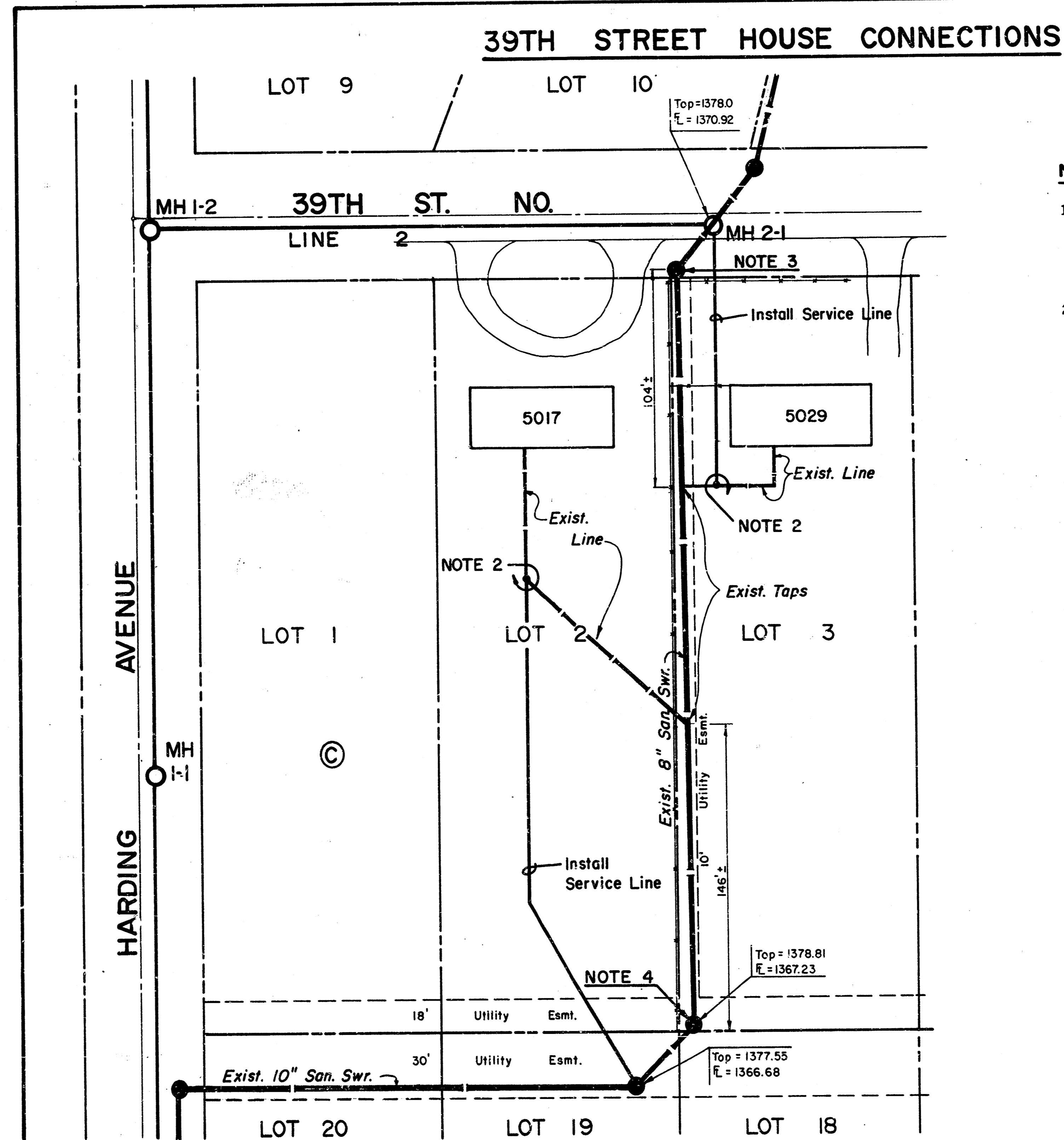
Detail Of Reinforced Concrete Cradle



STEEL ENCASEMENT DETAIL



CONCRETE COLLAR FOR MANHOLE COVER (When Located in Graveled Surfacing)



NOTES:

- COORDINATE CONSTRUCTION WORK, PIPE ALIGNMENT, AND SCHEDULE WITH RESPECTIVE PROPERTY OWNER:
5017 E. 39TH STREET NORTH - RICHARD LOWEN, 744-0050
5029 E. 39TH STREET NORTH - JOSEPH PINCKARD, 744-0091
- RECONNECT EXISTING 4" SERVICE LINES WITH SCHEDULE 40 OR SDR35 PVC PIPE, 4" DIAMETER AT 1/4"/FT. MINIMUM OR 6" DIAMETER AT 1/8"/FT. MINIMUM. FITTINGS, CLEANOUTS, CONNECTIONS SHALL BE IN ACCORDANCE WITH CITY OF WICHITA REQUIREMENTS. PROPERTY IMPROVEMENTS, LANDSCAPING, FENCES, ETC. ARE NOT SHOWN. THE CONTRACTOR SHALL VERIFY SITE CONDITIONS AND COORDINATE ANY SPECIAL CONSTRUCTION REQUIREMENTS WITH THE PROPERTY OWNERS. LOCATIONS OF SERVICE LINES AS SHOWN ARE APPROXIMATE; THE CONTRACTOR SHALL BE RESPONSIBLE TO VERIFY THE EXACT LOCATION AND DEPTH OF CONNECTION POINTS. NOTIFY ENGINEER IF CONDITIONS ARE NOT AS SHOWN. THE PROPOSED ALIGNMENTS AND CONNECTIONS SHALL BE APPROVED BY THE ENGINEER.
- AFTER LINE 2 HAS BEEN ACCEPTED BY THE CITY OF BEL AIR, ABANDON MANHOLE AND PLUG PIPE ENDS IN ACCORDANCE WITH SPECIFICATIONS.
- AFTER LINE 2 HAS BEEN ACCEPTED BY THE CITY OF BEL AIR, PLUG END OF ABANDONED PIPE IN ACCORDANCE WITH SPECIFICATIONS.



Scale 1" = 40'

	DETAILS		Design
			Drawn by
			Checked by
			Date
		Job no.	
MID-KANSAS ENGINEERING CONSULTANTS PA 3500 NORTH ROCK ROAD BUILDING #800 WICHITA, KANSAS 67226			Sheet 10 of 10

636-5566