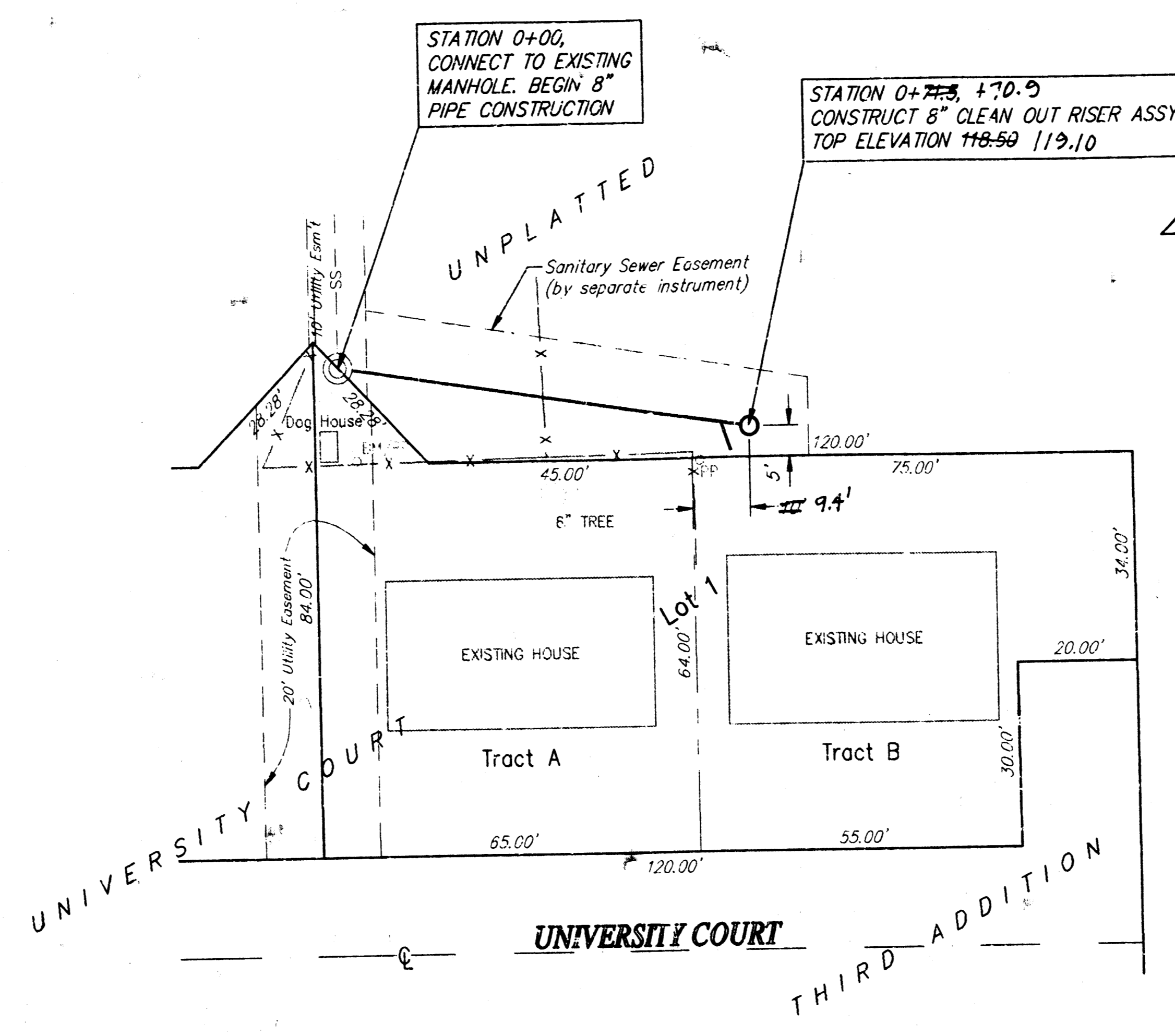
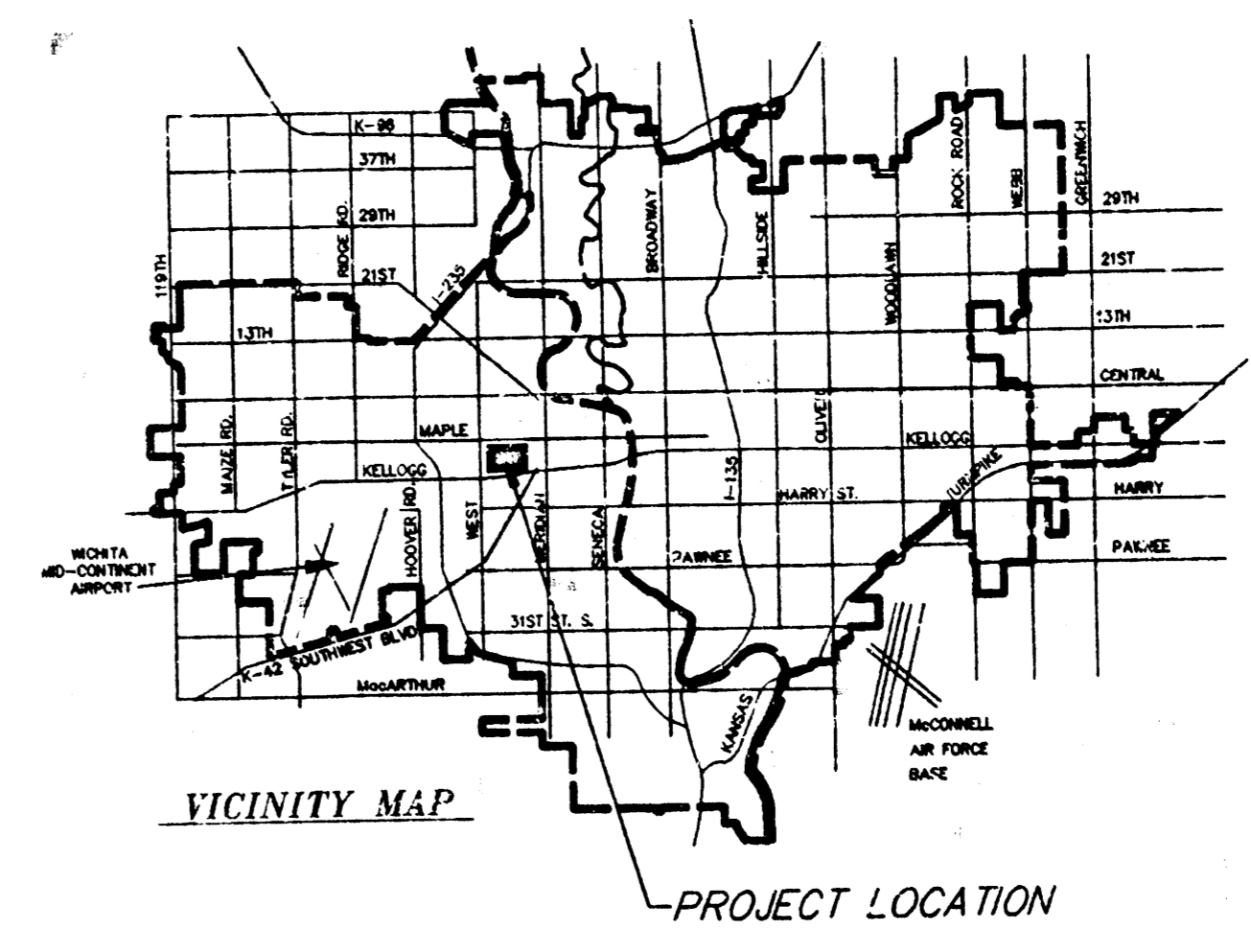


8" CLEANOUT RISER ASSEMBLY



SRB
SCALE:
1"=20' PLAN
1"=5' PROFILE

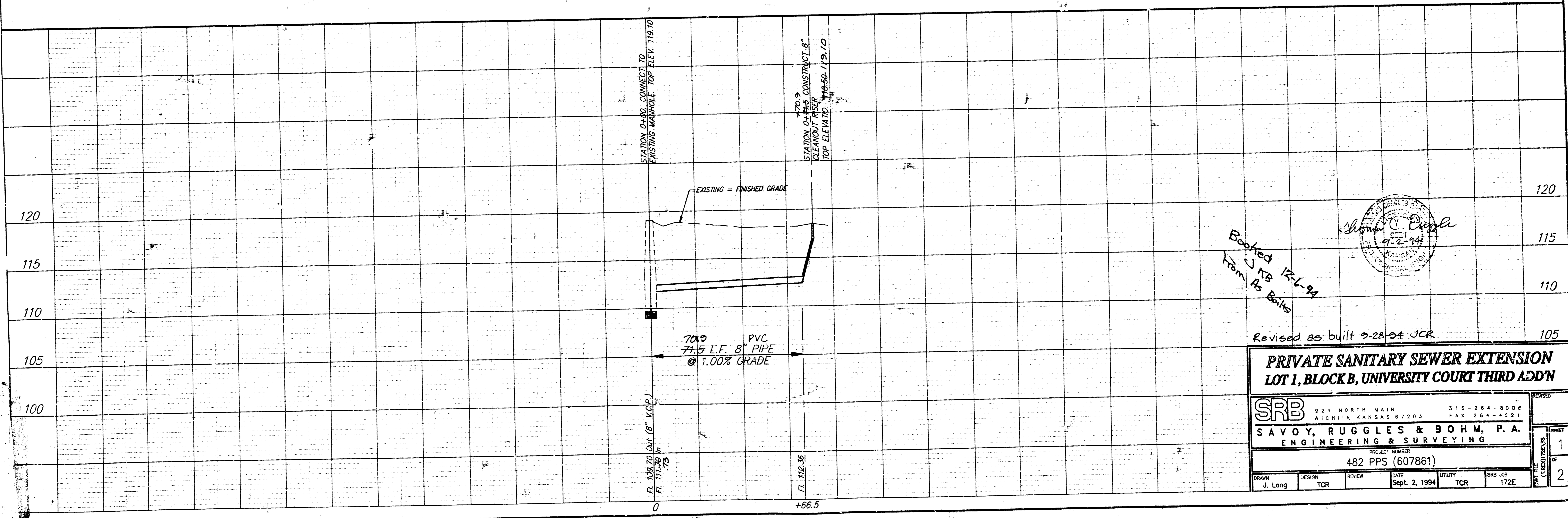


BENCH MARK:
BRIDGE SPIKE IN WEST FACE OF POWER POLE
2.5' NORTH & 15.8' EAST OF STA. 0+00
ELEVATION 119.50 CITY DATUM

APPROVED AS NOTED
BY CITY ENGINEER OF WICHITA

Sanitary Sewers 9/2/94 VJR/H
Storm Sewers _____
Driveway Approaches _____
Water Mains _____
Paving _____

NOTE TO CONTRACTORS
Inspection and testing for this project are to be provided by a Licensed Consulting Engineering Firm under contract with the Owner/Developer. Said inspection to be in accordance with the City of Wichita standard construction engineering practices and certified by a Licensed Professional Engineer. No work shall be performed in dedicated easements or public right-of-way by the Contractor without such inspection, nor shall any work be commenced without written authorization by the City Engineer.



Boothed 12-6-94
From As Bldg

Revised as built 9-28-94 JCR

**PRIVATE SANITARY SEWER EXTENSION
LOT 1, BLOCK B, UNIVERSITY COURT THIRD ADD'N**

SRB 924 NORTH MAIN 316-264-8008
WICHITA, KANSAS 67203 FAX 264-1521

SAVOY, RUGGLES & BOHM, P.A.
ENGINEERING & SURVEYING

PROJECT NUMBER
482 PPS (607861)

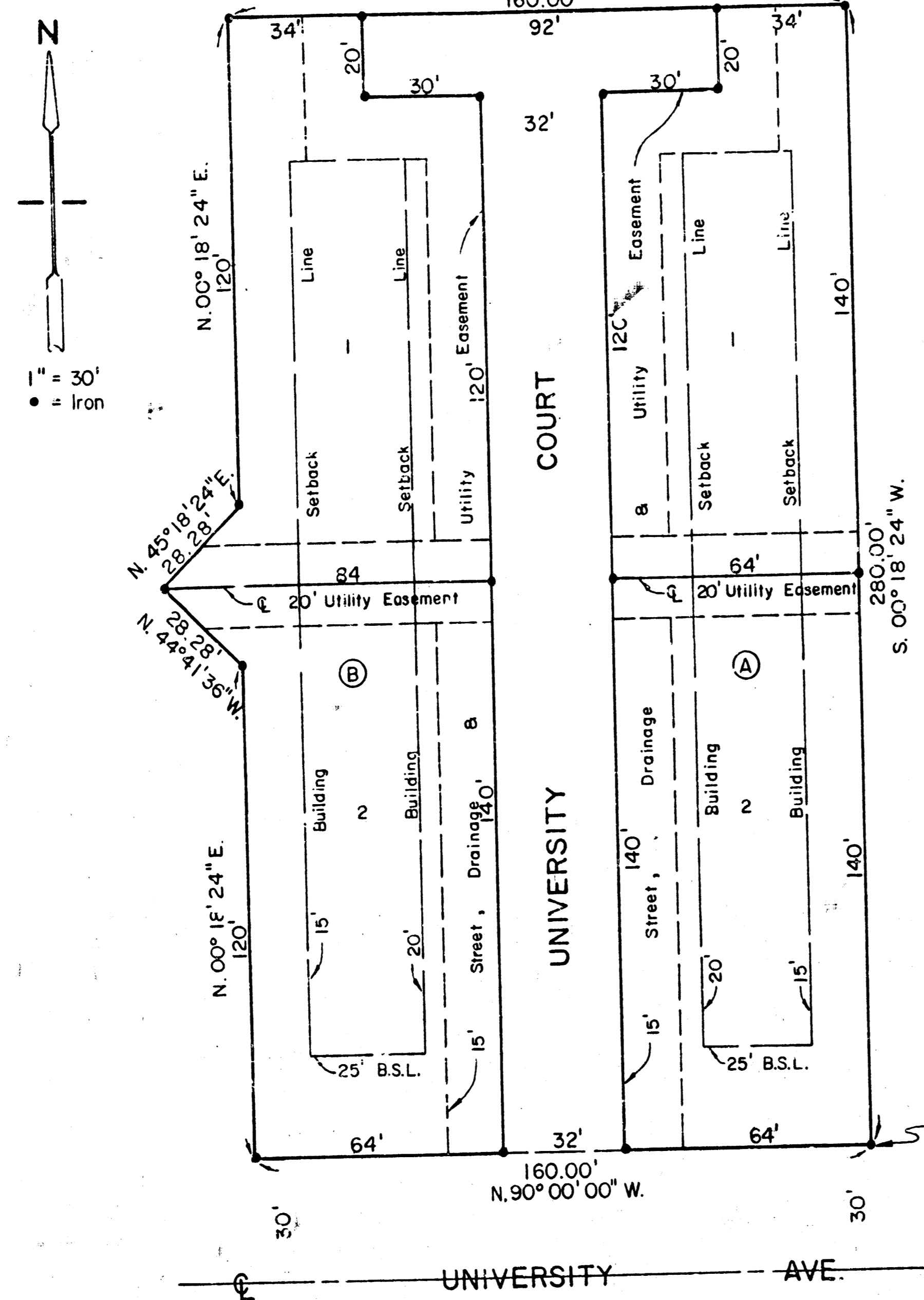
DRAWN	DESIGN	REVIEW	DATE	UTILITY	SRB JOB
J. Long	TCR		Sept. 2, 1994	TCR	172E

REVISED
1
OF
2

868 D 3-35

UNIVERSITY COURT THIRD ADDITION

Wichita, Sedgwick Co., Ks.



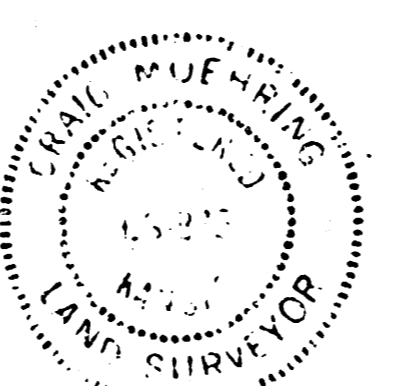
1" = 30'
• = Iron

1000.97' West of S.E. Cor. N 1/2, NE 1/4, NW 1/4 Sec. 25, T. 27S, R. 1W.

STATE OF KANSAS, COUNTY OF SEDGWICK, SS:

I, Craig Moehring, a Registered Land Surveyor in said State and County, do hereby certify that I have surveyed and platted "UNIVERSITY COURT THIRD ADDITION", Wichita, Sedgwick County, Kansas, into Lots, Blocks, and a Street, the same being accurately set forth on the accompanying plat and described as being a Replat of Lots 3, 4 and the West 40.0' of Lot 5 in Anderson Investment Third Addition to Wichita, Sedgwick County, Kansas, and also a tract of land in the North 1/2 of the NE 1/4 of the NW 1/4 of Sec. 25, T27S, R1W of the 6th P.M., Sedgwick County, Kansas, described as beginning at a point in the North line and 40.0' East of the Northwest Corner of Lot 5, Anderson Investment Third Addition to Wichita, Sedgwick County, Kansas; thence North parallel with the East line of the NE 1/4 of said NW 1/4, a distance of 140.0'; thence West parallel with the South line of the NE 1/4 of said NW 1/4, a distance of 160.0'; thence South parallel with the East line of the NE 1/4 of said NW 1/4, a distance of 120.0'; thence Southwesterly at an included angle of 135°, a distance of 28.28' more or less to the Northwest corner of Lot 3 in said Anderson Investment Third Addition; thence East along the North line of said Addition, a distance of 180.0' to the point of beginning.

Craig Moehring
Surveyor



Know all men by these presents that we the undersigned, property owners of the land as above set forth in the Surveyor's Certificate, have caused the same to be surveyed and platted into Lots, Blocks, and a Street, to be known as "UNIVERSITY COURT THIRD ADDITION", Wichita, Sedgwick County, Kansas. Easements for the construction and maintenance of public utilities, as indicated on the accompanying plat, are hereby granted. The Street is hereby dedicated to and for the use of the public.

Larry D. Coleman Patricia L. Coleman
 Clement A. Rasmussen Judith Dee Rasmussen

STATE OF KANSAS, COUNTY OF SEDGWICK, SS:
 Be it remembered this 19 day of Dec, 1987, before me, a Notary Public in and for said State and County, came Larry D. Coleman, Patricia L. Coleman, Clement A. Rasmussen, and Judith Dee Rasmussen, to me personally known to be the same persons who executed the foregoing instrument of writing and duly acknowledged the execution of the same. In testimony whereof I have hereunto set my hand and affixed my notarial seal the day and year above written.

Kandis A. Page
 Notary Public
 My commission expires 8-22-89

This plat of "UNIVERSITY COURT THIRD ADDITION" has been submitted to and approved by the Wichita-Sedgwick County Metropolitan Area Planning Commission.
 Dated this 15th day of October, 1987.
 WICHITA-SEDGWICK COUNTY METROPOLITAN AREA PLANNING COMMISSION
 EMMY PARSONS, Chairman
 Marvin S. Krout, Secretary

This plat has been approved and all dedications shown hereon, if any, accepted by the City Council of the City of Wichita, Kansas, this day of _____, 1987.
 Robert G. Knight, Mayor
 Dale E. Rea, Deputy City Clerk

STATE OF KANSAS, COUNTY OF SEDGWICK, SS:
 This is to certify that this instrument was filed for record in the Register of Deeds Office at 10:30 A.M. on the 17th day of JANUARY, 1988.
 Pat Kettler, Register of Deeds
 Ed Resa, Deputy
 Entered on transfer record this 7th day of JANUARY, 1988.
 Ronald G. Miller, County Clerk
 Don Wright, Chief Deputy

926114

D 3-35

868

SHT 2/2
482 PPS (607861)