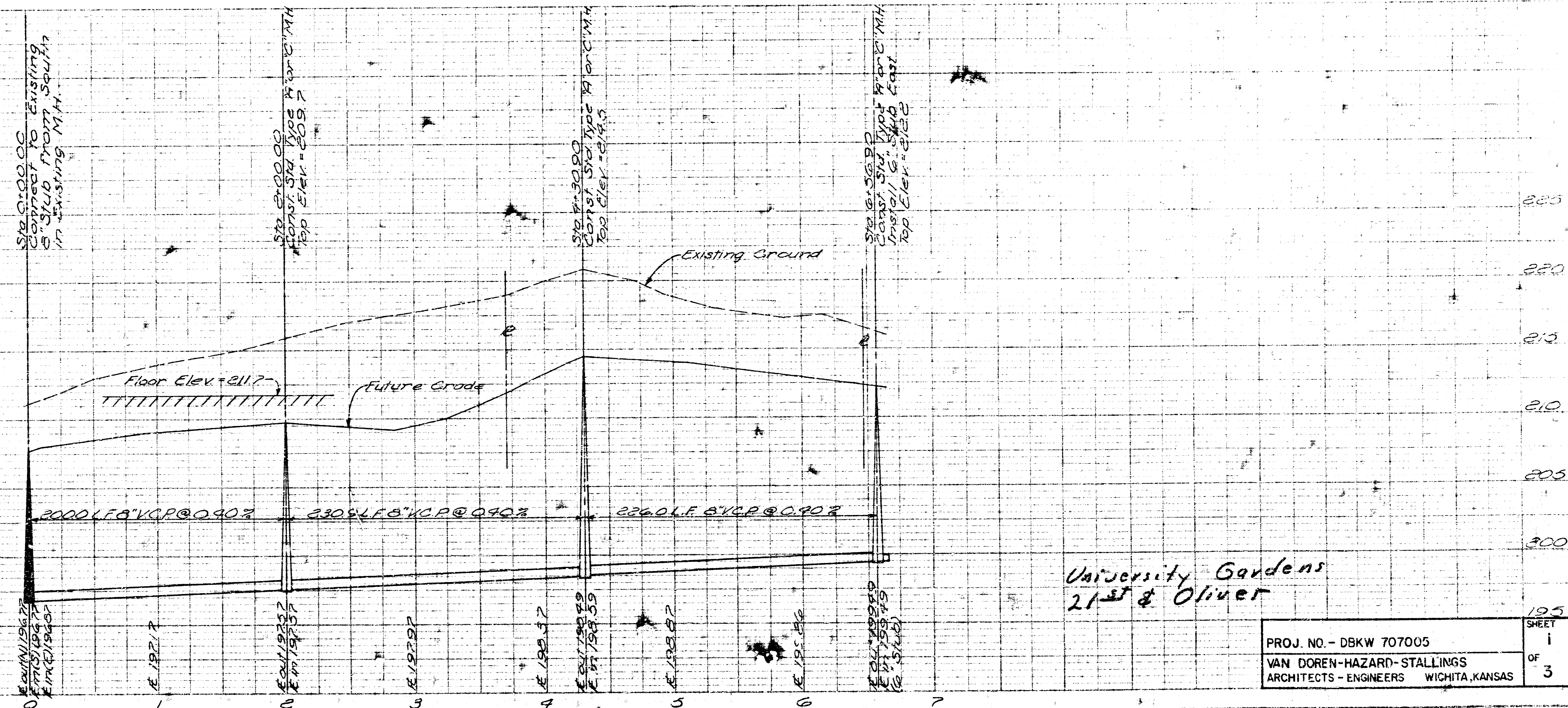


1-25-77
APPROVED AS NOTED
 By CITY ENGINEER OF WICHITA
 Sanitary Sewers D. E. S.
 Storm Sewers _____
 Driveway Approaches _____

NOTE TO CONTRACTOR
 This project will be constructed under the supervision of the City Engineer and conforming to the specifications of the City of Wichita. The City of Wichita will not be responsible for any inspection.

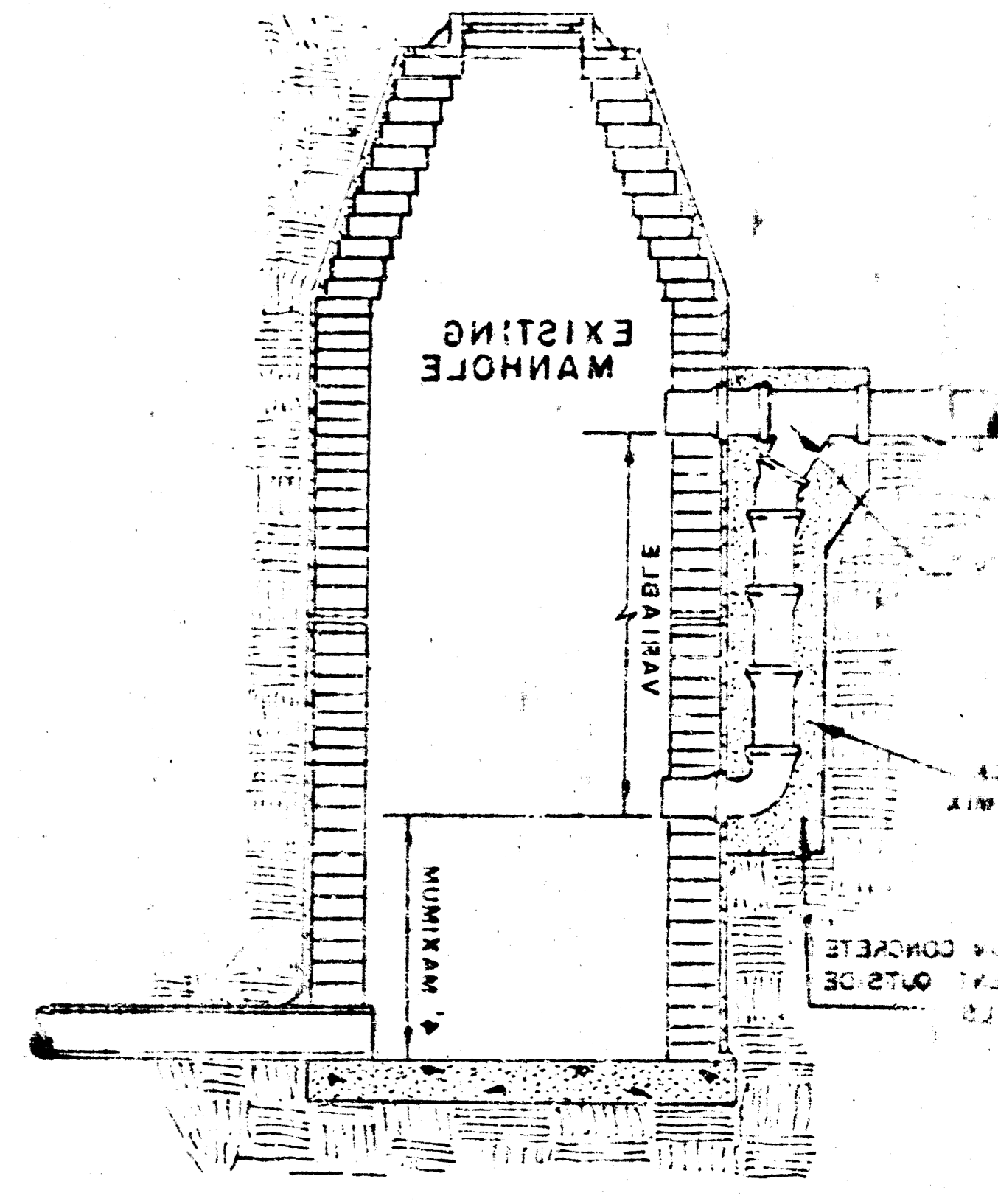


University Gardens
 21st & Oliver

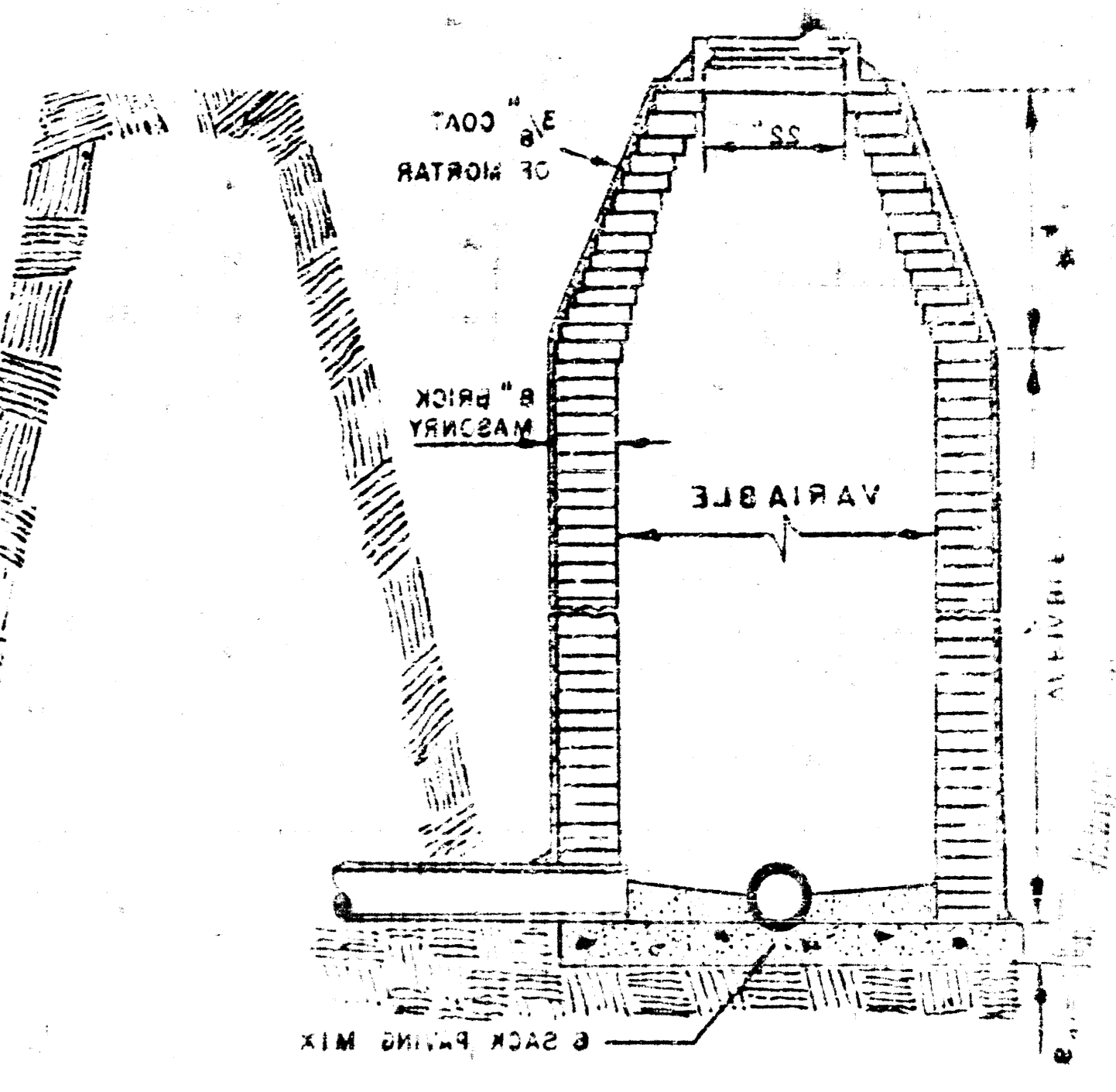
MANHOLES

OTHERWISE SPECIFIED ON PLAN, ALL M.H.'S SHALL BE 2' DIAMETER UNLESS ALL MANHOLES WITH FIRES LARGER PRICE AS OUTSIDE DROP MANHOLES. DROP MANHOLES SHALL BE 2' AT ONE SINGLE OR DOUBLE OUTSIDE MANHOLES, REGARDLESS OF DIAMETER, STANDARD MANHOLES AND DROP CEMENT PER CUBIC YARD. MANHOLES SHALL CONTAIN 8 SACKS OF THE CONCRETE USED FOR MORTAR IN

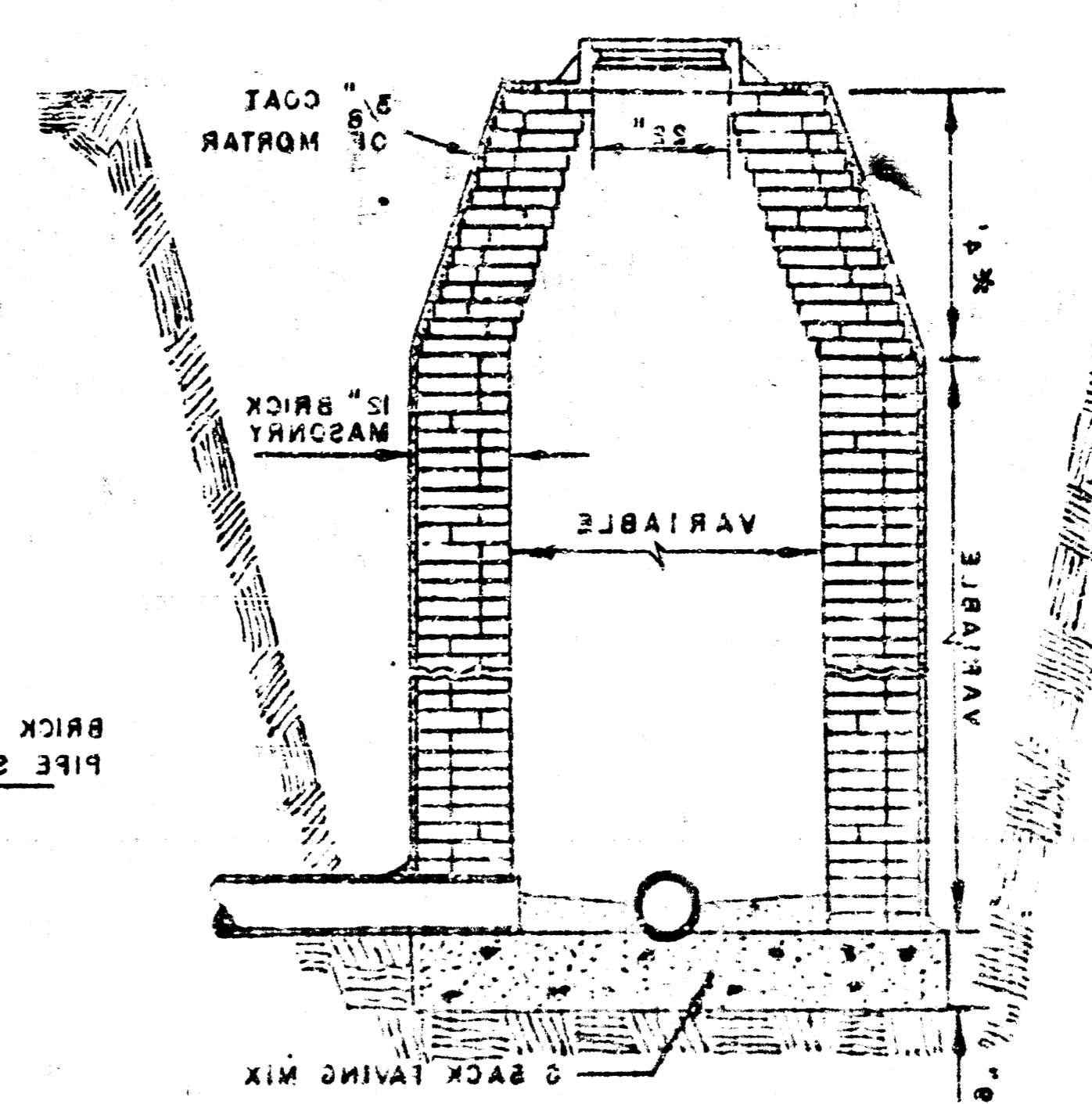
FOR EXISTING MANHOLES IN GROUND WATER



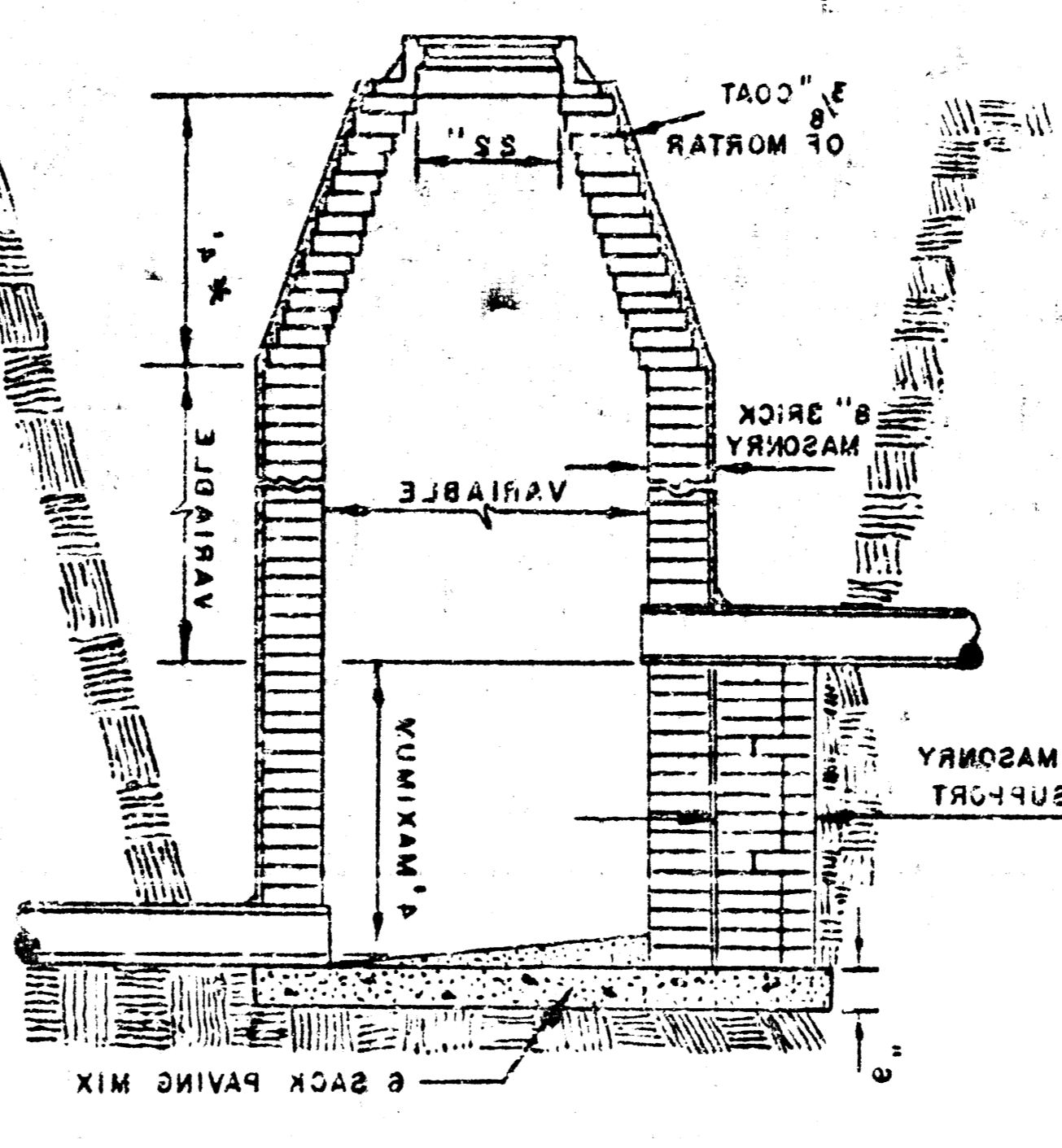
STANDARD MANHOLE TYPE "A"



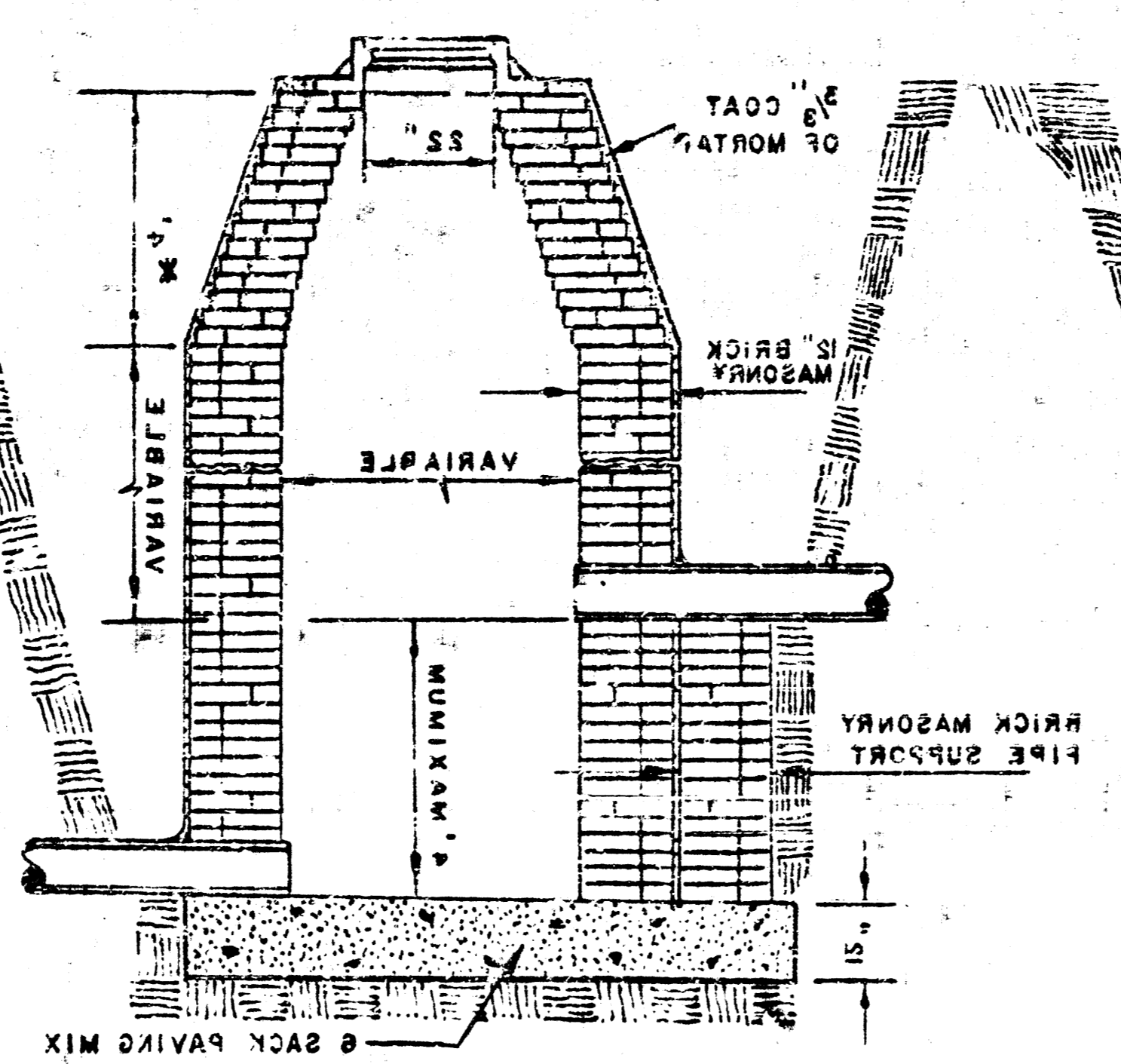
STANDARD MANHOLE TYPE "B"



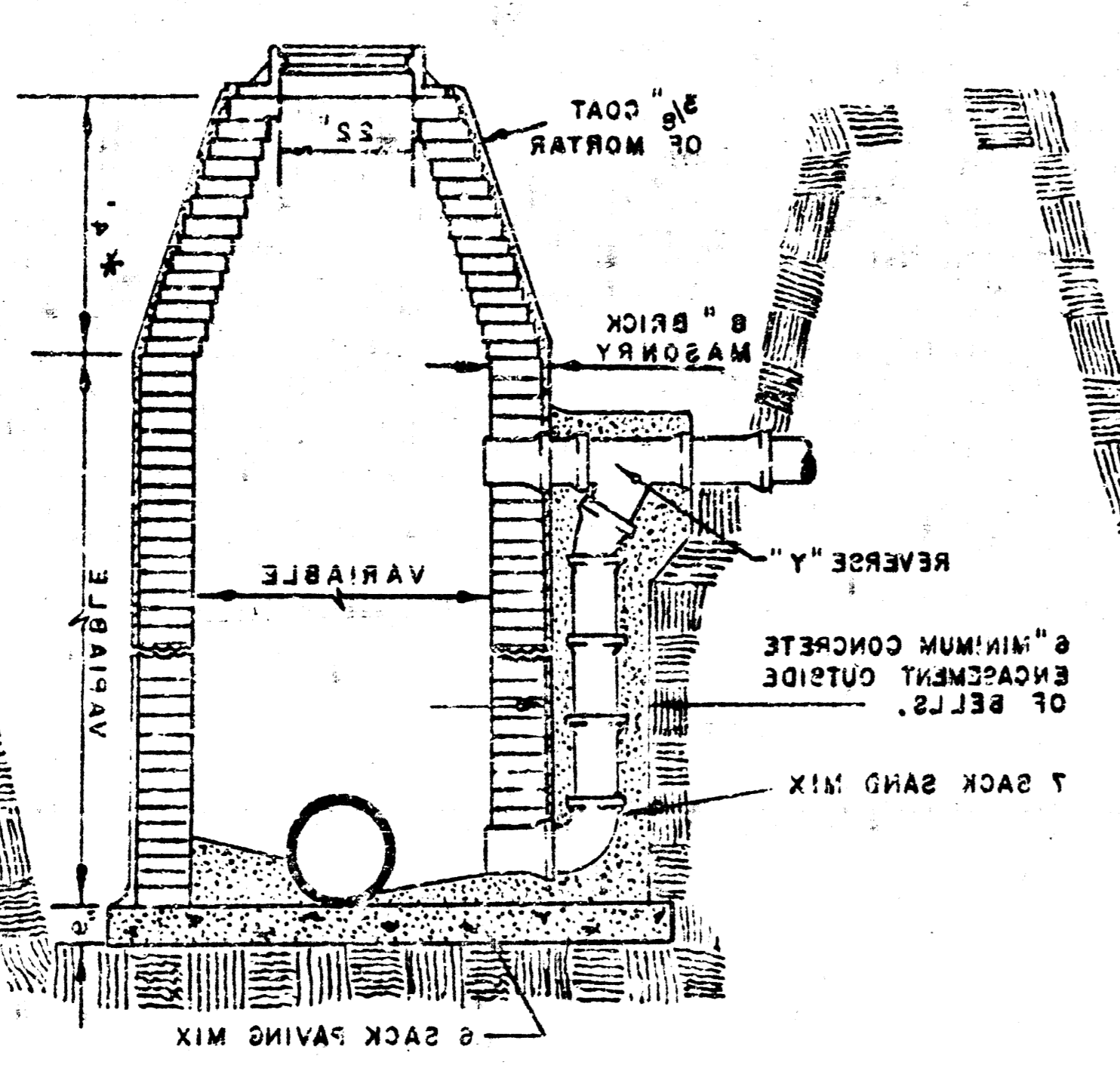
DROP MANHOLE TYPE "A"



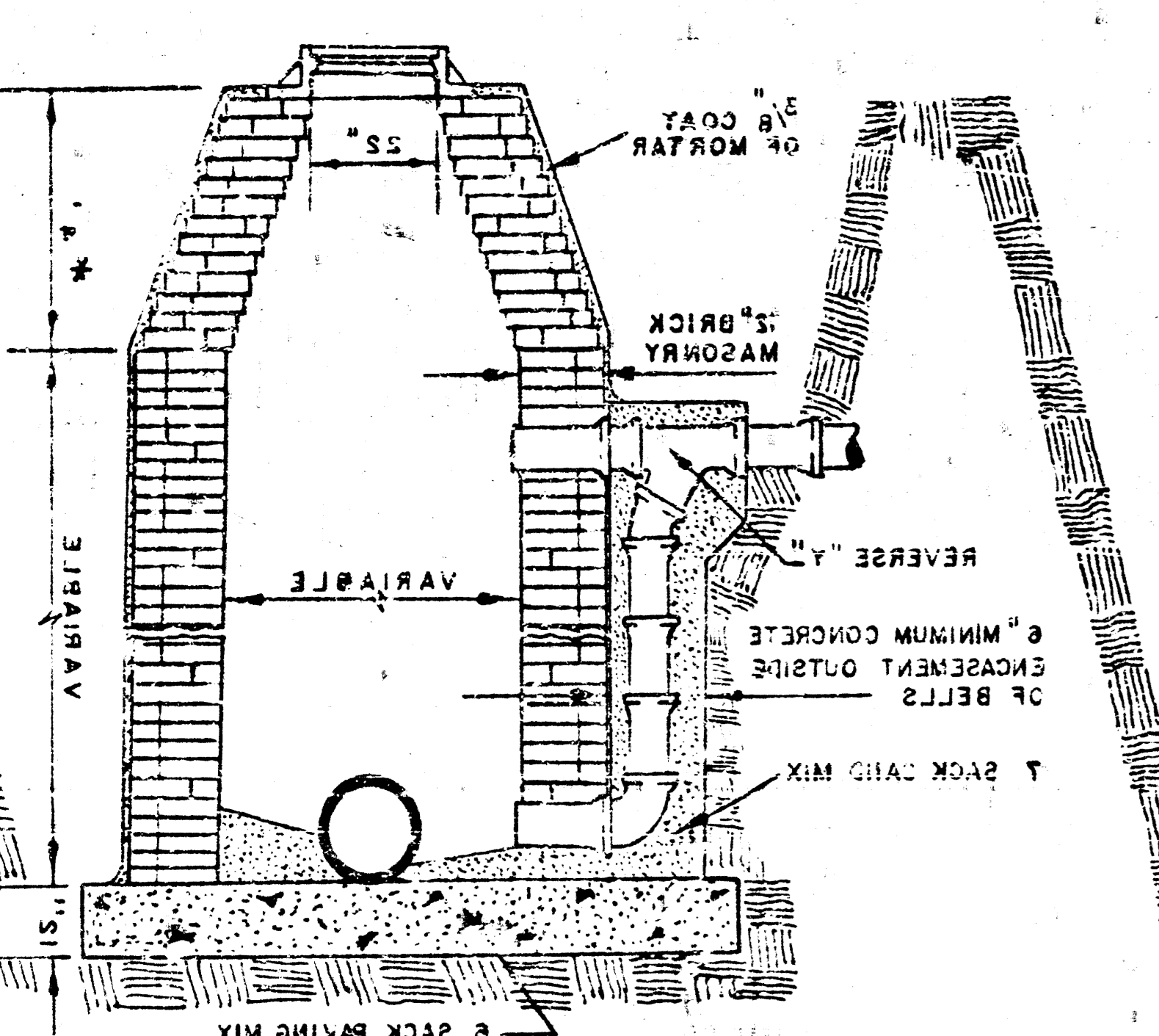
DROP MANHOLE TYPE "B"



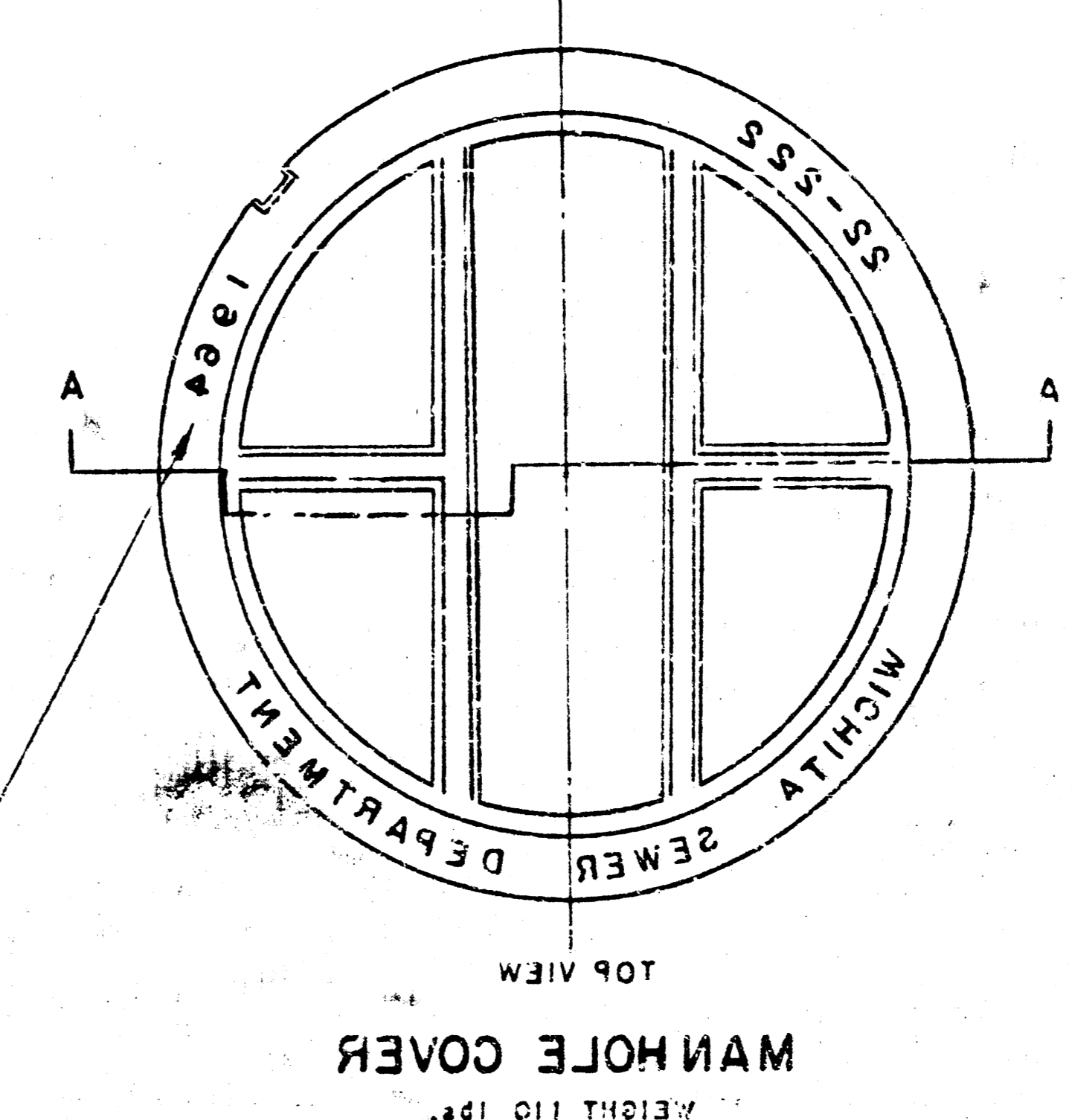
OUTSIDE DROP MANHOLE TYPE "A"



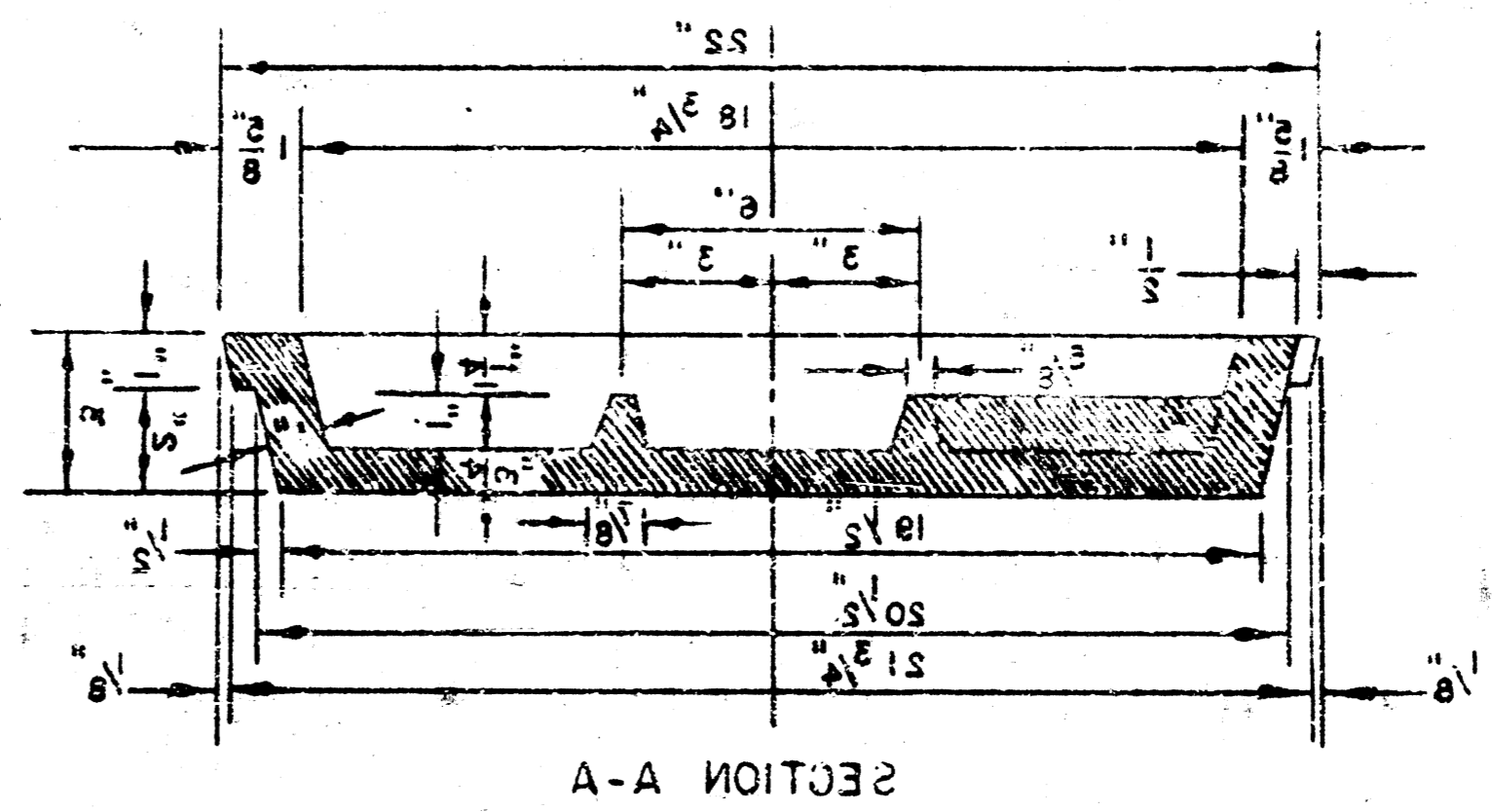
OUTSIDE DROP MANHOLE TYPE "B"



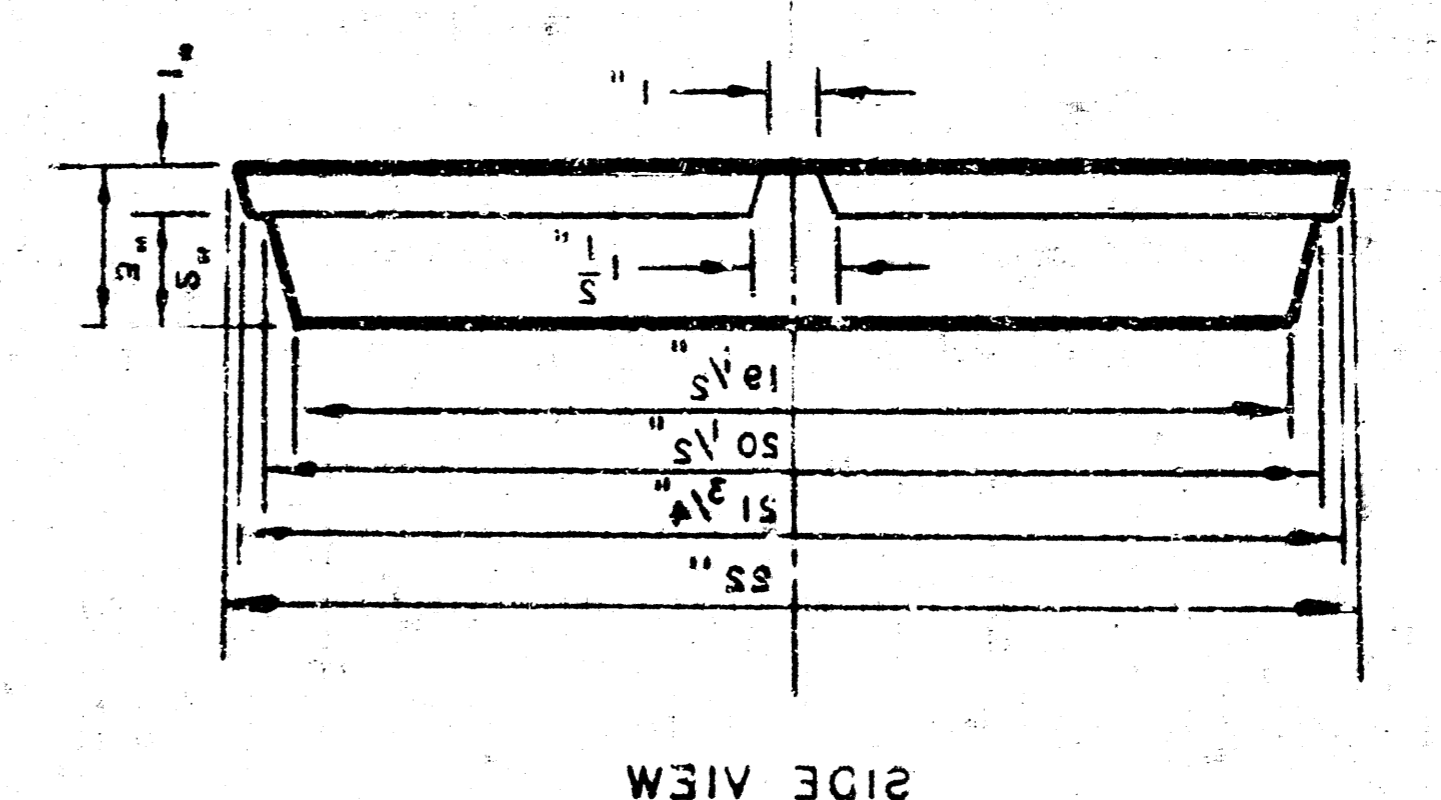
* DRAW "E" ON 2" DIA. M.H.



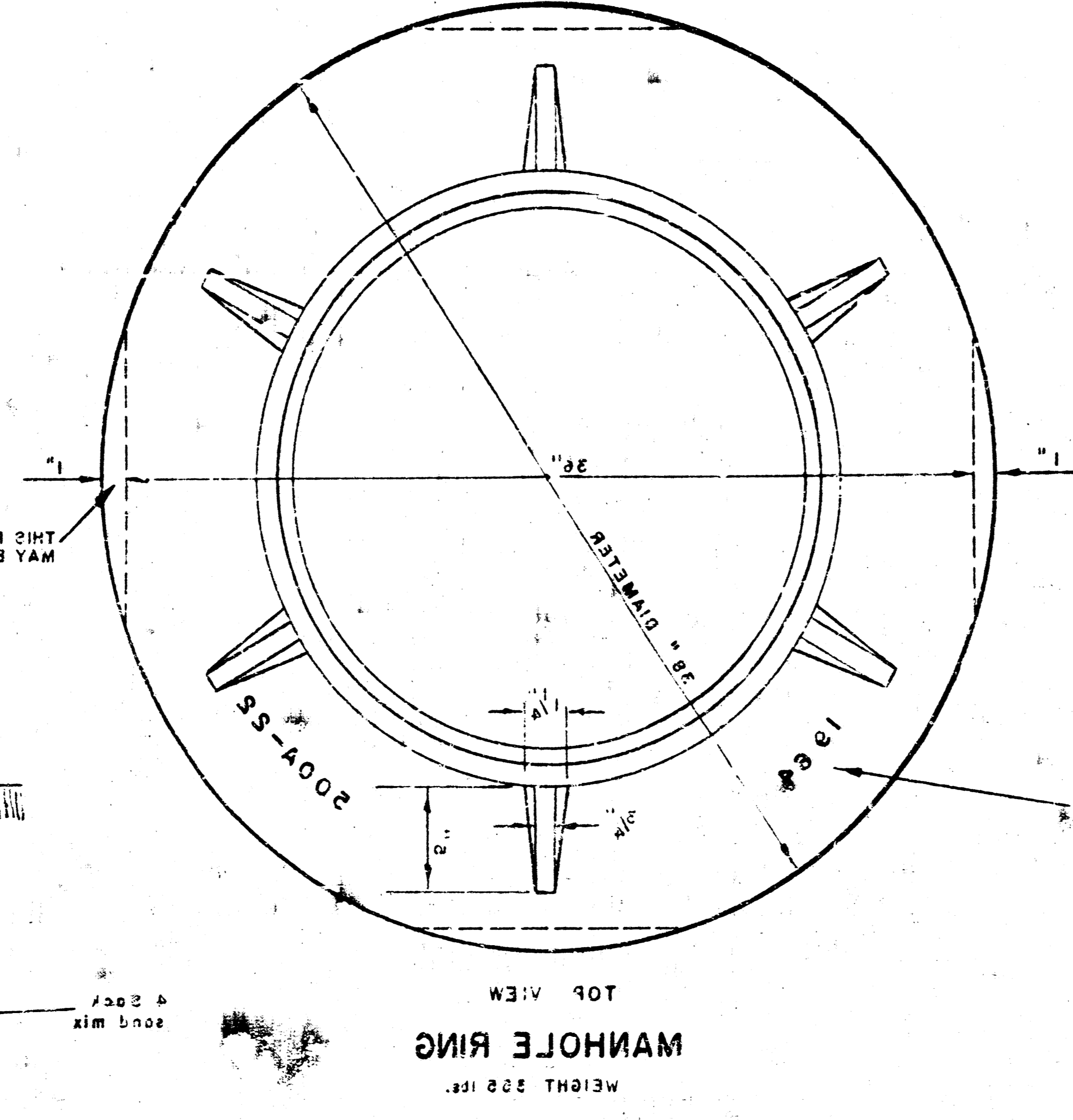
MANHOLE COVER



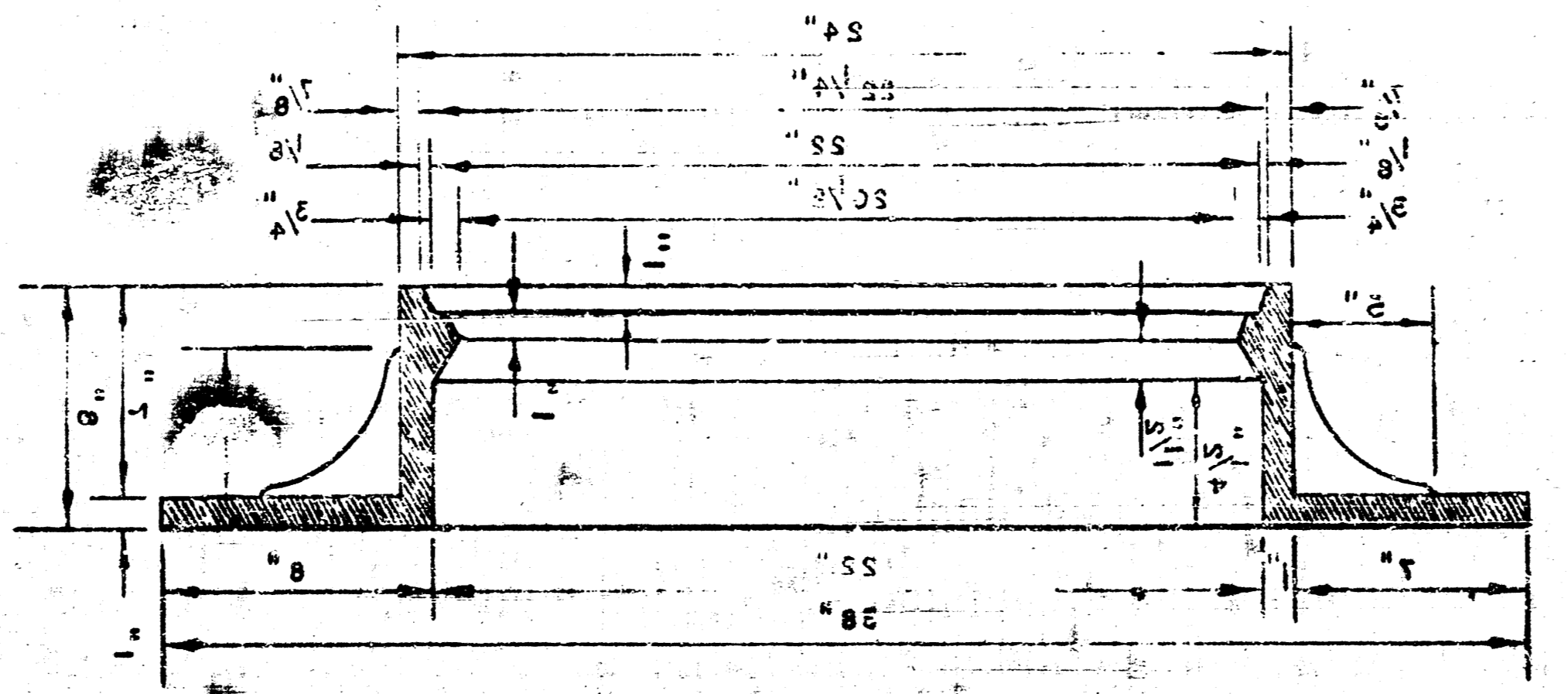
MANHOLE COVER



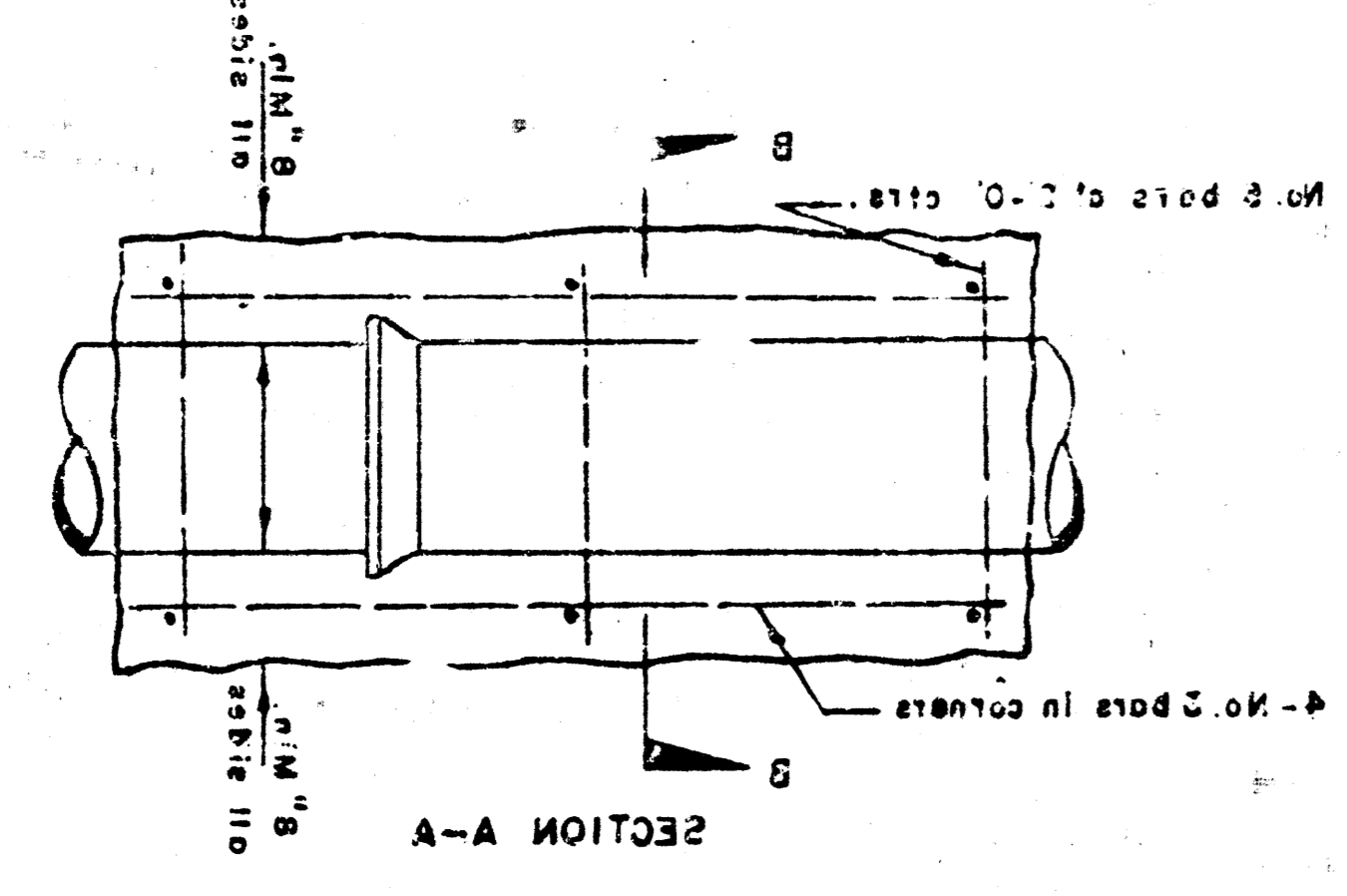
MANHOLE COVER



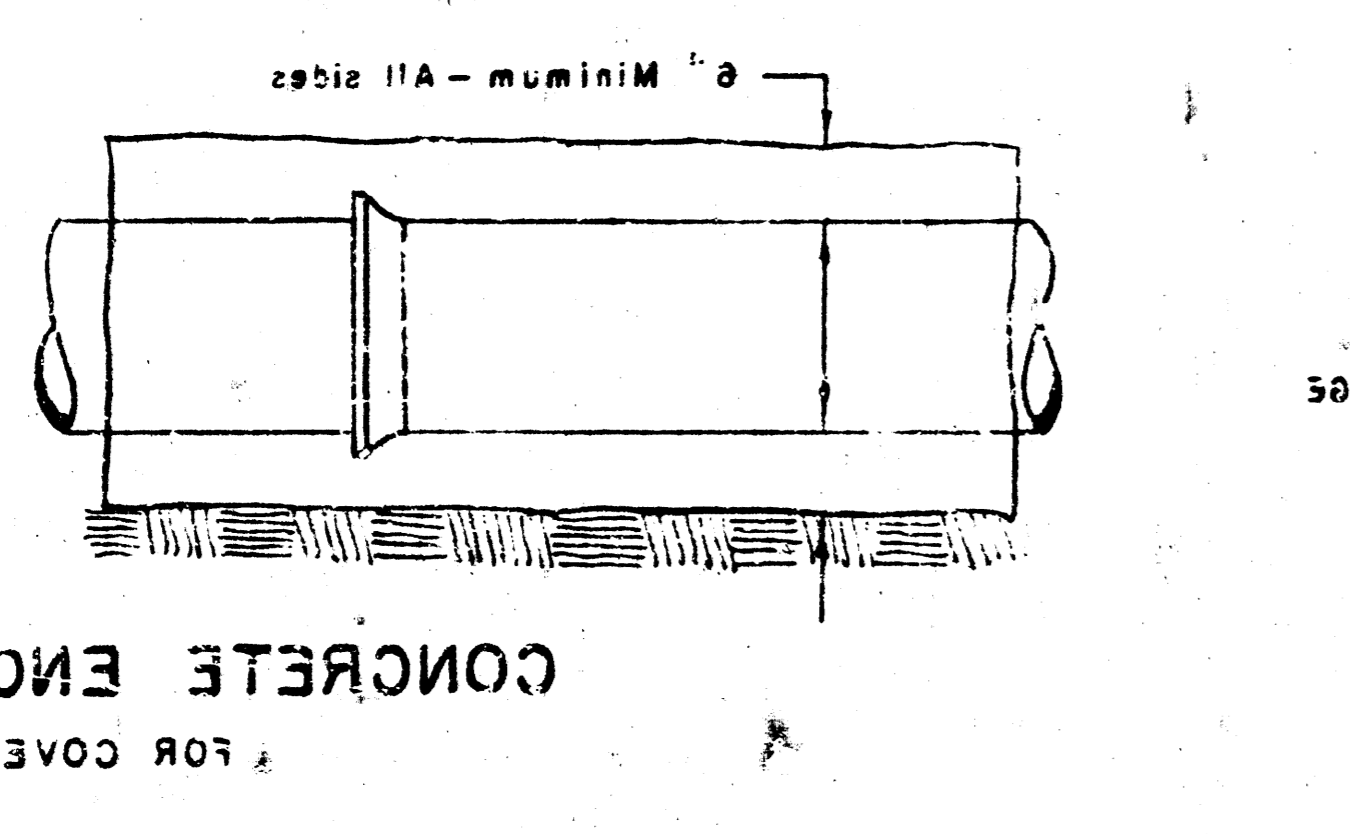
MANHOLE RING



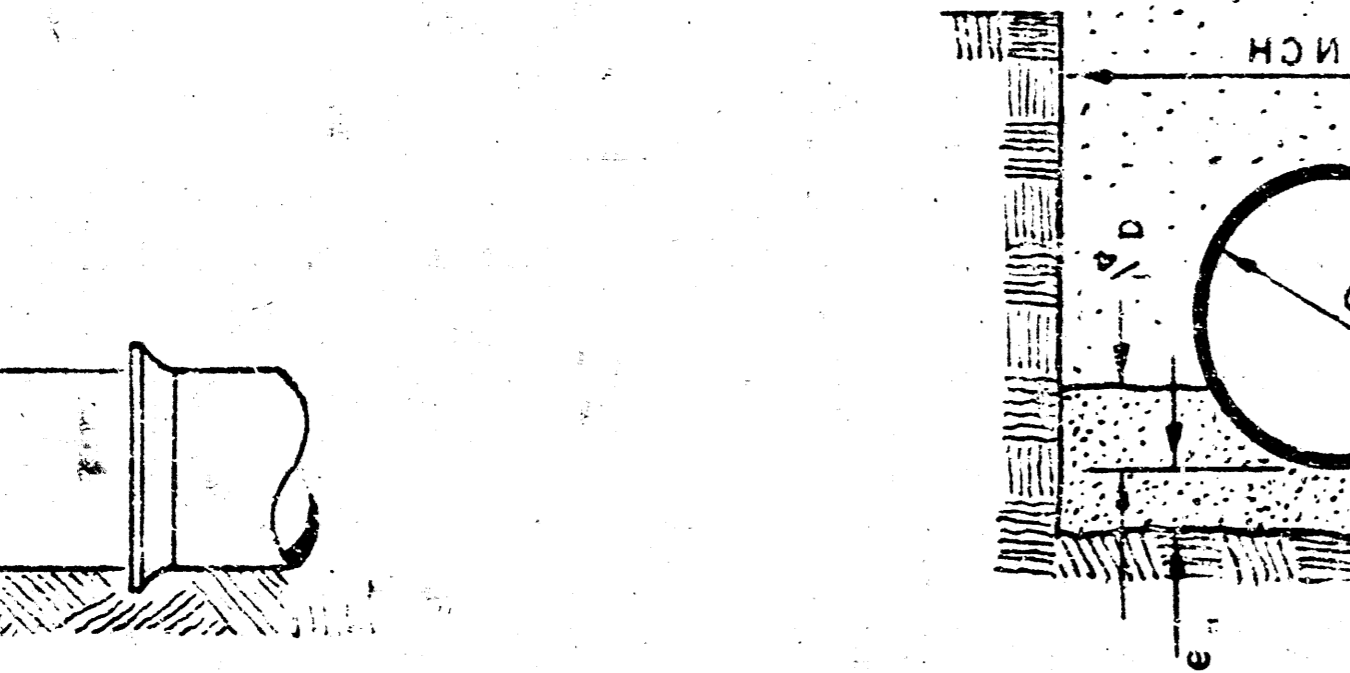
MANHOLE RING



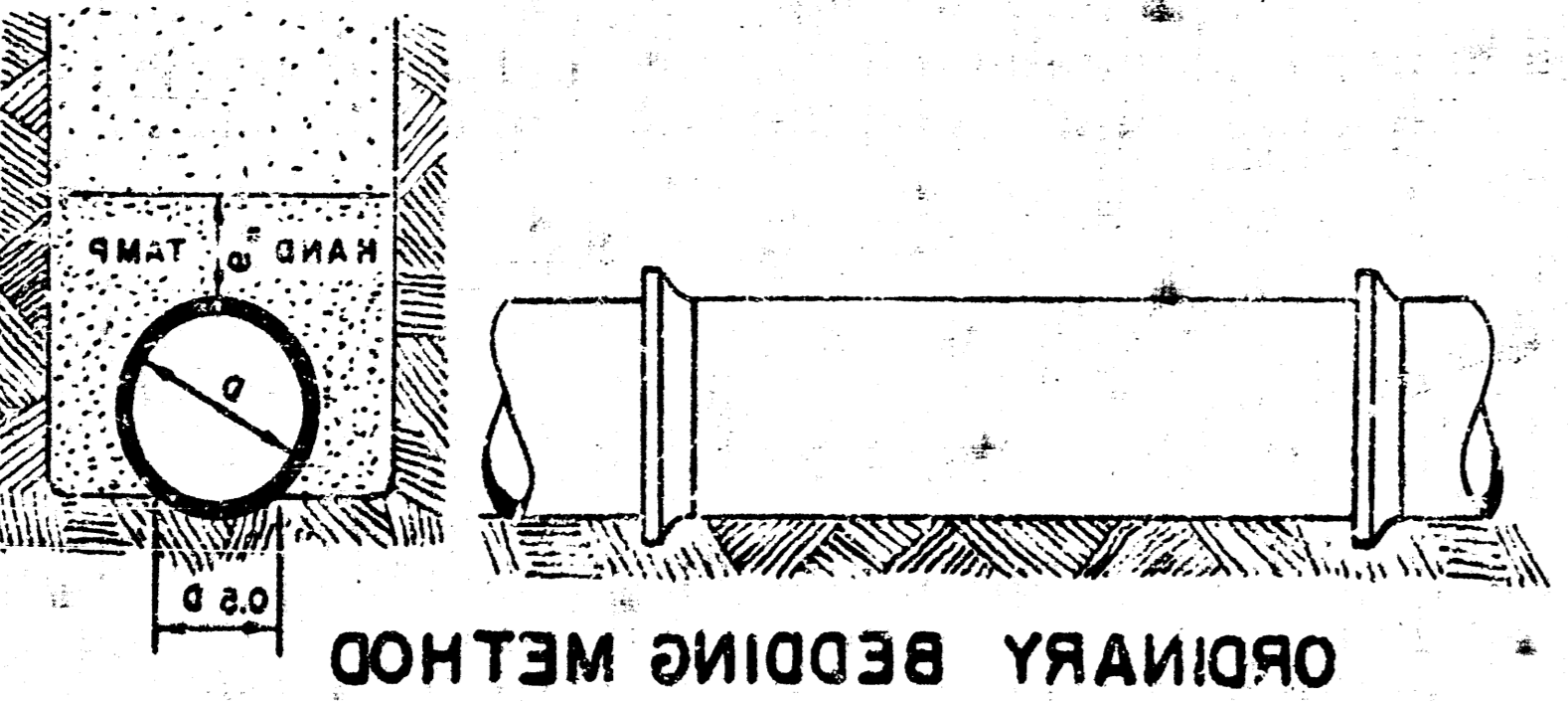
REINFORCED CONCRETE ENCASMENT FOR STRENGTH



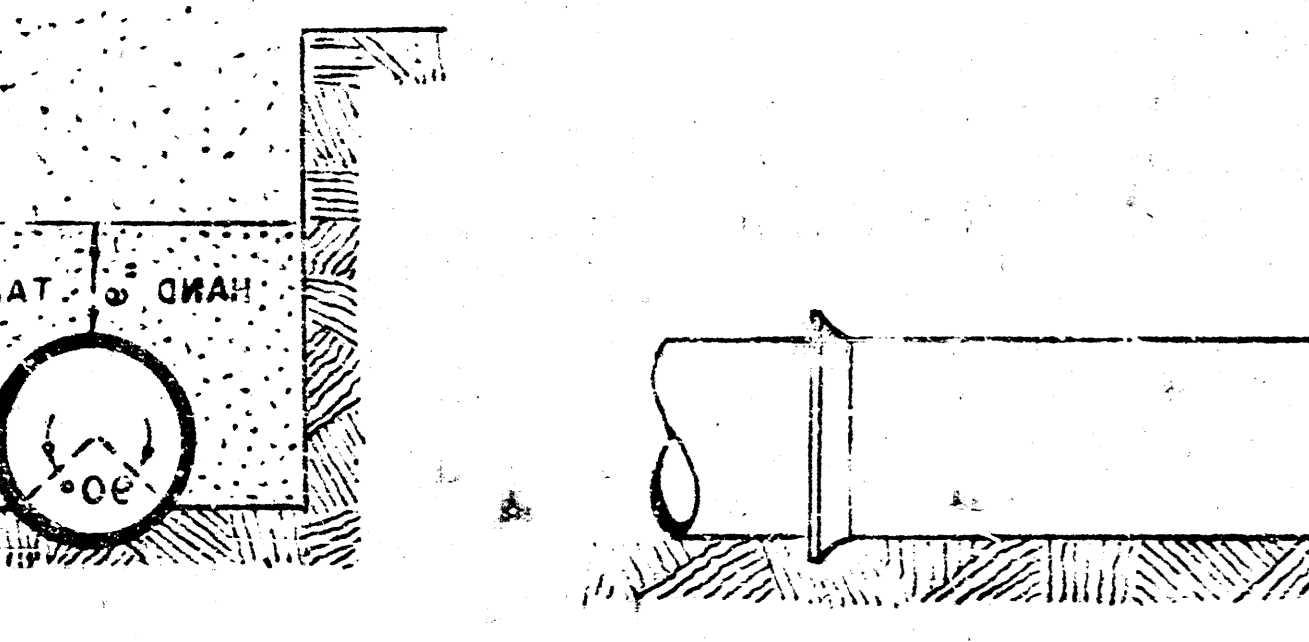
CONCRETE ENCASMENT FOR COVER



CONCRETE ENCASMENT FOR COVER



ORDINARY BEDDING METHOD

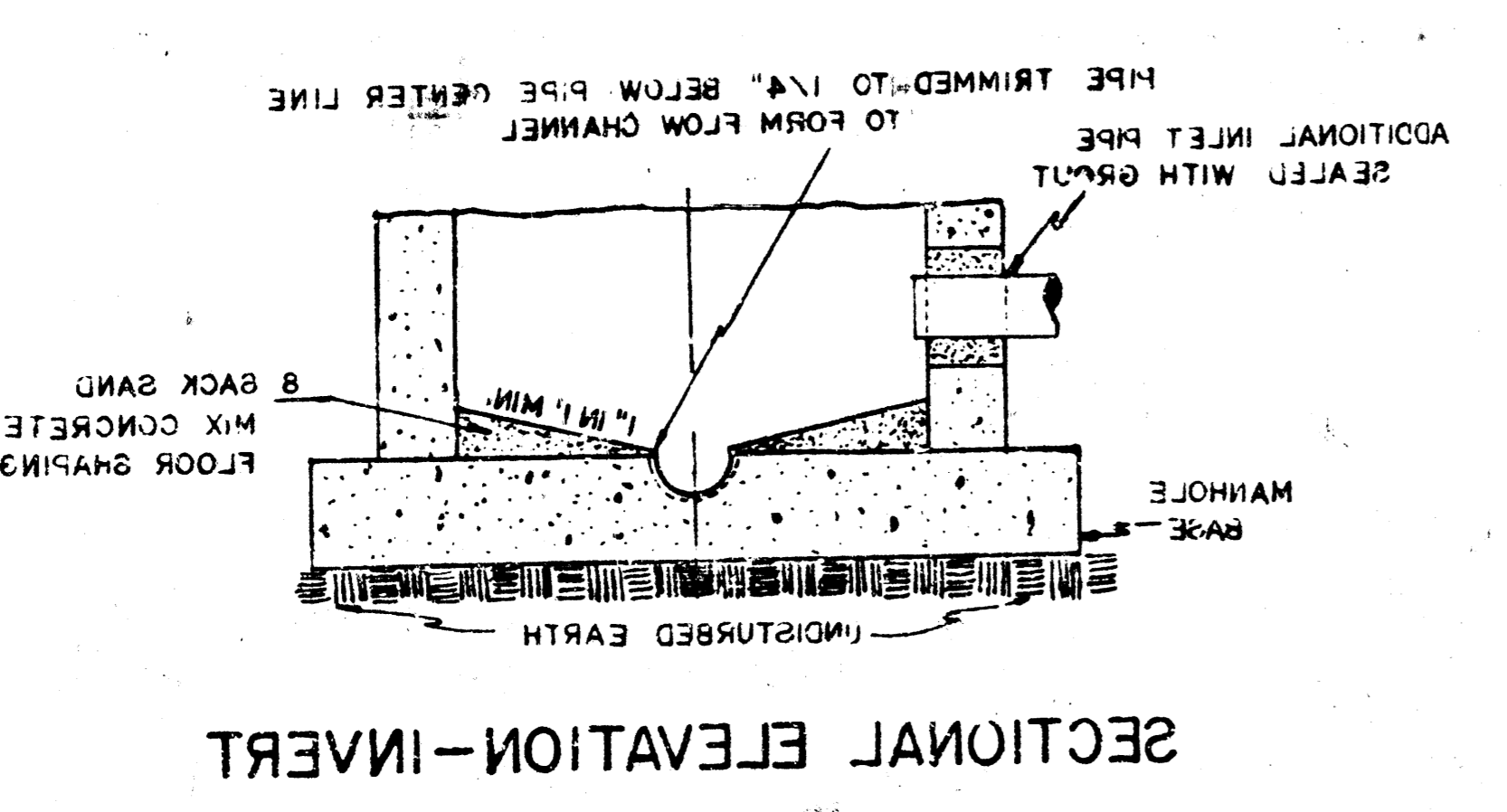
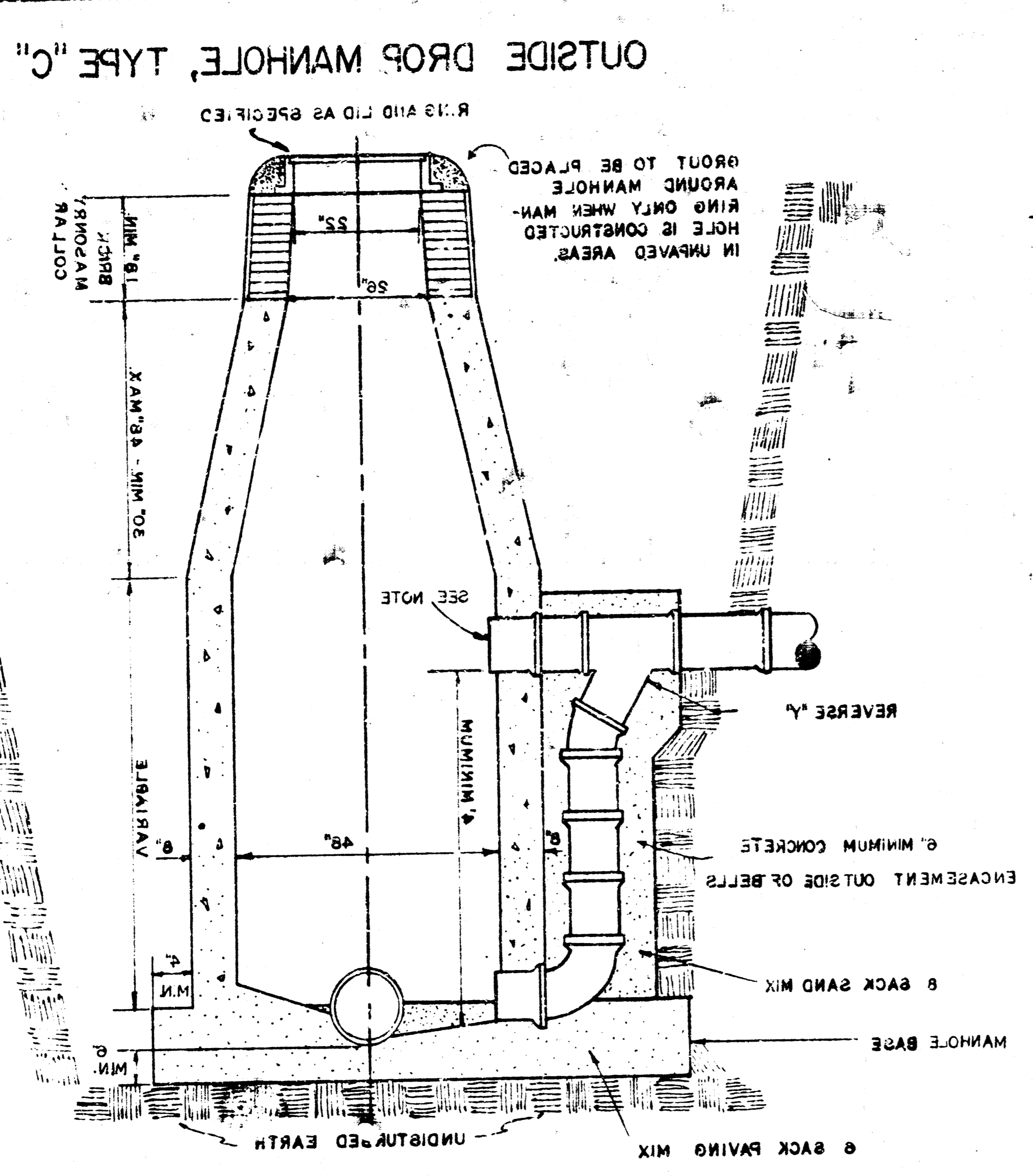


ORDINARY BEDDING METHOD FOR CLAY PIPE

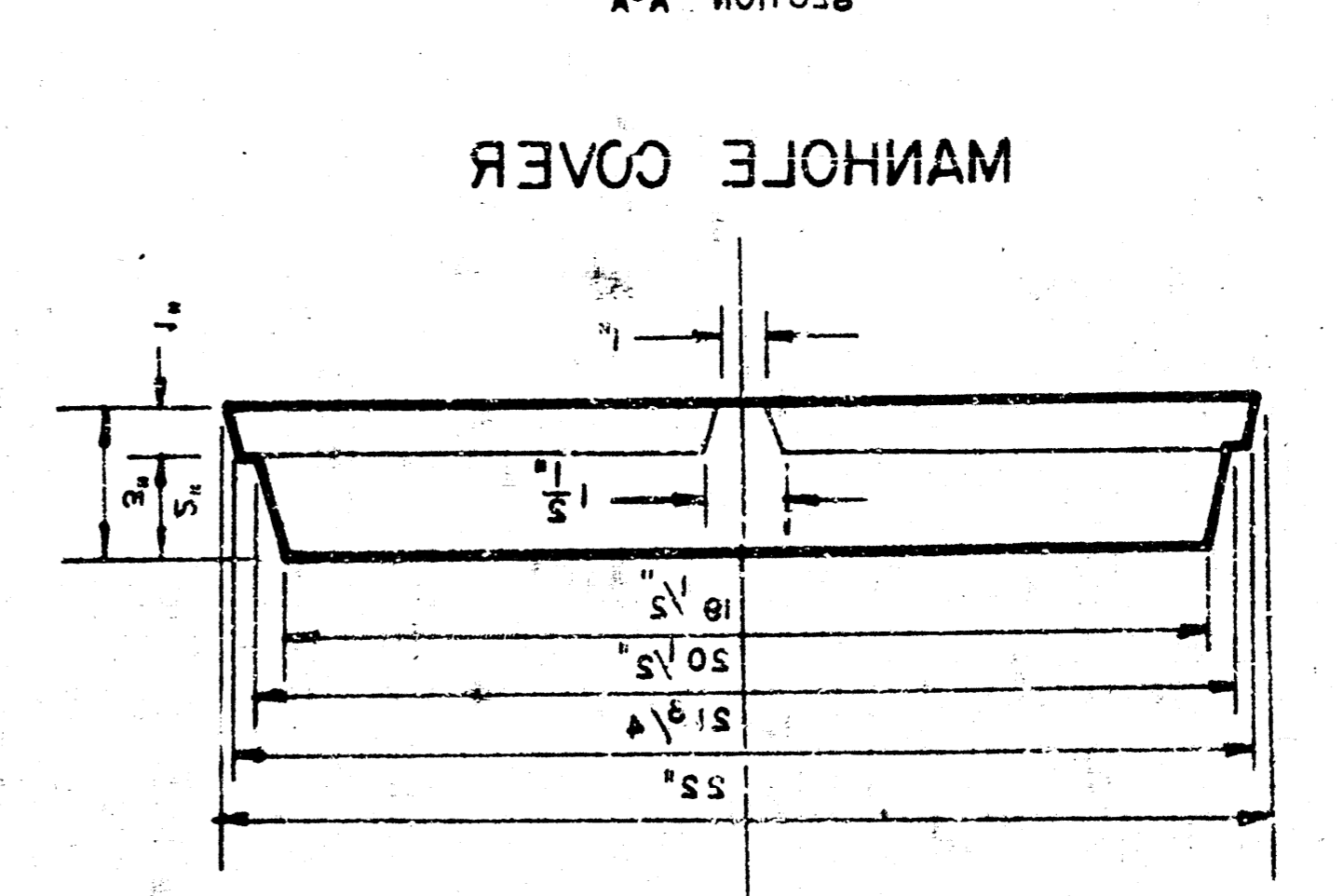
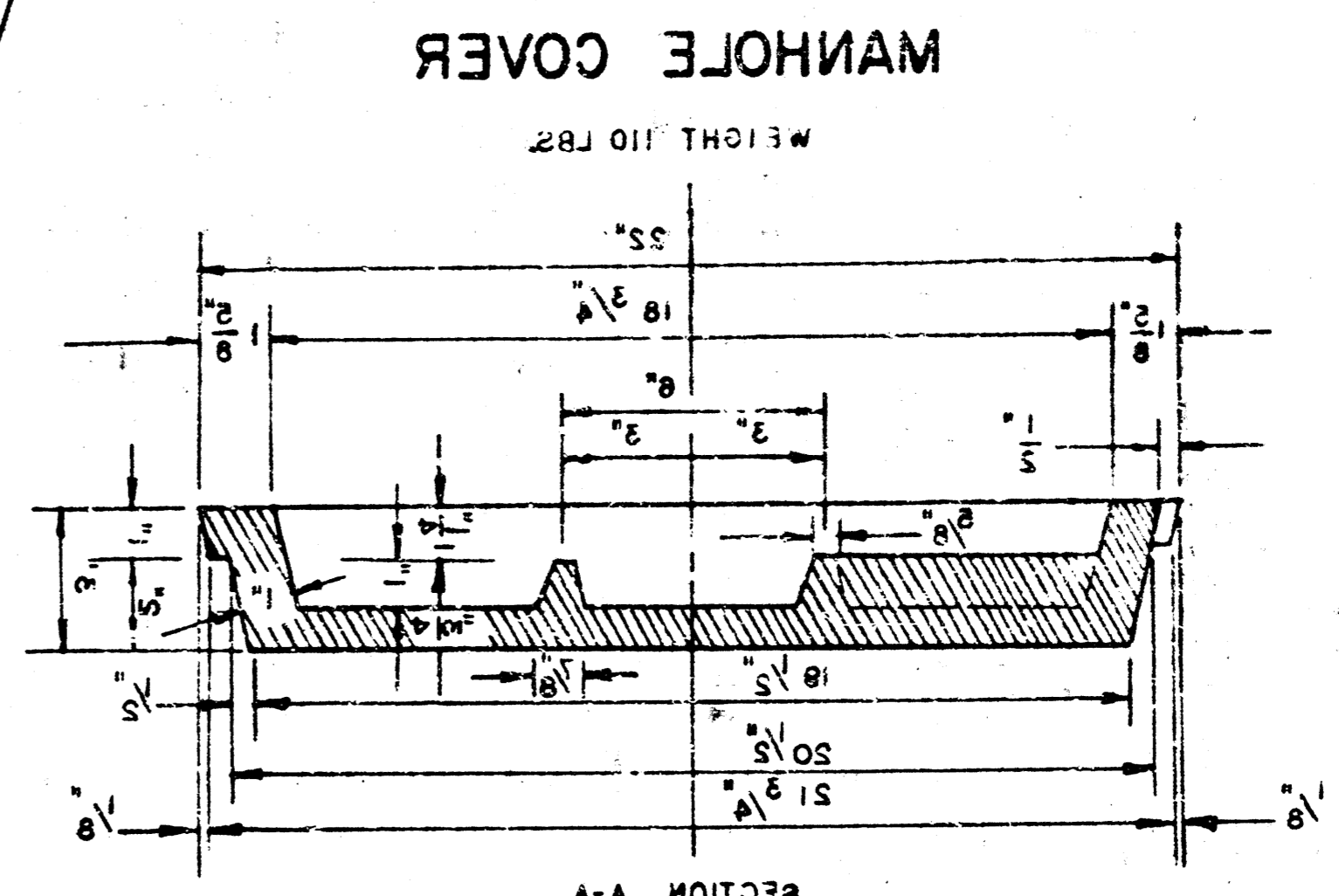
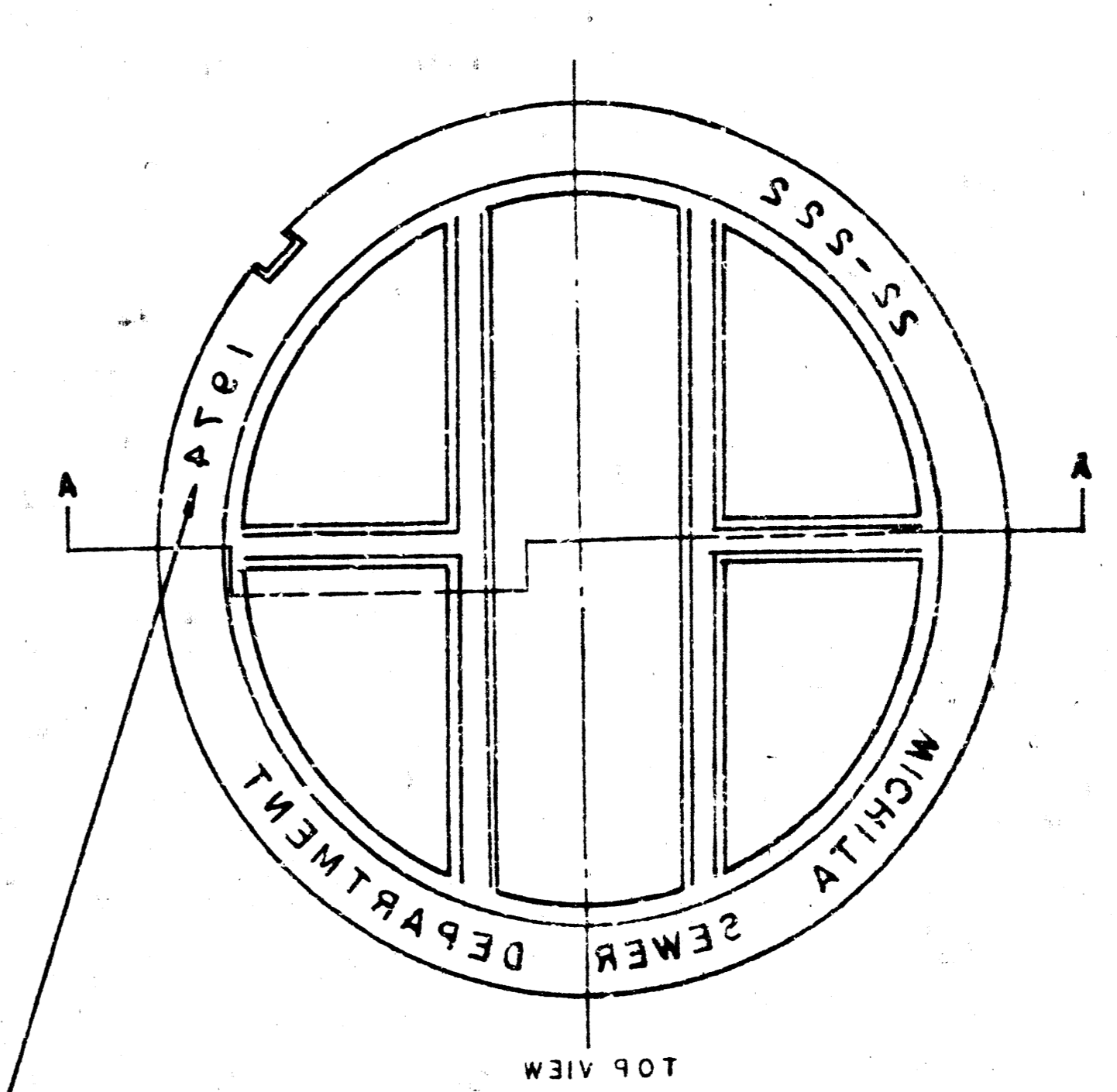
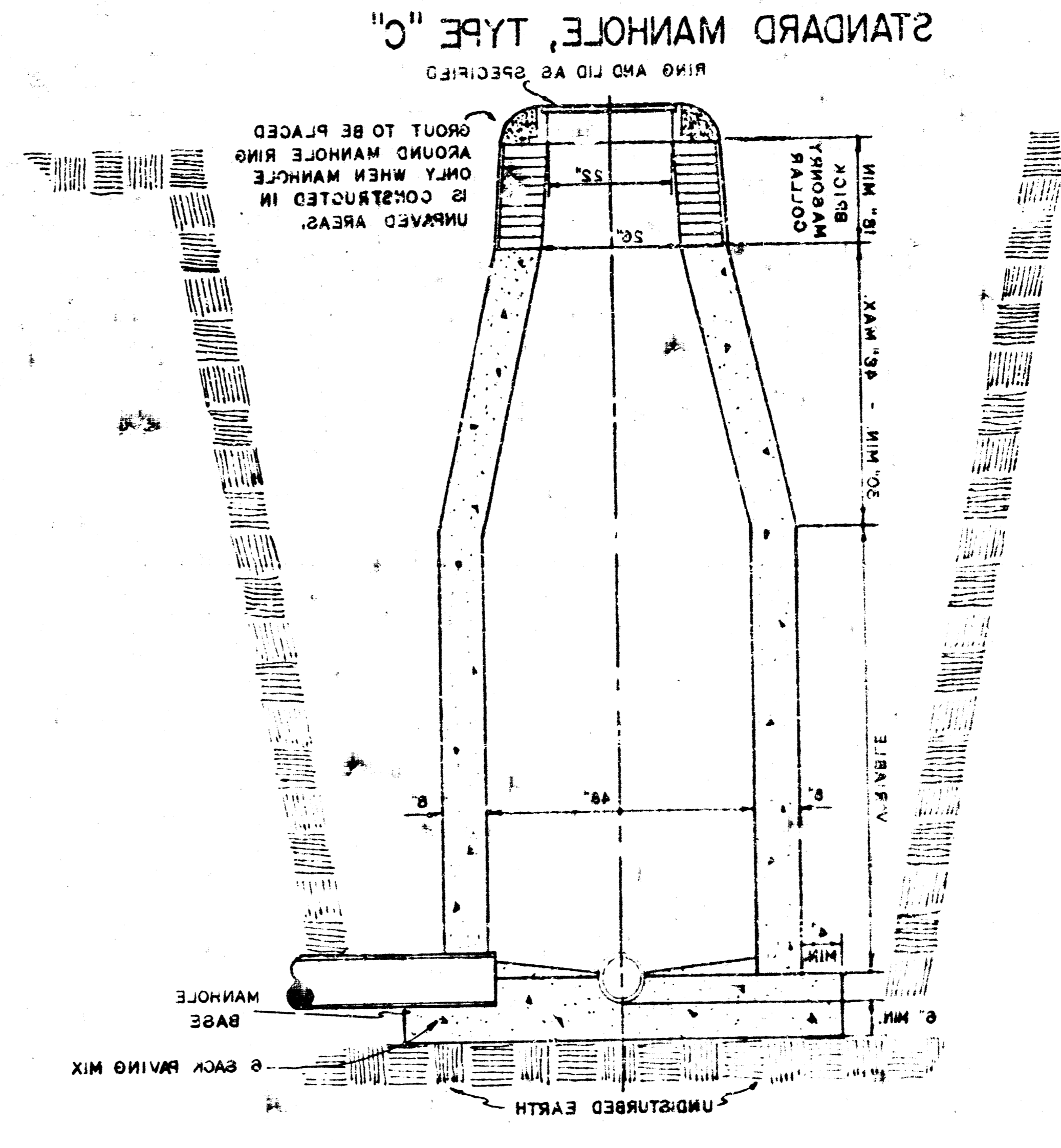
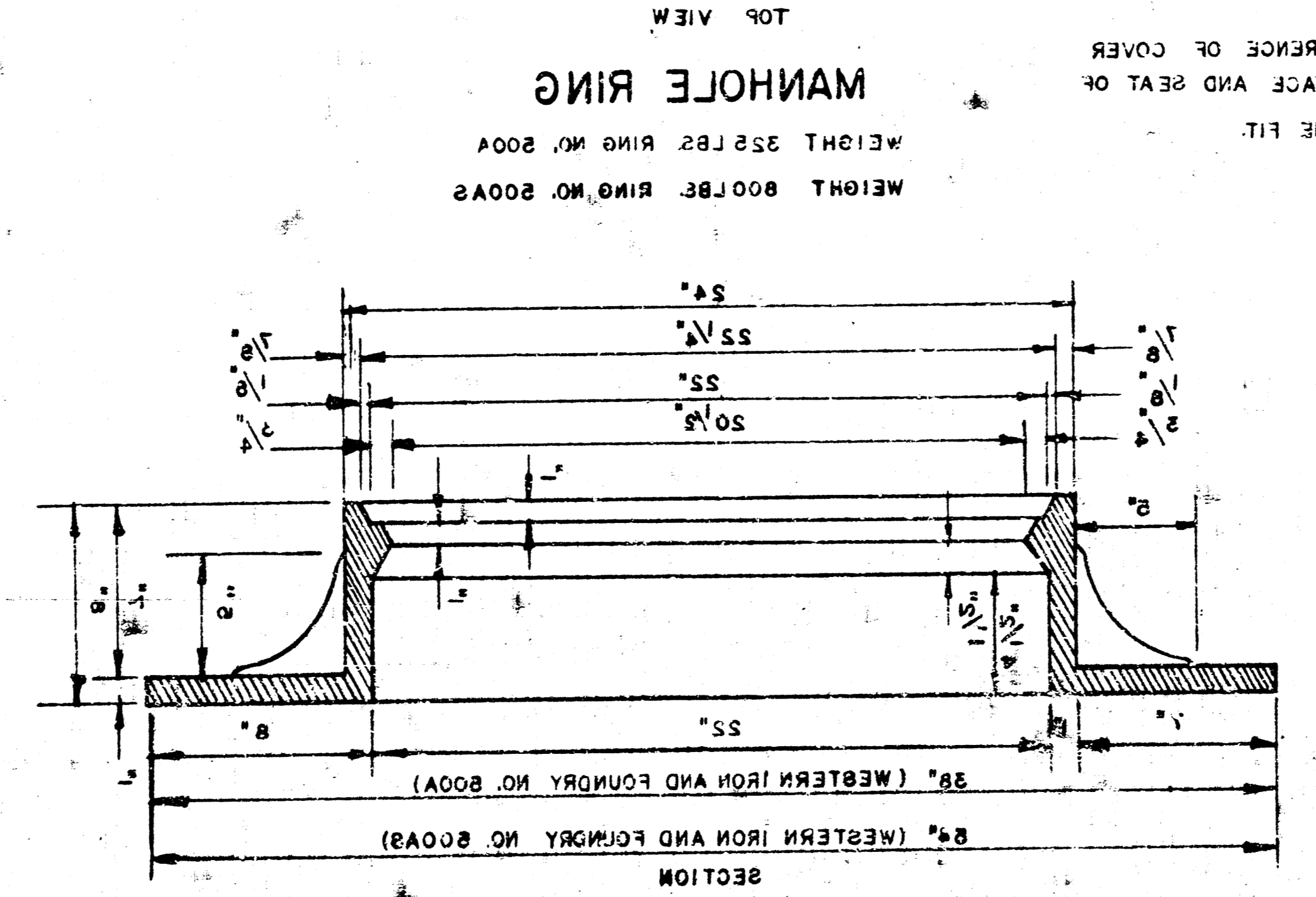
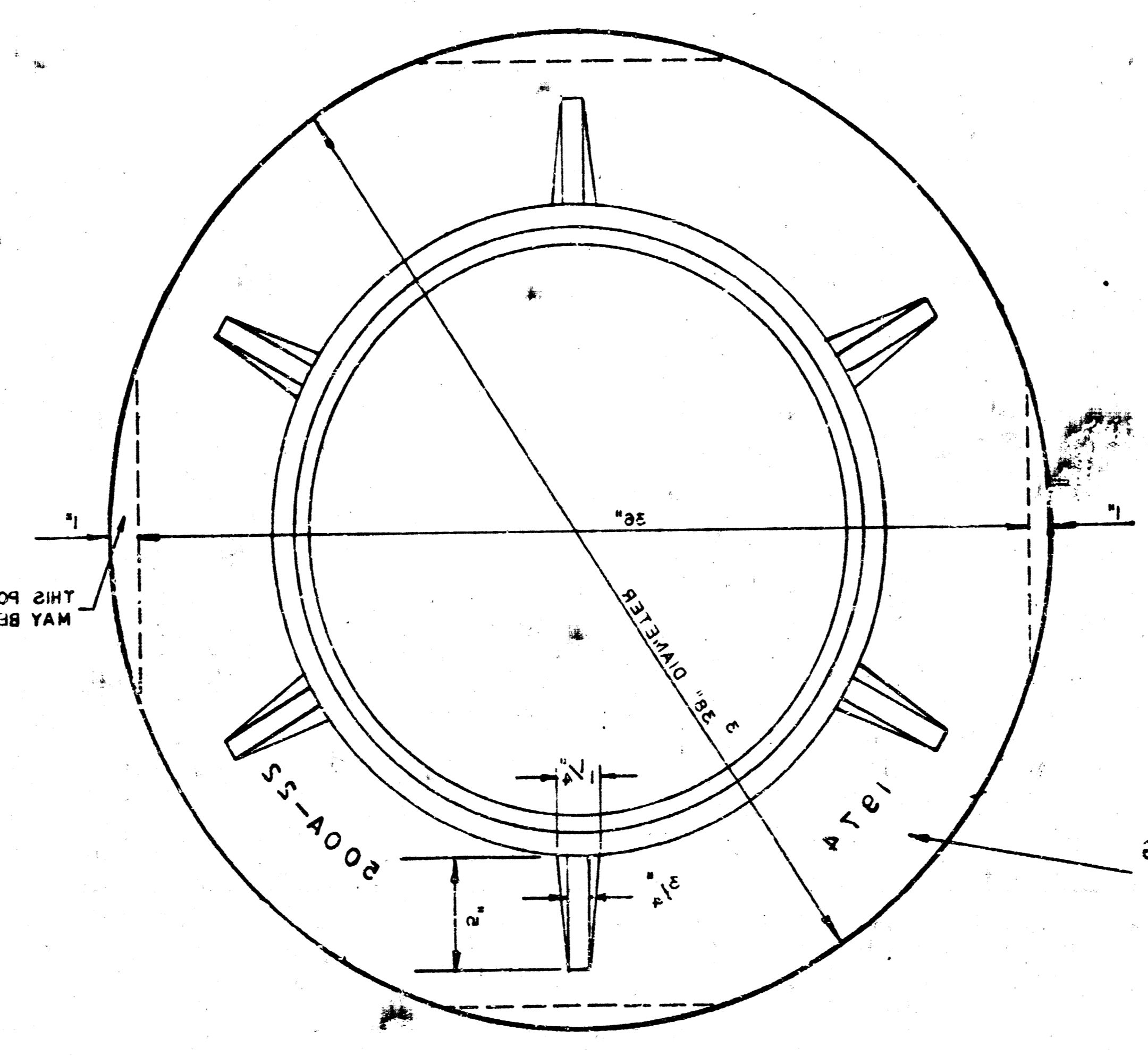
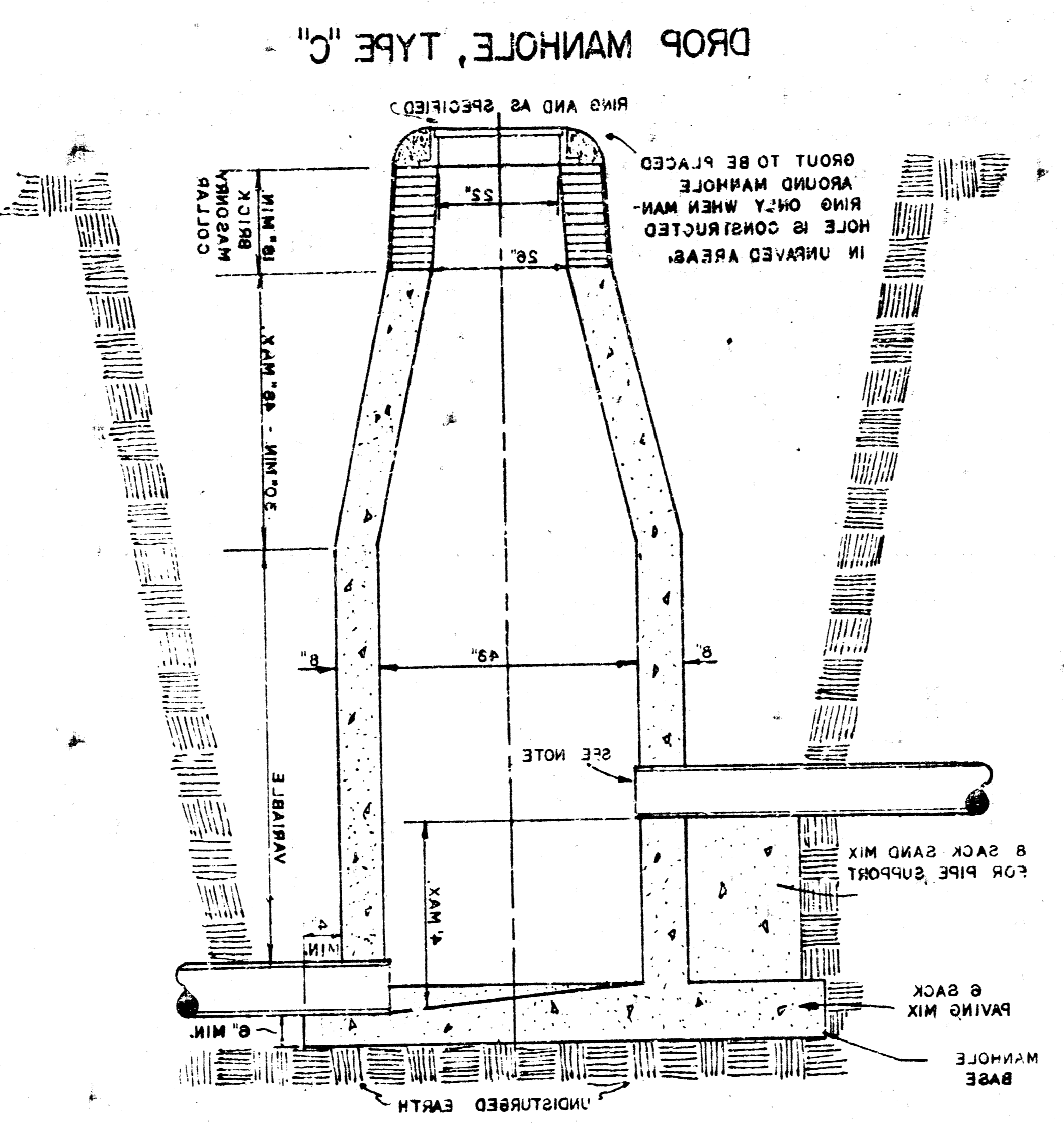
SEWER APPURTENANCES
 ADOPTED AS STANDARD DESIGN
 BY
 ENGINEERING DIVISION
 CITY OF WICHITA, KANSAS

1924
 R. W. LINN
 CITY ENGINEER
 CITY OF WICHITA, KANSAS
 ENGINEERING DIVISION
 BY
 ADOPTED AS STANDARD DESIGN
 SEWER APPURTENANCES
 DETAILS OF

GENERAL NOTES
 MORTAR USED IN MASONRY CONSTRUCTION SHALL CONTAIN 8 SACKS OF CEMENT PER CUBIC YARD.
 STANDARD MANHOLES TYPE "C" AND STANDARD DROP MANHOLES TYPE "C" SHALL BE BID AS STANDARD MANHOLES FOR THE TYPE AND DIAMETER INDICATED.
 OUTSIDE DROP MANHOLES TYPE "C" SHALL BE BID AS STANDARD OUTSIDE DROP MANHOLES FOR THE TYPE AND DIAMETER INDICATED. ALL MANHOLES INDICATED OTHERWISE MANHOLES WITH PIPE SIZES LARGER THAN 24" SHALL BE 2 FT DIAMETER. THE FLOOR OF ALL MANHOLES SHALL BE SHAPED TO INCREASE HYDRAULIC EFFICIENCY USING 8 SACK SAND MIX CONCRETE.
 CAST IN PLACE CIRCULAR CONCRETE MANHOLES ARE TO BE CONSTRUCTED ONLY ON SEWERS NOT SUBJECT TO DETERIORATION OF CONCRETE DUE TO FORMATION OF HYDROGEN SULFIDE GAS AND IN LOCATIONS WHERE IT IS OBSERVED THAT ANY ADJUSTMENT OF THE MANHOLE TOP ELEVATION WHICH MAY BE NECESSARY WILL NOT REQUIRE MODIFICATION OF THE CONCRETE BARREL.



NOTE: OPENING FOR INLET PIPE CUT IN MANHOLE WALL AND PIPE GROUTED IN PLACE WITH NON-SHRINKING GROUT. EXTERIOR OF COMPLETED CONNECTION TO BE SEALED WITH APPROVED COATING.



YEAR CASTING IS MADE

MANHOLE RING