

RESOURCE LISTS

GAS CO.
KANSAS GAS & ELECTRIC
 JIM STULTZ, P.E.
 1021 EAST 26TH STREET NORTH
 WICHITA, KANSAS 67219
 PH: (316) 832-3122

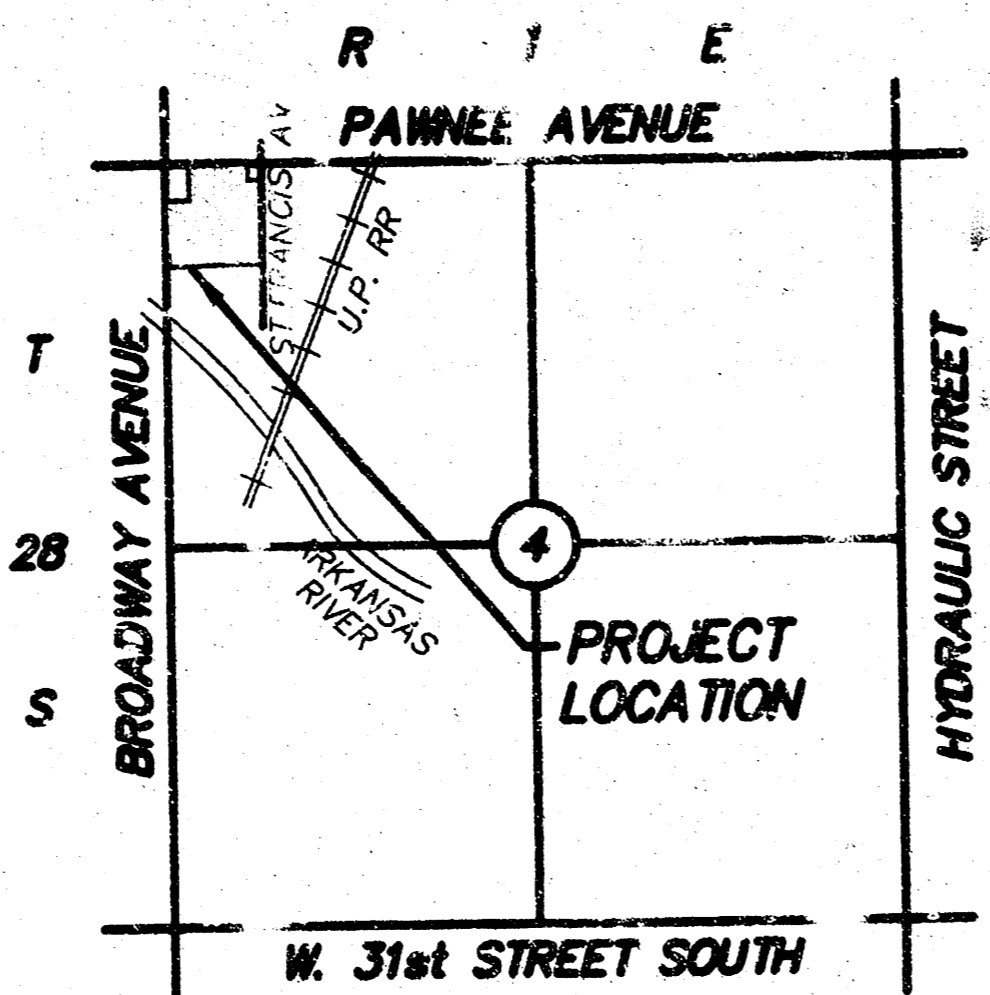
ELECTRIC
KGA&E (WESTAR ENERGY)
 SHANE PRICE
 1800 E. CENTRAL
 WICHITA, KANSAS 67201
 PH: (316) 261-6665

SANITARY SEWER
CITY OF WICHITA ENGINEERING
 WICKY HUANG, P.E.
 455 N. MAIN (7TH FLOOR)
 WICHITA, KANSAS 67202
 PH: (316) 268-4236

WATER
CITY OF WICHITA WATER & SEWER DEPT.
 BILL PERKINS
 455 N. MAIN (8TH FLOOR)
 WICHITA, KANSAS 67202
 PH: (316) 268-4555

CITY OF WICHITA ENGINEERING
 JULIA RHE KALYAN, P.E.
 455 N. MAIN (7TH FLOOR)
 WICHITA, KANSAS 67202
 PH: (316) 268-4632

TELEPHONE
SWBT
 GREG SHARPE
 154 NORTH BROADWAY, ROOM 480
 WICHITA, KANSAS 67202
 PH: (316) 268-2245



SANITARY SEWER PLAN
WAL-MART
SUPERCENTER #1099-01

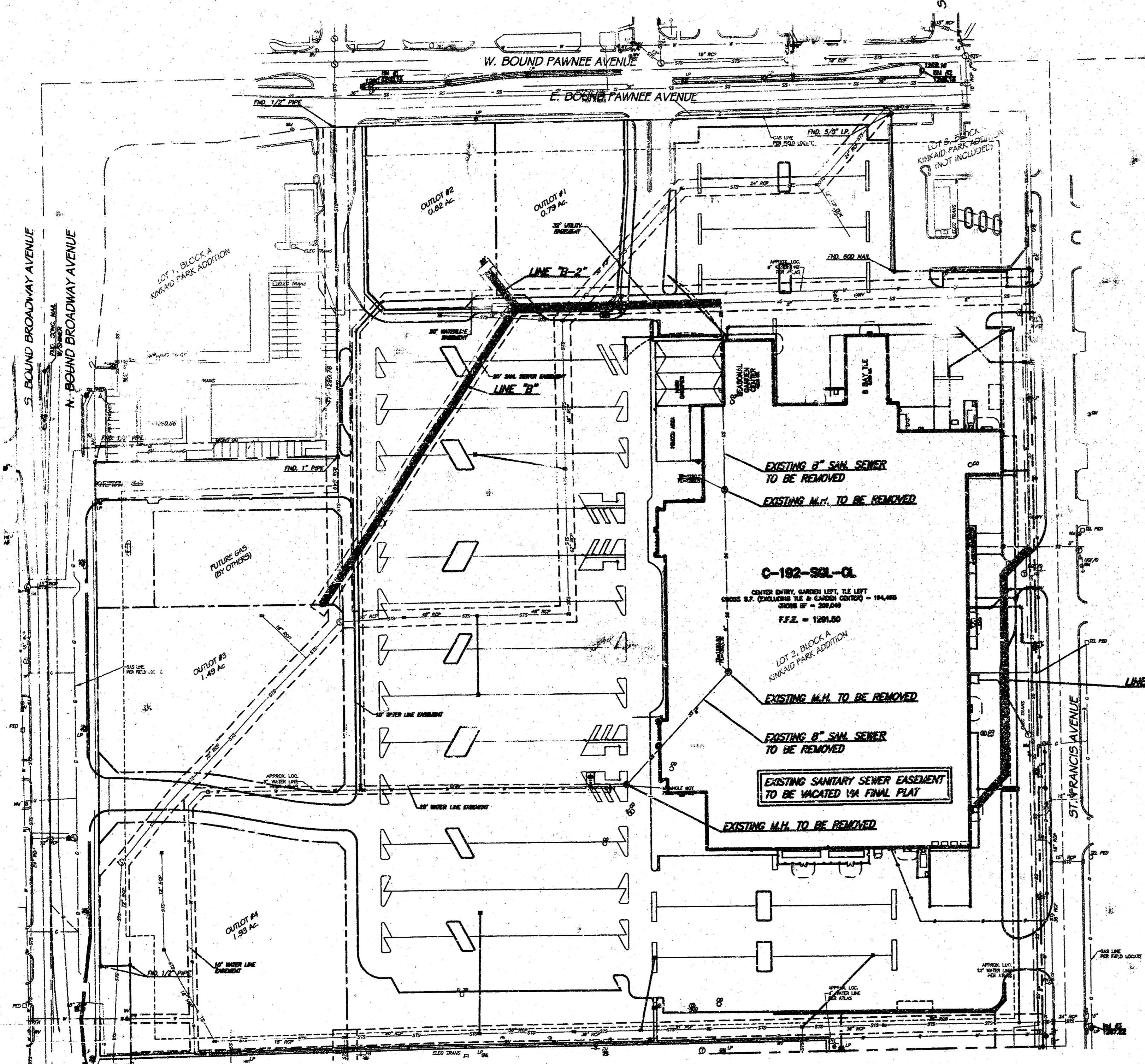
LOT 1

PUBLIC PROJECT NUMBER 1362PPS (607861)
 CITY OF WICHITA, KANSAS

NEIL D. CABLE, P.E. CITY ENGINEER
 MONTH 2003

SHEET INDEX

- SS-1 TITLE SHEET
- SS-2 SANITARY SEWER PLAN & PROFILE
- SS-3 SANITARY SEWER PLAN & PROFILE
- SS-4 MISCELLANEOUS CITY SANITARY SEWER DETAILS
- SS-5 MISCELLANEOUS SANITARY SEWER DETAILS



Legal Description

A tract of land lying in the Northwest Quarter (NW/4) of Section Four (4), Township Twenty-eight (28) South, Range One (1) East of the 6th P.M., also being a part of the recorded plat of KINKAID PARK, an addition to Wichita, Sedgwick County, Kansas, being more particularly described as follows:
 Lot Two (2), Block A, KINKAID PARK, an addition to Wichita, Sedgwick County, Kansas. Said tract contains a mathematical error of closure of 1:94,592,190.
 Said tract contains 1,180,290 square feet or 27.0957 acres more or less.

APPROVED AS NOTED
 BY CITY ENGINEER OF WICHITA
 Sanitary Sewer VRH 8/22/03
 Storm Sewer _____
 Driveway Approaches _____
 Water Mains _____
 Paving _____

NOTE TO CONTRACTORS
 Inspection and testing for this project are to be provided by a Licensed Consulting Engineering Firm under contract with the Owner/Developer. Said inspection is to be in accordance with the City of Wichita standard construction engineering practices and certified by a Licensed Professional Engineer. No work shall be performed in dedicated easements or public right-of-way by the Contractor without such inspection, nor shall any work be commenced without written authorization by the City Engineer.

General Notes

1. Contractor will be required to provide notice to utility companies a minimum of forty-eight (48) hours prior to any excavation, as follows:
 Kansas One-Call 687-2470
 The Contractor must notify the following in case of an emergency:
 Cox Communications 262-0651
 Kansas Gas Service Company 383-8000
 Kansas Gas & Electric Company 383-8000
 Peoples Gas Company 1-800-333-0357
 Southwestern Bell Telephone Company 1-800-370-5300
 City of Wichita Water Department 268-4000
 City of Wichita Sewer Department 268-4071
2. All water mains and appurtenances shall be installed in accordance with City of Wichita, Kansas Standards Specifications for Water Main Installations No. 14533.
3. Opening and closing of water valves shall be done slowly to prevent damage to the water distribution system from water hammer. All valves closed by the contractor must be reopened as new construction permits. Project inspector must ascertain that any valve closed by the contractor is reopened. Contractor will be permitted to operate water valves only when the project inspector assigned to the project is present.
4. All disturbed R/W areas not intended for pavement or sidewalk construction shall be seeded with Kansas Premium Fescue Blend at a rate of 8 lb./1000 Sq. Ft., fertilized with a 16-0-0 rate of a rate of 4 lb./1000 Sq. Ft. and mulched with Prairie Hay at a rate of 32 lb./1000 Sq. Ft. Mulch shall be "patted" with forks or punched into soil to reduce loss due to wind.
5. Utility service lines, poles, valve boxes, meters, etc. that are to be adjusted as necessary by others prior to construction unless the plans specifically call for their adjustment by the Contractor or unless the plans specifically identify a utility to be adjusted by the owner during construction. Existing utilities and their location, as shown on the plans represent the best information obtainable. Existing utilities shall be field verified. The contractor will be required to work around existing utilities within the right-of-way which do not conflict with proposed construction.
6. The water main shall be constructed on the alignment shown by the plans. Trees and shrubs which are in direct conflict with proposed new construction shall be removed by the Contractor with the Engineer's approval. Trees and shrubs which are not in direct conflict with proposed new construction shall be saved and protected from damage.
7. Contractor shall not start work on the project until the project inspector is assigned to the project and is present on the site. Contractor shall not start on the project until all necessary bonds and permits have been obtained. Any work done without inspection will be required to be uncovered for inspection.
8. Rubble from the removal of miscellaneous structures and excess excavation which is to be wasted shall be disposed of on sites to be provided by the Contractor. These sites shall be approved by the Engineer as to suitability, appearance and site location. Locations that, in the opinion of the Engineer, will leave an unsightly appearance will not be approved. All disposed sites must be approved by the Kansas Dept. of Health and Environment. Material either stockpiled or disposed of in a flood plain would require a Kansas State Board of Agriculture permit. Any material dumped in waters of the United States or wetlands is subject to U.S. Corps of Engineers permitting regulations. Any material buried or stockpiled beyond approved construction limits would require additional archeological investigations unless buried in a previously approved borrow location.

CONTRACTOR:
 NOWAK CONST.CO.
 200 S. GODDARD RD.
 GODDARD, KS. 67052

AS-BUILTS SEPT. 2004

SANITARY SEWER PLAN

WAL-MART SUPERCENTER #1099-01

PAWNEE & BROADWAY
WICHITA, KANSAS

SPEAR & McCALEB CO., P.C.
 815 West Main - Oklahoma City, OK 73106
 PH: 405-232-7715 Fax: 405-232-7859
 KANSAS CERTIFICATE OF AUTHORIZATION NO. E-335 EXP. DEC. 2004

No. Revision	By	Date
1	OTB/PLG	7/23/03
2	CHANGES PER CITY COMMENTS	8/04/03

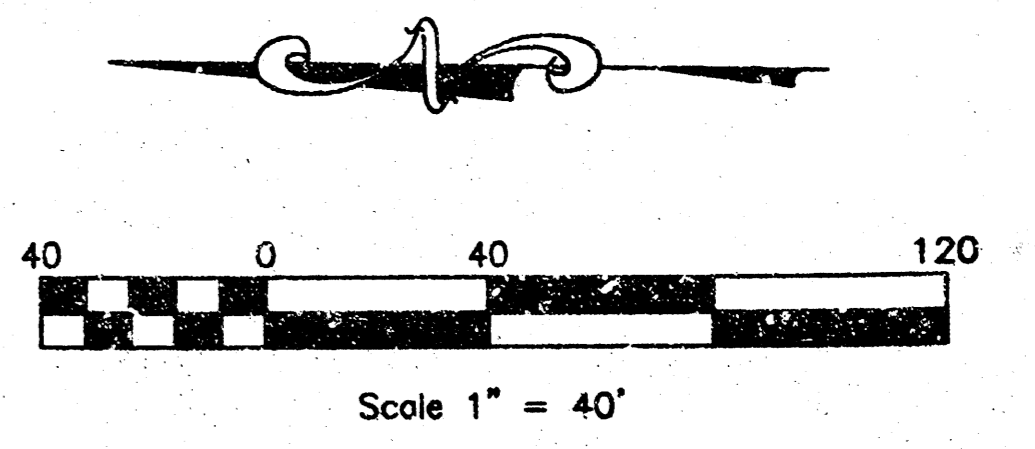
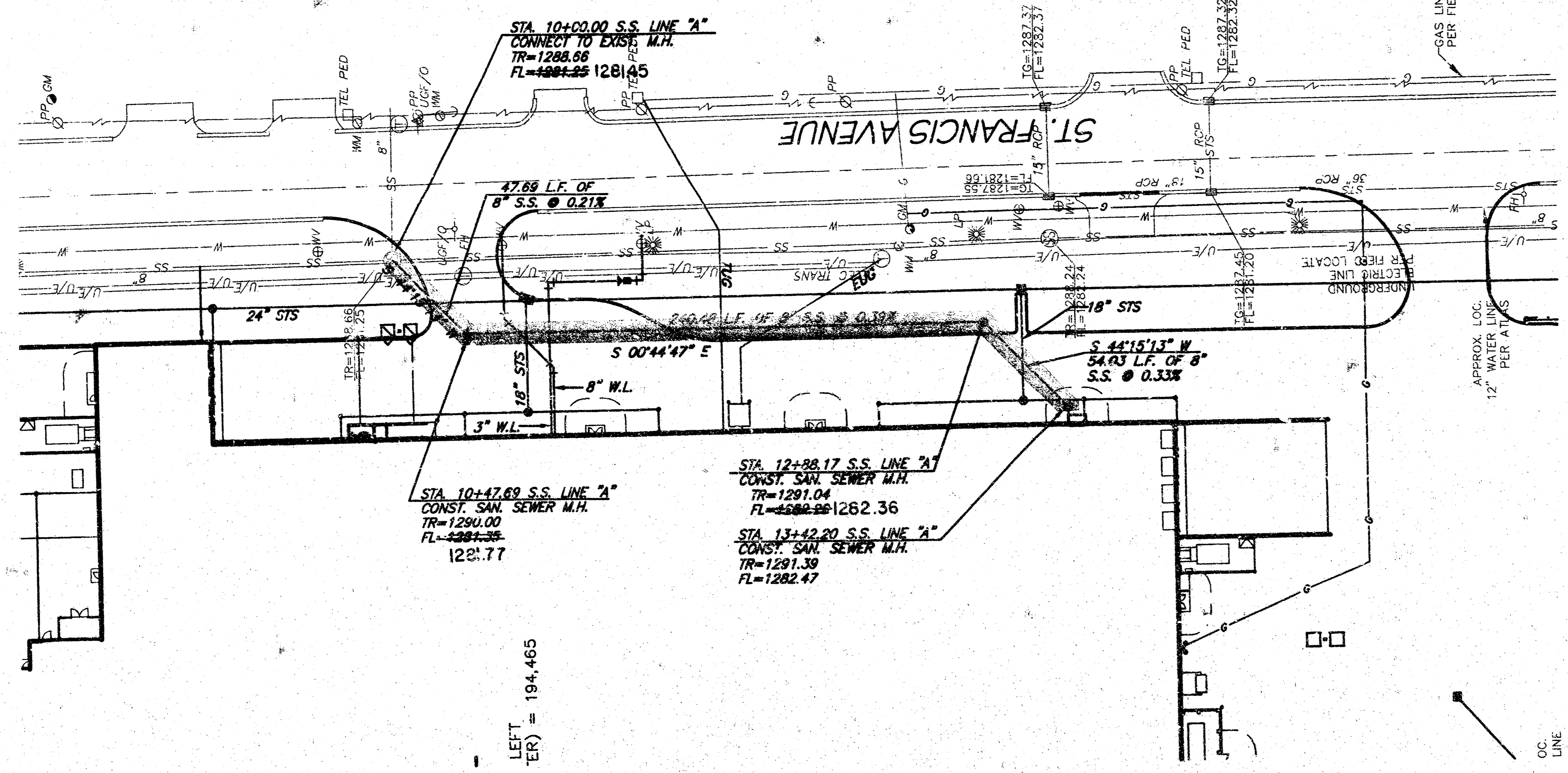
DATE: 07/15/03 SCALE: N.T.S. SHEET NO. SS1

DRAWN BY: _____
 PROJECT NO.: 3800
 ENGINEER: TERENCE L. HAYNES, P.E. #14563

NOT VALID FOR CONSTRUCTION UNLESS SIGNED IN THIS BLOCK

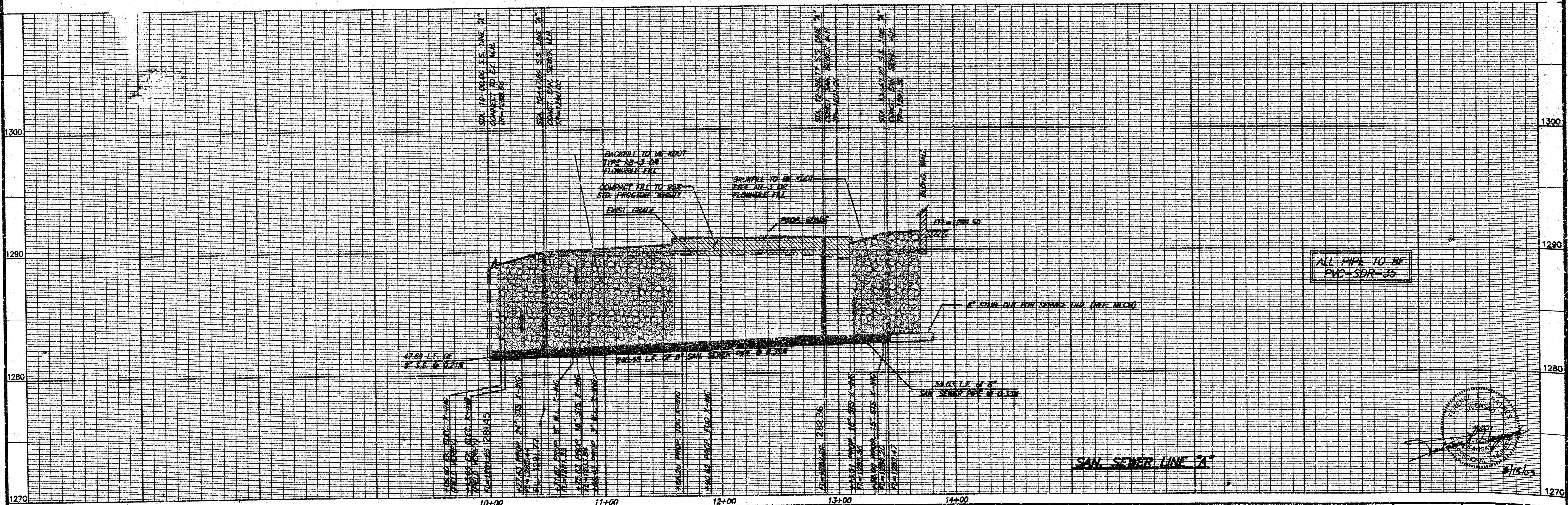
- BENCHMARKS**
- BM #1 CUT "X" ON NOSE OF MEDIAN AT PAWNEE & TOPEKA ELEV=1280.14
 - BM #2 CUT "X" ON W. END MEDIAN CL. PAWNEE N. OF N.E. PROPERTY CORNER ELEV=1286.16
 - BM #3 R.R. SPIKE IN POWER POLE APPROX. 20' N. OF S.E. PROP. COR. ON E. SIDE ST. FRANCIS ELEV=1287.52
 - BM #4 CUT "X" ON TOP OF CURB @ S.E. BROADWAY & S. EXT. TO WAL-MART ELEV=1290.08

14 07 01 03

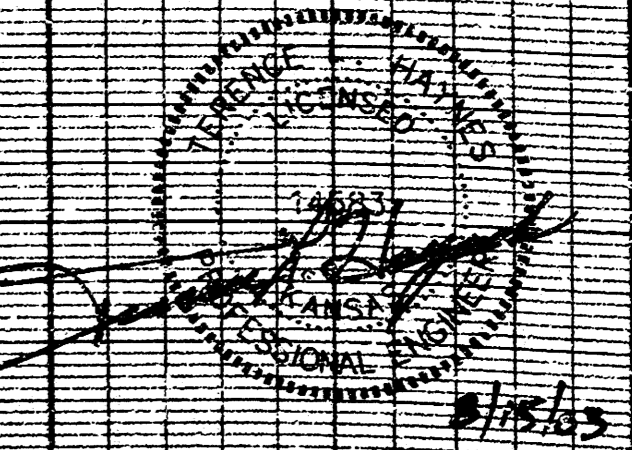


CAUTION - NOTICE TO CONTRACTOR

THE CONTRACTOR IS SPECIFICALLY CAUTIONED THAT THE LOCATION AND/OR ELEVATION OF EXISTING UTILITIES AS SHOWN ON THESE PLANS IS BASED ON RECORDS OF THE VARIOUS UTILITY COMPANIES AND, WHERE POSSIBLE, MEASUREMENTS TAKEN IN THE FIELD. THE INFORMATION IS NOT TO BE RELIED ON AS BEING EXACT OR COMPLETE. THE CONTRACTOR MUST CALL THE APPROPRIATE UTILITY COMPANY AT LEAST 48 HOURS BEFORE ANY EXCAVATION TO REQUEST EXACT FIELD LOCATION OF UTILITIES. IT SHALL BE THE RESPONSIBILITY OF THE CONTRACTOR TO RELOCATE ALL EXISTING UTILITIES WHICH CONFLICT WITH THE PROPOSED IMPROVEMENTS SHOWN ON THE PLANS.

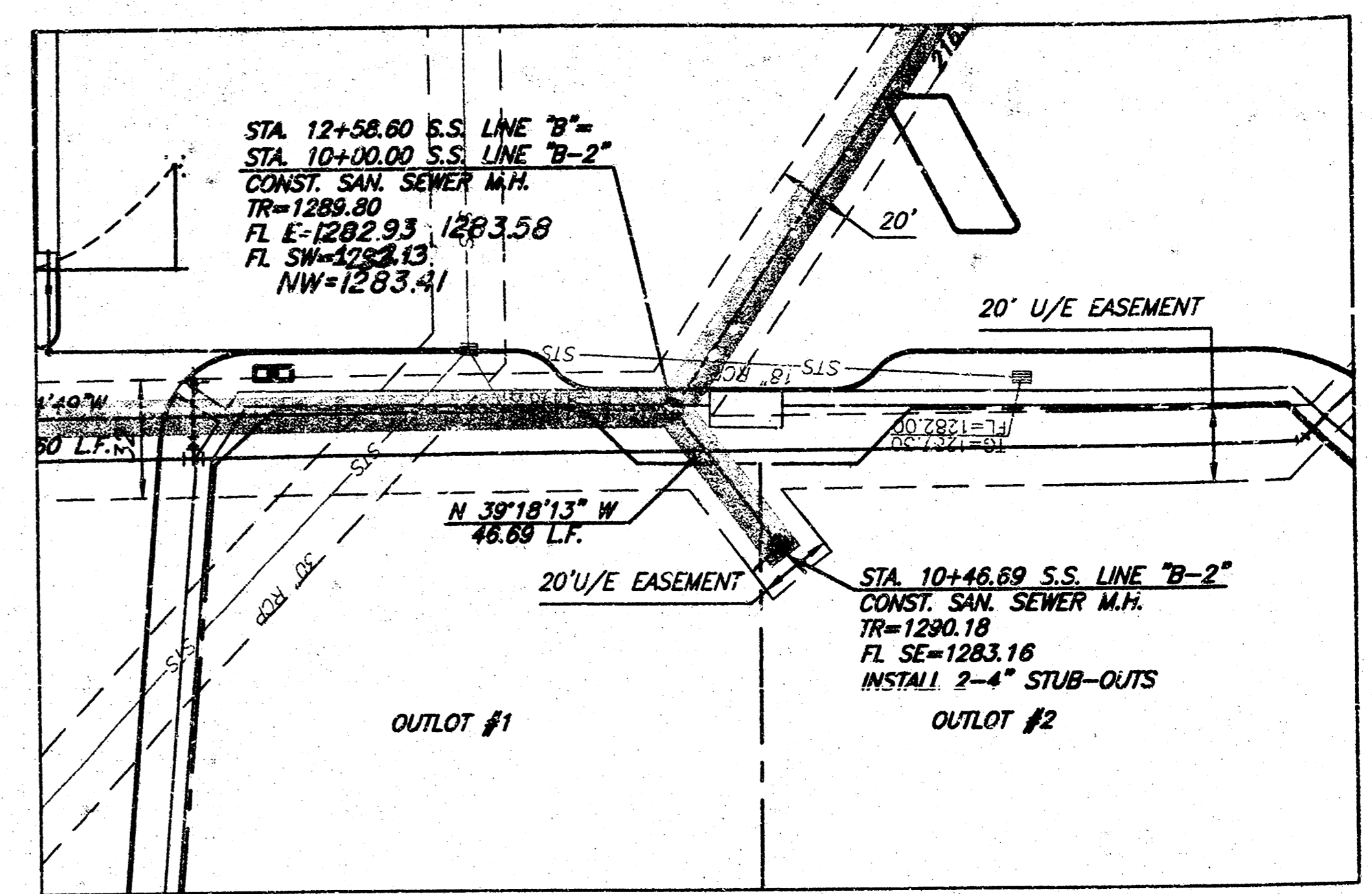
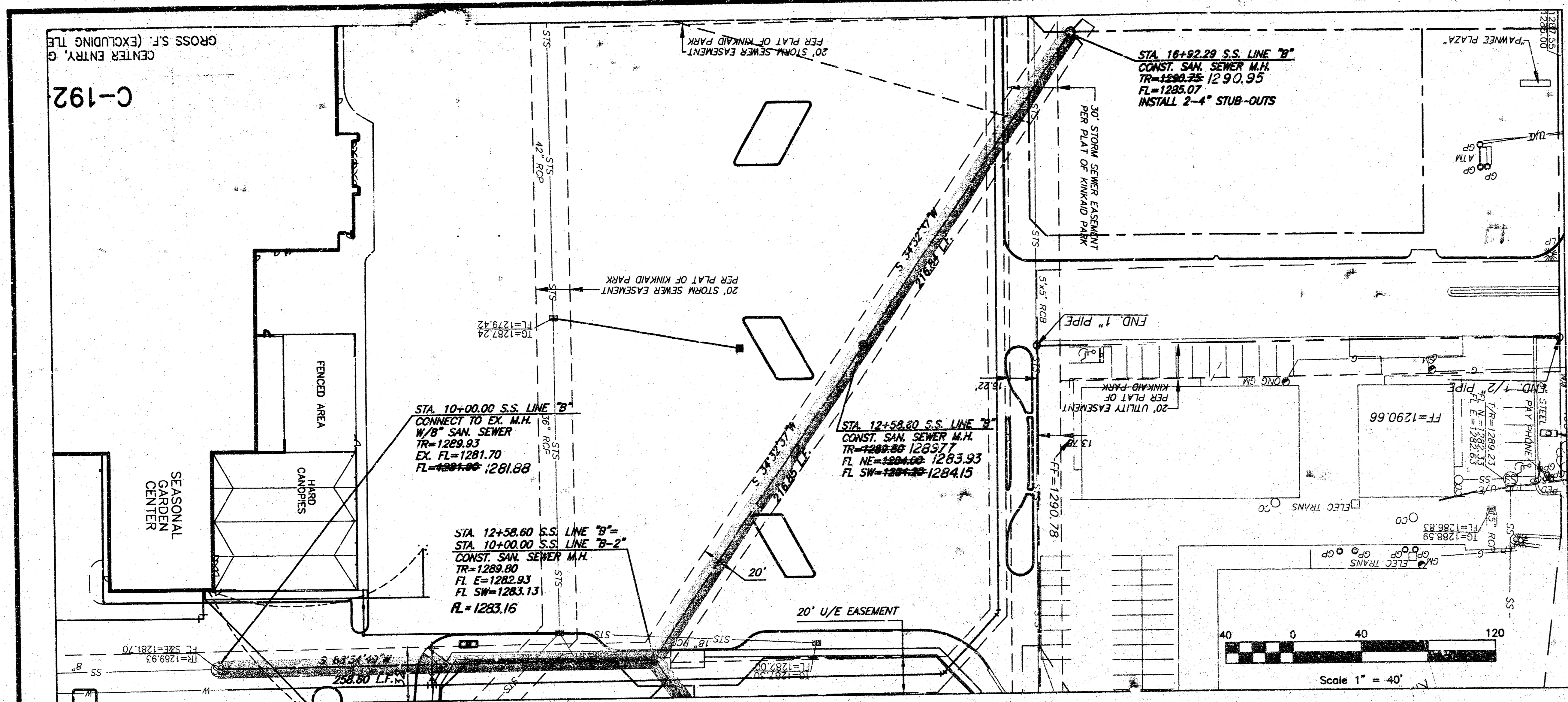


ALL PIPE TO BE
PVC-SDR-35



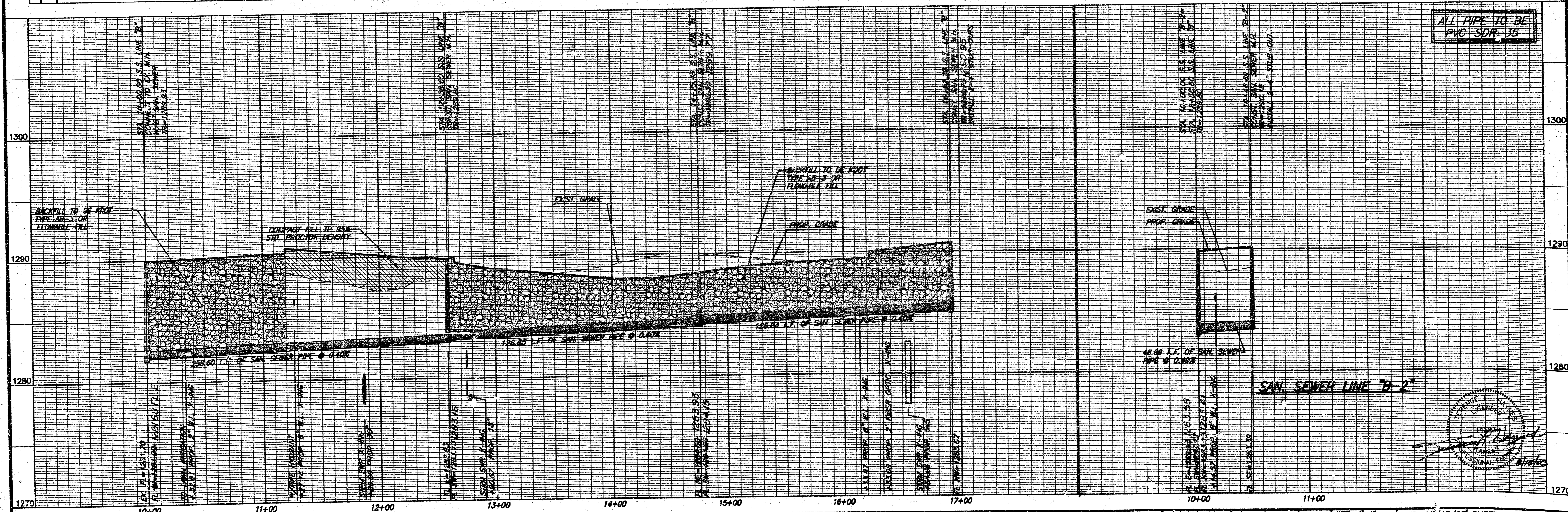
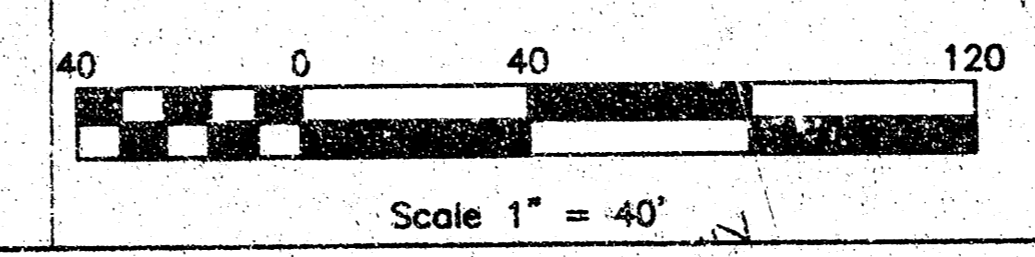
CROSS S.F. (EXCLUDING THE CENTER ENTRY, C

C-192

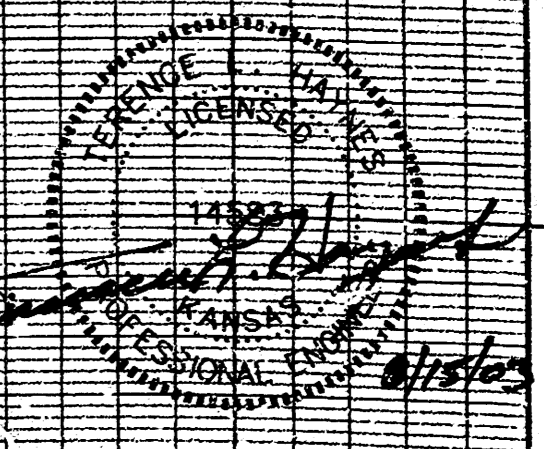


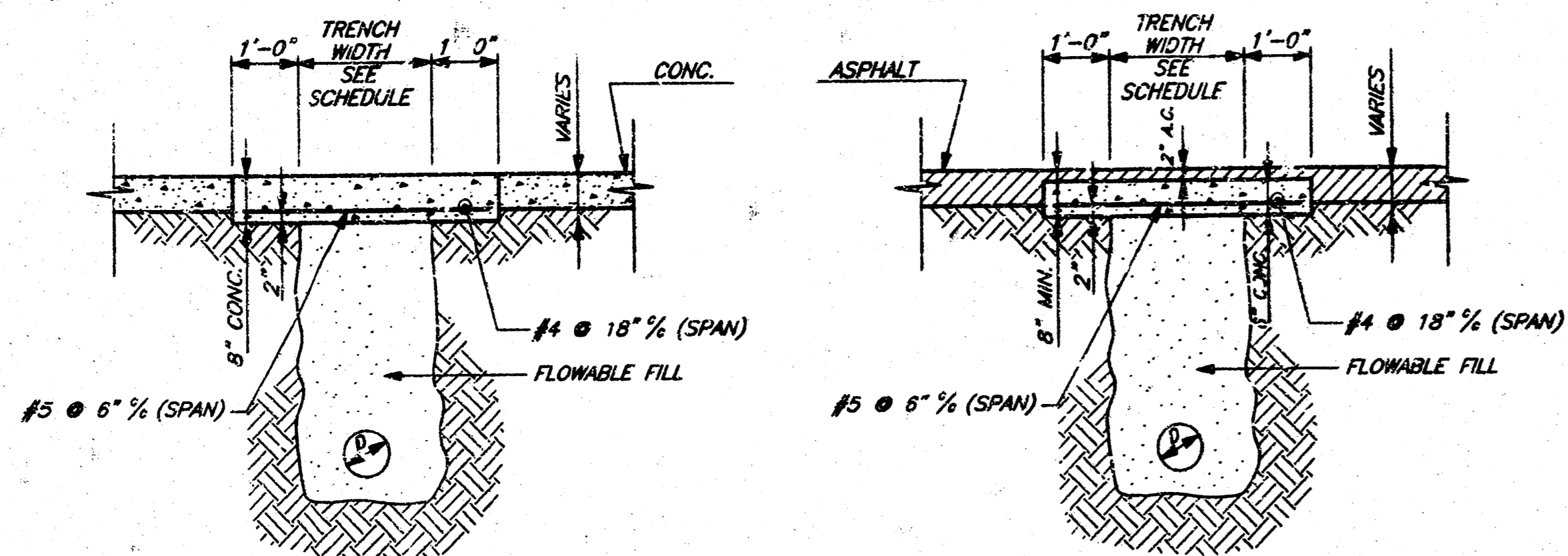
CAUTION - NOTICE TO CONTRACTOR

THE CONTRACTOR IS SPECIFICALLY CAUTIONED THAT THE LOCATION AND/OR ELEVATION OF EXISTING UTILITIES AS SHOWN ON THESE PLANS IS BASED ON RECORDS OF THE VARIOUS UTILITY COMPANIES AND, WHERE POSSIBLE, MEASUREMENTS TAKEN IN THE FIELD. THE INFORMATION IS NOT TO BE RELIED ON AS BEING EXACT OR COMPLETE. THE CONTRACTOR MUST CALL THE APPROPRIATE UTILITY COMPANY AT LEAST 48 HOURS BEFORE ANY EXCAVATION TO REQUEST EXACT FIELD LOCATION OF UTILITIES. IT SHALL BE THE RESPONSIBILITY OF THE CONTRACTOR TO RELOCATE ALL EXISTING UTILITIES WHICH CONFLICT WITH THE PROPOSED IMPROVEMENTS SHOWN ON THE PLANS.



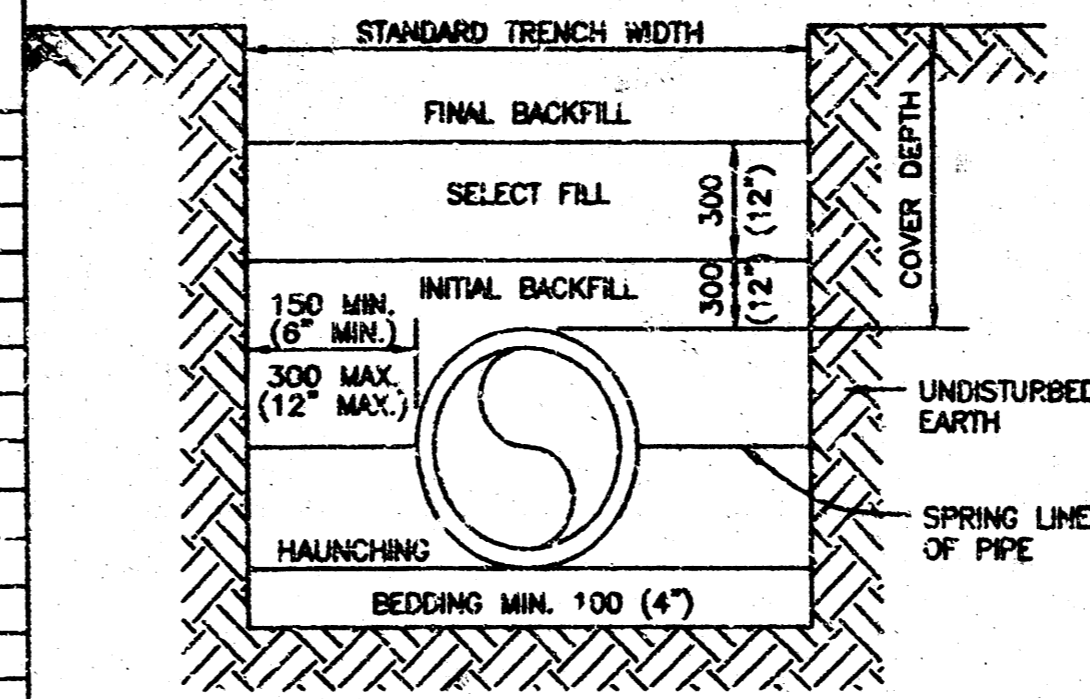
ALL PIPE TO BE PVC-SDR-35





TYPICAL SECTION PAVING CUTS AND PERMANENT REPAIRS
(TAFT AVENUE)

PIPE INSIDE DIAMETER		STANDARD TRENCH WIDTH	
MM	IN.	MM	IN.
150	6	450	18
200	8	600	24
250	10	750	30
300	12	900	36
375	15	900	36
450	18	900	36
525	21	1,050	42
600	24	1,050	42
675	27	1,200	48
750	30	1,200	48
900	36	1,350	54
1,050	42	1,500	60
1,200	48	1,650	66



BACKFILL DESCRIPTION	NON-PAVED AREAS			PAVED AREAS (See Note B)		
	PVC	DUCTILE IRON	HDPE	PVC	DUCTILE IRON	HDPE
	EXCAVATED MATERIAL	EXCAVATED MATERIAL	EXCAVATED MATERIAL	SBM	SBM	SBM
FINAL BACKFILL	SELECT FILL	SELECT FILL	SELECT FILL	SBM	SBM	SBM
INITIAL BACKFILL	COVER ≤ 10'-SAND OR SBM > 10'-SBM	SELECT FILL	COVER ≤ 10'-SAND OR SBM > 10'-SBM	SBM	SBM	SBM
HAUNCHING	COVER ≤ 10'-SAND OR SBM > 10'-SBM	SELECT FILL	COVER ≤ 10'-SAND OR SBM > 10'-SBM	SBM	SBM	SFM
BEDDING	See Note 5	See Note 5	See Note 5	See Note 5	See Note 5	See Note 5

- NOTES:
- INSTALLATION AND BACK FILLING SHALL MEET MANUFACTURERS RECOMMENDATIONS.
 - SELECT FILL CONSISTS OF EXCAVATED MATERIALS CONTAINING NO ROCKS LARGER THAN 50 MM (2").
 - STANDARD BEDDING MATERIAL (SBM) SHALL CONFORM TO THE TYPE AND AGGREGATE BASE OR FLOWABLE FILL PER CITY OF WICHITA STANDARDS.
 - COMPACTION REQUIREMENTS:
 - 95% MAXIMUM STANDARD PROCTOR DENSITY IN ACCORDANCE WITH ASTM D698.
 - SEEDING SHALL BE 100 MM (4") SAND OR TYPE A3-3 AGGREGATE BASE.
 - IN SANDY SOIL, CONTRACTOR MAY BACKFILL WITH NATIVE MATERIAL AND USE WARNING TAPE 18" ABOVE PIPE.
 - NO WATER JETTING ALLOWED.
 - THE BACKFILL MATERIAL SHALL EXTEND A MINIMUM OF 2-FEET BEHIND THE BACK OF CURB, OR THE EDGE OF PAVEMENT WHERE NO CURB EXISTS.
- METRIC UNITS ARE IN MM WITH ENGLISH UNITS IN PARENTHESIS, UNLESS INDICATED OTHERWISE.

PIPE TRENCHING AND BEDDING

AS-BUILTS SEPT. 2004

(PRIVATE) SANITARY SEWER DETAILS

WAL-MART SUPERCENTER #1099-01

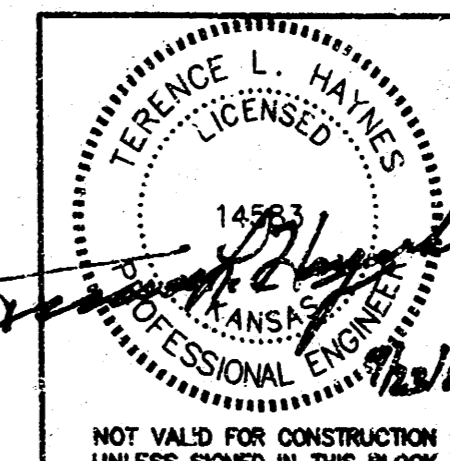
PAWNEE & BROADWAY
WICHITA, KANSAS

SPEAR & McCALEB CO., P.C.

815 West Main - Oklahoma City, OK 73106
PH: 405-232-7715 Fax: 405-232-7859

KANSAS CERTIFICATE OF PROFESSIONAL ENGINEERING NO. E-335 EXP. DEC. 2004

SNC



DATE: 07/15/03

DRAWN BY:

PROJECT NO.: 3800

SCALE:

N.T.S.

SHEET NO.

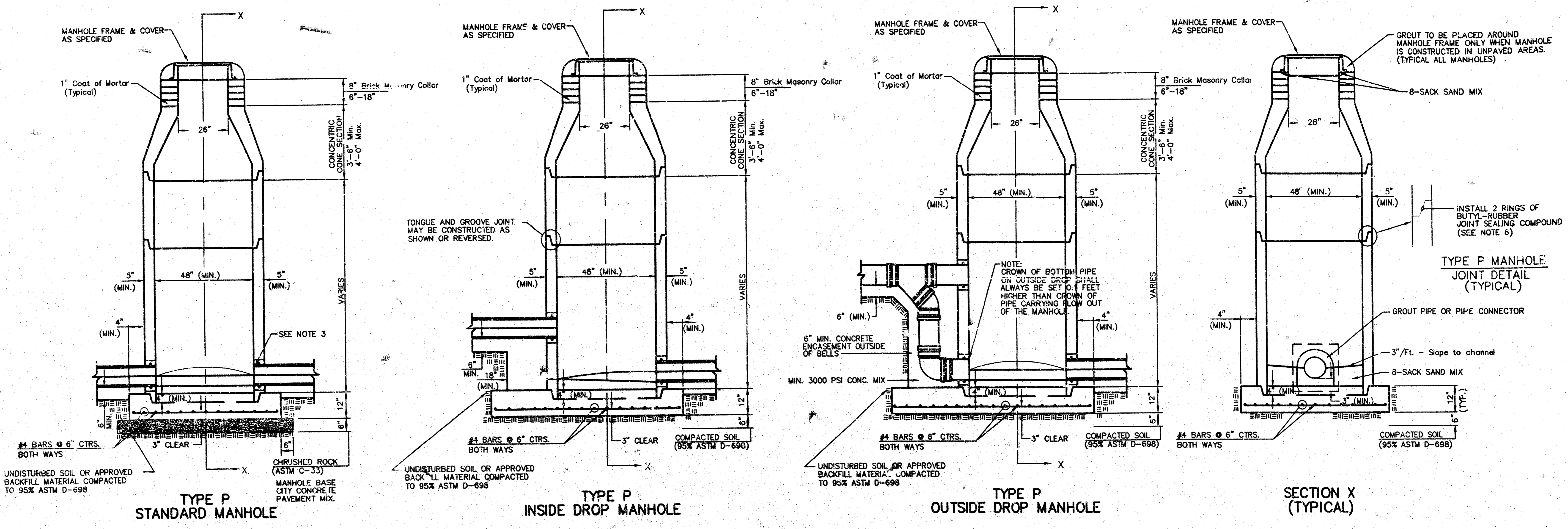
SS4

ENGINEER:

NOT VALID FOR CONSTRUCTION UNLESS SIGNED IN THIS BLOCK

299 S&E
Jawohn
22

SEWER APPURTENANCES DETAILS



- GENERAL NOTES**
- PRECAST MANHOLE NOTES**
- ALL PRECAST CONCRETE MANHOLE SECTIONS SHALL CONFORM TO THE LATEST REVISION OF A.S.T.M. C478 AS MODIFIED BY THE SPECIFICATIONS.
 - NON-SHRINK GROUT SHALL BE NON-METALLIC TYPE.
 - APPROVED FLEXIBLE WATERSTOP GASKETS SHALL BE INSTALLED TO JOIN THE SEWER TO THE MANHOLE WALL WHEN A.B.S. COMPOSITE PIPE OR P.V.C. PIPE IS USED. FOR OTHER TYPES OF PIPE THE SEWER PIPE SHALL BE GROUDED IN PLACE WITH NON-SHRINK GROUT. THE SEWER PIPE SHALL BE SUPPORTED WITH CONCRETE EXCAVATION A MINIMUM OF 3 FEET FROM THE MANHOLE WALL AND TO THE FIRST JOINT FOR V.C.P. SUCH THAT THE JOINT REMAINS FLEXIBLE.
 - ALL INSIDE SURFACES OF THE CONCRETE MANHOLE WHICH WOULD BE EXPOSED TO SEWER GAS SHALL BE COATED WITH 2 COATS THEMEX SERIES 66 HI-BUILD EPOXYLINE, DRY THICKNESS OF 8 MILS (MIN).
 - EXTERIOR MANHOLE WALLS SHALL BE COATED WITH 1 COAT MOBILARMA 633 BITUMINOUS COATING.
 - JOINT SEALING COMPOUND SHALL BE KENT SEAL NO. 2 OR APPROVED EQUAL.
 - PRECAST MANHOLES SHALL BE SET AT LEAST 4 INCHES INTO THE MANHOLE BASE.
 - TOP OF MANHOLE FLOOR SLAB SHALL BE AT LEAST 3 INCHES BELOW THE FLOW LINE OF THE OUTLET PIPE TO INSURE SUFFICIENT MINIMUM THICKNESS OF SHAPED INVERT.
 - LIFTING HOLES SHALL BE FILLED WITH NON-SHRINK GROUT AND THE INTERIOR SURFACE COATED AS SPECIFIED.
 - MORTAR USED IN MASONRY CONSTRUCTION SHALL CONTAIN 8 SACKS OF CEMENT PER CUBIC YARD. CONCRETE USED IN MANHOLE BASES SHALL CONFORM TO THE REQUIREMENTS OF CONCRETE FOR CONCRETE PAVEMENT CONSTRUCTION AS SPECIFIED IN THE CITY STANDARD PAVING SPECIFICATIONS USING CITY CONCRETE PAVEMENT MIX WITHOUT AIR ENTRAINING ADMIXTURE. MORTAR SHALL BE PLACED AROUND THE MANHOLE RING AS SHOWN ON THE DRAWINGS WHEN MANHOLES ARE CONSTRUCTED IN UNPAVED AREAS. MANHOLES CONSTRUCTED WHERE PIPE SIZES ARE SMALLER THAN 24" SHALL HAVE AN INSIDE DIAMETER OF 4". MANHOLES CONSTRUCTED WHERE PIPE SIZES ARE 24" OR LARGER SHALL HAVE AN INSIDE DIAMETER OF 5". COMPLETED MANHOLE SHALL BE WITHOUT LEAKS AND WATER TIGHT.

- REINFORCING STEEL SHALL BE INSTALLED IN THE MANHOLE BASES AND SHALL CONSIST OF NO. 4 BARS PLACED ON 6" CENTERS IN BOTH DIRECTIONS. THE MANHOLE BASE REINFORCEMENT SHALL BE PLACED AT LEAST 3" ABOVE THE BOTTOM OF THE MANHOLE BASE. ALL COSTS FOR FURNISHING AND INSTALLING REINFORCING STEEL SHALL BE INCLUDED IN THE UNIT PRICE BID FOR THE MANHOLE.
- OPENINGS SHALL BE CUT INTO THE MANHOLE WALL WHEN OUTSIDE DROPS ARE CONSTRUCTED ON EXISTING MANHOLES. SUCH OPENINGS CUT INTO EXISTING MANHOLES SHALL BE AS SMALL AS PRACTICAL TO FACILITATE INSTALLING AND GROUDED THE NEW PIPE IN PLACE. WATERSTOP GASKETS SHALL BE USED WITH P.V.C. AND A.B.S. COMPOSITE PIPE. THE NEW PIPE SHALL BE GROUDED INTO THE OPENING USING AN APPROVED NONSHRINK GROUT FOR THE FULL MANHOLE WALL THICKNESS. THE EXTERIOR OF THE COMPLETED CONNECTION SHALL BE SEALED WITH AN APPROVED BITUMINOUS COATING SUCH THAT THE CONNECTION WILL BE WATER TIGHT. FLOOR OF MANHOLE SHALL BE MODIFIED TO FORM NEW FLOW CHANNEL FOR THE NEW CONNECTION AS INDICATED BY THE DRAWING. THIS WORK, INCLUDING MODIFICATION OF MANHOLE FLOOR, SHALL BE PAID FOR AT THE UNIT PRICE BID FOR OUTSIDE DROP STACK CONSTRUCTED ON EXISTING MANHOLE.
- THE FLOORS OF ALL MANHOLES SHALL BE SHAPED WITH FLOW CHANNELS SUCH THAT THE MANHOLES WILL BE SELF CLEANING AND FREE OF AREAS WHERE SOLIDS COULD BE DEPOSITED AS SEWAGE FLOWS THROUGH THE MANHOLE FROM ALL INLET PIPES TO THE OUTLET PIPE. FLOW CHANNELS SHALL BE FORMED TO MATCH THE BOTTOM HALVES OF THE INFLOWING PIPES AND THE OUTFLOWING PIPE AS SHOWN BY THE DRAWINGS EXCEPT FOR INSIDE DROP MANHOLES. FLOW CHANNELS FOR INSIDE DROP MANHOLES SHALL BE CONSTRUCTED AS INDICATED BY THE DRAWING. MANHOLE FLOORS SHALL HAVE SLOPES OF 3 INCHES PER FOOT IN THE AREAS OUTSIDE OF THE FLOW CHANNELS SLOPED TOWARD THE FLOW CHANNELS. PIPES LAID THROUGH MANHOLES SHALL HAVE THE TOP HALF REMOVED TO NEAT LINES FOR THE FULL INSIDE DIAMETER OF THE MANHOLE. MANHOLE FLOORS SHALL THEN BE SHAPED AROUND THE BOTTOM HALF OF THE PIPE WHICH FORMS THE FLOW CHANNEL.
- PIPES INSTALLED WITHIN THE EXCAVATION MADE FOR THE MANHOLE SHALL BE CRADLED WITH CONCRETE TO THE LIMITS OF THE MANHOLE EXCAVATION. WHEN CLAY PIPE IS USED, THE CRADLE SHALL EXTEND TO THE FIRST JOINT OUTSIDE THE MANHOLE. THE CRADLE SHALL BE TERMINATED AT THE CLAY PIPE JOINT IN A MANNER WHICH WILL MAINTAIN THE FLEXIBILITY OF THE JOINT. COST OF CRADLE WITHIN MANHOLE EXCAVATION OR TO CLAY PIPE JOINTS ADJACENT TO MANHOLE SHALL BE INCLUDED IN THE UNIT PRICE BID FOR THE MANHOLE.

- MANHOLE COVER CASTINGS AND MANHOLE FRAME CASTINGS SHALL CONFORM TO THE REQUIREMENTS AS INDICATED IN THE STANDARD SPECIFICATIONS AND AS SHOWN IN THE STANDARD DETAIL DRAWING.
- THE VERTICAL DROP IN INSIDE DROP MANHOLES SHALL NOT EXCEED 2' FOR INFLOWING PIPES SIZED 12" OR SMALLER AND 2' FOR INFLOWING PIPES LARGER THAN 12". THE CROWNS OF INFLOWING PIPES SHALL NEVER BE SET LOWER THAN THE CROWN OF THE OUTFLOWING PIPE.
- STANDARD MANHOLES AND STANDARD INSIDE DROP MANHOLES SHALL BE BID AS STANDARD MANHOLES FOR THE TYPE AND DIAMETER INDICATED. OUTSIDE DROP MANHOLES SHALL BE BID AS STANDARD OUTSIDE DROP MANHOLES FOR THE TYPE AND DIAMETER INDICATED. ALL MANHOLE DIAMETERS WILL BE 4' UNLESS INDICATED OTHERWISE.
- A BRICK MASONRY COLLAR SHALL BE INSTALLED BETWEEN THE CAST IRON FRAME AND THE CONCENTRIC CONE. THE COLLAR WILL HAVE 8" WALLS AND A VERTICAL HEIGHT OF 6" MINIMUM AND 18" MAXIMUM. A 1" COAT OF MORTAR WILL BE PLASTERED ON THE OUTSIDE OF THE COLLAR. THE USE OF PRE-CAST CONCRETE SPACERS FOR MANHOLE TOP ADJUSTMENT IS ALSO ALLOWED.
- CHRUISHED ROCK CONFORMING TO ASTM C-33 WITH A GRADATION OF NO. 67 SHALL BE INSTALLED AT THE BASE OF THE MANHOLE TO A DEPTH OF NO LESS THAN 6", AND SHALL EXTEND NO LESS THAN 6" OUTSIDE THE DIAMETER OF THE CONCRETE FLOOR OF THE MANHOLE.

AS-BUILTS SEPT. 2004

<p>THE CITY OF WICHITA</p> <p>CITY ENGINEER'S OFFICE CITY HALL - SEVENTH FLOOR 1501 NORTH MAIN STREET WICHITA, KANSAS 67202 (316) 261-1114 FAX</p>	STANDARD TYPE 'P' MANHOLES	
	NEIL D. CABLE, P.E. - CITY ENGINEER	
	PROJECT NUMBER XXX-XXXXX	INDEX CODE XXXXXX
	DATE MAR 96	SHEET NO. SS5

P&H/DWG 14 10 01 03