

PRIVATE SANITARY SEWER EXTENSION
TO SERVE

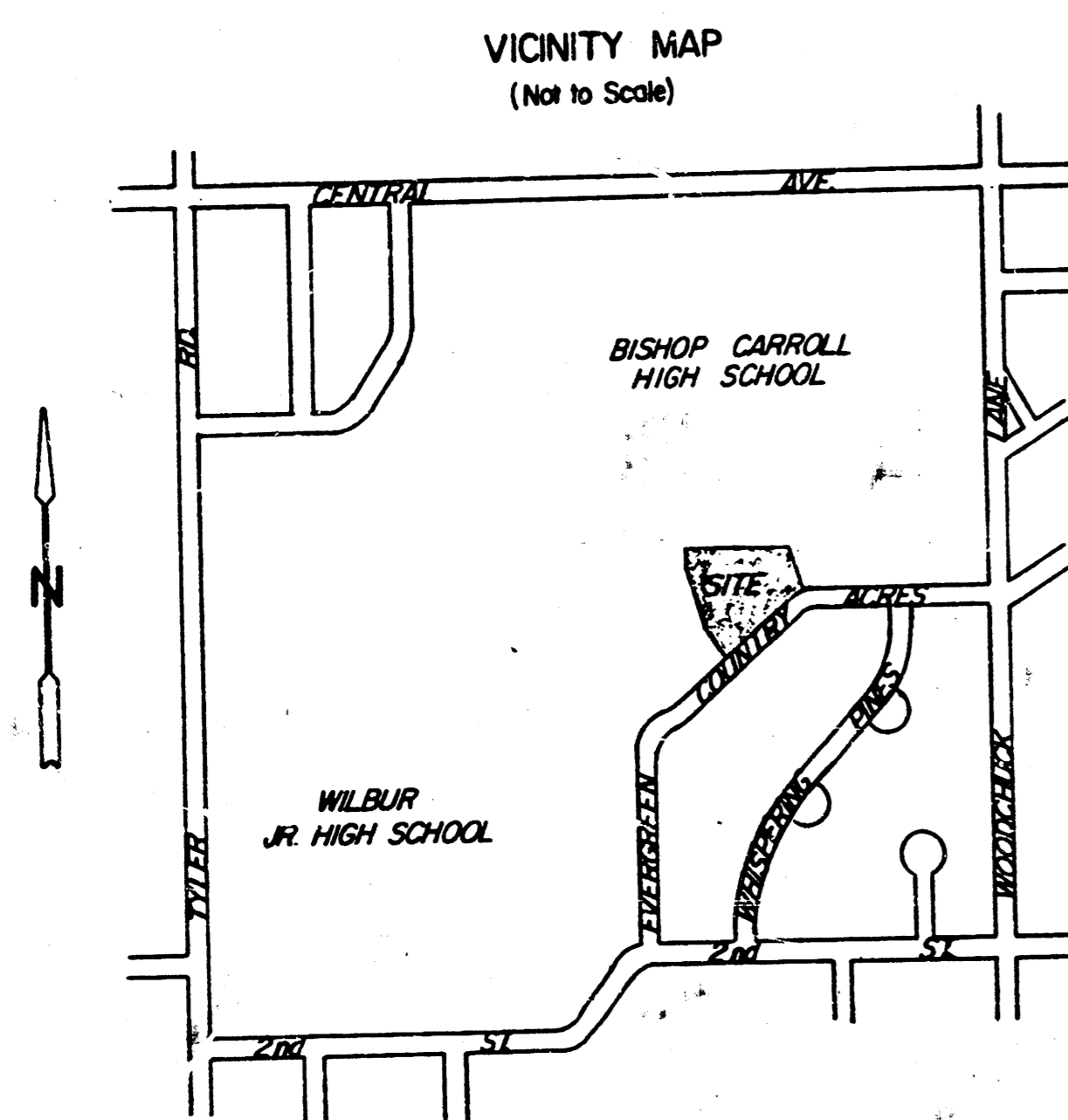
PART OF LOT 6, BLOCK 'I, WHISPERING PINES ESTATES
Wichita, Kansas

CITY OF WICHITA, KANSAS

M.E. LINDEBAK CITY ENGINEER

PROJECT NO. 468-76-245-80001-000-000-041

DATE: OCTOBER 1985



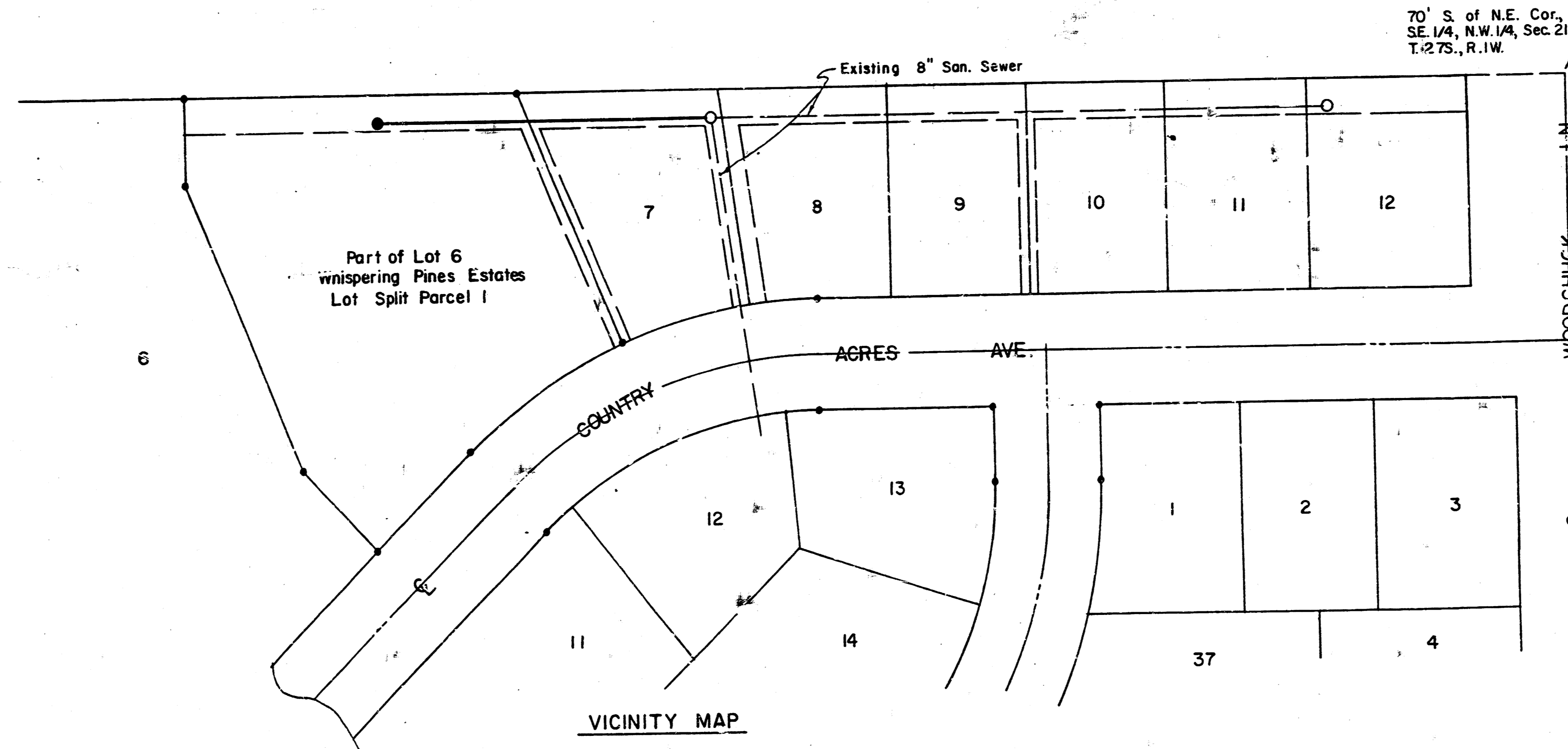
INDEX OF SHEETS

SHEET NO.	DESCRIPTION
1	TITLE SHEET
2	PLAN & PROFILE
3-5	STANDARDS

NOTIFY THE FOLLOWING COMPANIES PRIOR TO ANY TRENCHING.

ARKLA GAS CO.	942-8350
BELL TELEPHONE	268-3087
CABLEVISION	266-6817
KPL GAS SERVICE	263-7511
KANSAS GAS & ELEC.	261-6248
KANSAS ONE-CALL	1-800-DIG-SAFE
CALL BEFORE YOU DIG	1-800-571-2115

THE CONTRACTOR SHALL BE RESPONSIBLE FOR PRESERVING PROPERTY IRONS. THE CONTRACTOR SHALL BE REQUIRED TO RE-ESTABLISH ANY PROPERTY IRONS WHICH ARE DAMAGED OR DESTROYED BY HIS CONSTRUCTION OPERATIONS. SUCH IRONS SHALL BE RE-ESTABLISHED BY A LICENSED LAND SURVEYOR OR A LICENSED PROFESSIONAL ENGINEER IN ACCORDANCE WITH STATE LAWS.



N
1" = 60'

APPROVED AS NOTED
By CITY ENGINEER OF WICHITA
Sanitary Sewers *MLL 10/16/85*
Storm Sewers _____
Driveway Approaches _____
Water Mains _____
Paving _____

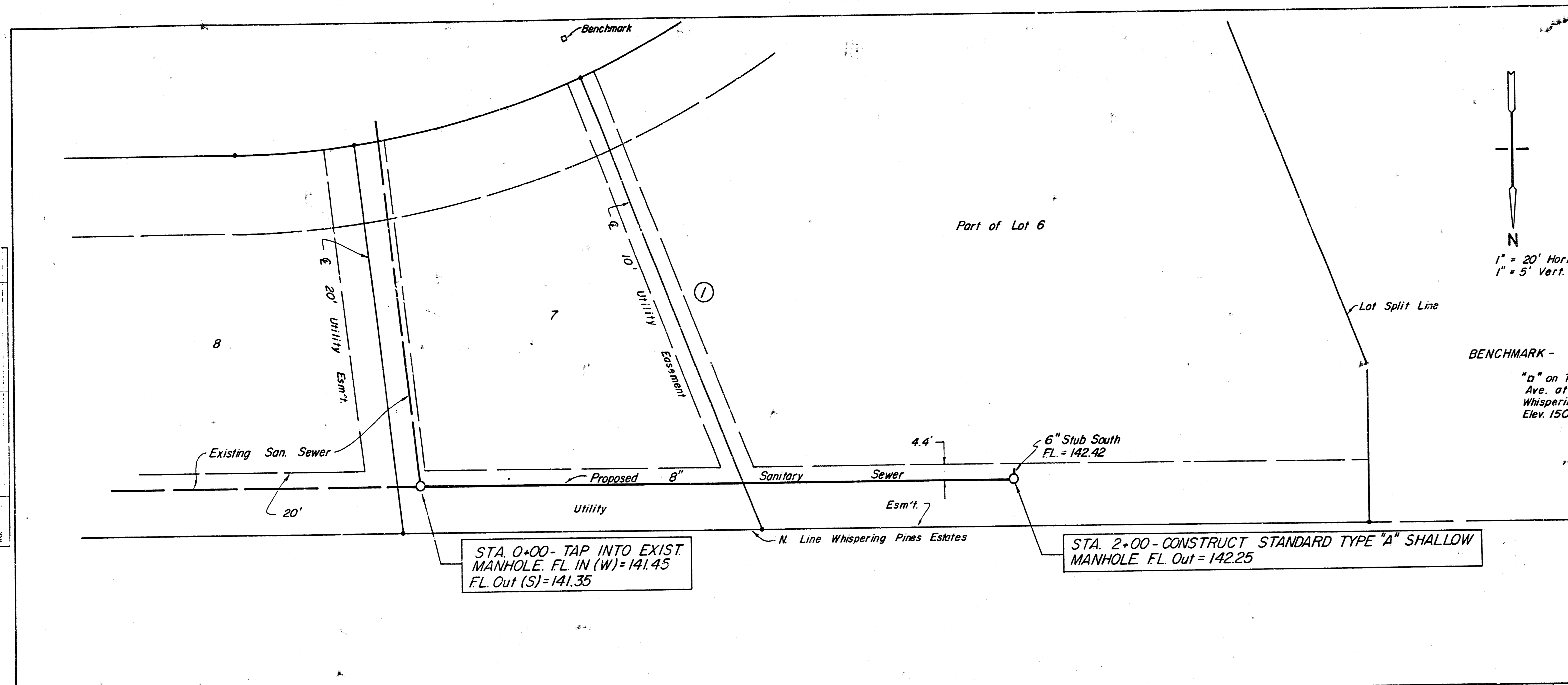
NOTE TO CONTRACTOR

This project will be constructed under the supervision of the CITY ENGINEER and conforming to the SPECIFICATIONS of the CITY OF WICHITA. The CONTRACTOR will pay the City of Wichita for all costs of plan review, inspection and booking per contract.

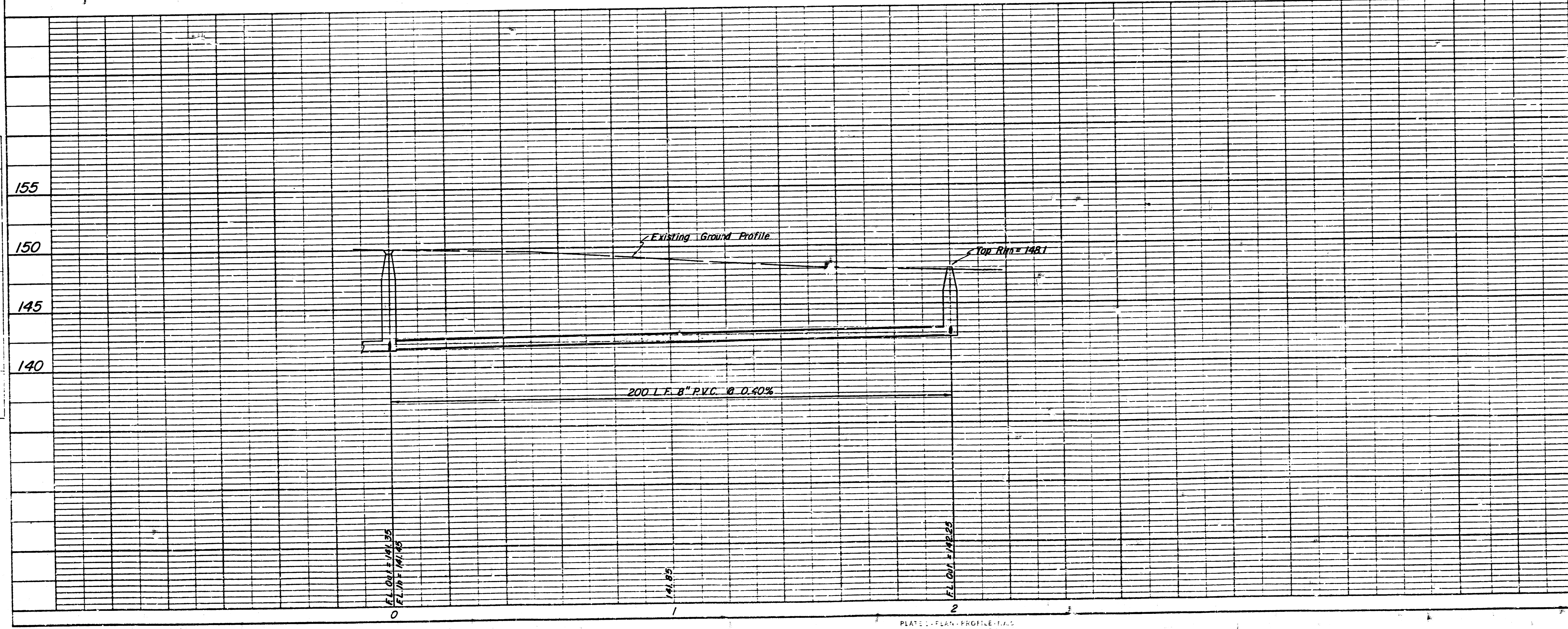
MOEHRING & ASSOCIATES
CONSULTING ENGINEERS
WICHITA



PLAN
 DRAWN BY: []
 CHECKED BY: []
 DATE: []



PROFILE
 DRAWN BY: []
 CHECKED BY: []
 DATE: []



PLAN AND PROFILE
 Sanitary Sewer Extension
 Part of Lot 6, Blk. 1 - Whispering Pines Estates, Wichita, KS
 Moehring & Associates
 Consulting Engineers
 Wichita
 85-087-P Oct. 1985
 Sheet 1/2